

Sestava Eminence Beta-8 + LeSon TLC-5

Osazení:

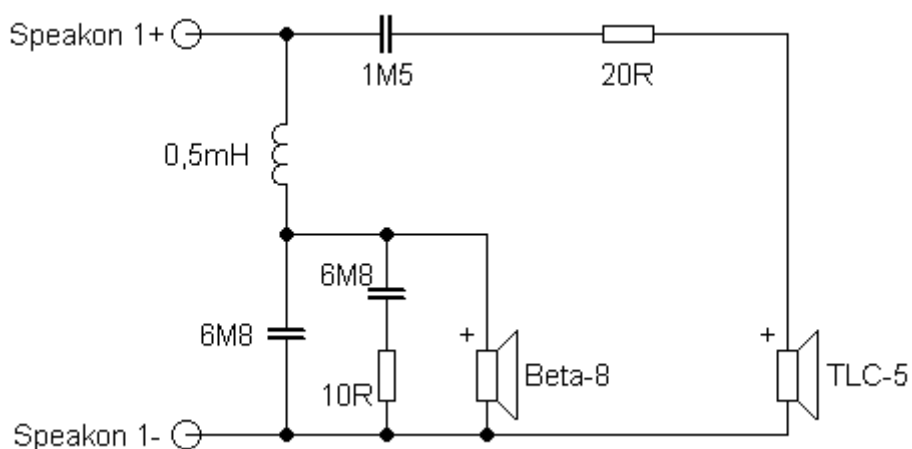
- Eminence Beta-8 8/Ohm

<http://eshop.prodance.cz/DetailPage.asp?DPG=84341>

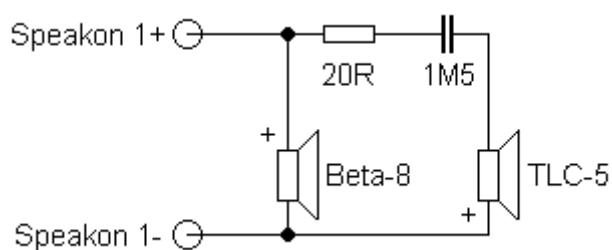
- LeSon TLC-5 8/Ohm

<http://eshop.prodance.cz/DetailPage.asp?DPG=77791>

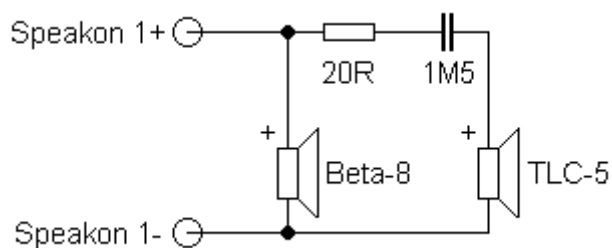
Schémata výhybek: (pozn.: Varianty II. a III. se liší pouze opačnou polaritou pieza.)



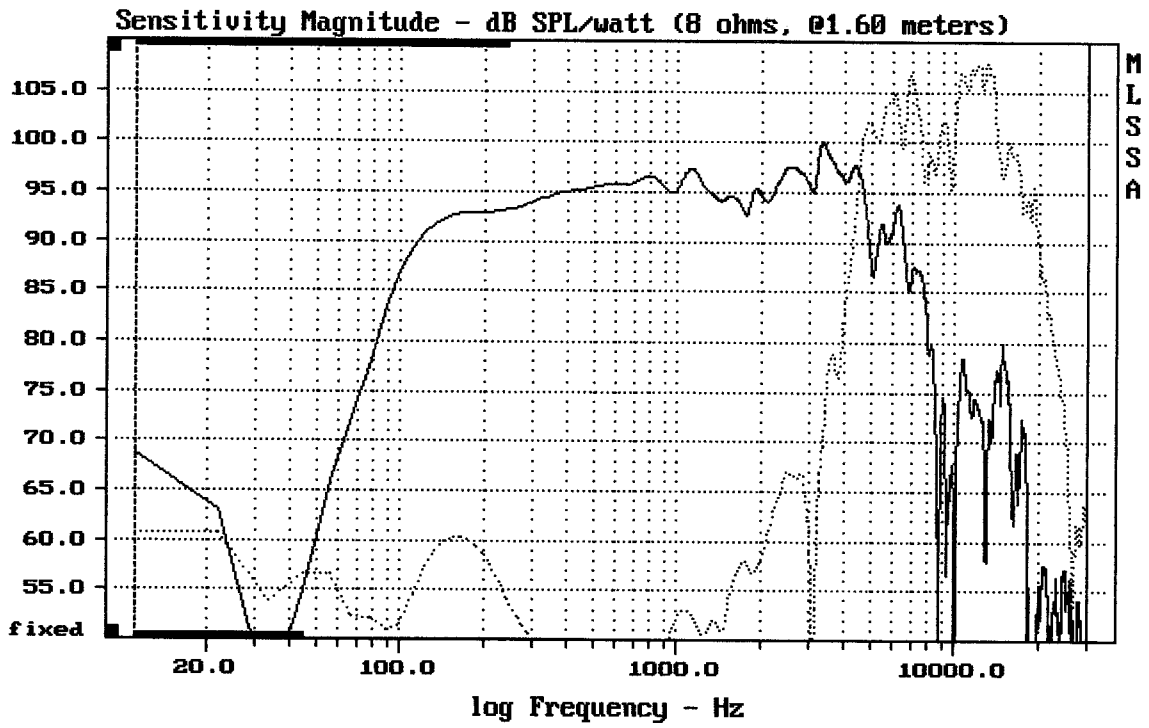
varianta I.



varianta II.



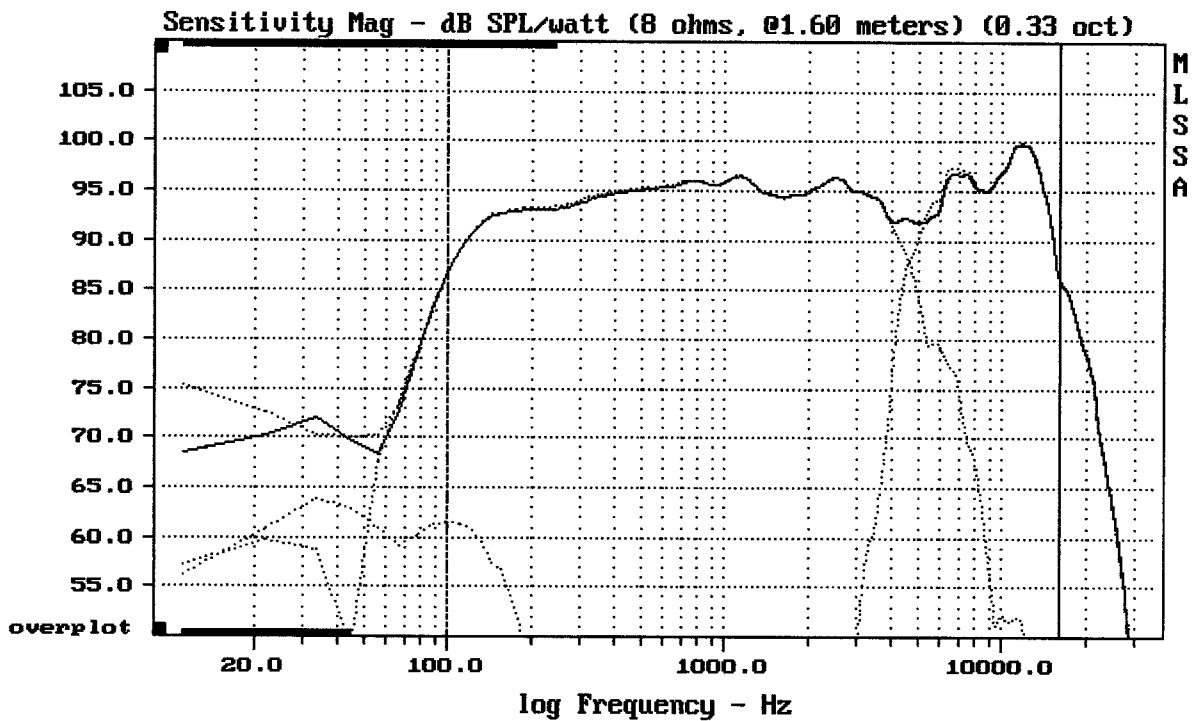
varianta III.



CURSOR: dy = 13.7613 x = 30007.1014 (2704)

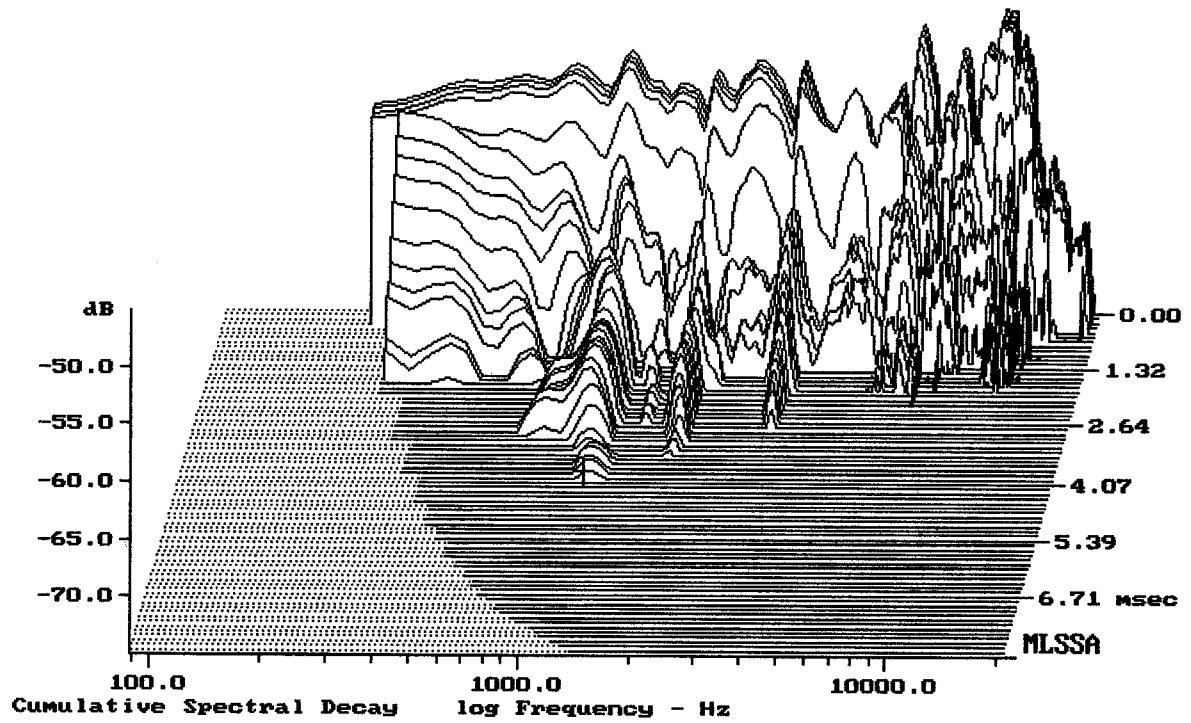
BETA 8 + TLC-5

MLSSA: Frequency Domain



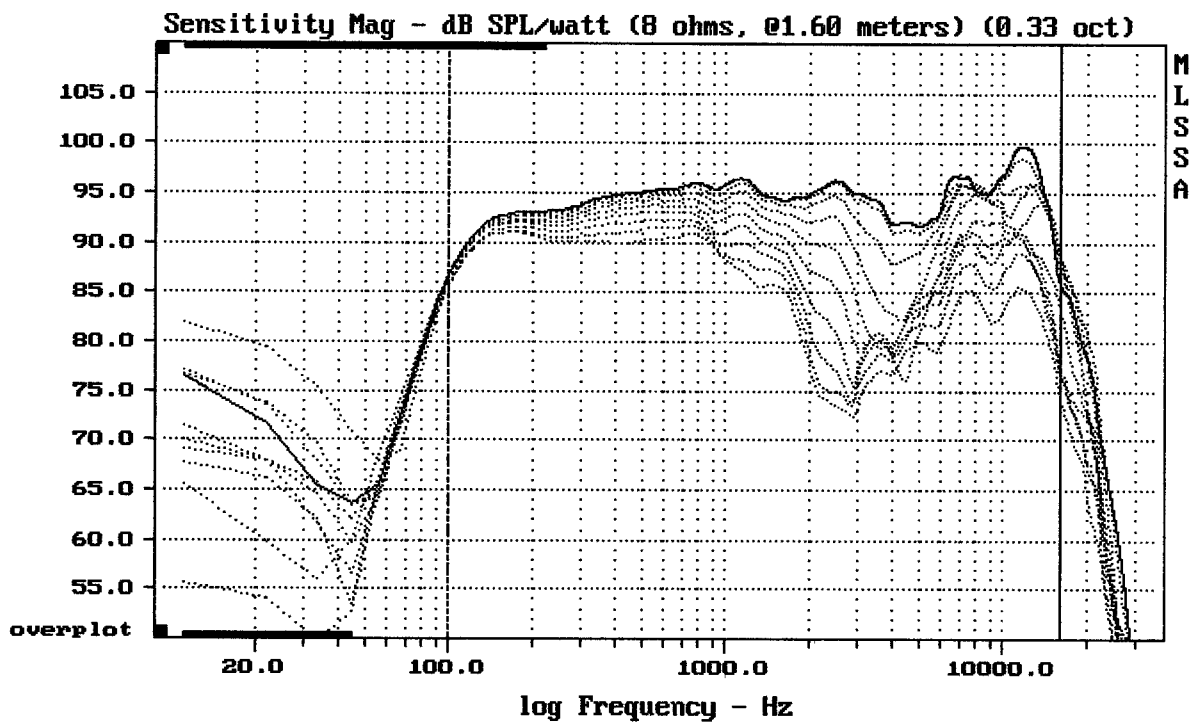
Level (100:16002 Hz) = 94.95 dB SPL/watt (8 ohms, @1.60 meters) (0.33 oct)

BETA 8 + TLC-5



-74.42 dB, 1110 Hz (25), 3.960 msec (37)

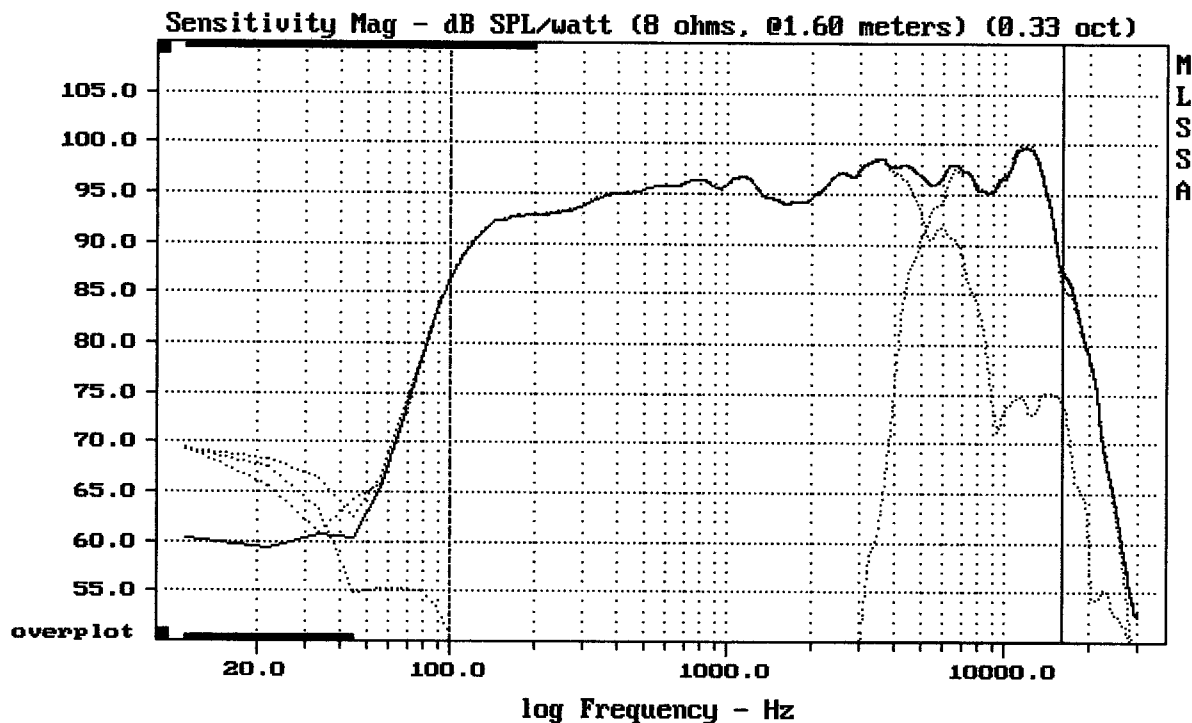
DTTO



Overlay Compare: dev= +13/-9.6, std= 3.5, avg= -13

BETA 8 + TLC-5

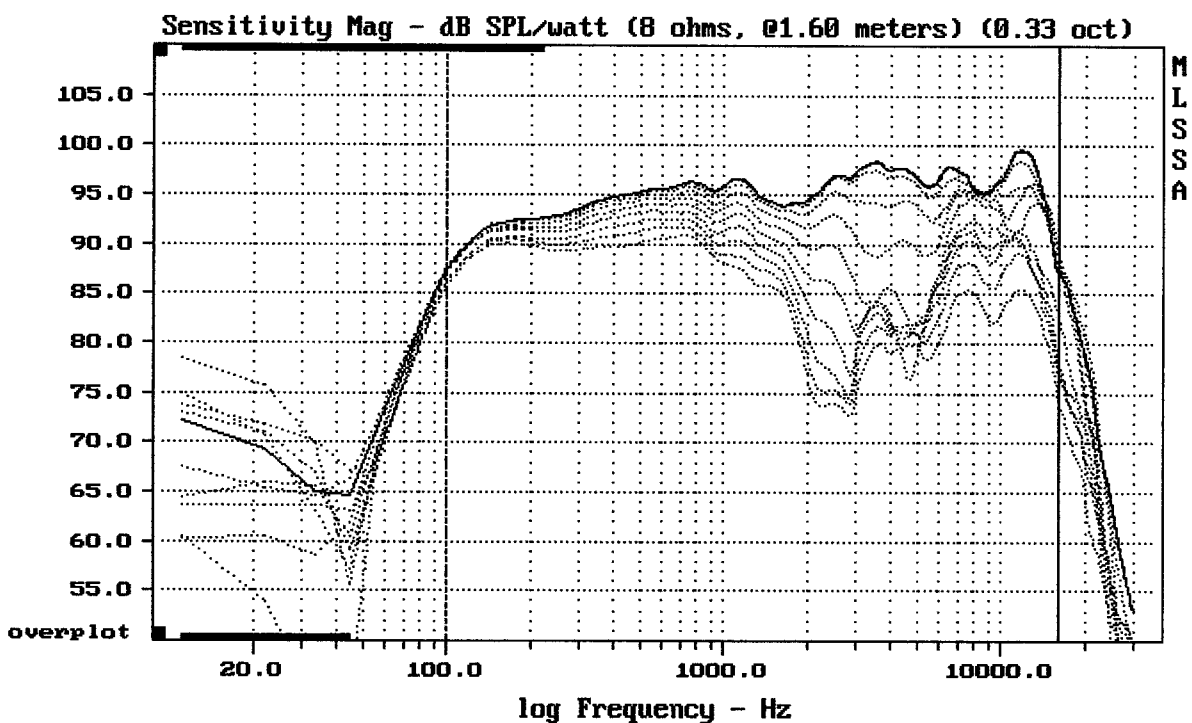
Varianta I.



Level (100:16002 Hz) = 95.72 dB SPL/watt (8 ohms, @1.60 meters) (0.33 oct)

BETA 8 + TLC-5

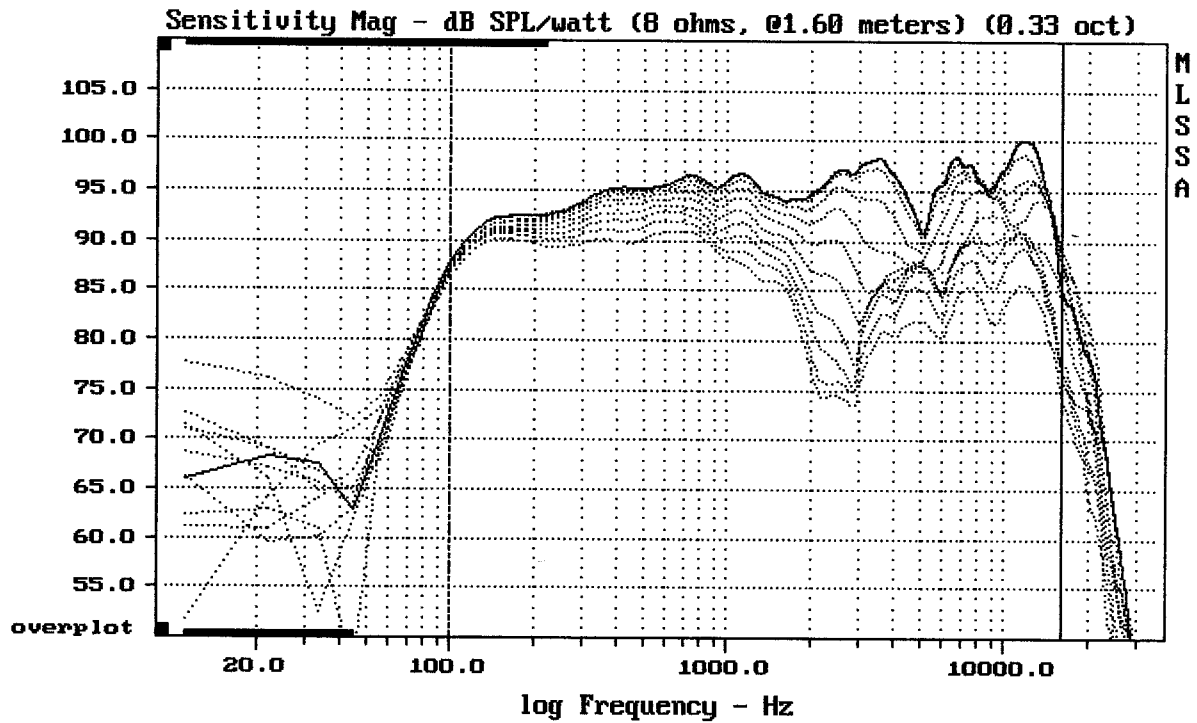
MLSSA: Frequency Domain



Overlay Compare: dev= +12/-9.8, std= 3.9, avg= -14

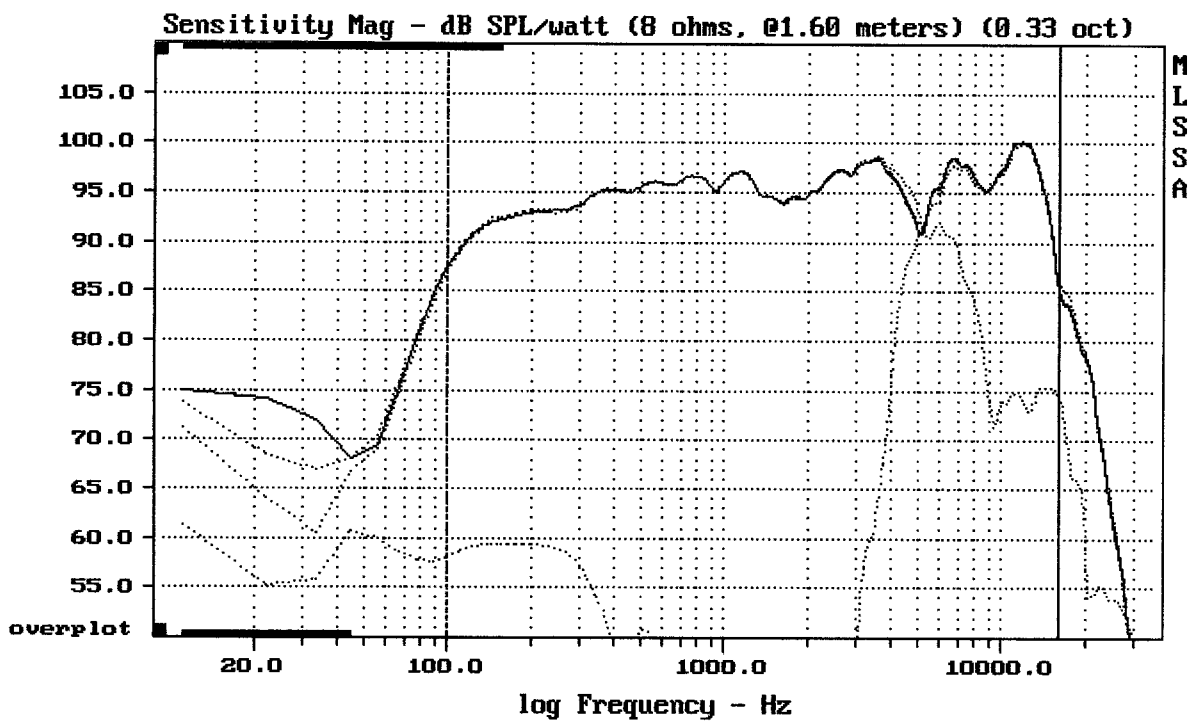
BETA 8 + TLC-5

Varianta II.



Overlay Compare: dev= +12/-9.7, std= 3.6, avg= -14

MLSSA: Frequency Domain



Level (100:16002 Hz) = 95.69 dB SPL/watt (8 ohms, @1.60 meters) (0.33 oct)

Varianta III.