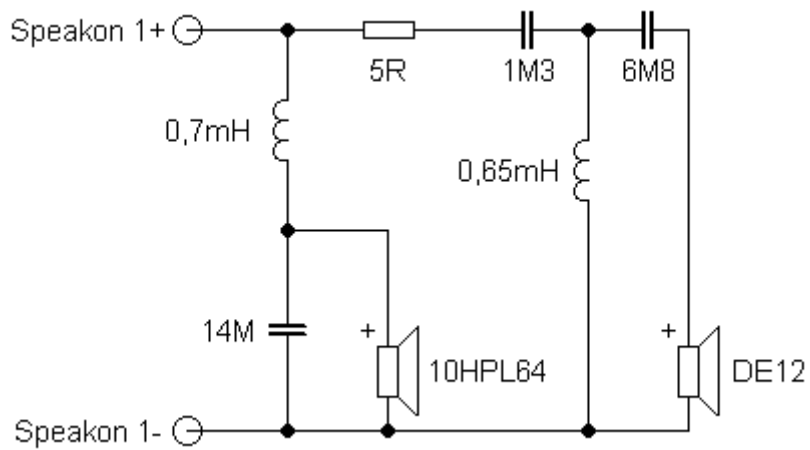


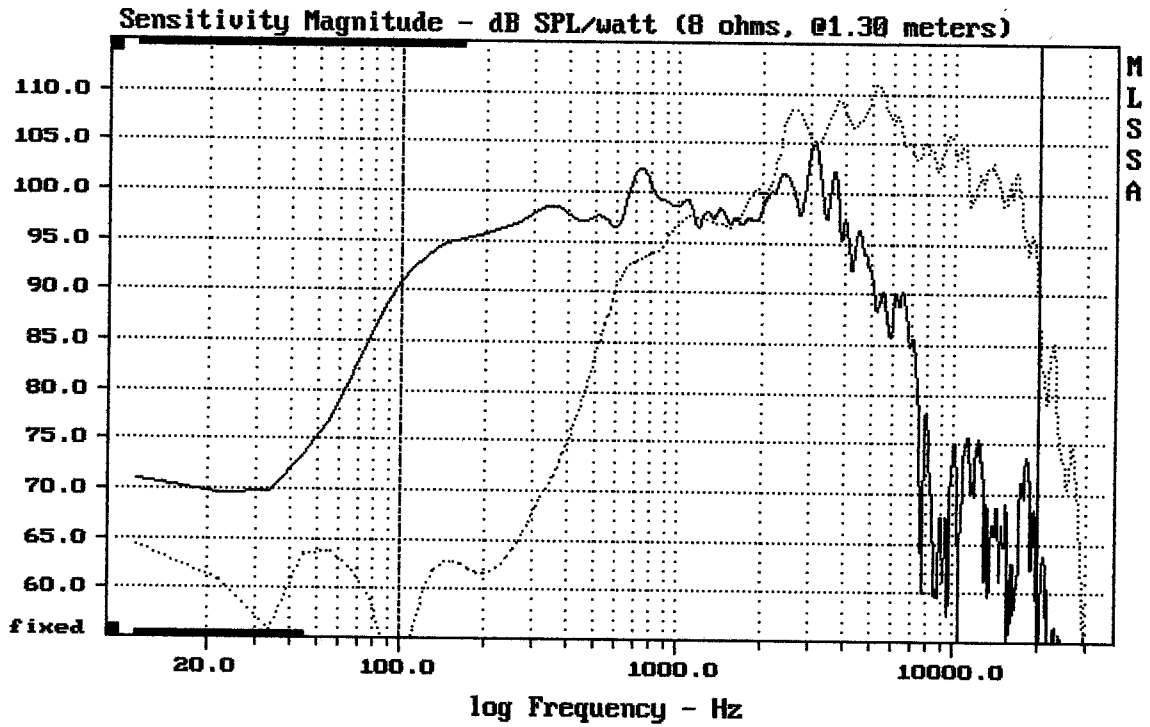
Sestava B&C Speakers 10HPL64 + DE12 + Megaton A1040

Osazení:

- B&C Speakers 10HPL64 8/Ohm
<http://eshop.prodance.cz/DetailPage.asp?DPG=82621>
- B&C Speakers DE12 8/Ohm
<http://eshop.prodance.cz/DetailPage.asp?DPG=82296>
- Megaton A1040
<http://eshop.prodance.cz/DetailPage.asp?DPG=83831>

Schéma výhybky:

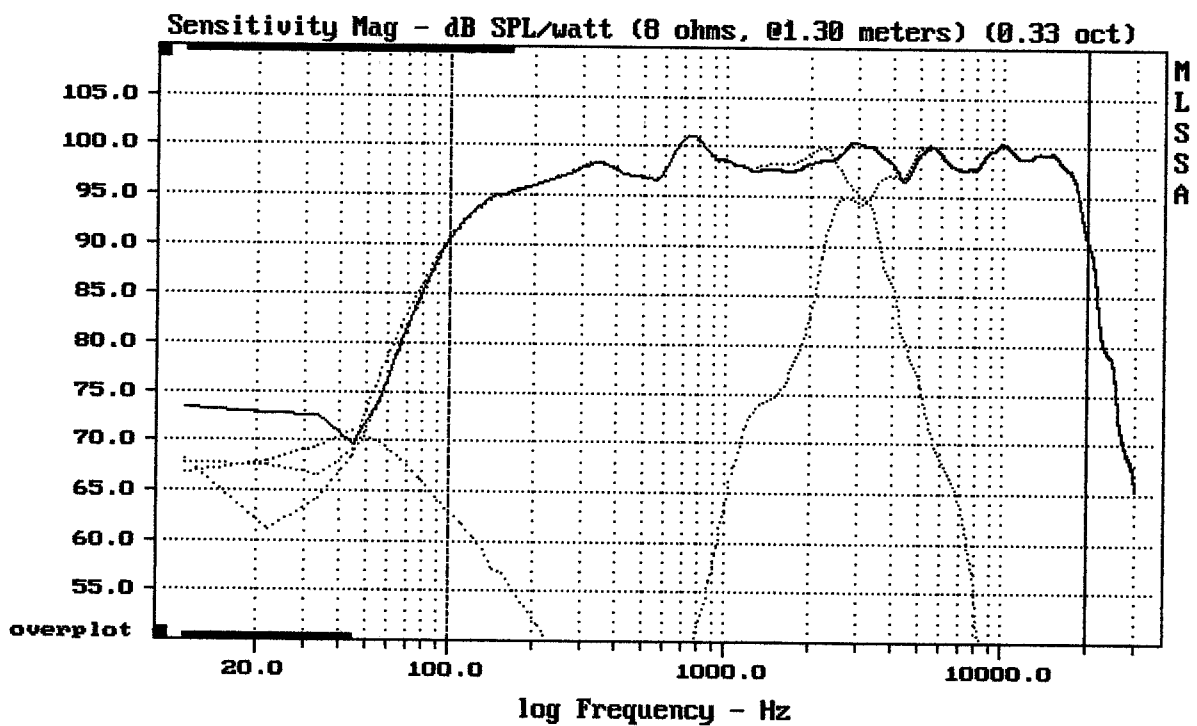




CURSOR: dy = 32.0225 x = 19997.3360 (1802)

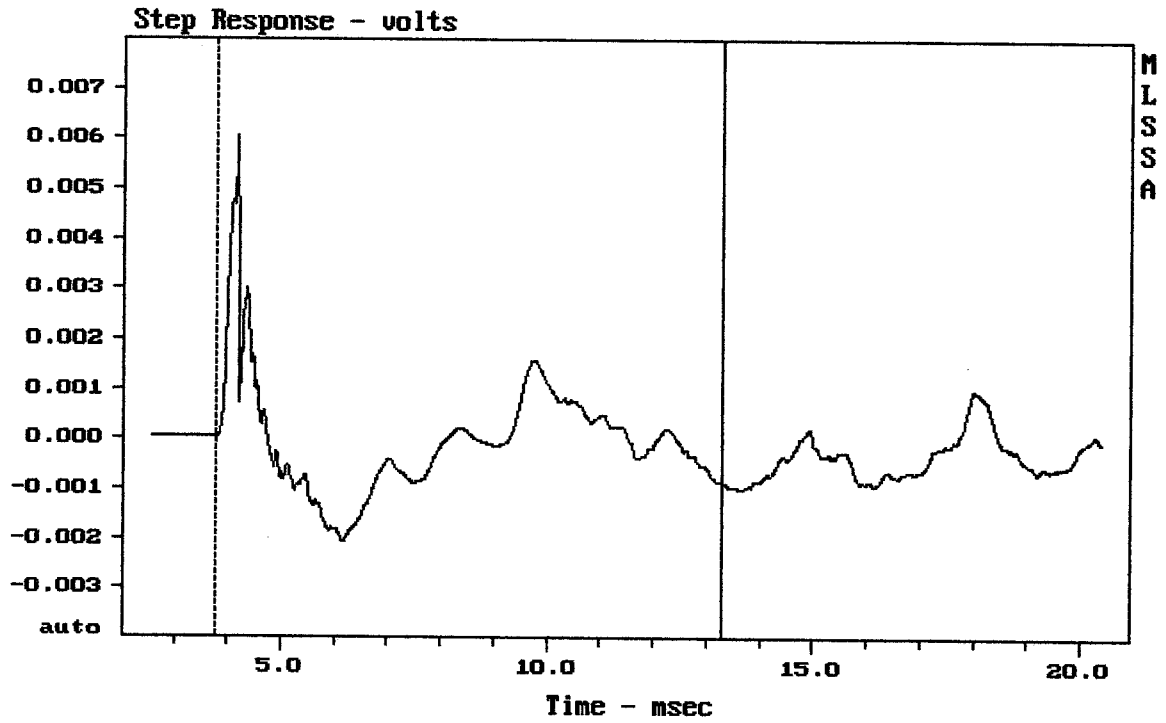
10HPL64 + DE12 + A1040

MLSSA: Frequency Domain



Level (100:19997 Hz) = 98.13 dB SPL/watt (8 ohms, @1.30 meters) (0.33 oct)

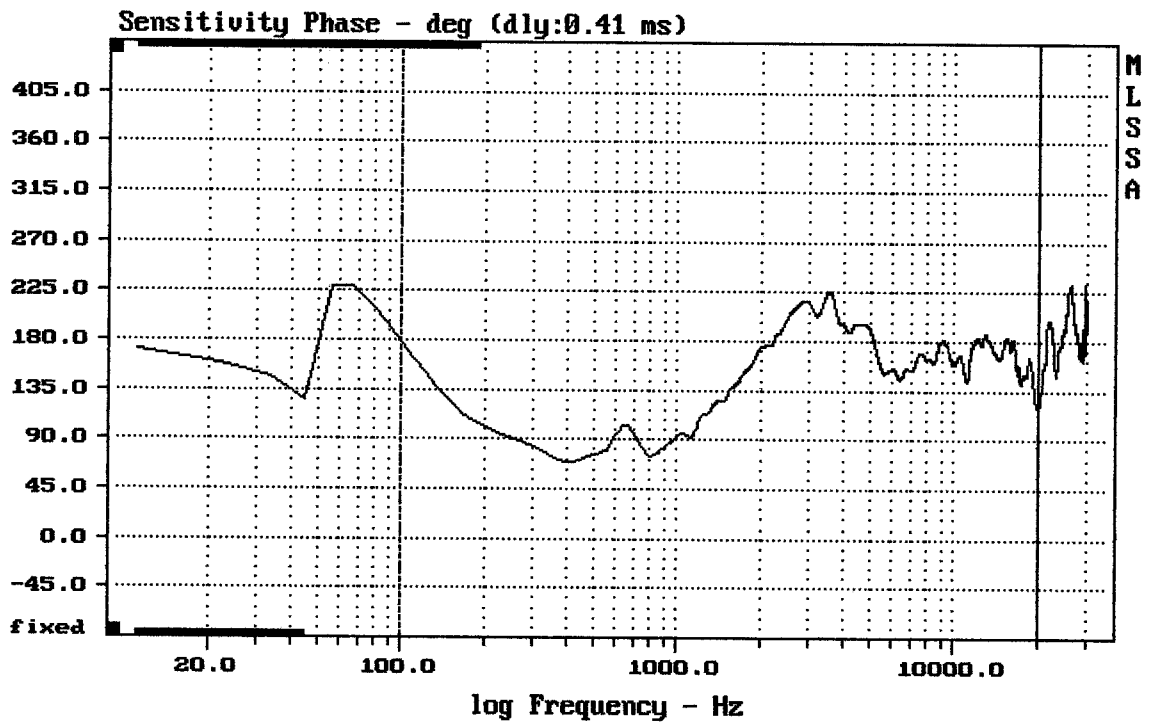
10HPL64 + DE12 + A1040



mean: $-4.032e-005$, rms: 0.001122, std: 0.001121, max: 0.006035, min: -0.002061

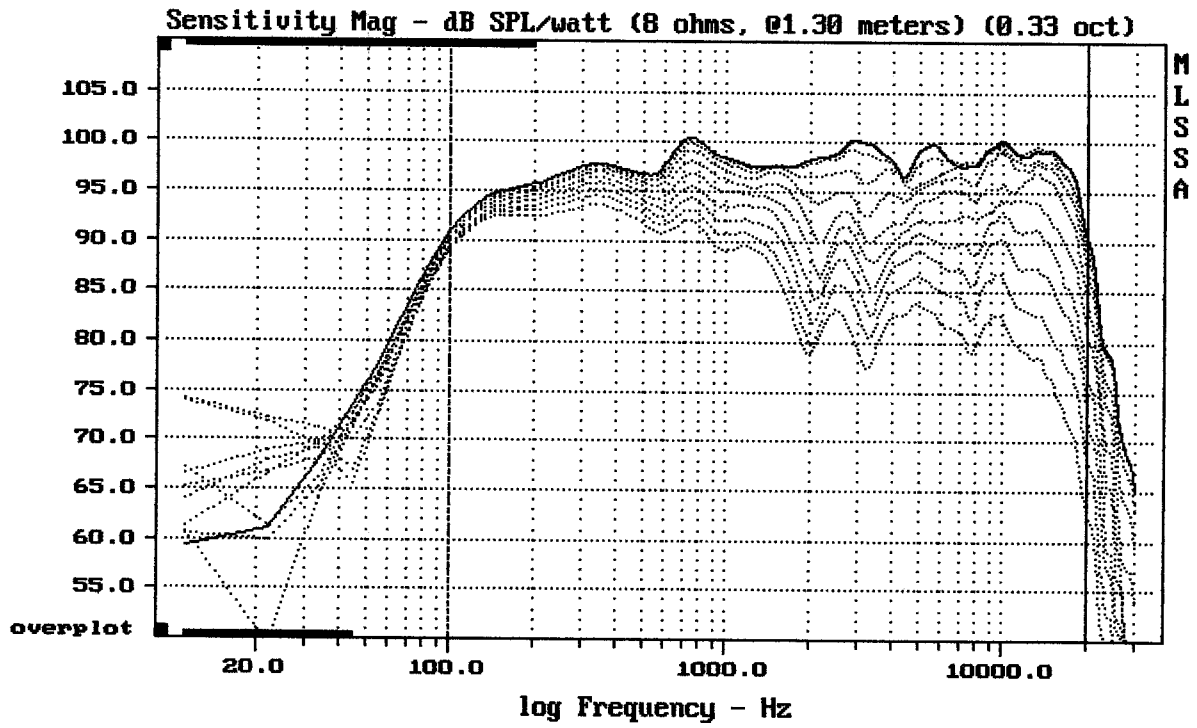
10HPL64 + DE12 + A1040

MLSSA: Time Domain



mean: 164.3, rms: 166.5, std: 27.19, max: 224.8, min: 69.09

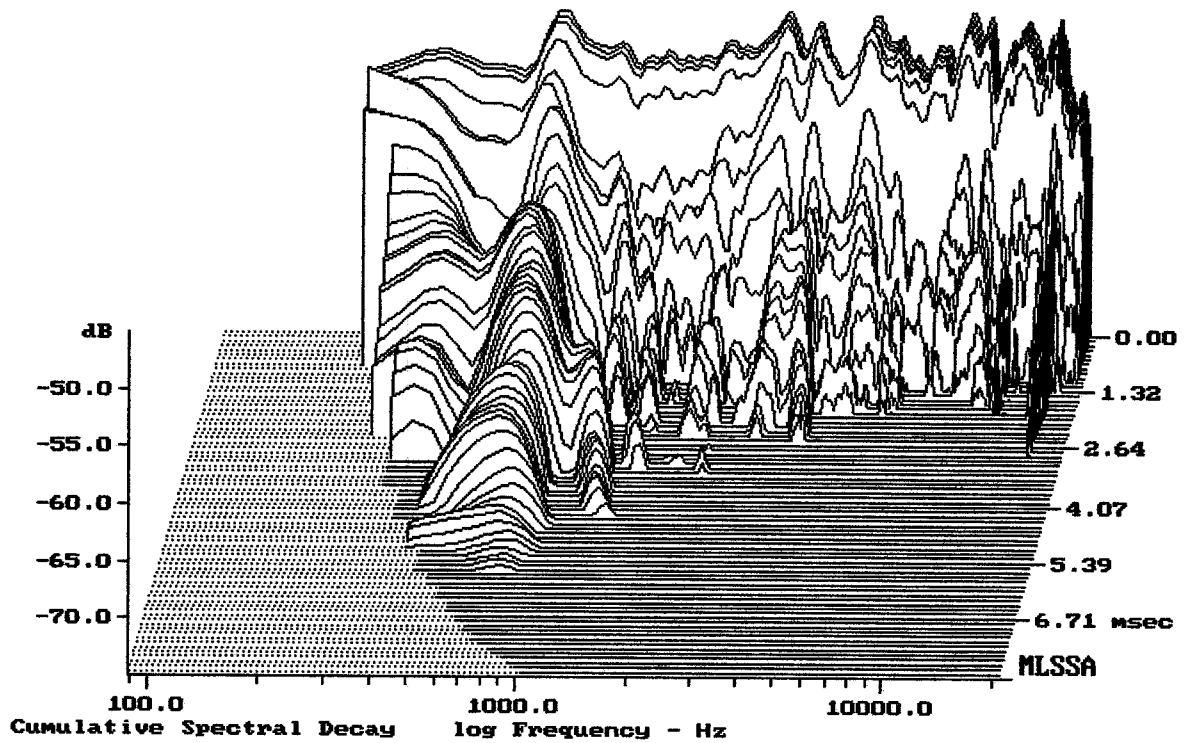
10HPL64 + DE12 + A1040



Overlay Compare: dev= +18/-8.2, std= 5.1, avg= -19

10HPL64 + DE12 + A1040

MLSSA: Frequency Domain



-72.70 dB, 3951 Hz (89), 2.530 msec (24)