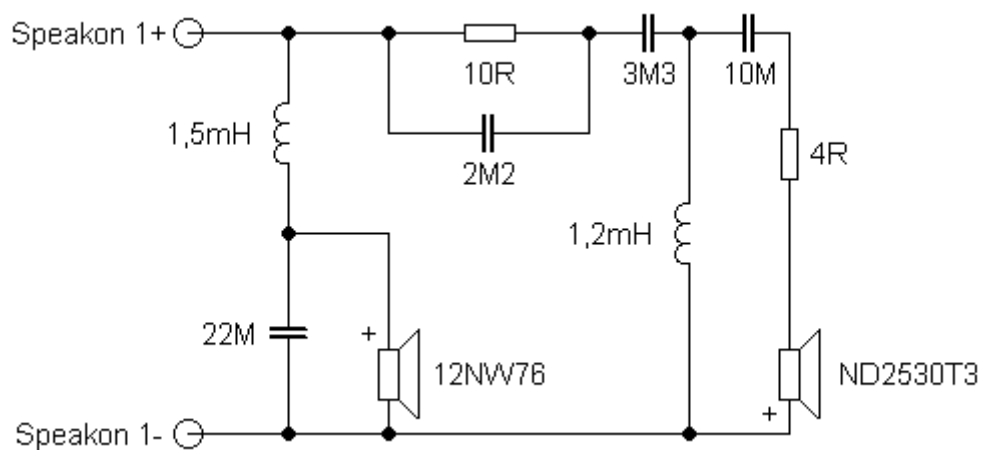


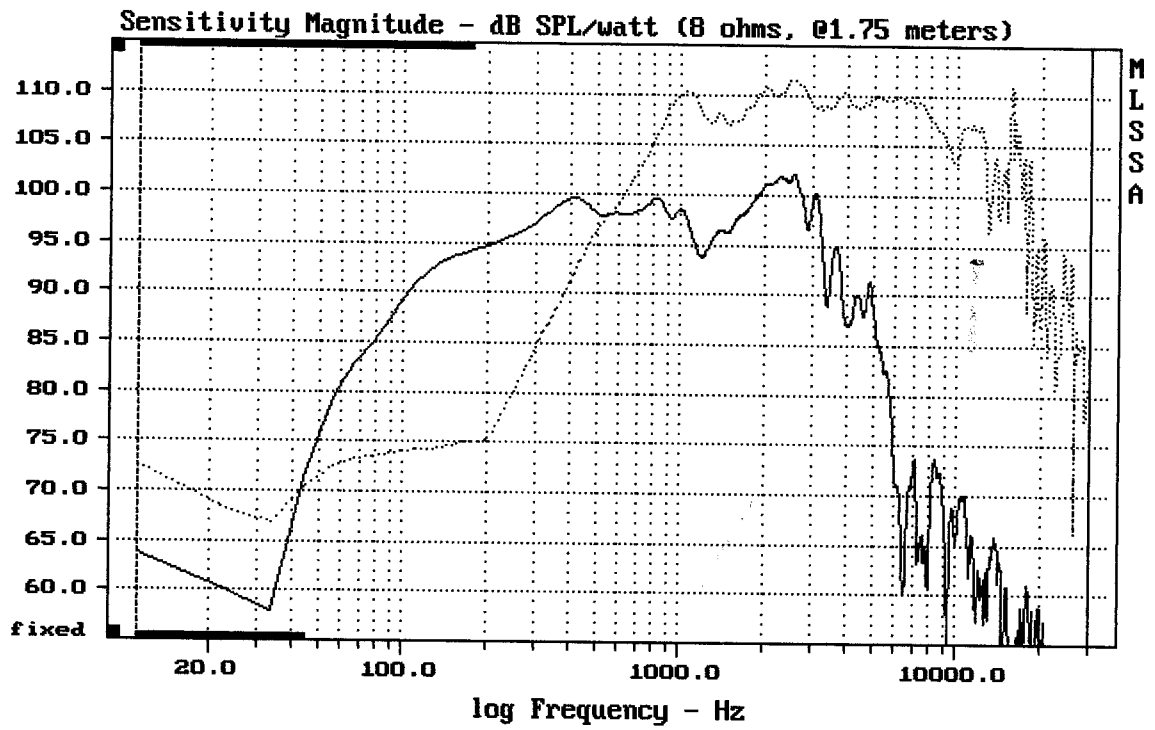
Sestava B&C Speakers 12NW76 + RCF ND2530T3 + HF94

Osazení:

- B&C Speakers 12NW76 8/Ohm
<http://eshop.prodance.cz/DetailPage.asp?DPG=82730>
- RCF ND2530T3 8/Ohm
<http://eshop.prodance.cz/DetailPage.asp?DPG=79636>
- RCF HF94
<http://eshop.prodance.cz/DetailPage.asp?DPG=81664>

Schéma výhybky:

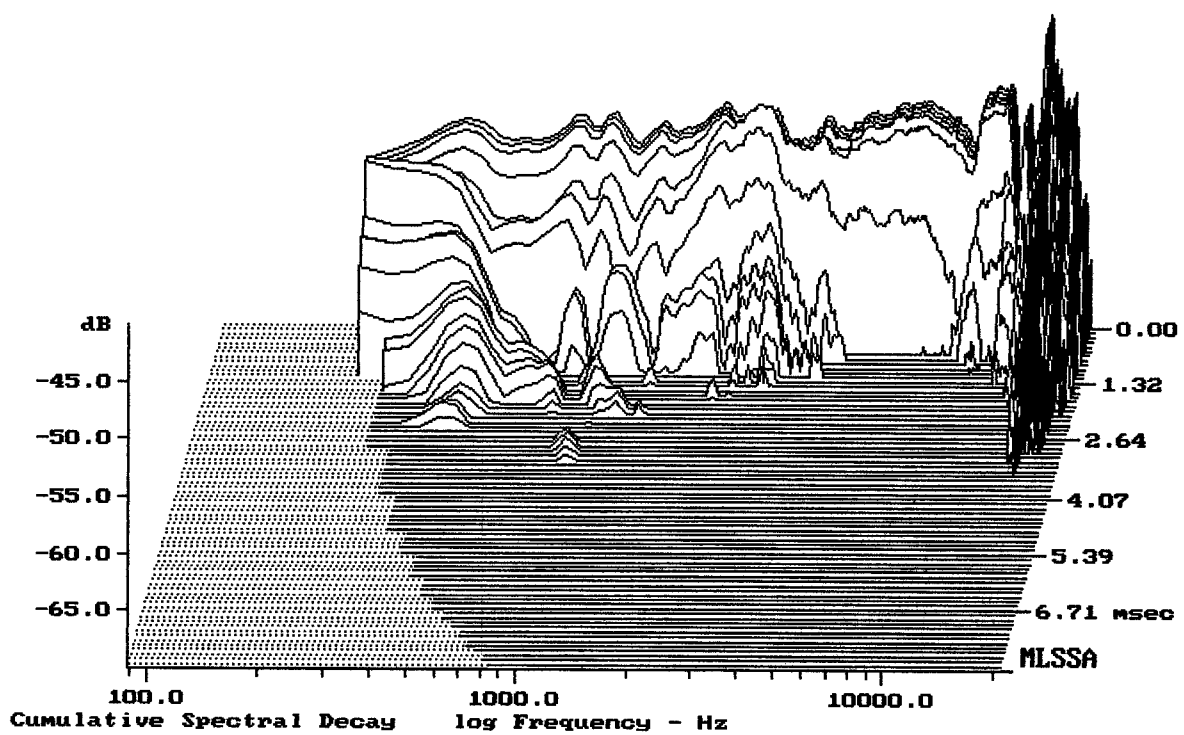




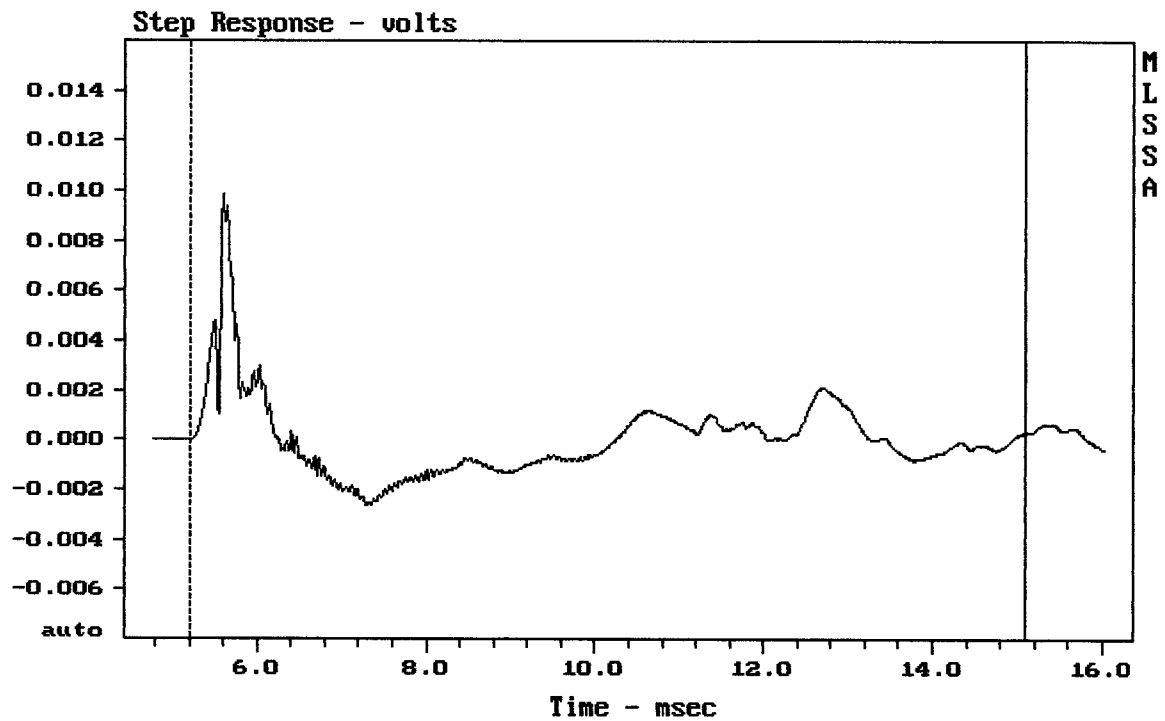
CURSOR: dy = 47.7986 x = 30007.1014 (2704)

12NW76 + ND2530s + HF94

MLSSA: Frequency Domain



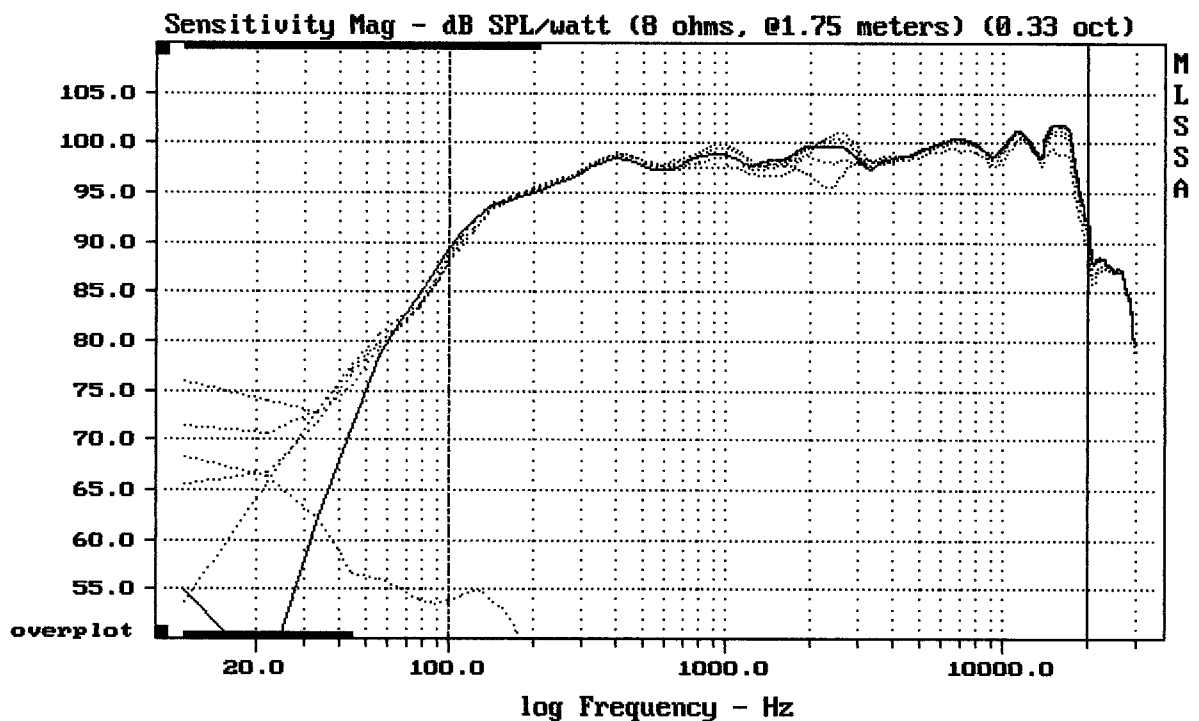
-68.48 dB, 2885 Hz (65), 1.430 msec (14)



mean: 5.833e-006, rms: 0.001595, std: 0.001595, max: 0.009812, min: -0.002645

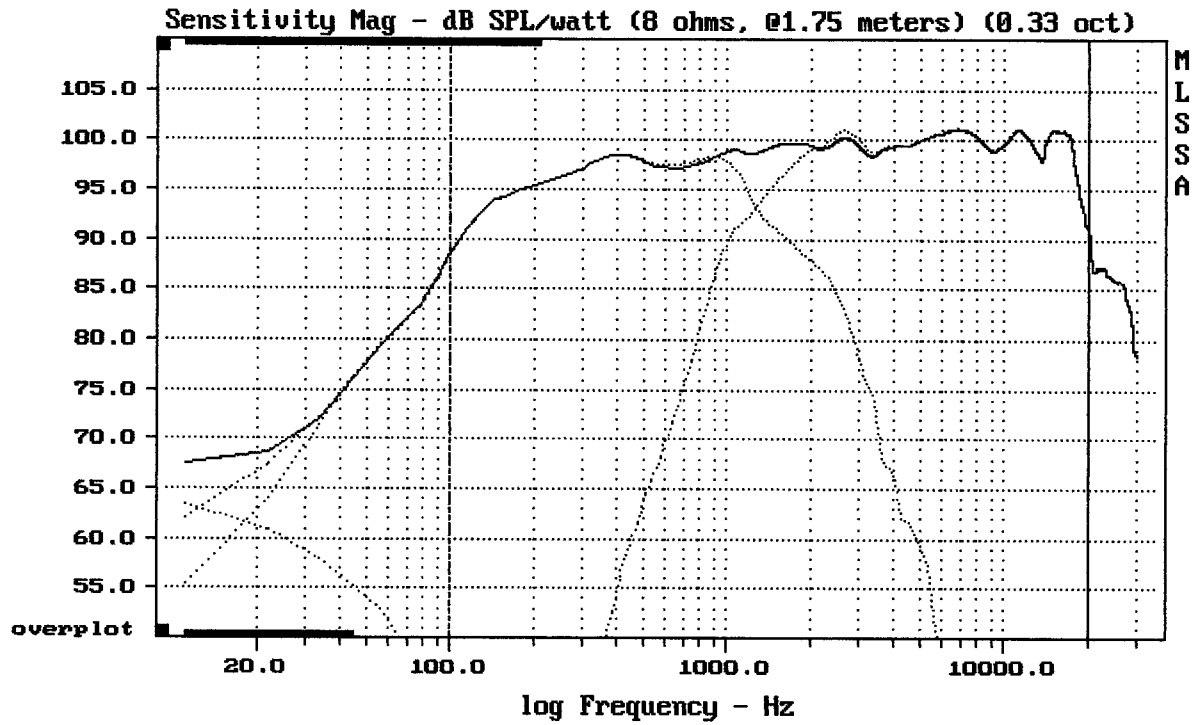
12NW76 + ND2530s + HF94

MLSSA: Time Domain



mean: 99.27, rms: 99.44, std: 1.60, max: 101.38, min: 88.72

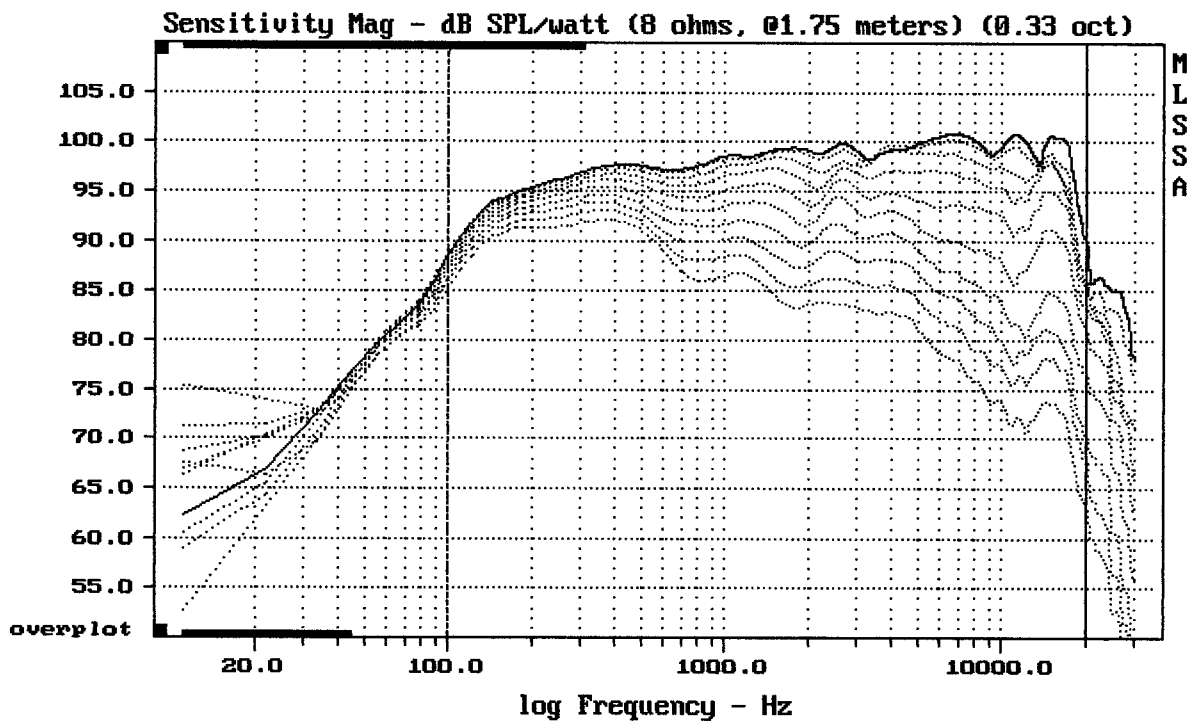
12NW76 + ND2530s + HF94



Level (100:20000 Hz) = 98.57 dB SPL/watt (8 ohms, @1.75 meters) (0.33 oct)

12NW76 + ND2530s + HF94

MLSSA: Frequency Domain



Overlay Compare: dev= +20/-6.1, std= 5.8, avg= -23

12NW76 + ND2530s + HF94