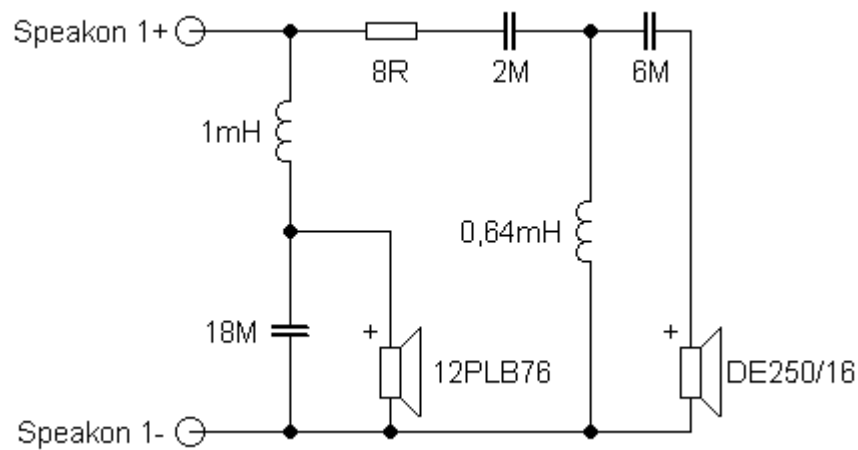


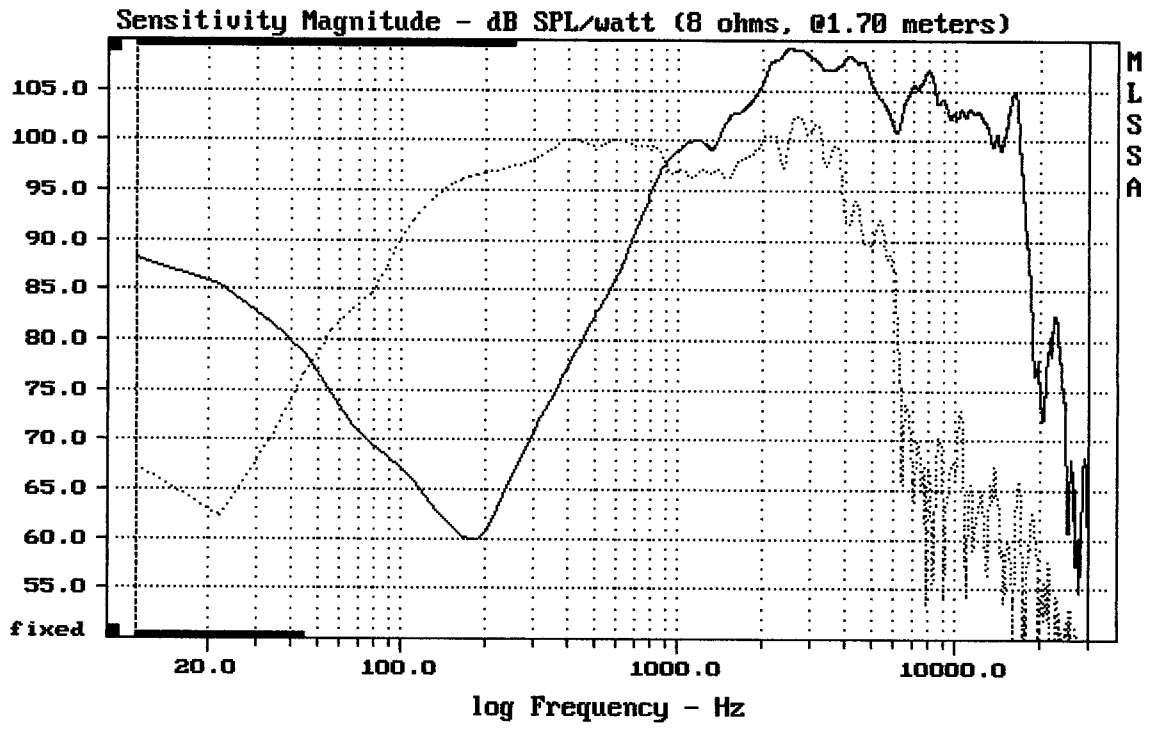
## Sestava B&C Speakers 12PLB76 + DE250/16 + Megaton A9090

### Osazení:

- B&C Speakers 12PLB76 8/Ohm  
<http://eshop.prodance.cz/DetailPage.asp?DPG=82746>
- B&C Speakers DE250/16 16/Ohm  
<http://eshop.prodance.cz/DetailPage.asp?DPG=82305>
- Megaton A9090  
<http://eshop.prodance.cz/DetailPage.asp?DPG=83920>

### Schéma výhybky:

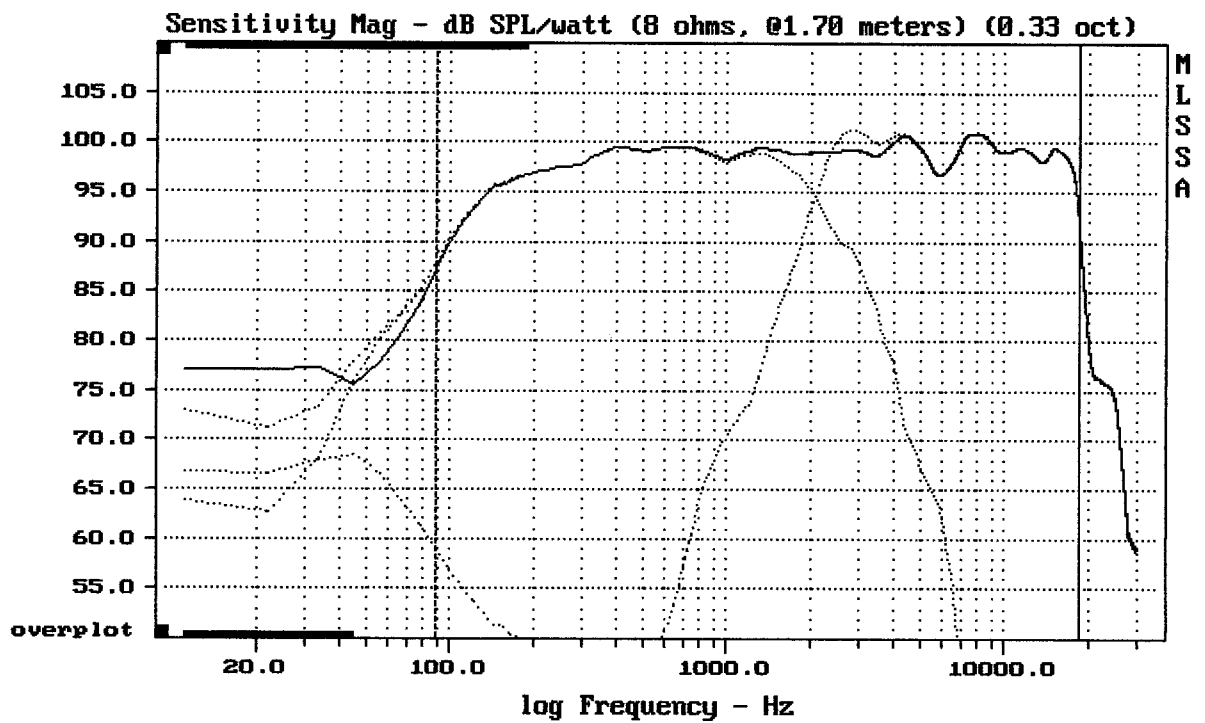




CURSOR: dy = -23.0621 x = 30007.1014 (2704)

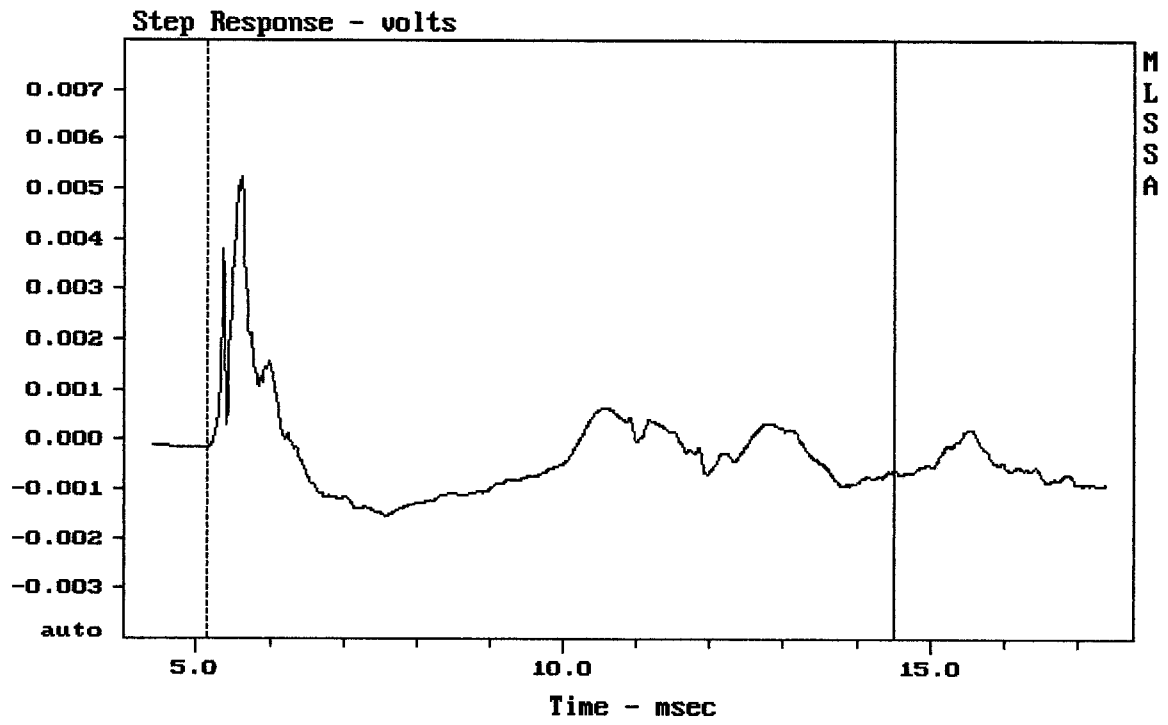
12PLB76 + DE250/16 + A9090

MLSSA: Frequency Domain



Level (89:18499 Hz) = 98.55 dB SPL/watt (8 ohms, @1.70 meters) (0.33 oct)

12PLB76 + DE250/16 + A9090



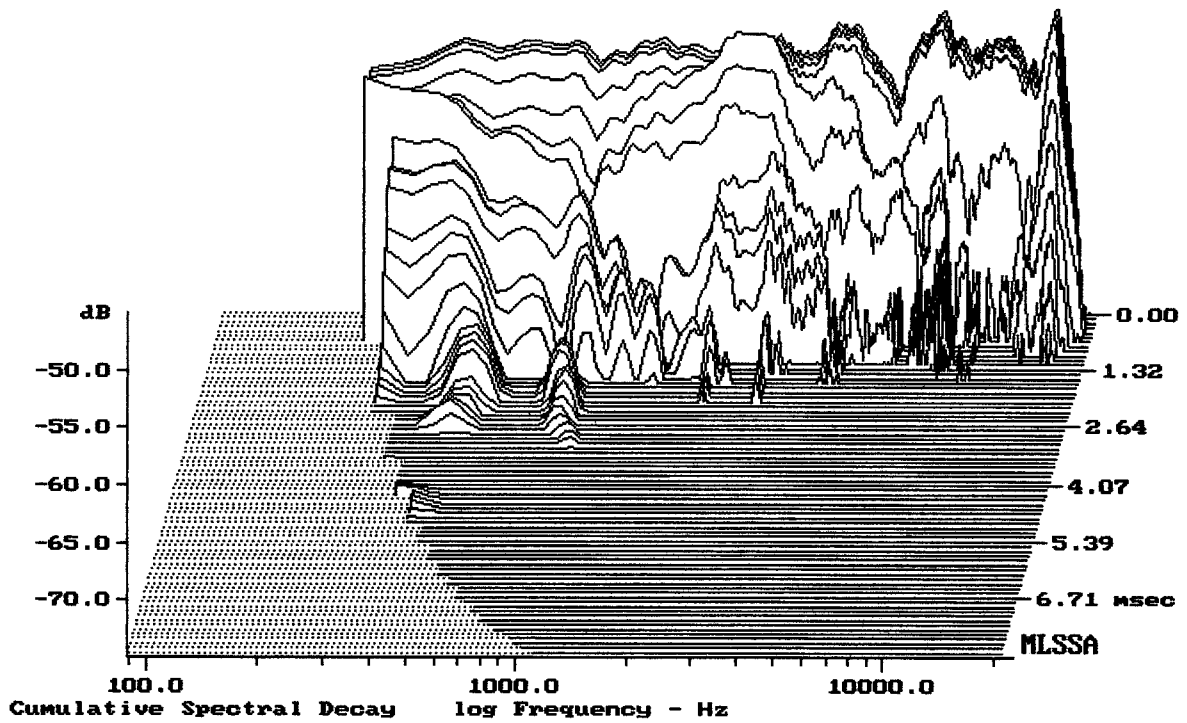

---

mean: -0.0002761, rms: 0.001081, std: 0.001046, max: 0.00523, min: -0.00155

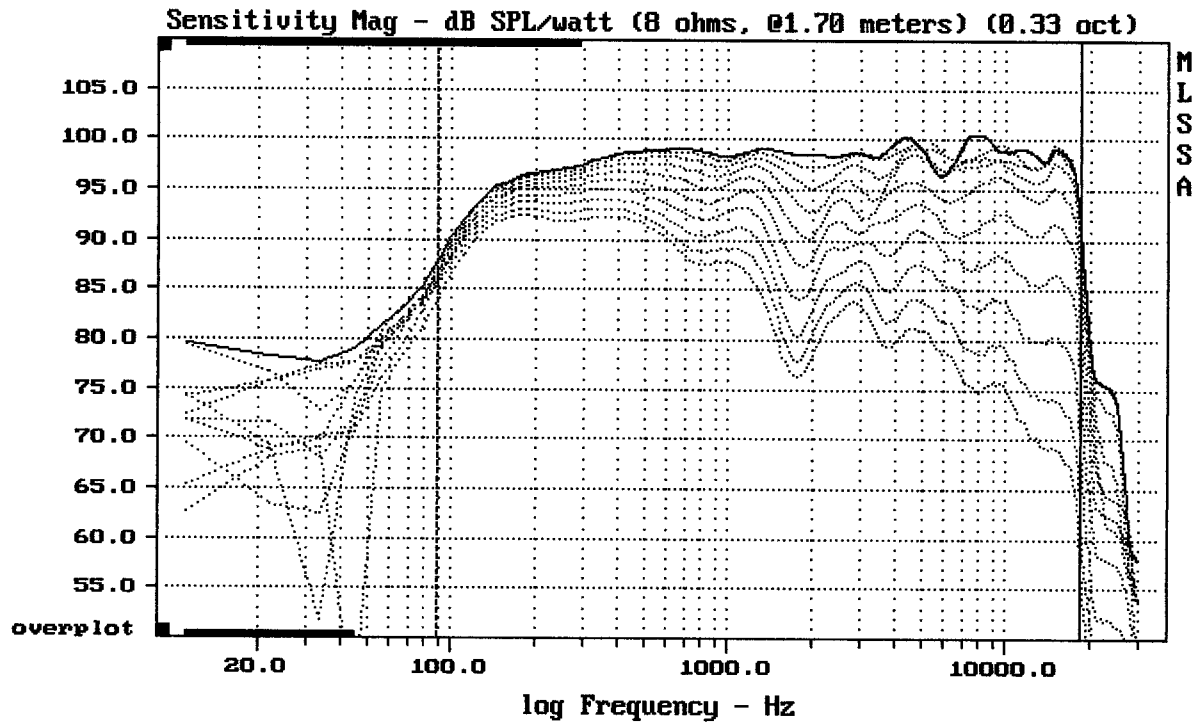
---

12PLB76 + DE250/16 + A9090

MLSSA: Time Domain



-73.76 dB, 2086 Hz (47), 2.090 msec (20)



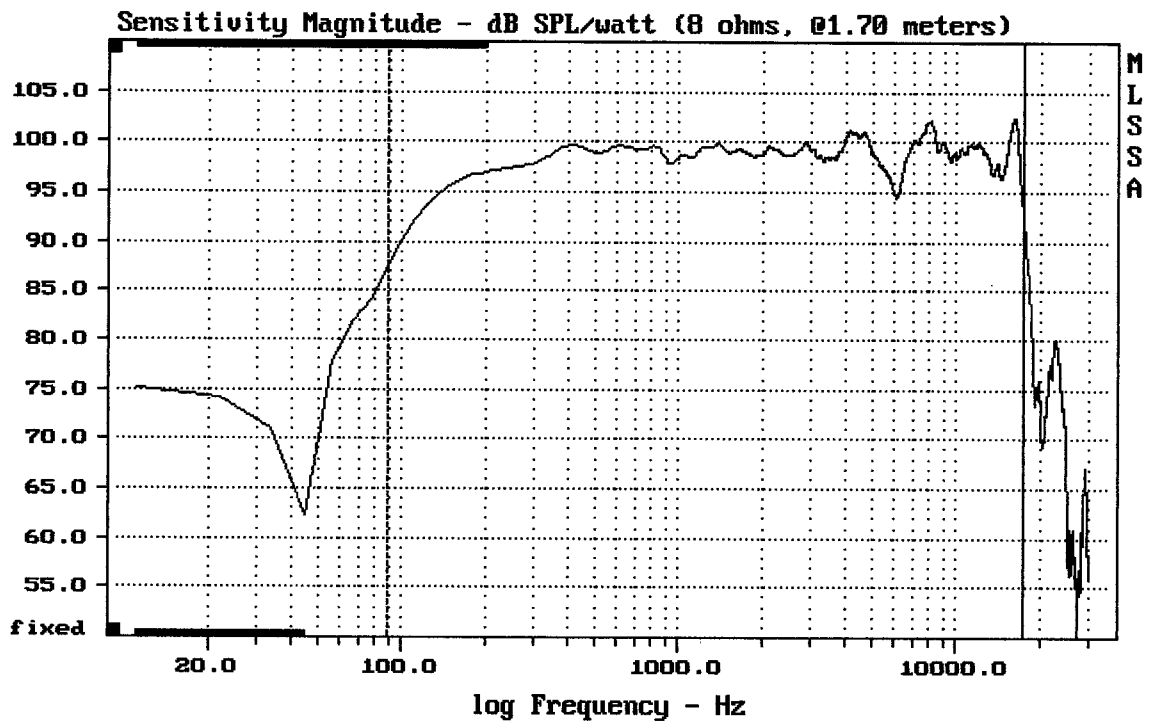

---

Overlay Compare: dev= +20/-9.7, std= 6.3, avg= -24

---

12PLB76 + DE250/16 + A9090

MLSSA: Frequency Domain

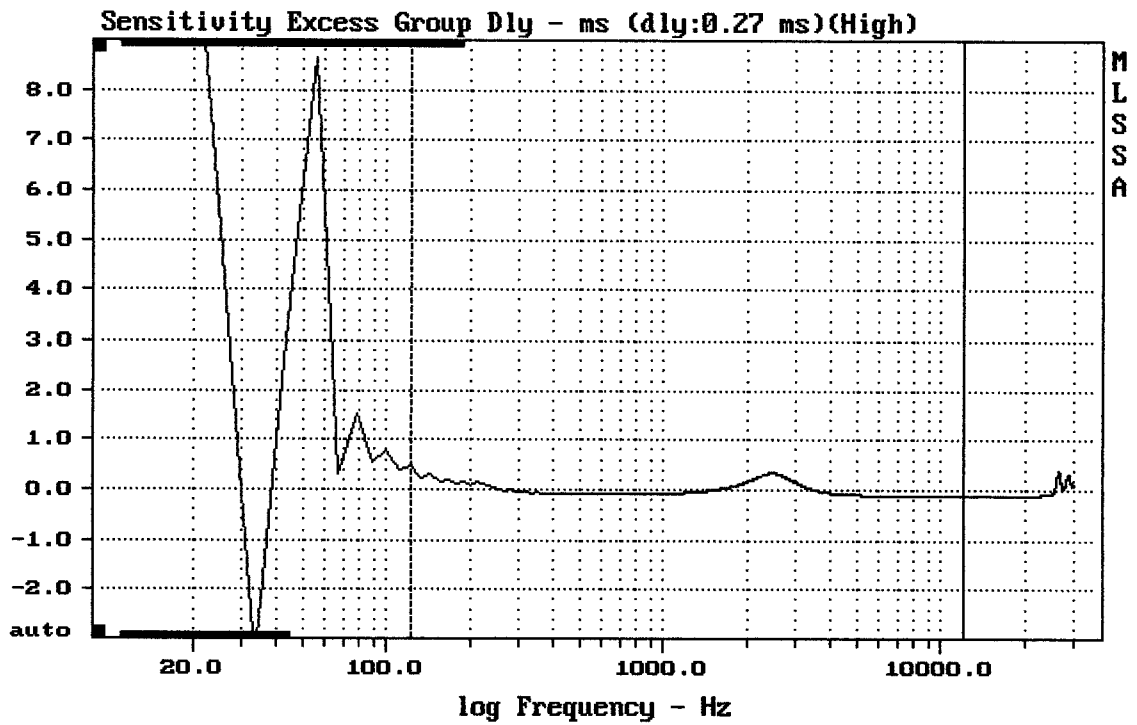



---

mean: 99.05, rms: 99.21, std: 1.54, max: 102.32, min: 87.34

---

12PLB76 + DE250/16 + A9090



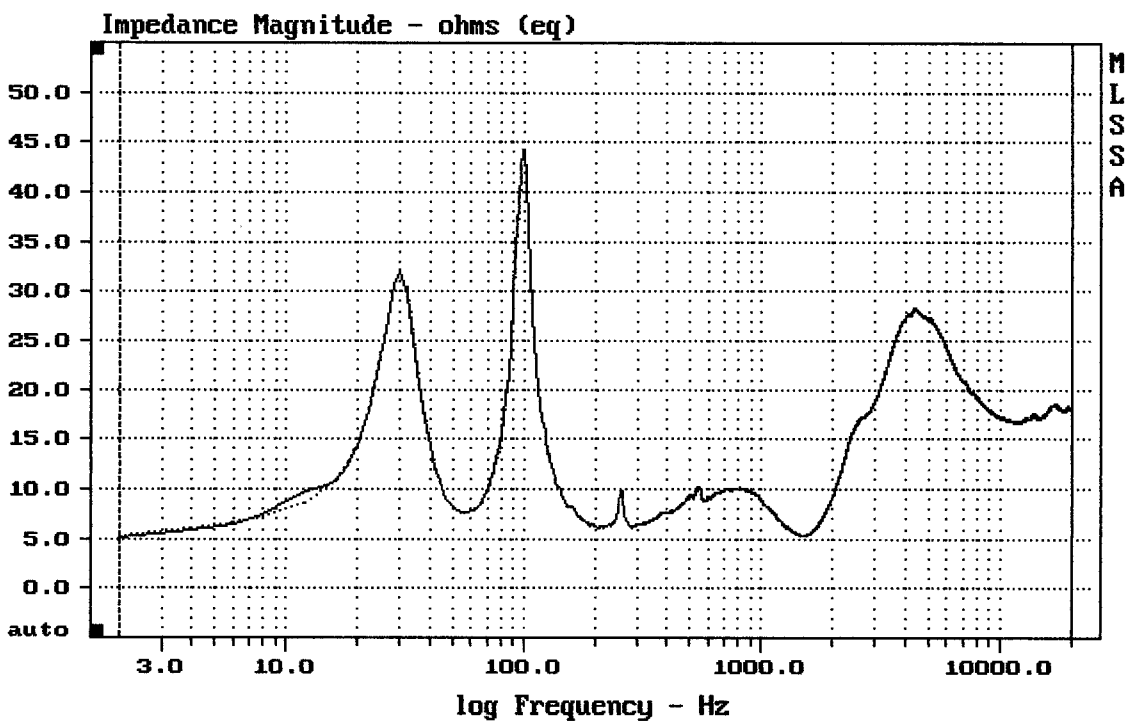

---

mean: -0.05415, rms: 0.1286, std: 0.1167, max: 0.4615, min: -0.1266

---

12PLB76 + DE250/16 + A9090

MLSSA: Frequency Domain




---

mean: 18.12, rms: 18.74, std: 4.772, max: 43.83, min: 5.302

---

12PLB76 + DE250/16 + A9090