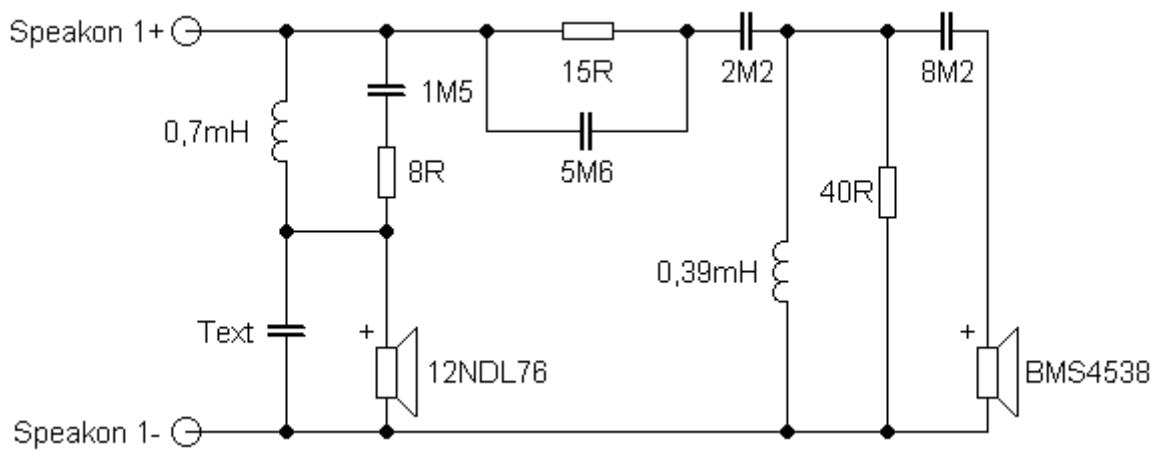


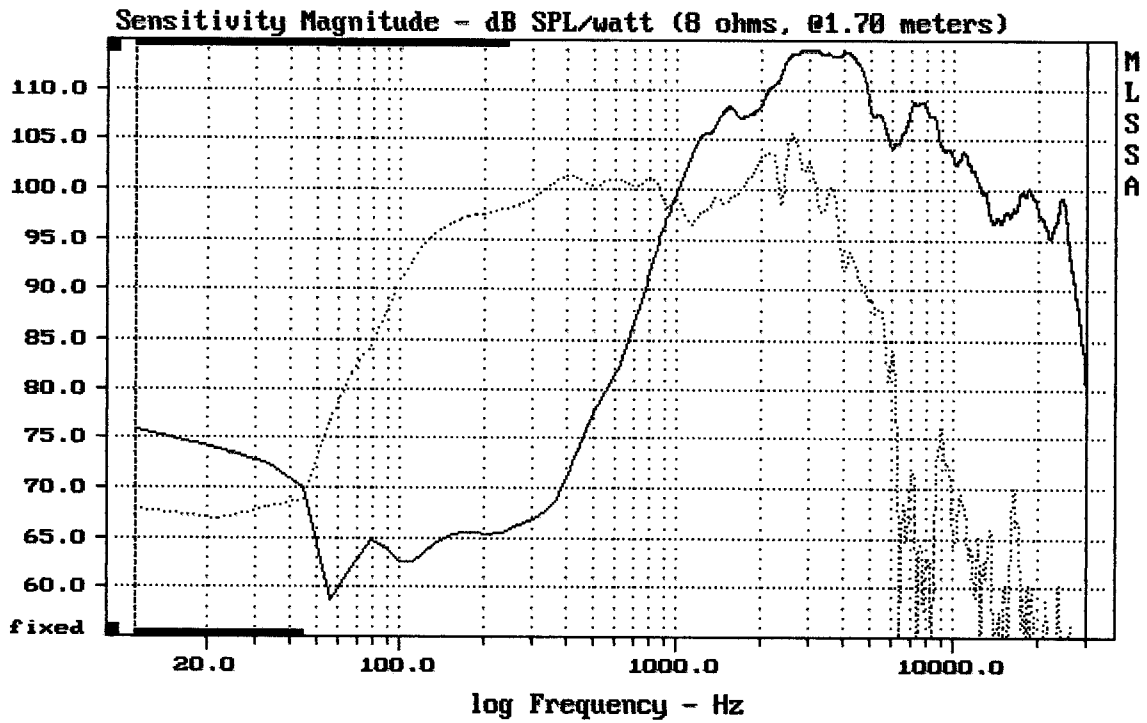
Sestava B&C Speakers 12NDL76 + BMS BMS4538 + Megaton A9090

Osazení:

- B&C Speakers 12NDL76 8/Ohm
<http://eshop.prodance.cz/DetailPage.asp?DPG=82724>
- BMS BMS4538 8/Ohm
<http://eshop.prodance.cz/DetailPage.asp?DPG=87248>
- Megaton A9090
<http://eshop.prodance.cz/DetailPage.asp?DPG=83920>

Schéma výhybky:

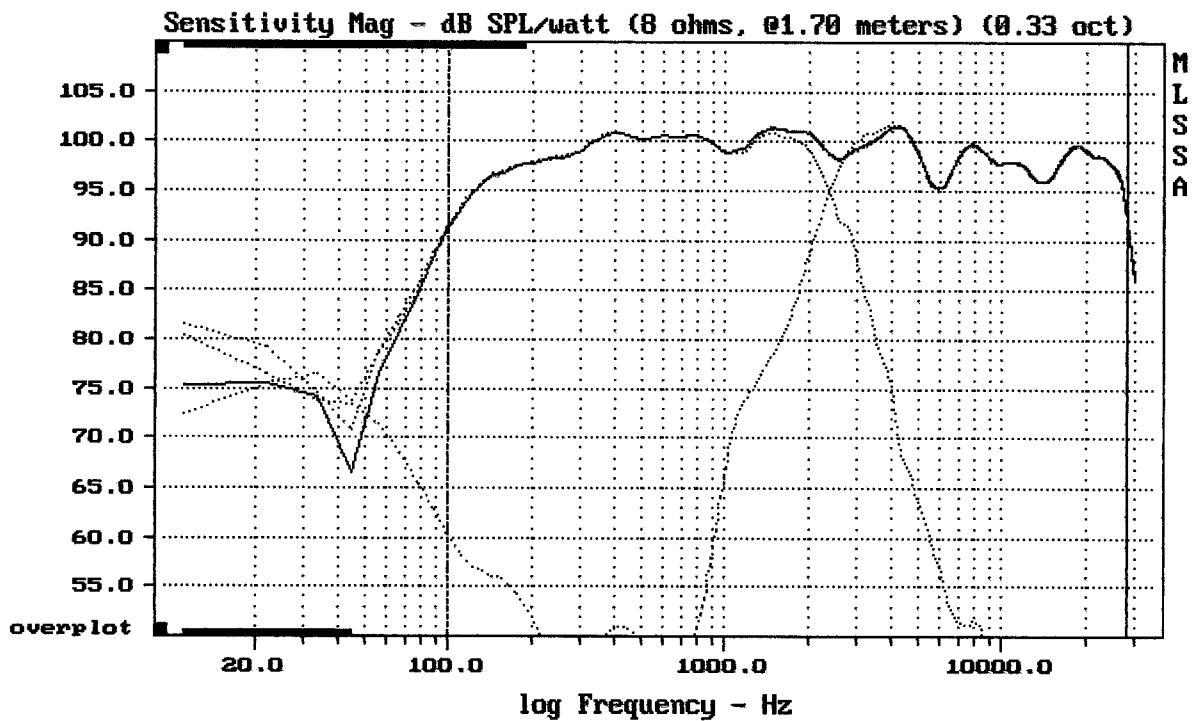




CURSOR: dy = -42.1011 x = 30007.1014 (2704)

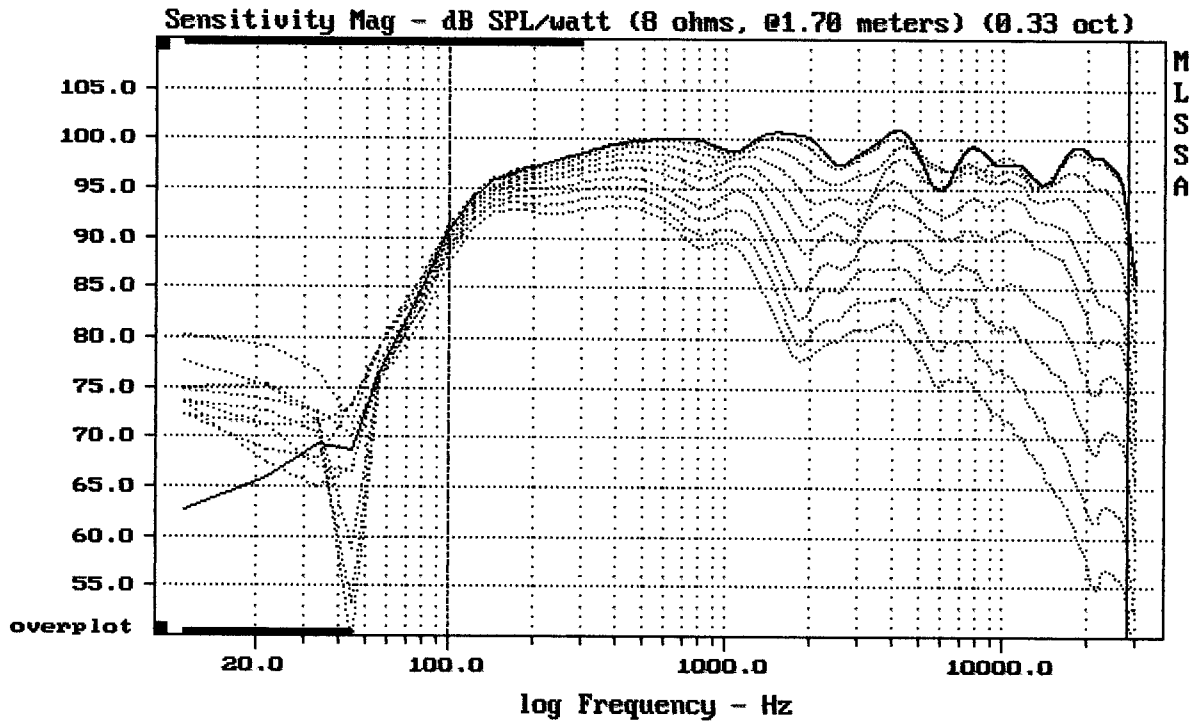
12NDL76 + BMS4538 + A9090

MLSSA: Frequency Domain



Level (100:20010 Hz) = 99.10 dB SPL/watt (8 ohms, @1.70 meters) (0.33 oct)

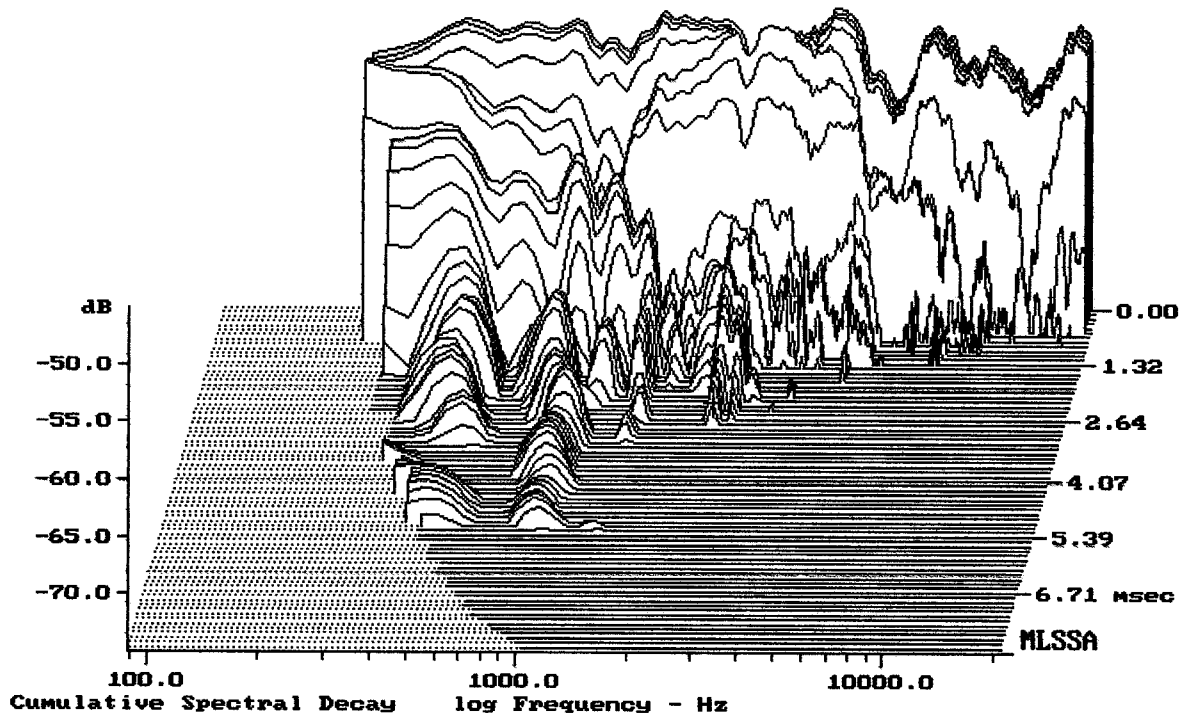
12NDL76 + BMS4538 + A9090



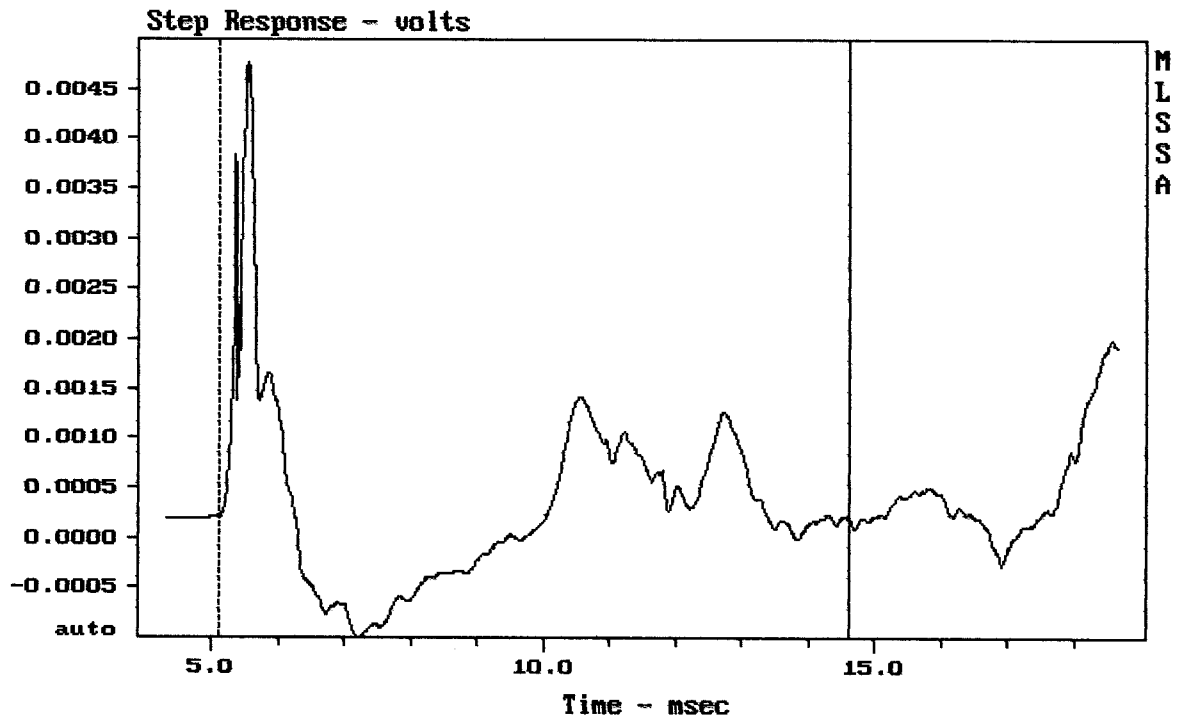
Overlay Compare: dev= +27/-13, std= 9.7, avg= -30

12NDL76 + BMS4538 + A9090

MLSSA: Frequency Domain



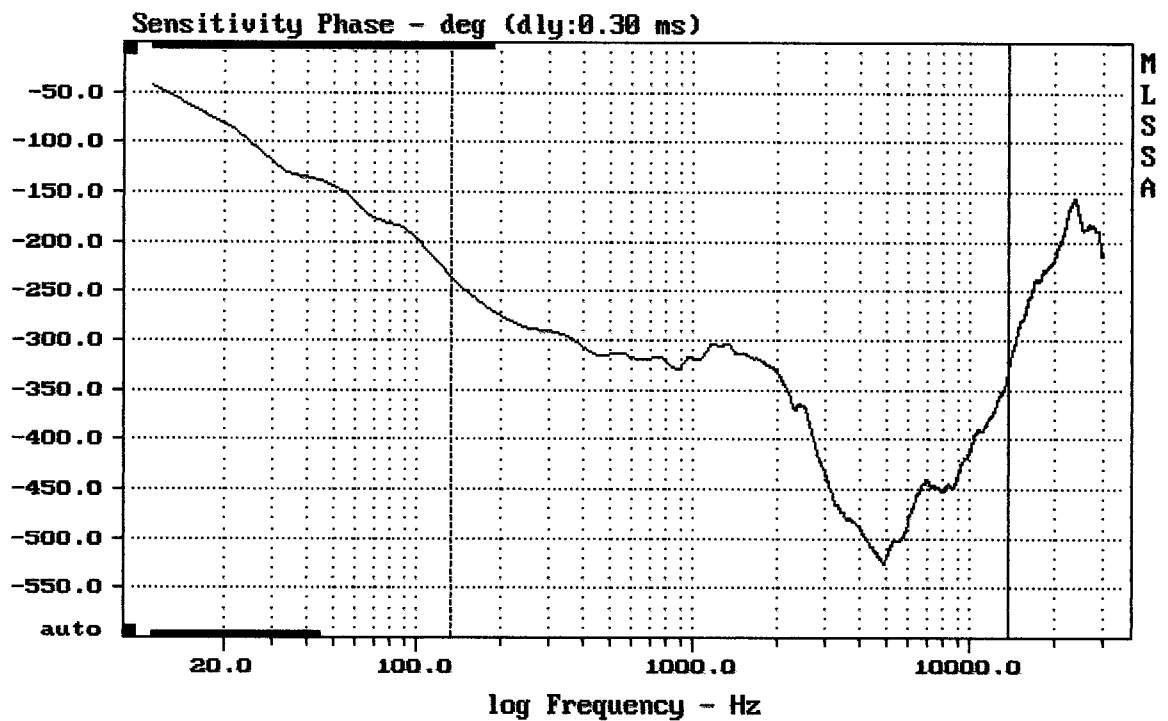
-73.20 dB, 2300 Hz (52), 2.750 msec (26)



mean: 0.0003293, rms: 0.000964, std: 0.000906, max: 0.004768, min: -0.0009974

12NDL76 + BMS4538 + A9090

MLSSA: Time Domain



mean: -412.6, rms: 417.4, std: 63.22, max: -235.8, min: -526.2

12NDL76 + BMS4538 + A9090