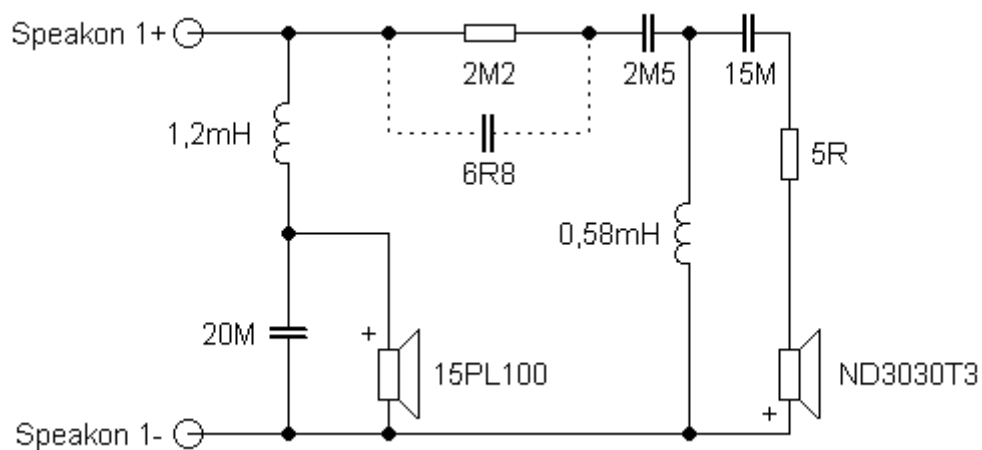


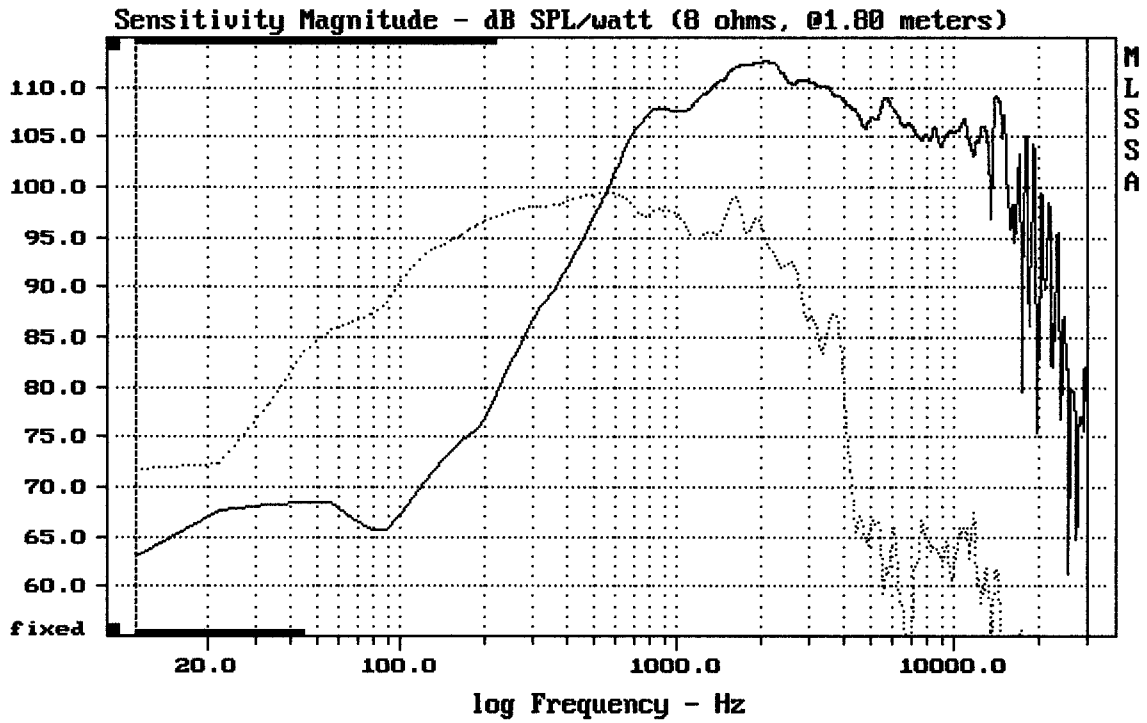
Sestava B&C Speakers 15PL100 + RCF ND3030T3 + B&C Speakers ME90

Osazení:

- B&C Speakers 15PL100 8/Ohm
<http://eshop.prodance.cz/DetailPage.asp?DPG=82880>
- RCF ND3030T3 8/Ohm
<http://eshop.prodance.cz/DetailPage.asp?DPG=79637>
- B&C Speakers ME90
<http://eshop.prodance.cz/DetailPage.asp?DPG=80246>

Schéma výhybky:

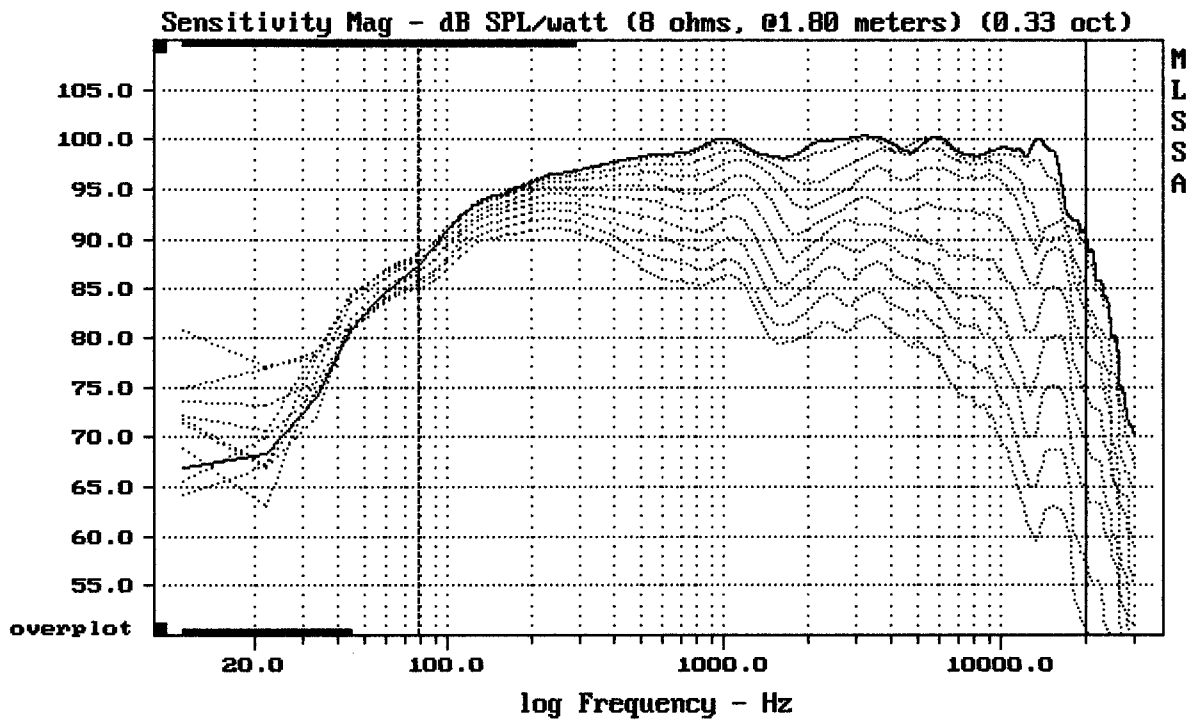




CURSOR: dy = -49.0481 x = 29996.0041 (2703)

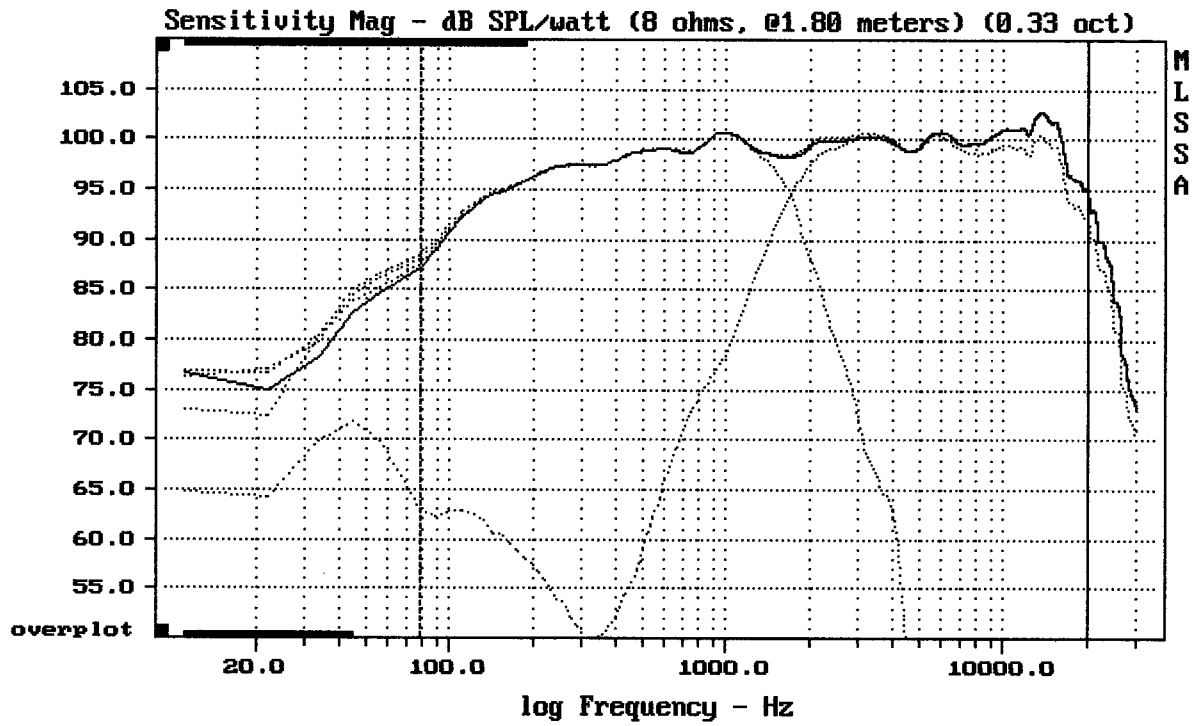
15PL100 + ND3030 + ME90

MLSSA: Frequency Domain



Overlay Compare: dev= +26/-12, std= 8.6, avg= -28

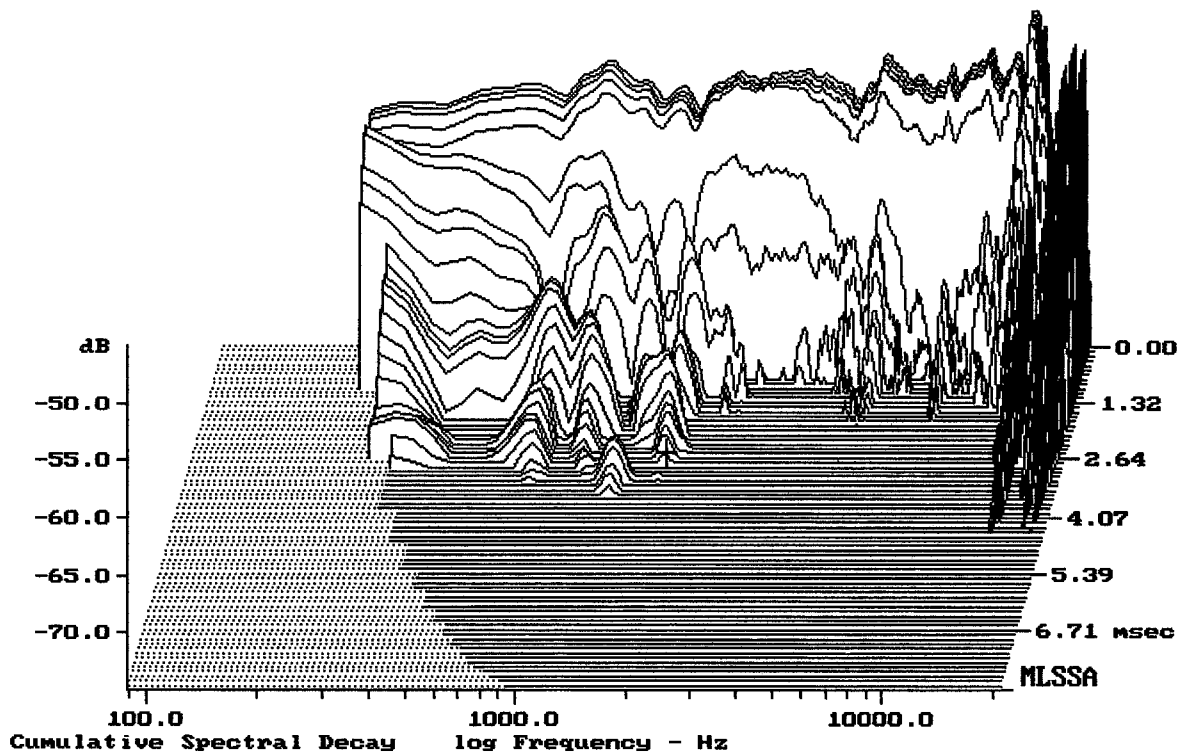
15PL100 + ND3030 + ME90



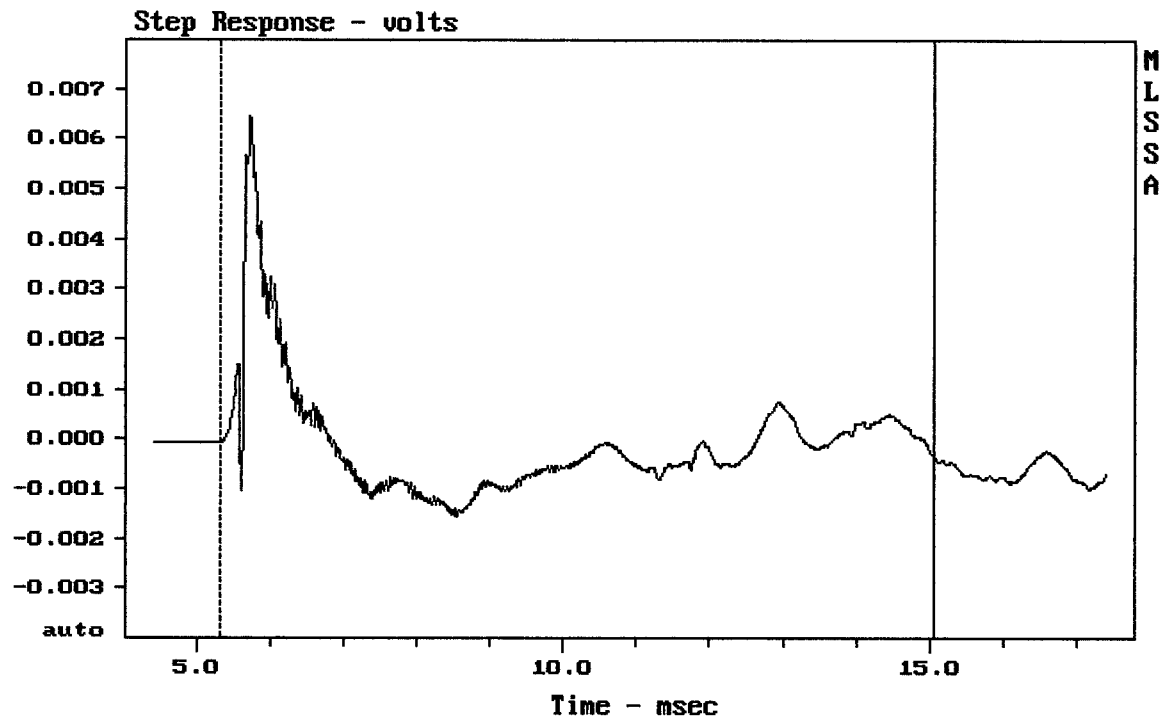
Level (78:20000 Hz) = 98.85 dB SPL/watt (8 ohms, @1.80 meters) (0.33 oct)

15PL100 + ND3030 + ME90

MLSSA: Frequency Domain



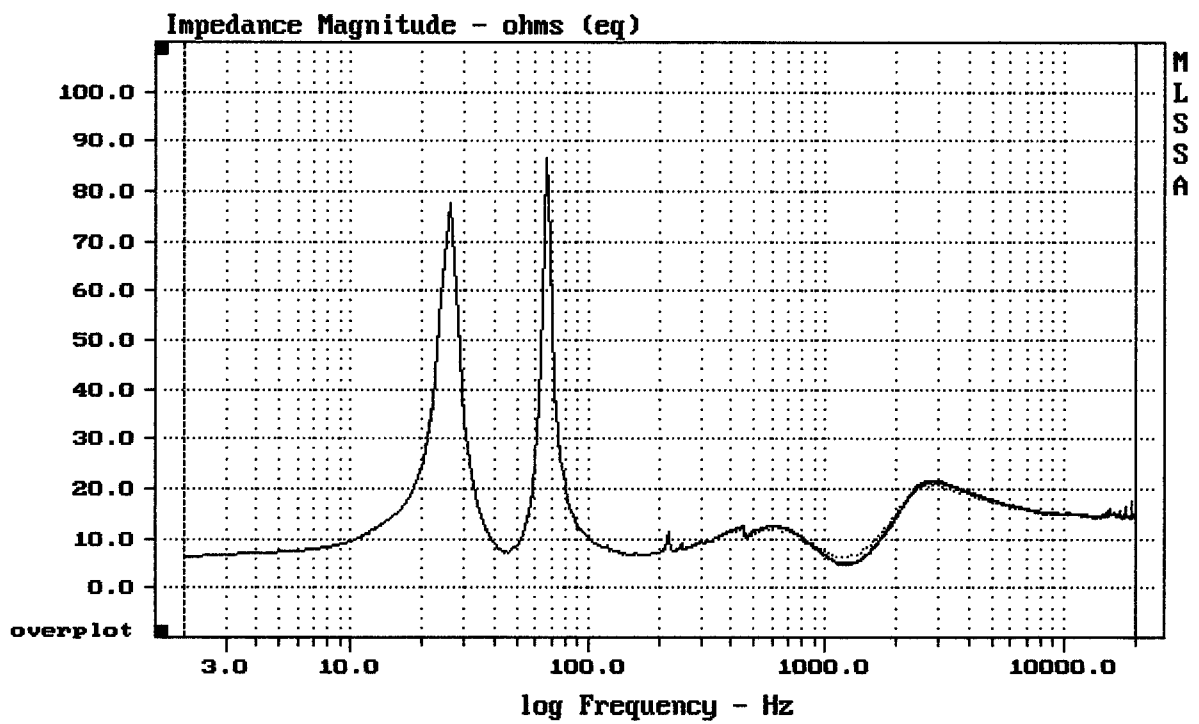
-74.15 dB, 1731 Hz (39), 2.750 msec (26)



mean: $-9.545e-005$, rms: 0.00116, std: 0.001156, max: 0.006429, min: -0.001543

15PL100 + ND3030 + ME90

MLSSA: Time Domain



mean: 15.23, rms: 15.52, std: 2.979, max: 85.7, min: 6.233

15PL100 + ND3030 + ME90