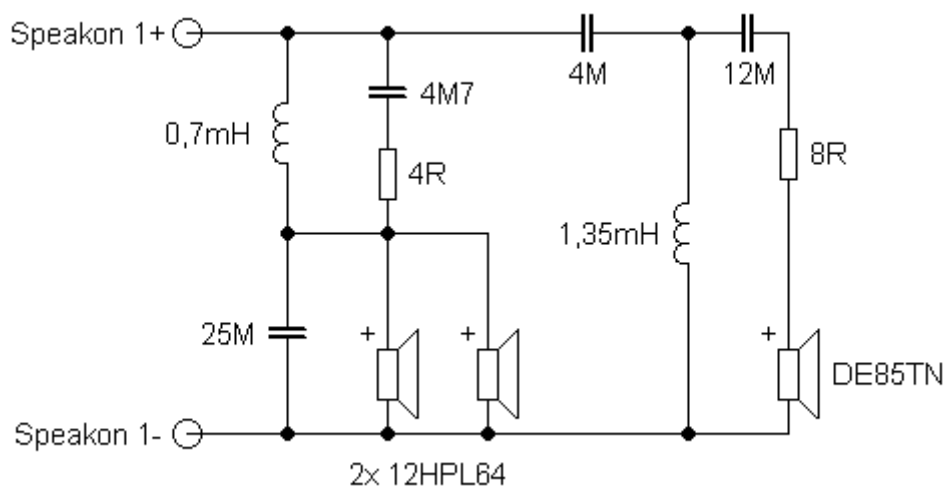


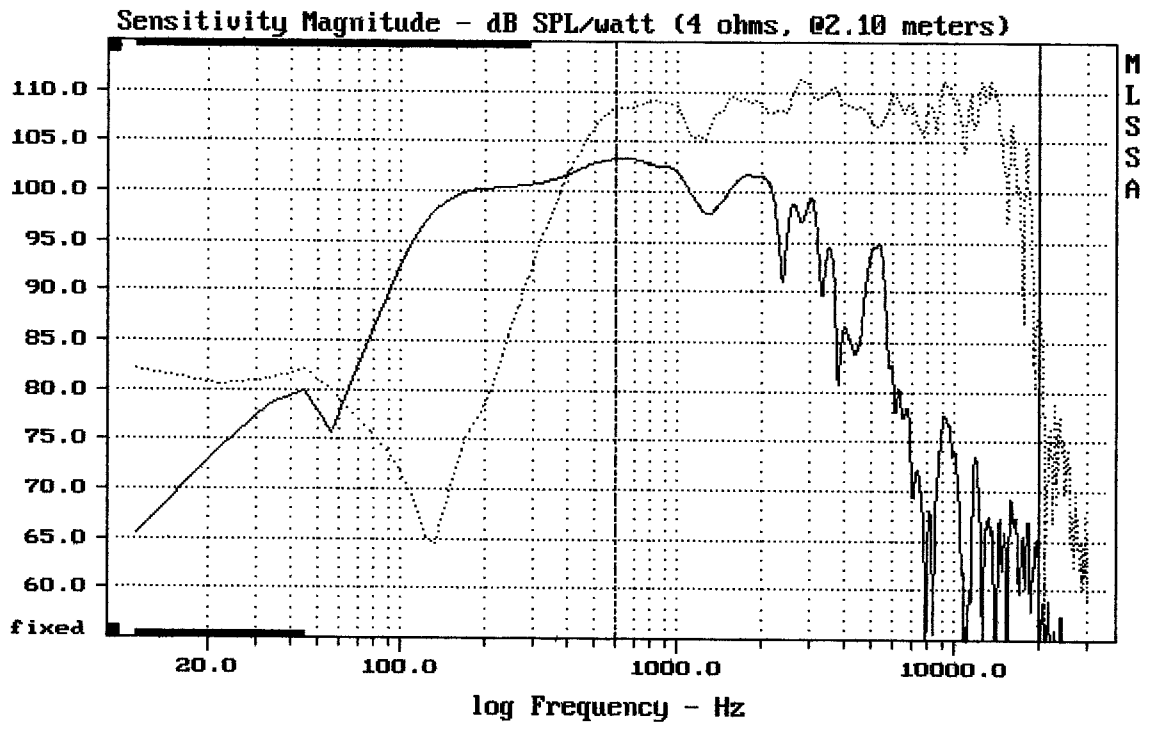
Sestava 2x B&C Speakers 12HPL64 + DE85TN + ME60

Osazení:

- 2x B&C Speakers 12HPL64 8/Ohm
<http://eshop.prodance.cz/DetailPage.asp?DPG=82706>
- B&C Speakers DE85TN 8/Ohm
<http://eshop.prodance.cz/DetailPage.asp?DPG=82336>
- B&C Speakers ME60
<http://eshop.prodance.cz/DetailPage.asp?DPG=80243>

Schéma výhybky:

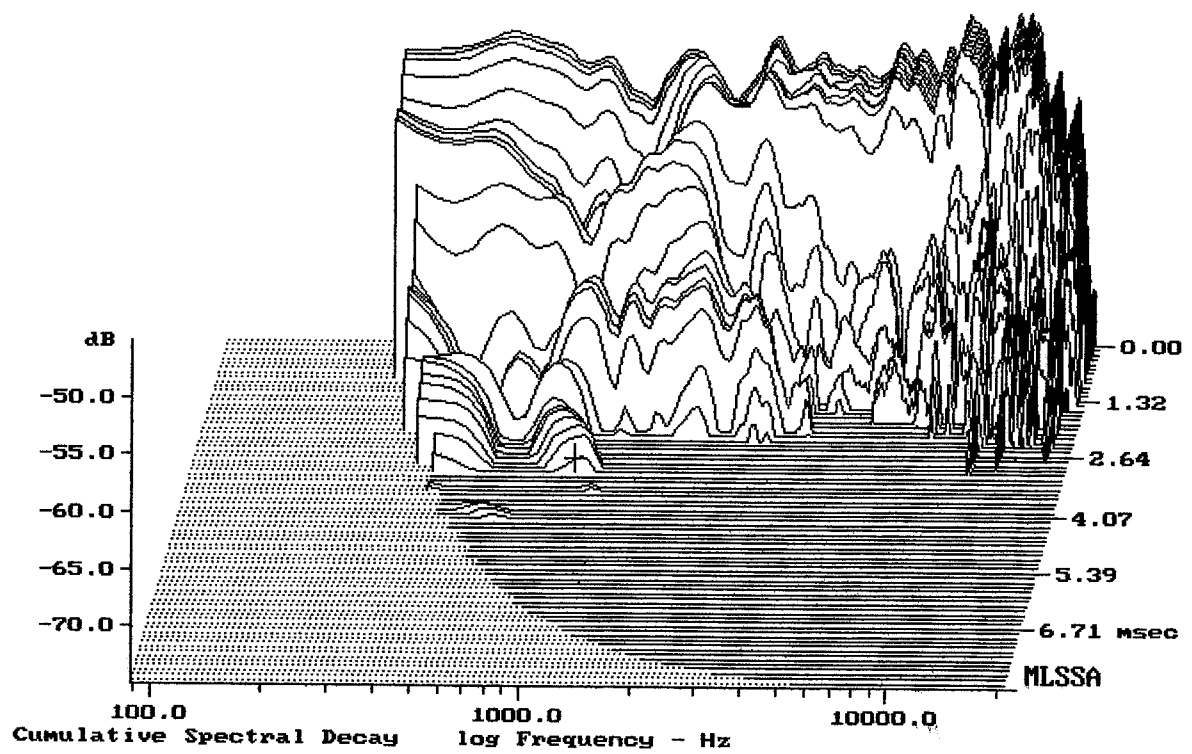




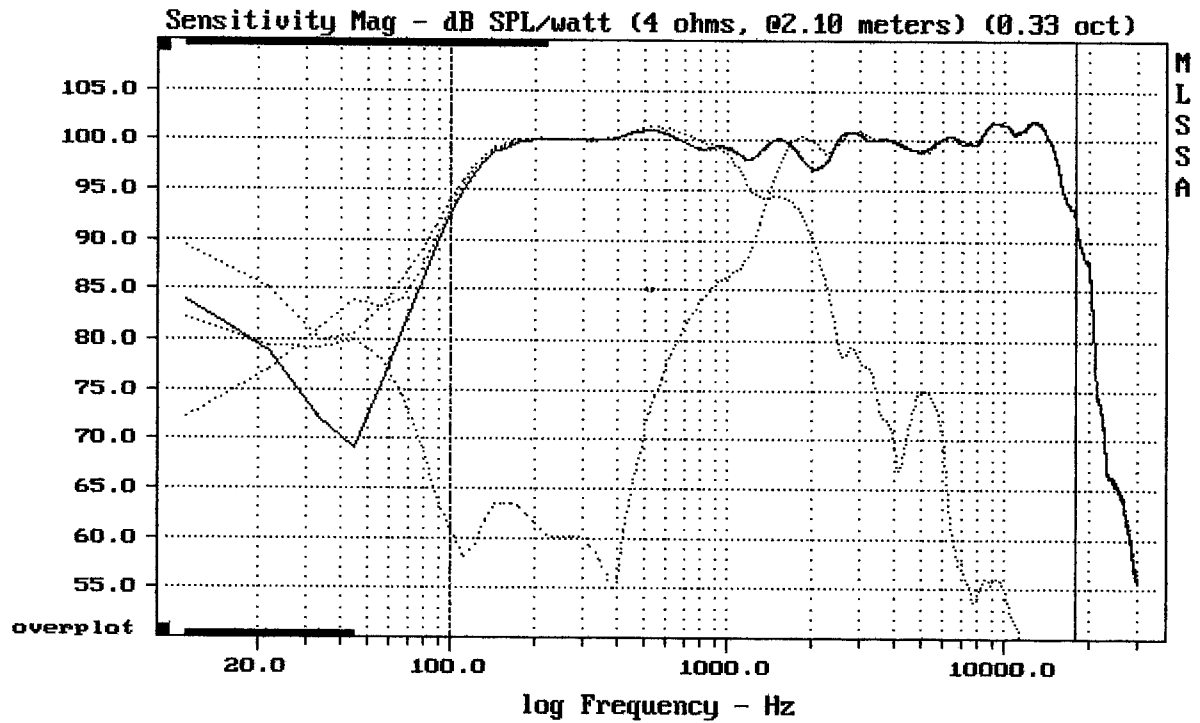
CURSOR: dy = 24.2603 x = 19997.3360 (1802)

2x12HPL64 + DE85 + ME60

MLSSA: Frequency Domain



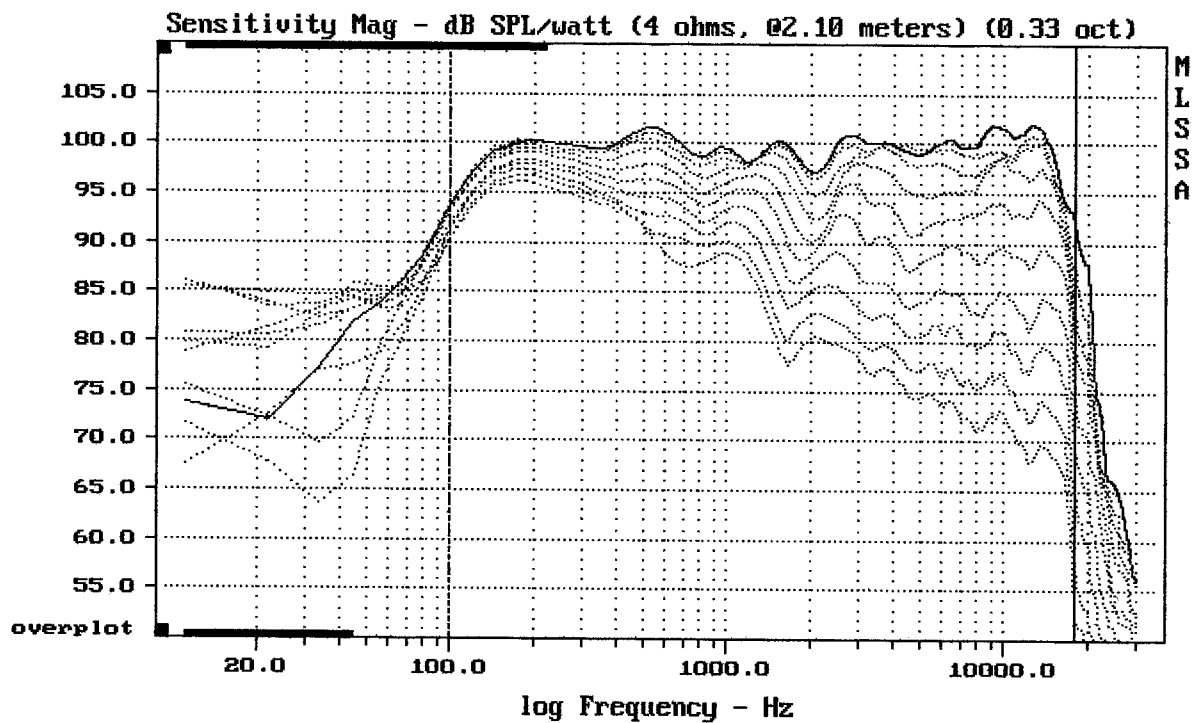
-73.83 dB, 977 Hz (22), 3.080 msec (29)



Level (100:18000 Hz) = 99.74 dB SPL/watt (4 ohms, @2.10 meters) (0.33 oct)

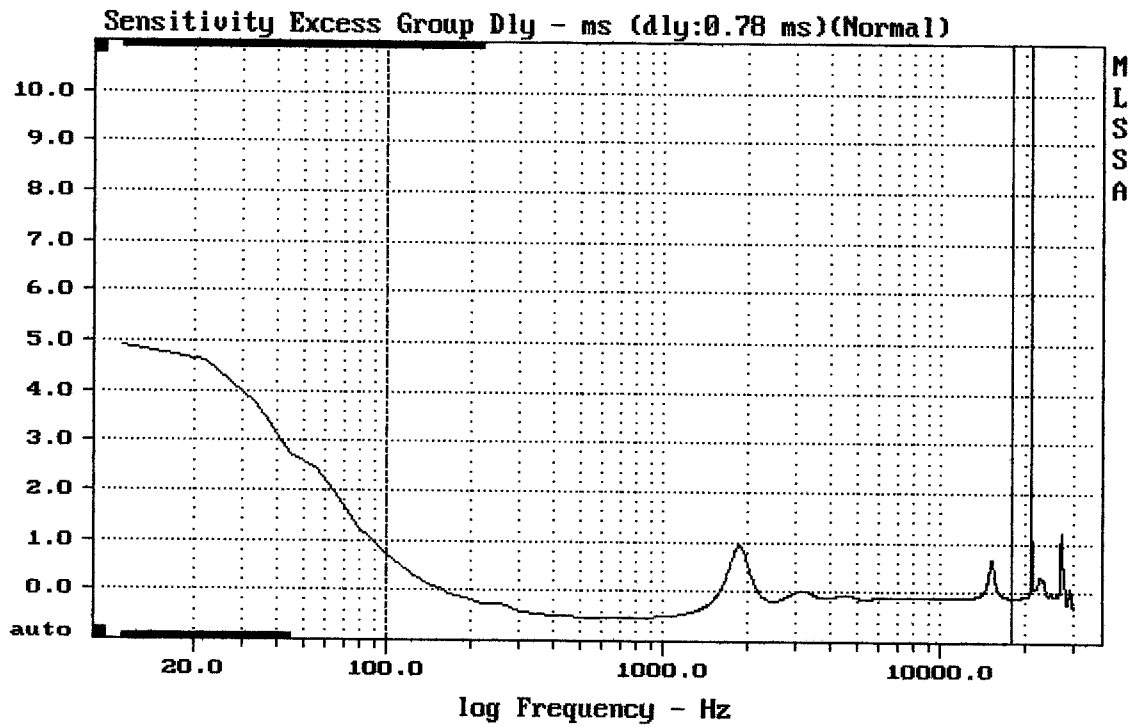
2x12HPL64 + DE85 + ME60

MLSSA: Frequency Domain



Overlay Compare: dev= +23/-13, std= 6.3, avg= -27

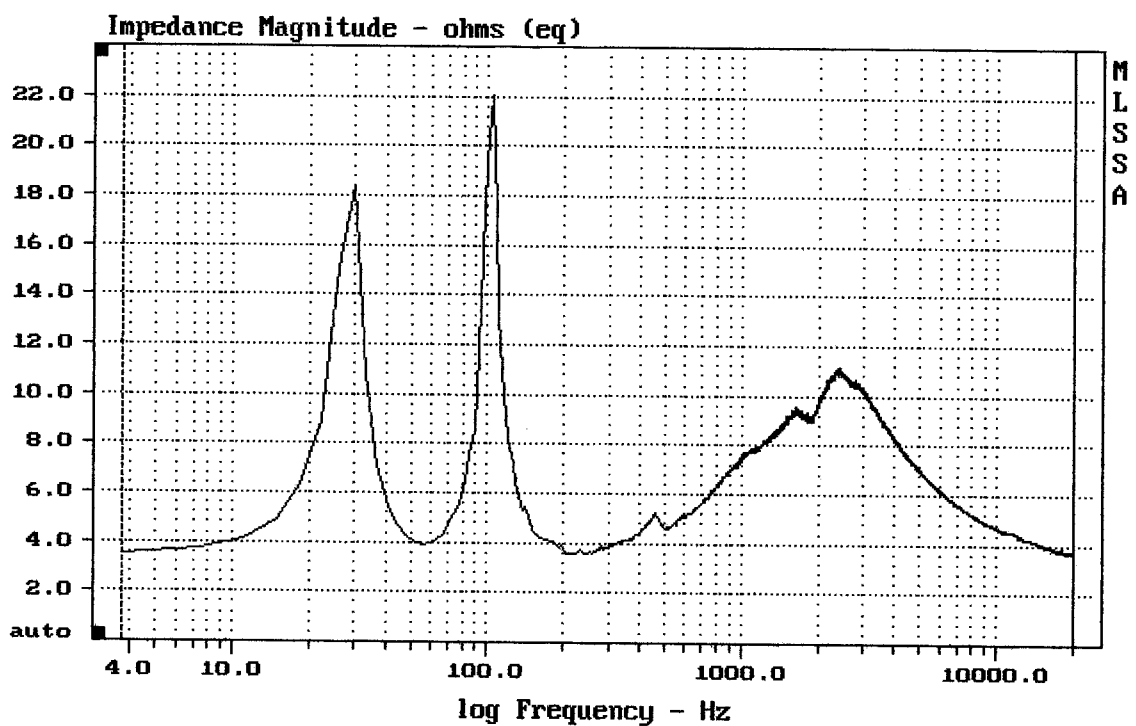
2x12HPL64 + DE85 + ME60



CURSOR: $y = -0.0881165$ $x = 17999.8219$ (1622)

2x12HPL64 + DE85 + ME60

MLSSA: Frequency Domain



mean: 5.5, rms: 5.868, std: 2.046, max: 22.07, min: 3.475

2x12HPL64 + DE85 + ME60