

SESTAVA 2x B&C Speakers 12PE32 + B&C SPeakers DE85 + Megaton ME60

Komponenty sestavy:

B&C Speakers 12PE32

<http://eshop.prodance.cz/12pe32-8-ohm/d-82733/>

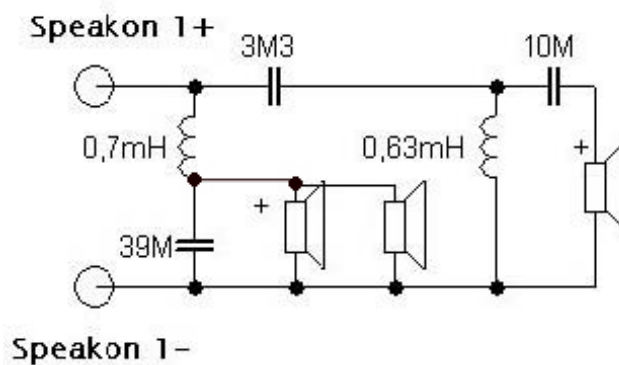
B&C Speakers DE85

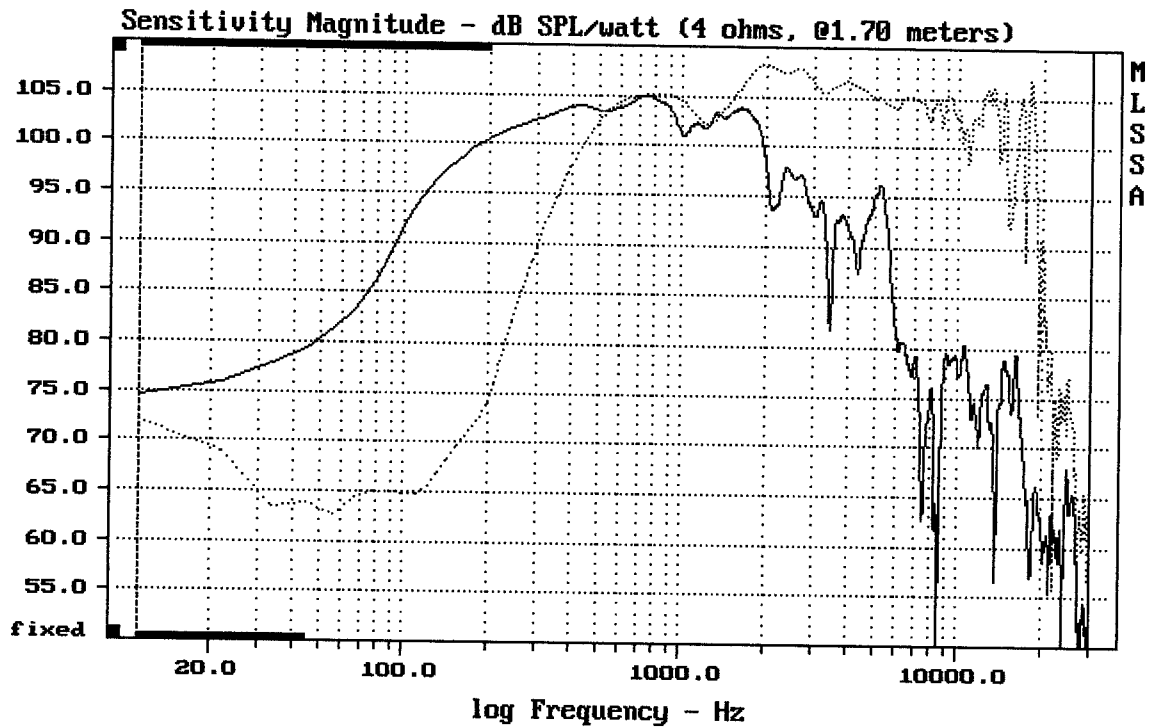
<http://eshop.prodance.cz/detailpage.asp?DPG=82334>

Megaton ME60

<http://eshop.prodance.cz/detailpage.asp?DPG=80243>

Schéma výhybky:

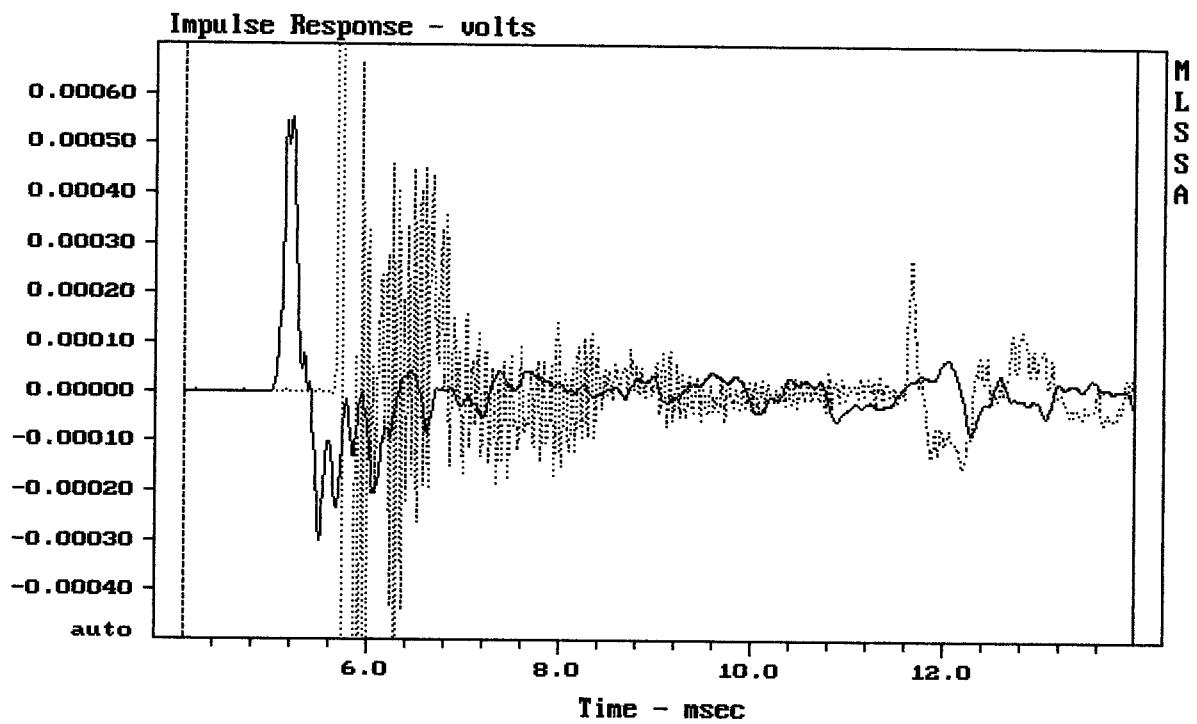




CURSOR: $\Delta y = 16.4568$ $x = 30007.1014$ (2704)

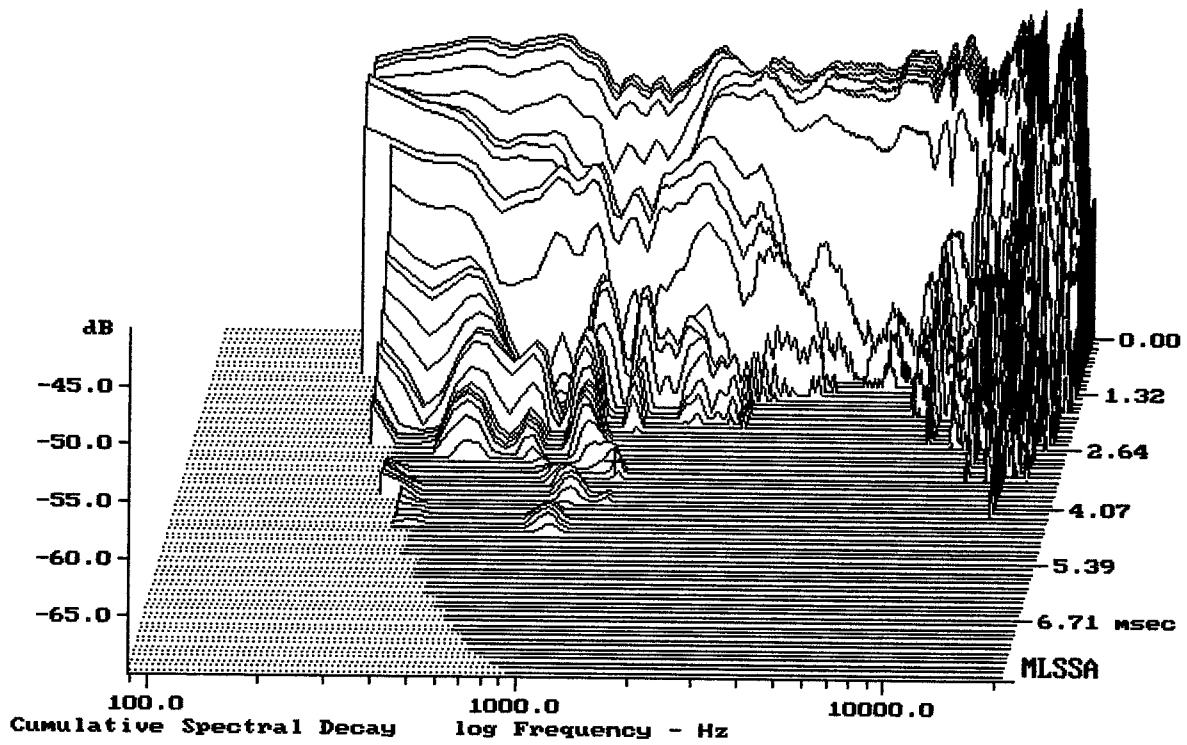
2X 12PE32 + DE85 + ME60

MLSSA: Frequency Domain



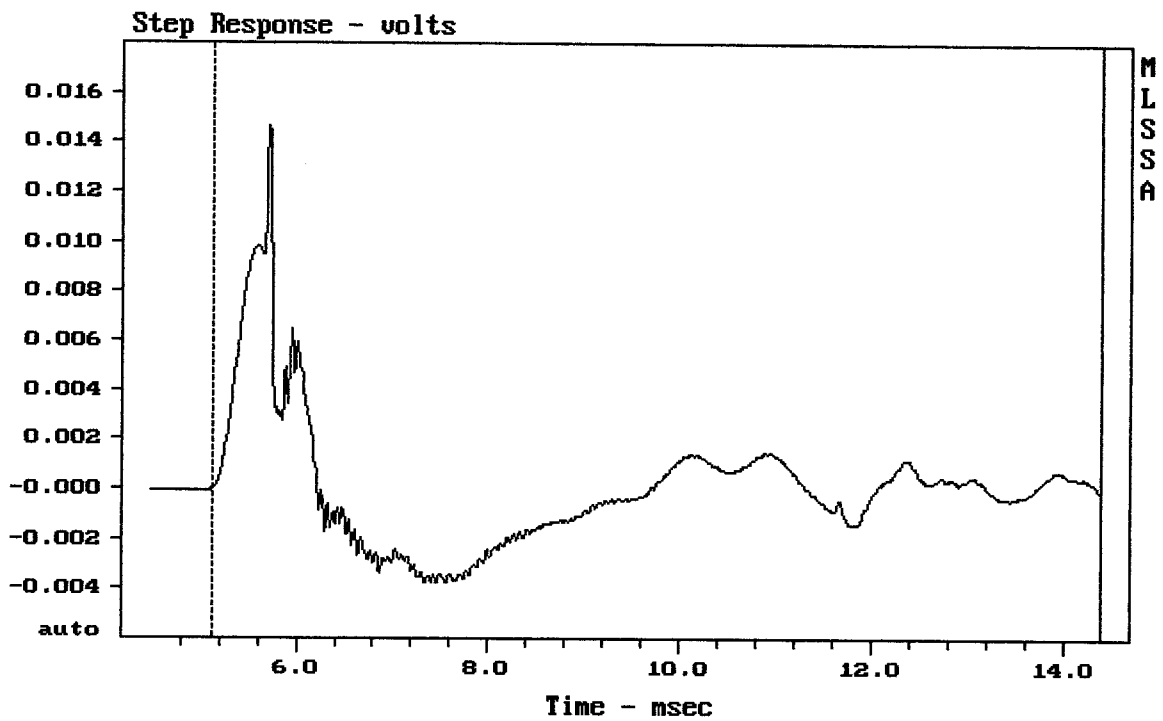
CURSOR: $\Delta y = 6.71152e-005$ $x = 13.9810$ (1271)

2X 12PE32 + DE85 + ME60



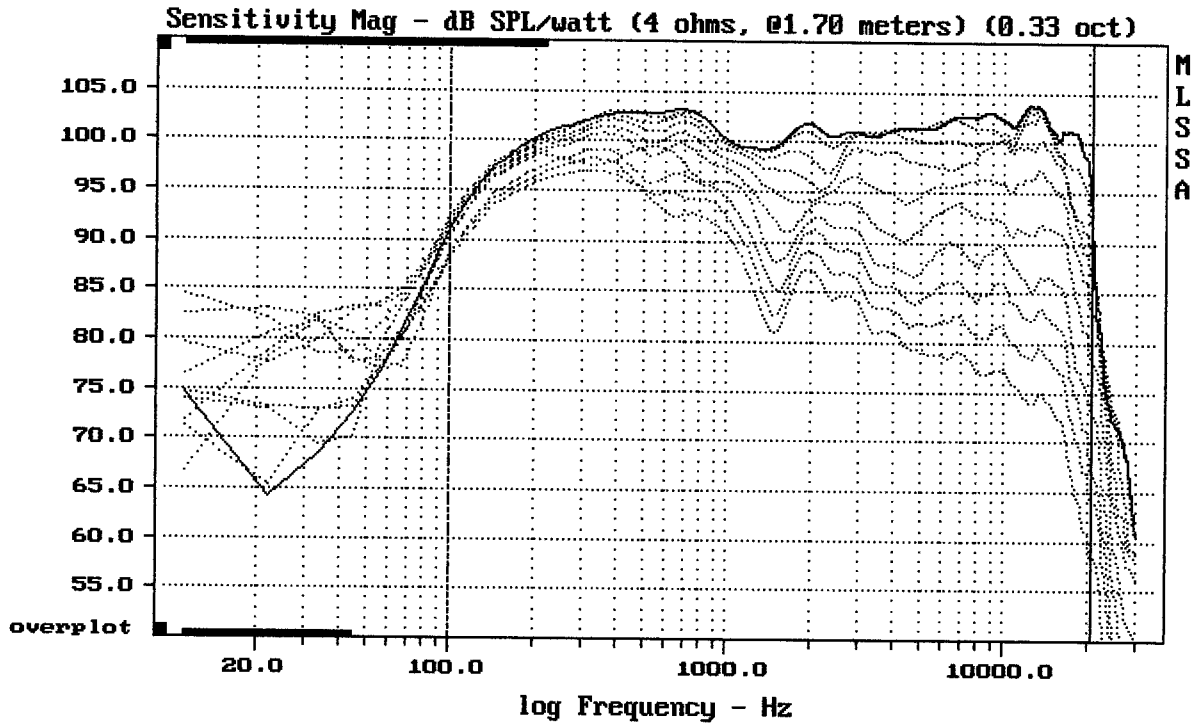
-68.89 dB, 1287 Hz (29), 3.300 msec (31)

DTTO



mean: 5.738e-005, rms: 0.002597, std: 0.002596, max: 0.01463, min: -0.003761

2X 12PE32 + DE85 + ME60

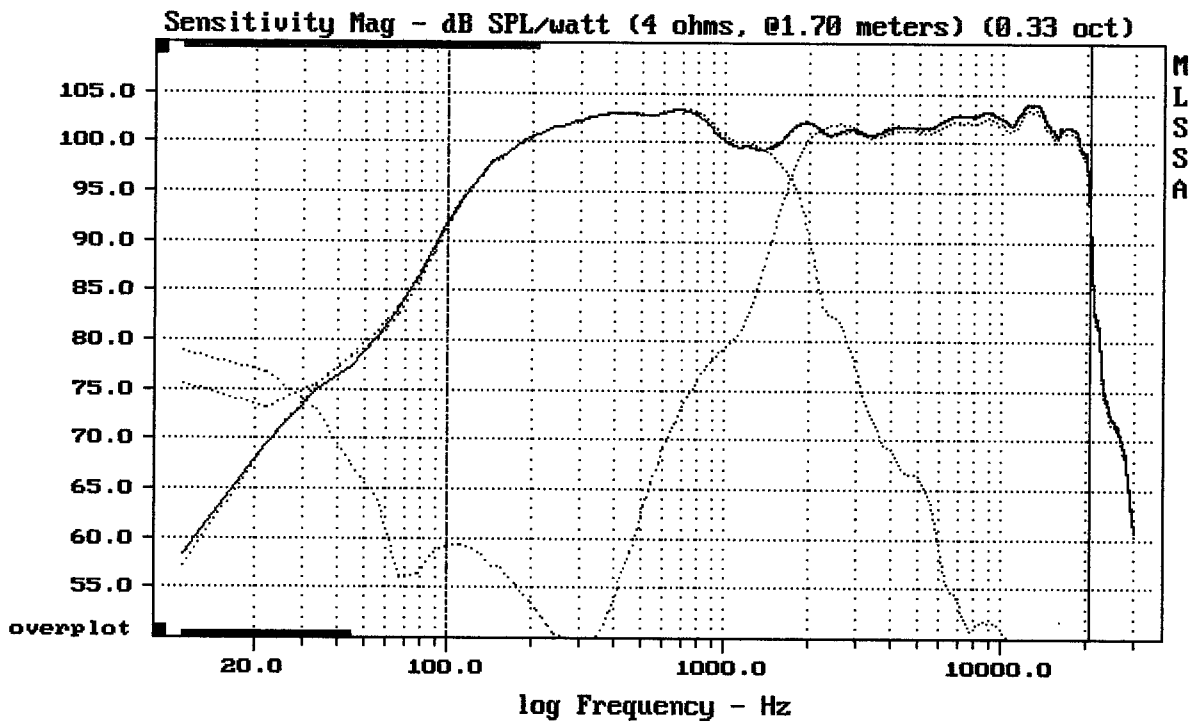


Overlay Compare: dev= +23/-12, std= 7.2, avg= -26

2X 12PE32 + DE85 + ME60

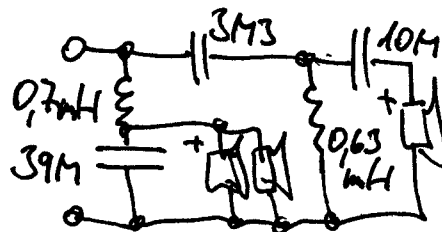
9-22-89 4:37 PM

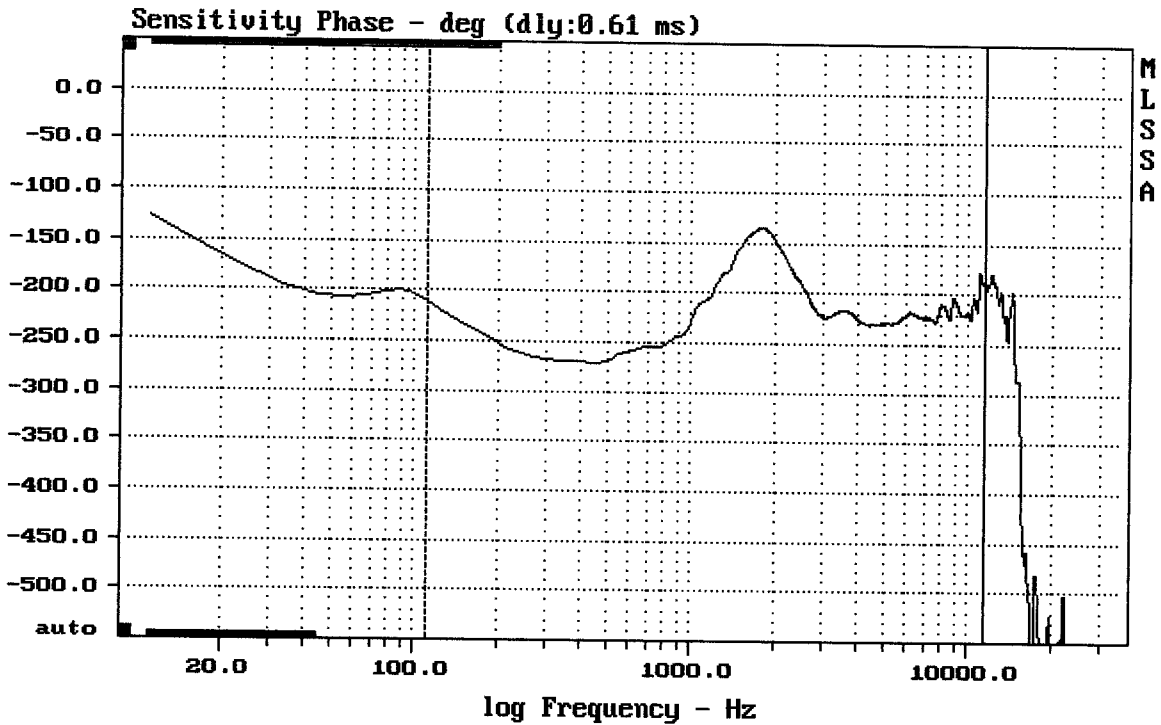
MLSSA: Frequency Domain



Level (100:20000 Hz) = 101.29 dB SPL/watt (4 ohms, @1.70 meters) (0.33 oct)

2X 12PE32 + DE85 + ME60



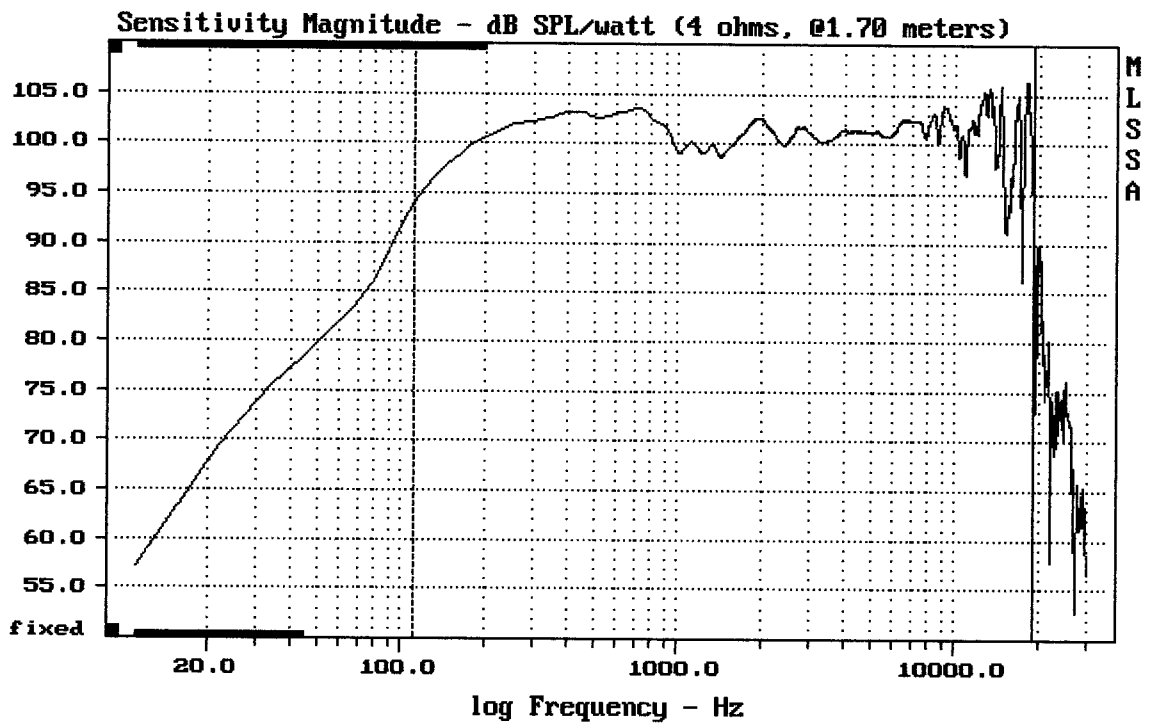


mean: -214.2, rms: 215.7, std: 25.04, max: -134.3, min: -271.1

2X 12PE32 + DE85 + ME60

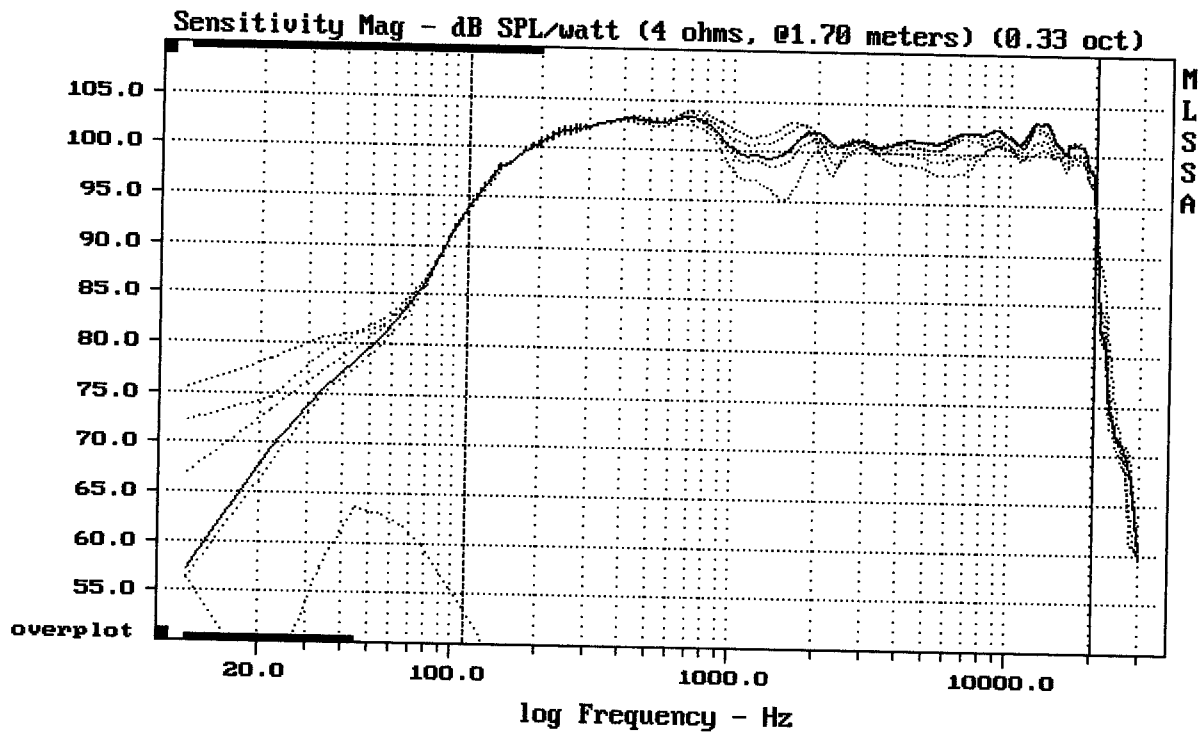
9-22-89 4:42 PM

MLSSA: Frequency Domain



mean: 101.42, rms: 101.77, std: 2.21, max: 106.27, min: 86.30

2X 12PE32 + DE85 + ME60

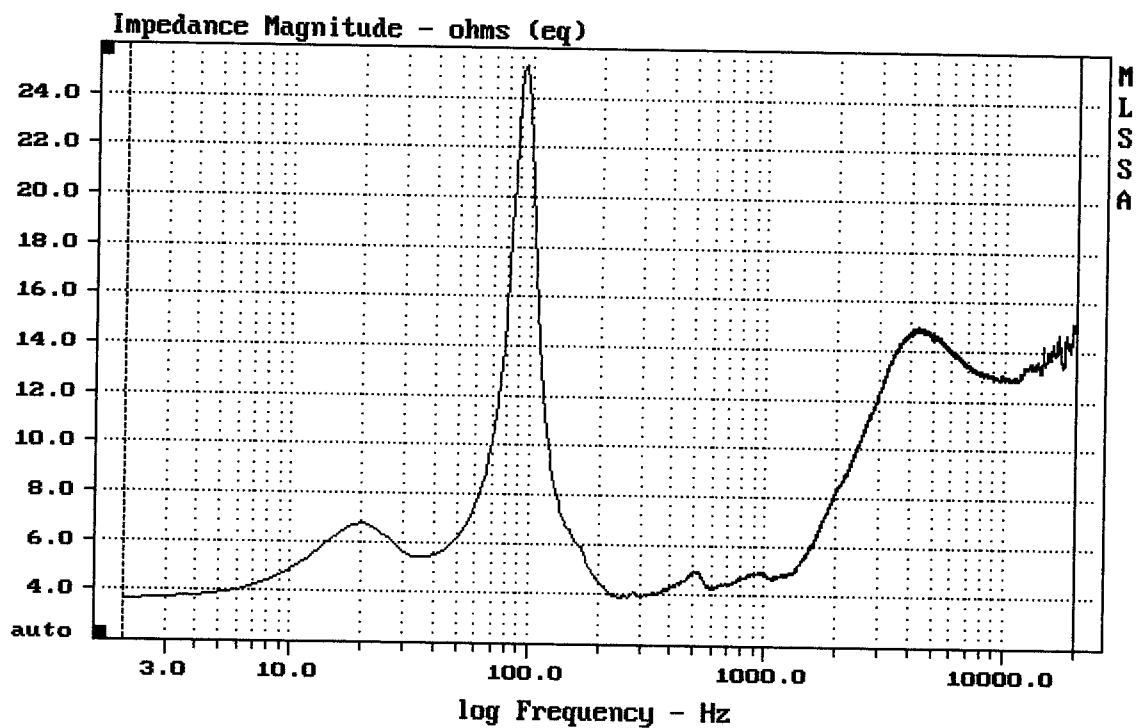


mean: 100.60, rms: 100.60, std: 1.14, max: 102.81, min: 94.02

ZX 12PE32 + DE85 + ME60

9-22-89 4:46 PM

MLSSA: Frequency Domain



mean: 12.73, rms: 13.01, std: 2.65, max: 25.28, min: 3.631

ZX 12PE32 + DE85 + ME60