

Sestava B&C Speakers 12PL32 + RCF ND2530T3 + Megaton B9070

Osazení:

- B&C Speakers 12PL32 8/Ohm

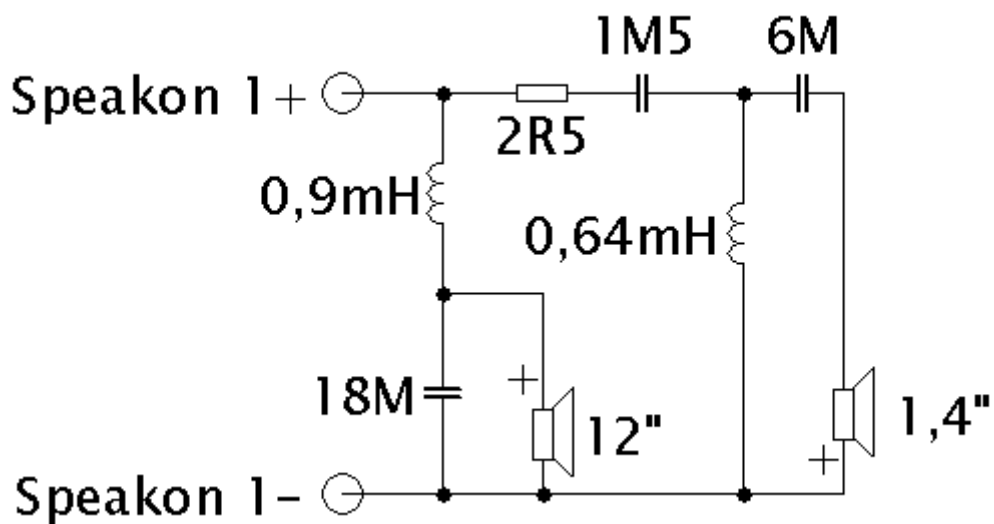
- RCF ND2530T3 8/Ohm

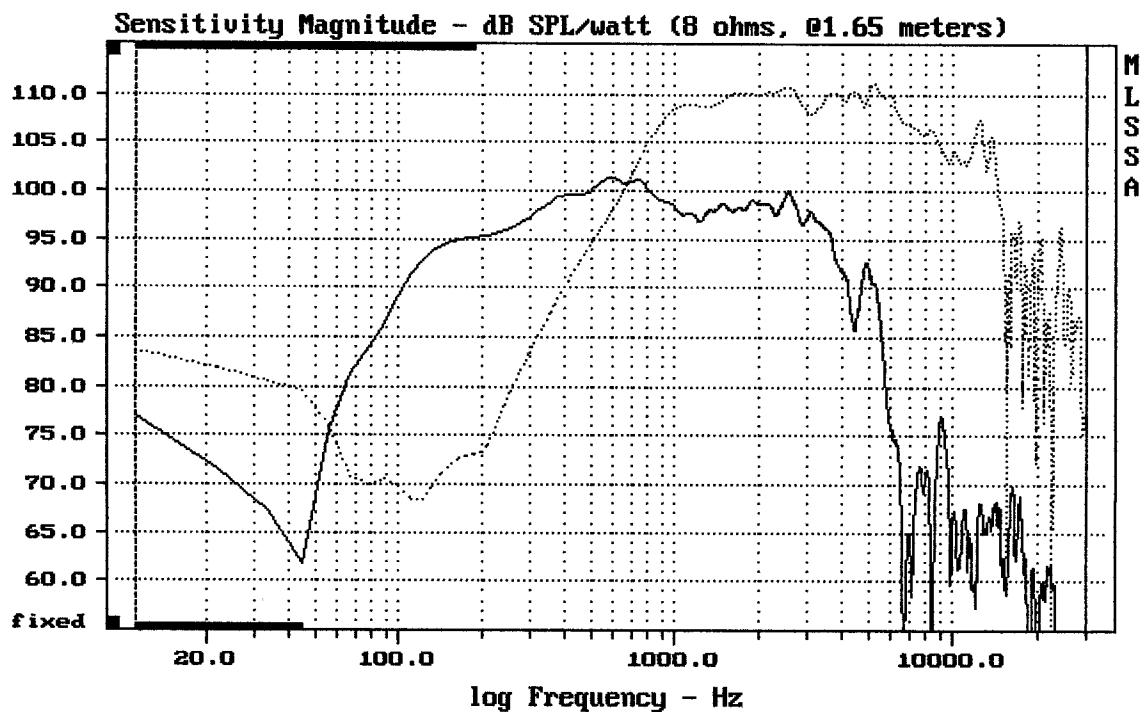
<http://eshop.prodance.cz/DetailPage.asp?DPG=79636>

- Megaton B9070

<http://eshop.prodance.cz/DetailPage.asp?DPG=84263>

Schéma výhybky:

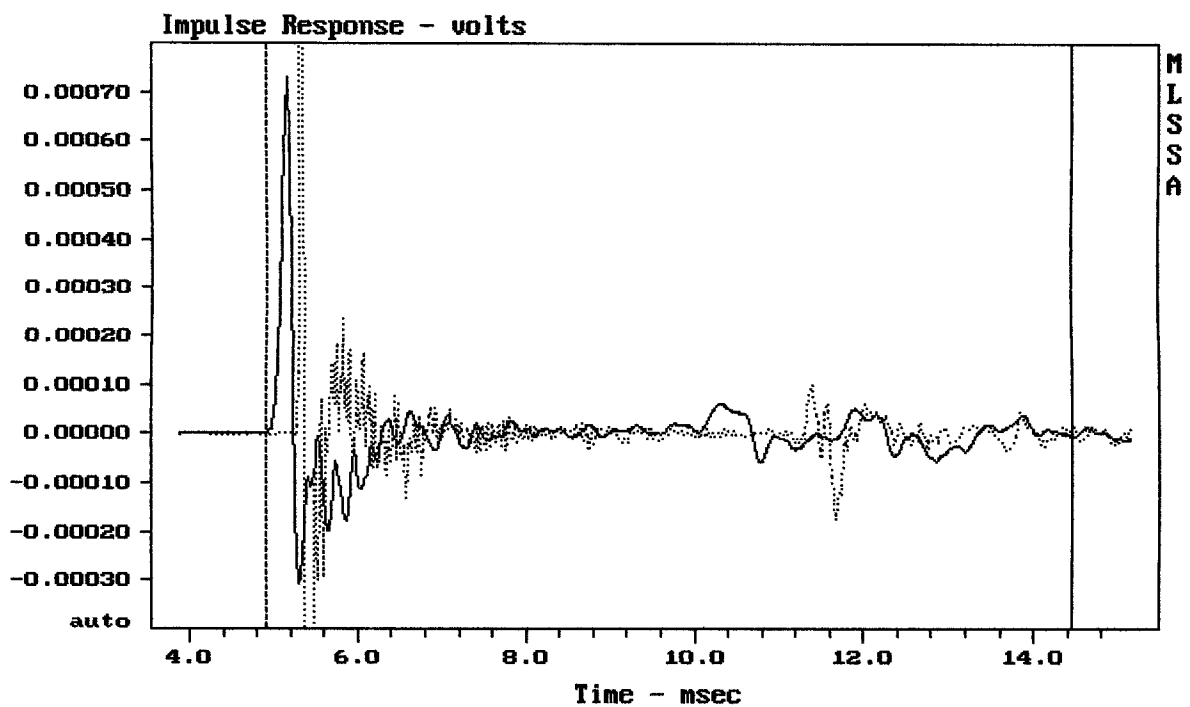




CURSOR: dy = 31.9489 x = 30007.1014 (2704)

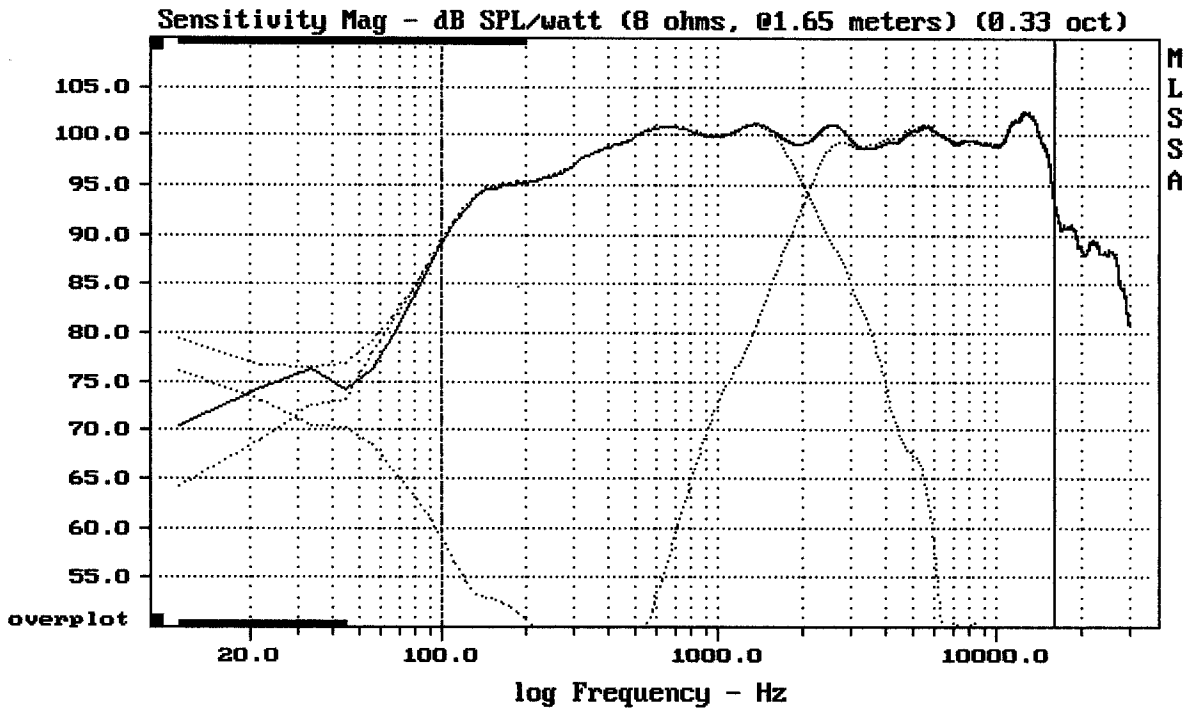
12PL32 + ND1710MT3 + ME45

MLSSA: Frequency Domain



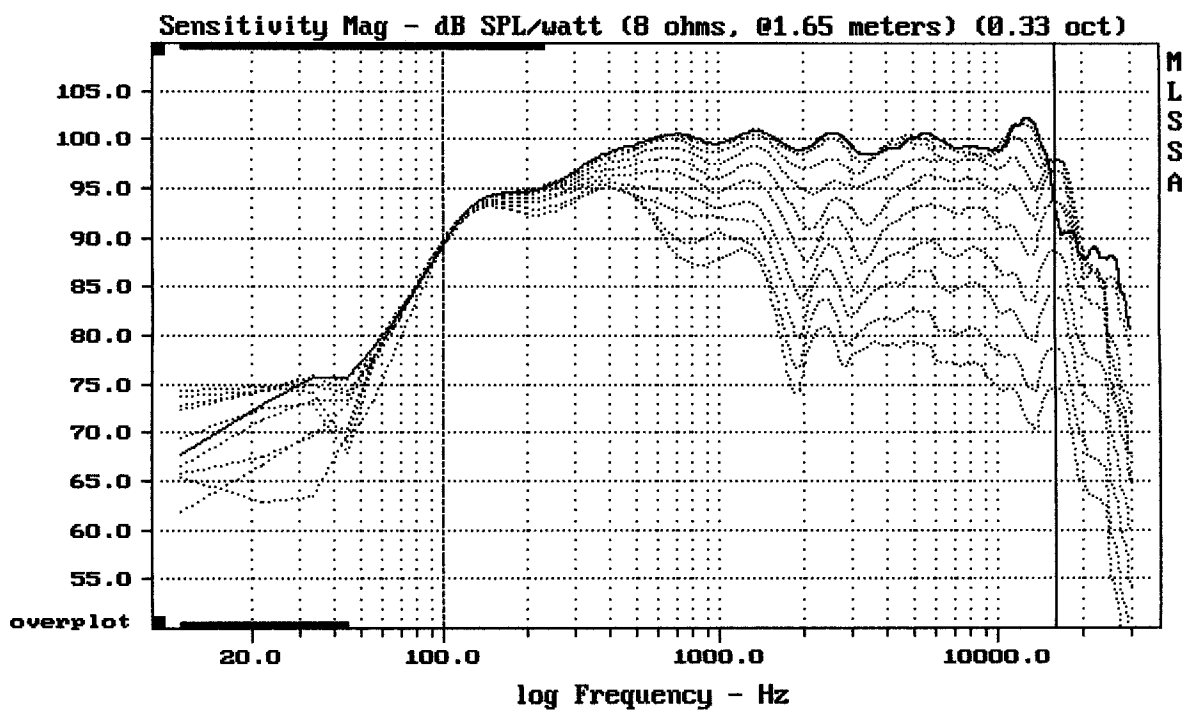
mean: -3.133e-007, rms: 0.0001128, std: 0.0001128, max: 0.001517, min: -0.0007

12PL32 + ND2530 + B9070



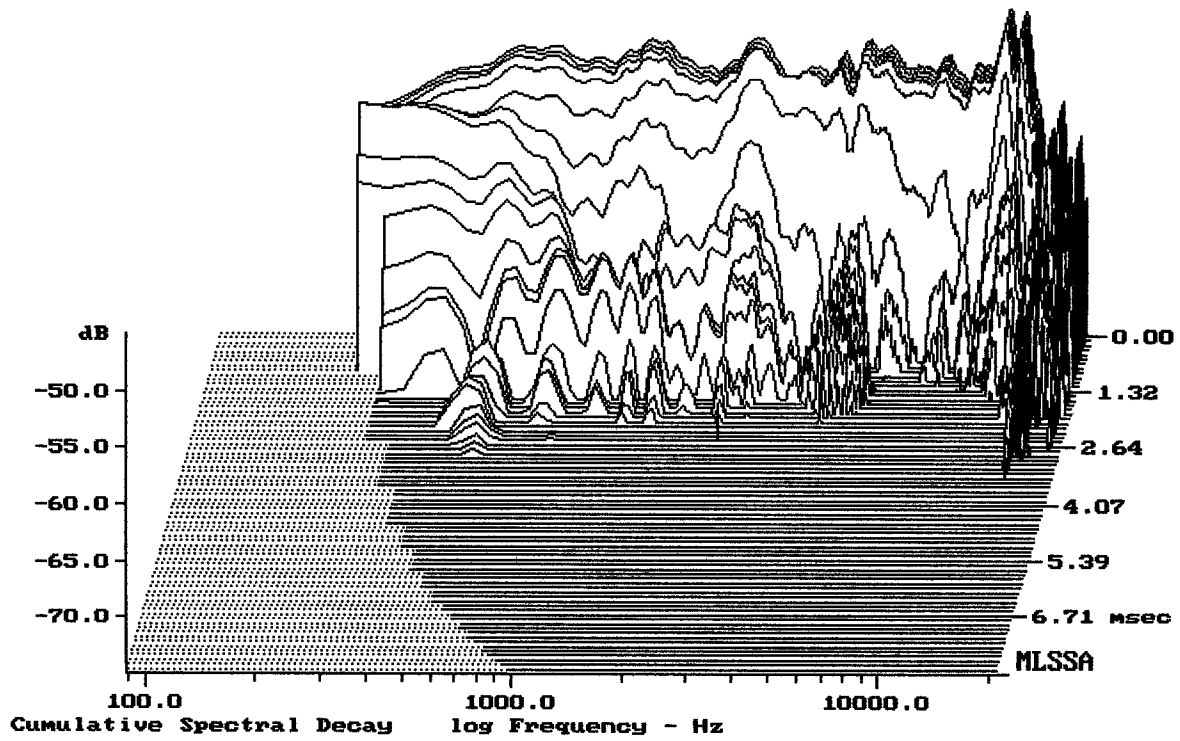
12PL32 + ND2530 + B9070

MLSSA: Frequency Domain



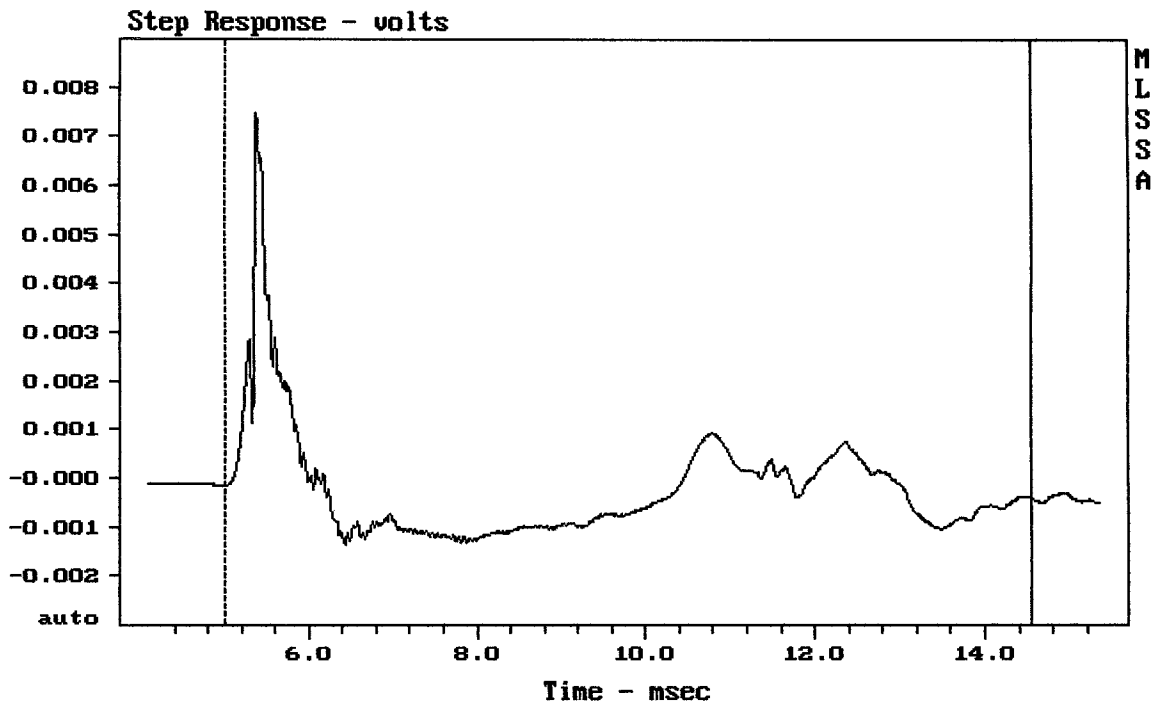
Overlay Compare: dev= +23/-8.9, std= 5.5, avg= -22

12PL32 + ND2530 + B9070



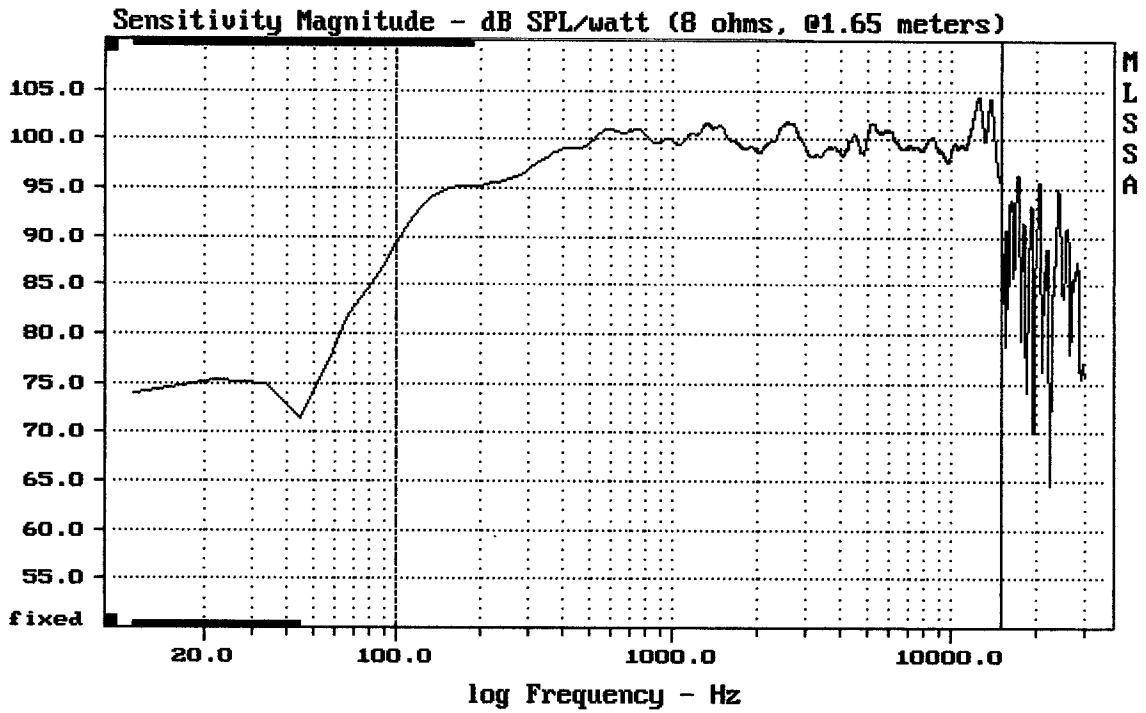
-75.00 dB, 2353 Hz (53), 2.200 msec (21)

DTTO



CURSOR: y = -0.000412424 x = 14.5420 (1322)

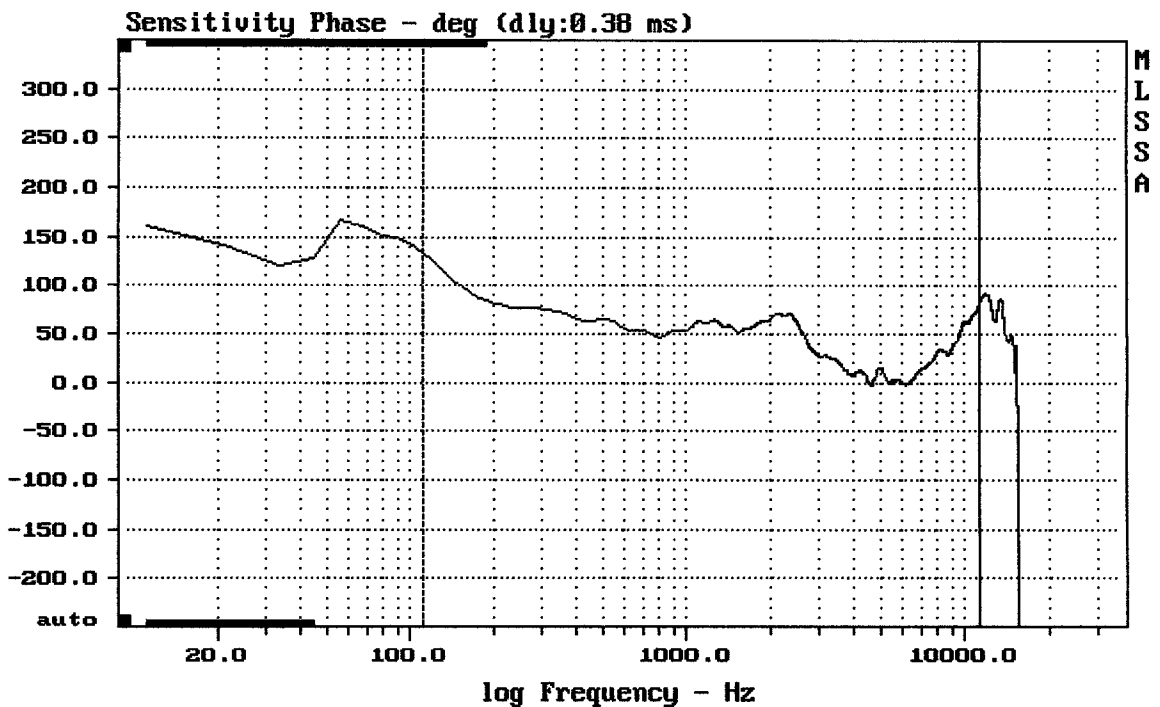
12PL32 + ND2530 + B9070



Level (100:15203 Hz) = 99.27 dB SPL/watt (8 ohms, @1.65 meters)

12PL32 + ND2530 + B9070

MLSSA: Frequency Domain



mean: 36.11, rms: 44.46, std: 25.93, max: 134.7, min: -2.603

12PL32 + ND2530 + B9070