

## Sestava Eminence Gamma-10 + Selenium DT150

### *Osazení:*

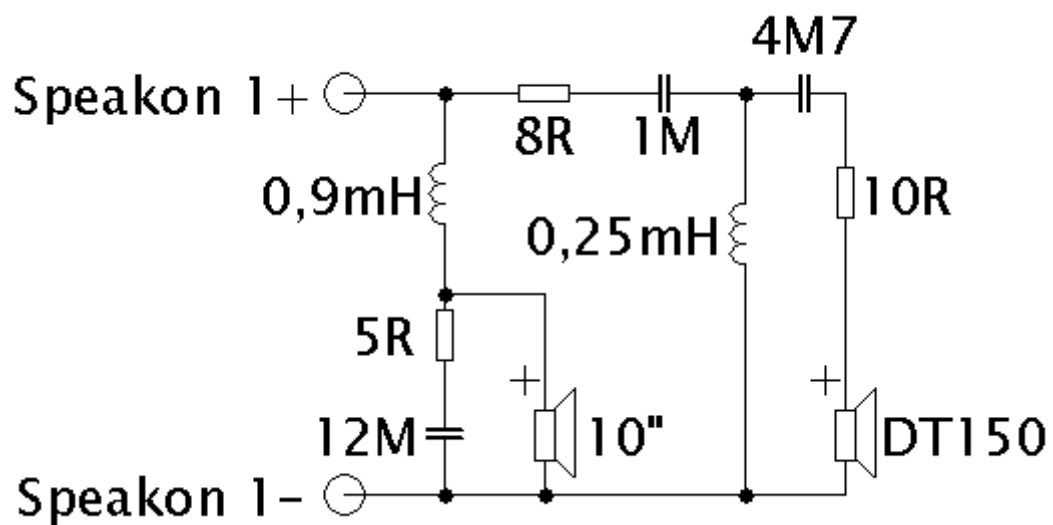
- Eminence Gamma-10 8/Ohm

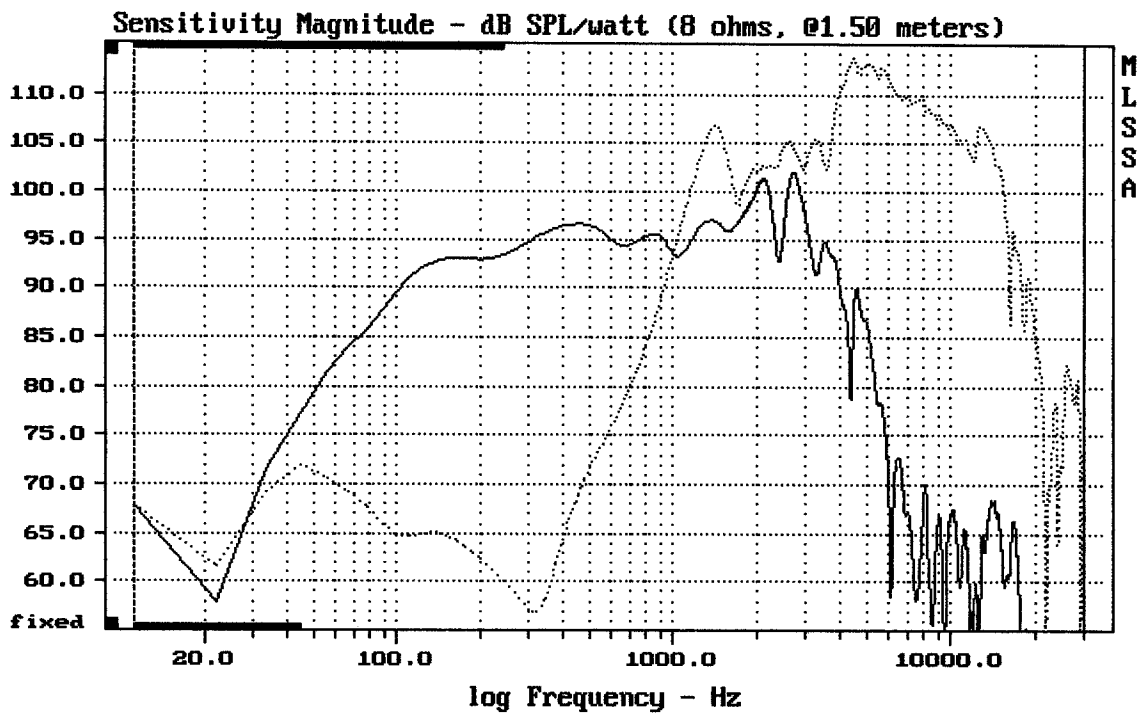
<http://eshop.prodance.cz/DetailPage.asp?DPG=81921>

- Selenium DT150 8/Ohm

<http://eshop.prodance.cz/DetailPage.asp?DPG=82055>

### *Schéma výhybky:*

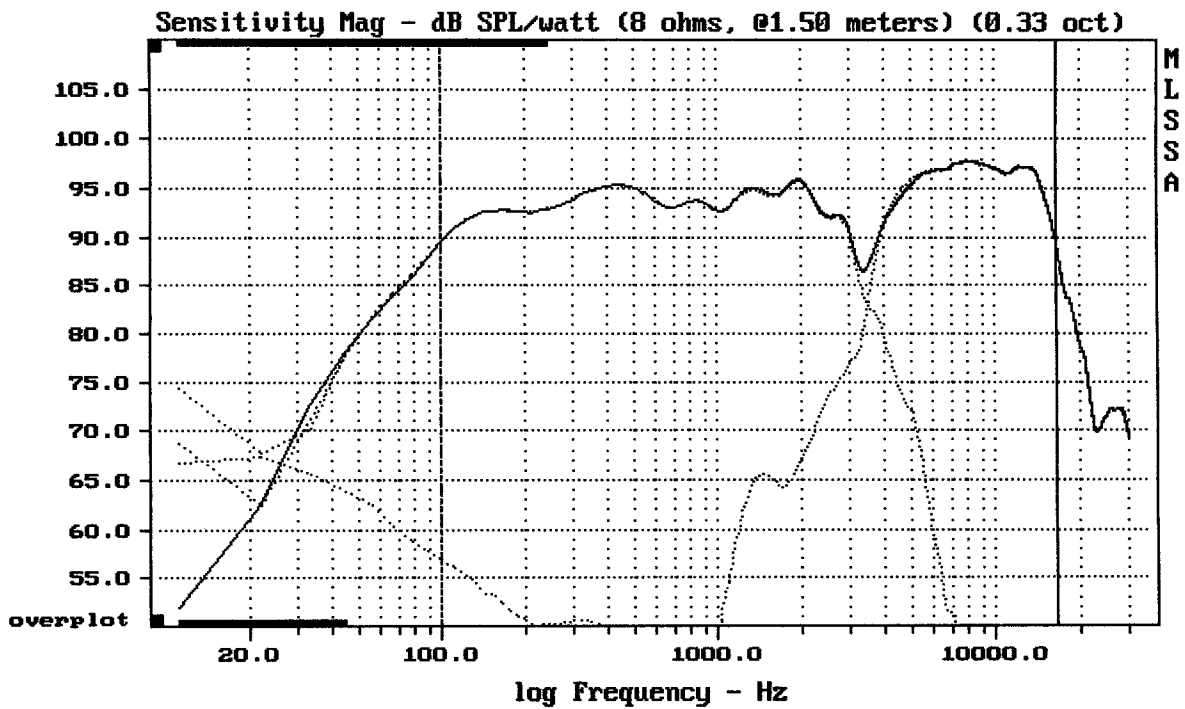




CURSOR: dy = 41.777 x = 30007.1014 (2704)

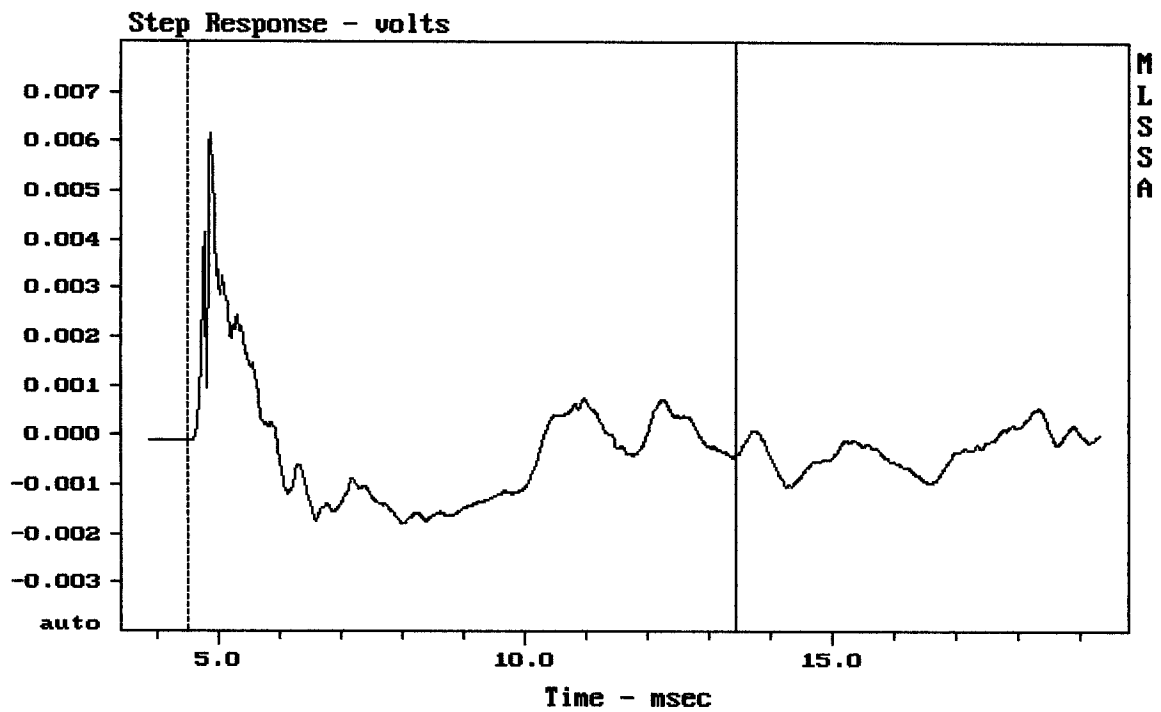
GAMMA 10 + DT150

MLSSA: Frequency Domain



Level (100:16502 Hz) = 94.45 dB SPL/watt (8 ohms, @1.50 meters) (0.33 oct)

GAMMA 10 + DT150



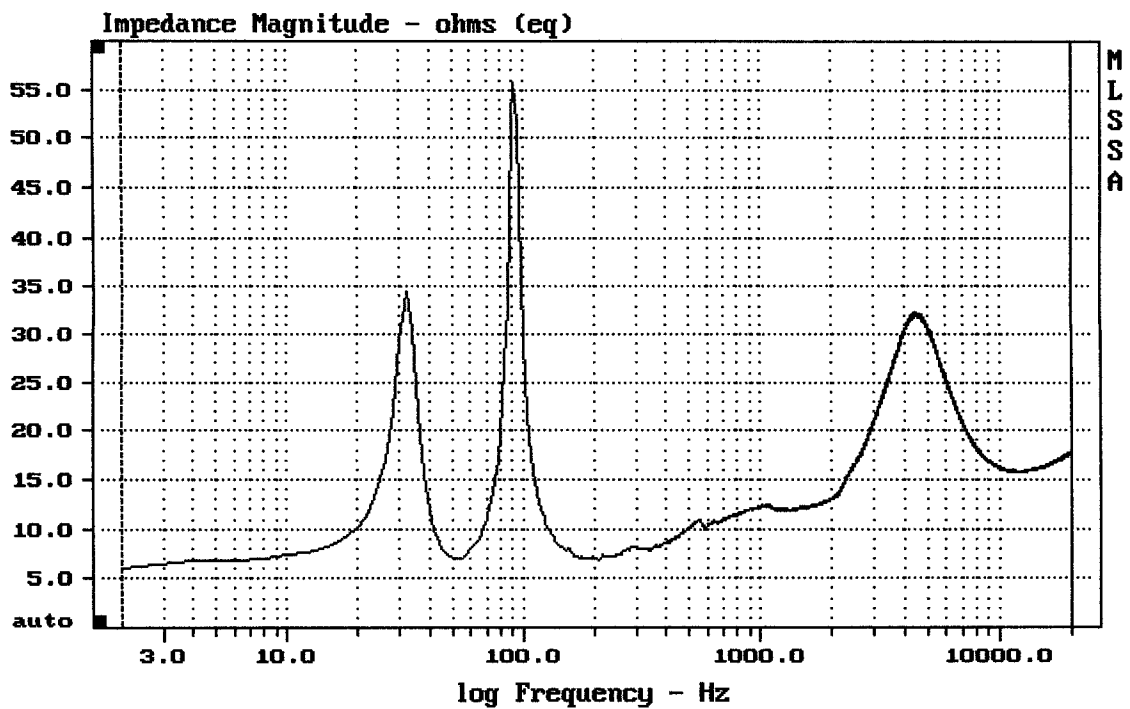

---

mean: -0.0002919, rms: 0.001341, std: 0.001309, max: 0.006175, min: -0.001796

---

GAMMA 10 + DT150

MLSSA: Time Domain

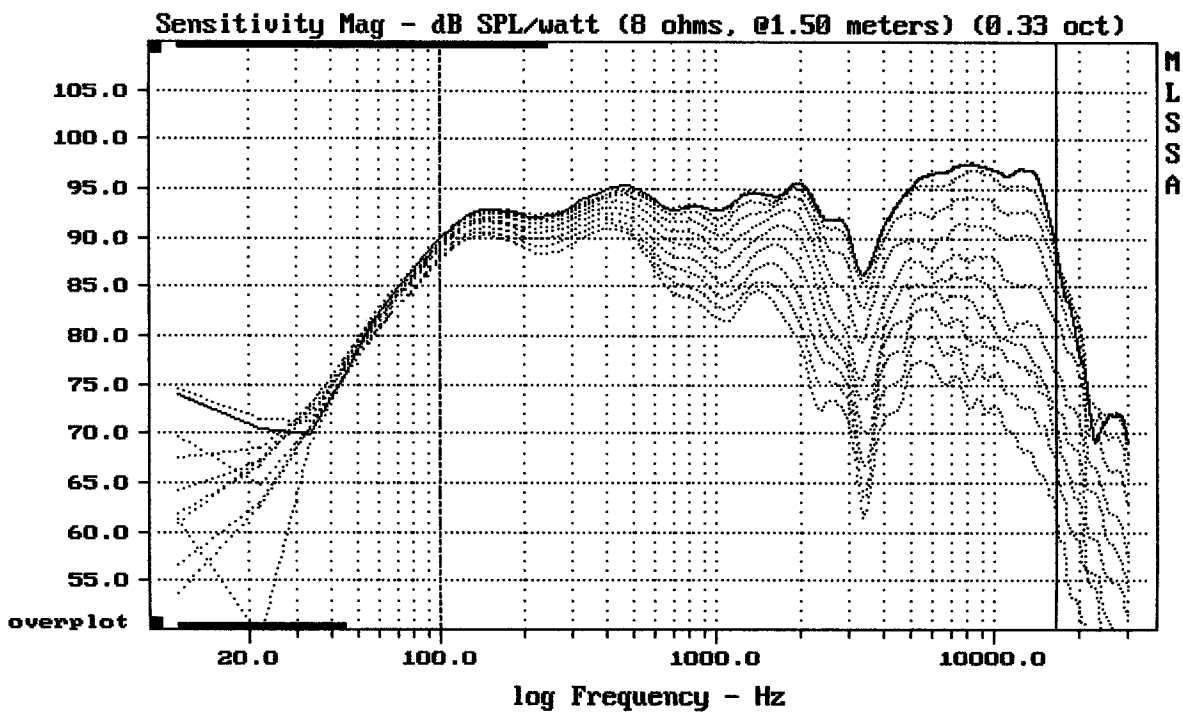



---

mean: 18.3, rms: 19.01, std: 5.127, max: 55.76, min: 6.07

---

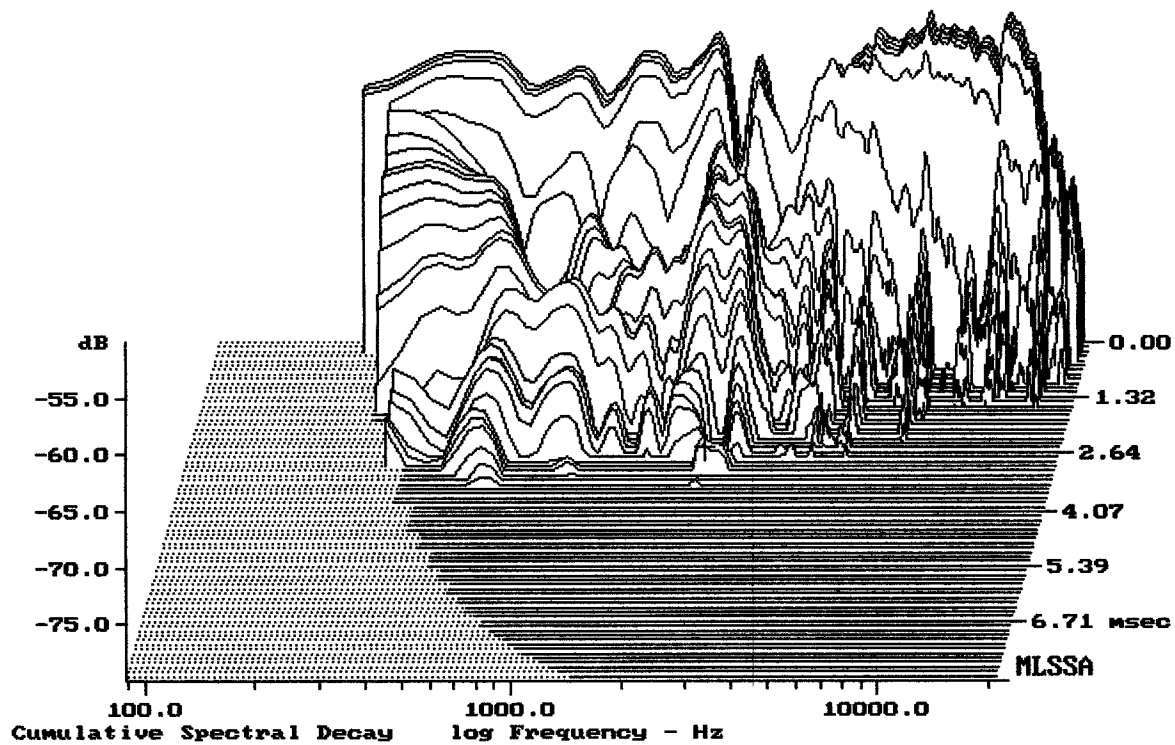
GAMMA 10 + DT150



Overlay Compare: dev= +20/-7.7, std= 6.1, avg= -23

GAMMA 10 + DT150

MLSSA: Frequency Domain



-77.93 dB, 2353 Hz (53), 3.000 msec (29)