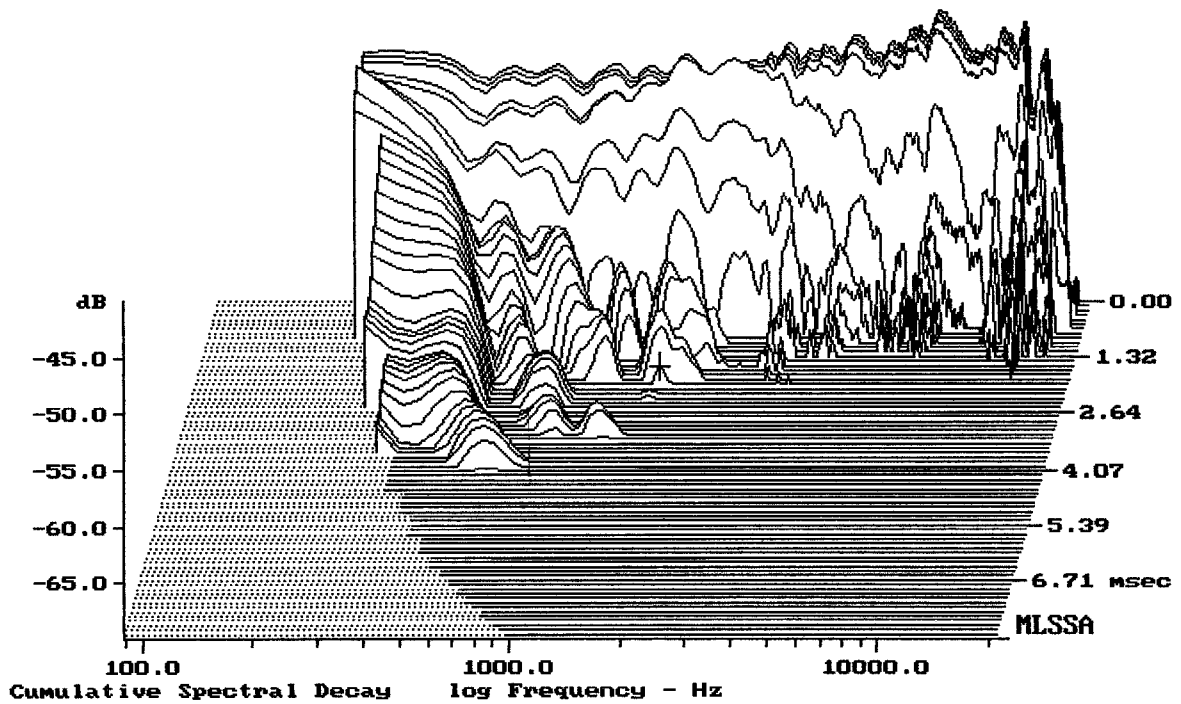


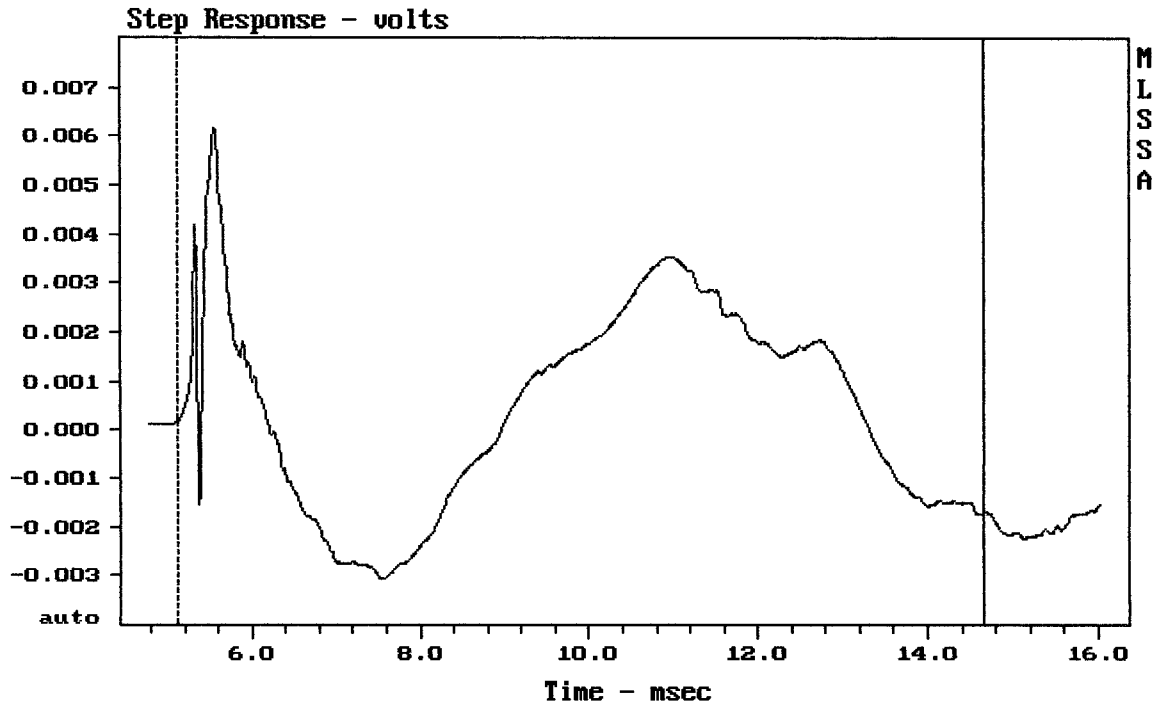
mean: 99.87, rms: 100.09, std: 1.79, max: 103.50, min: 90.11

ART 715-A

MLSSA: Frequency Domain



-68.40 dB, 1642 Hz (37), 1.980 msec (19)



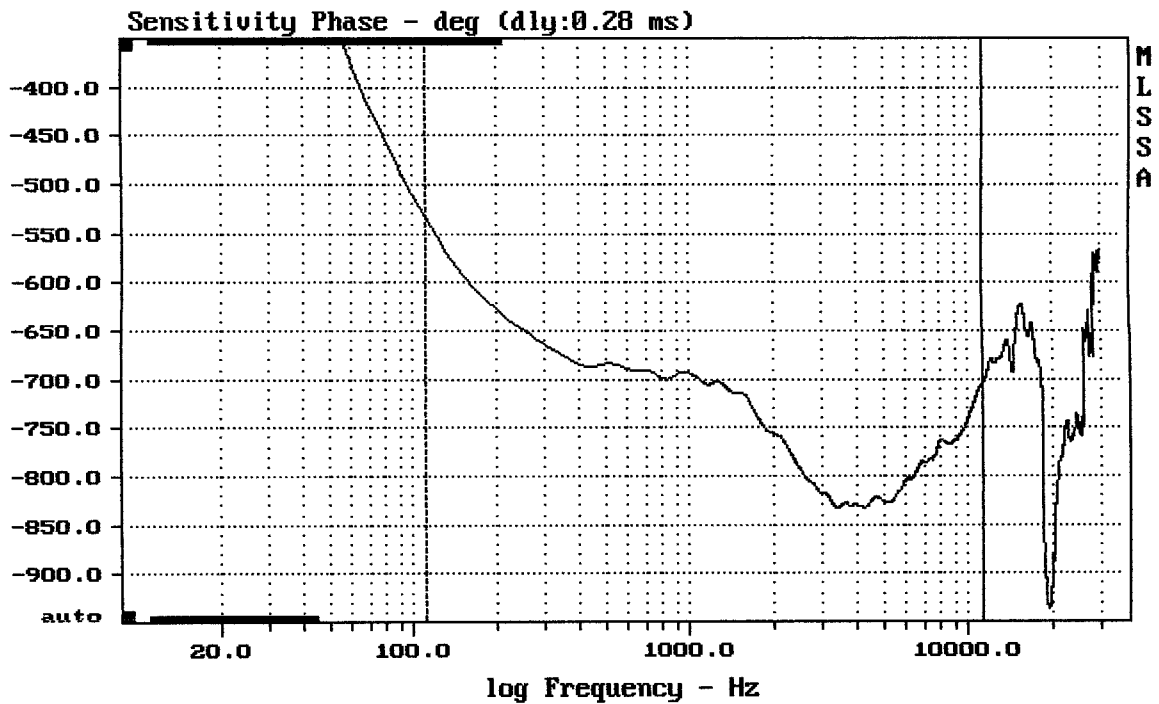
---

mean: 0.0004076, rms: 0.002093, std: 0.002053, max: 0.00615, min: -0.003068

---

ART 715-A

MLSSA: Time Domain

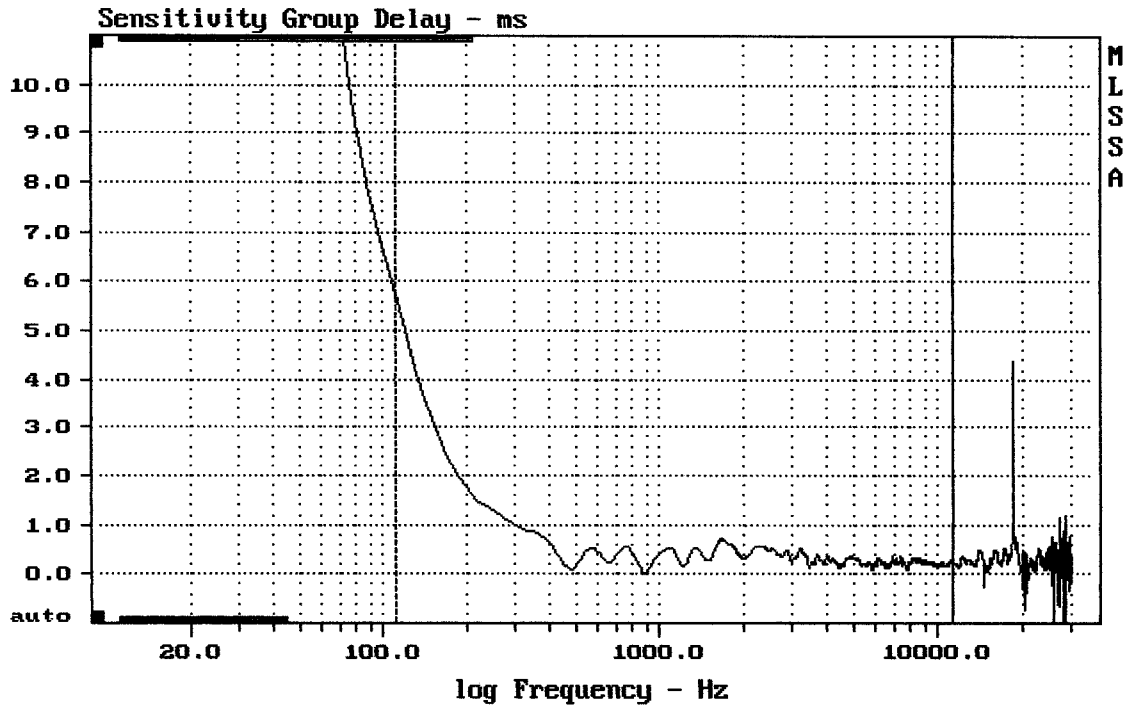


---

mean: -769.2, rms: 770.7, std: 48.84, max: -533.5, min: -833.9

---

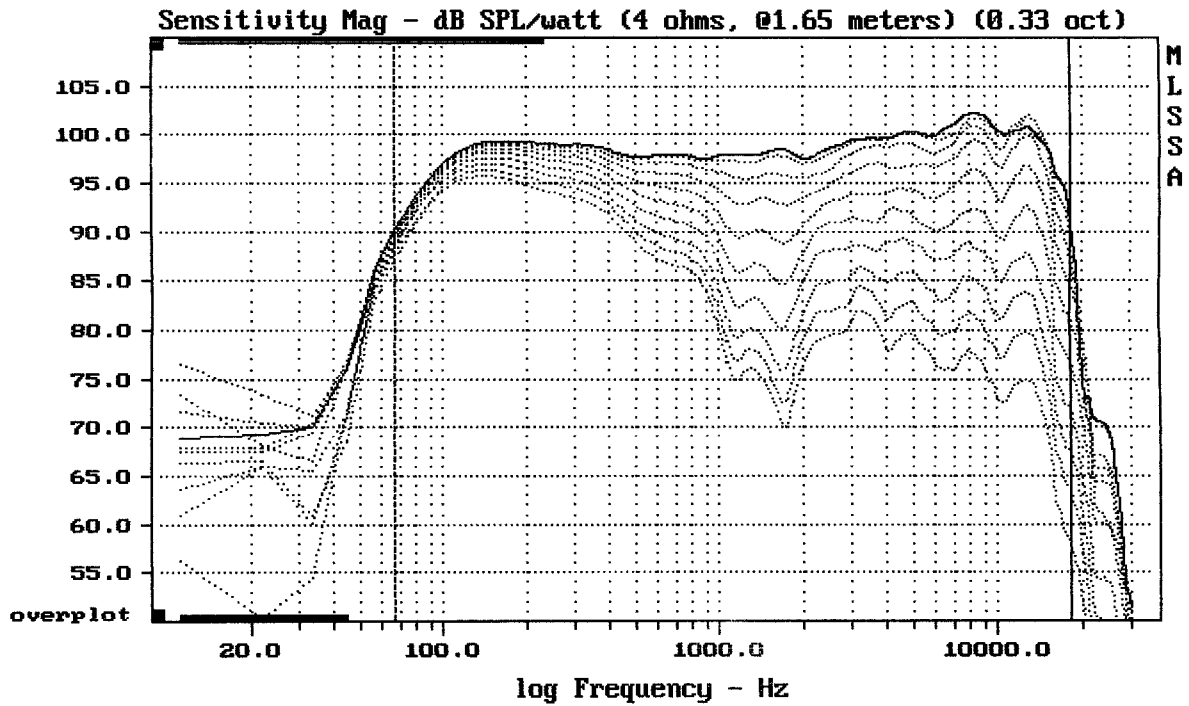
ART 715-A



mean: 0.3286, rms: 0.476, std: 0.3443, max: 5.744, min: 0.01855

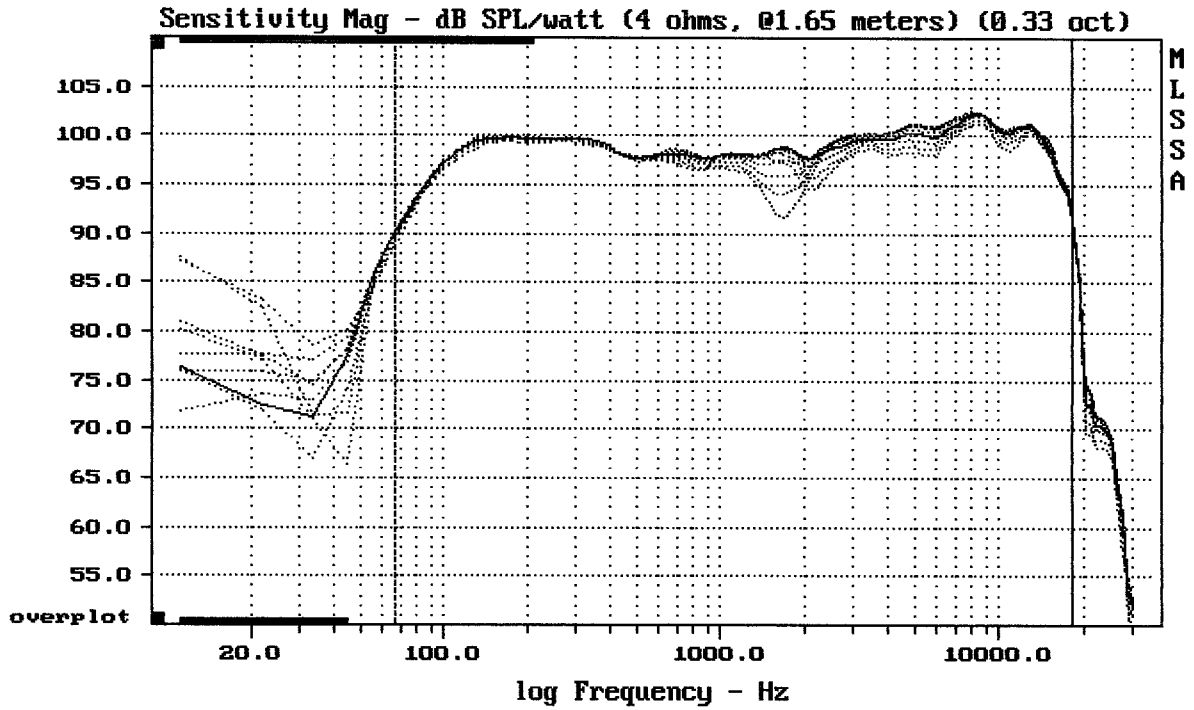
ART 715-A

MLSSA: Frequency Domain



Overlay Compare: dev= +22/-10, std= 5.8, avg= -25

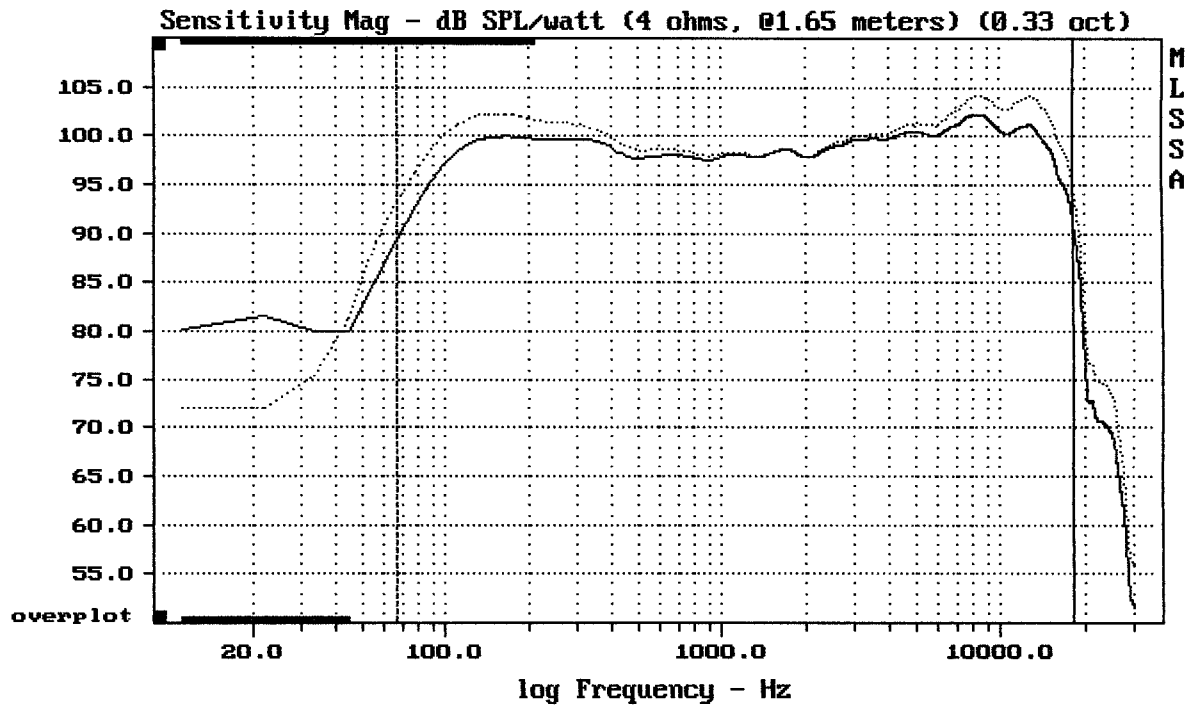
ART 715-A



Overlay Compare: dev= +1.2/-6.9, std= 1.2, avg= -0.19

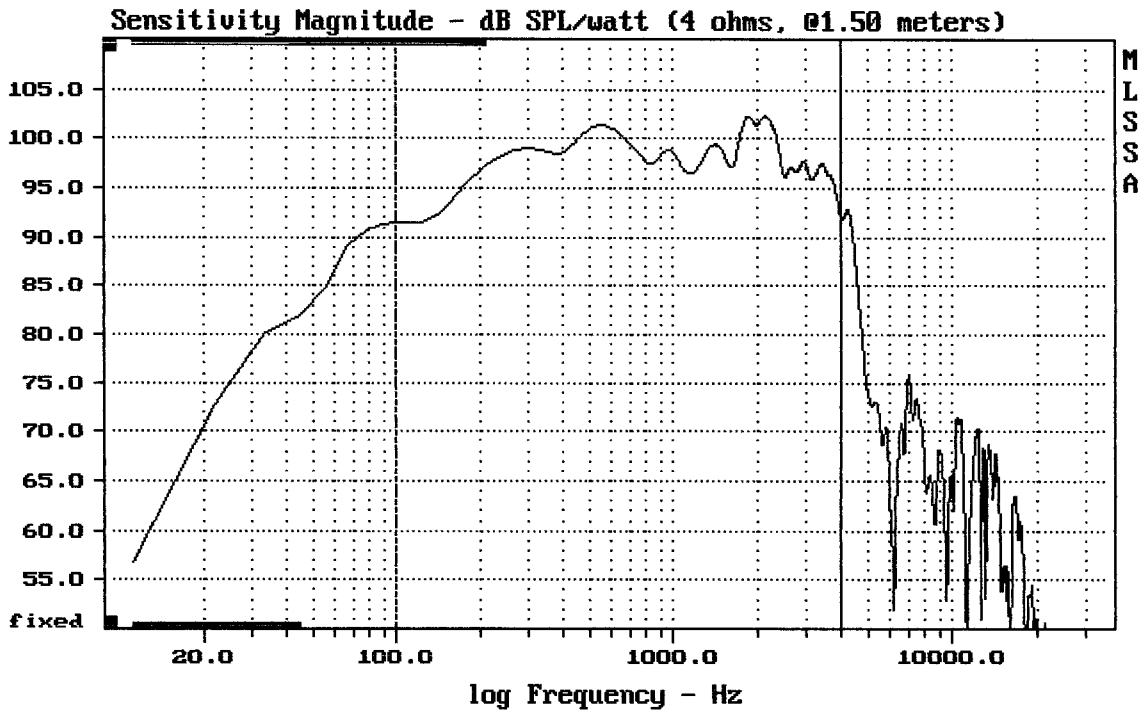
ART 715-A

MLSSA: Frequency Domain



Overlay Compare: dev= +1.9/-2, std= 1.2, avg= 2

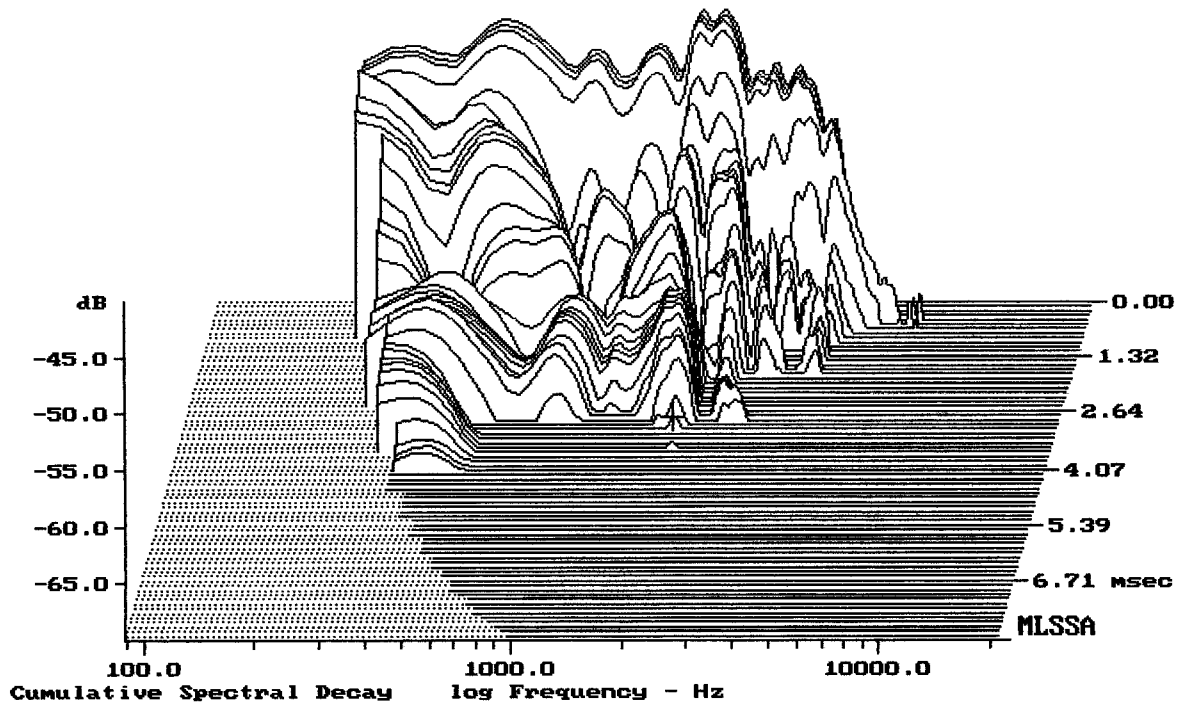
ART 715-A



Level (100:4006 Hz) = 98.40 dB SPL/watt (4 ohms, @1.50 meters)

15" FROM ART715A

MLSSA: Frequency Domain



-68.85 dB, 1909 Hz (43), 3.080 msec (29)

Measured Data

QC Limits

Line	Parameter	Value	Units
1	RMSE-free	0.42	Ohms
2	Fs	44.74	Hz
3	Re	3.55	Ohms[dc]
4	Res	95.54	Ohms
5	Qms	6.31	
6	Qes	0.23	
7	Qts	0.23	
8	L1	0.59	mH
9	L2	1.15	mH
10	R2	4.56	Ohms
11	RMSE-load	0.39	Ohms
12	Vas(Sd)	203.05	liters
13	Mms	64.03	grams
14	Cms	198	$\mu$ M/Newton
15	B1	16.50	Tesla-M
16	SPLref(Sd)	100.7	dB[Re]
17	Rub-index	0.01	

Method: Mass-loaded (80.00 grams)

Area (Sd): 855.30 sq cm

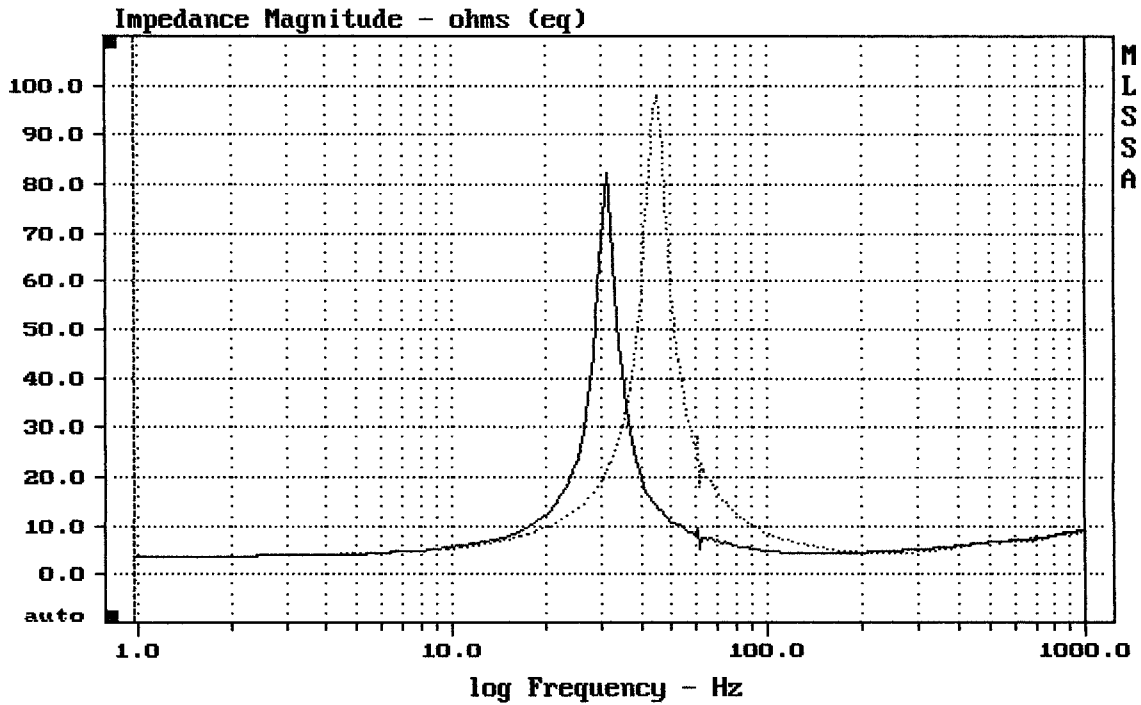
DCR mode: Measure (-0.16 ohms)

QC file: CLOSED

Analysis successful. Shift in Fs = -30.3% (-20% to -50% is recommended).

15" FROM ART715A

MLSSA: Parameters



mean: 8.219, rms: 12.03, std: 8.79, max: 97.97, min: 3.722

MLSSA: Frequency Domain