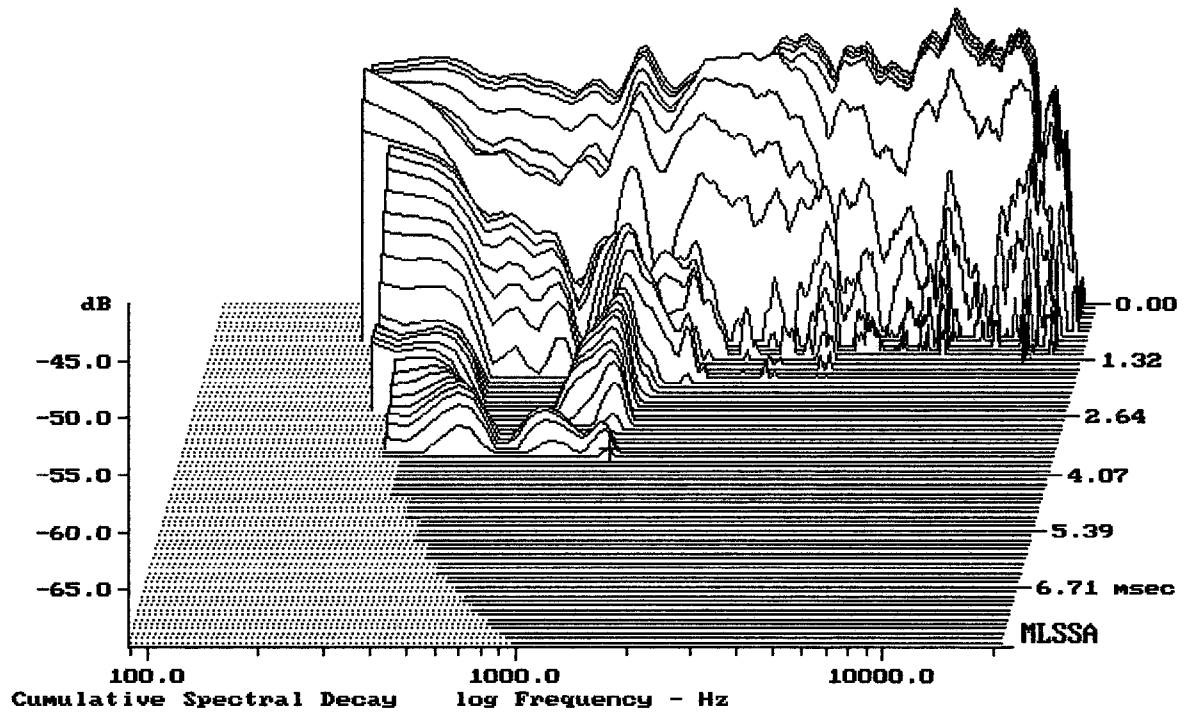


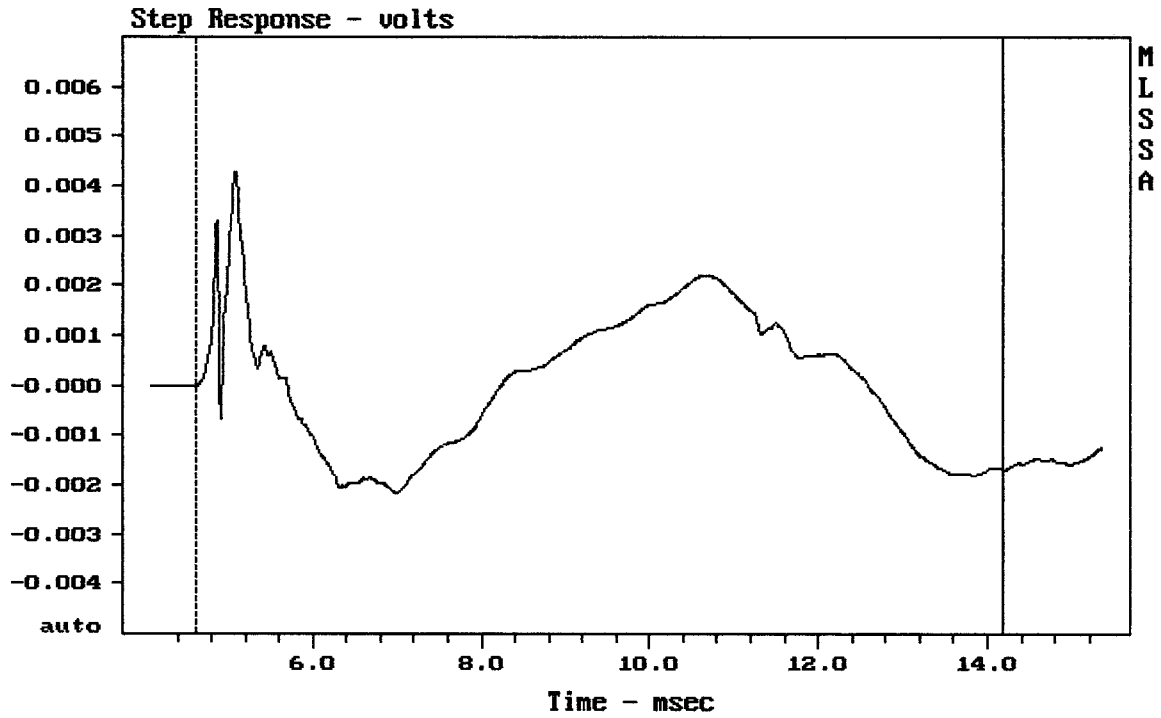
mean: 101.30, rms: 101.64, std: 2.16, max: 105.54, min: 92.27

ART712-A

MLSSA: Frequency Domain



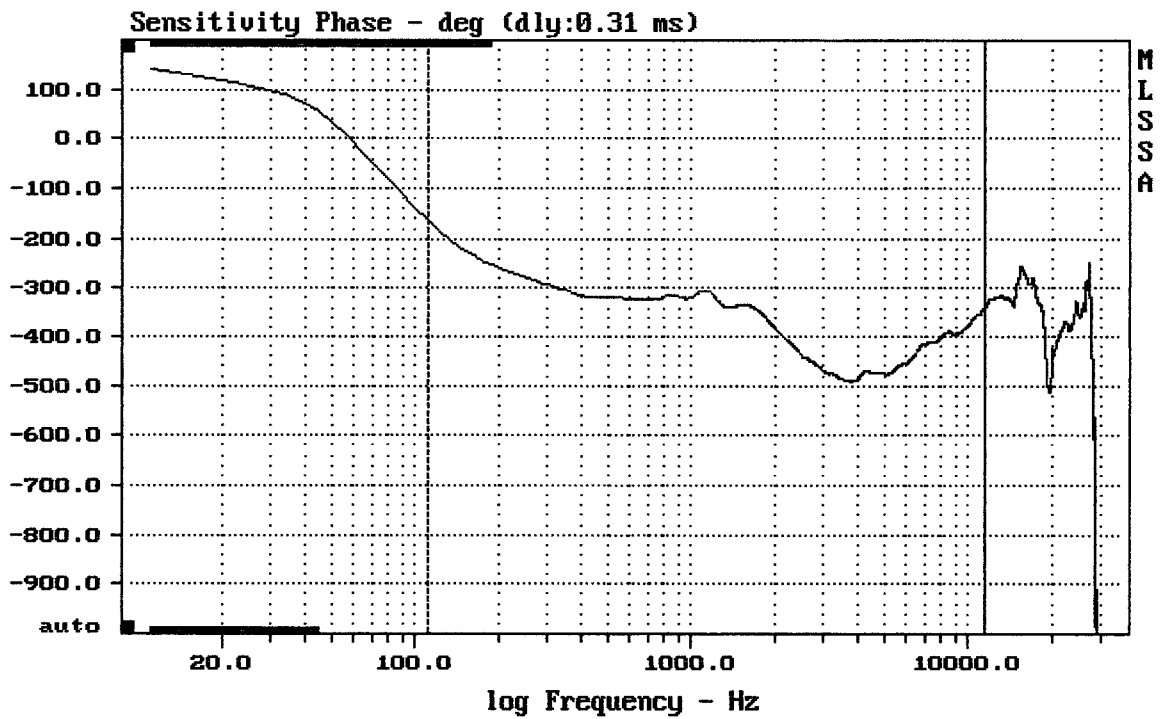
-69.24 dB, 1287 Hz (29), 3.630 msec (34)



mean: 5.78e-005, rms: 0.001411, std: 0.00141, max: 0.004289, min: -0.002174

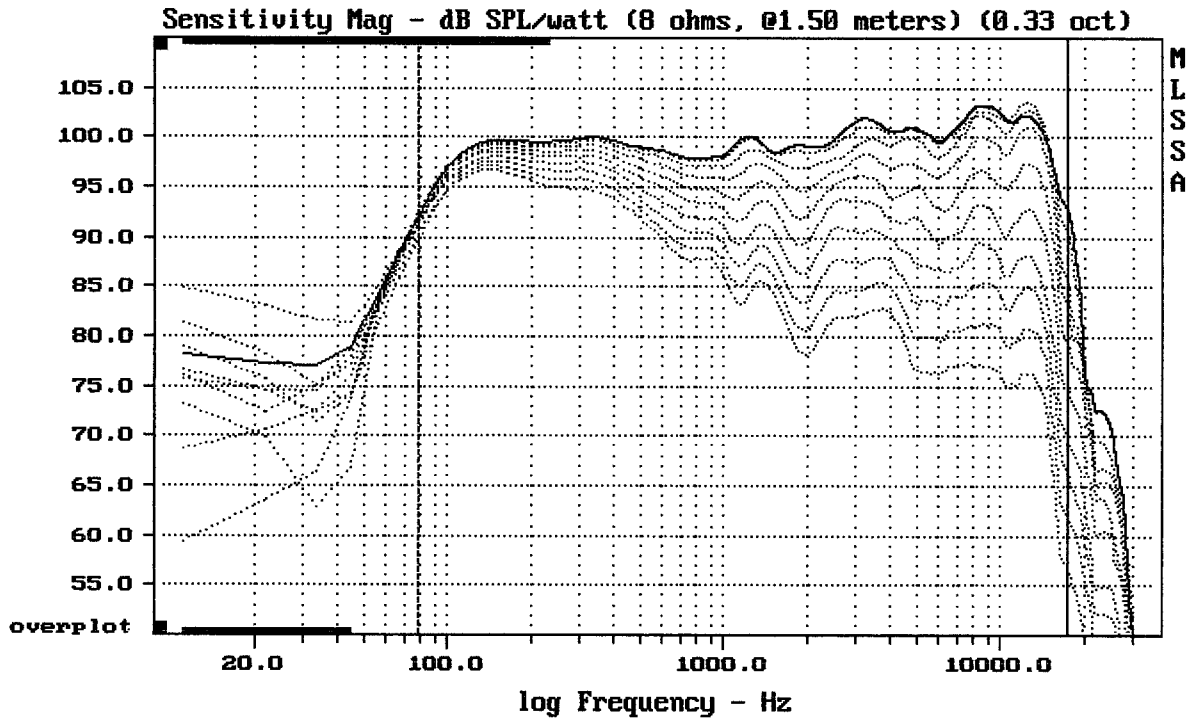
ART712-A

MLSSA: Time Domain



mean: -406, rms: 410, std: 56.64, max: -163, min: -492

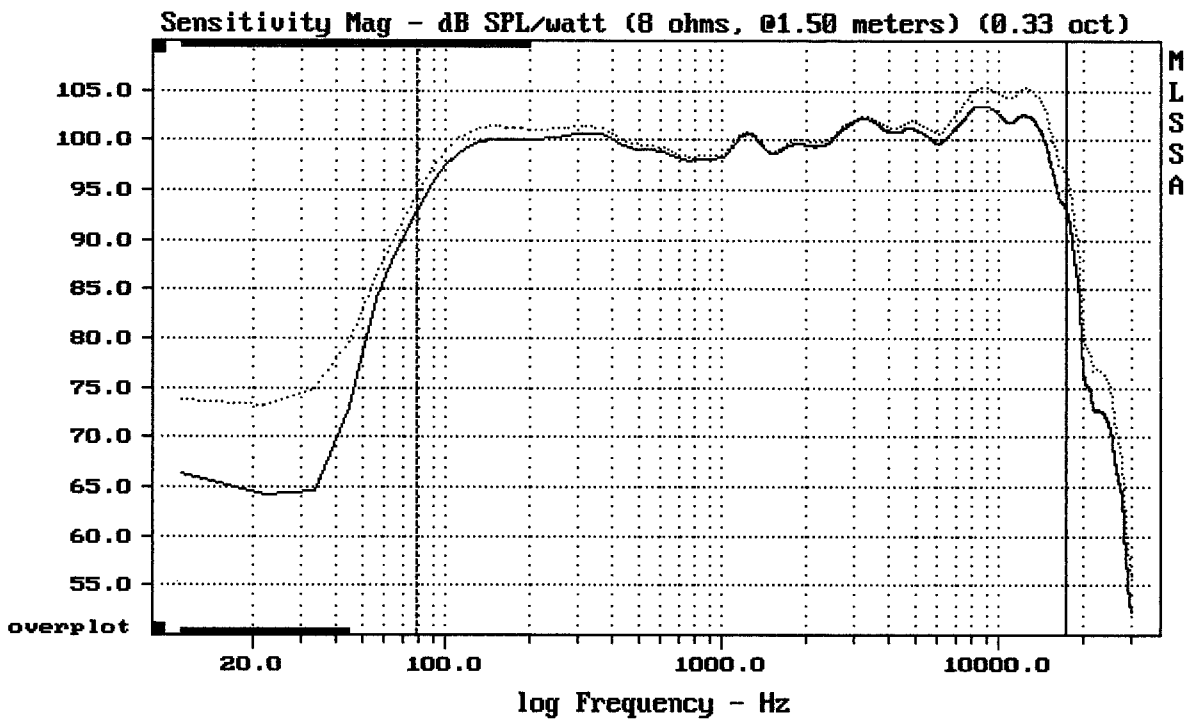
ART712-A



Overlay Compare: dev= +22/-12, std= 6.3, avg= -24

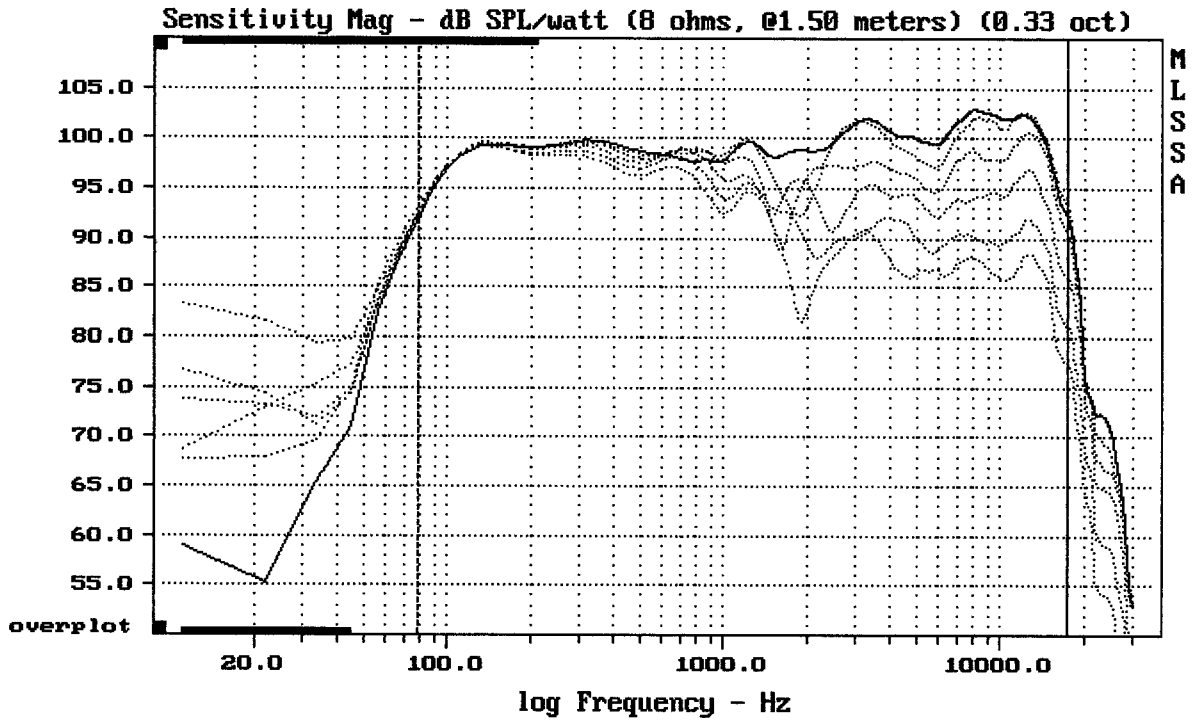
ART712-A

MLSSA: Frequency Domain



Overlay Compare: dev= +1.7/-1.6, std= 1.1, avg= 1.8

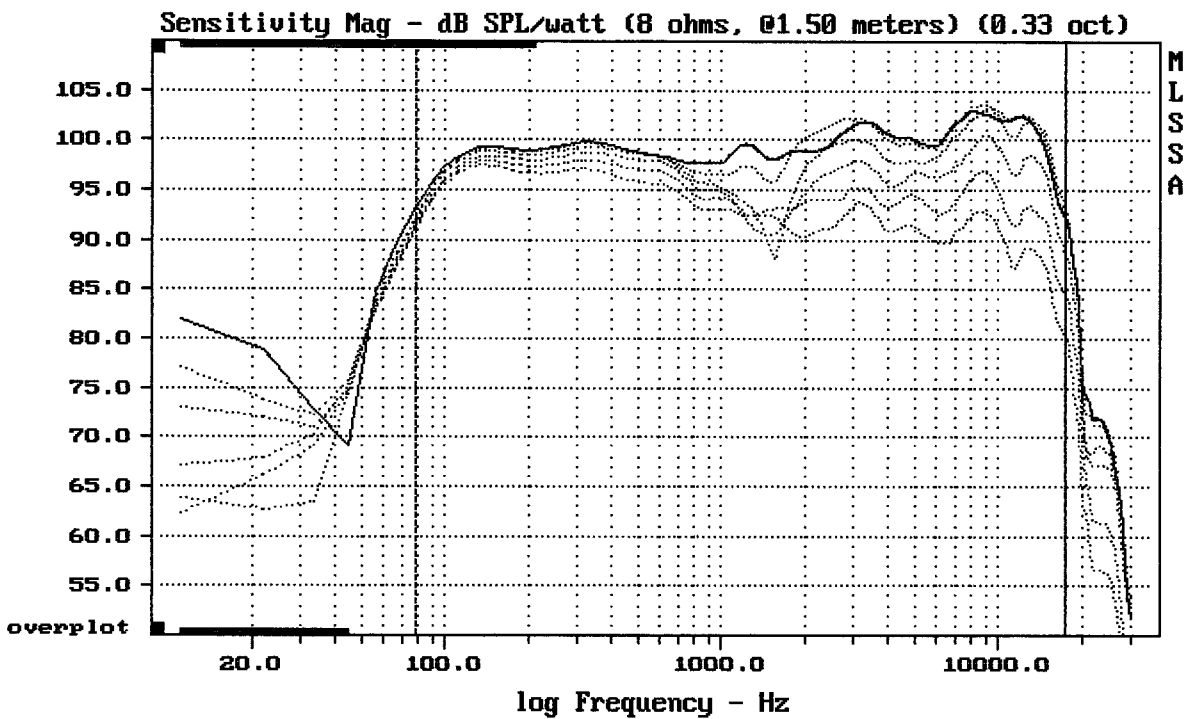
ART712-A



Overlay Compare: dev= +14/-4, std= 3.4, avg= -13

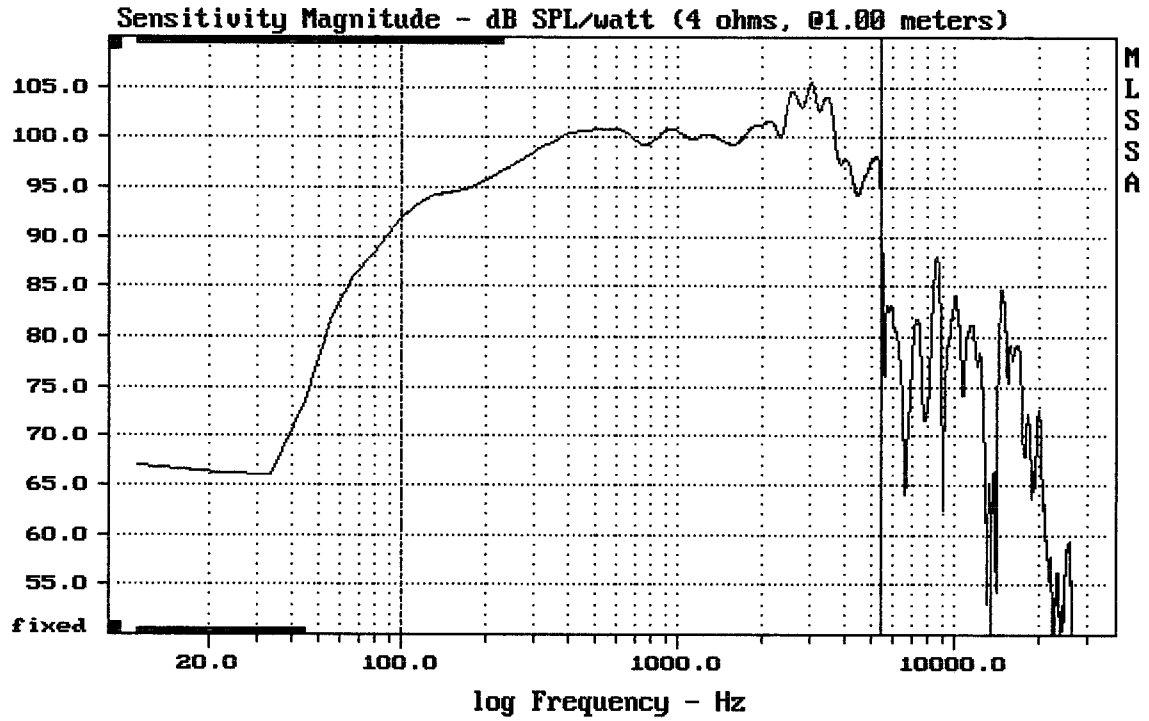
ART712-A

MLSSA: Frequency Domain



Overlay Compare: dev= +8.7/-4.6, std= 2.6, avg= -10

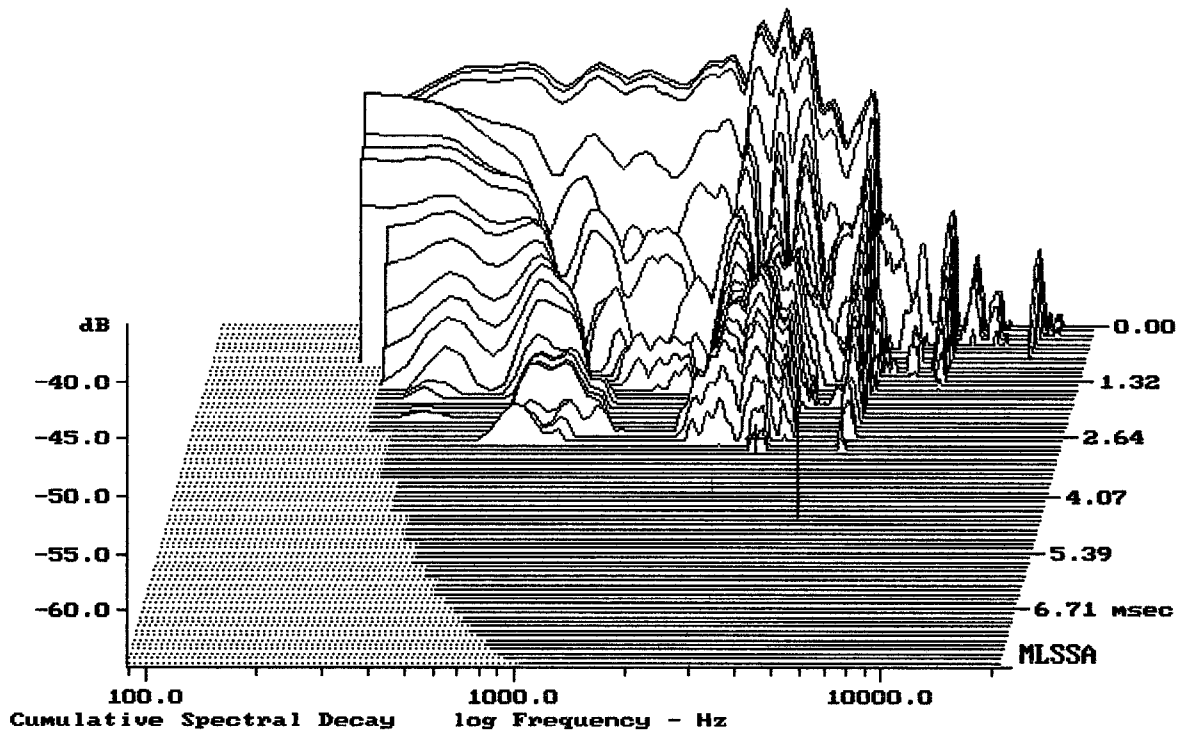
ART712-A



Level (100:5404 Hz) = 99.76 dB SPL/watt (4 ohms, @1.00 meters)

12" ART712-A

MLSSA: Frequency Domain



-63.95 dB, 3107 Hz (70), 2.970 msec (28)

MLSSA SPO 4.0D #960903-3057-3075

Measured Data

QC Limits

Line	Parameter	Value	Units
1	RMSE-free	0.57	Ohms
2	Fs	66.45	Hz
3	Re	2.47	Ohms[dc]
4	Res	68.76	Ohms
5	Qms	8.60	
6	Qes	0.31	
7	Qts	0.30	
8	L1	0.27	mH
9	L2	0.56	mH
10	R2	2.16	Ohms
11	RMSE-load	0.78	Ohms
12	Vas(Sd)	66.92	liters
13	Mms	33.93	grams
14	Cms	169	μ M/Newton
15	Bl	10.64	Tesla-M
16	SPLref(Sd)	99.9	dB[Re]
17	Rub-index	0.08	

Method: Mass-loaded (40.00 grams)

Area (Sd): 530.93 sq cm

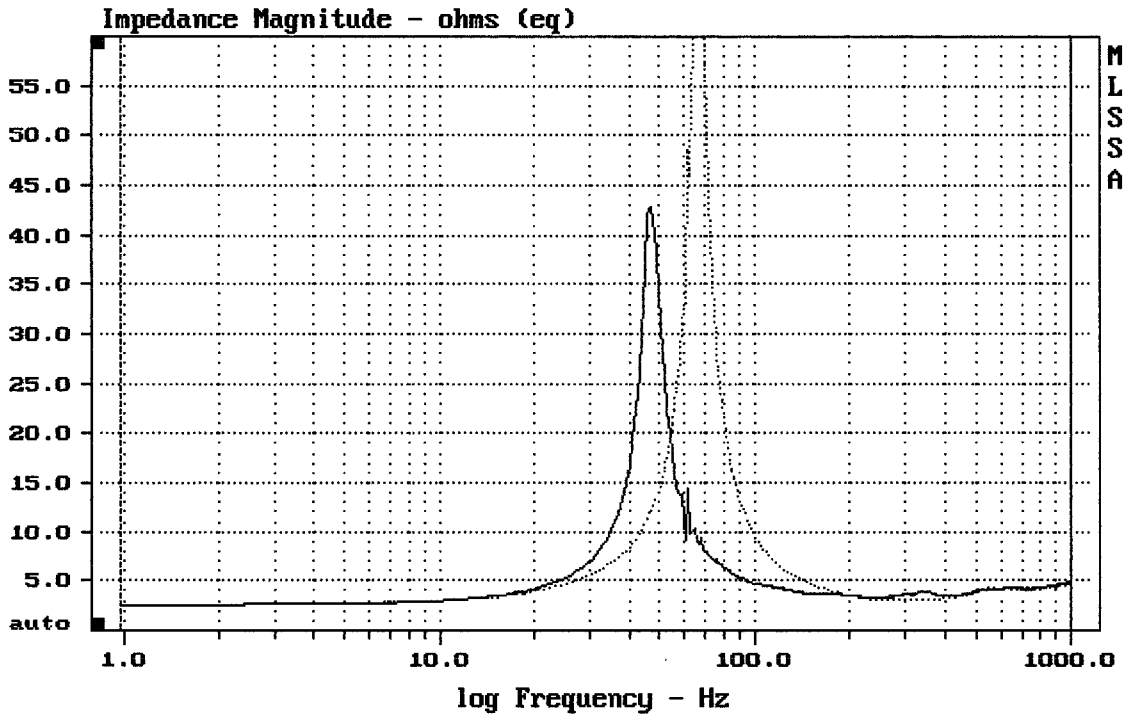
DCR mode: Measure (-0.14 ohms)

QC file: CLOSED

Analysis successful. Shift in Fs = -29.3% (-20% to -50% is recommended).

12" FROM ART712-A

MLSSA: Parameters



mean: 5.302, rms: 8.545, std: 6.701, max: 75.49, min: 2.598

MLSSA: Frequency Domain