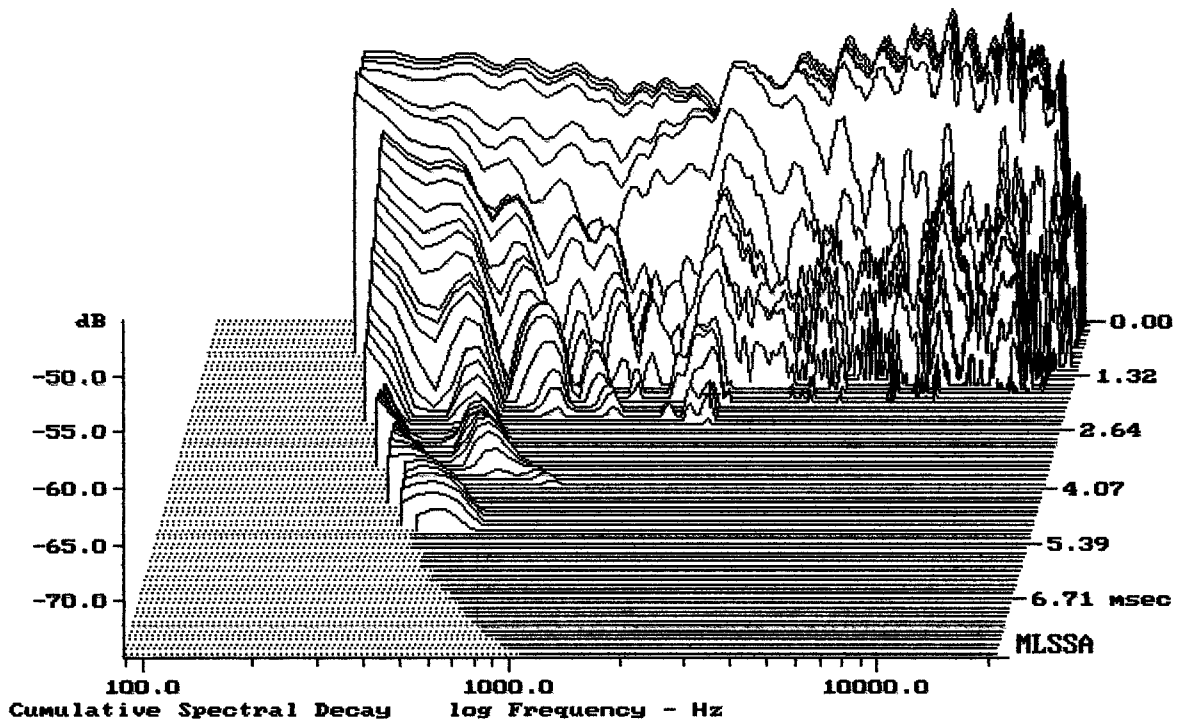


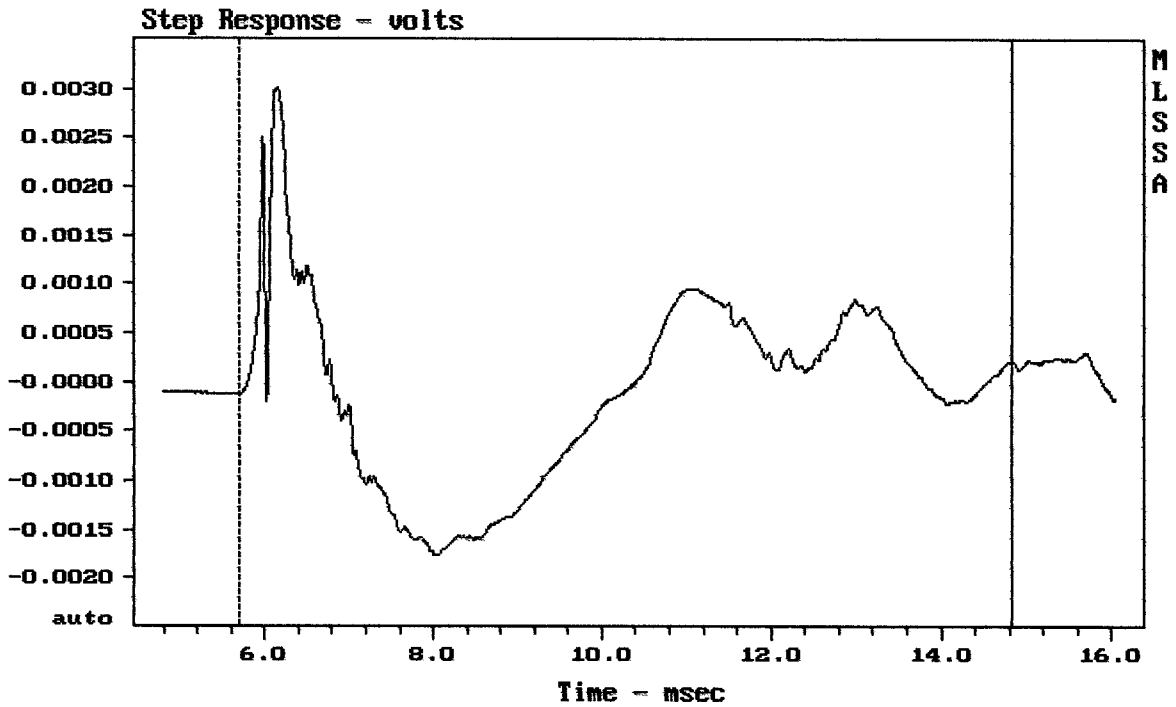
Level (67:19509 Hz) = 99.36 dB SPL/watt (8 ohms, @1.90 meters) (0.33 oct)

QSC HPR152F

MLSSA: Frequency Domain



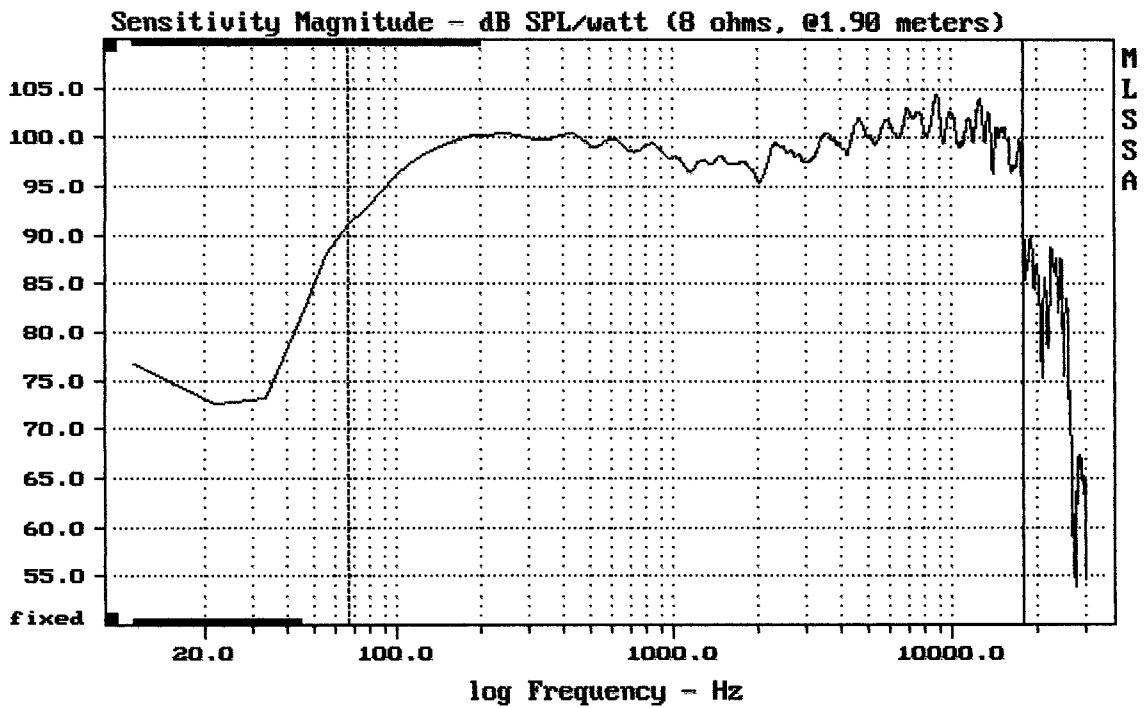
-72.69 dB, 2308 Hz (52), 2.420 msec (23)



mean: $-9.708e-005$, rms: 0.0009429, std: 0.0009379, max: 0.003019, min: -0.0017

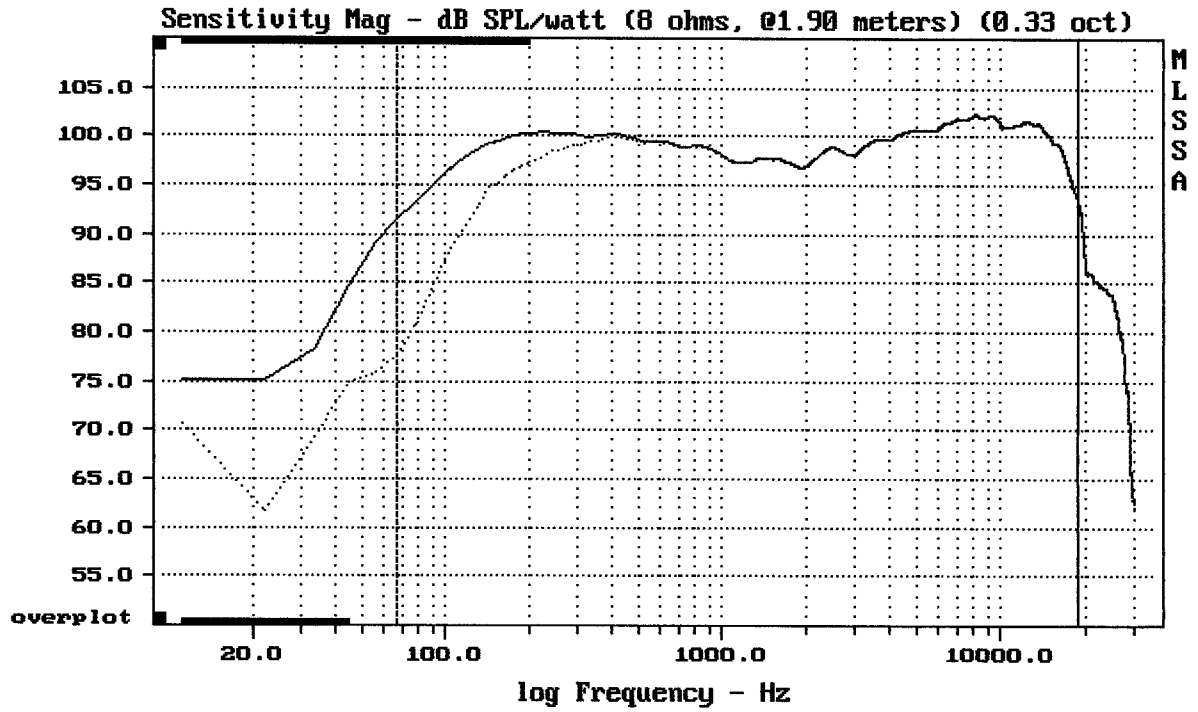
QSC HPR152F

MLSSA: Time Domain



mean: 100.27, rms: 100.48, std: 1.73, max: 104.34, min: 91.20

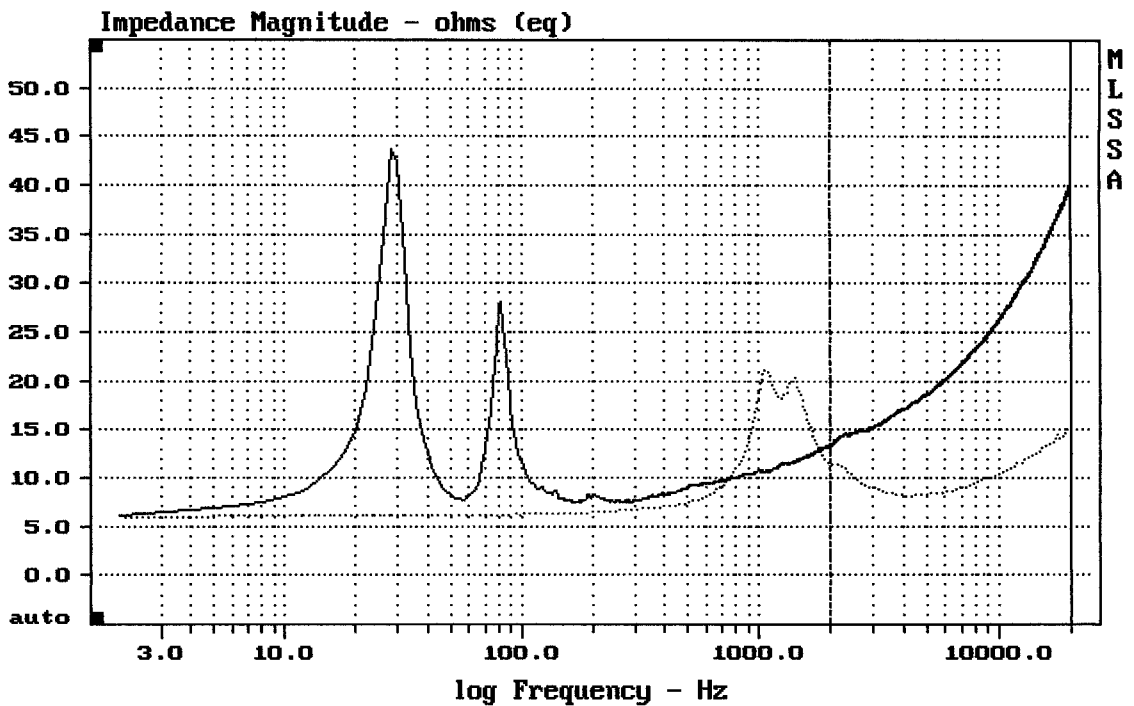
QSC HPR152F



mean: 99.96, rms: 100.17, std: 1.72, max: 102.23, min: 77.64

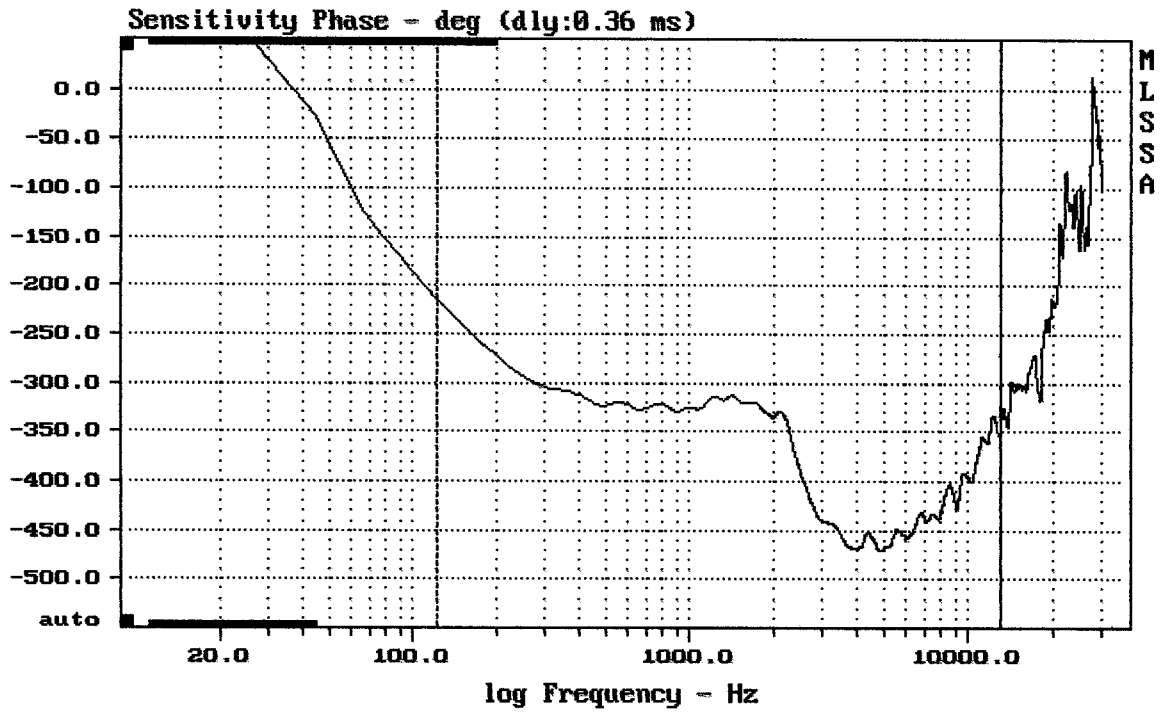
QSC HPR152F

MLSSA: Frequency Domain



mean: 11.2, rms: 11.41, std: 2.172, max: 15.19, min: 8.029

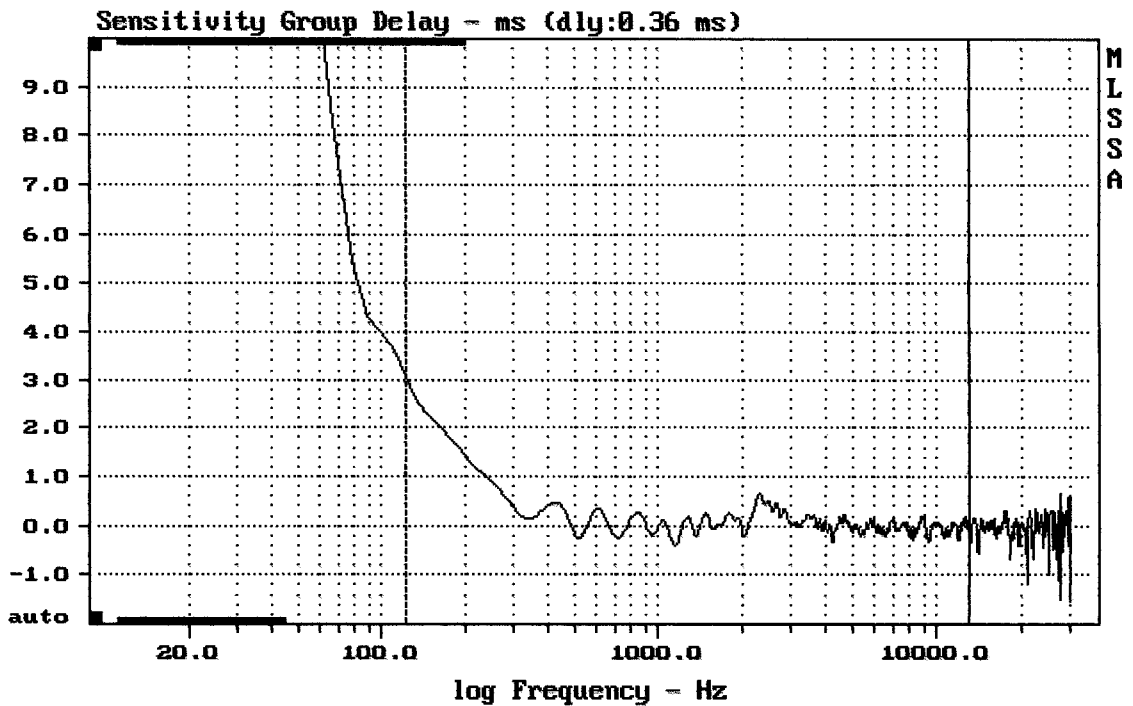
QSC HPR152F



mean: -398.4, rms: 401.8, std: 52.28, max: -214, min: -471

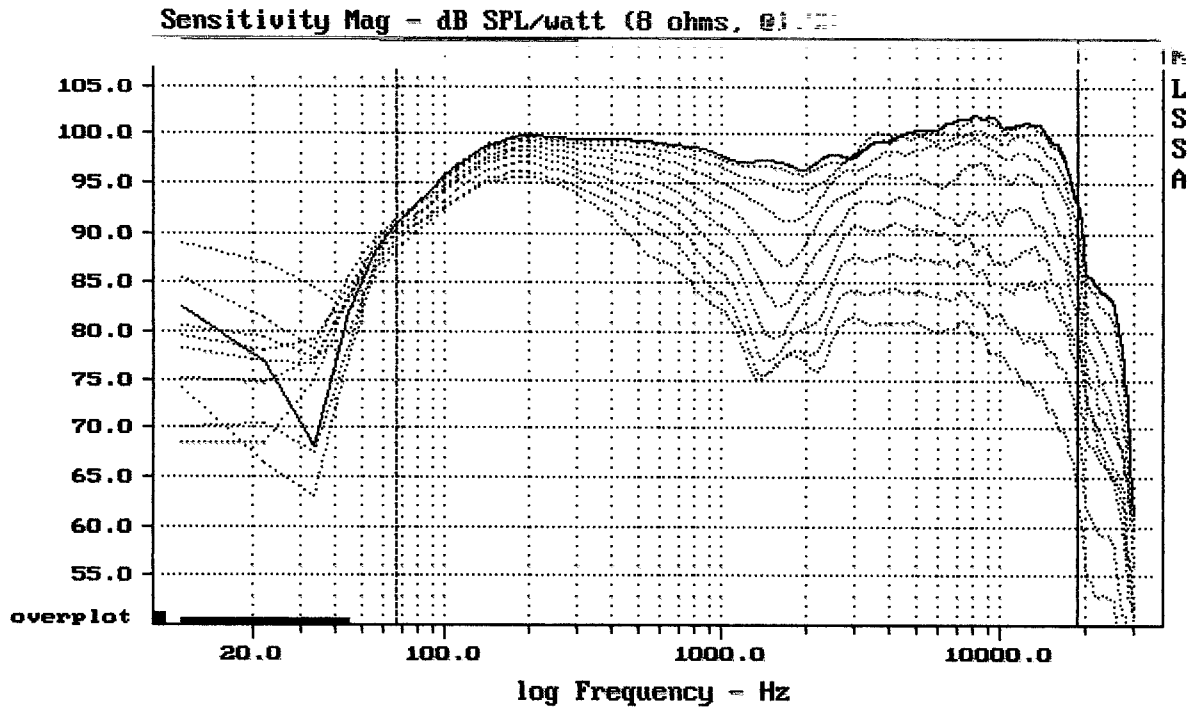
QSC HPR152F

MLSSA: Frequency Domain



mean: 0.0278, rms: 0.2562, std: 0.2547, max: 3.078, min: -0.4025

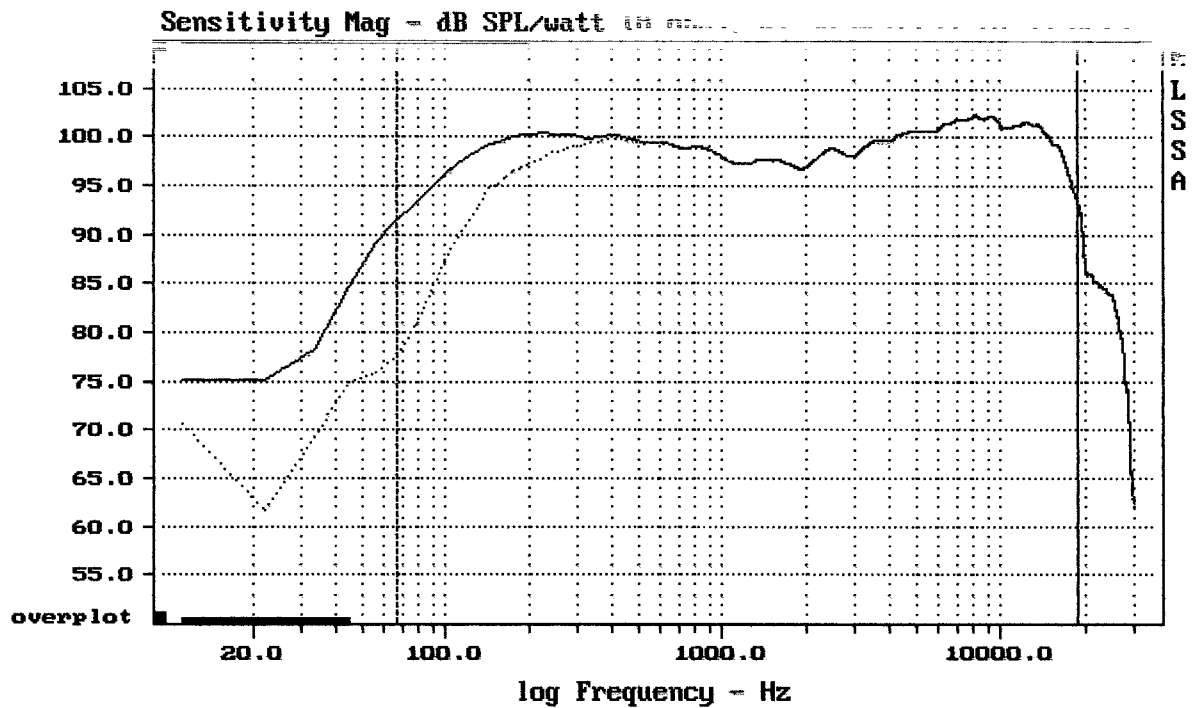
QSC HPR152F



Overlay Compare: dev= +20/-7.8, std= 4.8, avg= -23

QSC HPR152F

MLSSA: Frequency Domain



mean: 99.96, rms: 100.17, std: 1.72, max: 102.23, min: 77.64