

MLSSA SPO 4.0D #960903-3057-3075

Measured Data			QC Limits
Line	Parameter	Value	Units
1	RMSE-free	0.59	Ohms
2	Fs	36.08	Hz
3	Re	3.37	Ohms[dc]
4	Res	67.00	Ohms
5	Qms	6.41	
6	Qes	0.32	
7	Qts	0.31	
8	L1	1.16	mH
9	L2	1.30	mH
10	R2	4.79	Ohms
11	RMSE-load	0.64	Ohms
12	Vas(Sd)	233.75	liters
13	Mms	337.17	grams
14	Cms	58	$\mu\text{M}/\text{Newton}$
15	Bl	28.26	Tesla-M
16	SPLref(Sd)	97.1	dB[Re]
17	Rub-index	0.02	

Method: Mass-loaded (360.00 grams)

Area (Sd): 1698.23 sq cm

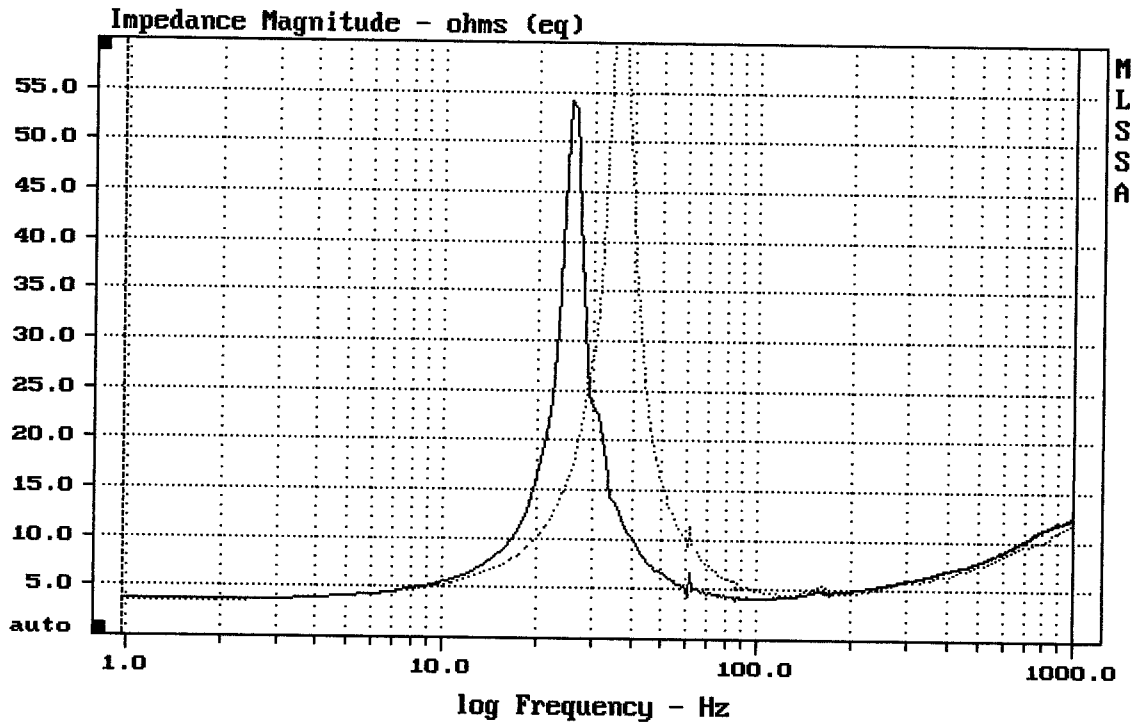
DCR mode: Measure (-0.16 ohms)

QC file: CLOSED

Analysis successful. Shift in Fs = -28.4% (-20% to -50% is recommended).

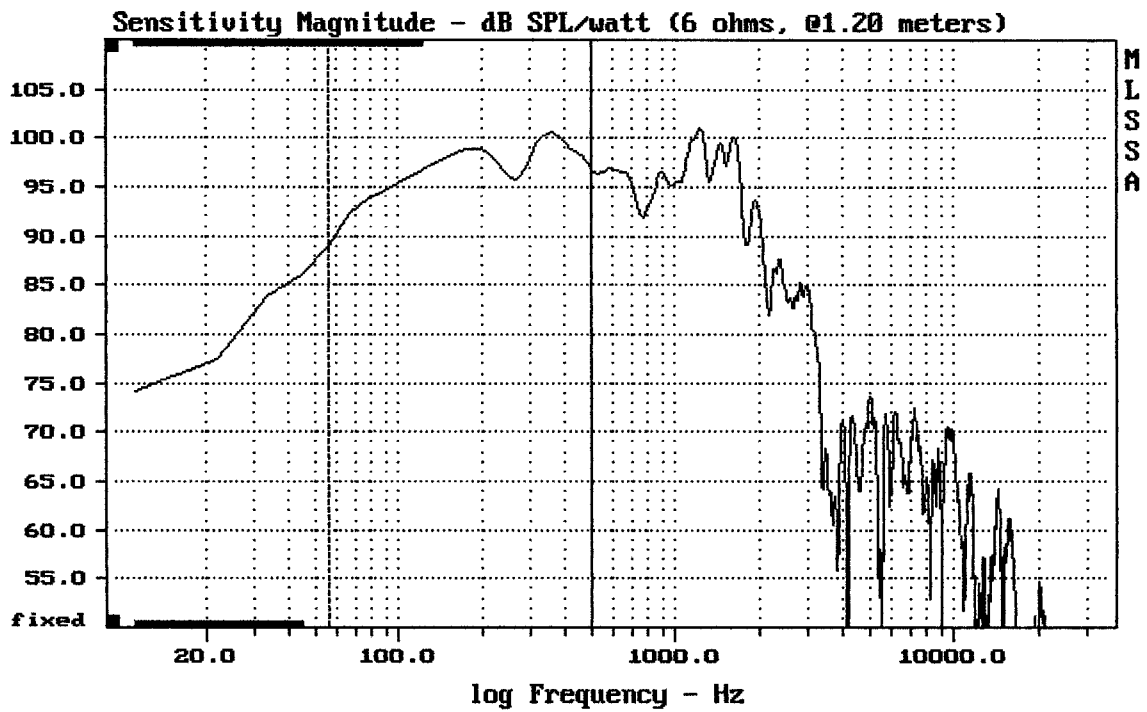
21SW152-4

MLSSA: Parameters



mean: 8.616, rms: 10.23, std: 5.52, max: 70.26, min: 3.6

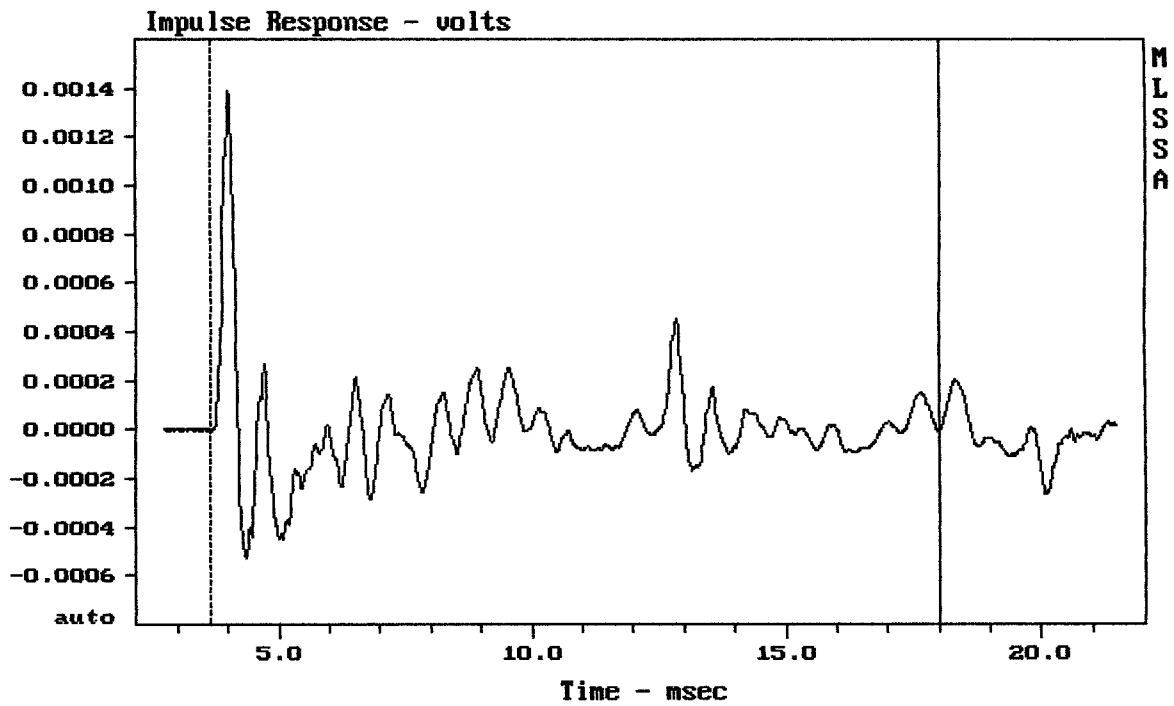
MLSSA: Frequency Domain



Level (55:499 Hz) = 97.17 dB SPL/watt (6 ohms, @1.20 meters)

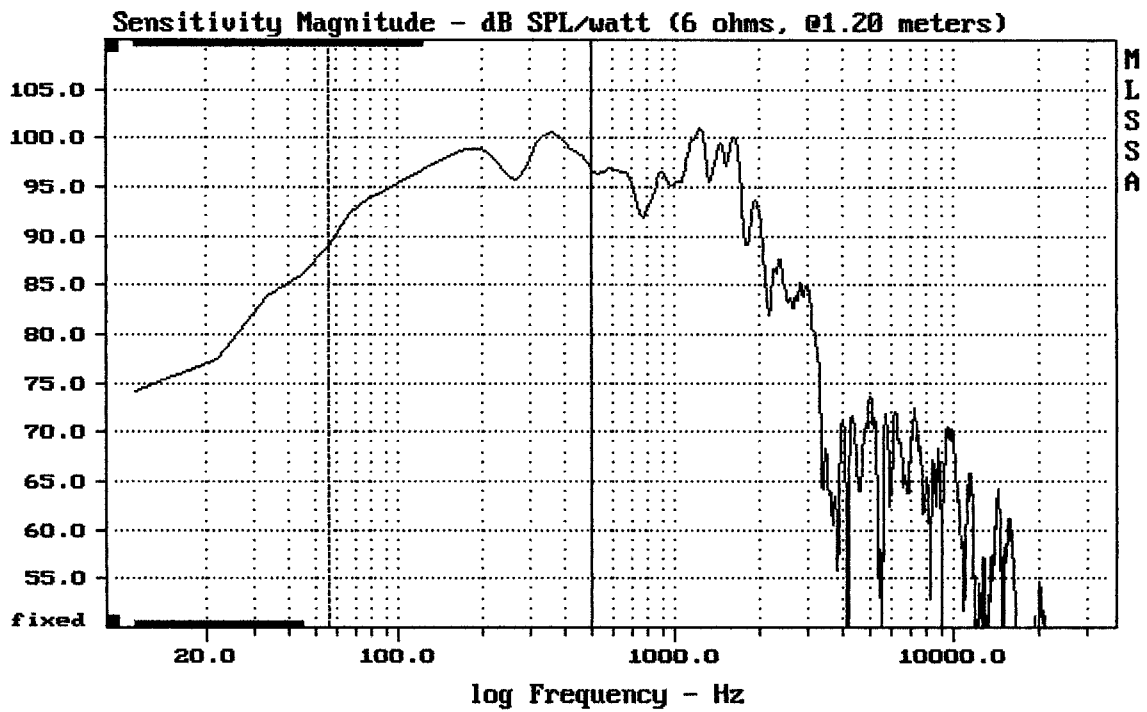
21SW152-4

MLSSA: Frequency Domain



CURSOR: $y = -1.56657e-006$ $x = 18.0290$ (1639)

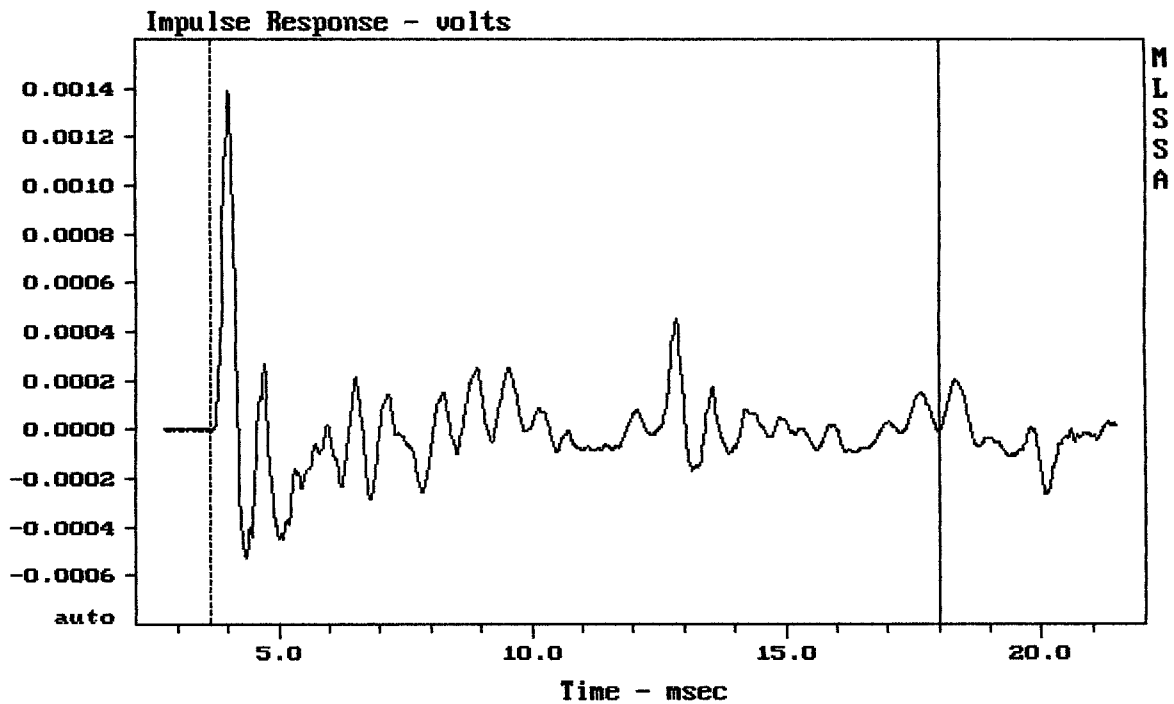
21SW152-4



Level (55:499 Hz) = 97.17 dB SPL/watt (6 ohms, @1.20 meters)

21SW152-4

MLSSA: Frequency Domain



CURSOR: $y = -1.56657e-006$ $x = 18.0290$ (1639)

21SW152-4