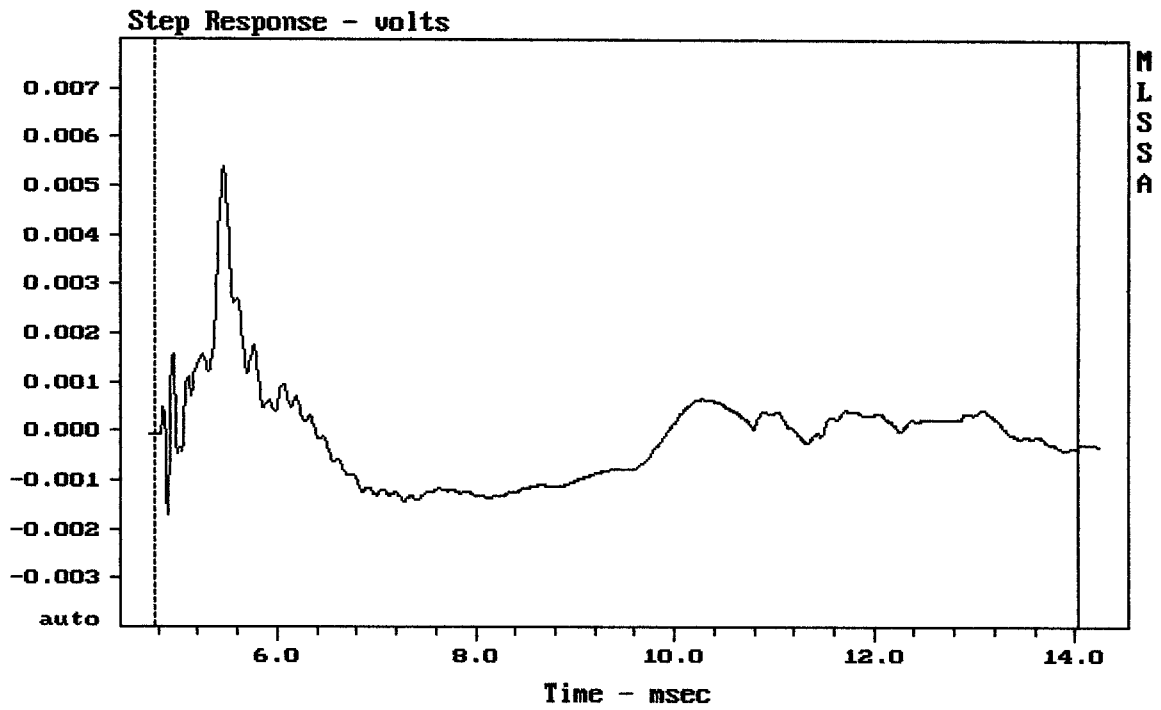


Level (100:16002 Hz) = 99.38 dB SPL/watt (8 ohms, @1.65 meters)

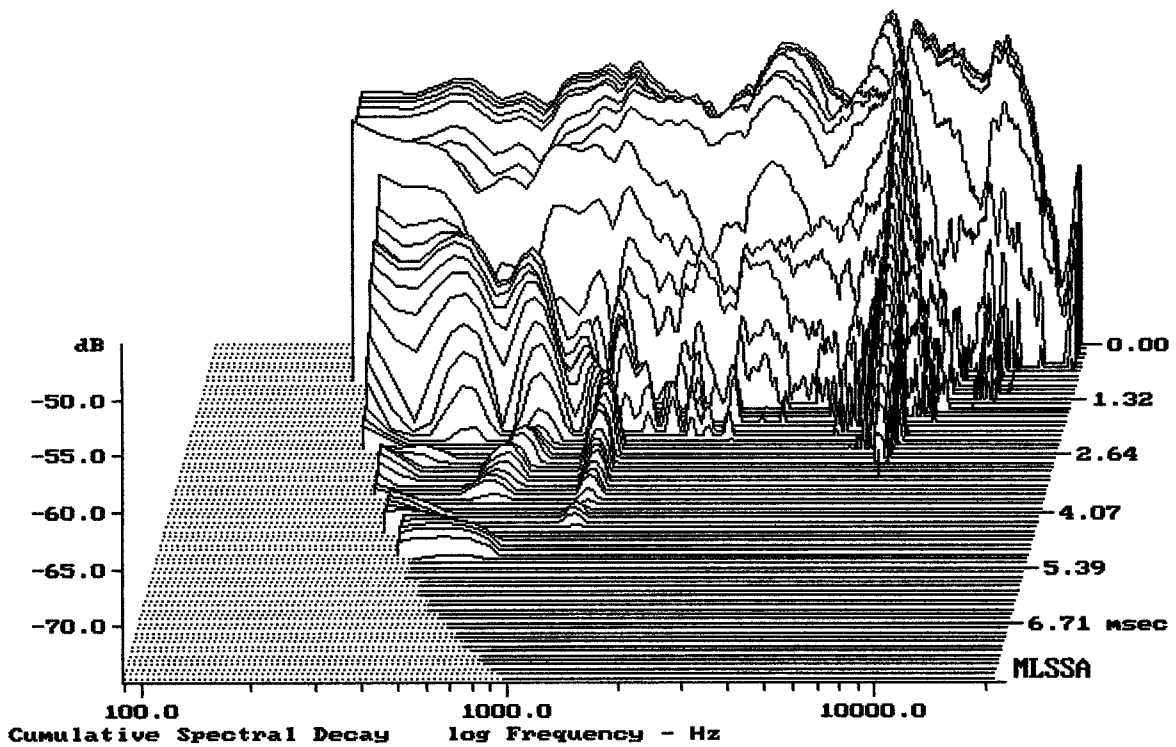
C-V PROSTAX PS-12SII



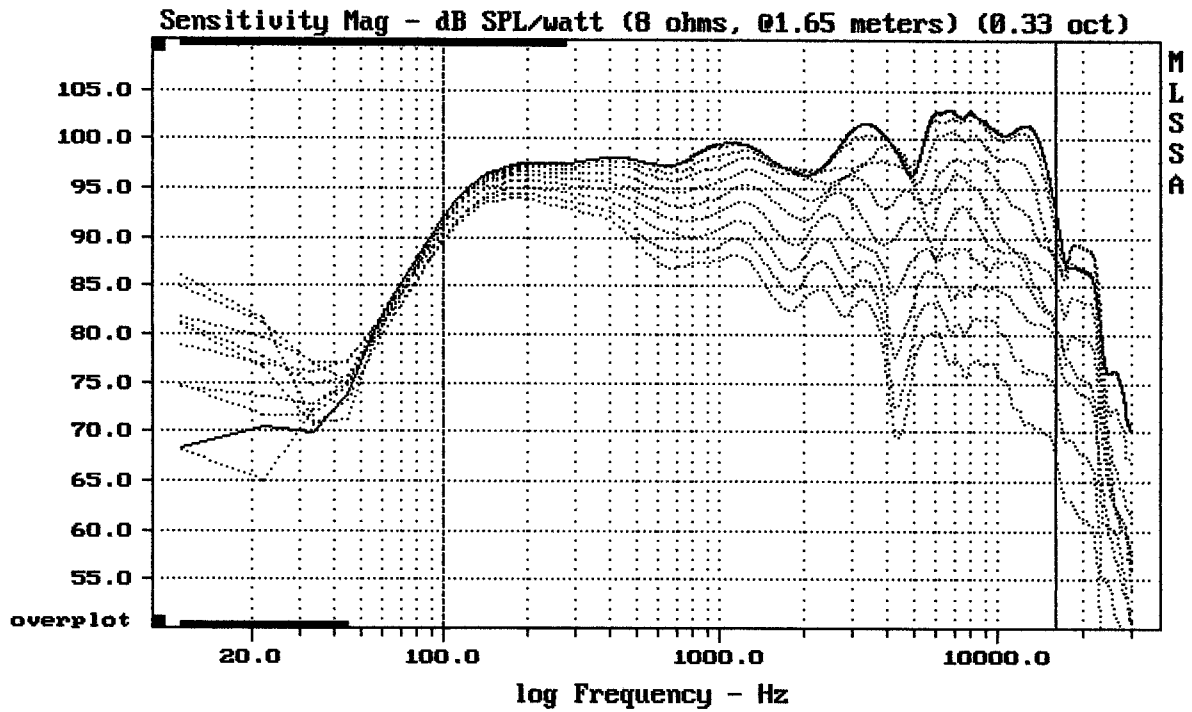
mean: -9.118×10^{-5} , rms: 0.001011, std: 0.001006, max: 0.005396, min: -0.001711

C-V PROSTAX PS-12S11

MLSSA: Time Domain



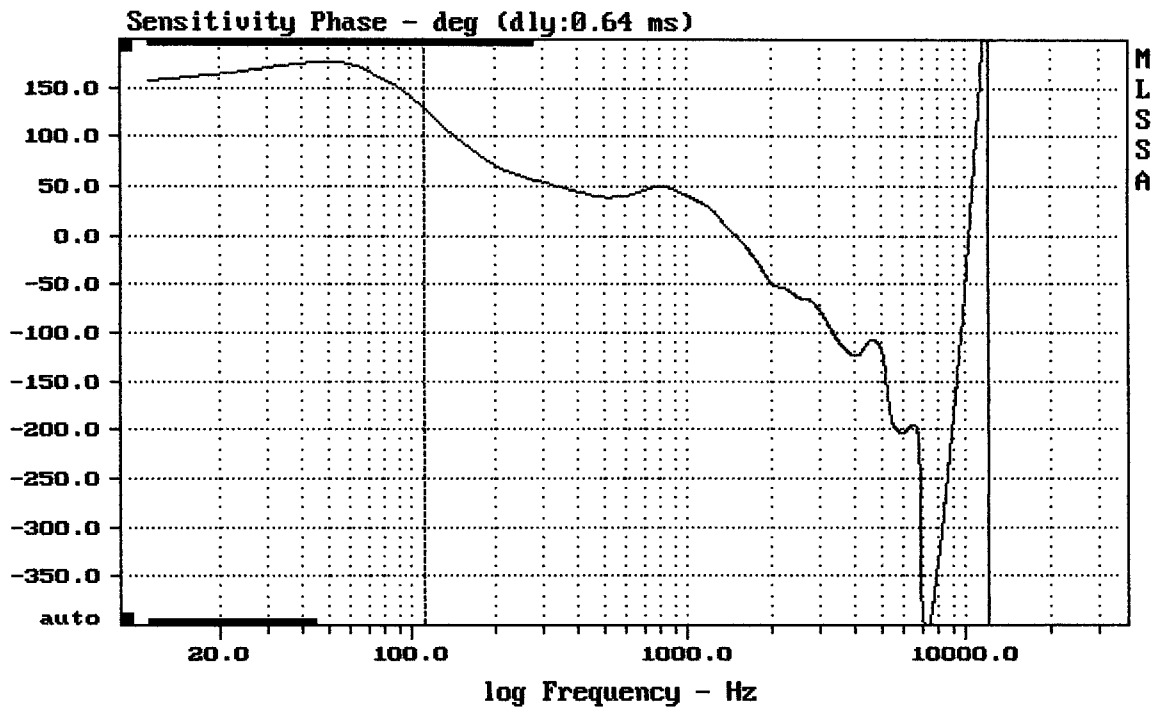
-75.00 dB, 6969 Hz (157), 2.860 msec (27)



Overlay Compare: dev= +21/-7.4, std= 6.2, avg= -23

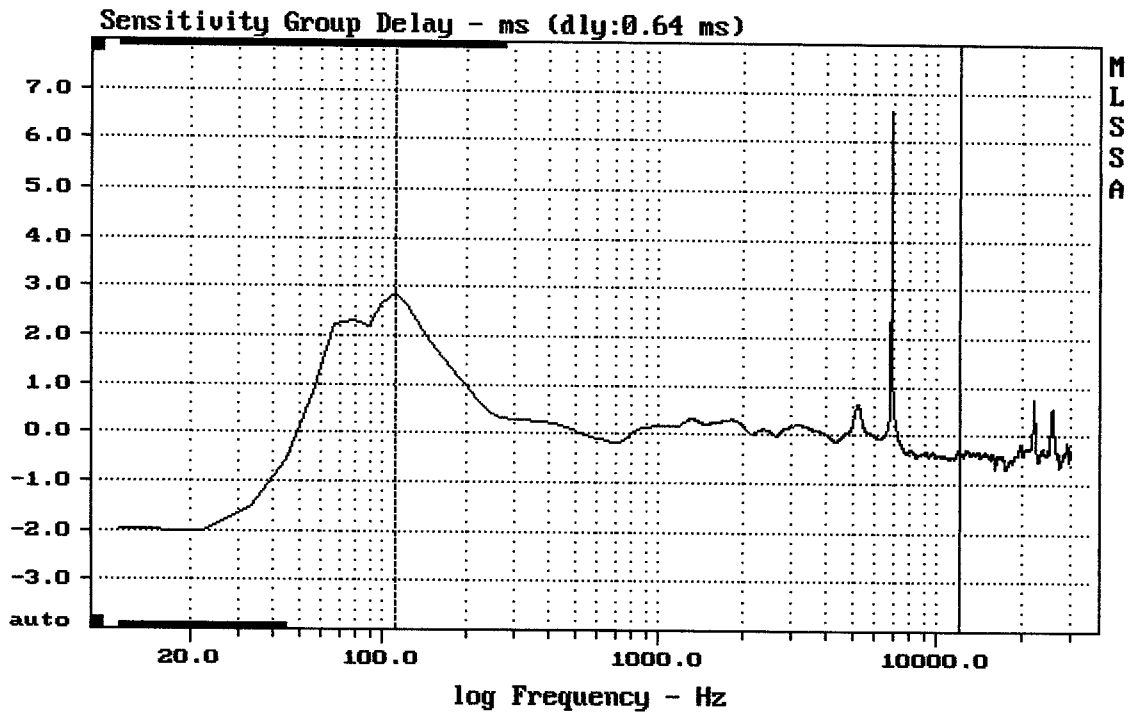
C-U PROSTAX PS-12SII

MLSSA: Frequency Domain



mean: -99.31, rms: 181.9, std: 152.4, max: 263.8, min: -406.9

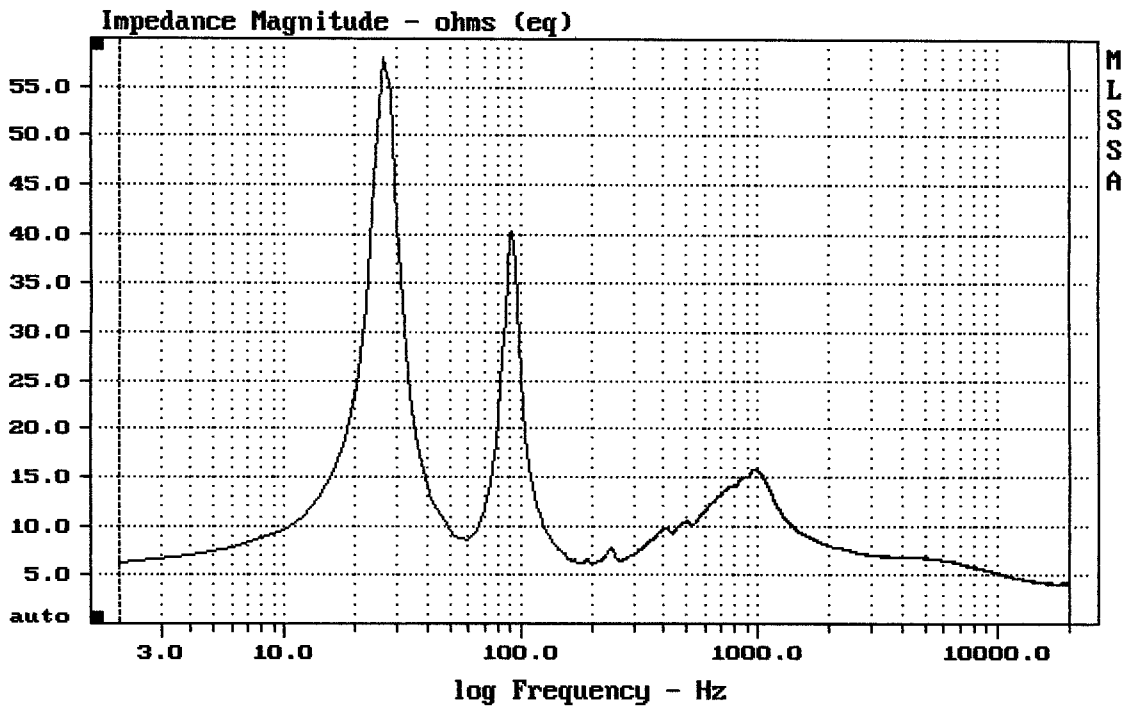
C-U PROSTAX PS-12SII



mean: -0.02995, rms: 0.5269, std: 0.526, max: 6.62, min: -0.4952

C-V PROSTAX PS-12SII

MLSSA: Frequency Domain



mean: 5.881, rms: 6.385, std: 2.485, max: 58.02, min: 4.121

C-V PROSTAX PS-12SII