

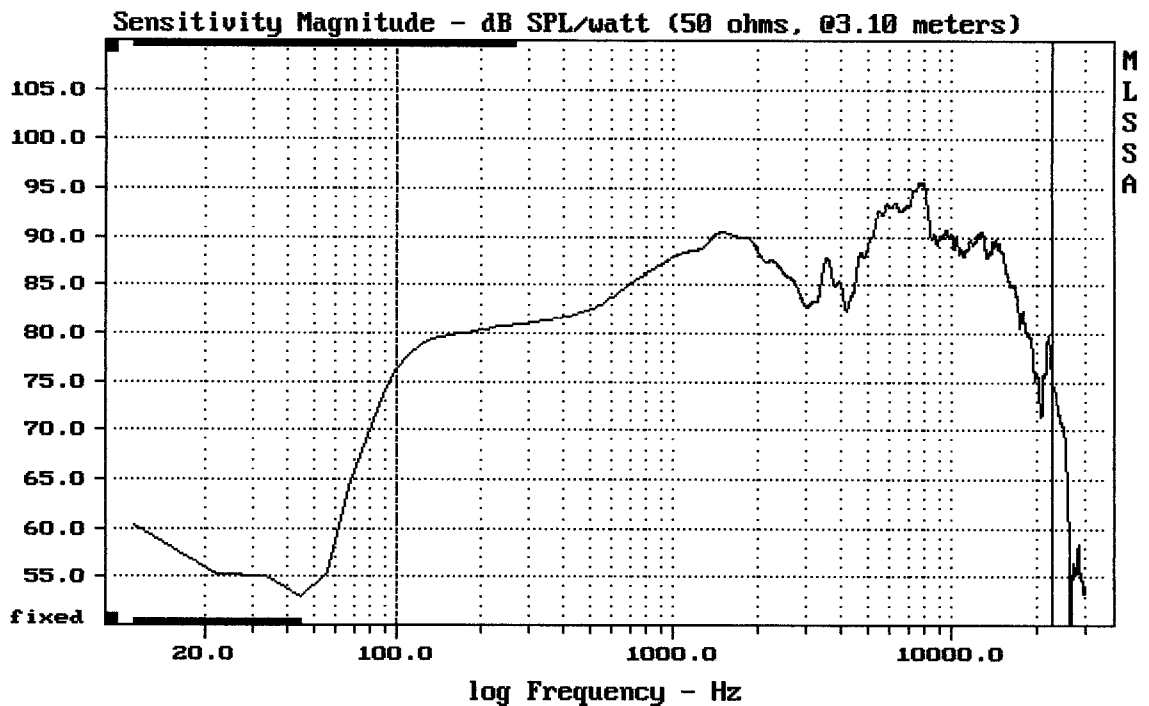

---

mean: 651.2, rms: 673.5, std: 172, max: 1099, min: 389.2

---

RH SOUND BS 1040T/W

MLSSA: Frequency Domain

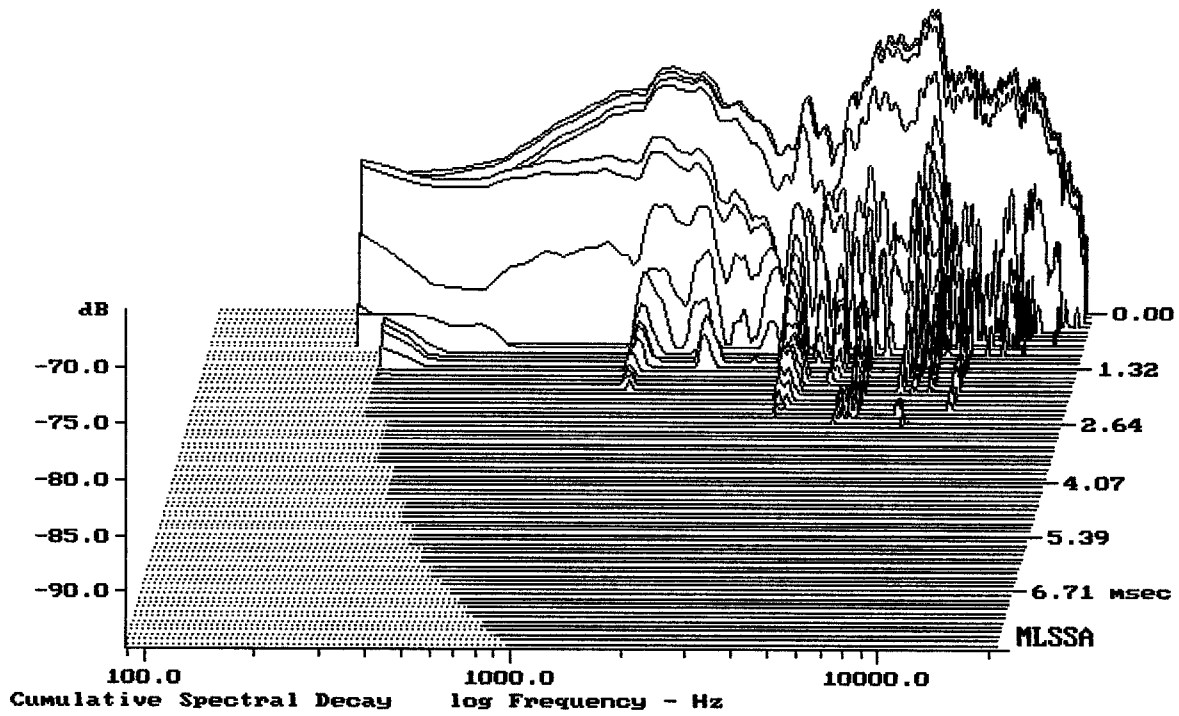



---

Level (100:23005 Hz) = 87.53 dB SPL/watt (50 ohms, @3.10 meters)

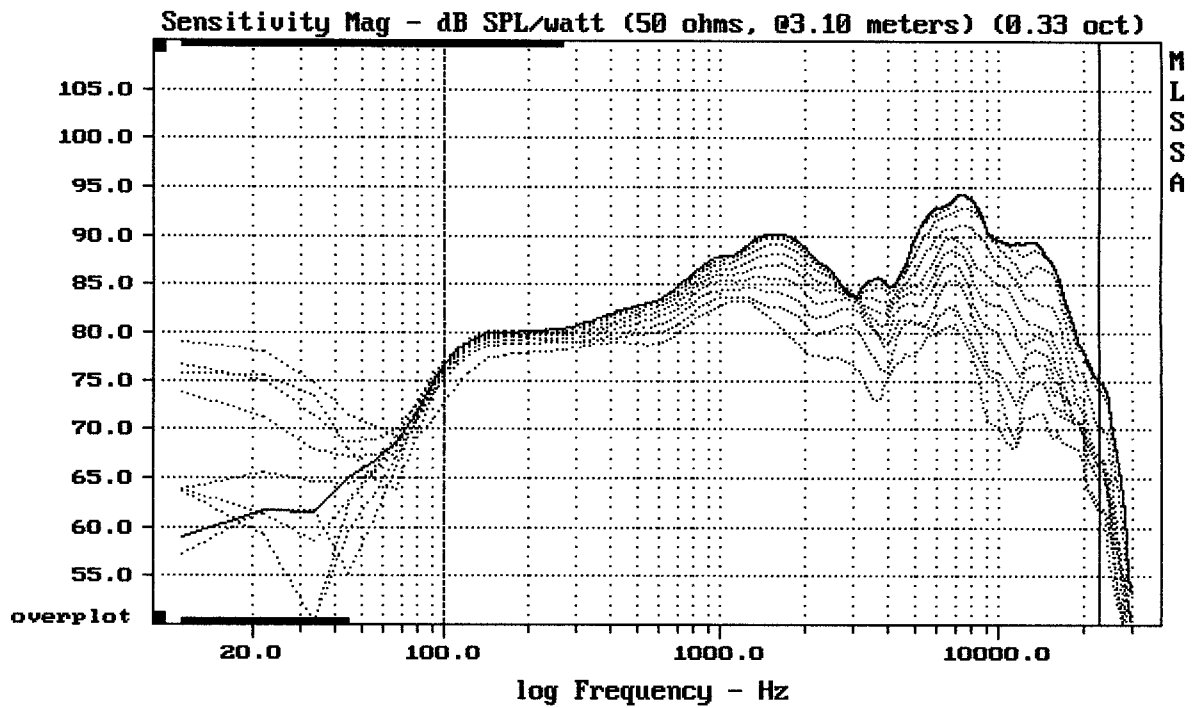
---

RH SOUND BS 1040T/W

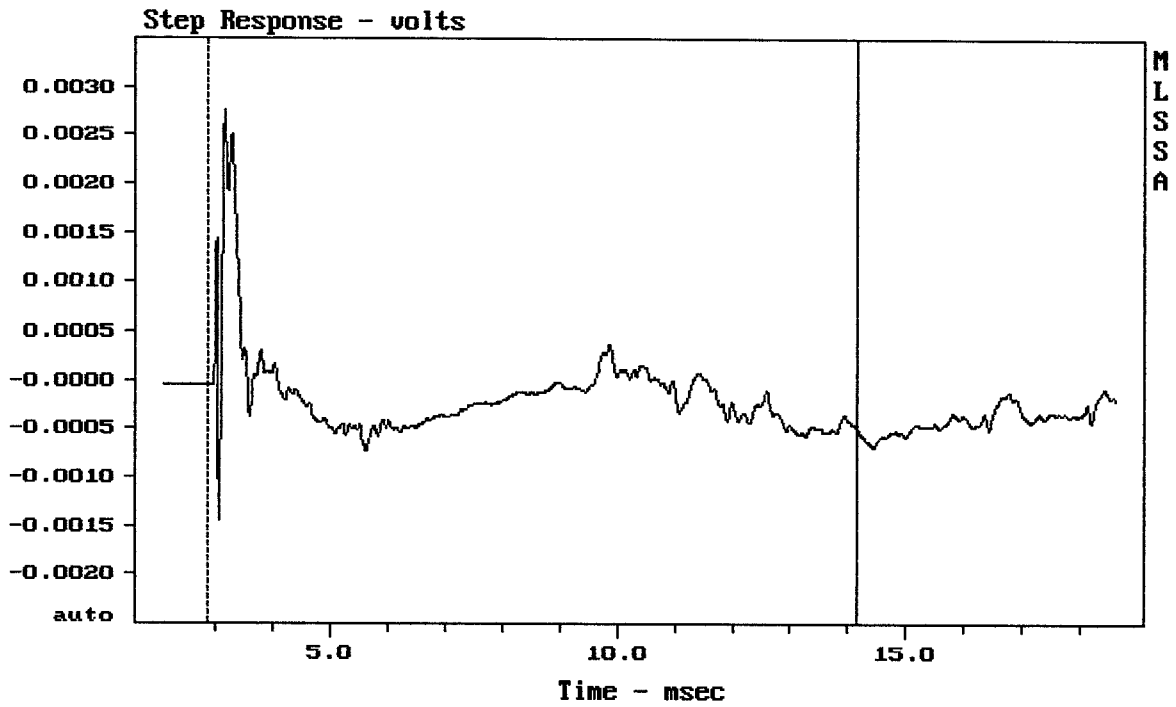


-94.52 dB, 3418 Hz (77), 2.310 msec (22)

DITO



Overlay Compare: dev= +12/-7, std= 4.2, avg= -14



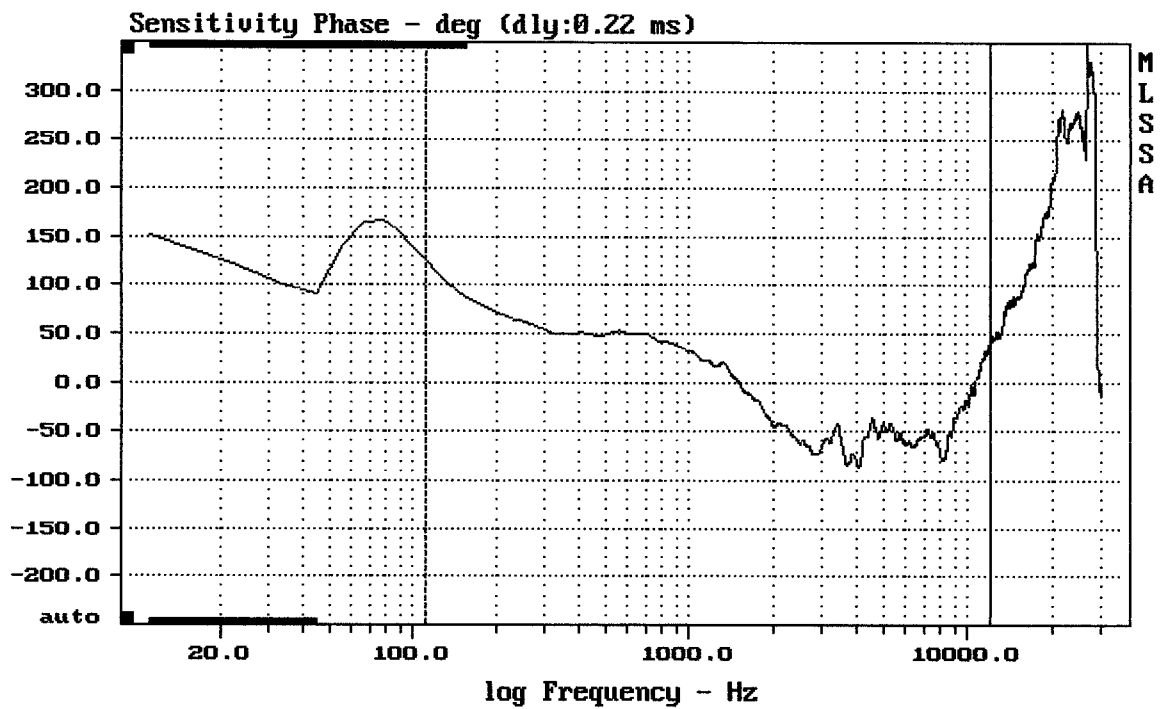

---

mean: -0.00017, rms: 0.0004773, std: 0.000446, max: 0.00275, min: -0.001456

---

RH SOUND BS 1040T/W

MLSSA: Time Domain

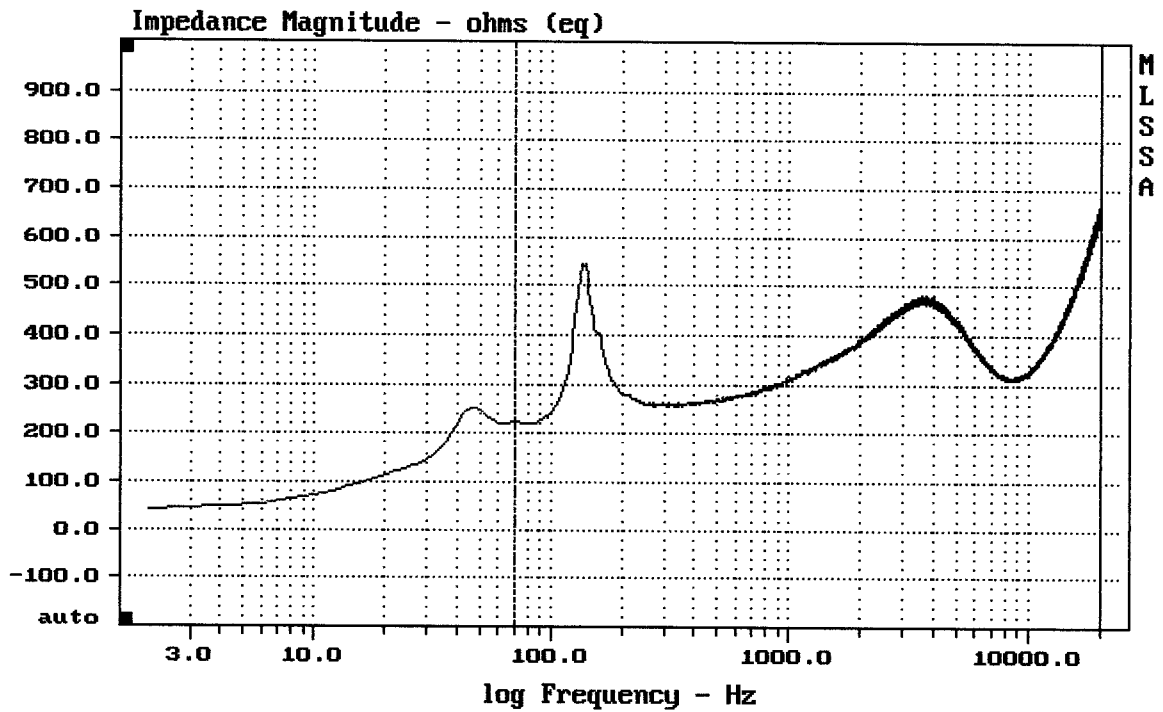



---

mean: -30.88, rms: 49.89, std: 39.18, max: 125.1, min: -86.54

---

RH SOUND BS 1040T/W



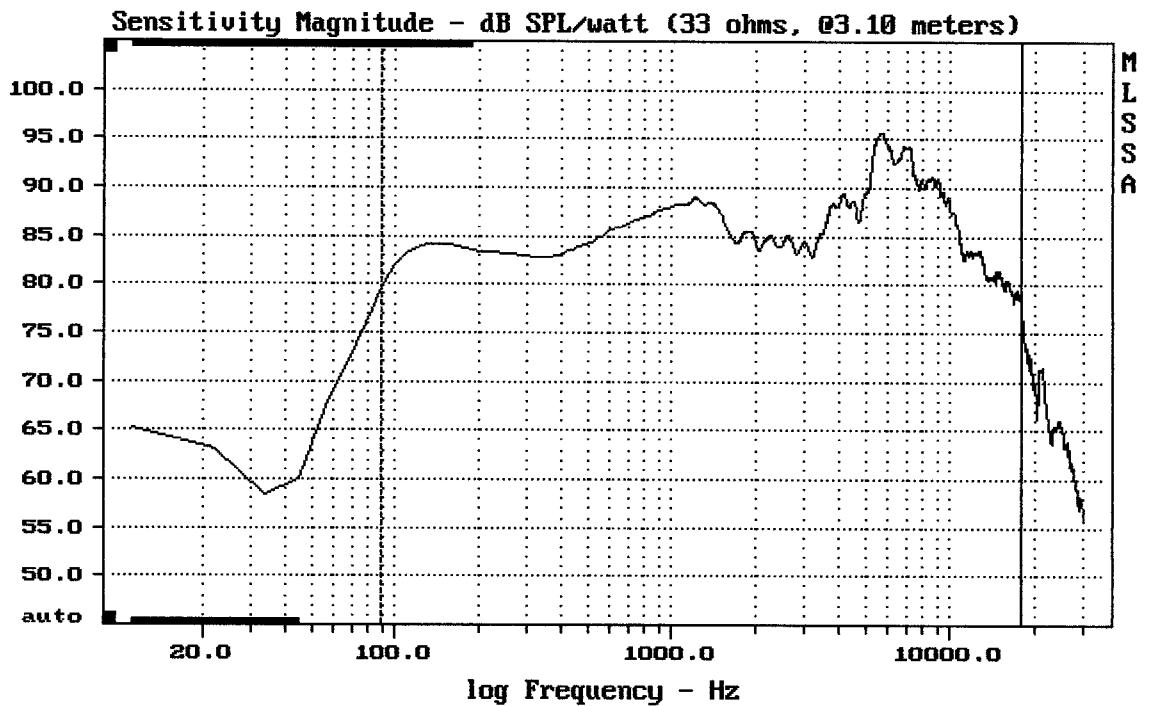

---

mean: 423.3, rms: 434.5, std: 98.08, max: 671.2, min: 220.1

---

RH SOUND BS 1050T/B

MLSSA: Frequency Domain

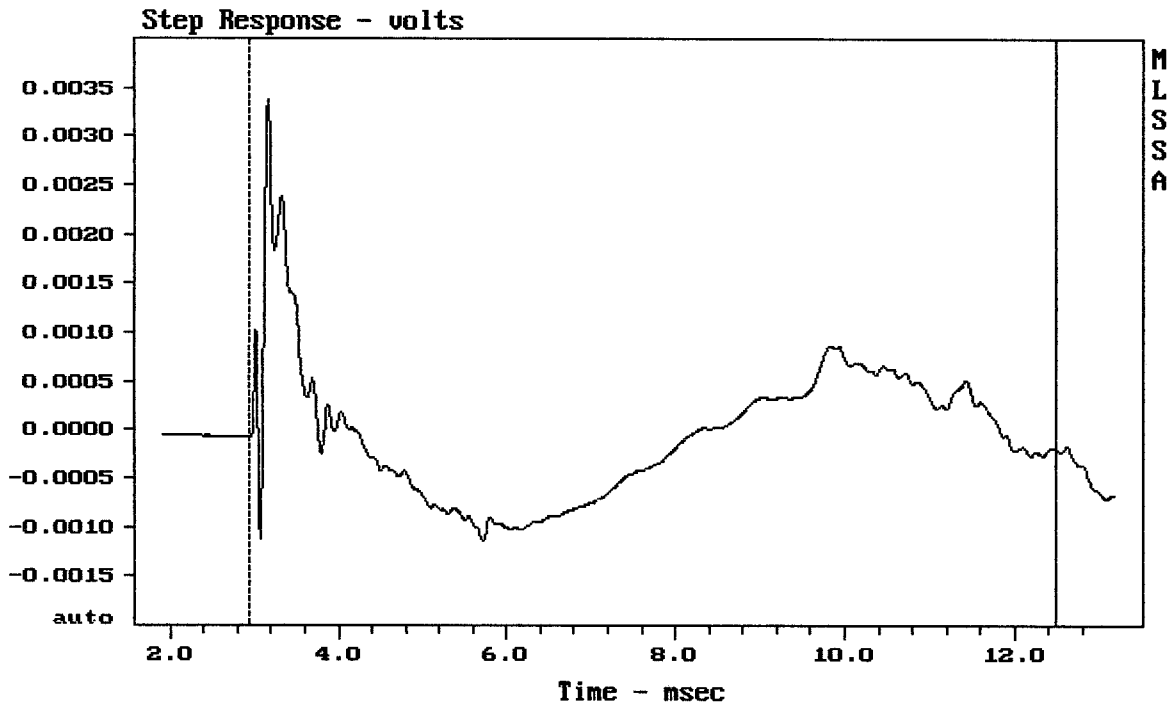



---

Level (89:17856 Hz) = 87.19 dB SPL/watt (33 ohms, @3.10 meters)

---

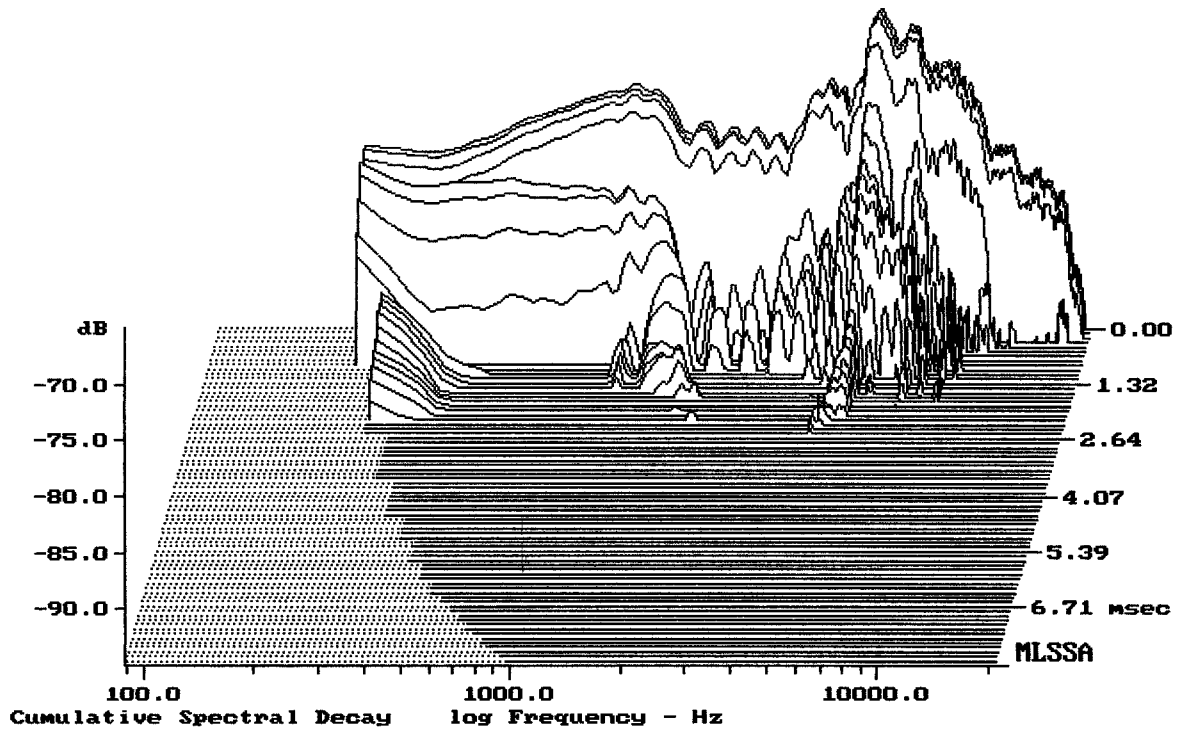
RH SOUND BS 1050T/B



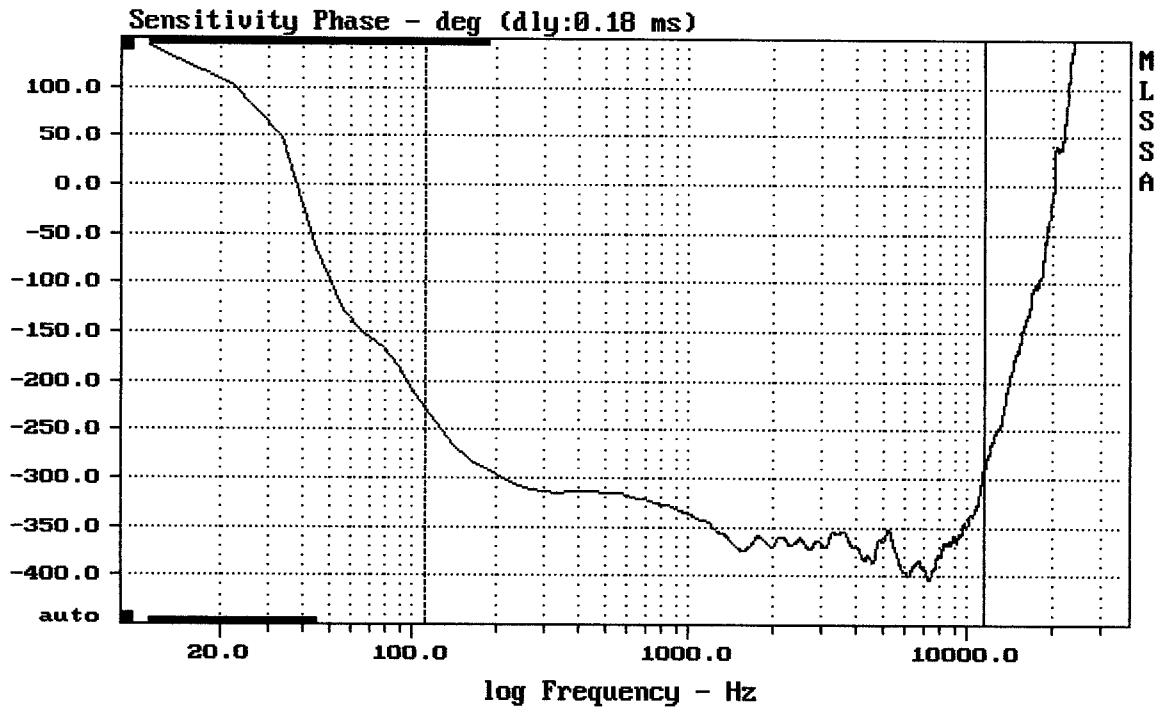
mean:  $-4.181e-005$ , rms: 0.0007044, std: 0.0007031, max: 0.003383, min: -0.0011

RH SOUND BS 1050T/B

MLSSA: Time Domain



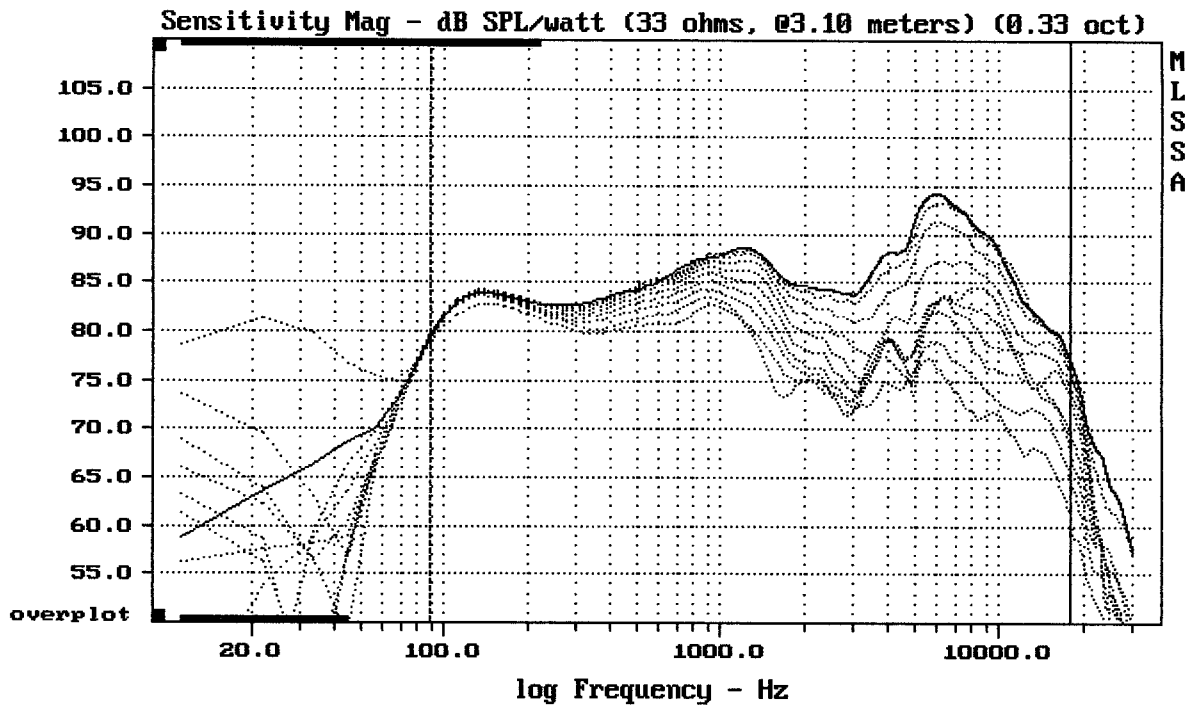
-93.75 dB, 4483 Hz (101), 2.200 msec (21)



mean: -361, rms: 361.9, std: 25.41, max: -227.4, min: -404.2

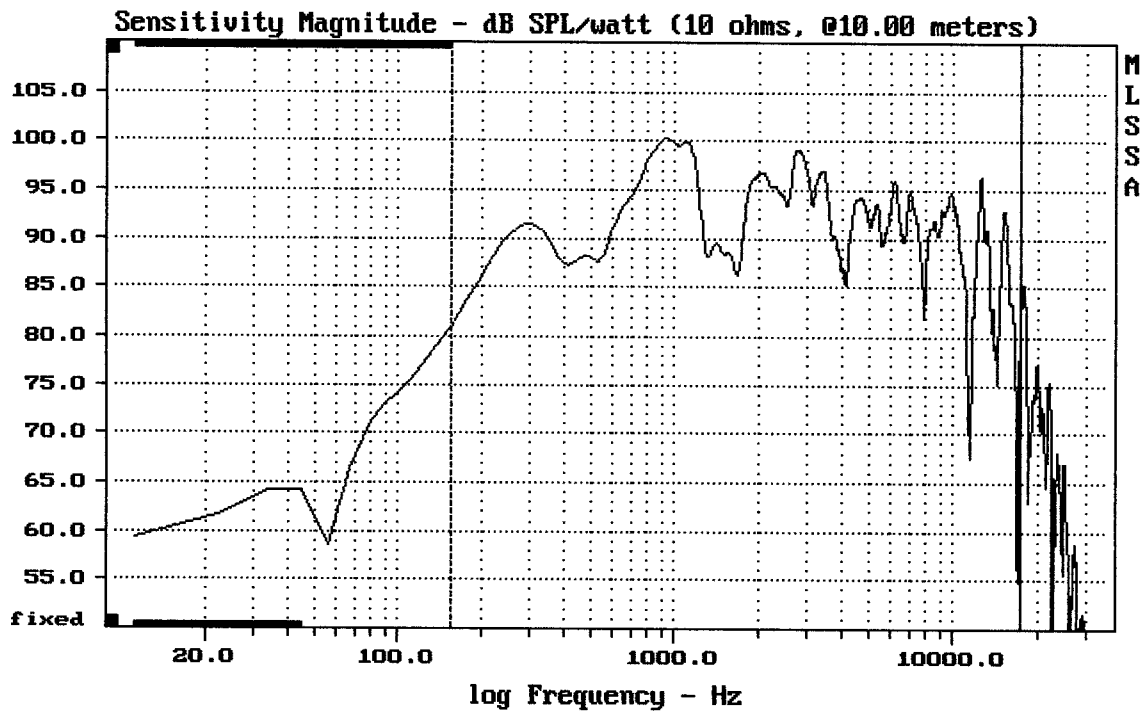
RH SOUND BS 1050T/B

MLSSA: Frequency Domain



Overlay Compare: dev= +14/-5.3, std= 3.7, avg= -15

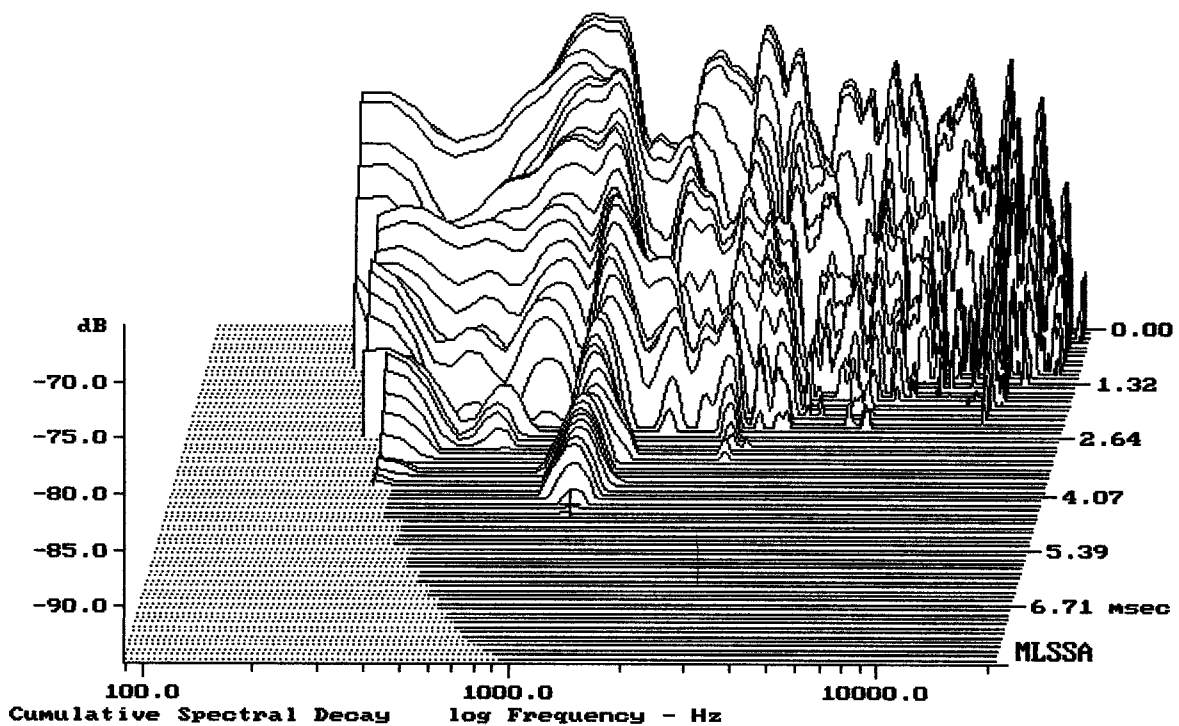
RH SOUND BS 1050T/B



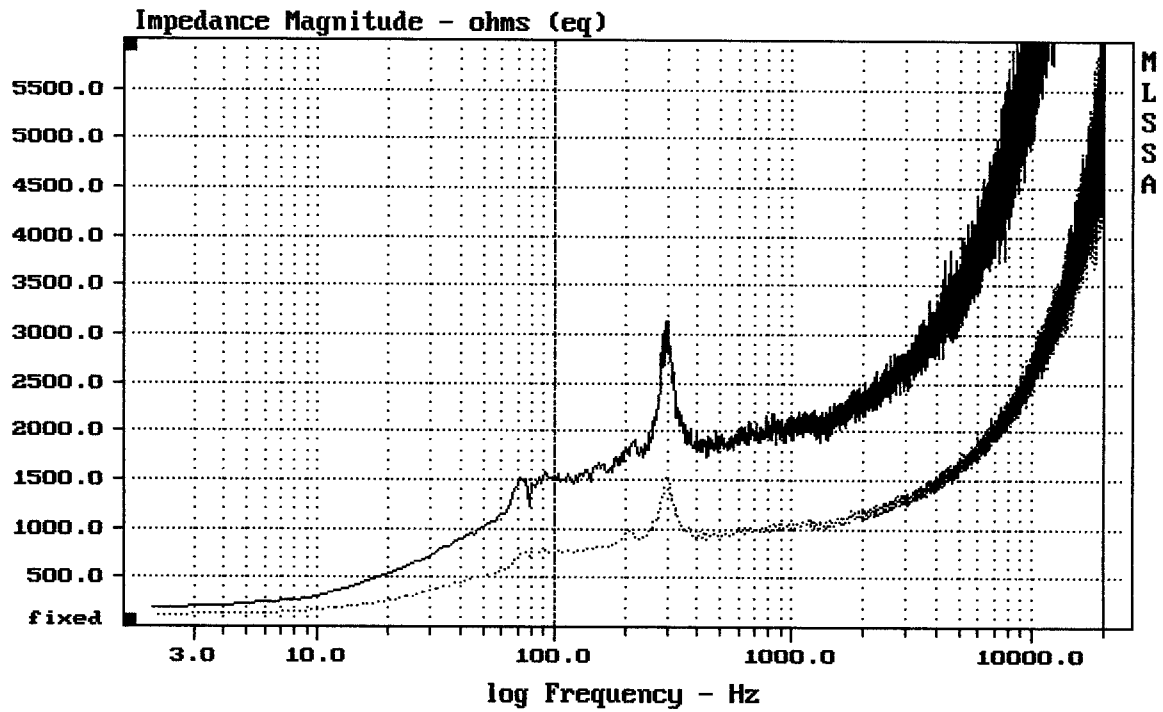
mean: 90.92, rms: 92.18, std: 3.96, max: 100.21, min: 54.80

RH SOUND SA3-55Q

MLSSA: Frequency Domain

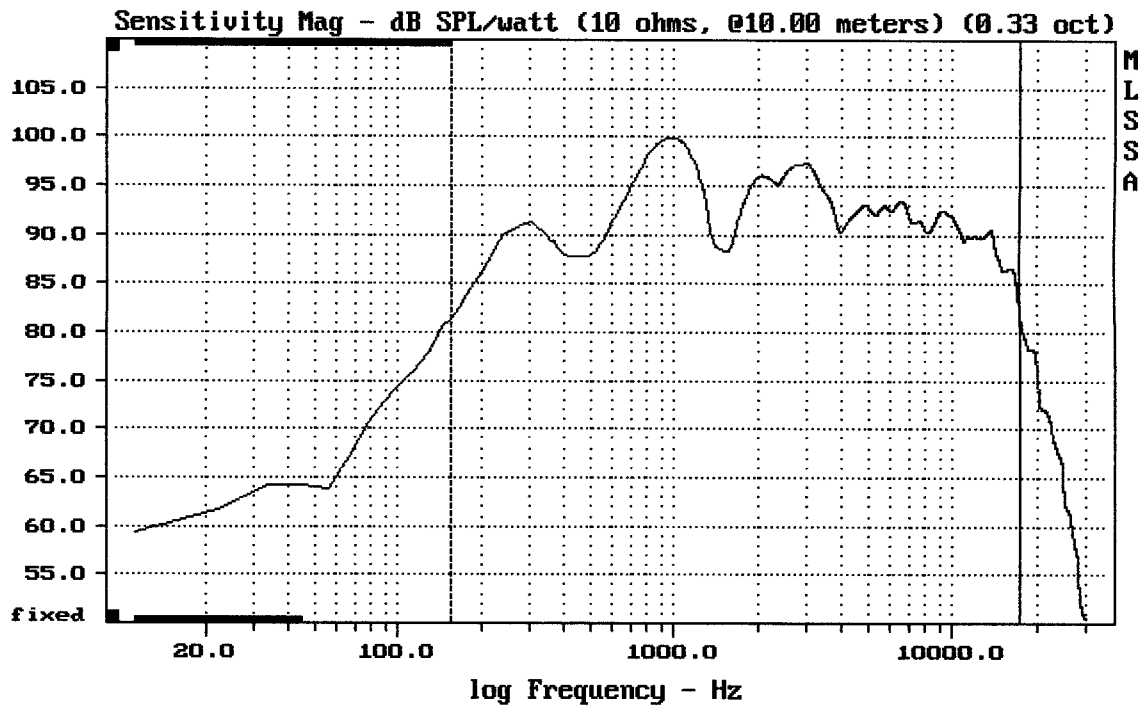


-94.70 dB, 1110 Hz (25), 4.400 msec (41)



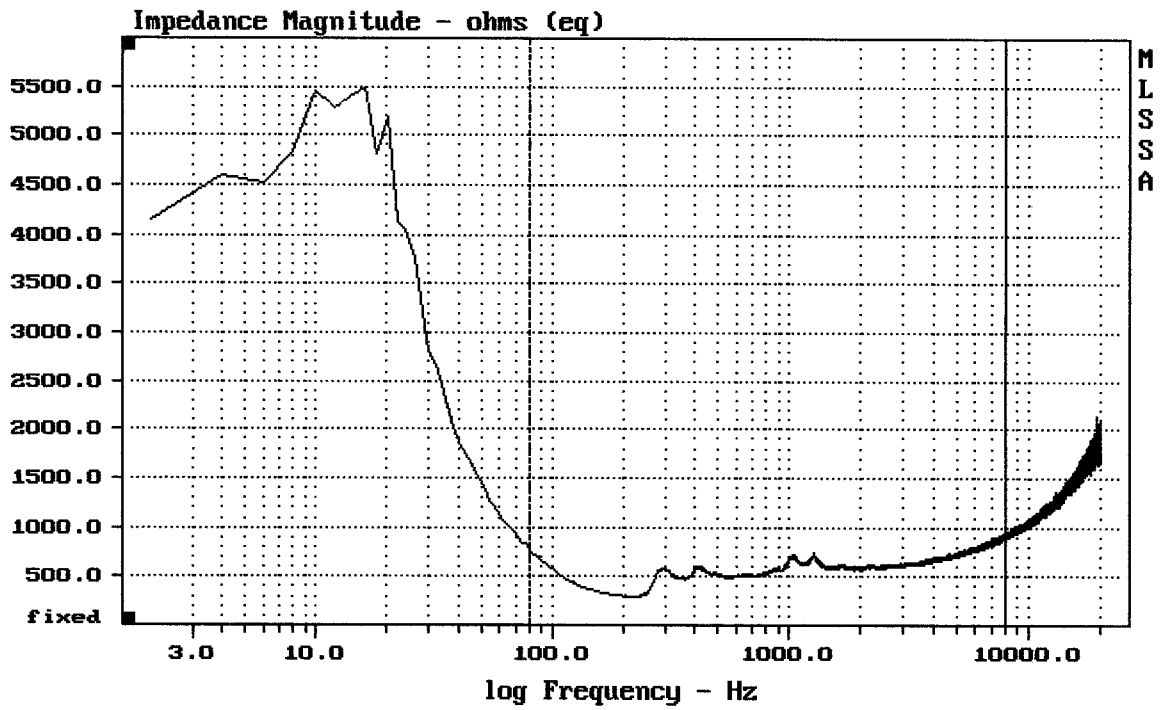
RH SOUND SA3-55Q

MLSSA: Frequency Domain



RH SOUND SA3-55Q





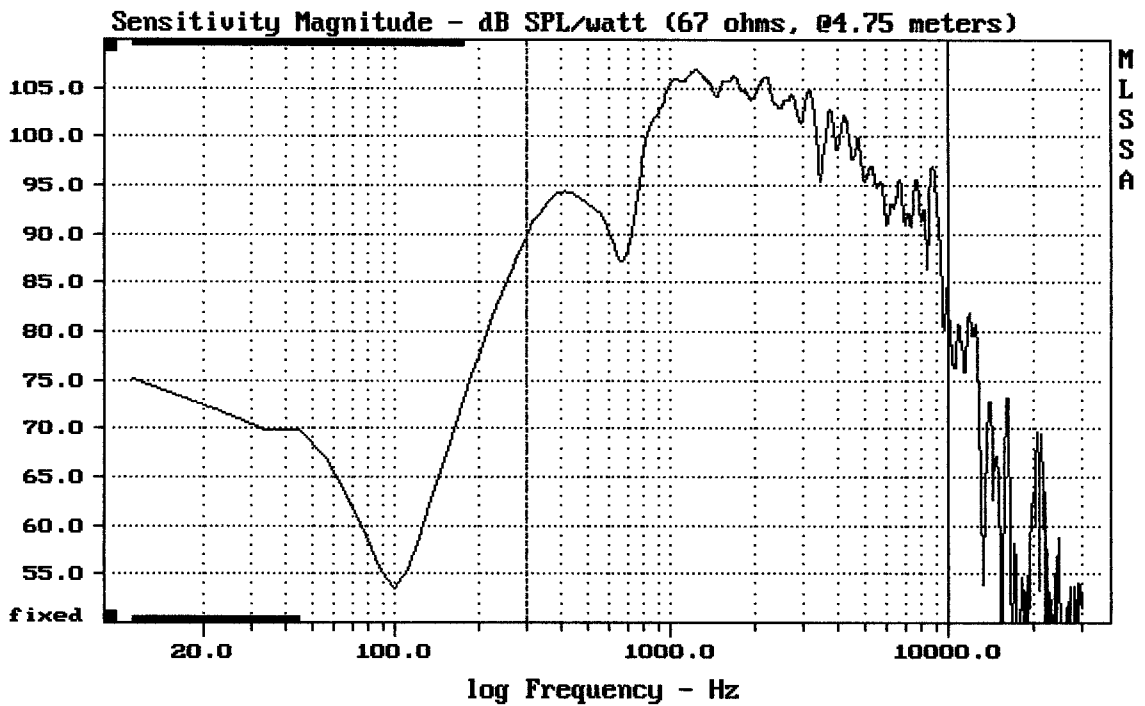

---

mean: 691.5, rms: 701.3, std: 116.6, max: 943.7, min: 293.1

---

RH SOUND XHK-8515P 15W/67ohm

MLSSA: Frequency Domain

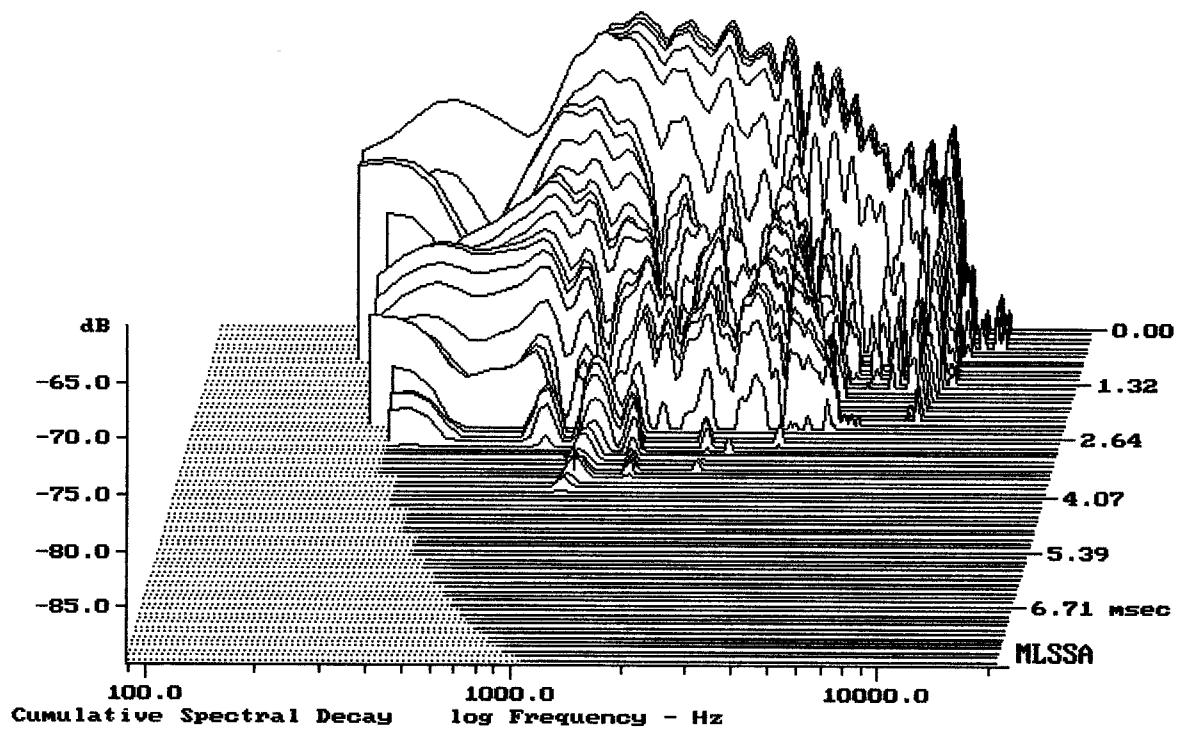



---

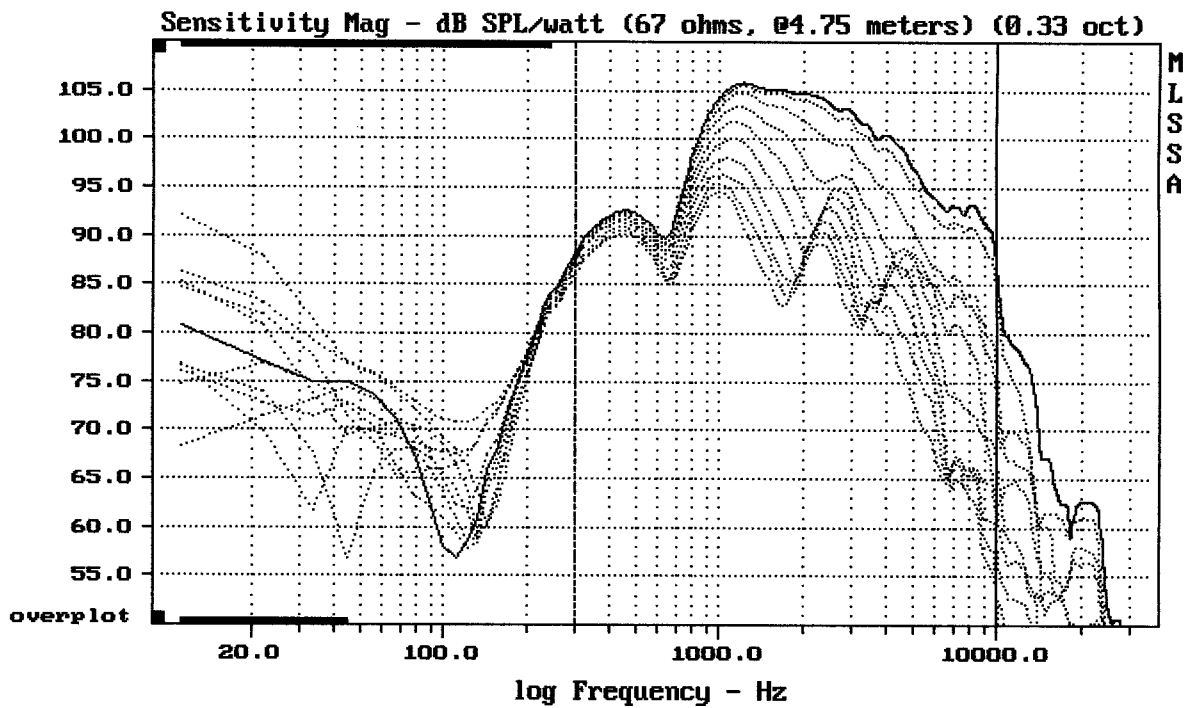
Level (300:9999 Hz) = 101.52 dB SPL/watt (67 ohms, @4.75 meters)

---

RH SOUND XHK-8515P 15W/67ohm



-88.04 dB, 1065 Hz (24), 3.630 msec (34)



Overlay Compare: dev= +21/-11, std= 7.6, avg= -23

RH SOUND XHK-8515P 15W/670ohm