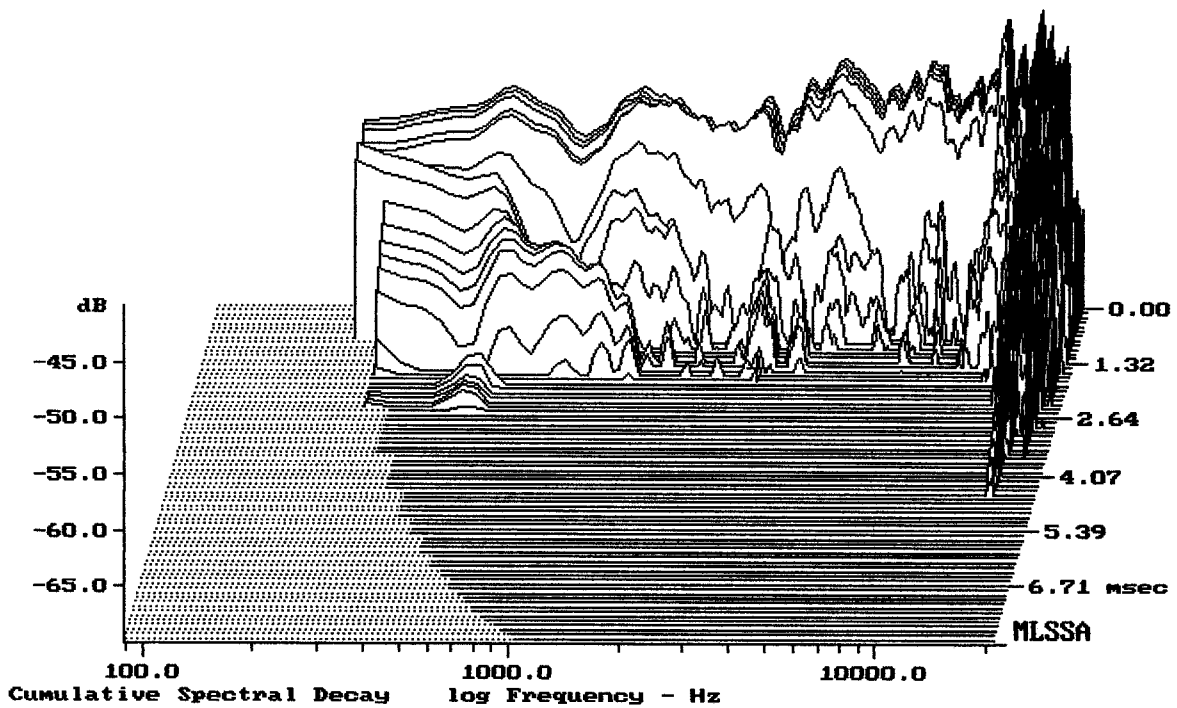


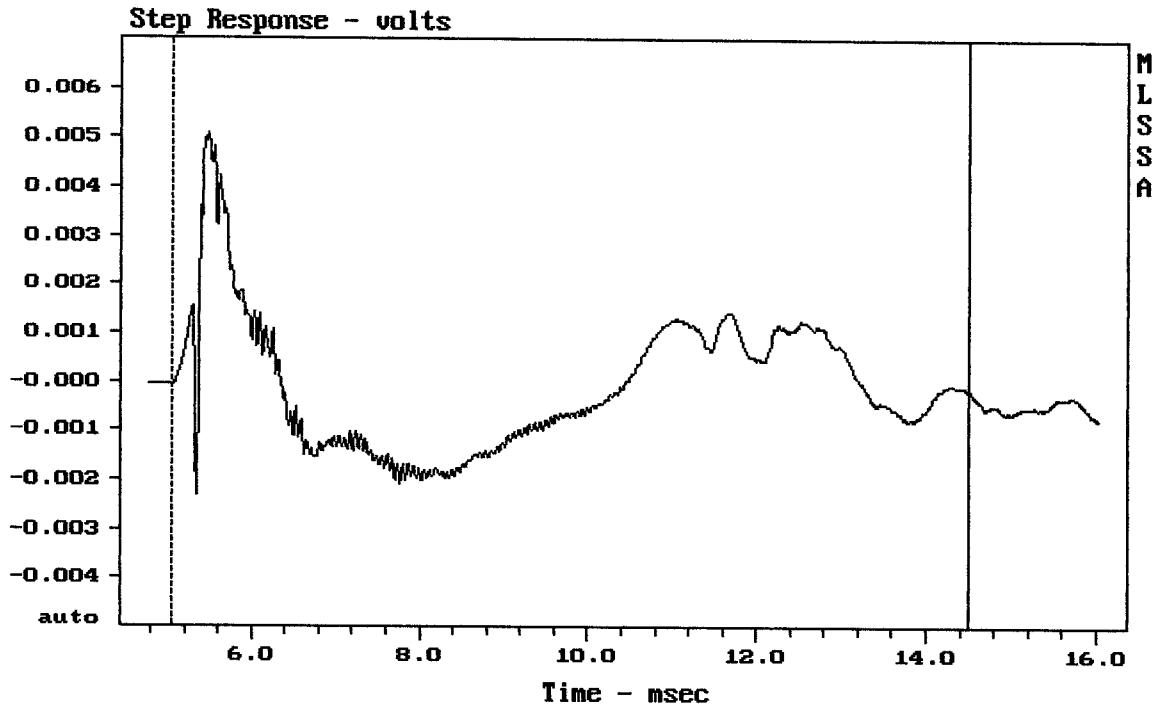
Level (89:18510 Hz) = 99.26 dB SPL/watt (8 ohms, @1.70 meters)

RCF ACUSTICA C5212-W

MLSSA: Frequency Domain



-68.86 dB, 2974 Hz (67), 1.760 msec (17)



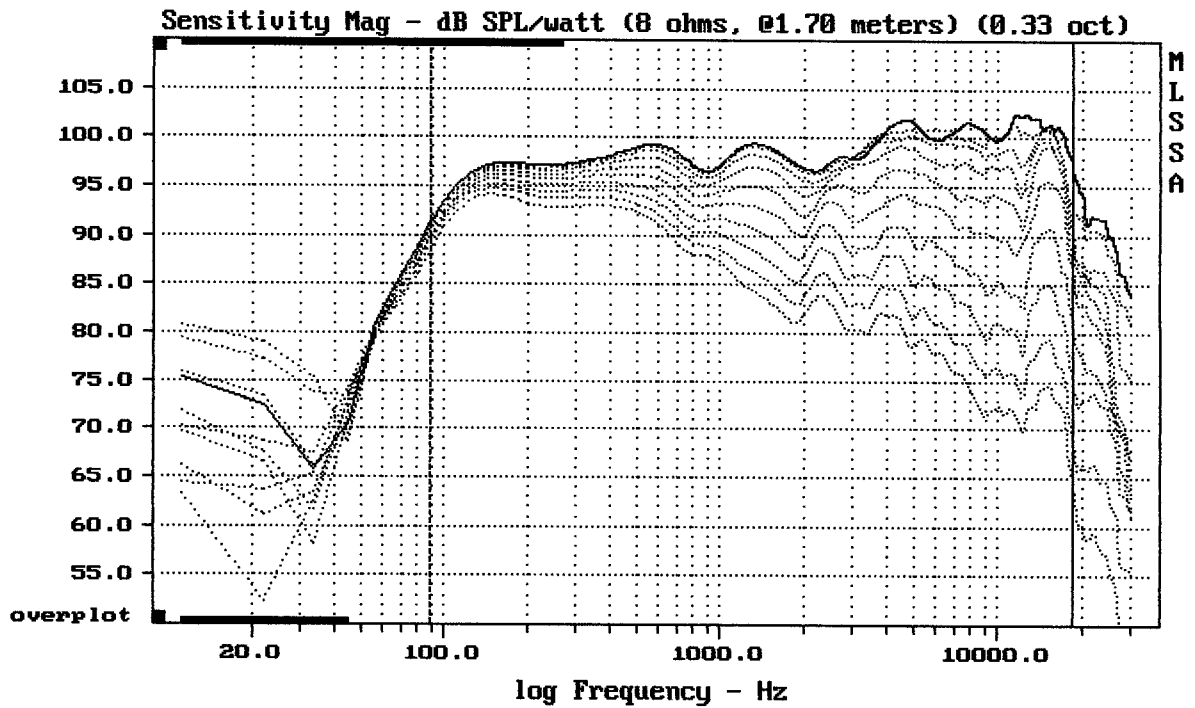
---

mean:  $-7.422e-005$ , rms: 0.00135, std: 0.001348, max: 0.005101, min: -0.002328

---

RCF ACUSTICA C5212-W

MLSSA: Time Domain

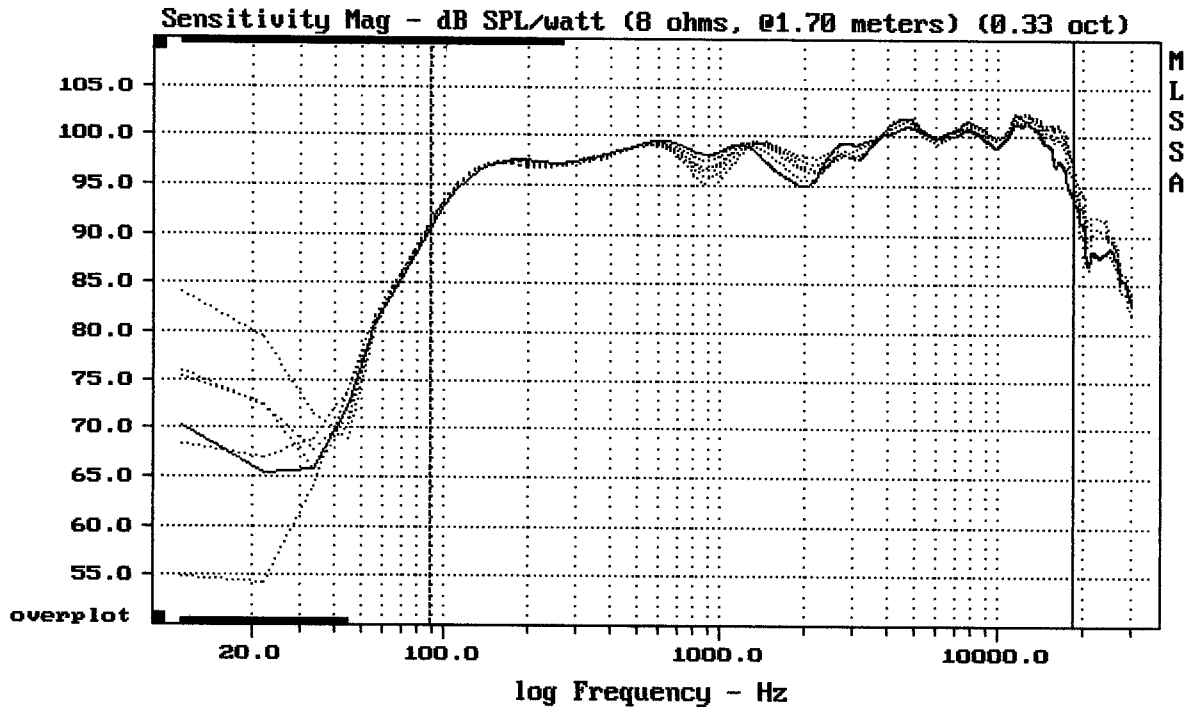


---

Overlay Compare: dev= +22/-8, std= 6.5, avg= -24

---

RCF ACUSTICA C5212-W



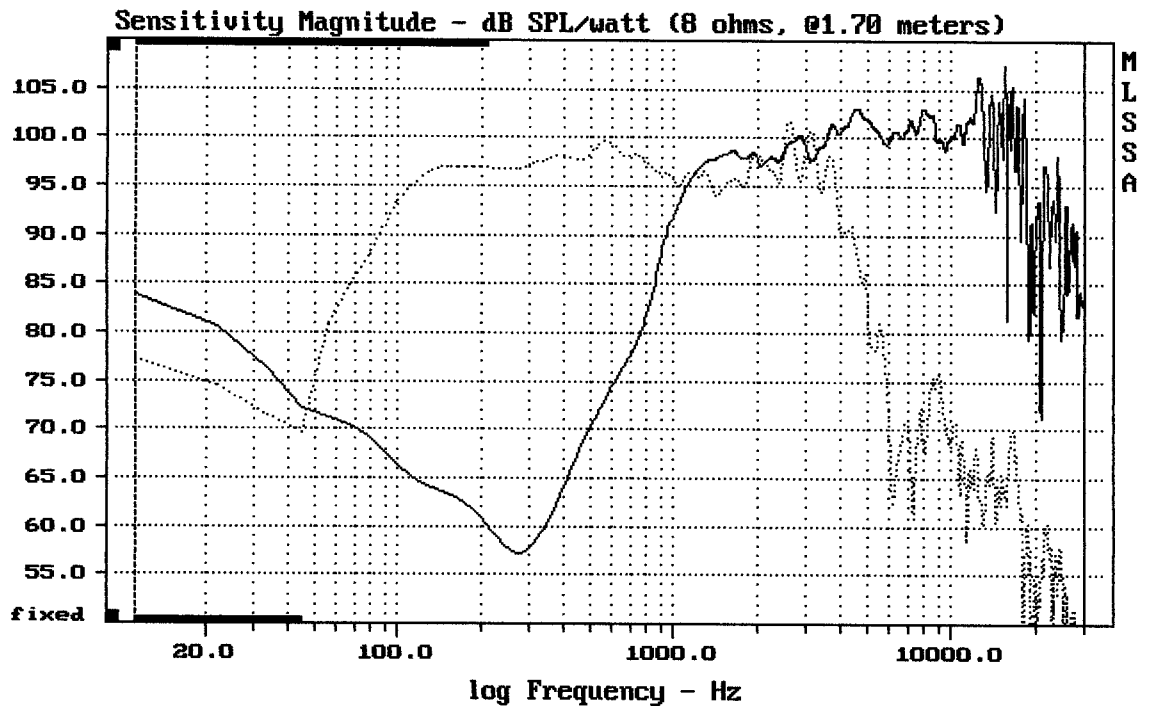
---

mean: 99.78, rms: 99.88, std: 1.25, max: 101.85, min: 91.10

---

RCF ACUSTICA C5212-W

MLSSA: Frequency Domain

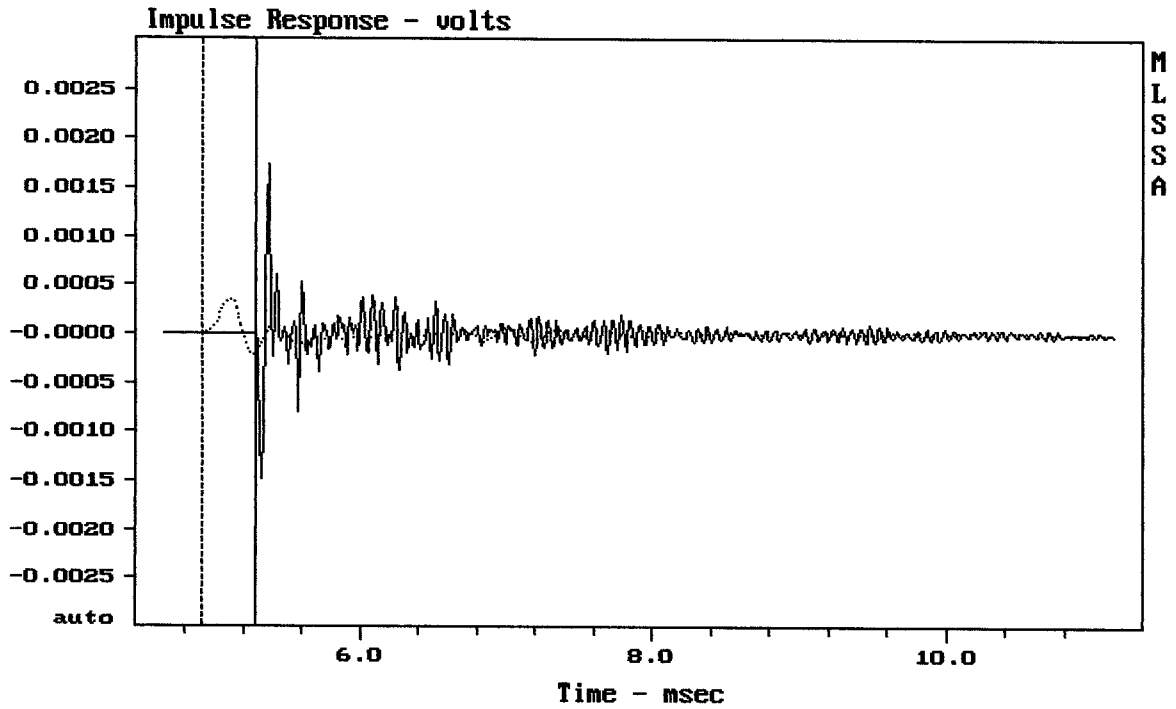


---

CURSOR: dy = -36.5796 x = 30007.1014 (2704)

---

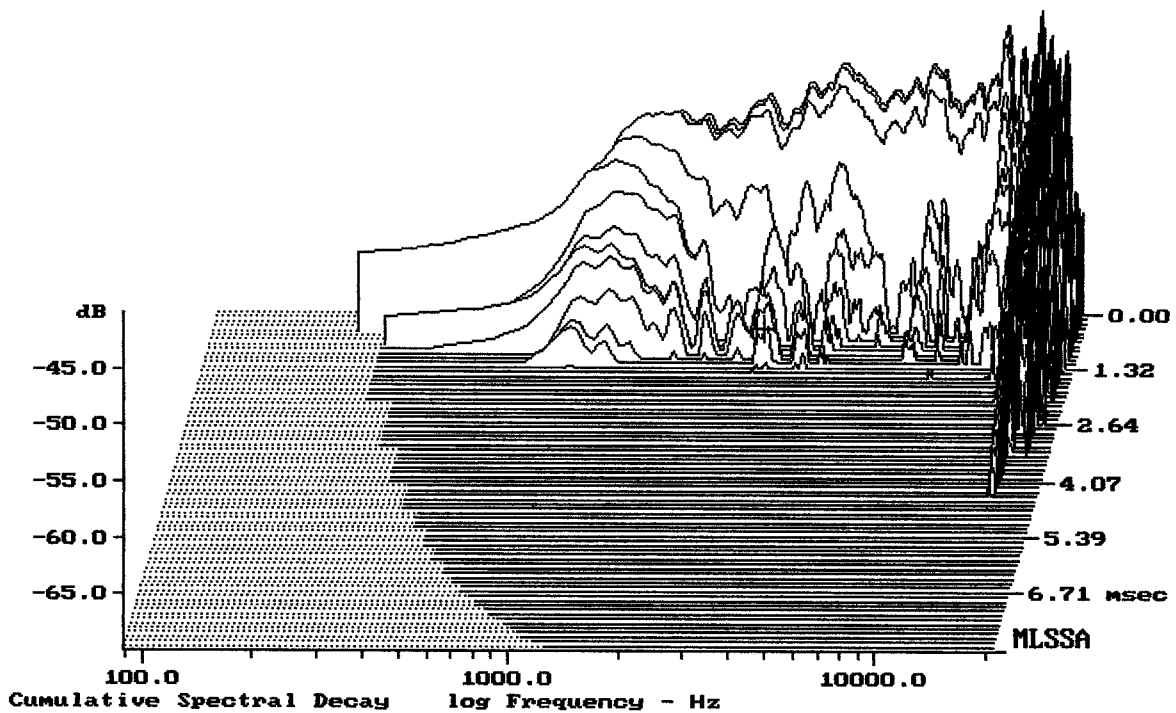
RCF ACUSTICA C5212-W



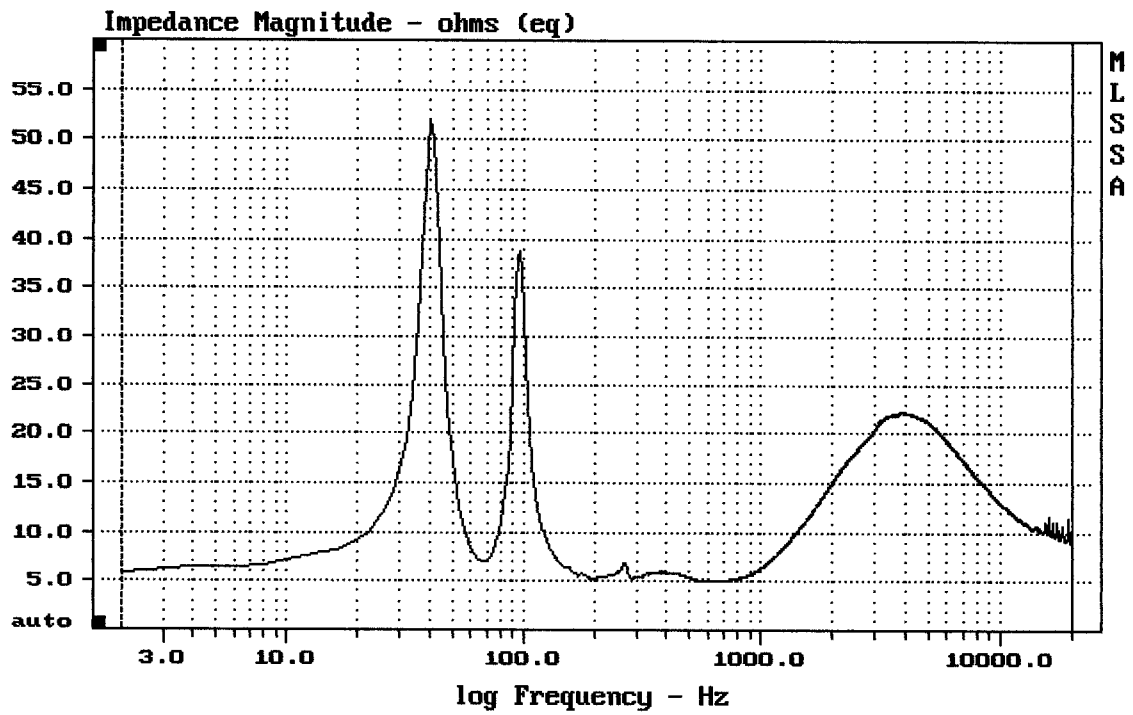
CURSOR:  $y = -7.05063e-006$   $x = 5.2800$  (480)

RCF ACUSTICA C5212-W

MLSSA: Time Domain



-66.93 dB, 3018 Hz (68), 1.210 msec (12)



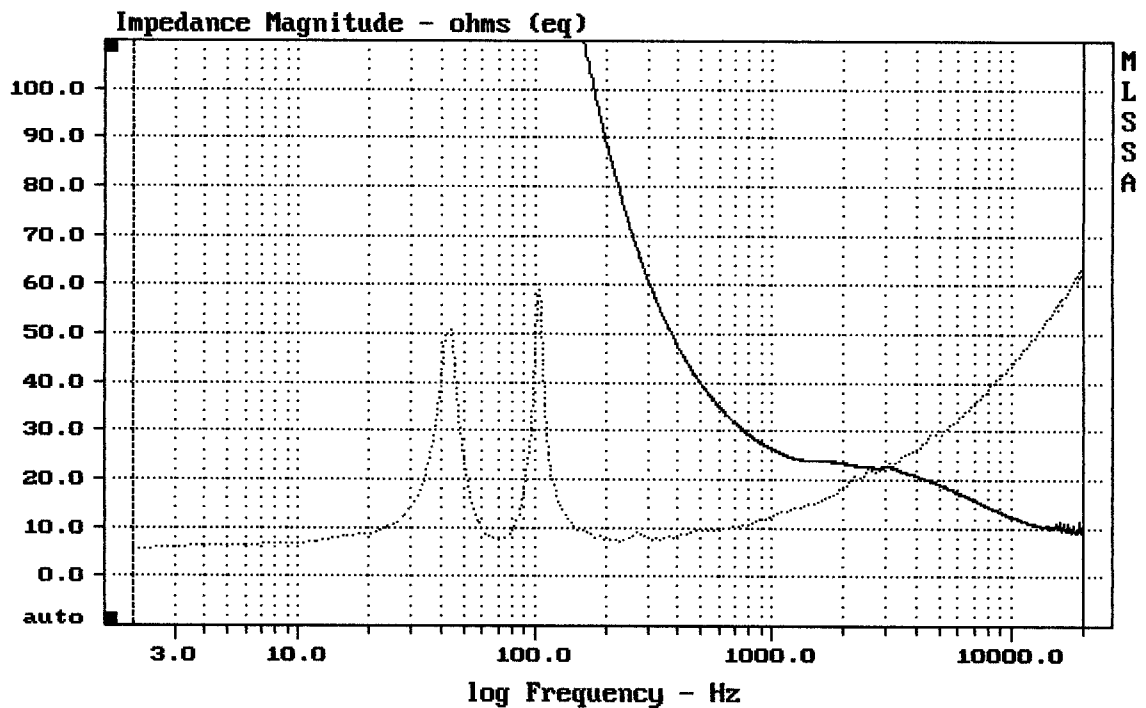
---

mean: 13.42, rms: 14.18, std: 4.572, max: 52.08, min: 5.056

---

RCF ACUSTICA C5212-W

MLSSA: Frequency Domain

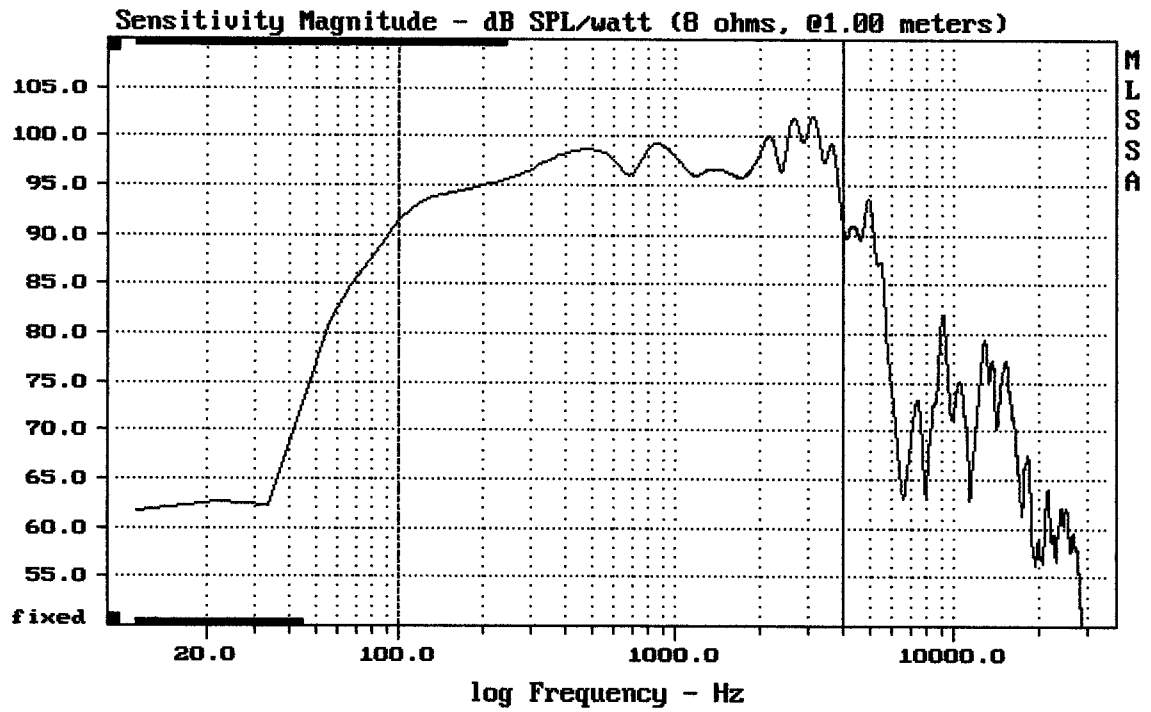


---

mean: 41.27, rms: 43.99, std: 15.25, max: 63.97, min: 5.741

---

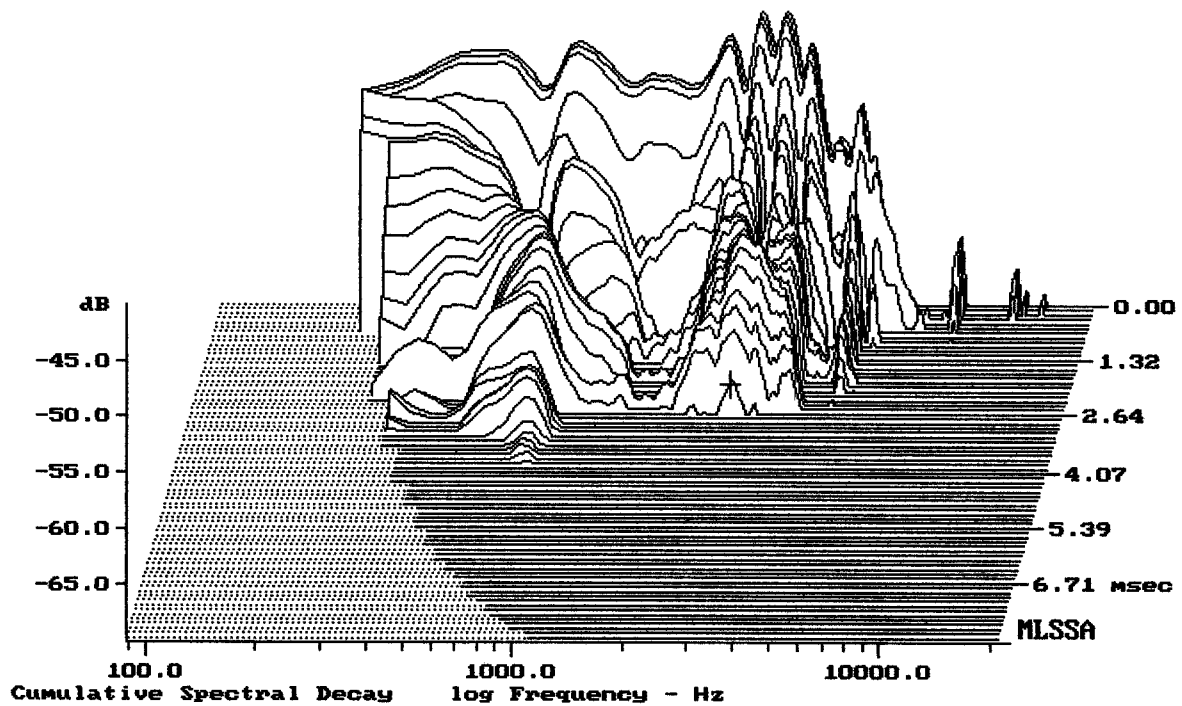
RCF ACUSTICA C5212-W



Level (100:3995 Hz) = 97.31 dB SPL/watt (8 ohms, @1.00 meters)

12" RCF FROM ACUSTICA C5212-W

MLSSA: Frequency Domain



-67.32 dB, 2619 Hz (59), 2.640 msec (25)

Measured Data

QC Limits

Line	Parameter	Value	Units
1	RMSE-free	0.48	Ohms
2	Fs	65.68	Hz
3	Re	5.48	Ohms[dc]
4	Res	109.21	Ohms
5	Qms	7.45	
6	Qes	0.37	
7	Qts	0.36	
8	L1	0.93	mH
9	L2	1.55	mH
10	R2	4.23	Ohms
11	RMSE-load	0.43	Ohms
12	Vas(Sd)	45.96	liters
13	Mms	50.59	grams
14	Cms	116	$\mu\text{M}/\text{Newton}$
15	B1	17.50	Tesla-M
16	SPLref(Sd)	97.2	dB[Re]
17	Rub-index	0.01	

Method: Mass-loaded (40.00 grams)

Area (Sd): 530.93 sq cm

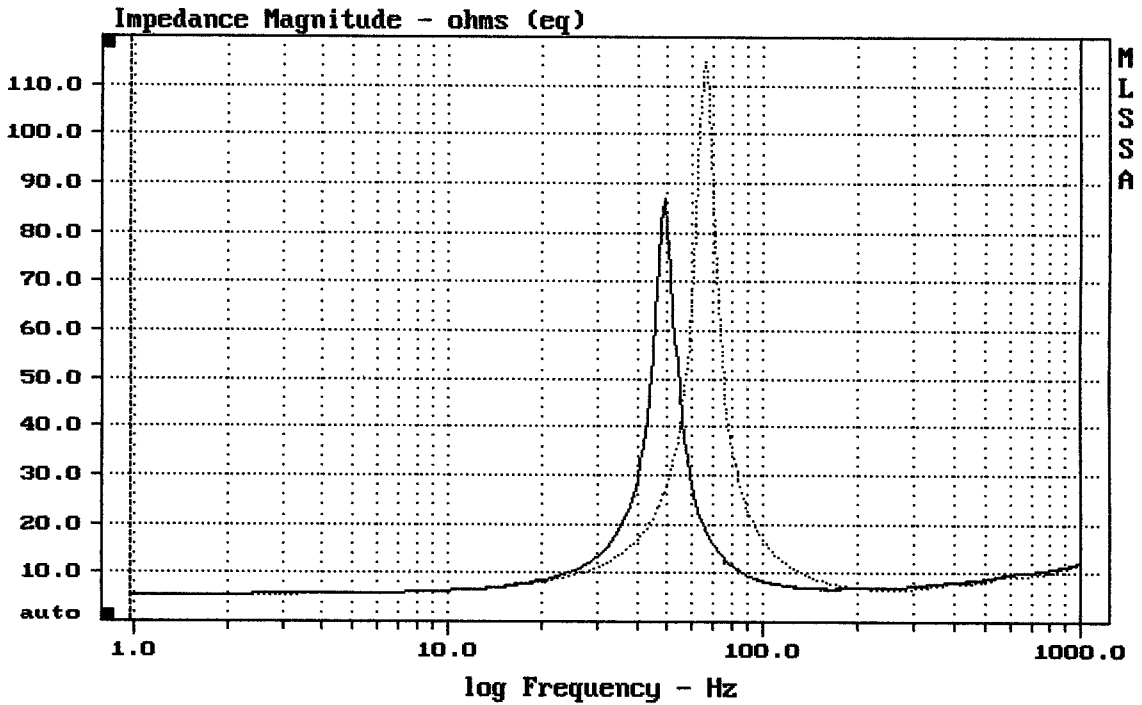
DCR mode: Measure (-0.07 ohms)

QC file: CLOSED

Analysis successful. Shift in Fs = -25.6% (-20% to -50% is recommended).

12" RCF FROM ACUSTICA C5212-W

MLSSA: Parameters



mean: 11.19, rms: 15.65, std: 10.95, max: 114.9, min: 5.559

MLSSA: Frequency Domain