

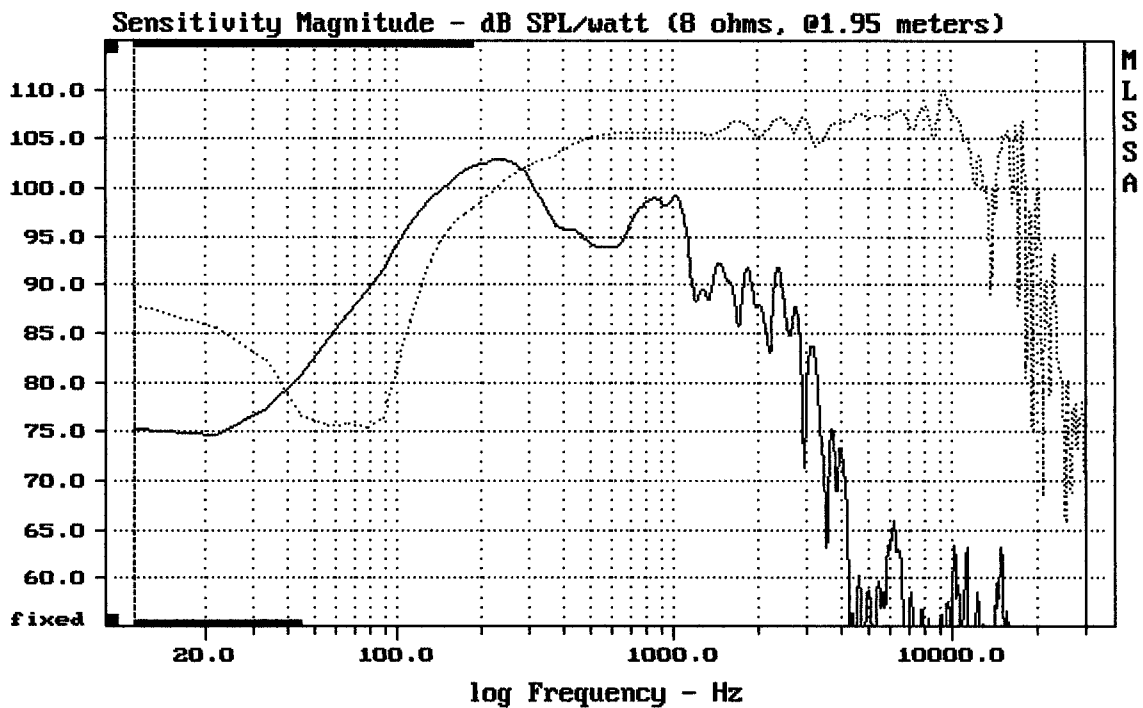
---

mean: 0.0001374, rms: 0.0009558, std: 0.0009459, max: 0.001791, min: -0.001474

---

RCF ACUSTICA H1315

MLSSA: Time Domain

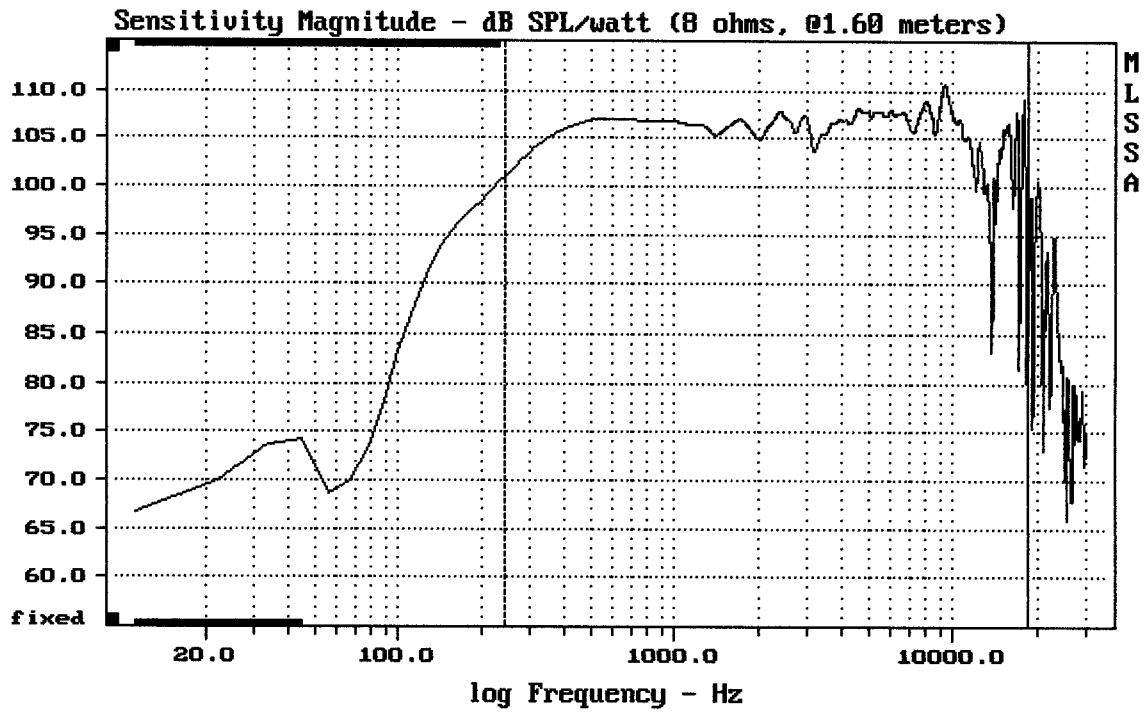


---

CURSOR: dy = 37.6405 x = 30007.1014 (2704)

---

RCF ACUSTICA H1315



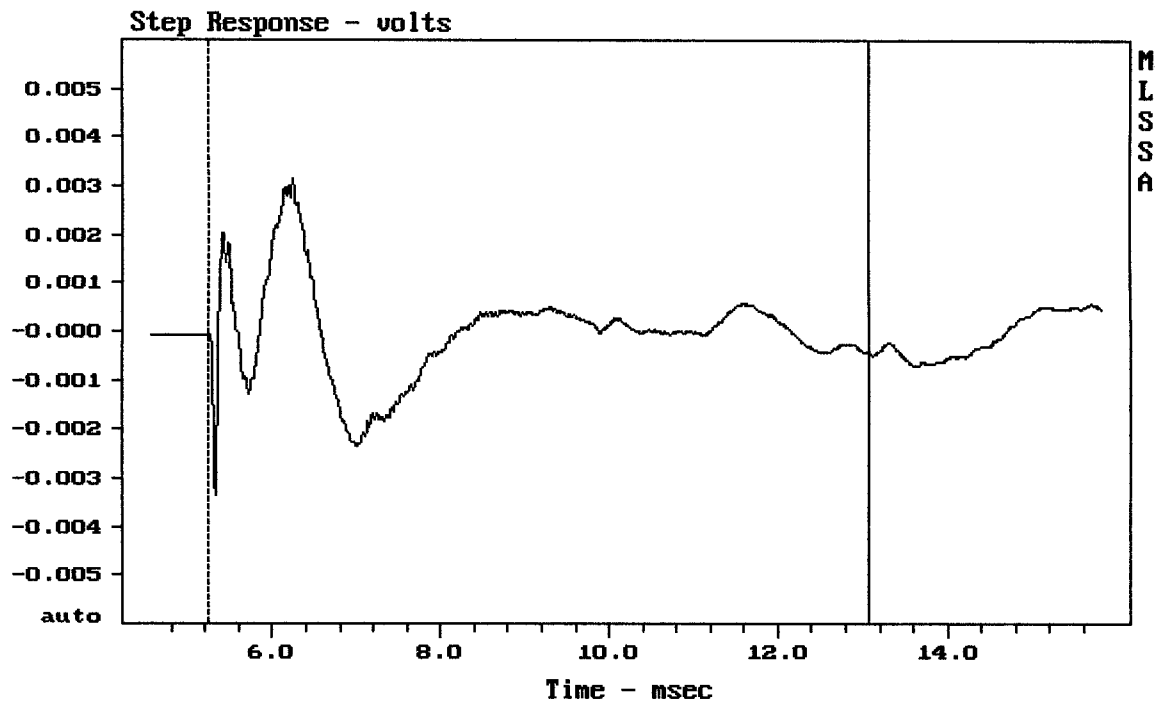
---

Level (244:18499 Hz) = 106.31 dB SPL/watt (8 ohms, @1.60 meters)

---

RCF ACUSTICA H1315

MLSSA: Frequency Domain

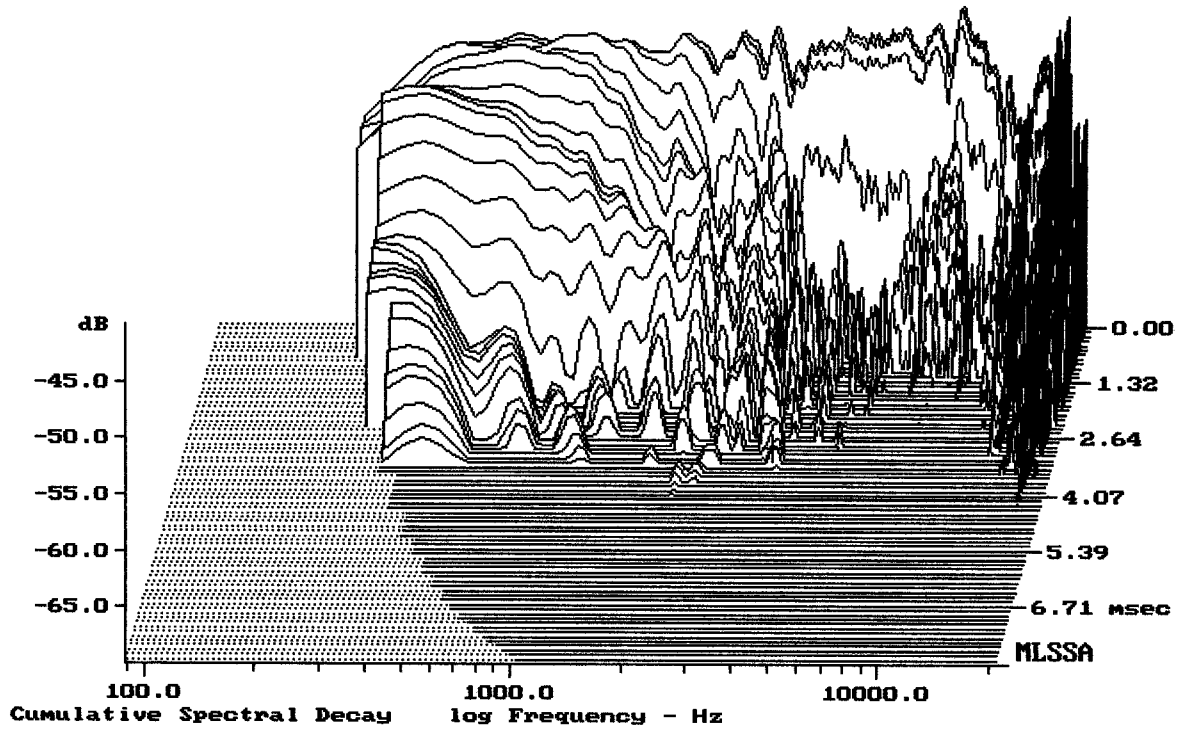


---

mean: -2.722e-005, rms: 0.0009774, std: 0.000977, max: 0.003162, min: -0.00334

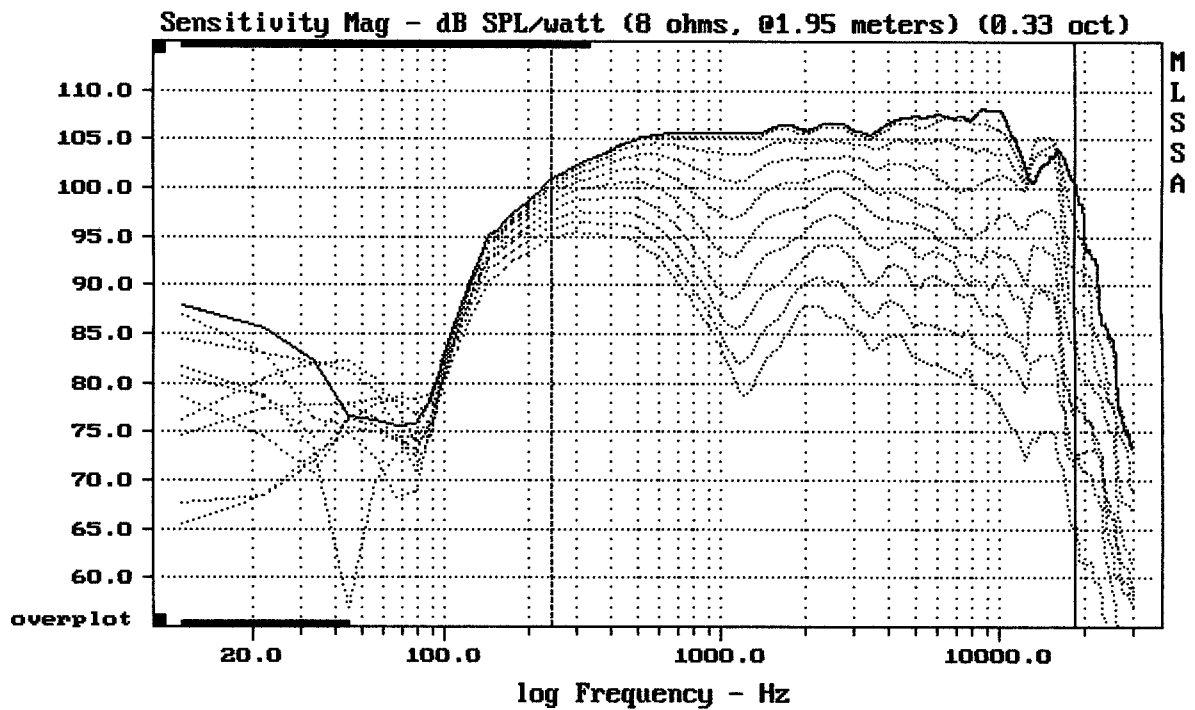
---

RCF ACUSTICA H1315

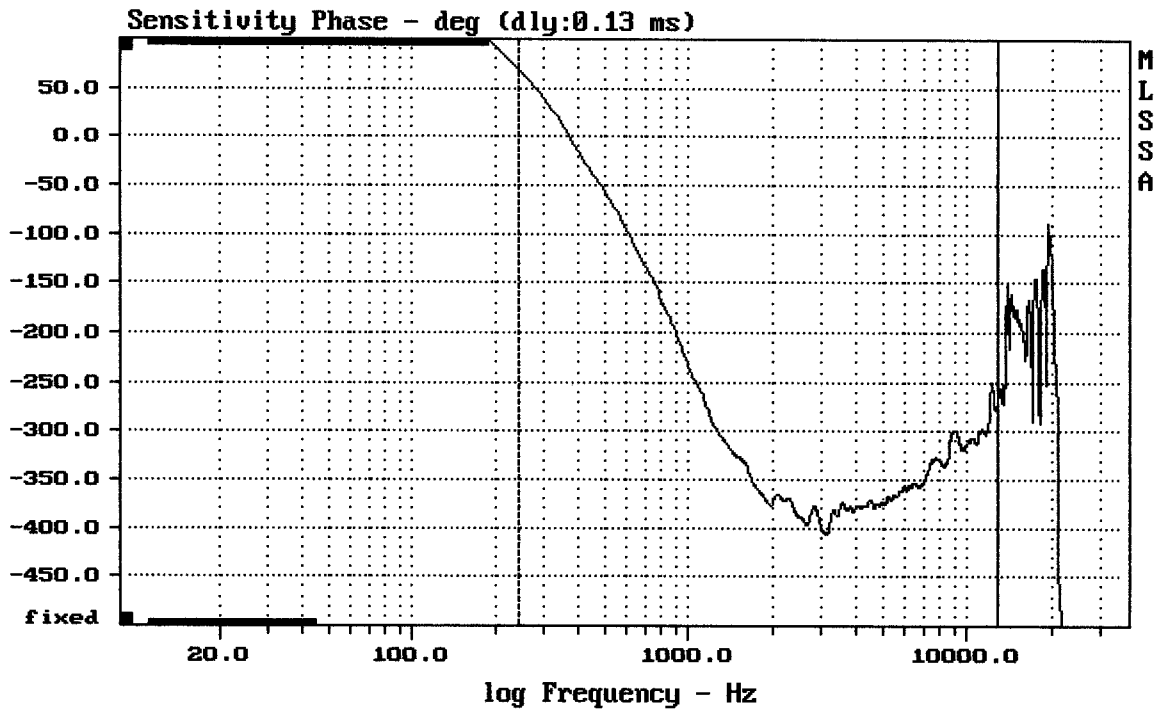


-68.61 dB, 3640 Hz (82), 3.300 msec (31)

DTTO



Overlay Compare: dev= +21/-9, std= 4.9, avg= -27



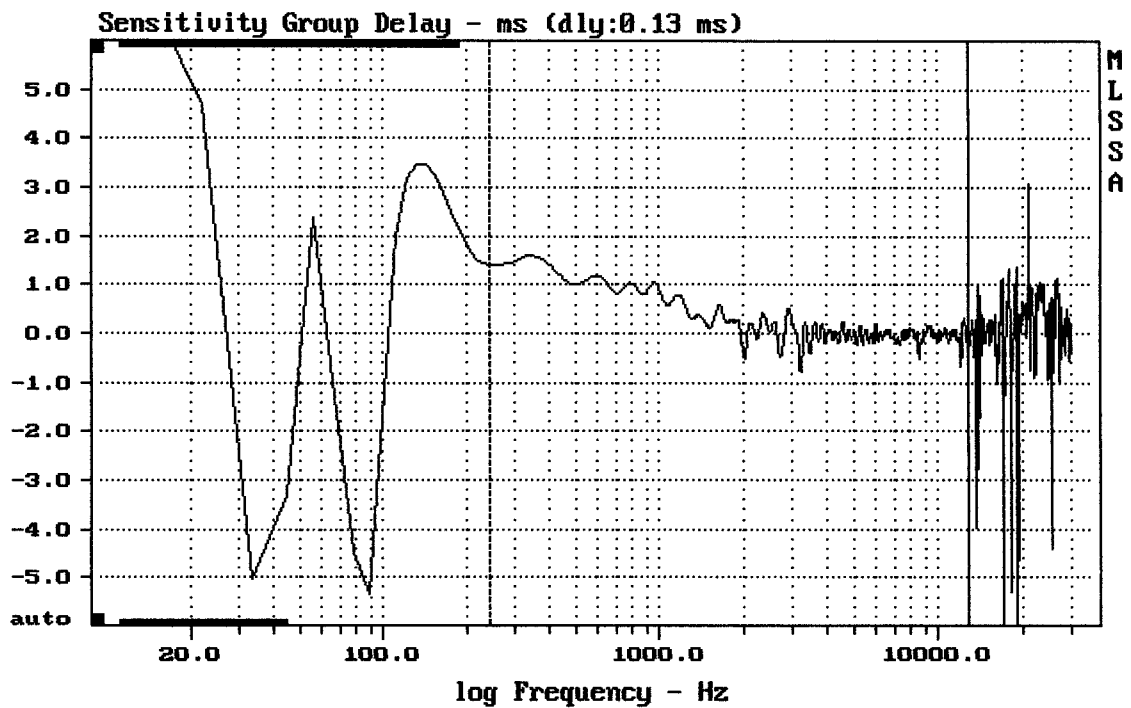
---

mean: -322.4, rms: 330.1, std: 71.08, max: 68.65, min: -405.9

---

RCF ACUSTICA H1315

MLSSA: Frequency Domain

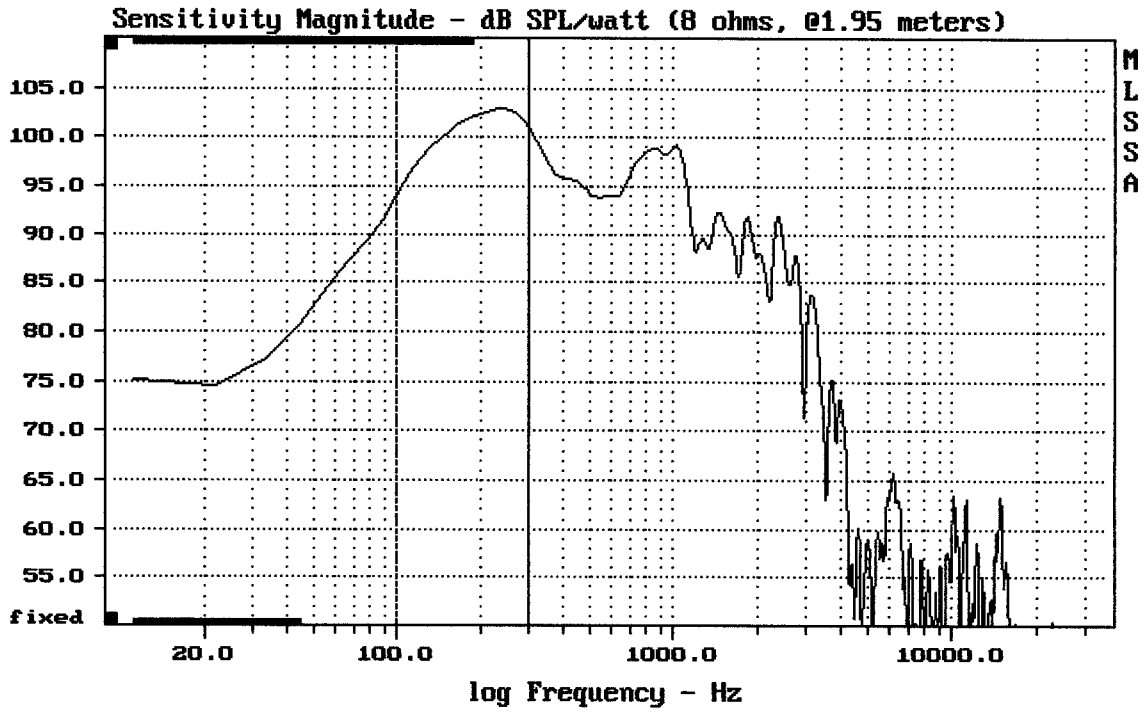


---

mean: 0.07634, rms: 0.3462, std: 0.3377, max: 1.587, min: -0.7725

---

RCF ACUSTICA H1315



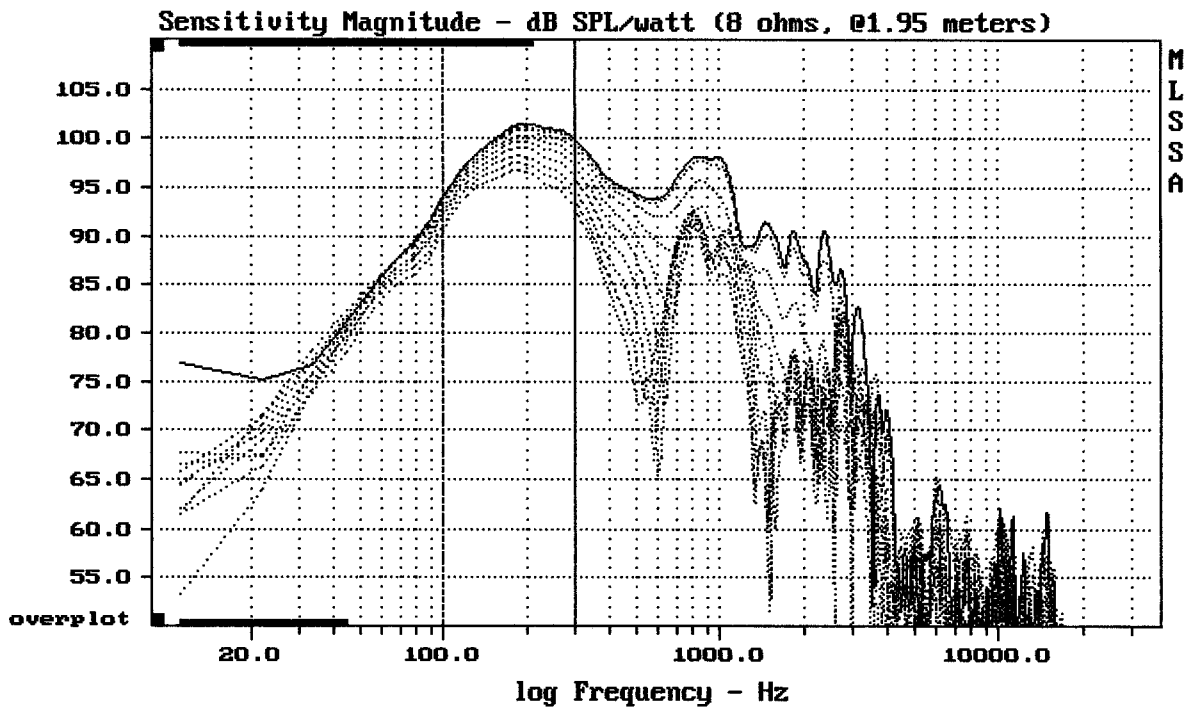
---

Level (100:300 Hz) = 100.90 dB SPL/watt (8 ohms, @1.95 meters)

---

RCF ACUSTICA H1315

MLSSA: Frequency Domain

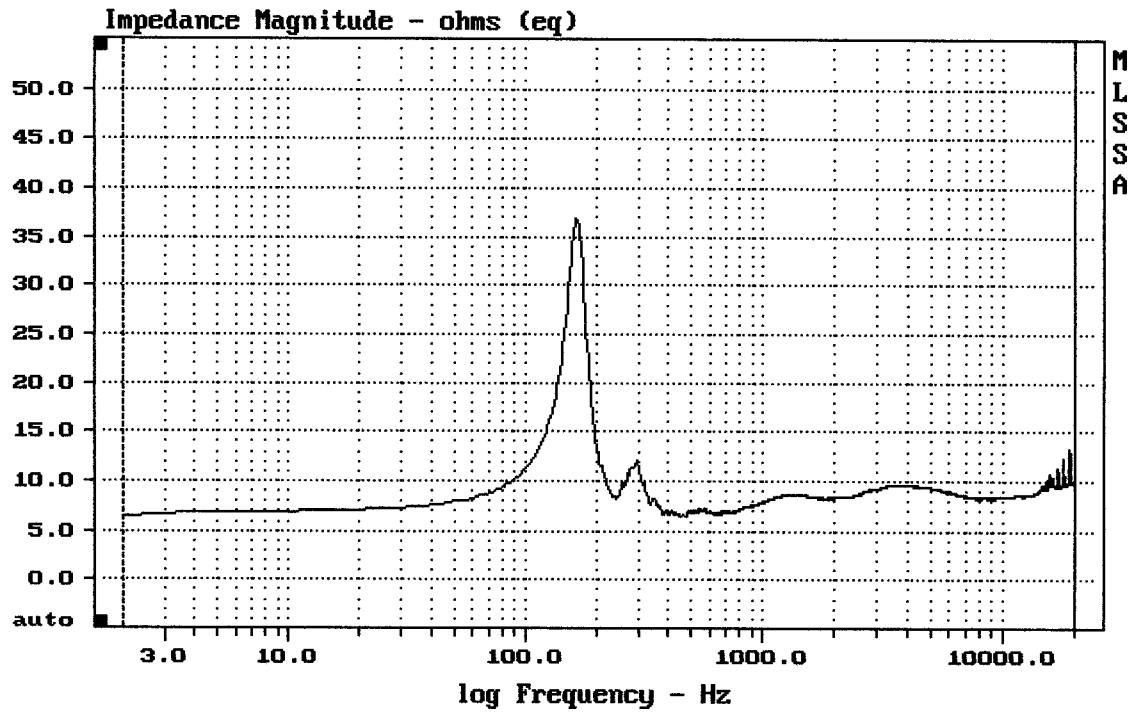


---

Overlay Compare: dev= +1.7/-2.1, std= 1.2, avg= -4.9

---

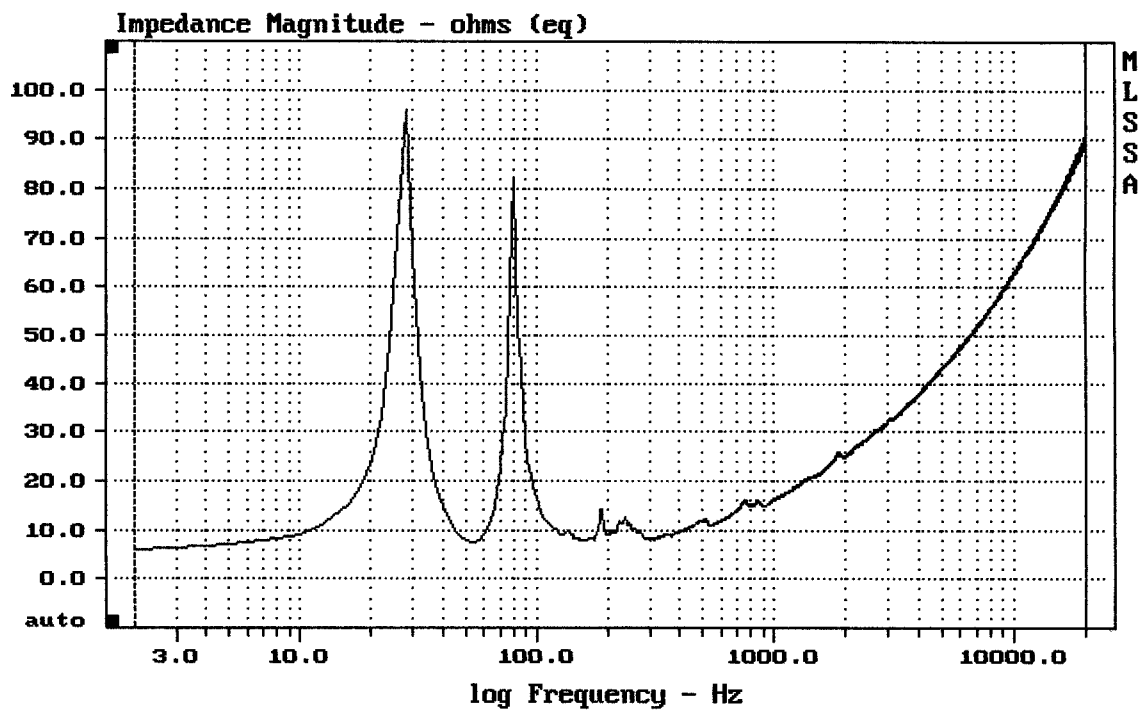
RCF ACUSTICA H1315



mean: 9.082, rms: 9.18, std: 1.337, max: 36.9, min: 6.487

RCF ACUSTICA H1315

MLSSA: Frequency Domain



mean: 58.74, rms: 62.69, std: 21.88, max: 95.78, min: 6.138

RCF ACUSTICA H1315