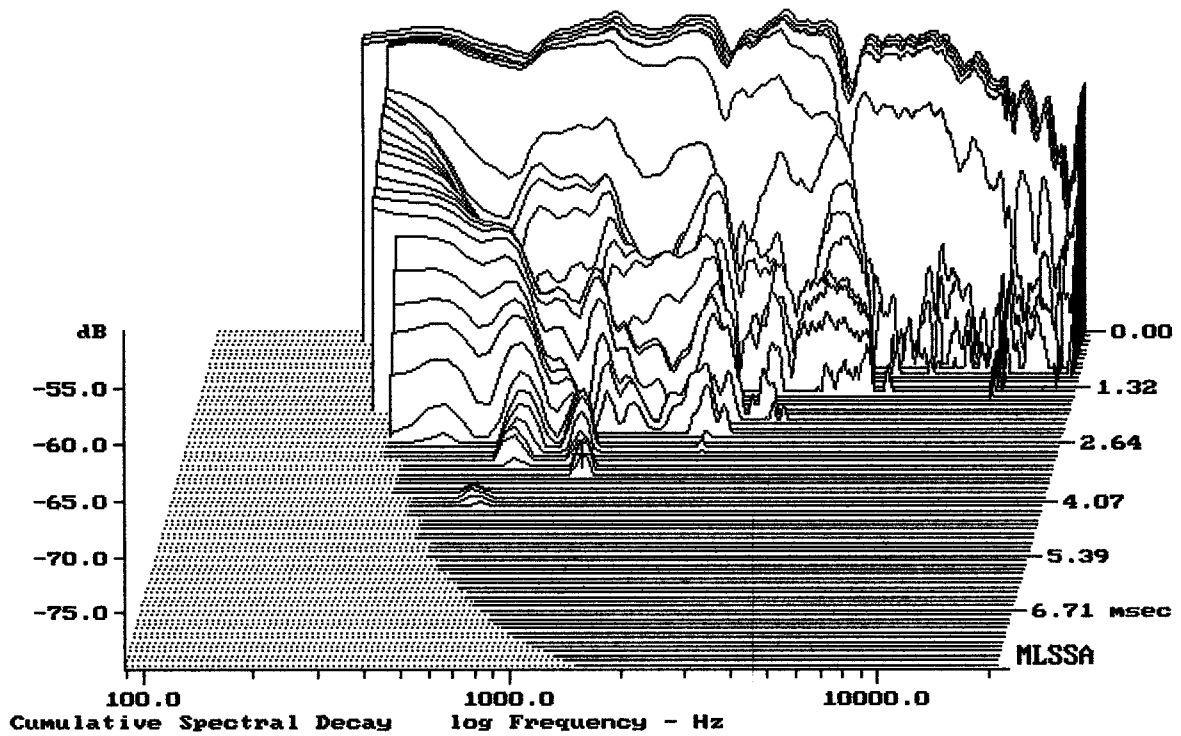


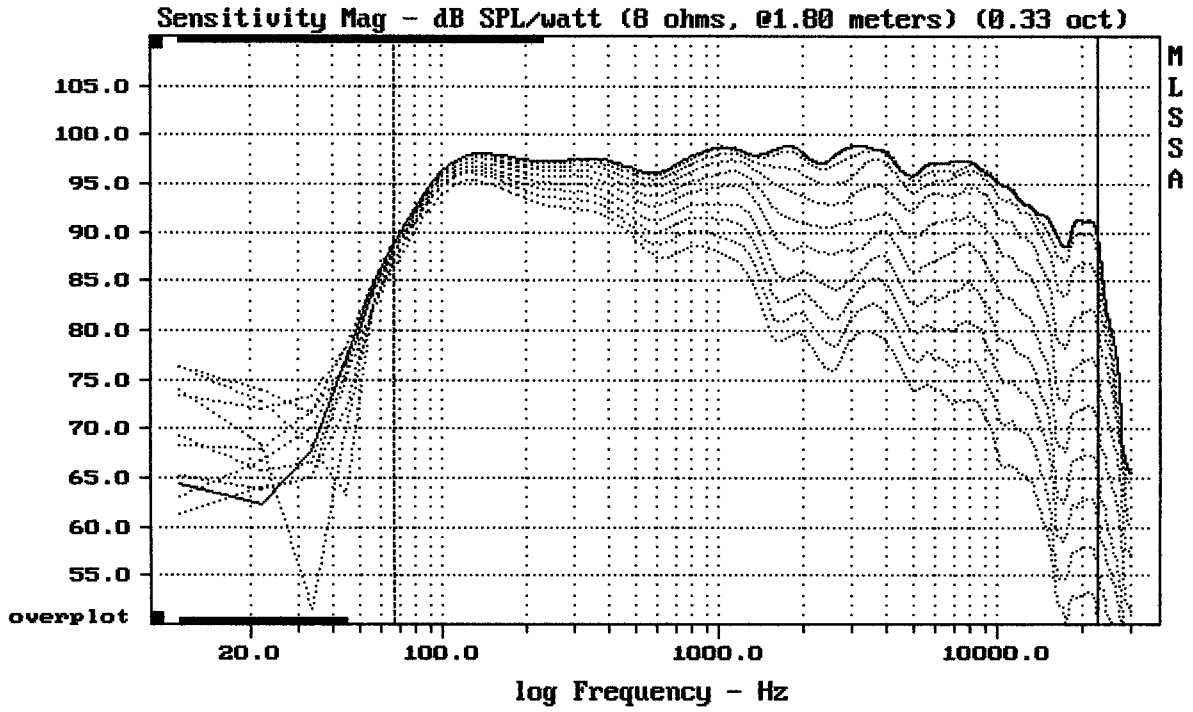
mean: 96.00, rms: 96.35, std: 2.20, max: 100.04, min: 88.59

RCF ART 312-A

MLSSA: Frequency Domain



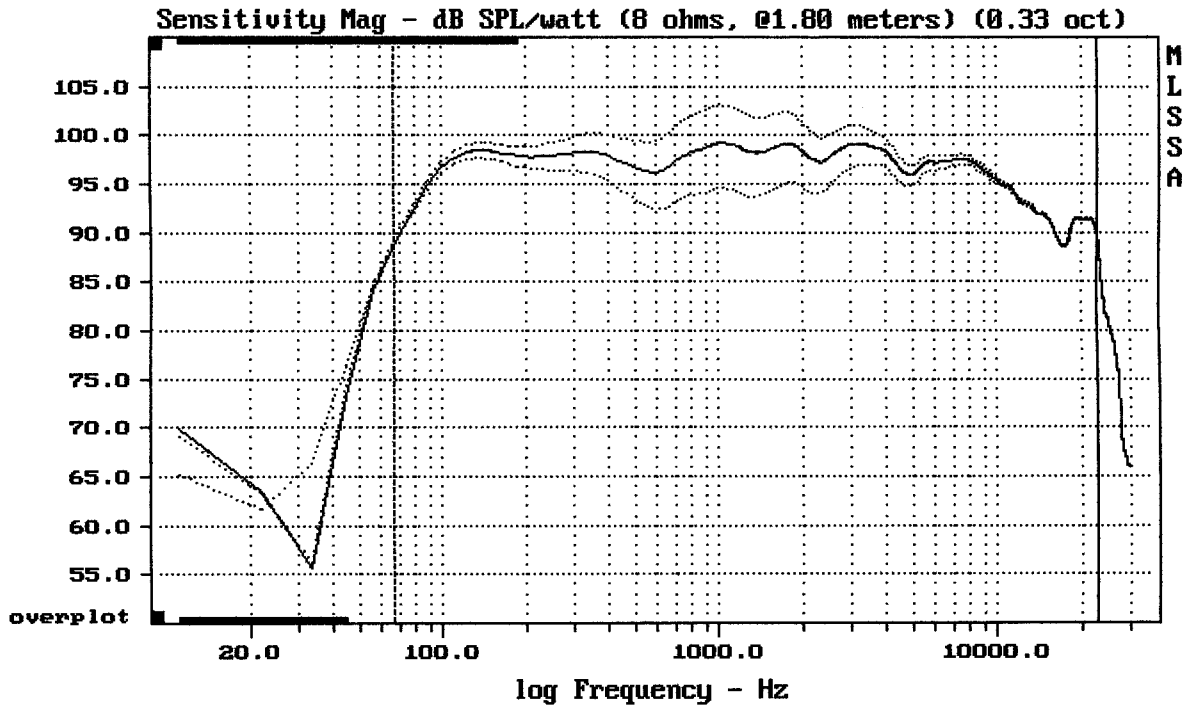
-78.20 dB, 1110 Hz (25), 3.410 msec (32)



Overlay Compare: dev= +26/-11, std= 8.3, avg= -28

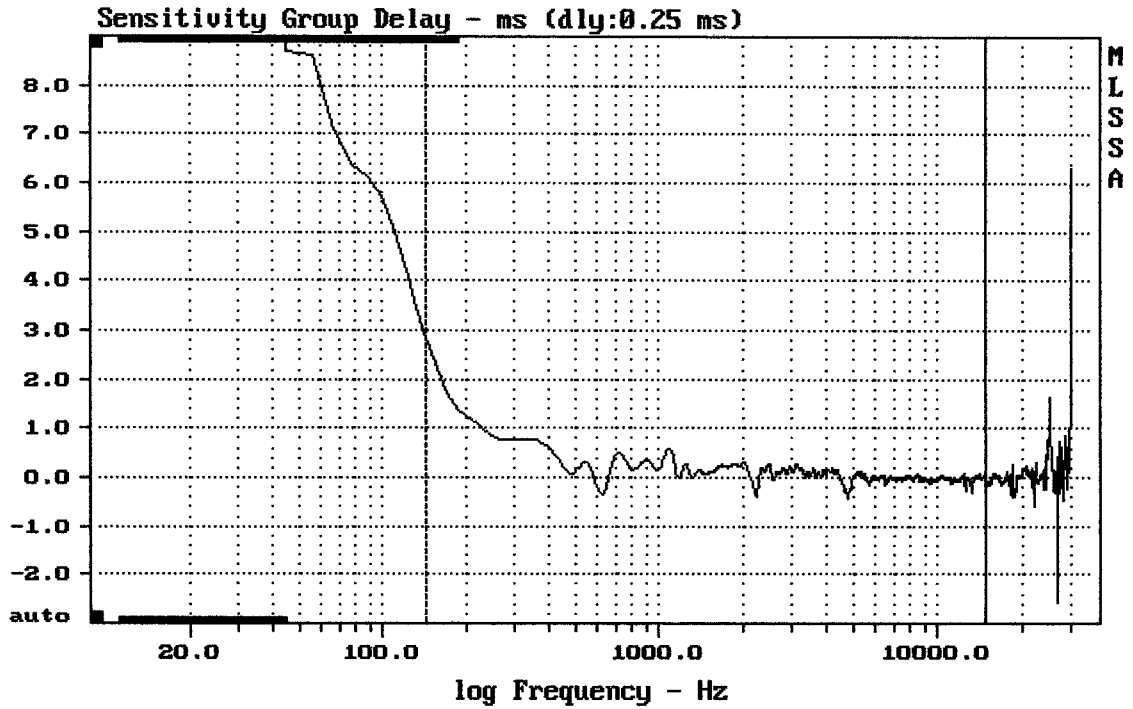
RCF ART 312-A

MLSSA: Frequency Domain



mean: 95.74, rms: 96.63, std: 3.38, max: 103.11, min: 88.77

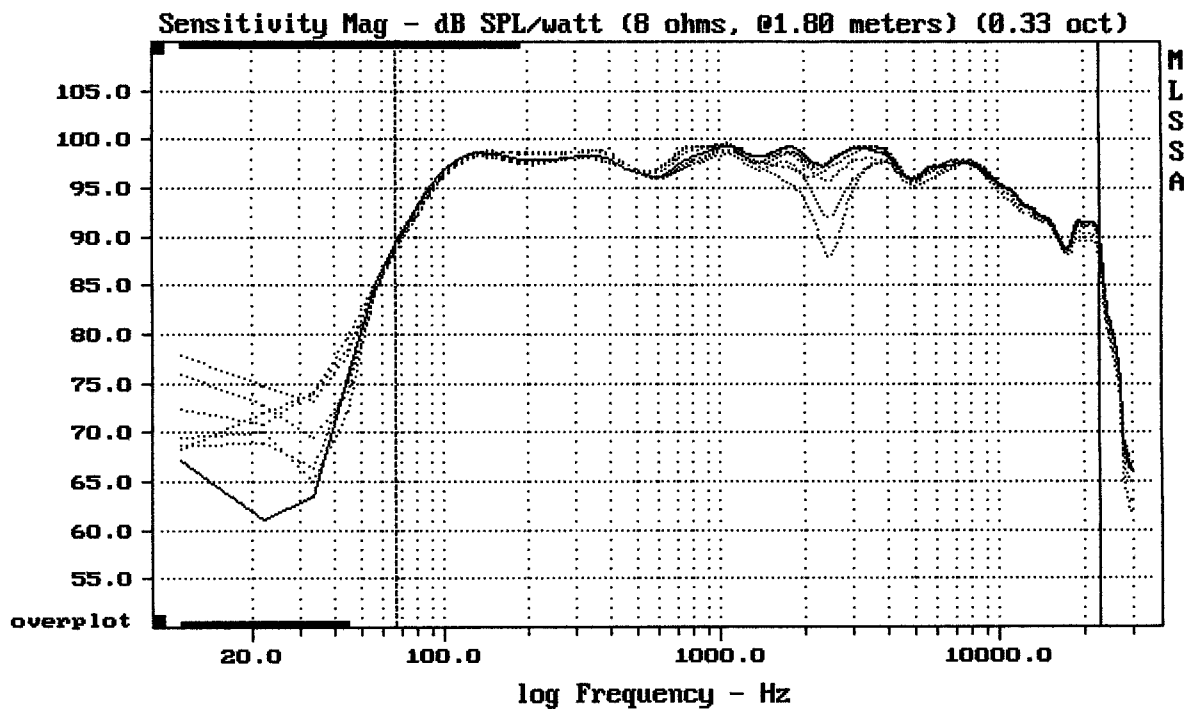
RCF ART 312-A



mean: 0.03556, rms: 0.2077, std: 0.2046, max: 2.851, min: -0.4233

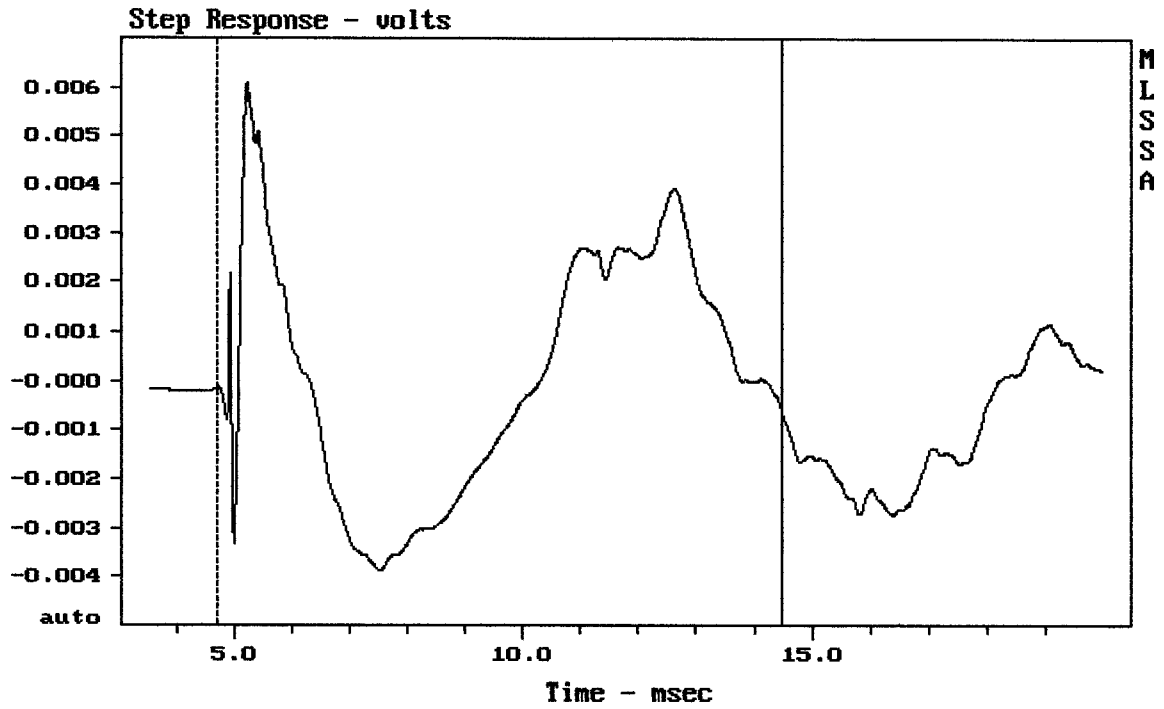
RCF ART 312-A

MLSSA: Frequency Domain



mean: 93.66, rms: 94.26, std: 2.84, max: 99.45, min: 87.17

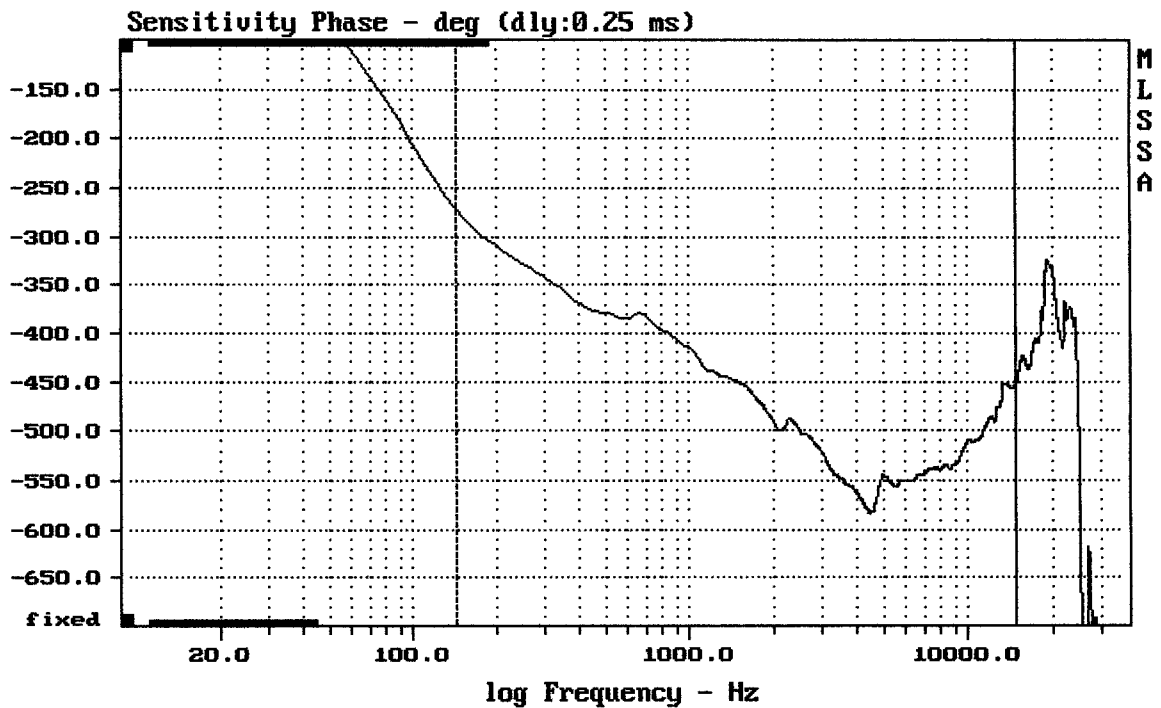
RCF ART 312-A



mean: 0.0001277, rms: 0.002463, std: 0.002459, max: 0.006117, min: -0.003886

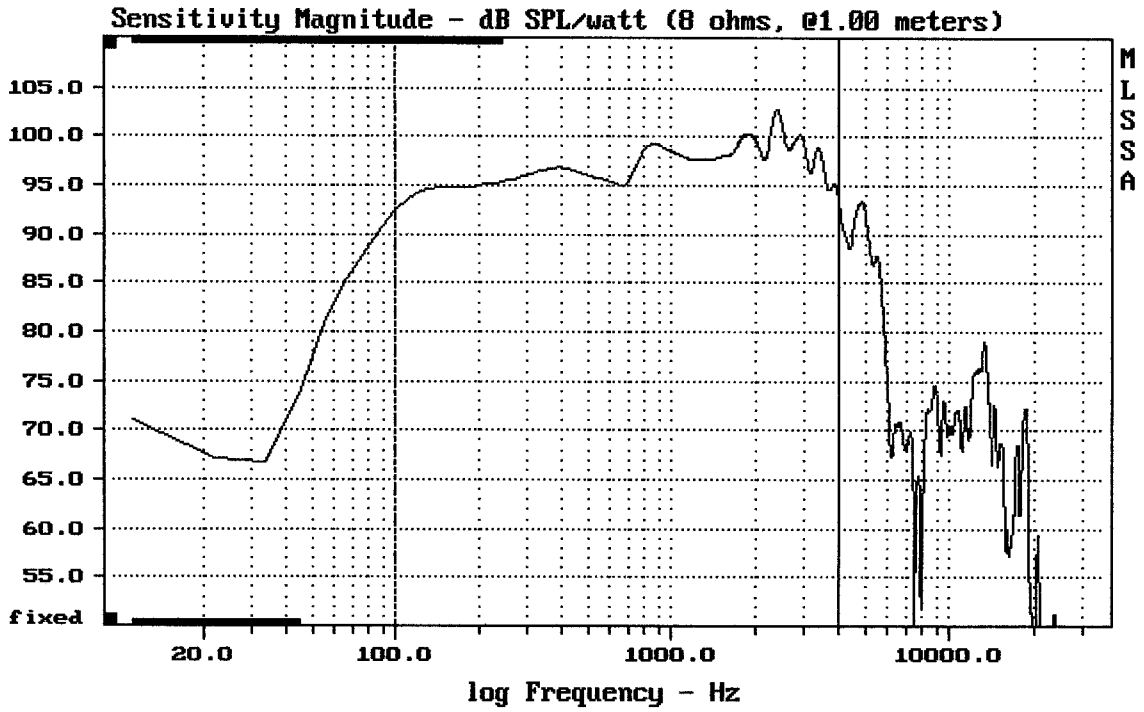
RCF ART 312-A

MLSSA: Time Domain



mean: -504.4, rms: 506.9, std: 49.95, max: -272.4, min: -582.8

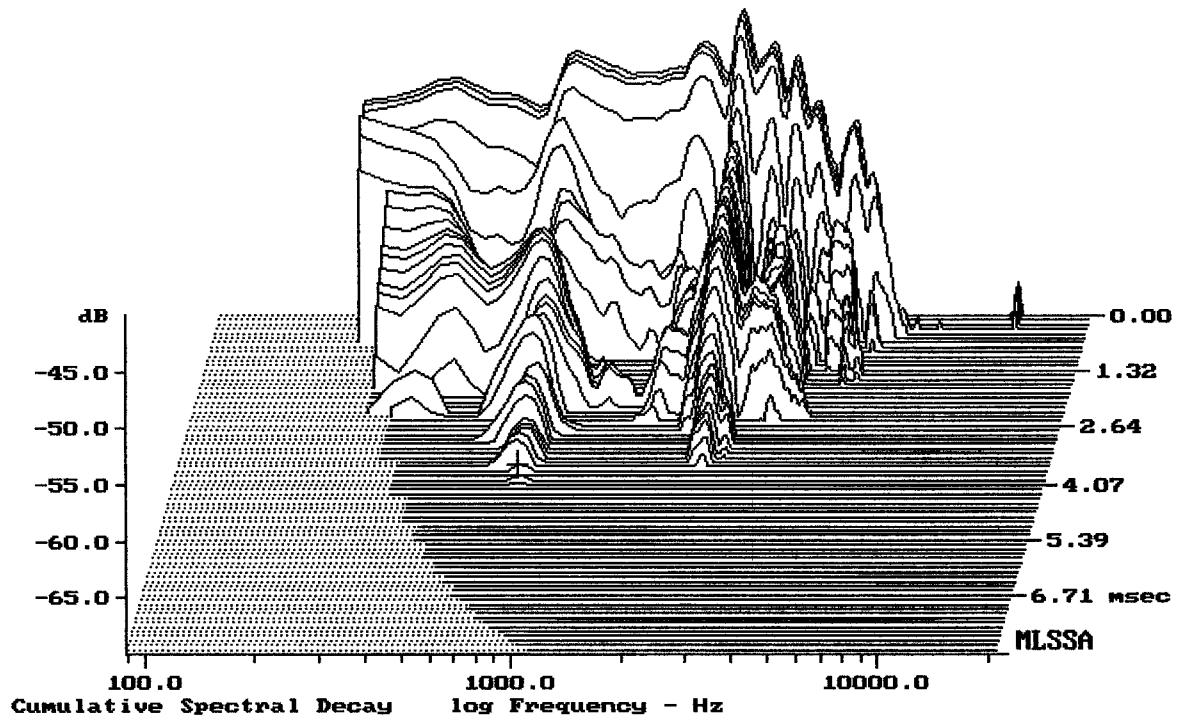
RCF ART 312-A



Level (100:3995 Hz) = 97.27 dB SPL/watt (8 ohms, @1.00 meters)

12" RCF ART 312-A

MLSSA: Frequency Domain



-69.42 dB, 755 Hz (17), 3.740 msec (35)

MLSSA SPO 4.0D #960903-3057-3075

Measured Data

QC Limits

Line	Parameter	Value	Units
1	RMSE-free	0.43	Ohms
2	Fs	43.81	Hz
3	Re	5.28	Ohms[dc]
4	Res	111.72	Ohms
5	Qms	7.36	
6	Qes	0.35	
7	Qts	0.33	
8	L1	0.80	mH
9	L2	1.25	mH
10	R2	4.05	Ohms
11	RMSE-load	0.70	Ohms
12	Vas(Sd)	132.46	liters
13	Mms	39.44	grams
14	Cms	335	μ M/Newton
15	B1	12.84	Tesla-M
16	SPLref(Sd)	96.9	dB[Re]
17	Rub-index	0.00	

Method: Mass-loaded (40.00 grams)

Area (Sd): 530.93 sq cm

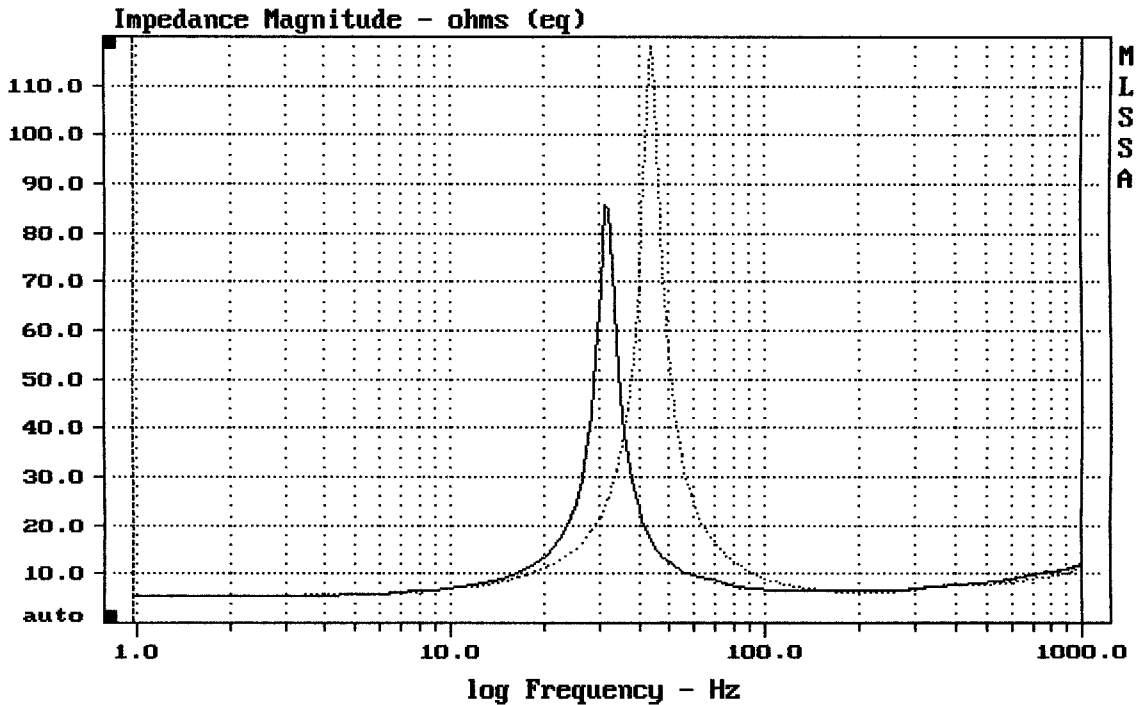
DCR mode: Measure (-0.06 ohms)

QC file: CLOSED

Analysis successful. Shift in Fs = -27.6% (-20% to -50% is recommended).

12" RCF ART 312-A

MLSSA: Parameters



mean: 9.998, rms: 13.74, std: 9.429, max: 118.1, min: 5.328

DTTO

MLSSA: Frequency Domain