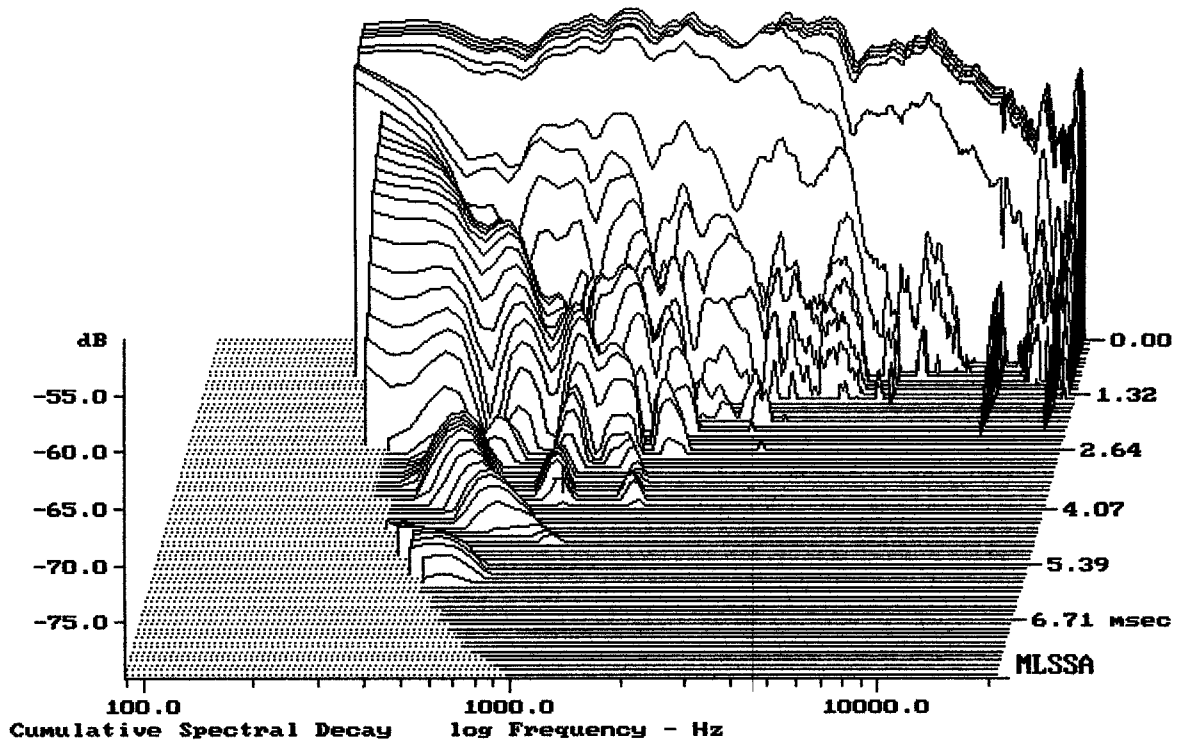


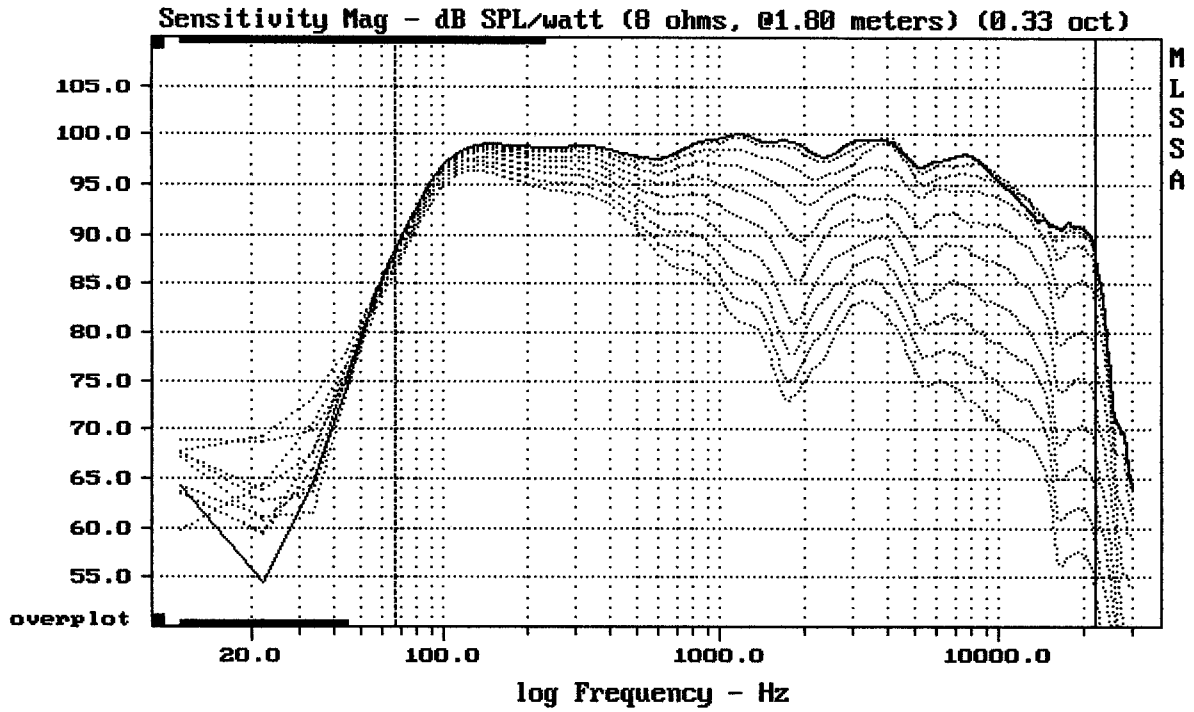
mean: 95.47, rms: 96.13, std: 2.95, max: 100.82, min: 86.62

RCF ART 315-A

MLSSA: Frequency Domain



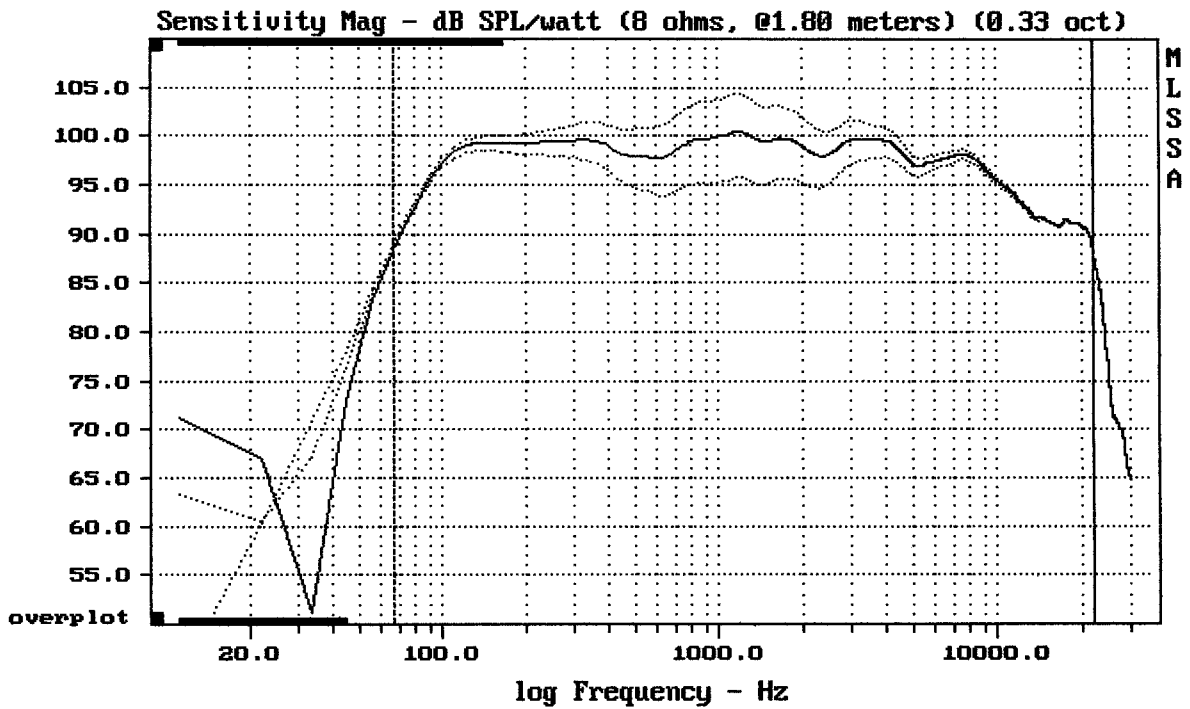
-78.09 dB, 1021 Hz (23), 3.850 msec (36)



Overlay Compare: dev= +23/-8.8, std= 6.5, avg= -25

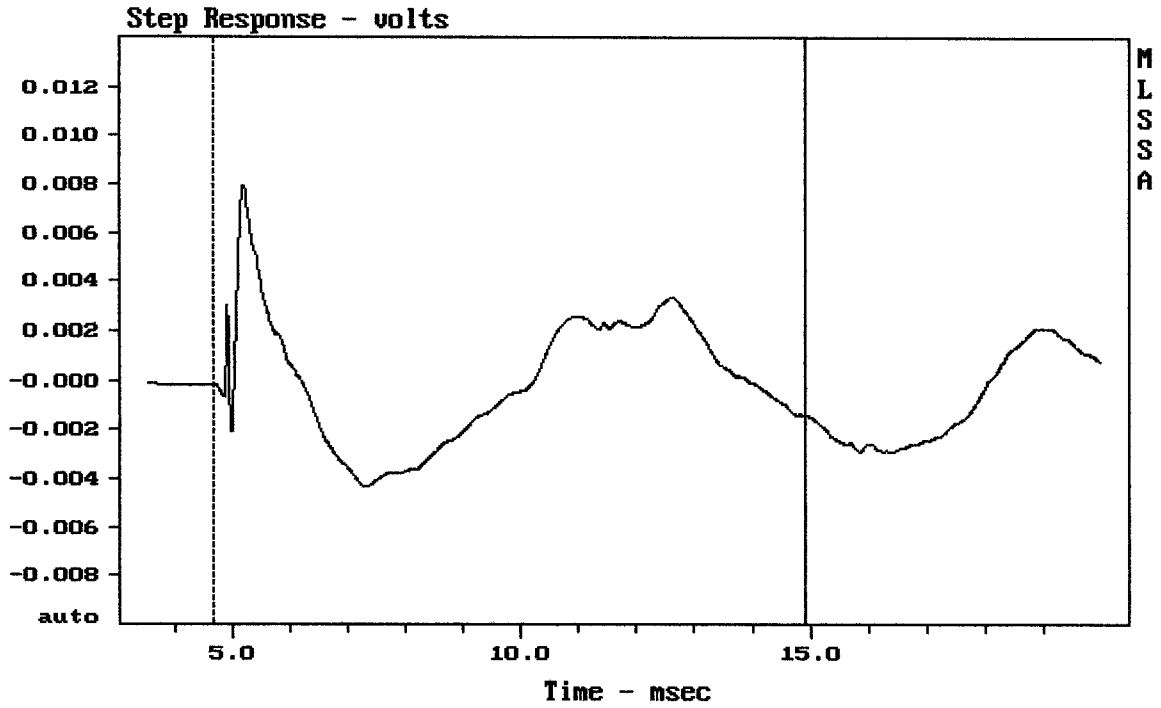
RCF ART 315-A

MLSSA: Frequency Domain



mean: 96.40, rms: 97.42, std: 3.60, max: 104.32, min: 88.62

RCF ART 315-A



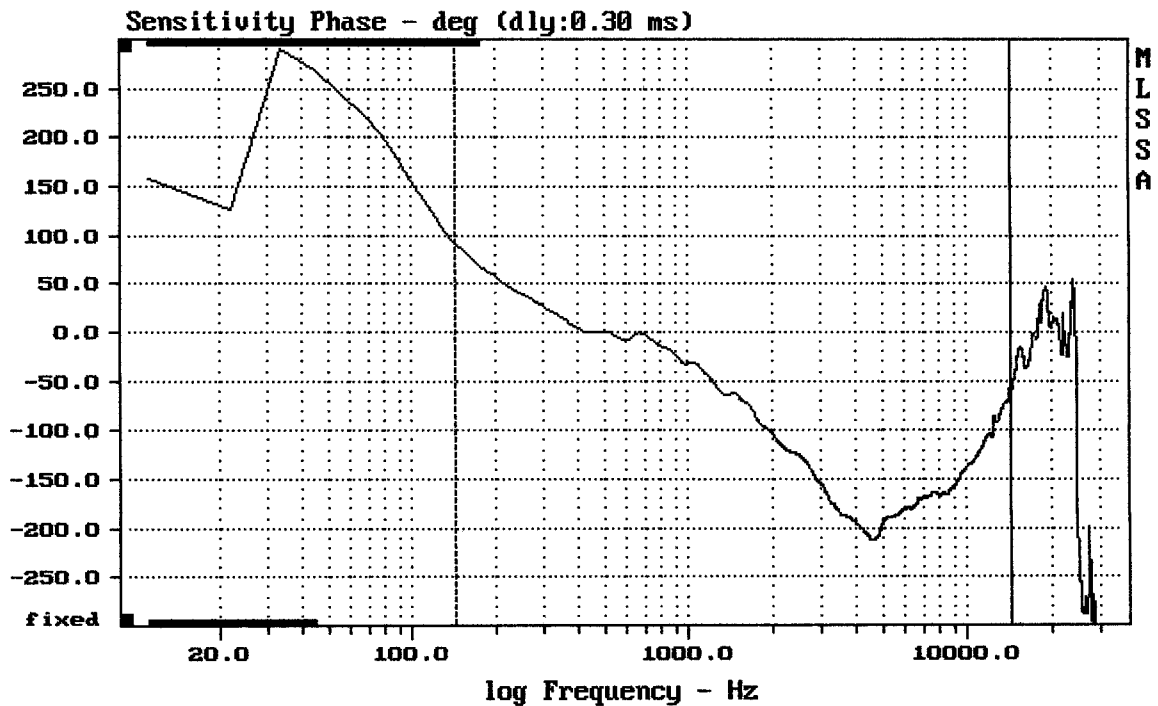
---

mean: 6.834e-006, rms: 0.002551, std: 0.002551, max: 0.007954, min: -0.004336

---

RCF ART 315-A

MLSSA: Time Domain

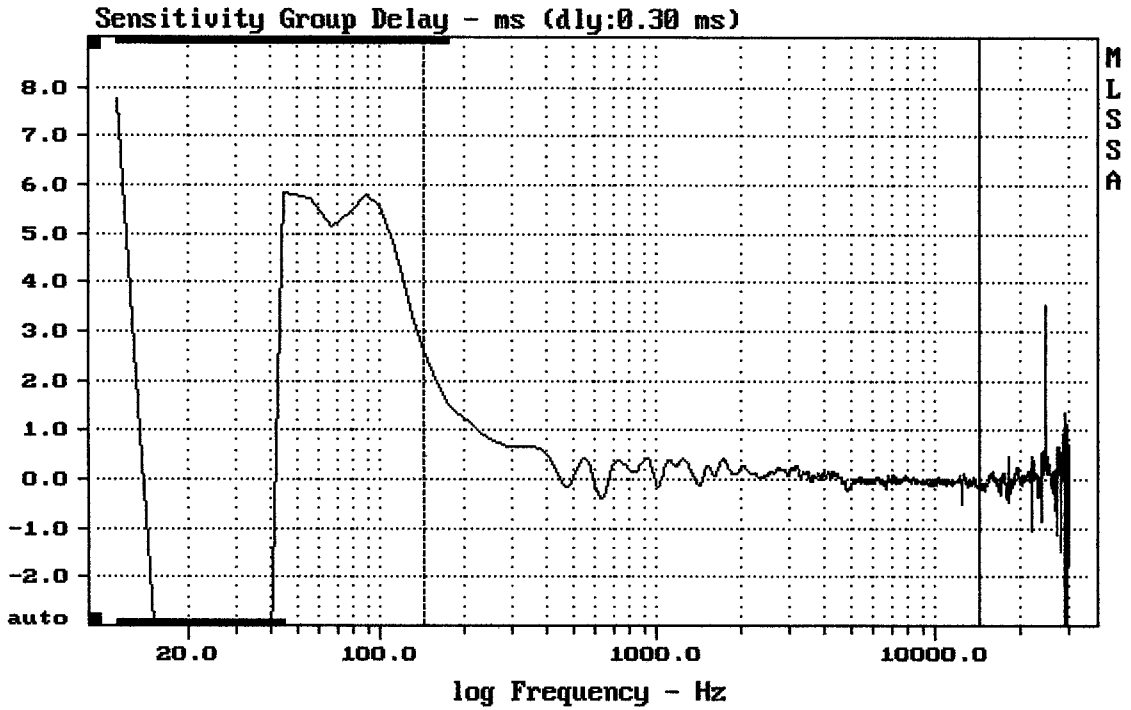


---

mean: -131, rms: 142.1, std: 55.06, max: 92.39, min: -213.2

---

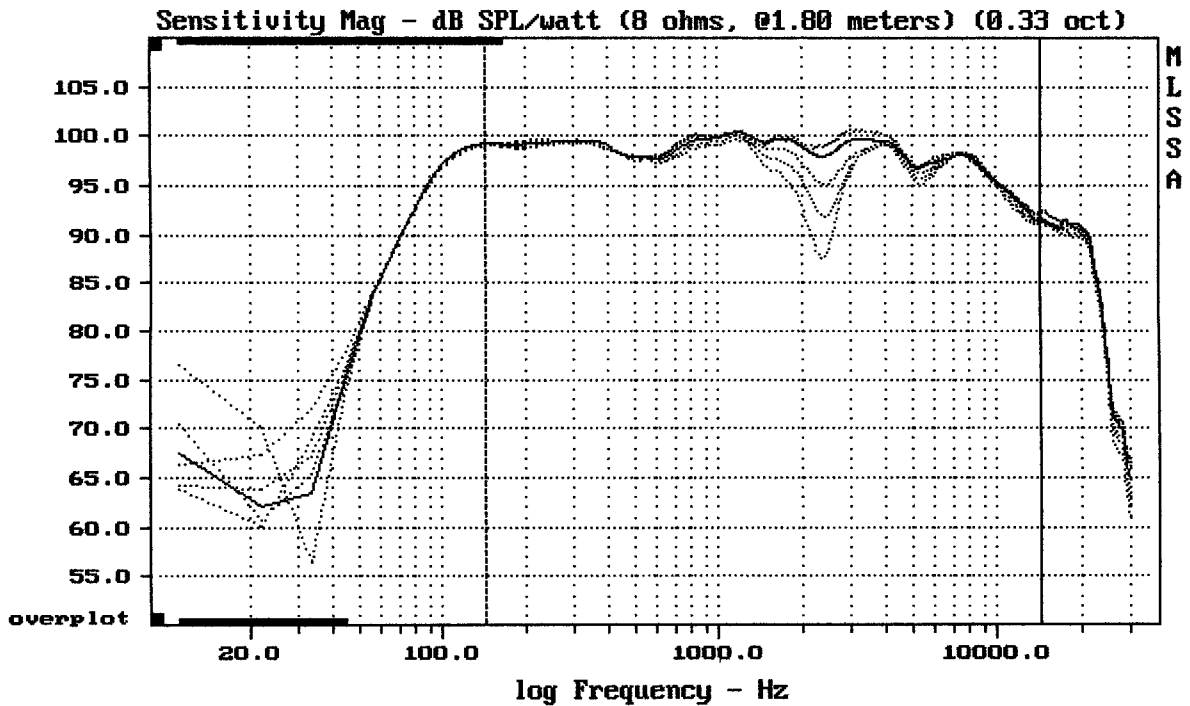
RCF ART 315-A



mean: 0.03056, rms: 0.1988, std: 0.1965, max: 2.604, min: -0.5134

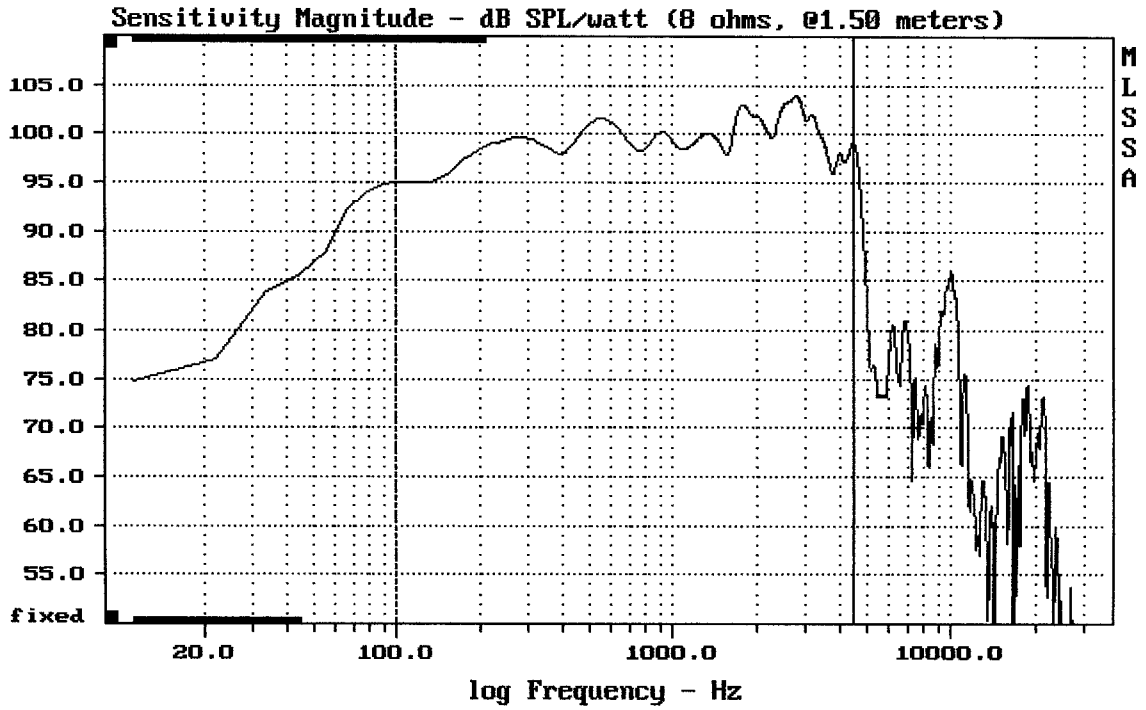
RCF ART 315-A

MLSSA: Frequency Domain



mean: 95.94, rms: 96.34, std: 2.36, max: 100.27, min: 87.50

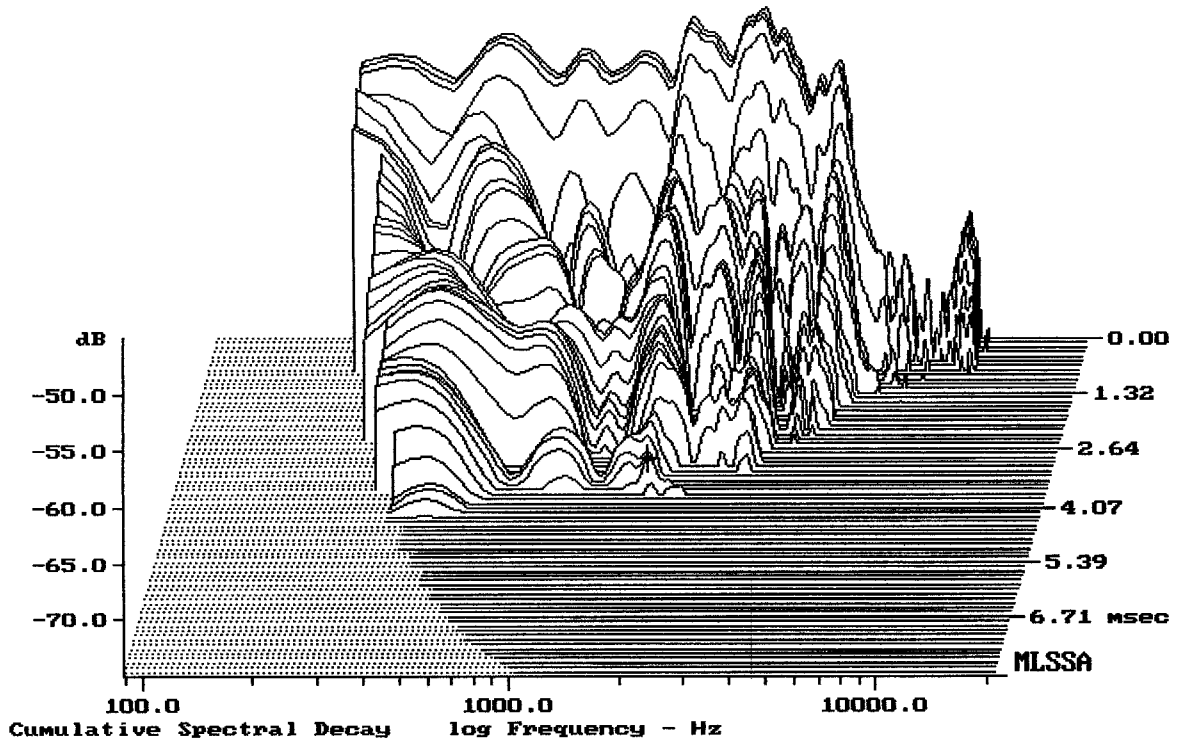
RCF ART 315-A



Level (100:4506 Hz) = 99.63 dB SPL/watt (8 ohms, @1.50 meters)

15" FROM RCF ART 315-A

MLSSA: Frequency Domain



-72.32 dB, 1731 Hz (39), 3.630 msec (34)

MLSSA SPO 4.0D #960903-3057-3075

Measured Data

QC Limits

Line	Parameter	Value	Units
1	RMSE-free	0.32	Ohms
2	Fs	39.30	Hz
3	Re	5.22	Ohms[dc]
4	Res	113.55	Ohms
5	Qms	9.06	
6	Qes	0.42	
7	Qts	0.40	
8	L1	0.67	mH
9	L2	1.30	mH
10	R2	4.73	Ohms
11	RMSE-load	0.56	Ohms
12	Vas(Sd)	276.74	liters
13	Mms	60.88	grams
14	Cms	269	$\mu\text{M}/\text{Newton}$
15	Bl	13.73	Tesla-M
16	SPLref(Sd)	97.9	dB[Re]
17	Rub-index	0.01	

Method: Mass-loaded (80.00 grams)

Area (Sd): 855.30 sq cm

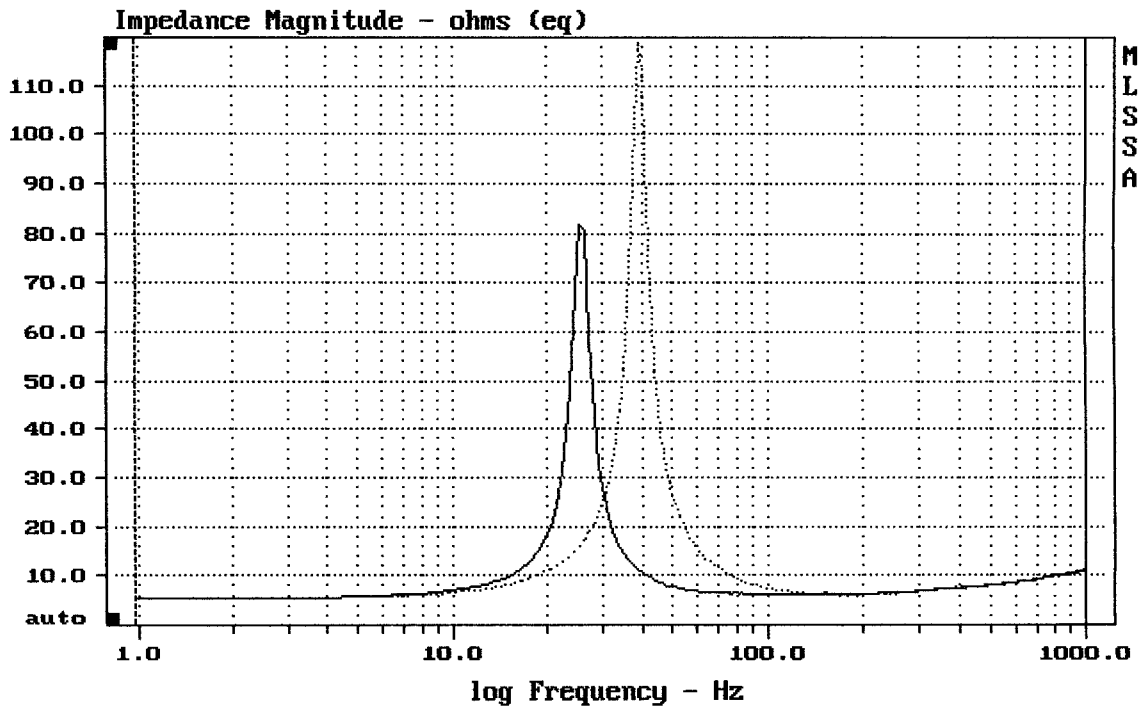
DCR mode: Measure (-0.07 ohms)

QC file: CLOSED

Analysis successful. Shift in Fs = -34.6% (-20% to -50% is recommended).

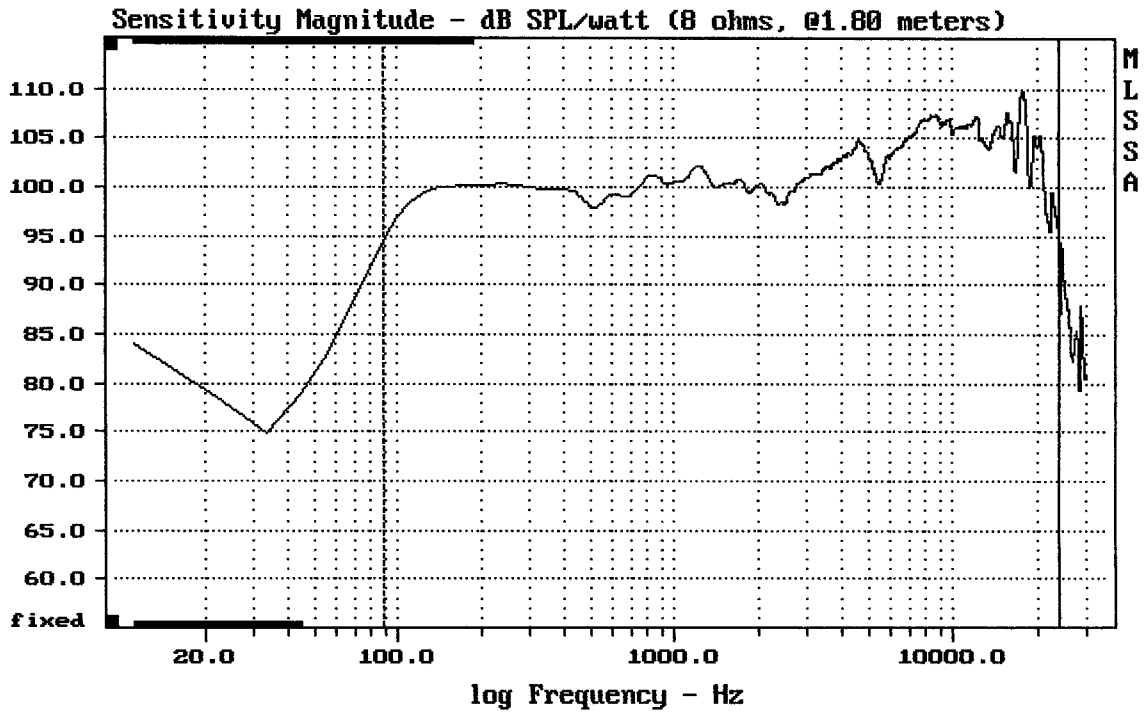
15" FROM RCF ART 315-A

MLSSA: Parameters



mean: 9.57, rms: 12.65, std: 8.272, max: 118.7, min: 5.265

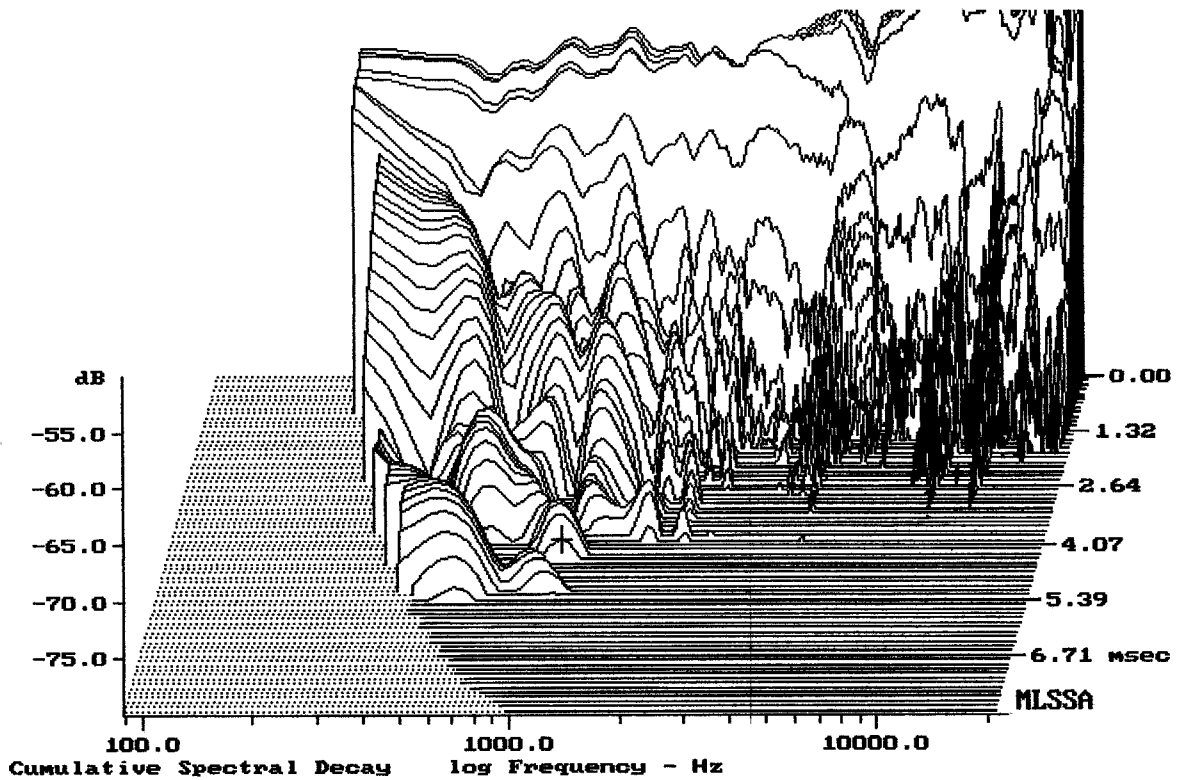
MLSSA: Frequency Domain



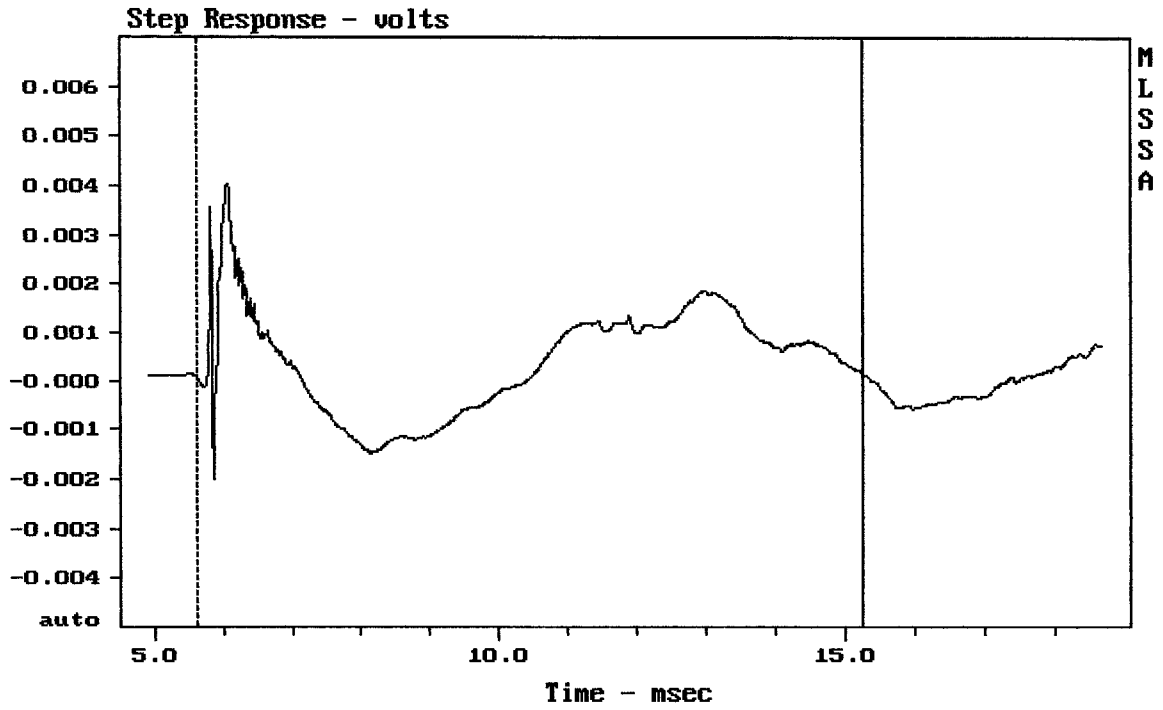
mean: 104.11, rms: 104.60, std: 2.60, max: 109.81, min: 94.15

RCF ART 315-A + ND1410 "2010" MYLAR

MLSSA: Frequency Domain



-78.29 dB, 1065 Hz (24), 4.400 msec (41)



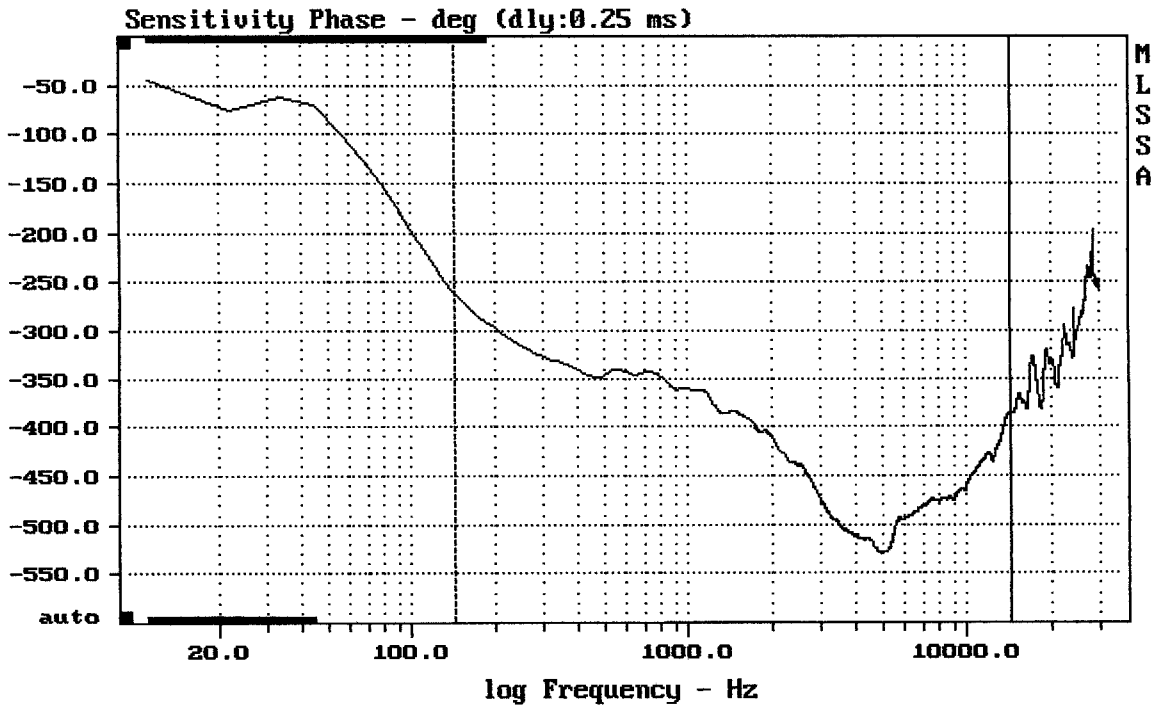
---

mean: 0.0004152, rms: 0.001151, std: 0.001074, max: 0.004029, min: -0.001981

---

RCF ART 315-A + ND1410 "2010" MYLAR

MLSSA: Time Domain



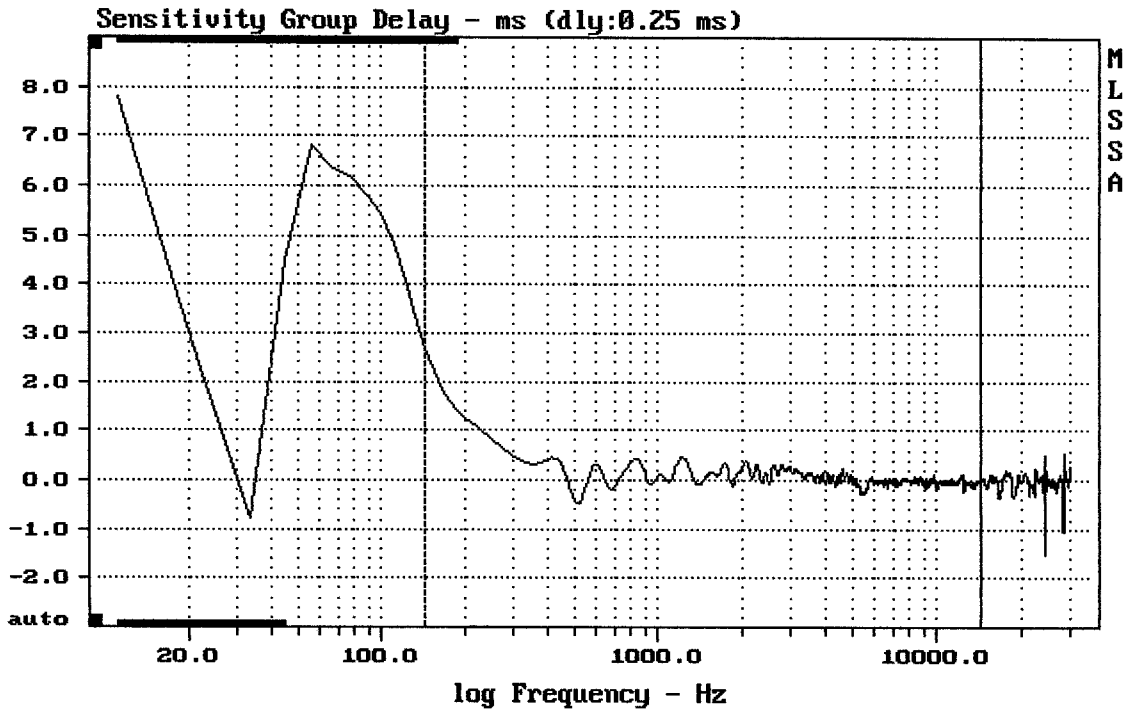
---

CURSOR: y = -385.392 x = 14293.3234 (1288)

---

RCF ART 315-A + ND1410 "2010" MYLAR





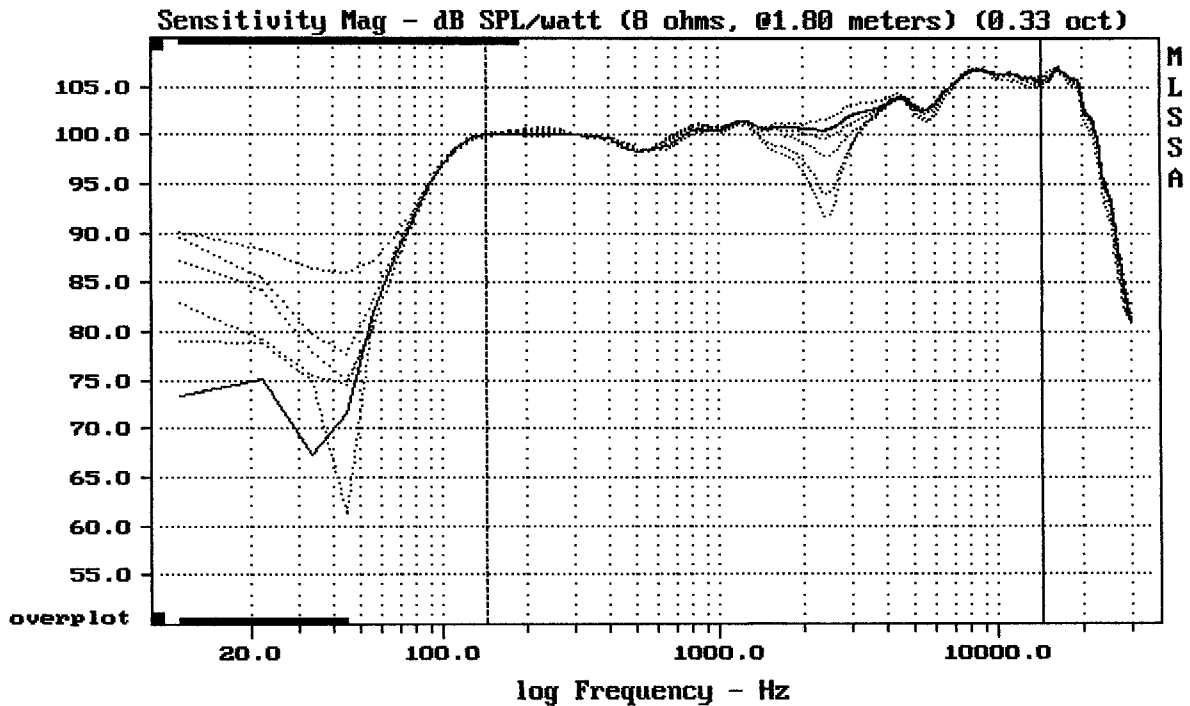
---

mean: 0.02553, rms: 0.1944, std: 0.1927, max: 2.698, min: -0.479

---

RCF ART 315-A + ND1410 "2010" MYLAR

MLSSA: Frequency Domain

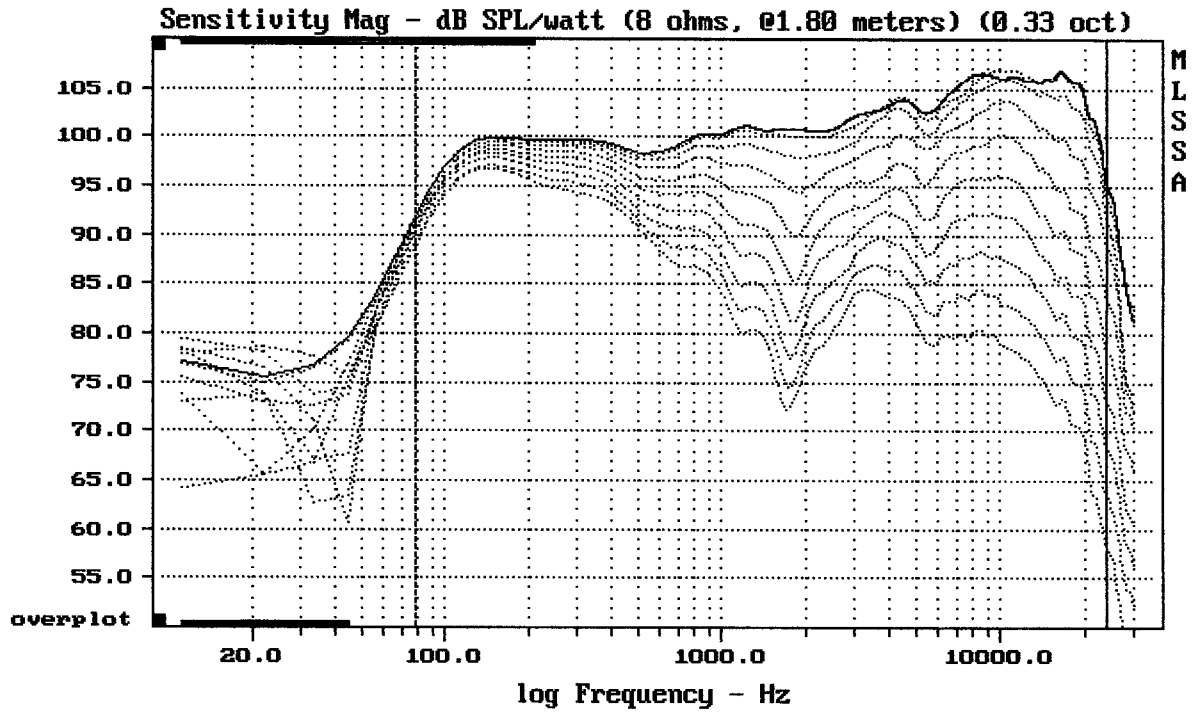


---

mean: 103.83, rms: 104.23, std: 2.33, max: 106.85, min: 91.60

---

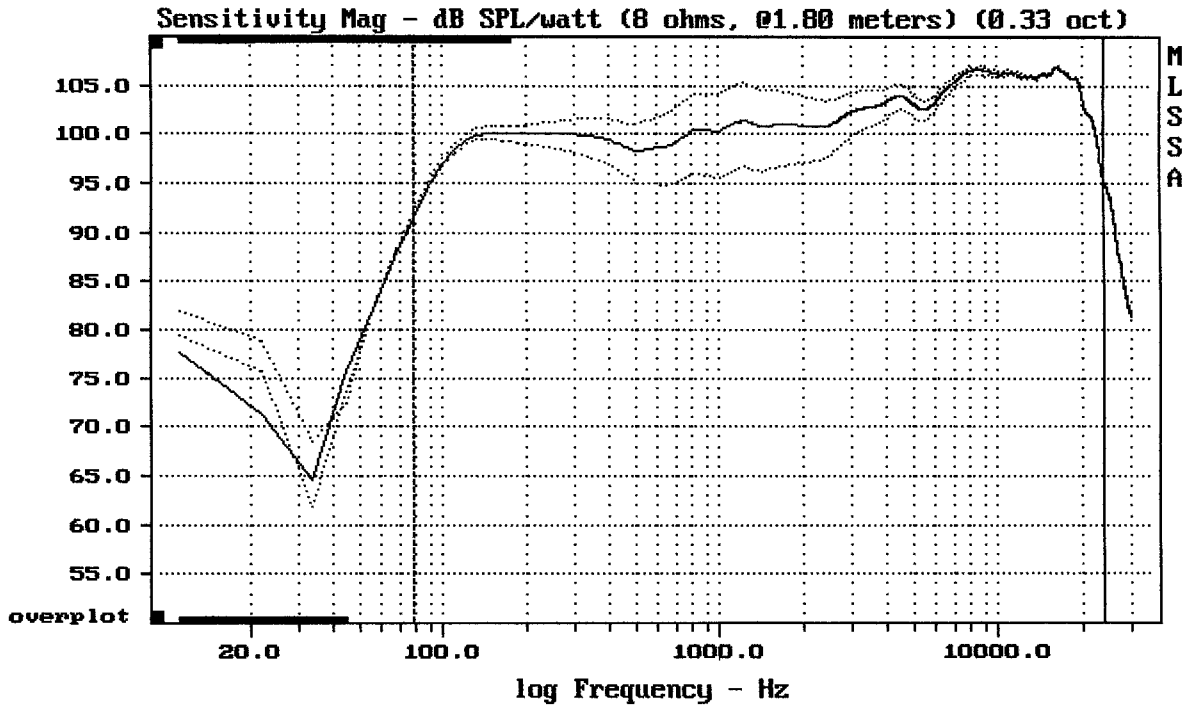
RCF ART 315-A + ND1410 "2010" MYLAR



Overlay Compare: dev= +26/-9.8, std= 7, avg= -29

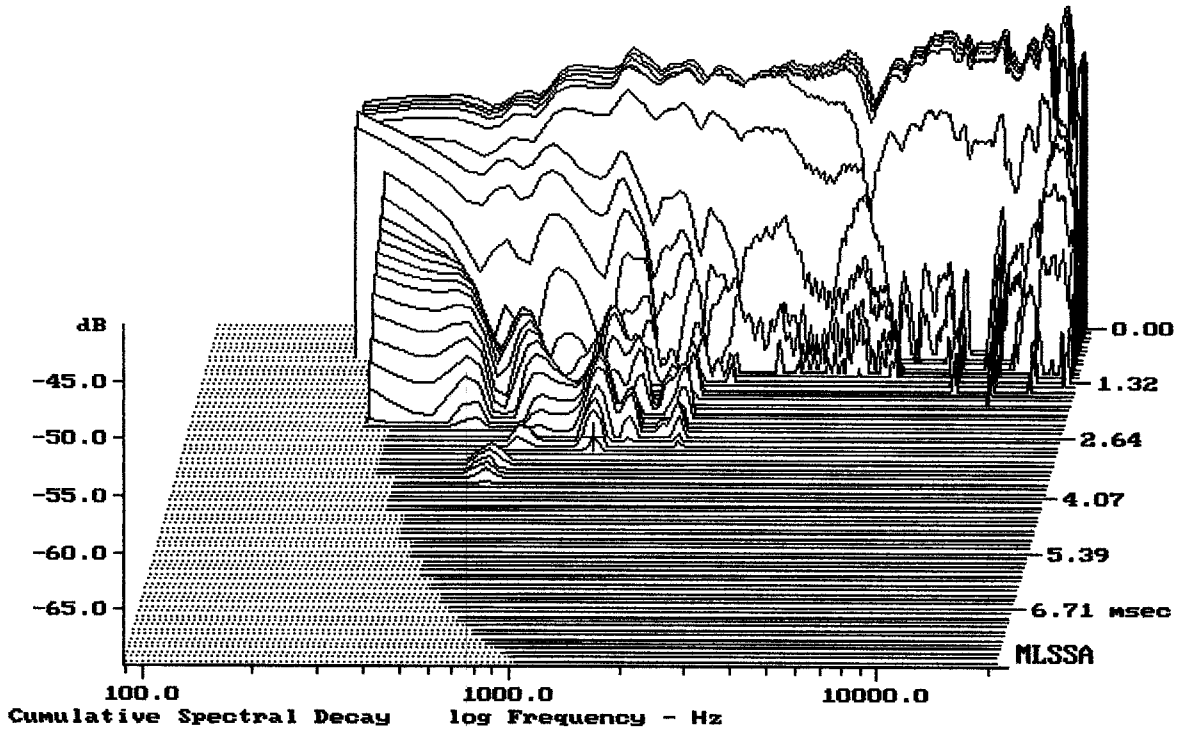
RCF ART 315-A + ND1410 "2010" MYLAR

MLSSA: Frequency Domain



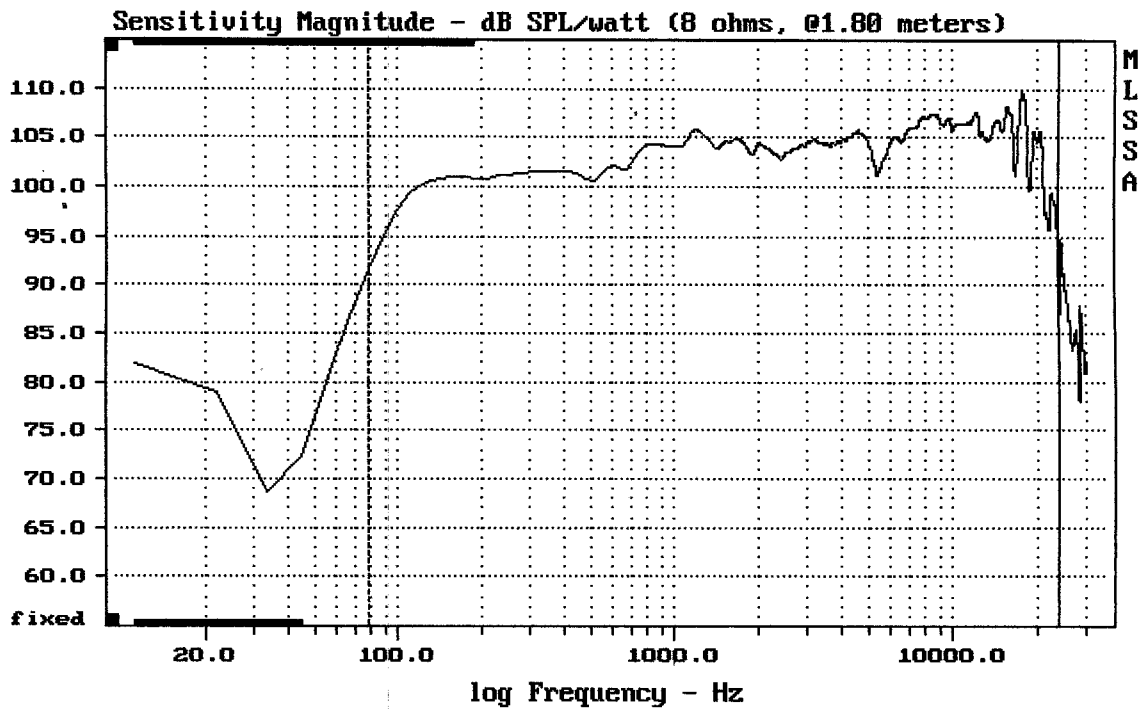
mean: 105.02, rms: 105.24, std: 1.78, max: 107.06, min: 92.08

RCF ART 315-A + ND1410 "2010" MYLAR



-68.78 dB, 1154 Hz (26), 2.970 msec (28)

DTTO, EQ "VOICE"



mean: 104.87, rms: 105.24, std: 2.27, max: 109.66, min: 91.64

RCF ART 315-A + ND1410 "2010" MYLAR