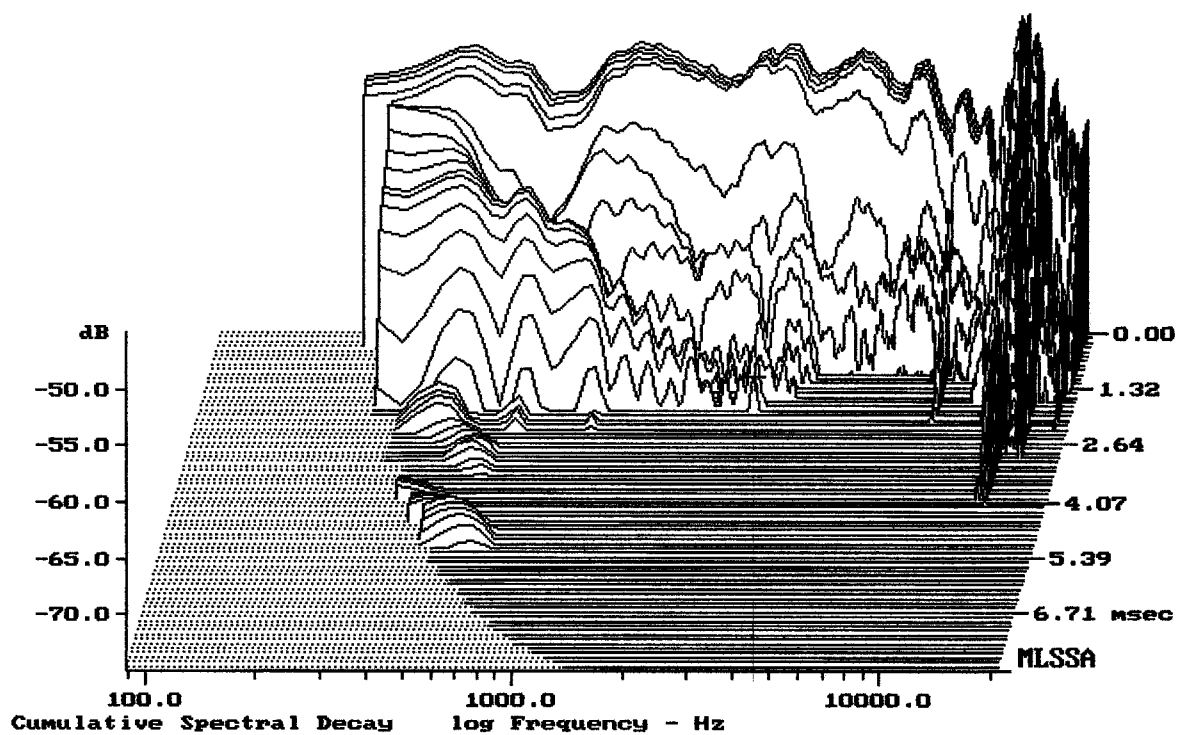


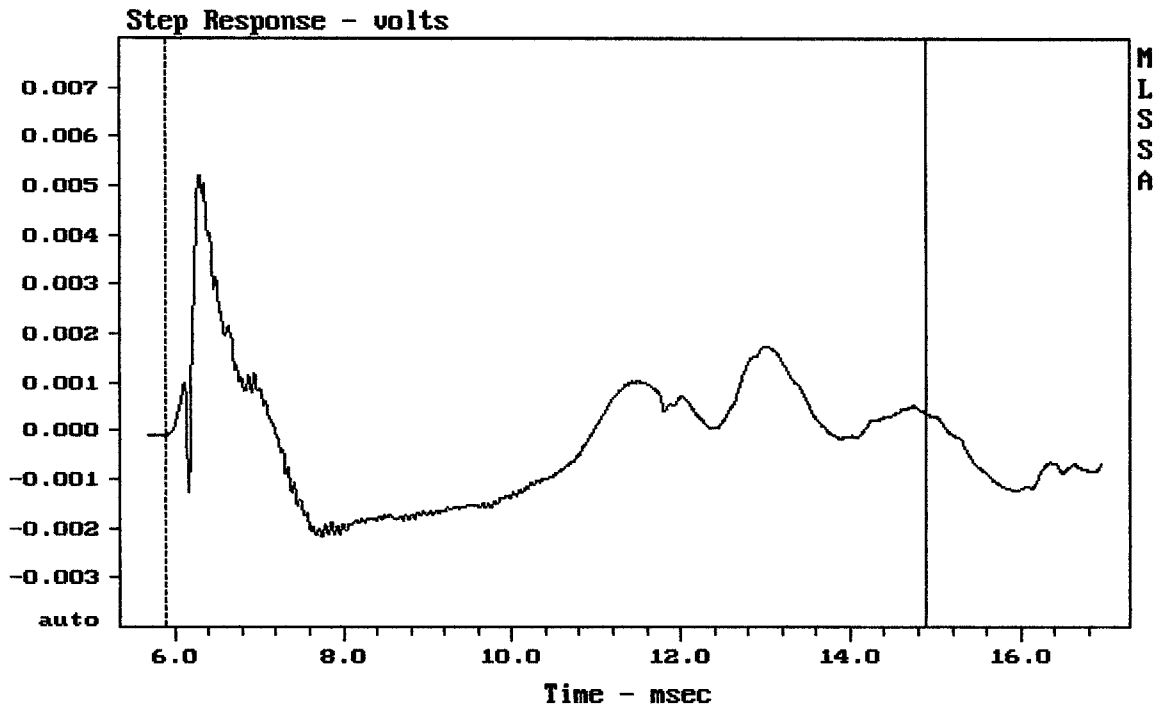
mean: 98.55, rms: 99.20, std: 2.94, max: 105.07, min: 72.21

RCF ART 500A

MLSSA: Frequency Domain



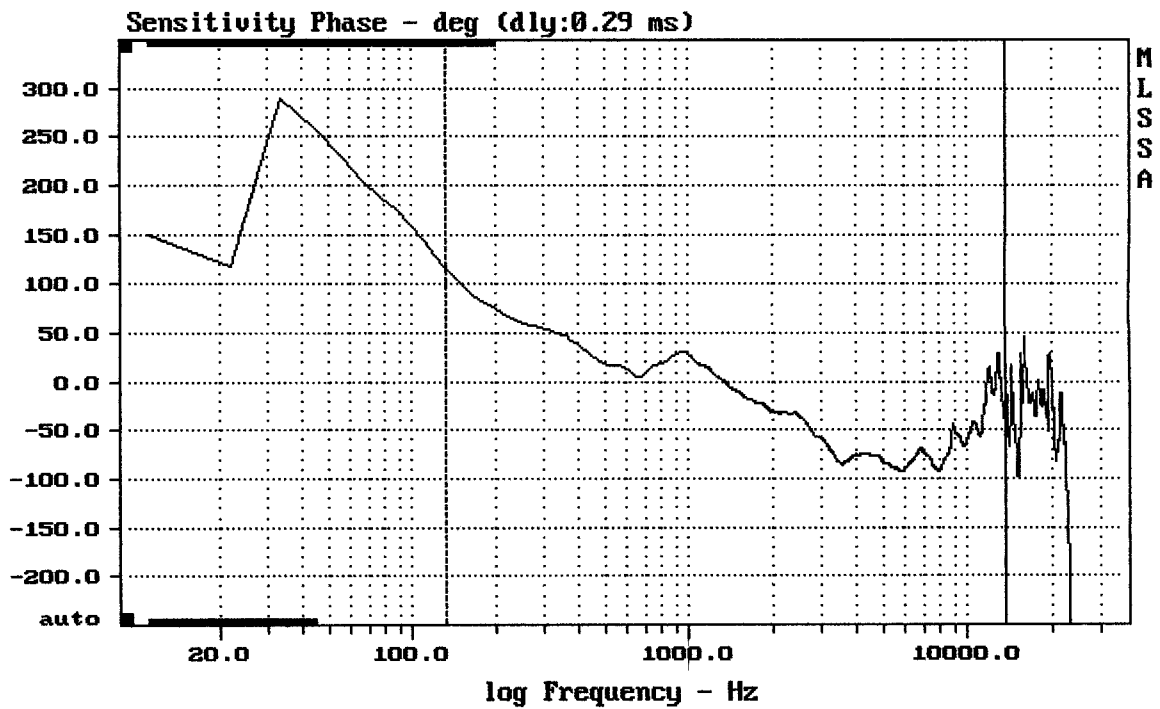
-72.06 dB, 2885 Hz (65), 1.870 msec (18)



mean: -0.0001202, rms: 0.001401, std: 0.001396, max: 0.005214, min: -0.002167

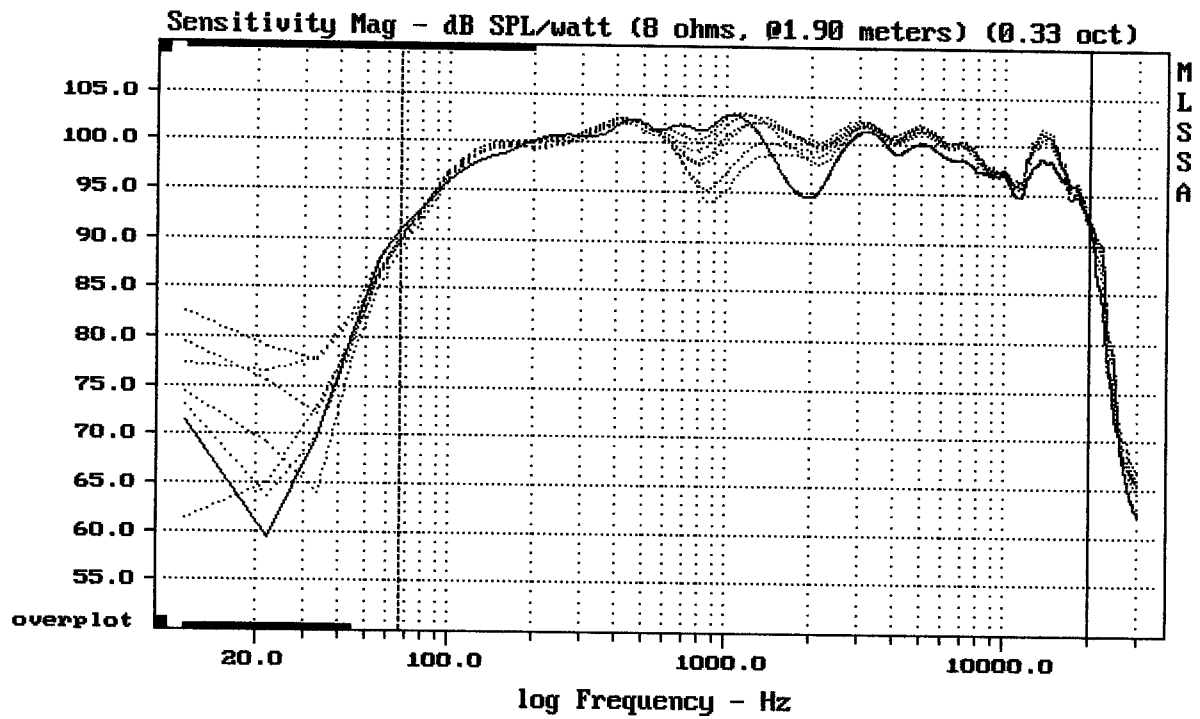
RCF ART 500A

MLSSA: Time Domain



mean: -46.3, rms: 60.24, std: 38.54, max: 116.2, min: -92.33

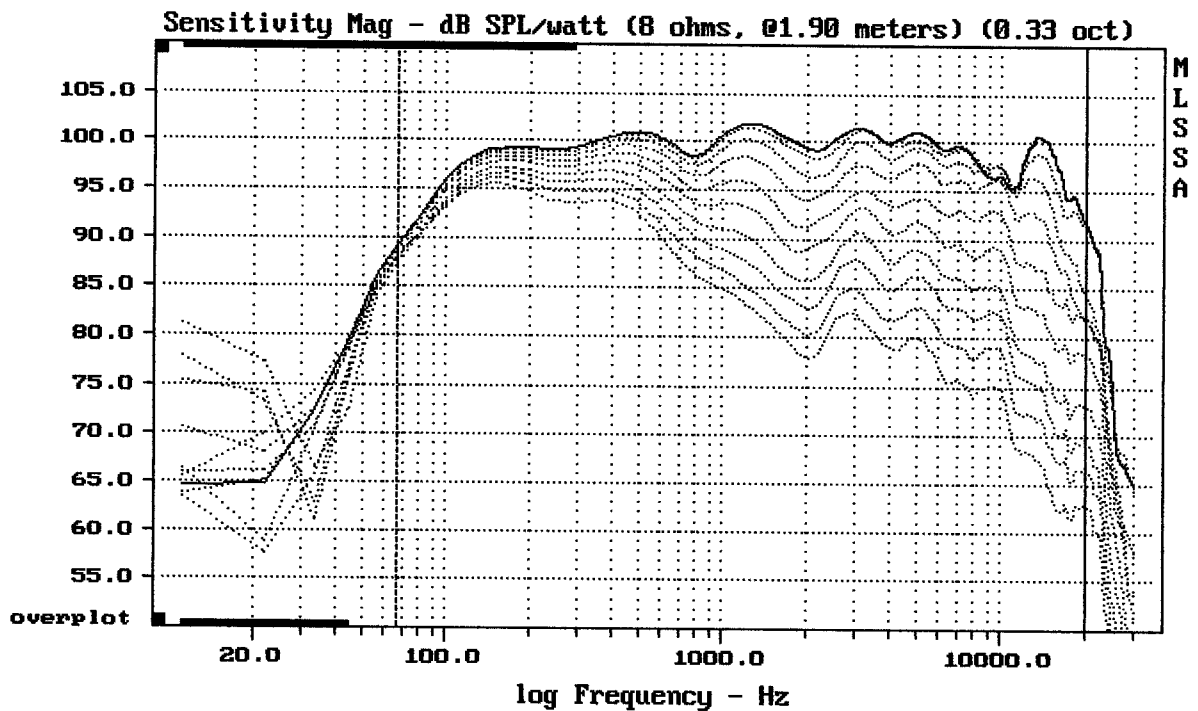
RCF ART 500A



mean: 98.70, rms: 98.93, std: 1.85, max: 102.13, min: 89.51

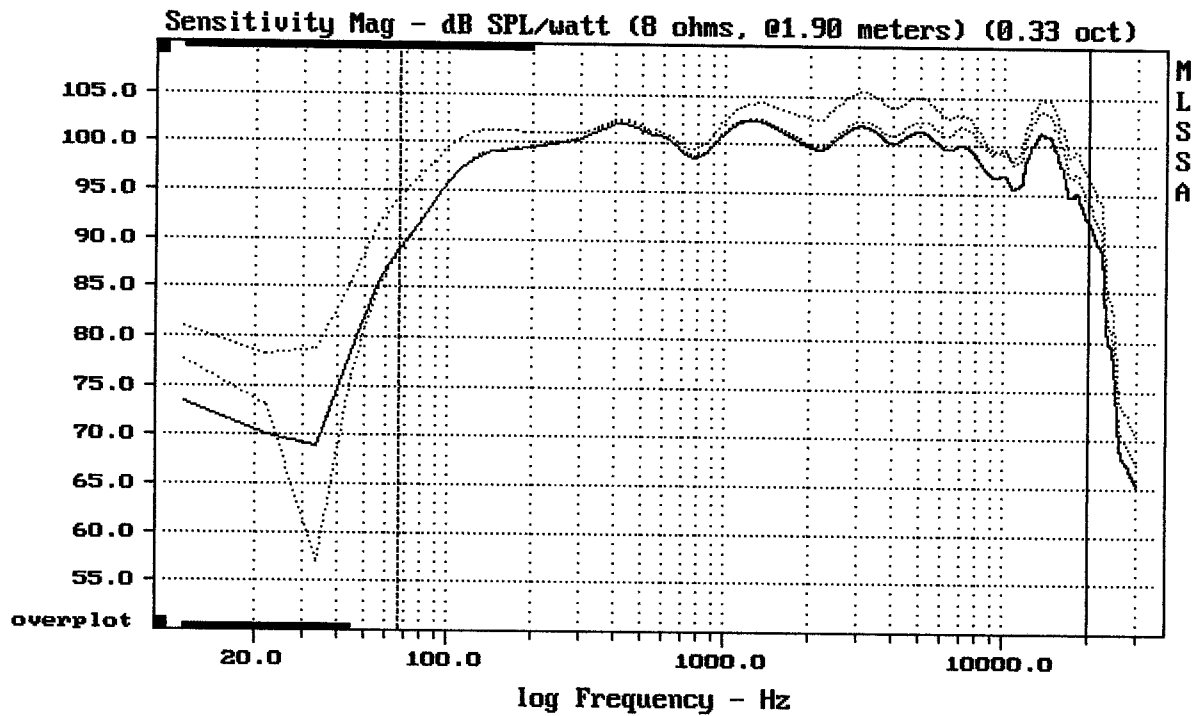
RCF ART 500A

MLSSA: Frequency Domain



Overlay Compare: dev= +24/-9.7, std= 6.6, avg= -26

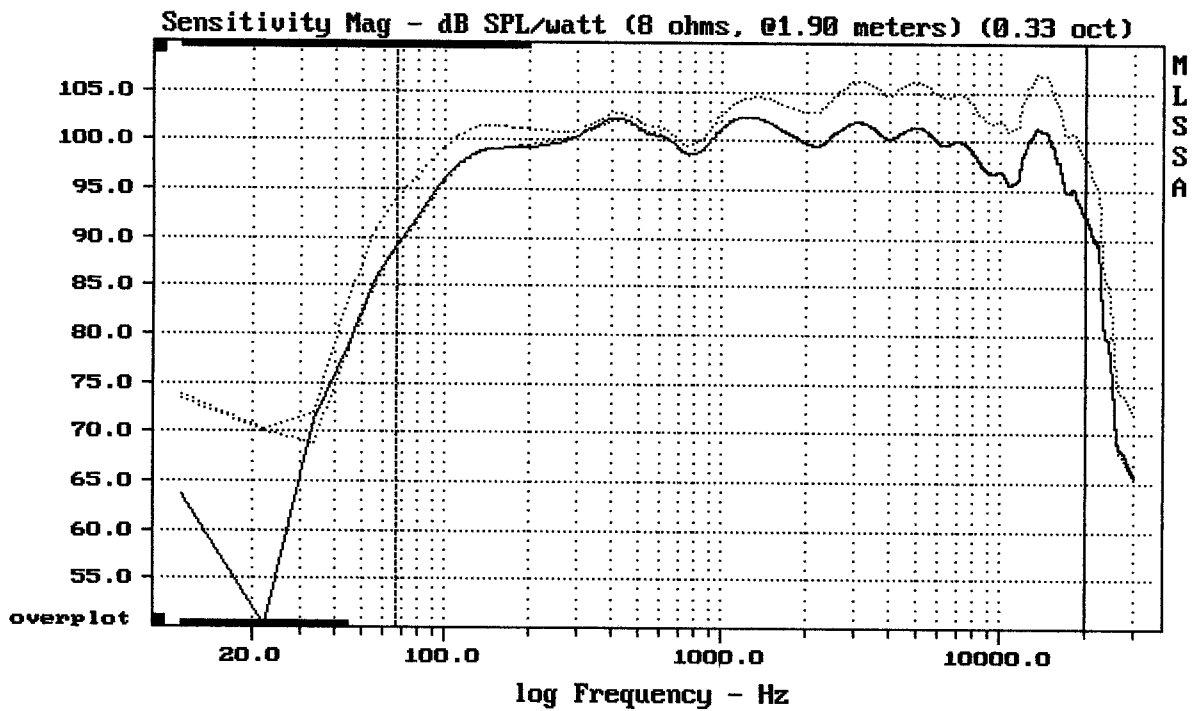
RCF ART 500A



CURSOR: y = 96.9263 x = 19997.3360 (1802)

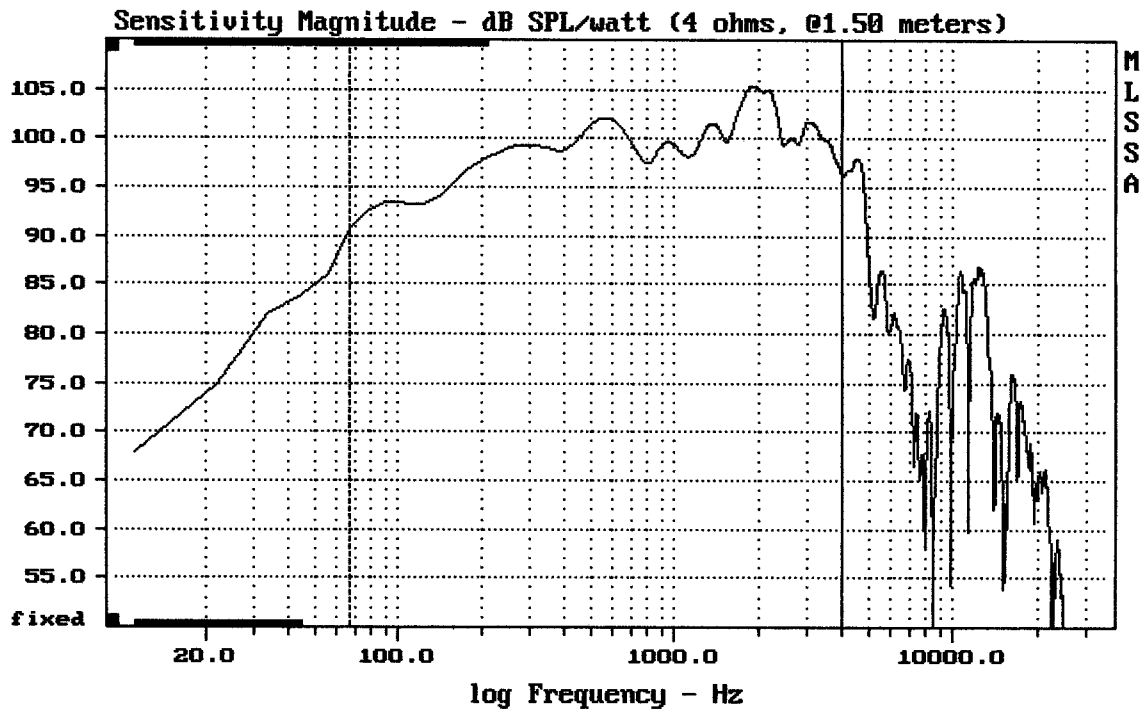
RCF ART 500A

MLSSA: Frequency Domain



Overlay Compare: dev= +1.1/-4.5, std= 1.2, avg= 4.9

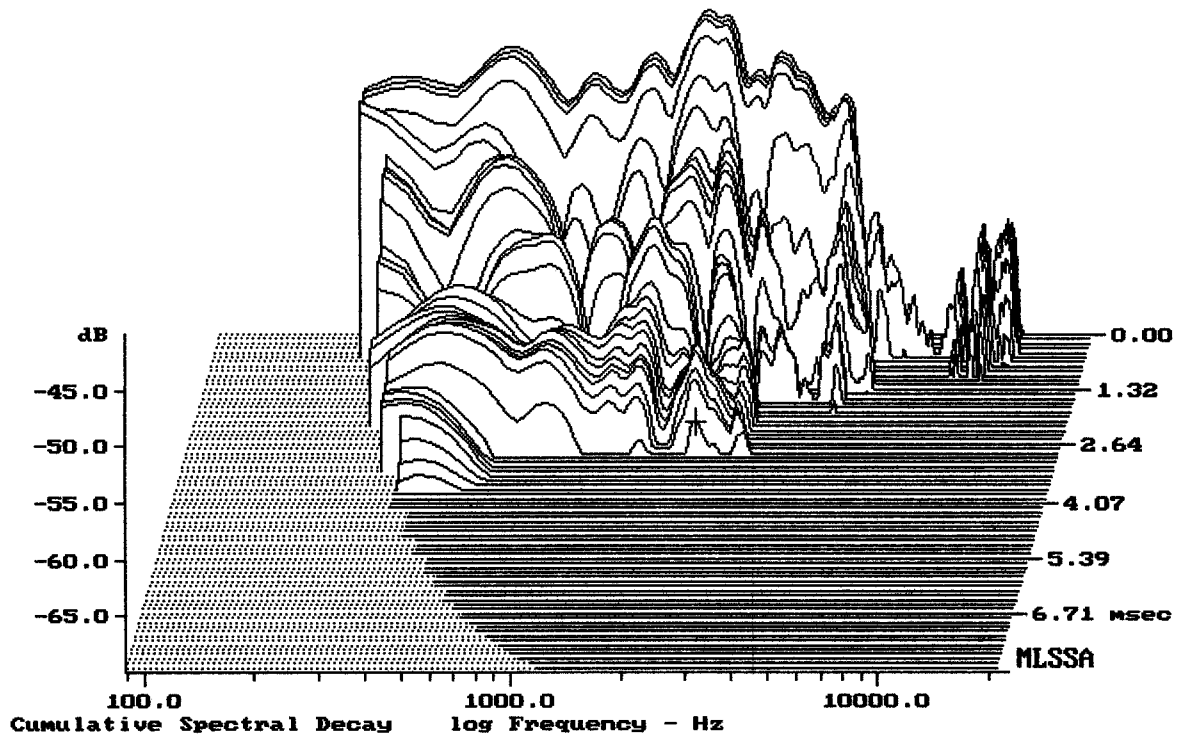
RCF ART 500A



Level (67:4006 Hz) = 99.64 dB SPL/watt (4 ohms, @1.50 meters)

15" RCF FROM ART 500A

MLSSA: Frequency Domain



-67.21 dB, 2175 Hz (49), 2.860 msec (27)

Measured Data

QC Limits

Line	Parameter	Value	Units
1	RMSE-free	0.31	Ohms
2	Fs	40.29	Hz
3	Re	2.67	Ohms[dc]
4	Res	74.85	Ohms
5	Qms	8.71	
6	Qes	0.31	
7	Qts	0.30	
8	L1	0.27	mH
9	L2	0.58	mH
10	R2	2.96	Ohms
11	RMSE-load	0.36	Ohms
12	Vas(Sd)	233.95	liters
13	Mms	68.53	grams
14	Cms	228	μ M/Newton
15	B1	12.21	Tesla-M
16	SPLref(Sd)	98.7	dB[Re]
17	Rub-index	0.00	

Method: Mass-loaded (80.00 grams)

Area (Sd): 855.30 sq cm

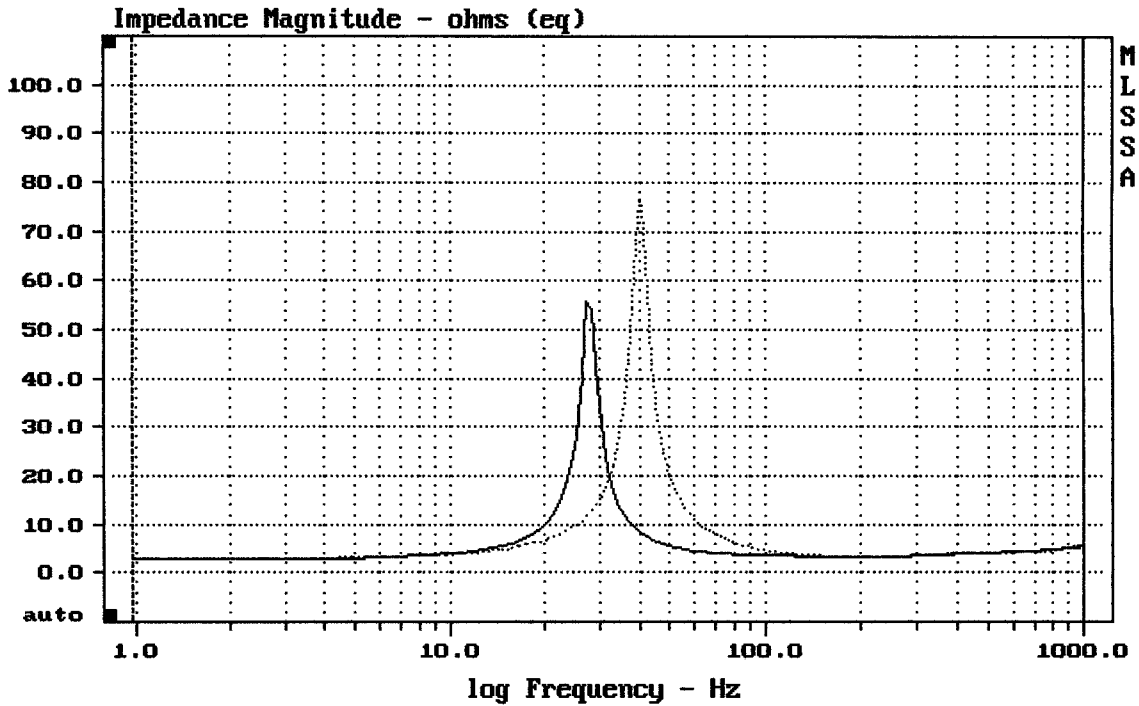
DCR mode: Measure (-0.06 ohms)

QC file: CLOSED

Analysis successful. Shift in Fs = -31.0% (-20% to -50% is recommended).

15" FROM RCF ART 500A

MLSSA: Parameters



mean: 5.154, rms: 7.693, std: 5.71, max: 76.31, min: 2.736

MLSSA: Frequency Domain