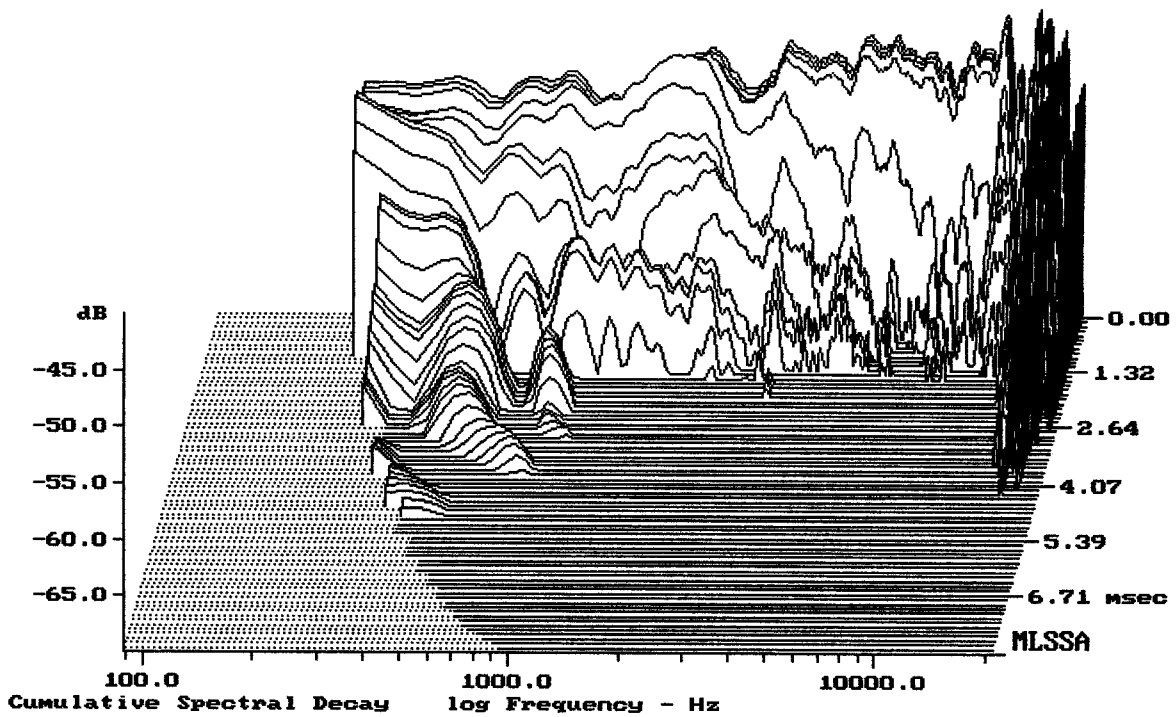


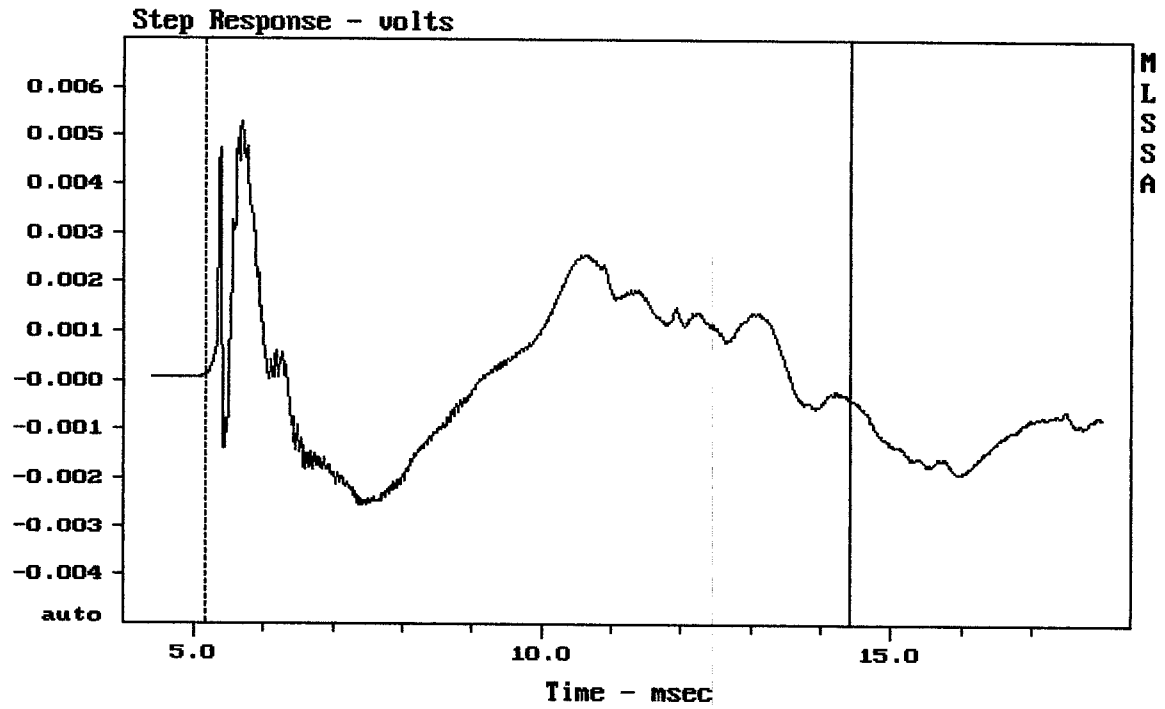
mean: 99.05, rms: 99.61, std: 2.74, max: 102.46, min: 89.04

ART 522A

MLSSA: Frequency Domain



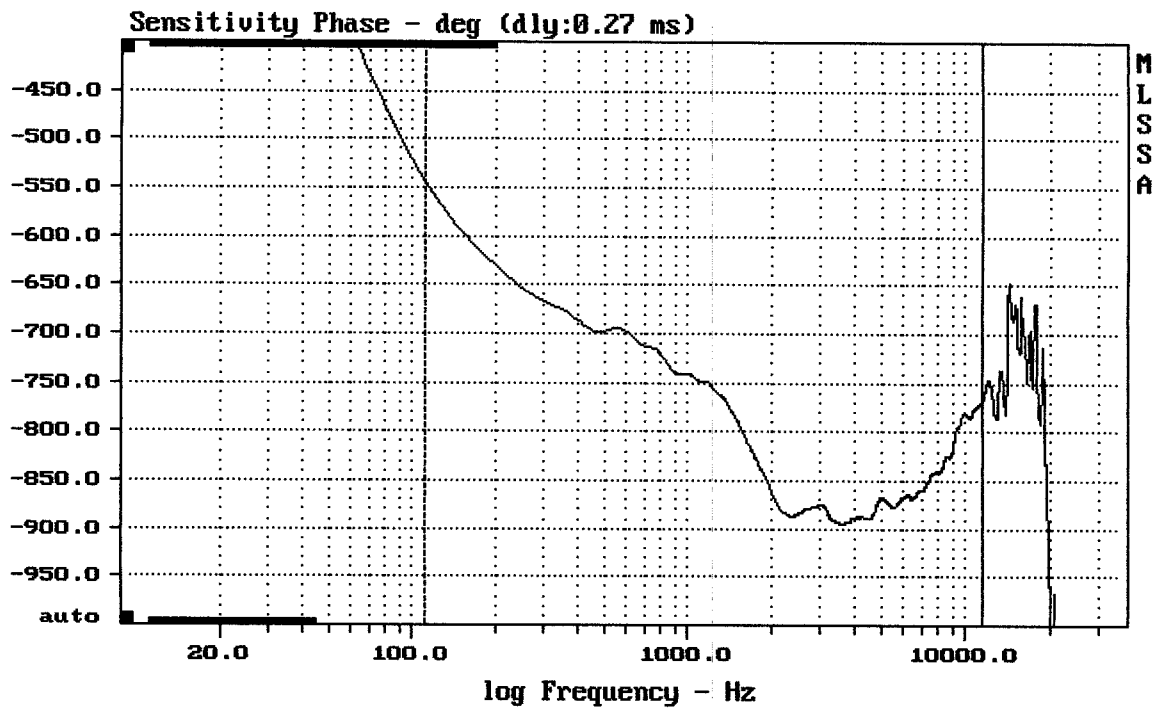
-68.79 dB, 16468 Hz (371), 4.070 msec (38)



mean: 0.0003352, rms: 0.001627, std: 0.001592, max: 0.005274, min: -0.002563

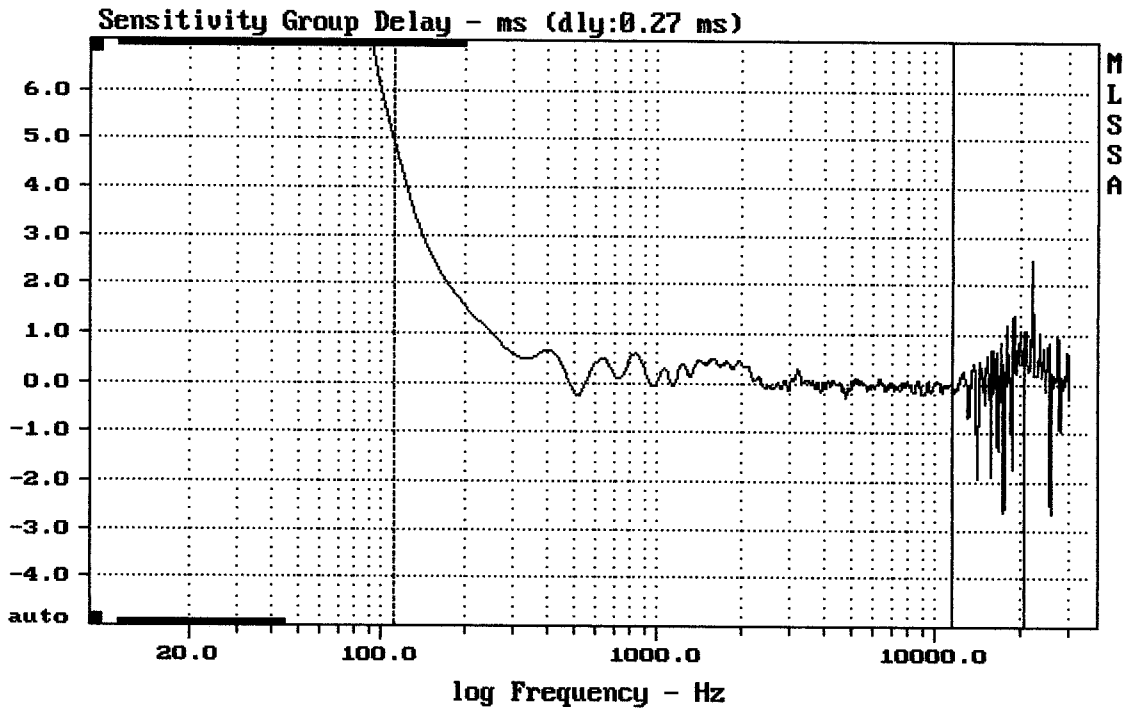
ART 522A

MLSSA: Time Domain



mean: -828.5, rms: 830.6, std: 59.22, max: -543.4, min: -895

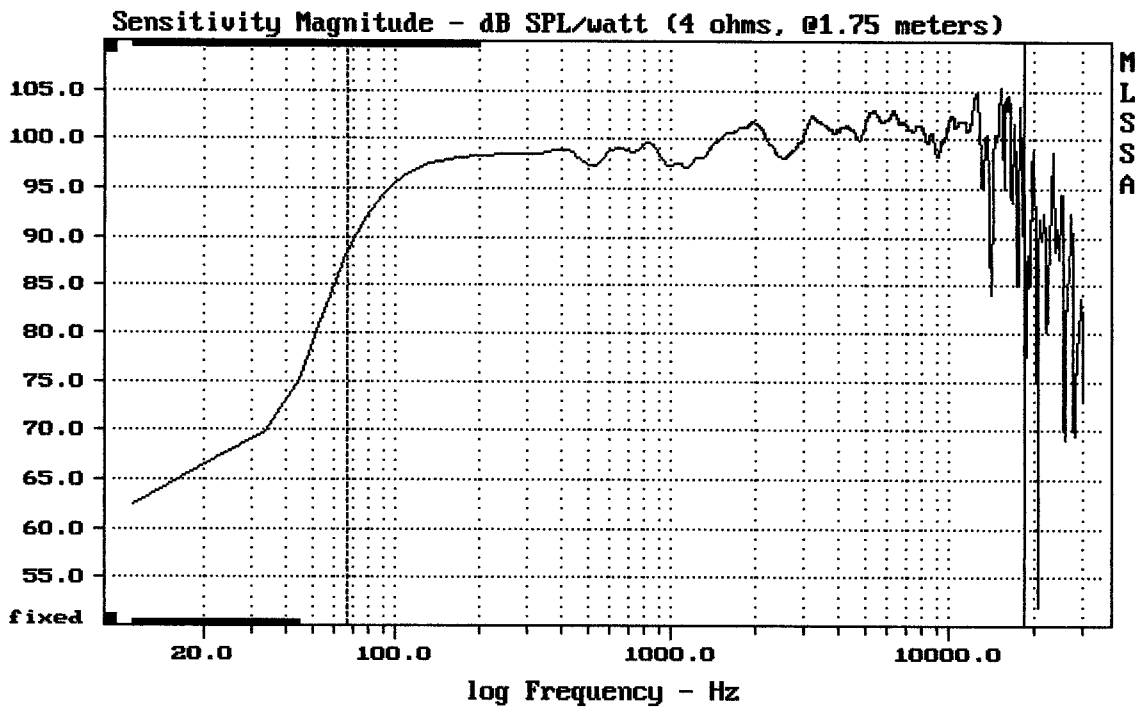
ART 522A



mean: 0.05835, rms: 0.3411, std: 0.3361, max: 4.931, min: -0.283

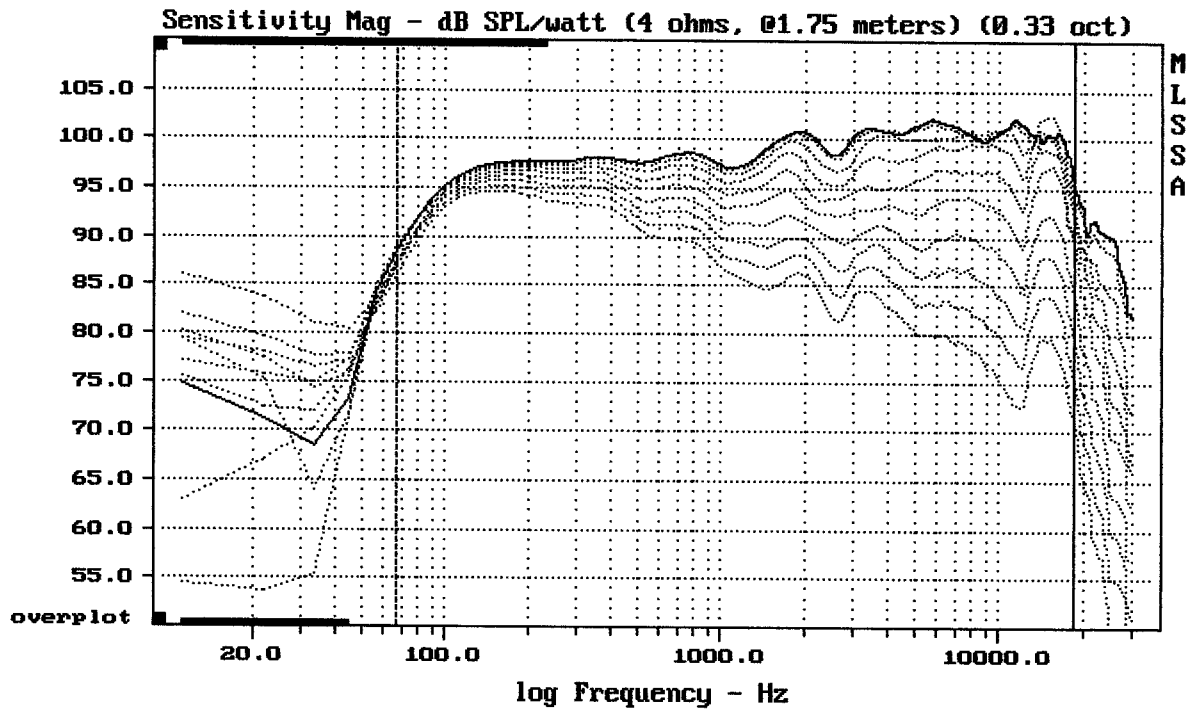
ART 522A

MLSSA: Frequency Domain



mean: 100.53, rms: 100.87, std: 2.17, max: 105.32, min: 84.06

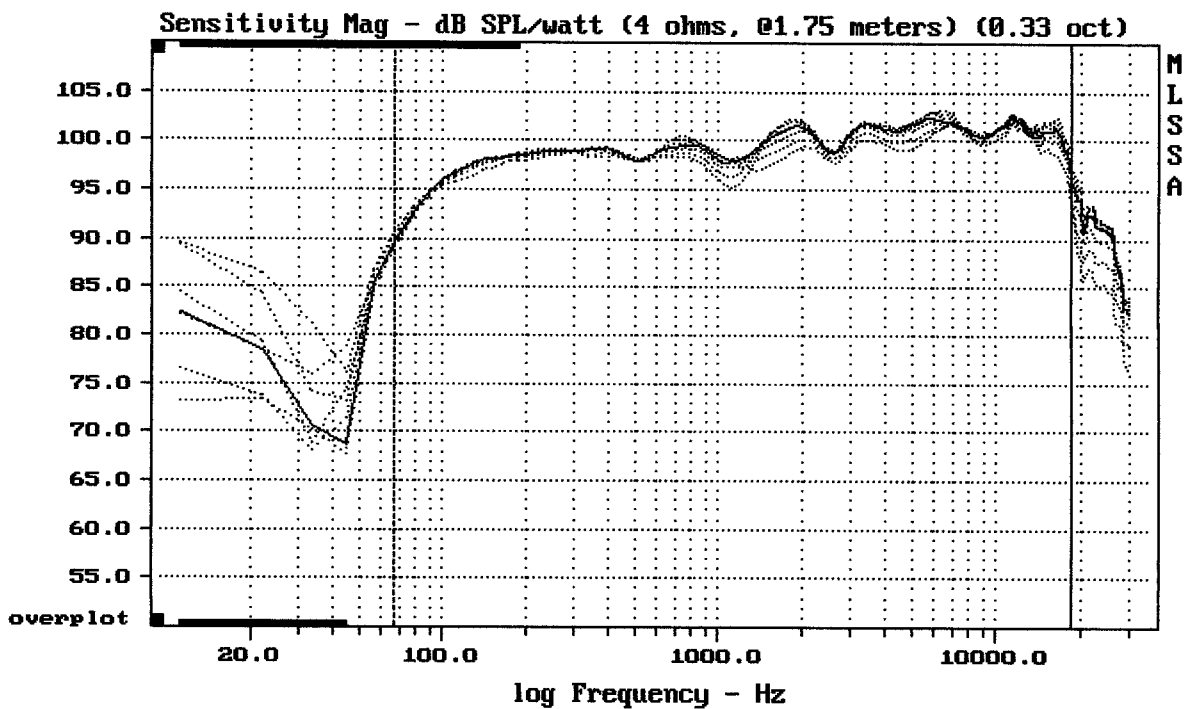
ART 522A



Overlay Compare: dev= +19/-8.1, std= 5.1, avg= -21

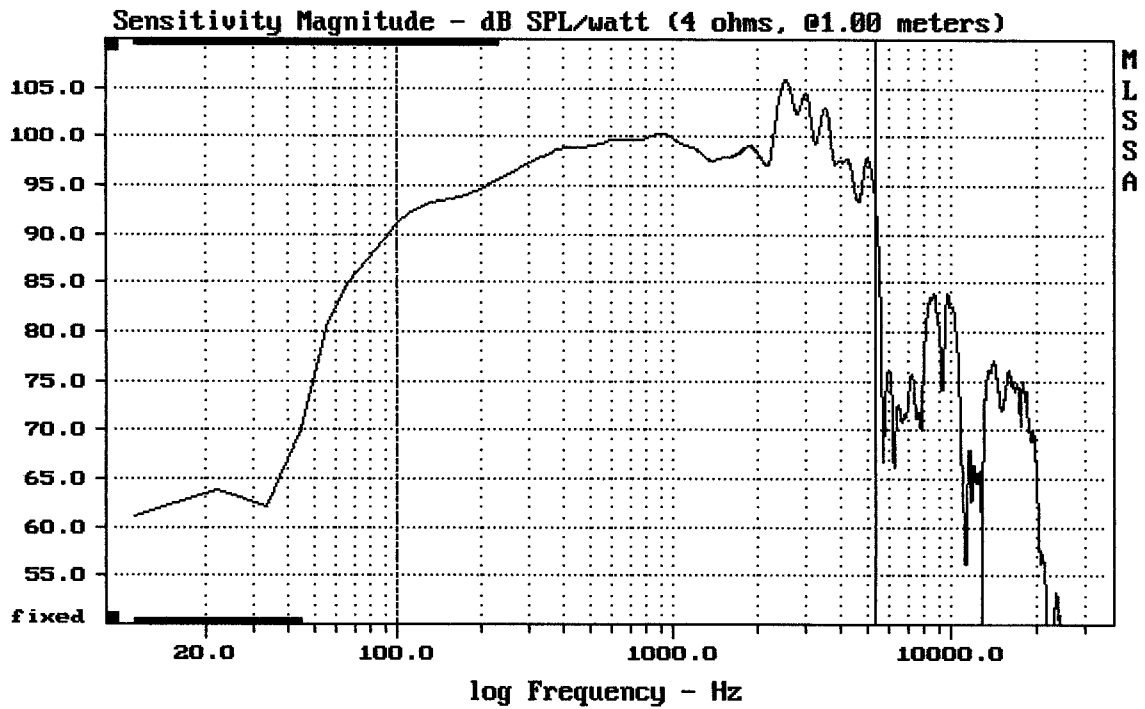
ART 522A

MLSSA: Frequency Domain



mean: 99.67, rms: 99.78, std: 1.27, max: 101.76, min: 90.76

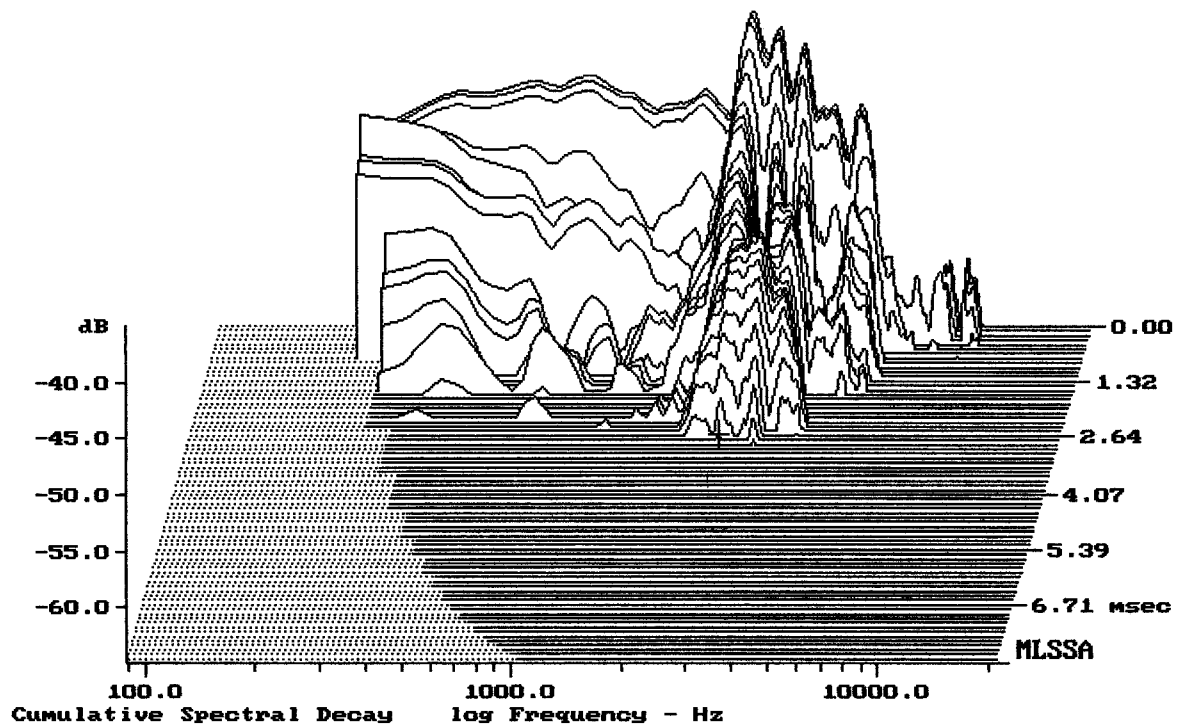
ART 522A



Level (100:5338 Hz) = 98.85 dB SPL/watt (8 ohms, @1.00 meters)

12" RCF NEO FROM ART 522A

MLSSA: Frequency Domain



-64.48 dB, 2486 Hz (56), 2.750 msec (26)

Measured Data

QC Limits

| Line | Parameter | Value | Units |
|------|------------|-------|-----------|
| 1 | RMSE-free | 0.29 | Ohms |
| 2 | Fs | 55.67 | Hz |
| 3 | Re | 2.52 | Ohms[dc] |
| 4 | Res | 65.53 | Ohms |
| 5 | Qms | 6.76 | |
| 6 | Qes | 0.26 | |
| 7 | Qts | 0.25 | |
| 8 | L1 | 0.32 | mH |
| 9 | L2 | 0.56 | mH |
| 10 | R2 | 2.26 | Ohms |
| 11 | RMSE-load | 0.33 | Ohms |
| 12 | Vas(Sd) | 72.46 | liters |
| 13 | Mms | 44.65 | grams |
| 14 | Cms | 183 | μM/Newton |
| 15 | Bl | 12.31 | Tesla-M |
| 16 | SPLref(Sd) | 98.7 | dB[Re] |
| 17 | Rub-index | 0.00 | |

Method: Mass-loaded (80.00 grams)

Area (Sd): 530.93 sq cm

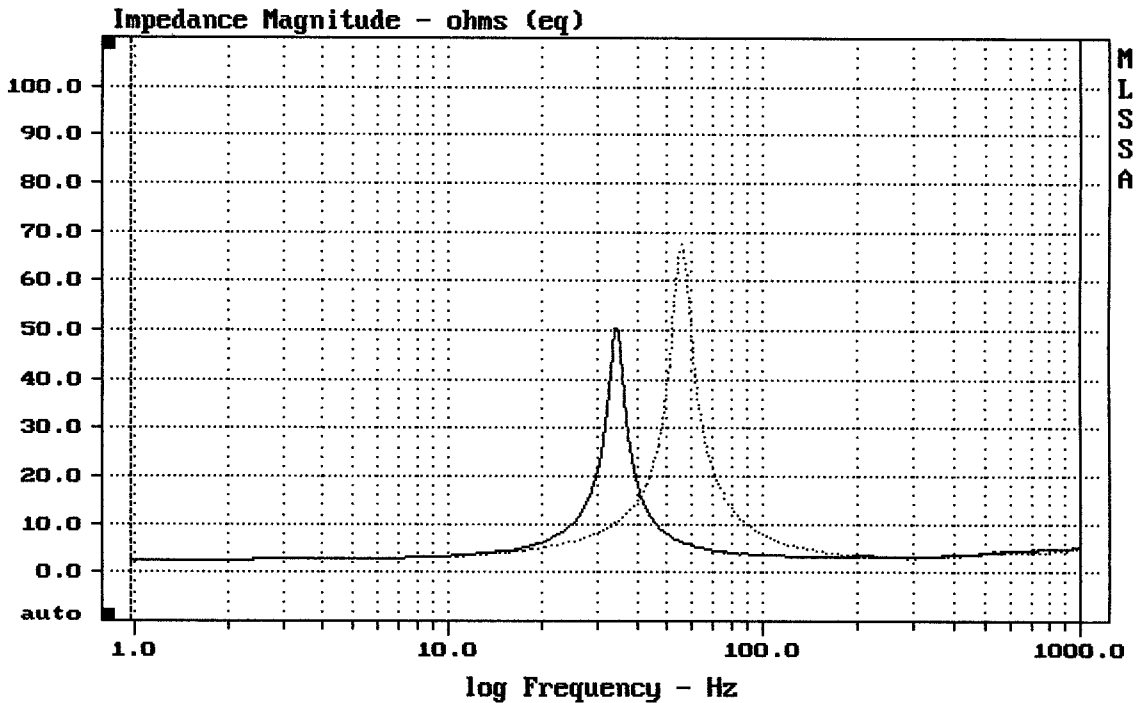
DCR mode: Measure (-0.07 ohms)

QC file: CLOSED

Analysis successful. Shift in Fs = -38.2% (-20% to -50% is recommended).

12" RCF NEO FROM ART 522A

MLSSA: Parameters



mean: 5.369, rms: 8.464, std: 6.544, max: 67.54, min: 2.599

MLSSA: Frequency Domain