

# Koaxiální reproduktor B&C Speakers 12CX32

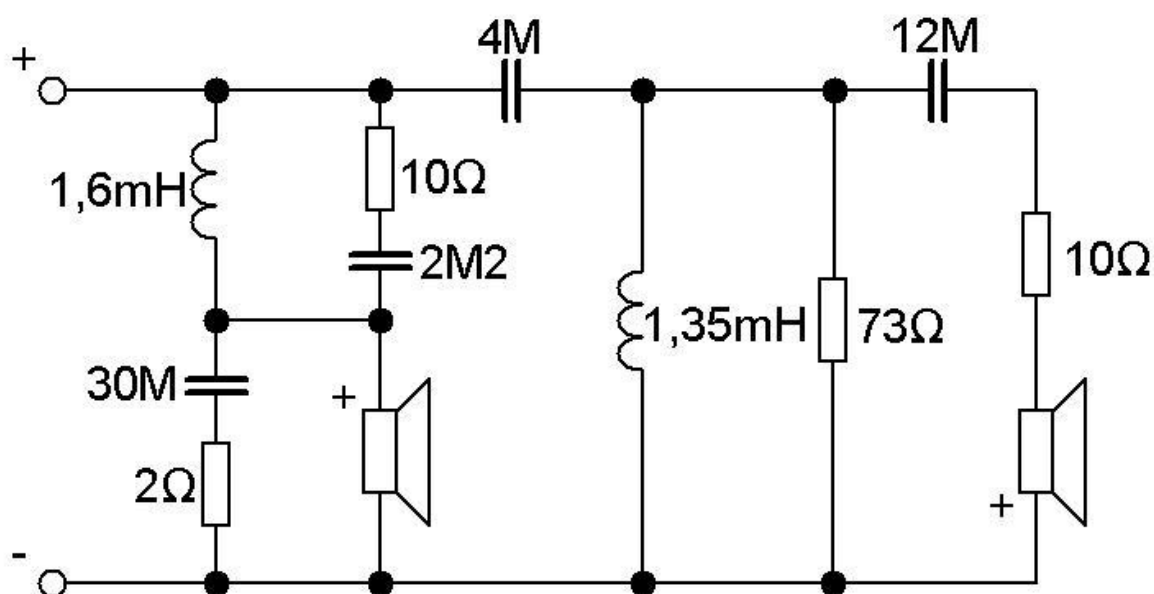
<http://eshop.prodance.cz/DetailPage.asp?DPG=82691>

Doporučená výhybka:

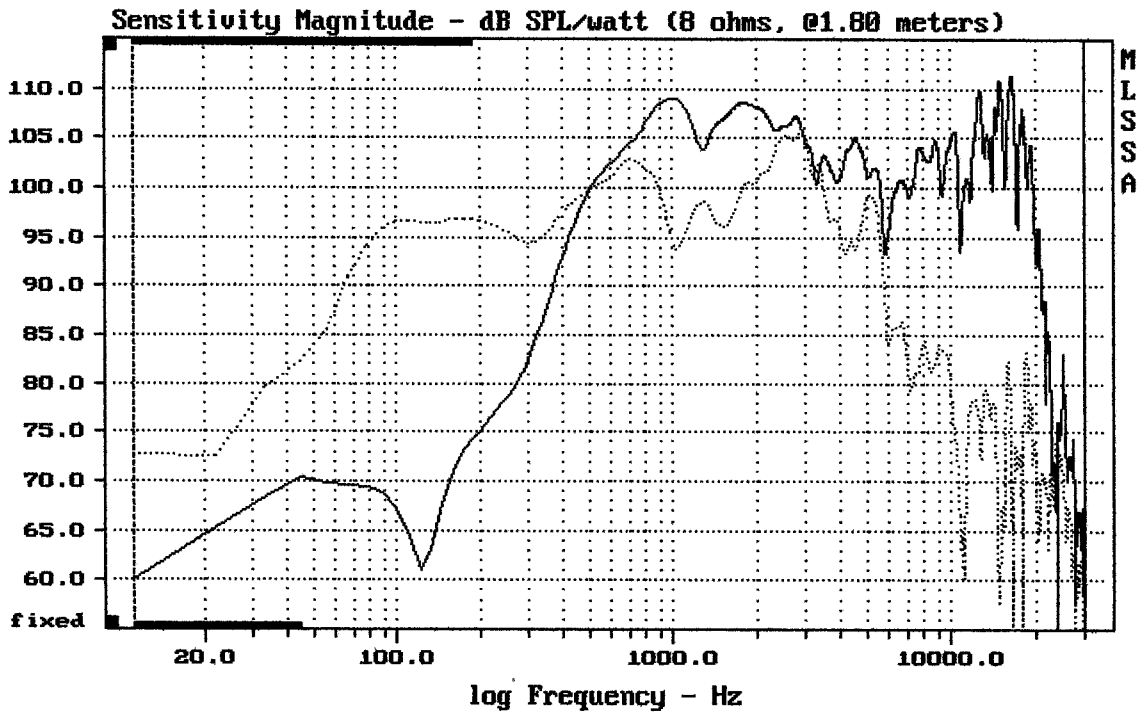
B&C Speakers XO-3

<http://eshop.prodance.cz/DetailPage.asp?DPG=78073>

První strana měřena s výhybkou:



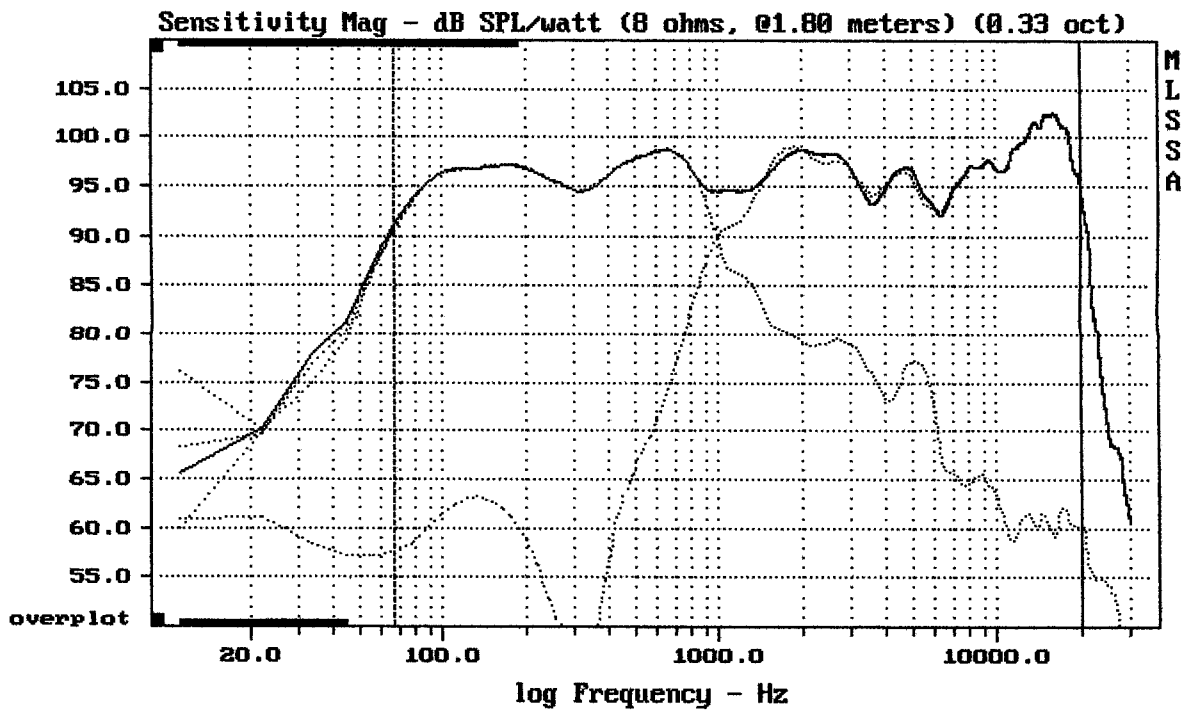
Zbýlé měření bylo měřeno s XO-3



CURSOR: dy = -9.88862 x = 30007.1014 (2704)

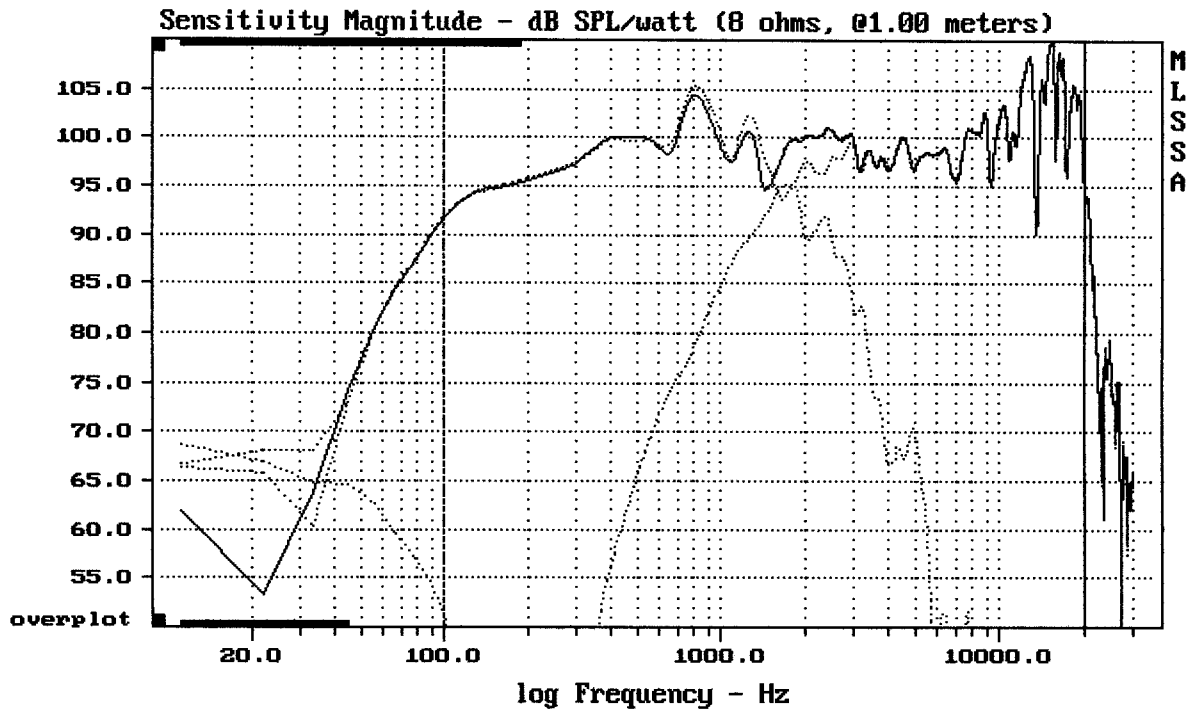
12CX32

MLSSA: Frequency Domain



Level (67:20000 Hz) = 97.02 dB SPL/watt (8 ohms, @1.00 meters) (0.33 oct)

12CX32



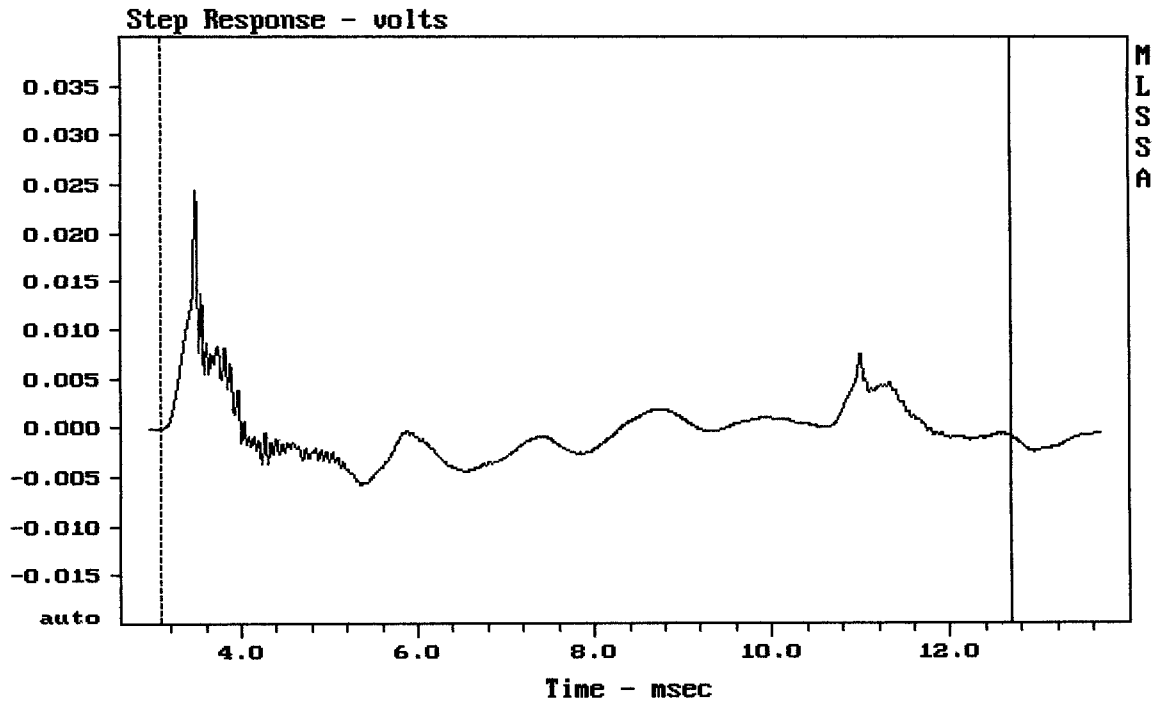

---

Level (100:20000 Hz) = 100.37 dB SPL/watt (8 ohms, @1.00 meters)

---

12CX32

MLSSA: Frequency Domain



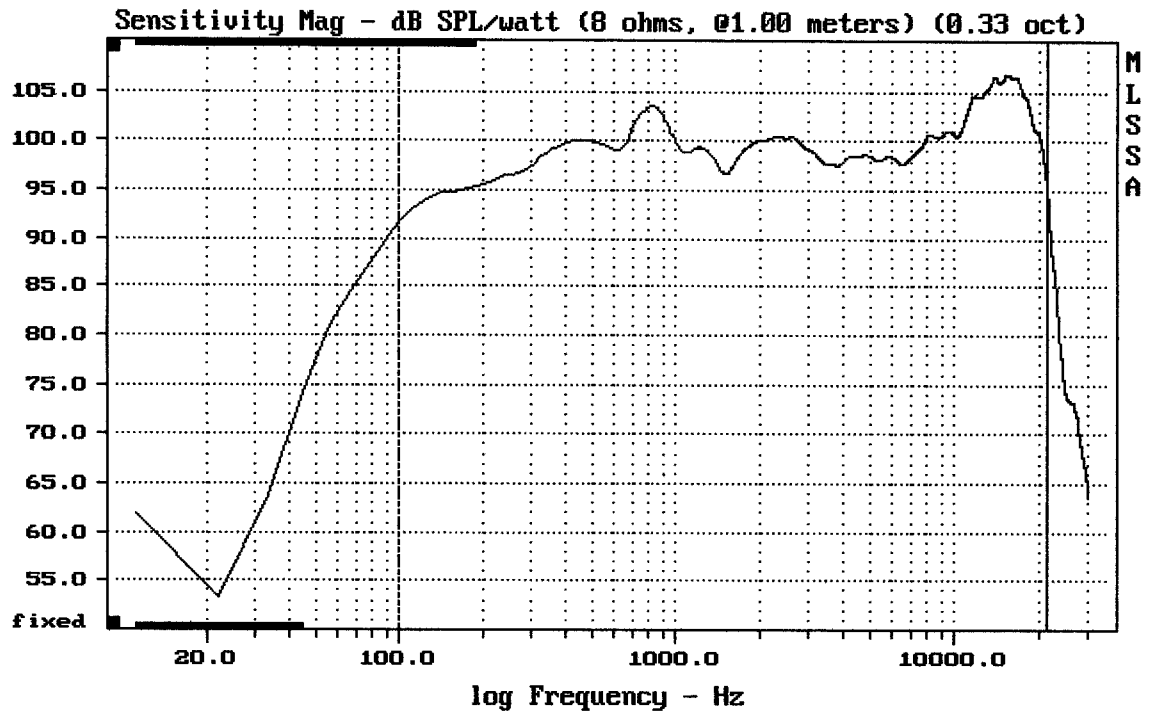

---

CURSOR: y = -0.000834265 x = 12.6830 (1153)

---

12CX32

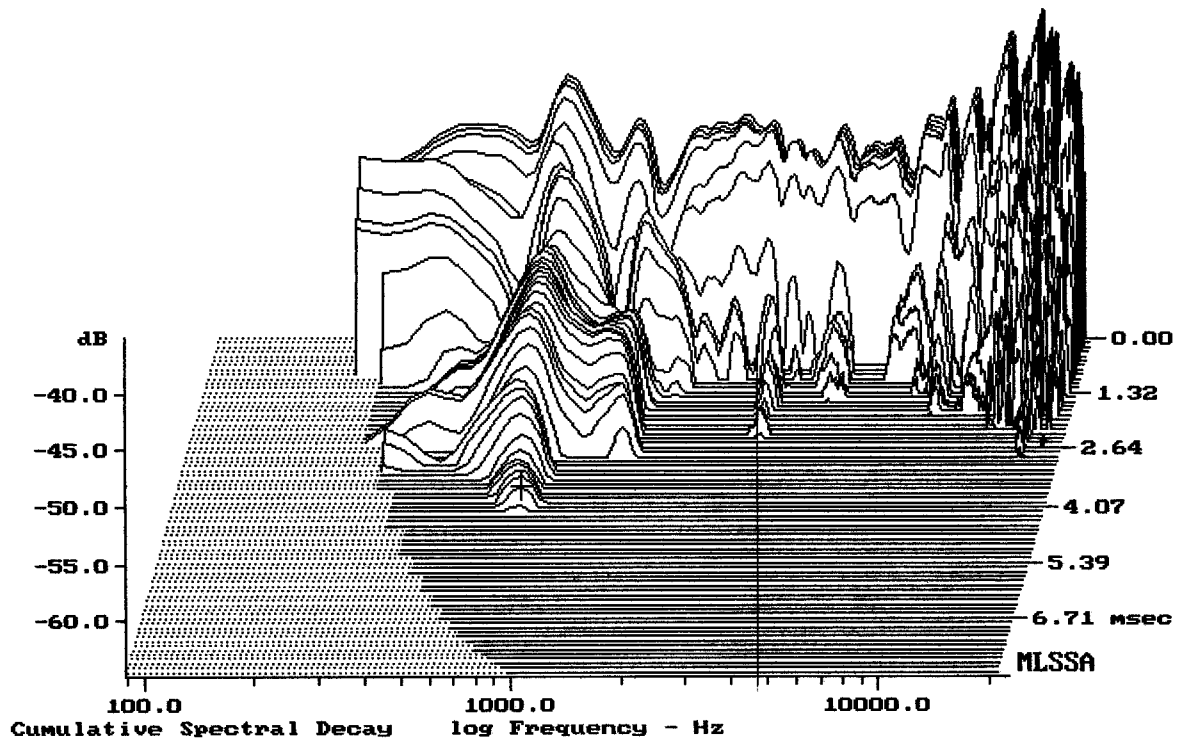
+ x0-3



Level (100:21507 Hz) = 100.29 dB SPL/watt (8 ohms, @1.00 meters) (0.33 oct)

12CX32

MLSSA: Frequency Domain



-63.23 dB, 799 Hz (18), 4.070 msec (38)

+x0-3

Measured Data

QC Limits

Line	Parameter	Value	Units
1	RMSE-free	0.48	Ohms
2	Fs	73.99	Hz
3	Re	5.18	Ohms [dc]
4	Res	94.78	Ohms
5	Qms	7.53	
6	Qes	0.41	
7	Qts	0.39	
8	L1	0.47	mH
9	L2	1.13	mH
10	R2	4.51	Ohms
11	RMSE-load	0.79	Ohms
12	Vas (Sd)	53.66	liters
13	Mms	34.14	grams
14	Cms	136	$\mu$ M/Newton
15	Bl	14.13	Tesla-M
16	SPLref (Sd)	99.1	dB [Re]
17	Rub-index	0.03	

Method: Mass-loaded (40.00 grams)

Area (Sd): 530.93 sq cm

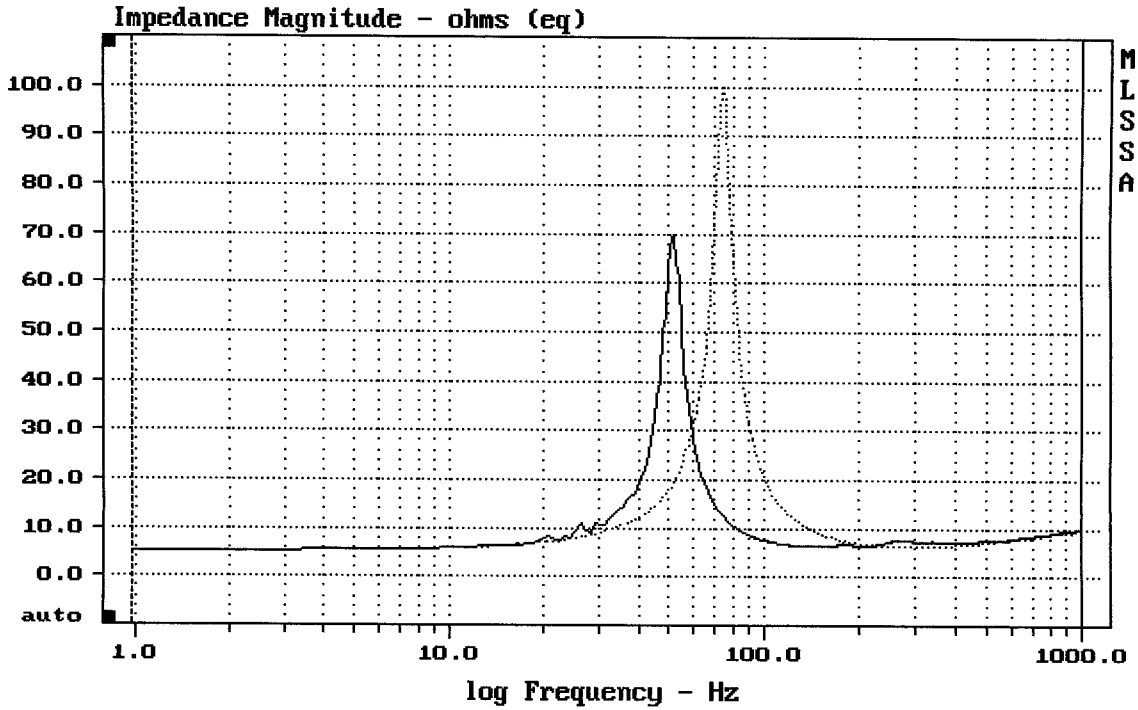
DCR mode: Measure (-0.08 ohms)

QC file: CLOSED

Analysis successful. Shift in Fs = -30.7% (-20% to -50% is recommended).

12CX32 A

MLSSA: Parameters



CURSOR: dy = -0.314968 x = 1000.9766 (1025)

DTTO

3-16-98 10:51 AM

MLSSA: Frequency Domain

Measured Data

QC Limits

Line	Parameter	Value	Units
1	RMSE-free	0.41	Ohms