

Sestava Eminence Beta-12 CX + Selenium D210Ti

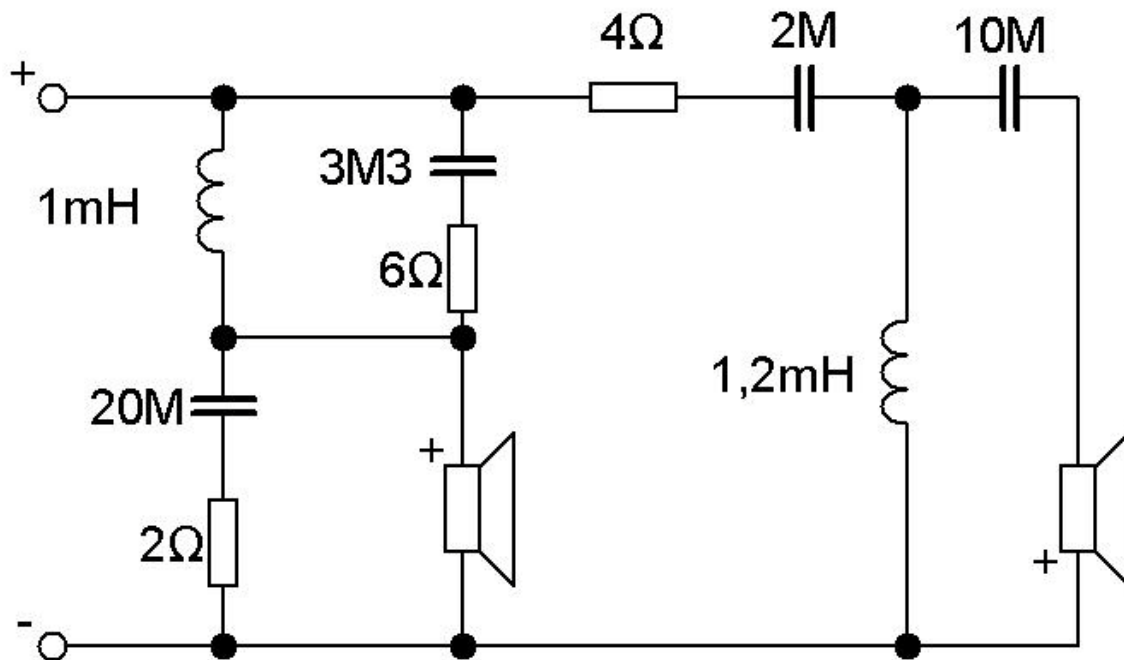
Osazení:

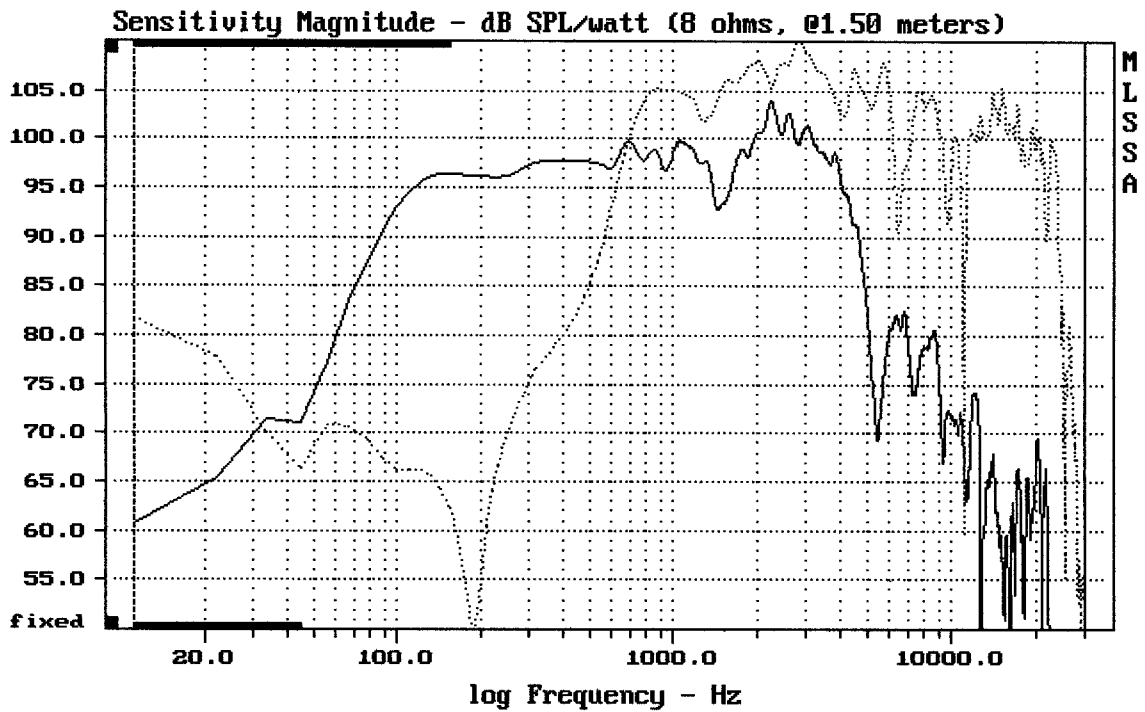
- Eminence Beta-12 CX:

<http://eshop.prodance.cz/DetailPage.asp?DPG=84339>

- Selenium D210Ti

Schéma výhybky:

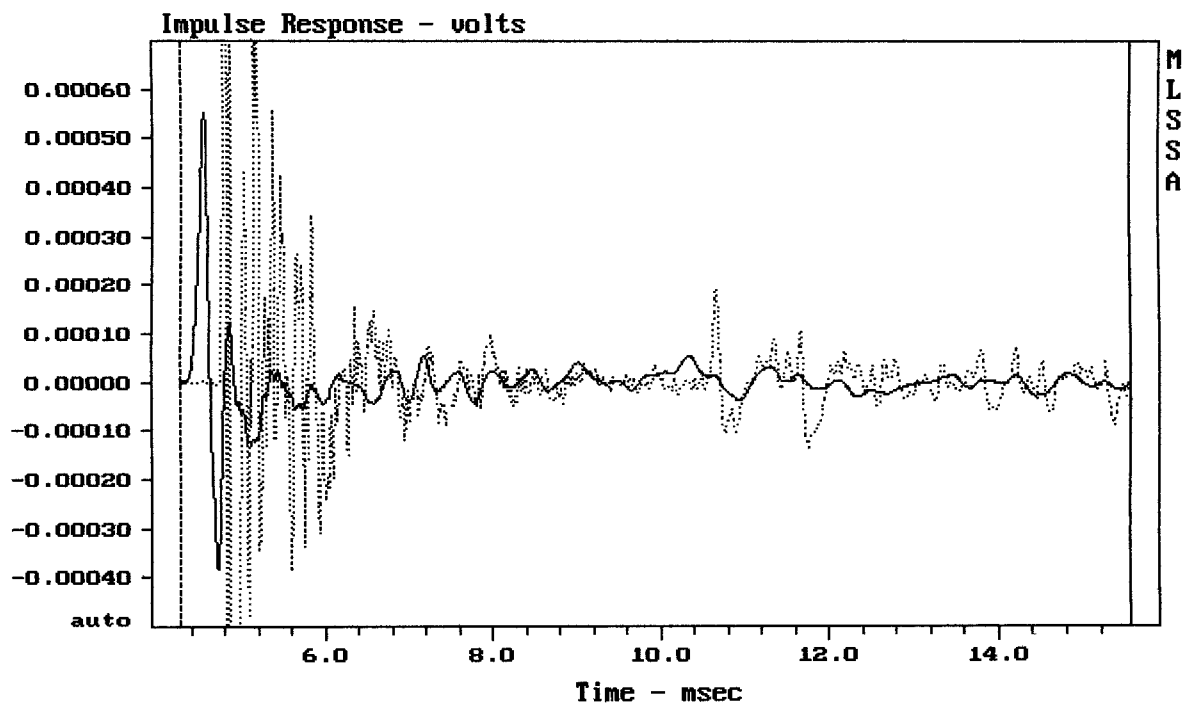




CURSOR: dy = 14.0821 x = 30007.1014 (2704)

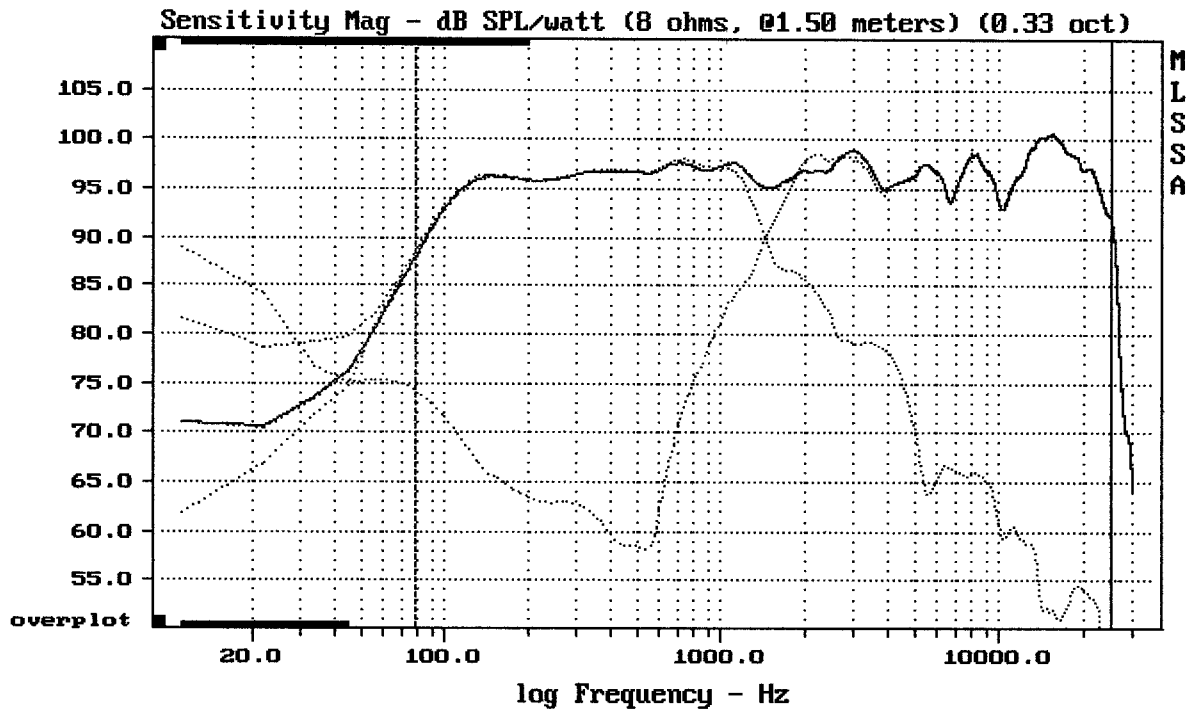
EMINENCE BETA 12CX + SELENIUM D210TI

MLSSA: Frequency Domain



CURSOR: dy = 8.89988e-006 x = 15.5540 (1414)

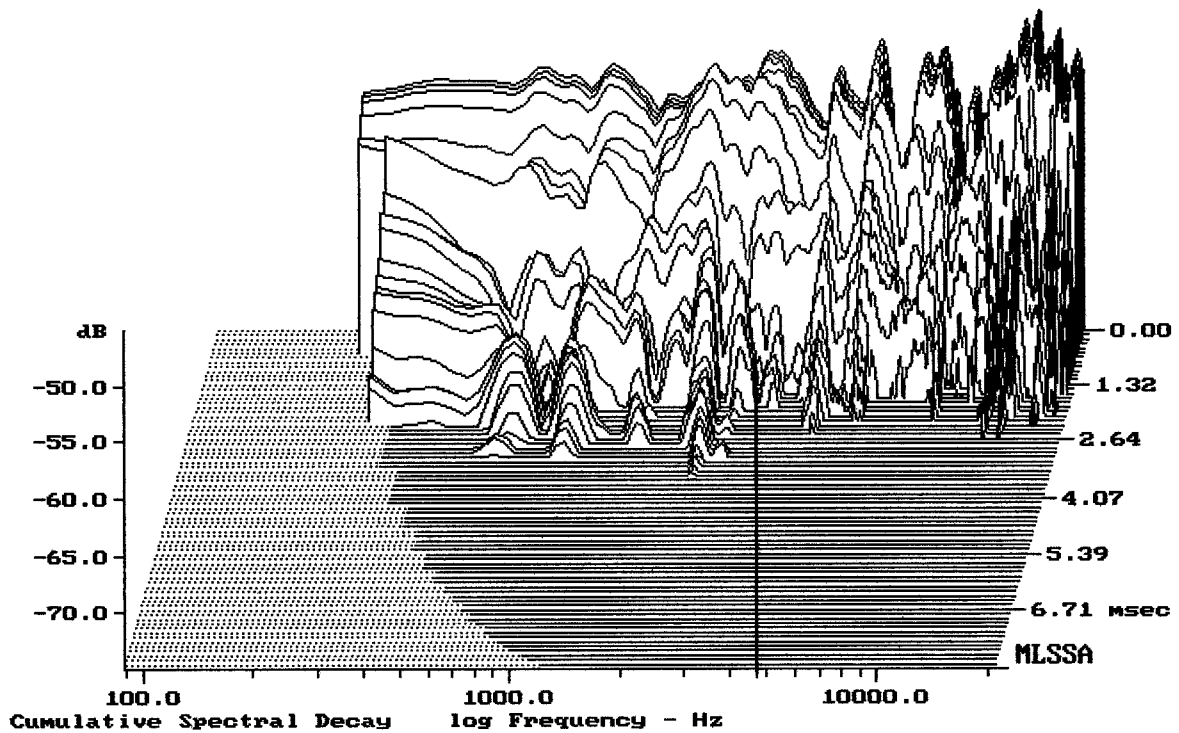
EMINENCE BETA 12CX + SELENIUM D210TI



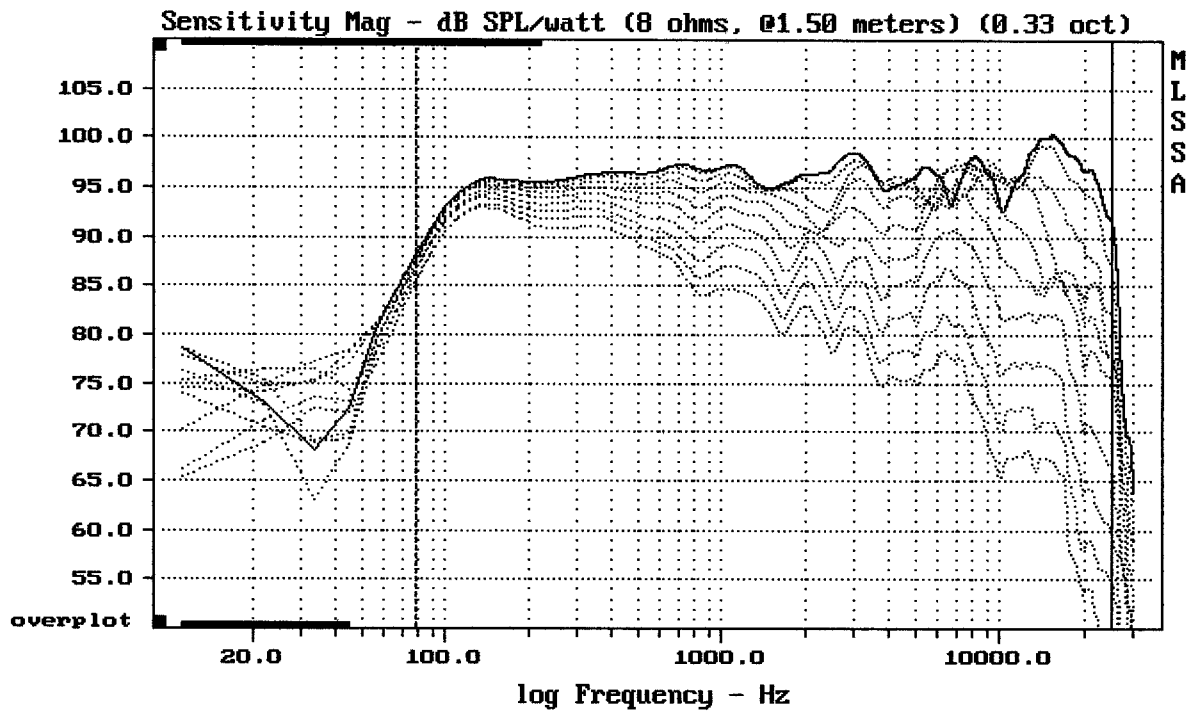
Level (78:25002 Hz) = 96.72 dB SPL/watt (8 ohms, @1.50 meters) (0.33 oct)

EMINENCE BETA 12CX + SELENIUM D210TI

MLSSA: Frequency Domain



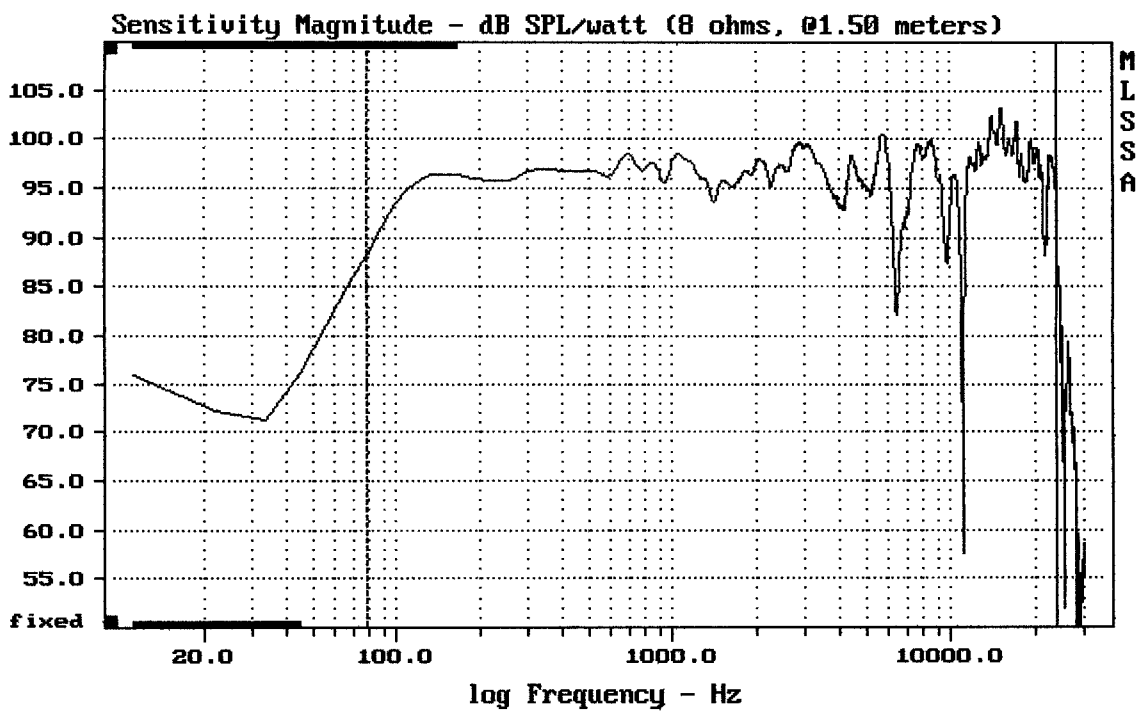
-74.14 dB, 2219 Hz (50), 3.300 msec (31)



Overlay Compare: dev= +27/-15, std= 11, avg= -30

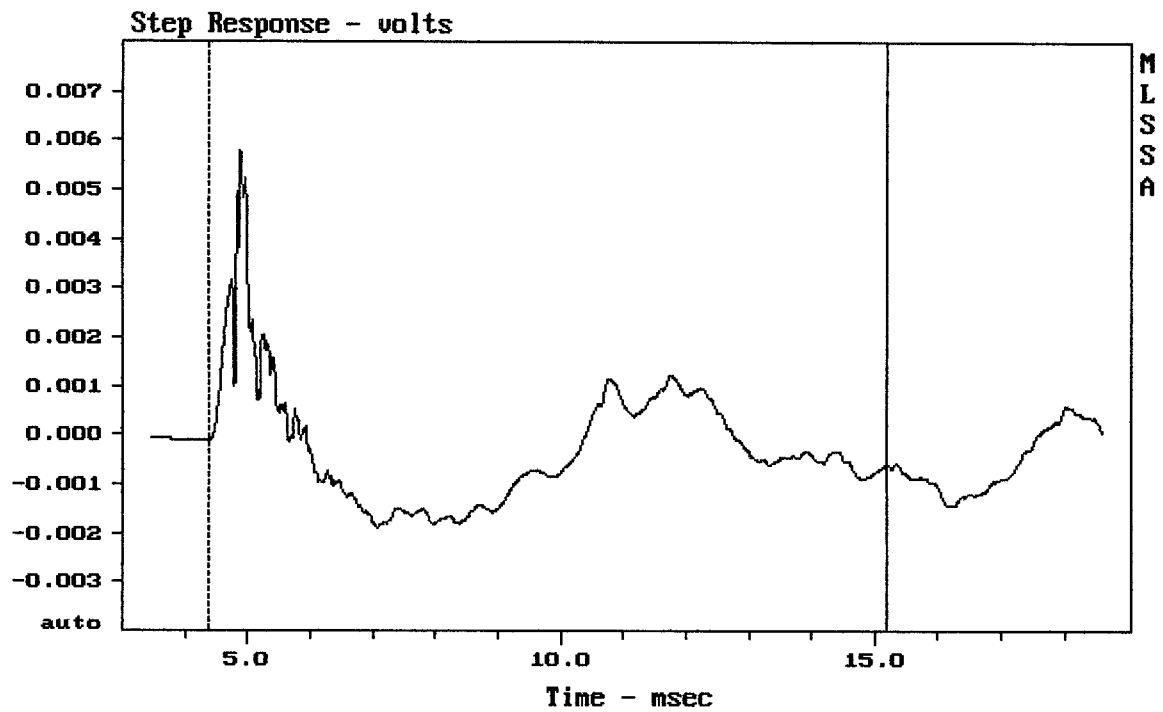
EMINENCE BETA 12CX + SELENIUM D210TI

MLSSA: Frequency Domain



Level (78:24003 Hz) = 96.79 dB SPL/watt (8 ohms, @1.50 meters)

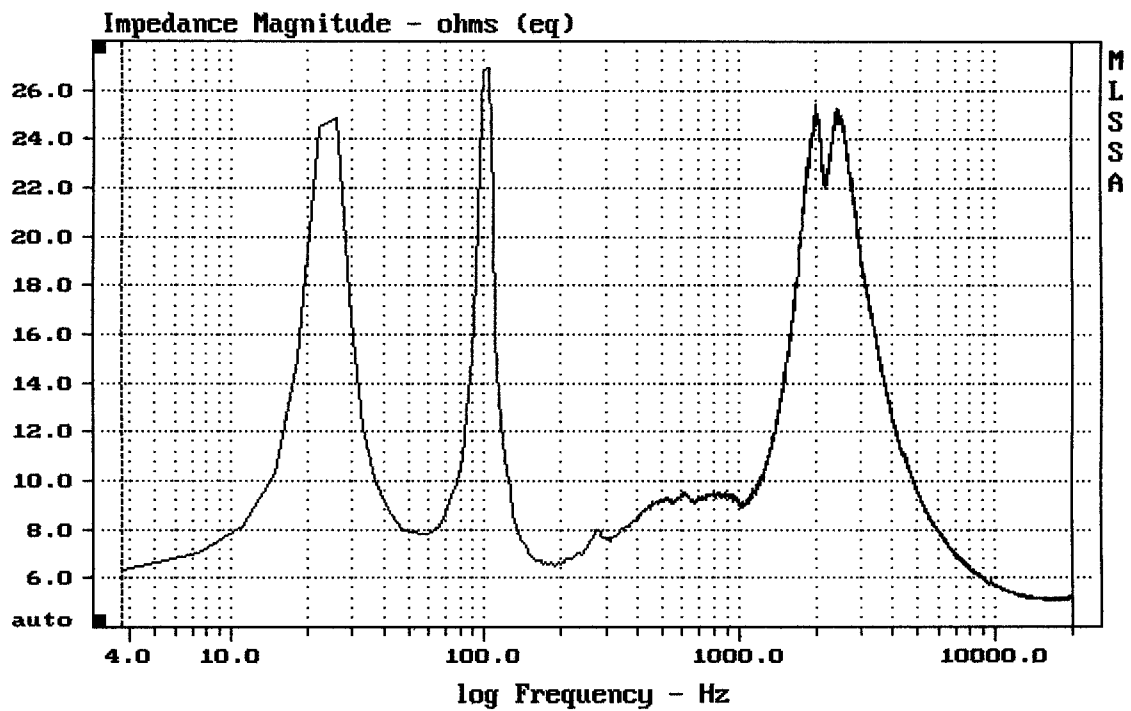
EMINENCE BETA 12CX + SELENIUM D210TI



CURSOR: y = -0.000619925 x = 15.1800 (1380)

EMINENCE BETA 12CX + SELENIUM D210TI

MLSSA: Time Domain



mean: 8.057, rms: 9.418, std: 4.877, max: 26.9, min: 5.076

EMINENCE BETA 12CX + SELENIUM D210TI