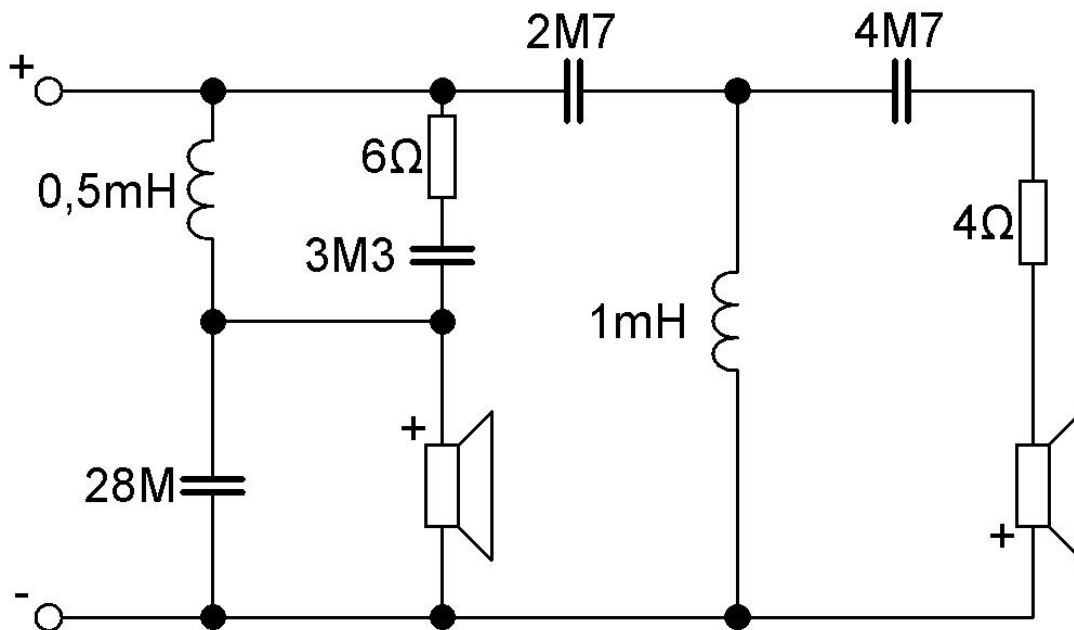


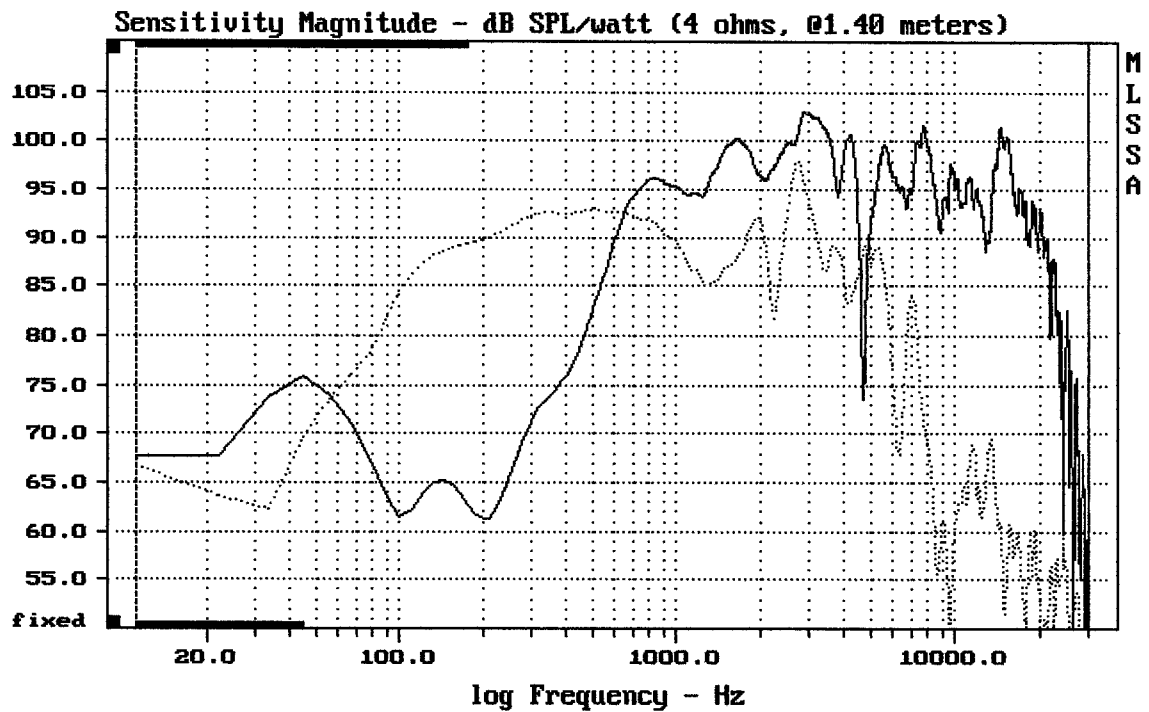
Sestava Fane DX10 4/ohm + Selenium D210Ti

Osazení:

- Fane DX10 4/ohm:
<http://eshop.prodance.cz/DetailPage.asp?DPG=84990>
- Selenium D210Ti

Schéma výhybky:

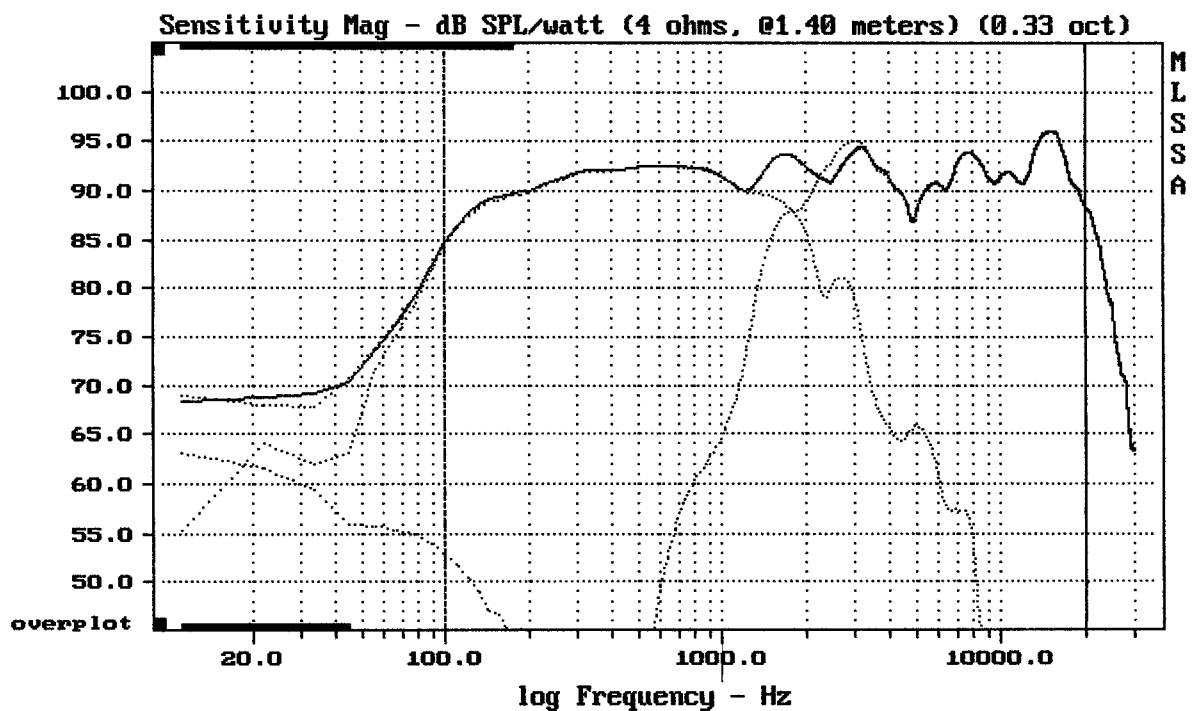




CURSOR: $dy = -10.1401$ $x = 30007.1014$ (2704)

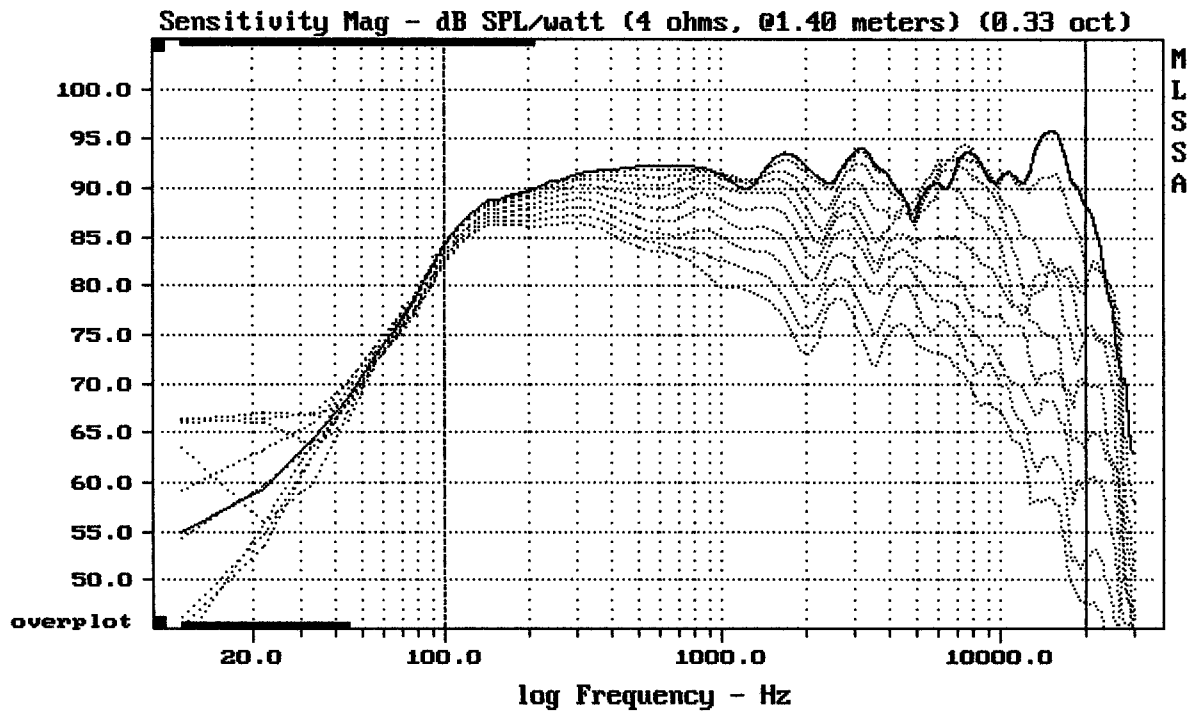
DX10/4 + D210TI

MLSSA: Frequency Domain



Level (100:19997 Hz) = 91.83 dB SPL/watt (4 ohms, @1.40 meters) (0.33 oct)

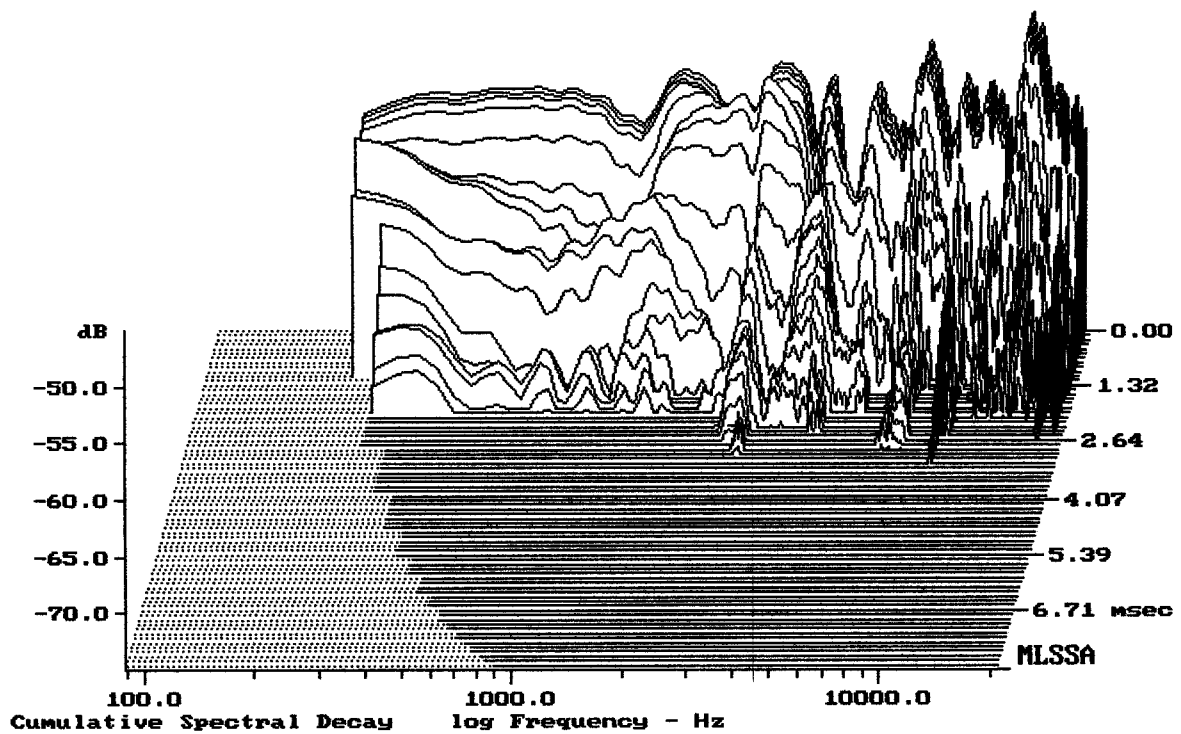
DX10/4 + D210TI



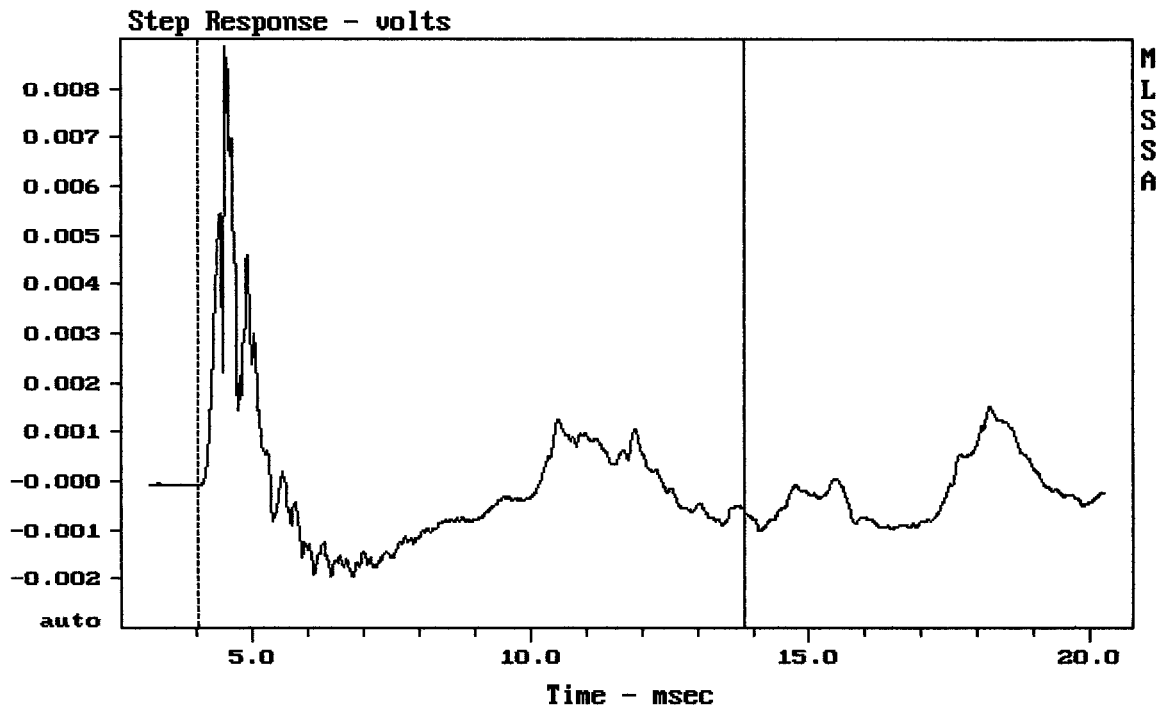
Overlay Compare: dev= +25/-15, std= 11, avg= -27

DX10/4 + D210TI

MLSSA: Frequency Domain



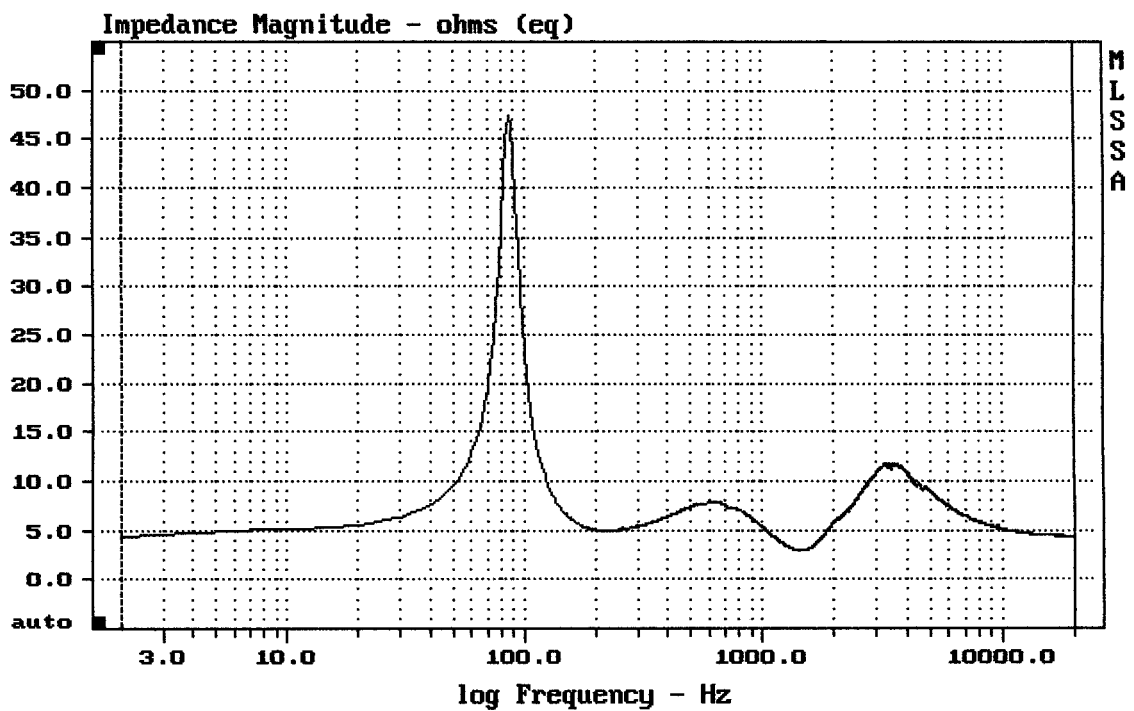
-72.95 dB, 2841 Hz (64), 2.860 msec (27)



mean: $-5.954e-005$, rms: 0.001612, std: 0.001611, max: 0.008845, min: -0.001955

DX10/4 + D210TI

MLSSA: Time Domain



mean: 5.958, rms: 6.417, std: 2.382, max: 47.38, min: 2.892

DX10/4 + D210TI