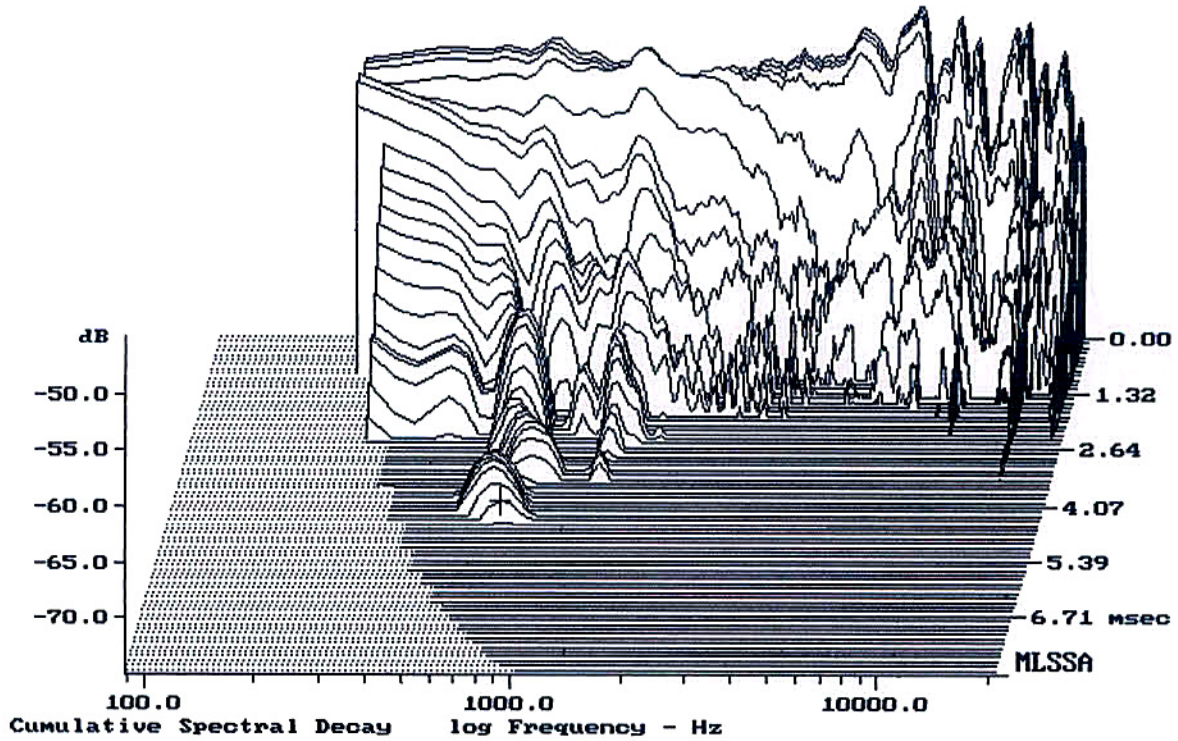


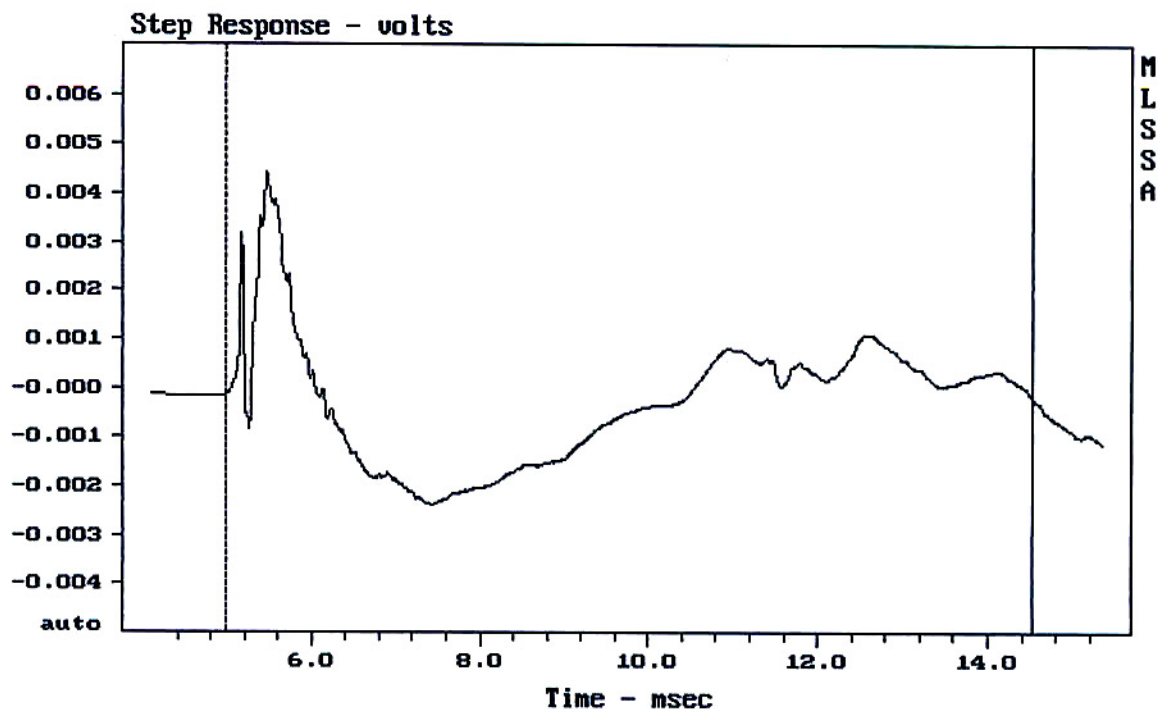
mean: 97.26, rms: 97.73, std: 2.53, max: 102.45, min: 87.57

SRM450 U2

MLSSA: Frequency Domain



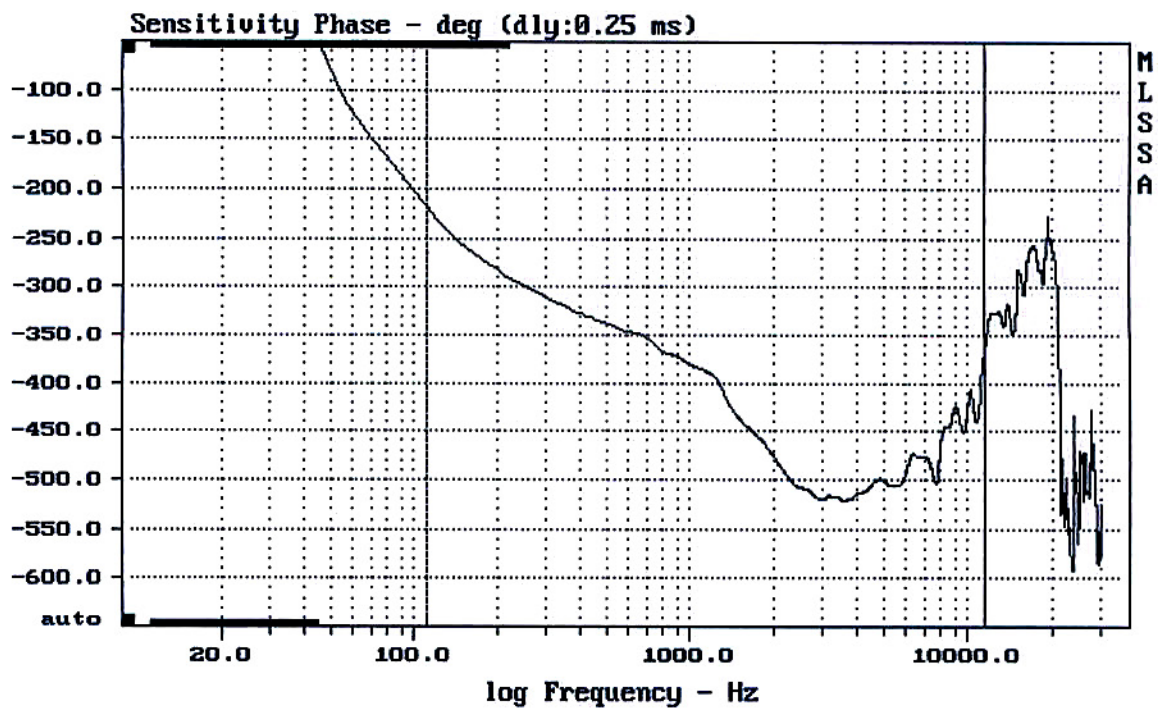
-73.27 dB, 710 Hz (16), 4.400 msec (41)



mean: -0.0002749, rms: 0.001313, std: 0.001284, max: 0.00441, min: -0.002389

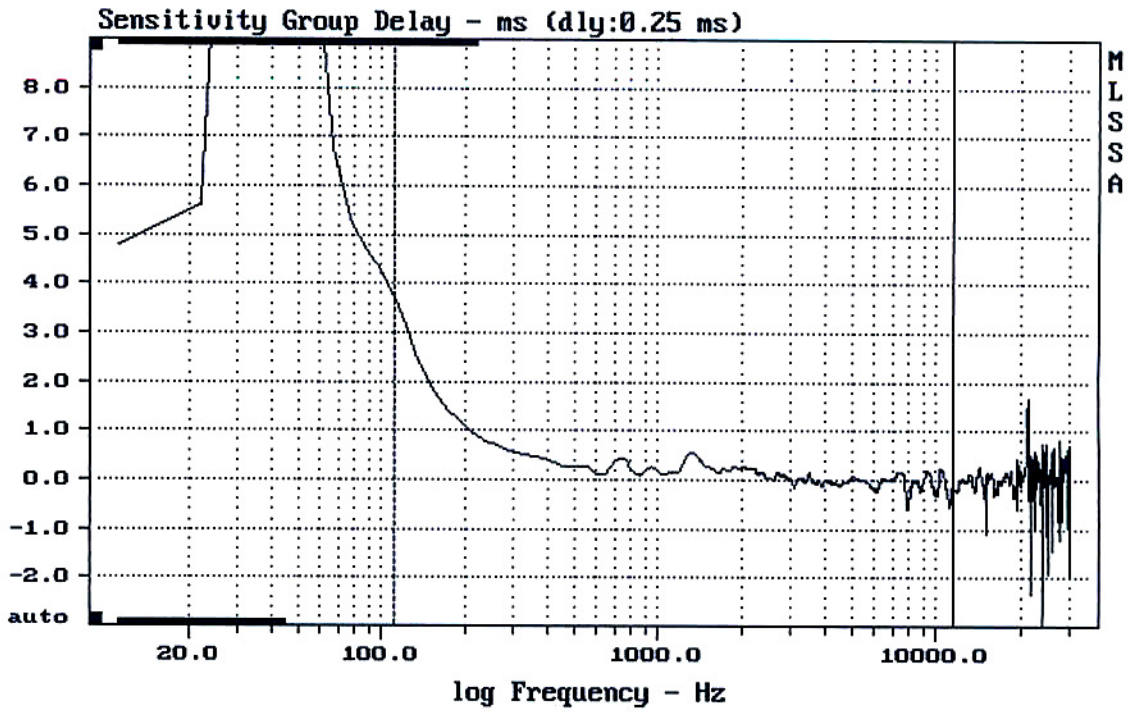
SRM450 U2

MLSSA: Time Domain



mean: -459.3, rms: 462.4, std: 53.48, max: -218.4, min: -521.8

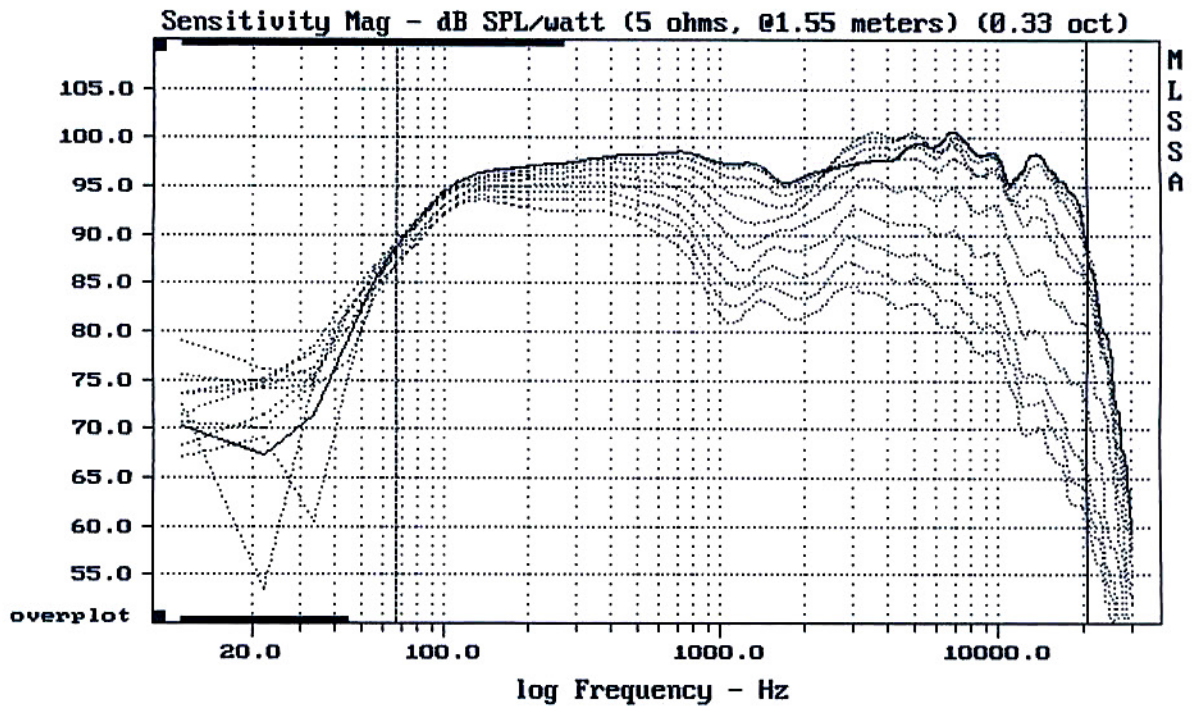
SRM450 U2



mean: 0.03936, rms: 0.2922, std: 0.2895, max: 3.753, min: -0.5931

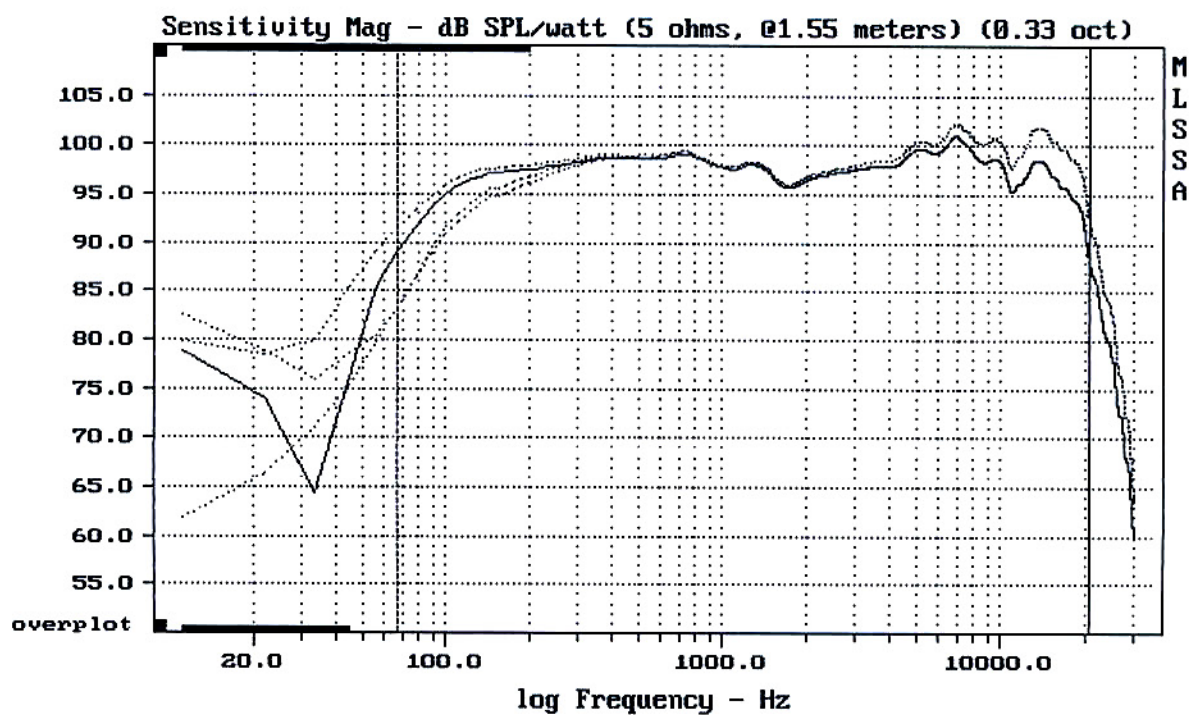
SRM450 U2

MLSSA: Frequency Domain



Overlay Compare: dev= +20/-9.5, std= 6.8, avg= -22

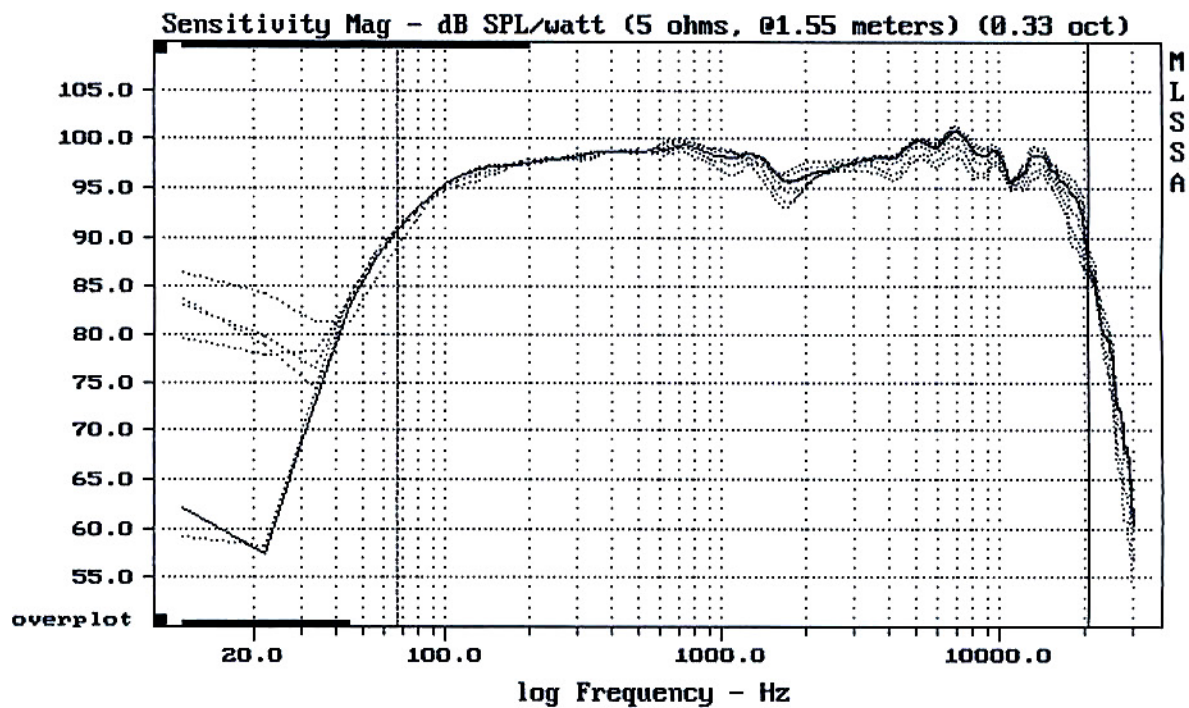
SRM450 U2



mean: 99.56, rms: 99.73, std: 1.54, max: 102.28, min: 83.40

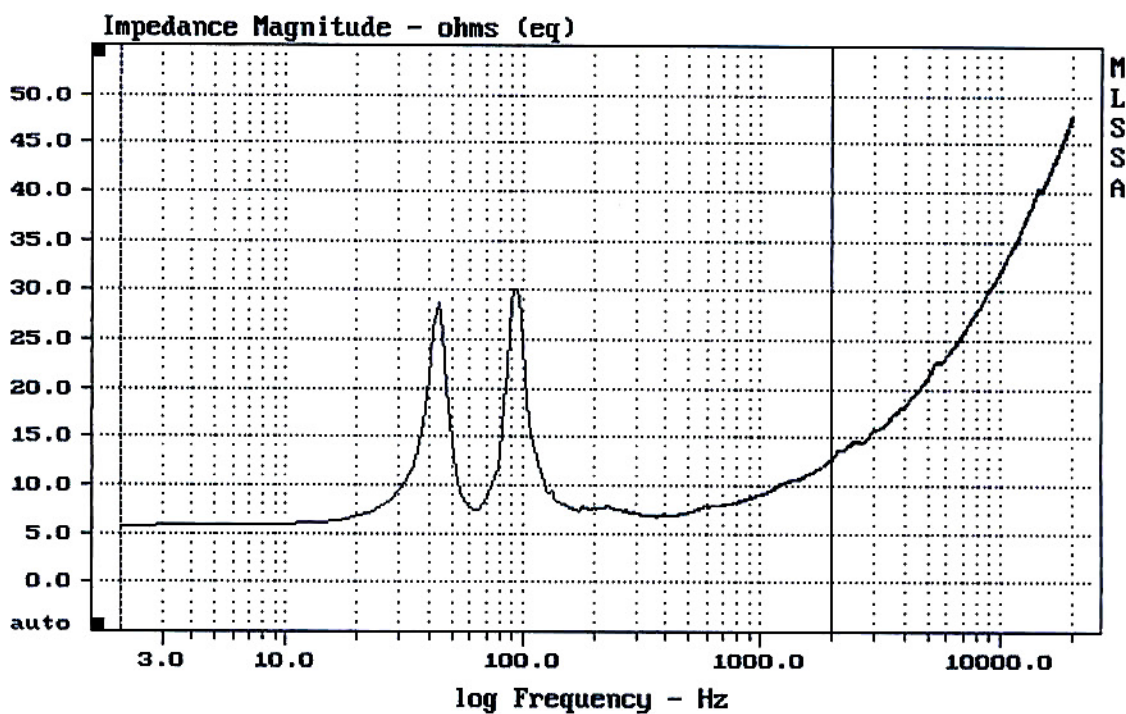
SRM450 U2

MLSSA: Frequency Domain



mean: 98.00, rms: 98.19, std: 1.64, max: 101.37, min: 89.12

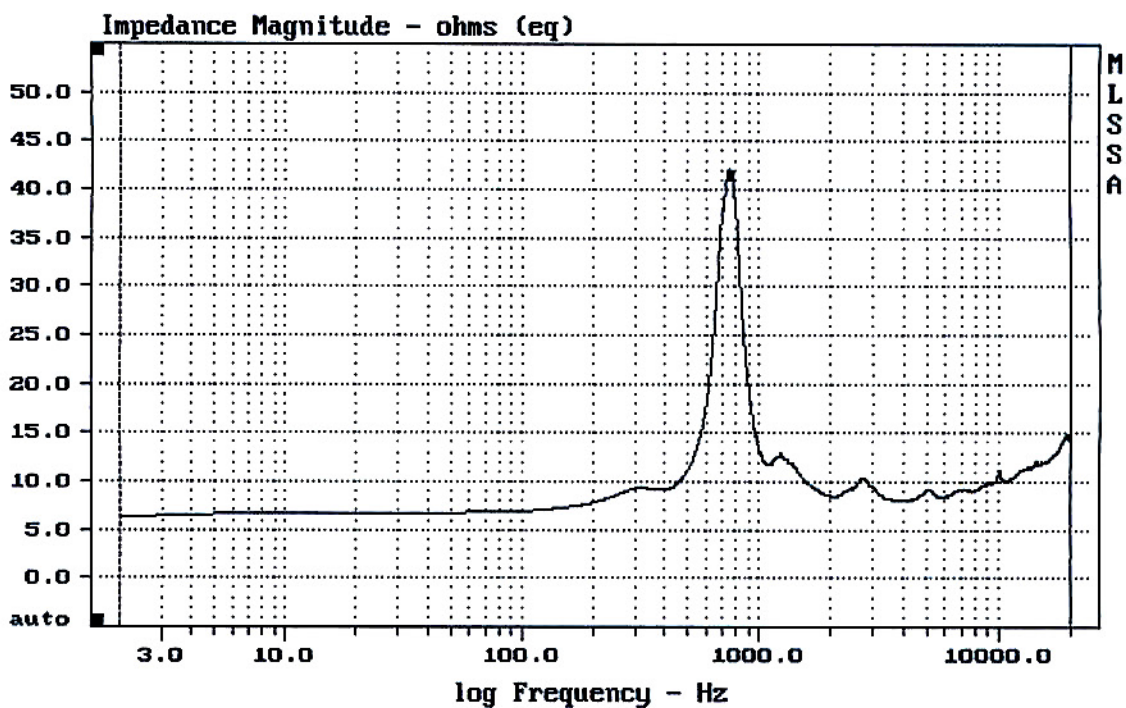
SRM450 U2



mean: 9.745, rms: 10.12, std: 2.734, max: 30.11, min: 5.69

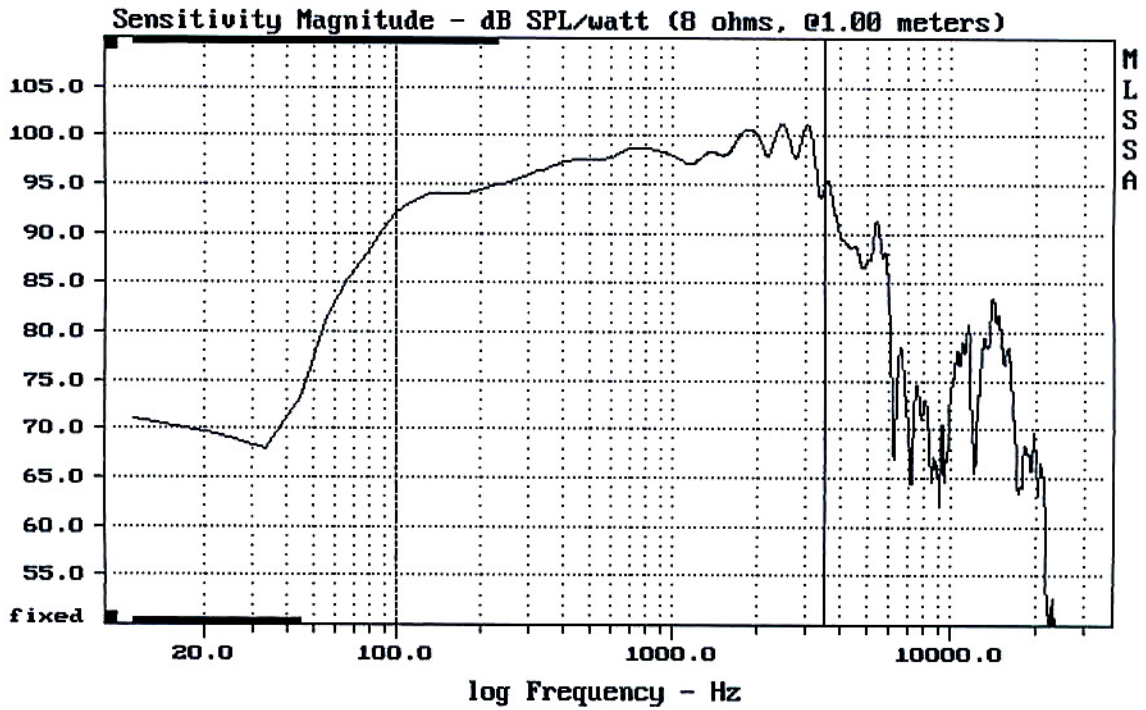
SRM450 U2

MLSSA: Frequency Domain



mean: 11.04, rms: 11.53, std: 3.322, max: 42.13, min: 6.356

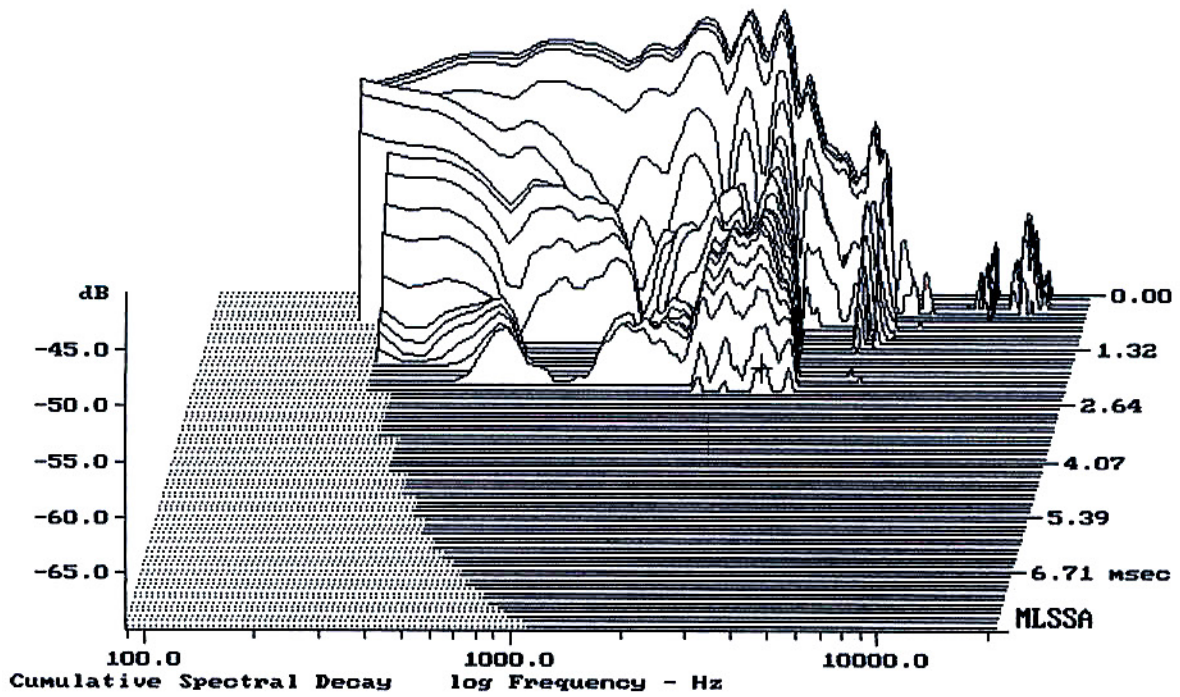
SRM450 U2



Level (100:3507 Hz) = 97.46 dB SPL/watt (8 ohms, @1.00 meters)

12" LN12/3002-8 FROM SRM450 U2

MLSSA: Frequency Domain



-68.04 dB, 3152 Hz (71), 2.310 msec (22)

MLSSA SPO 4.0D #960903-3057-3075

Measured Data

QC Limits

Line	Parameter	Value	Units
1	RMSE-free	0.53	Ohms
2	Fs	73.14	Hz
3	Re	5.56	Ohms[dc]
4	Res	66.57	Ohms
5	Qms	6.95	
6	Qes	0.58	
7	Qts	0.54	
8	L1	0.61	mH
9	L2	0.93	mH
10	R2	2.84	Ohms
11	RMSE-load	0.75	Ohms
12	Vas(Sd)	50.57	liters
13	Mms	37.07	grams
14	Cms	128	μ M/Newton
15	B1	12.77	Tesla-M
16	SPLref(Sd)	97.2	dB[Re]
17	Rub-index	0.02	

Method: Mass-loaded (60.00 grams)

Area (Sd): 530.93 sq cm

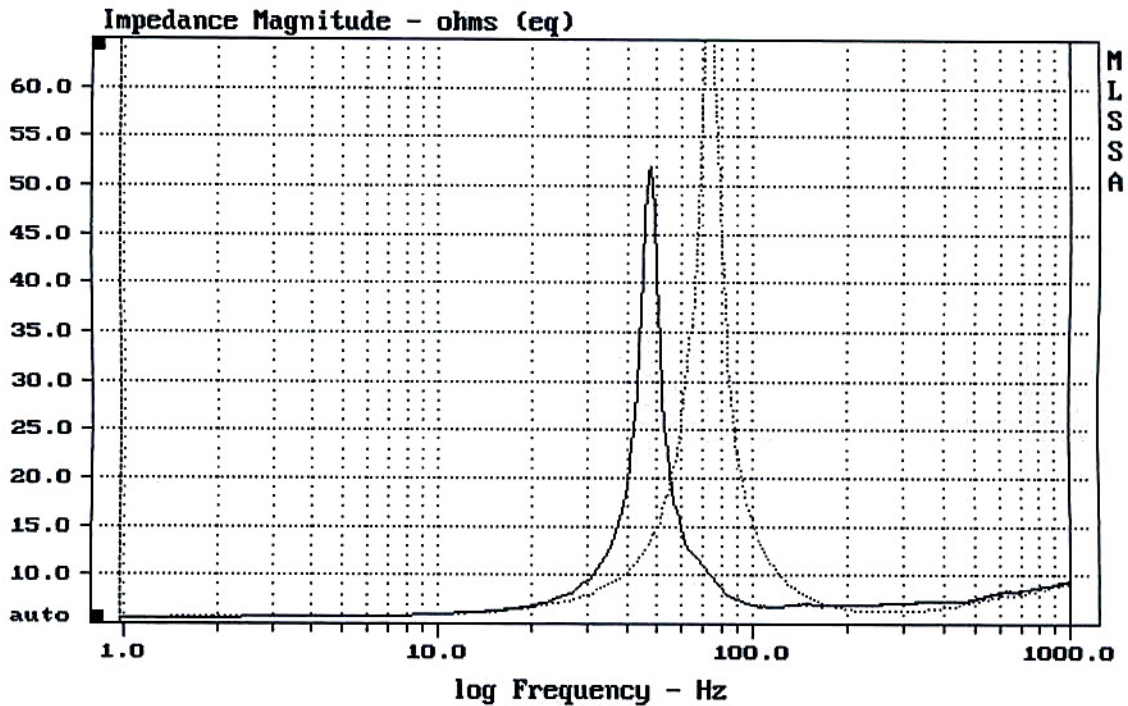
DCR mode: Measure (-0.09 ohms)

QC file: CLOSED

Analysis successful. Shift in Fs = -35.5% (-20% to -50% is recommended).

12" LN12/3002-8 FROM SRM450 V2

MLSSA: Parameters



mean: 9.122, rms: 11.57, std: 7.119, max: 72.15, min: 5.638

MLSSA: Frequency Domain