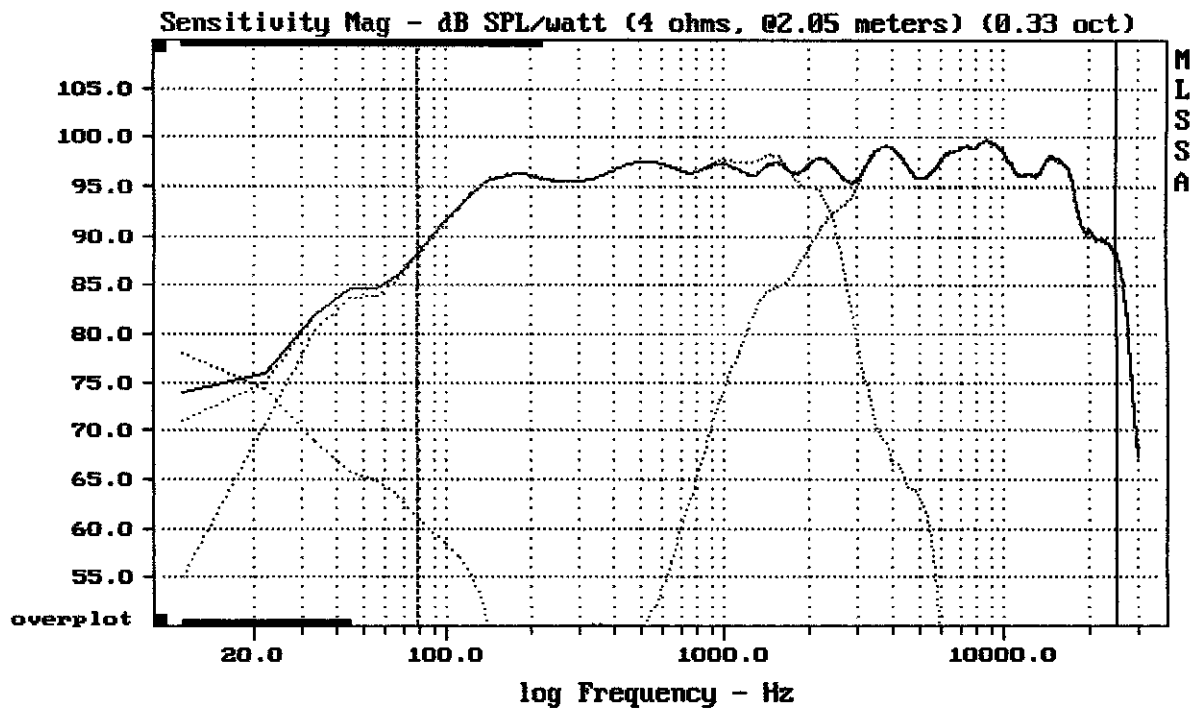


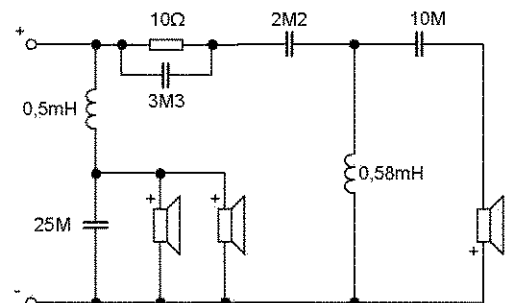
CURSOR: dy = -15.871 x = 30007.1014 (2704)

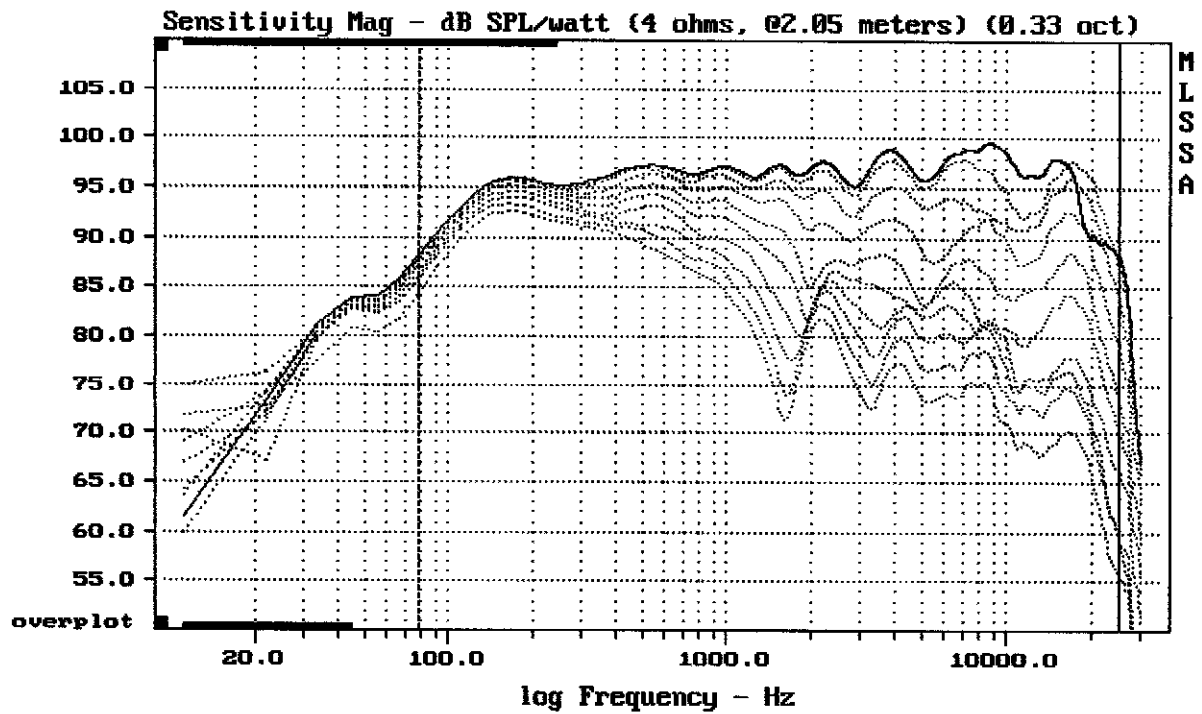
2xDELTA 12LF + D210TI + A7065



Level (78:25002 Hz) = 96.60 dB SPL/watt (4 ohms, @2.05 meters) (0.33 oct)

2xDELTA 12LF + D210TI + A7065

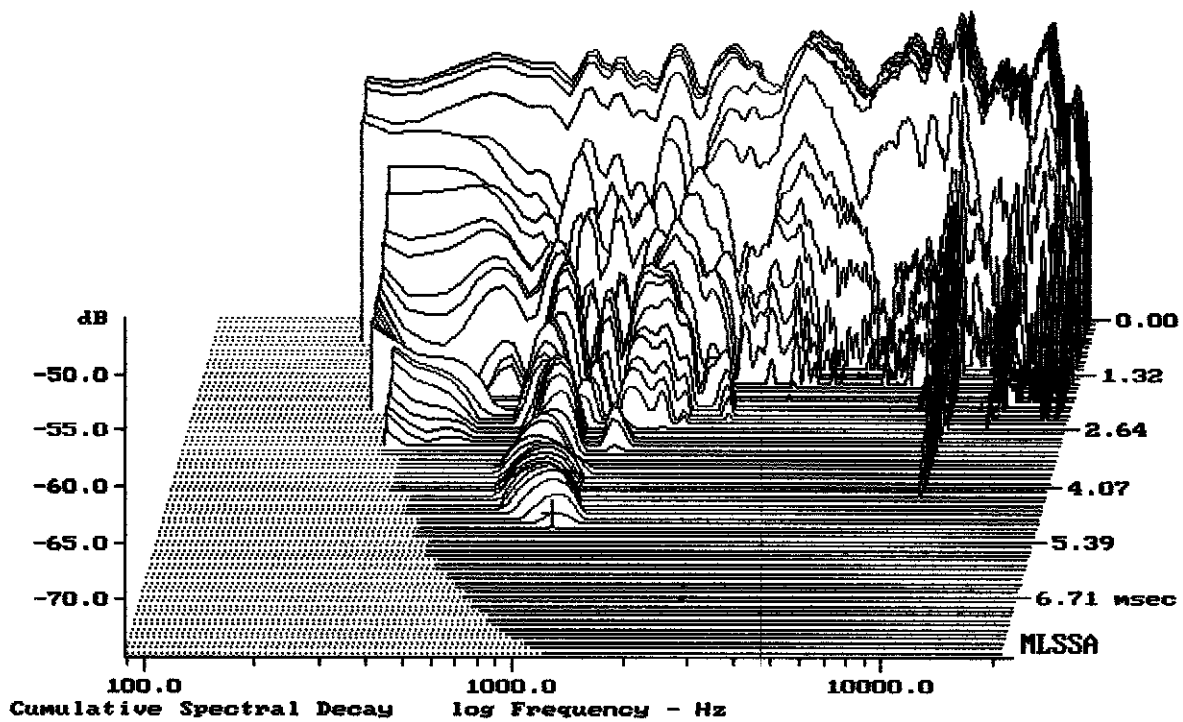




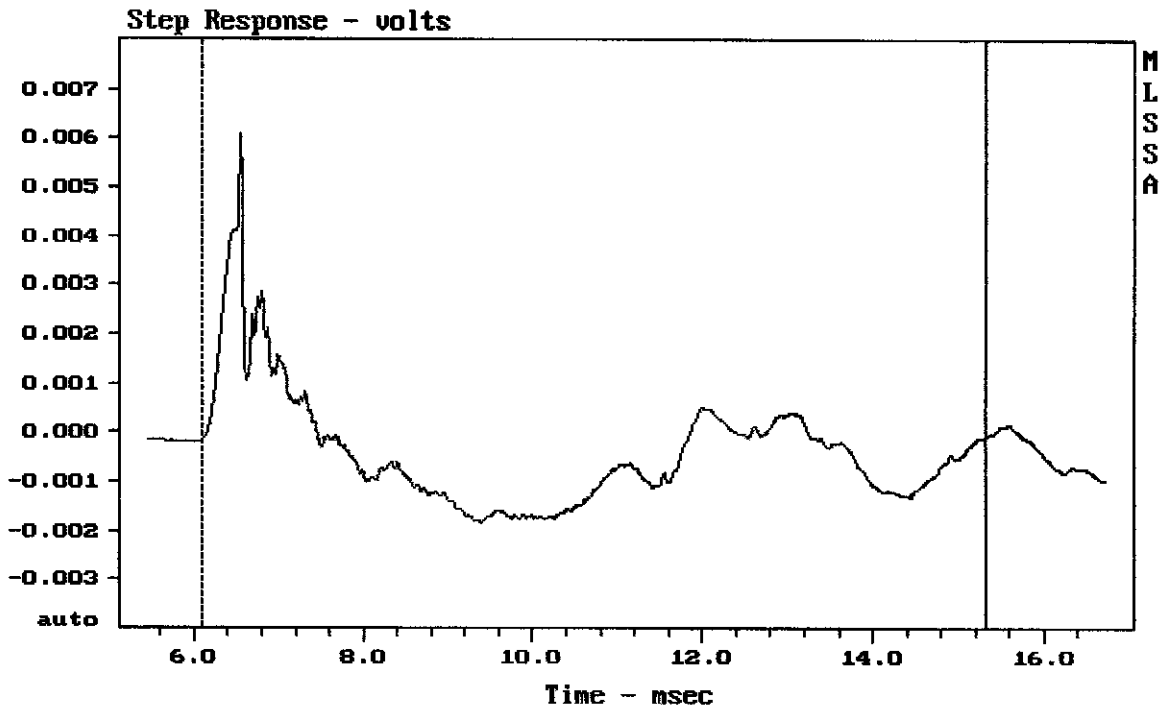
Overlay Compare: dev= +22/-7.3, std= 5.1, avg= -25

2xDELTA 12LF + D210T1 + A7065

MLSSA: Frequency Domain



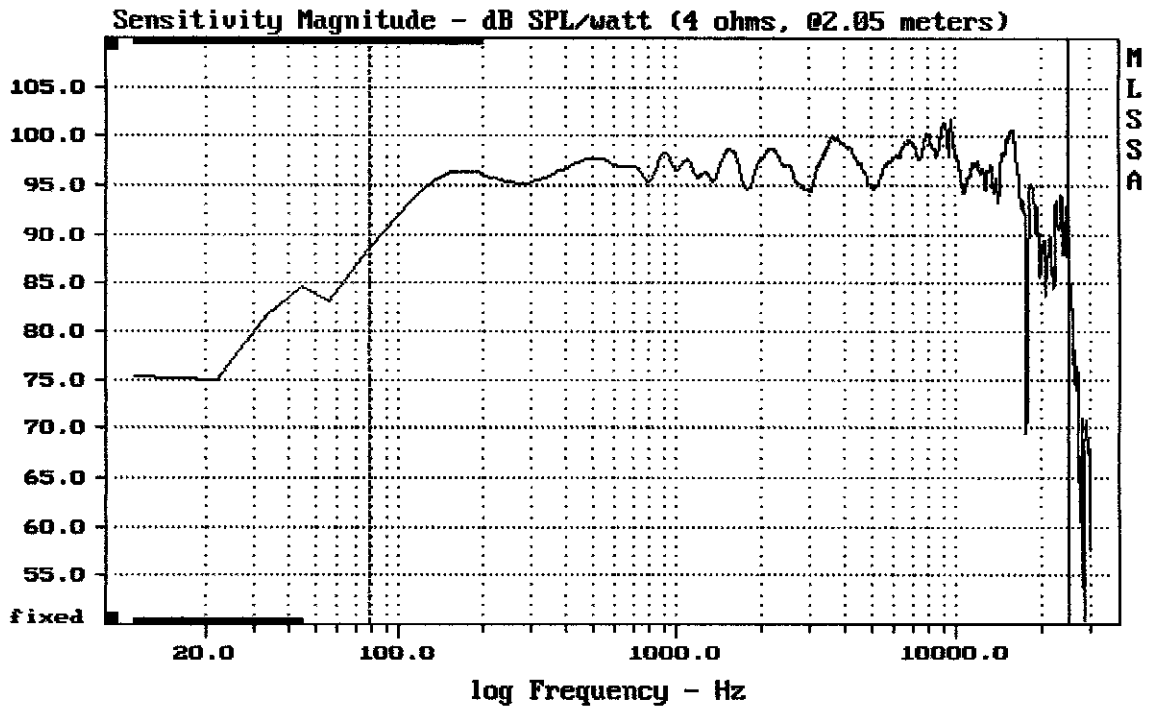
-74.09 dB, 1021 Hz (23), 4.950 msec (46)



mean: -0.0004016, rms: 0.001235, std: 0.001168, max: 0.006091, min: -0.001811

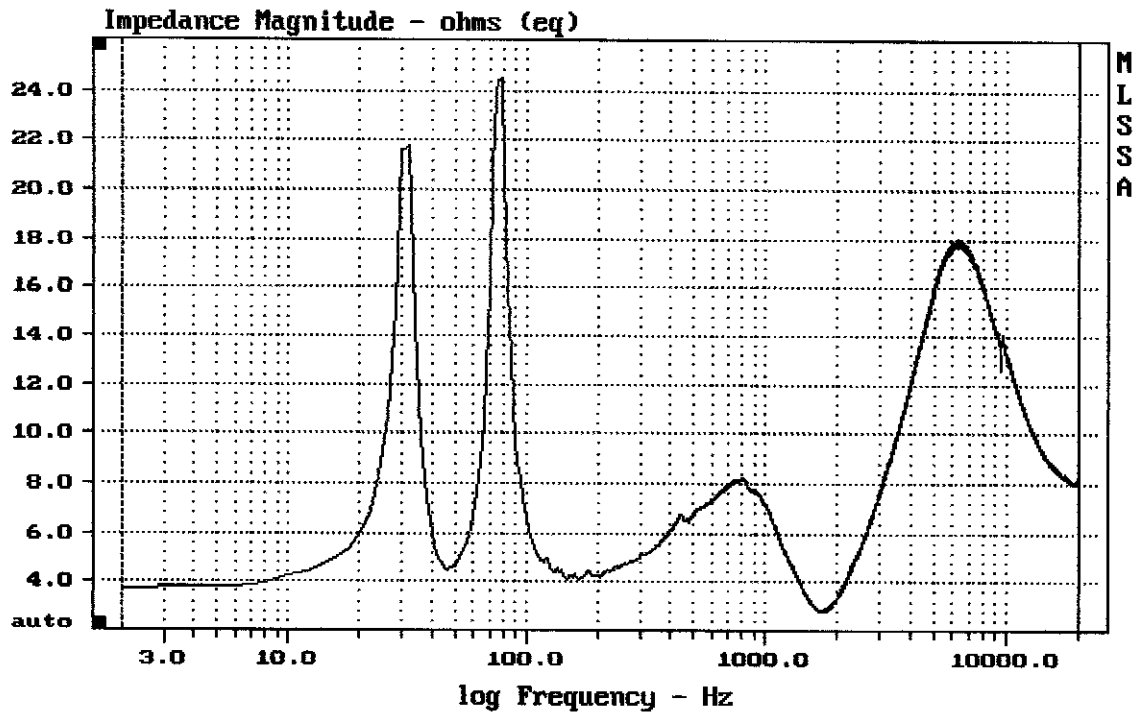
2xDELTA 12LF + D210TI + A7065

MLSSA: Time Domain



Level (70:2500 Hz) = 96.68 dB SPL/watt (4 ohms, @2.05 meters)

2xDELTA 12LF + D210TI + A7065



2xDELTA 12LF + D210TI + A7065

MLSSA: Frequency Domain

