

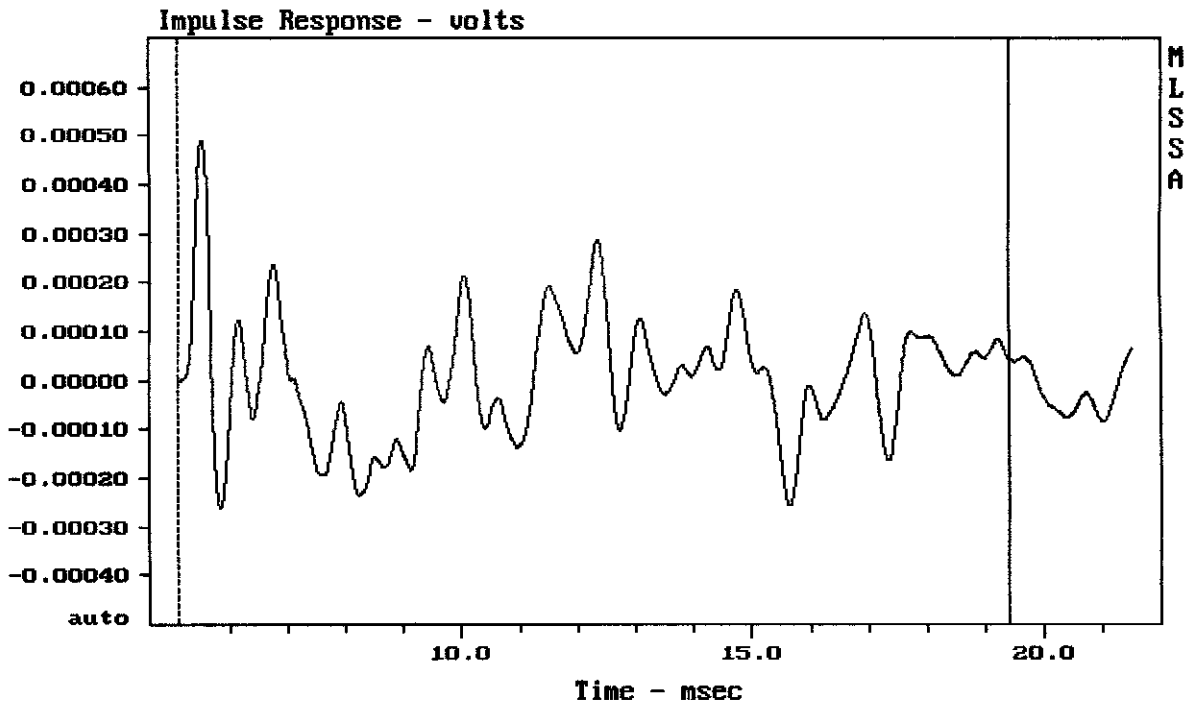
---

Level (44:200 Hz) = 99.40 dB SPL/watt (4 ohms, @1.50 meters) (0.33 oct)

---

RCF 4PRO 8002-AS

MLSSA: Frequency Domain

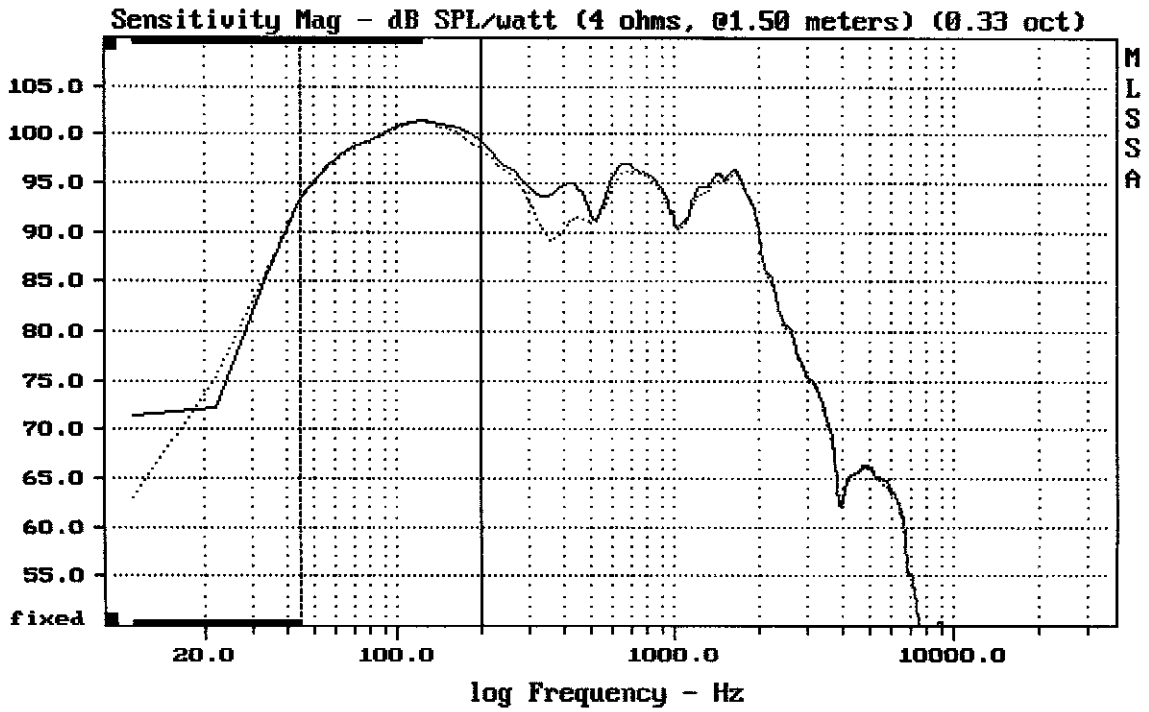


---

mean: 6.259e-006, rms: 0.0001263, std: 0.0001261, max: 0.0004879, min: -0.0002

---

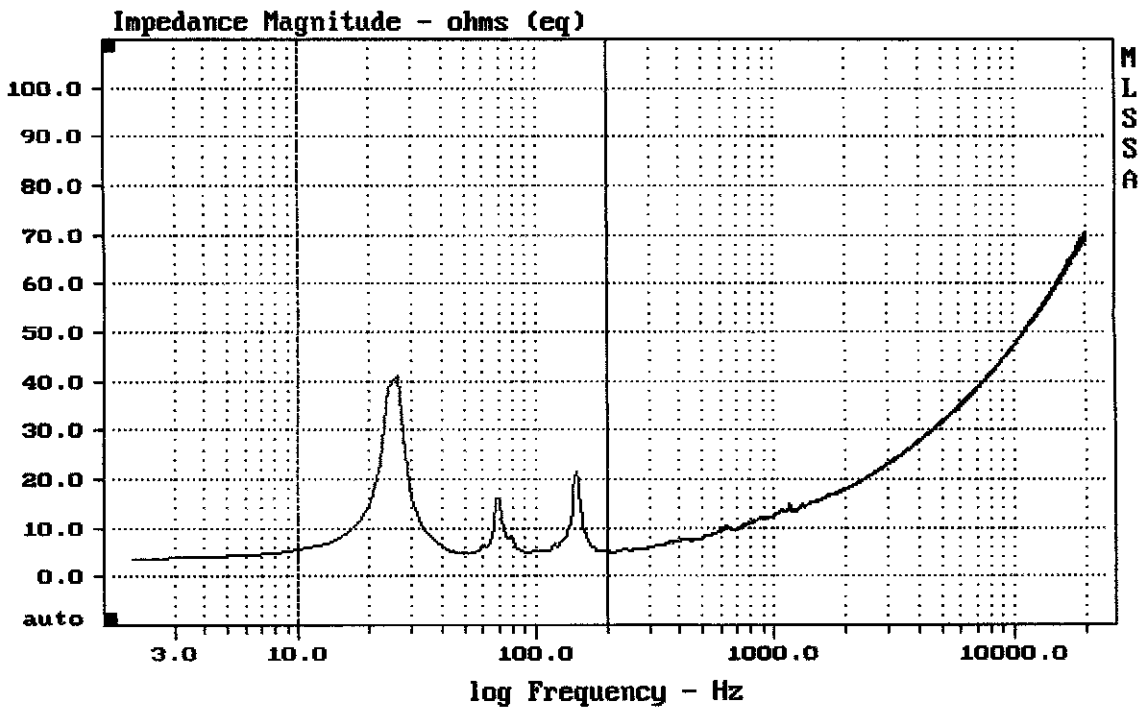
RCF 4PRO 8002-AS



Overlay Compare: dev= +0.54/-0.27, std= 0.3, avg= 0.31

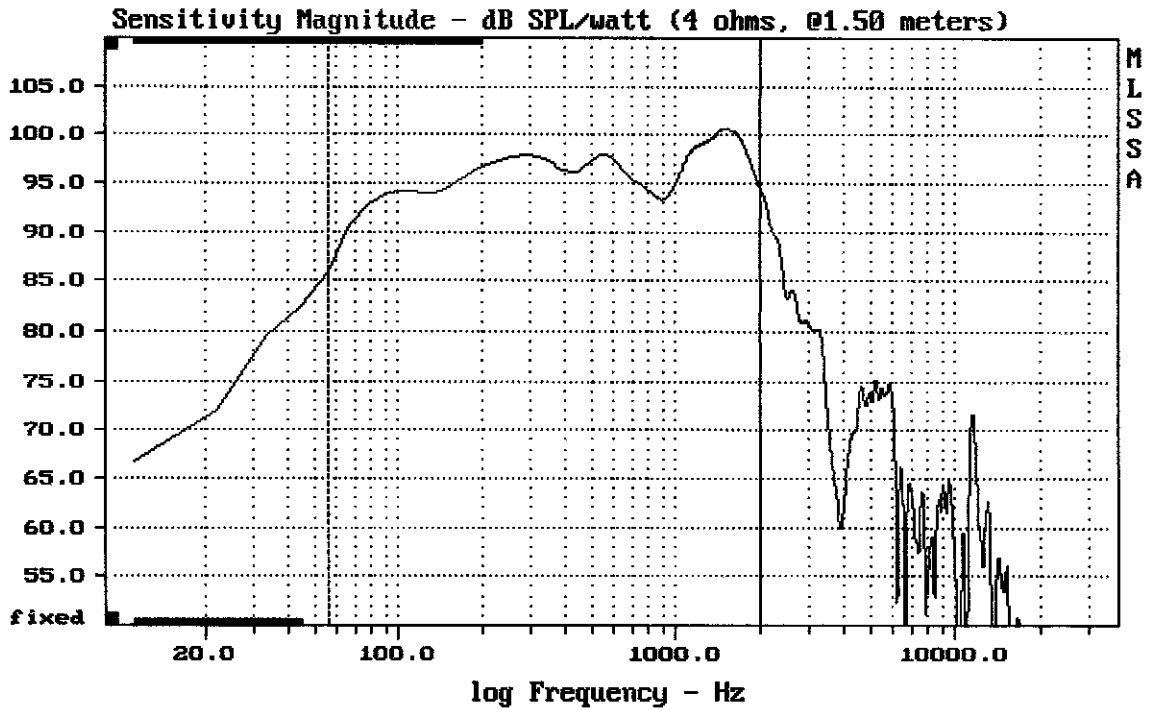
RCF 4PRO 8002-AS

MLSSA: Frequency Domain



mean: 8.881, rms: 10.93, std: 6.374, max: 40.9, min: 4.722

RCF 4PRO 8002-AS



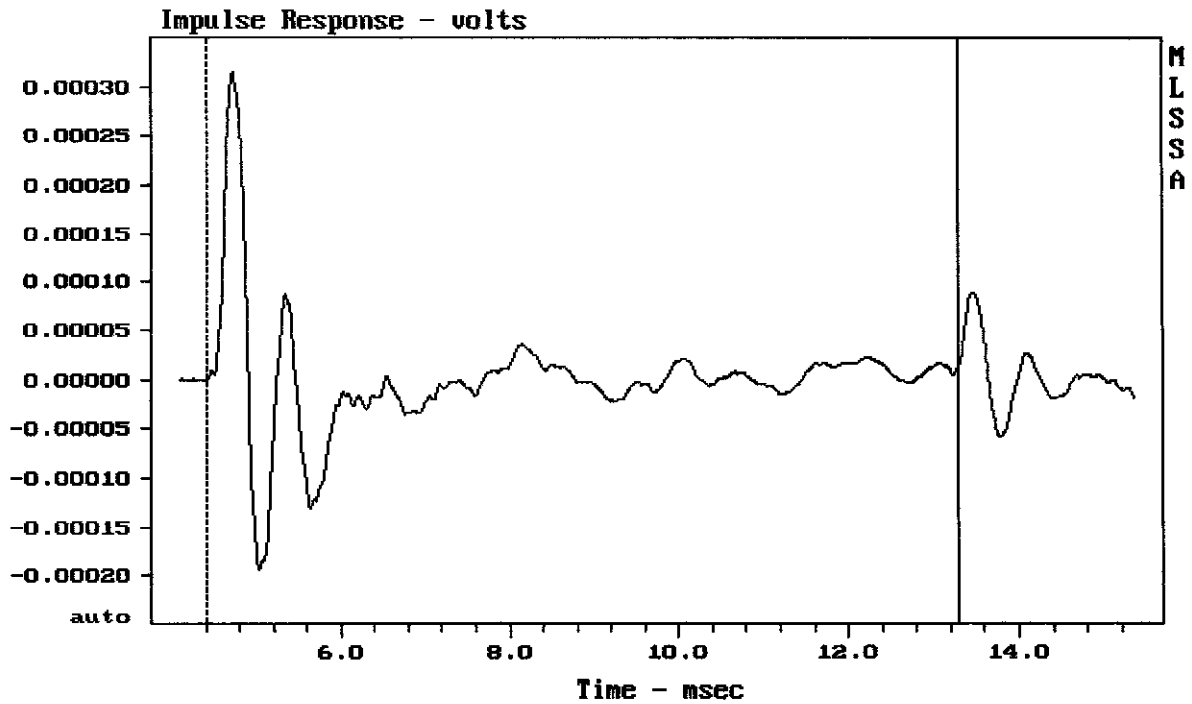
---

Level (55:1998 Hz) = 96.40 dB SPL/watt (4 ohms, @1.50 meters)

---

18" RCF FROM 4PRO 8002-AS

MLSSA: Frequency Domain



---

mean: 4.91e-007, rms: 5.968e-005, std: 5.968e-005, max: 0.000314, min: -0.0001

---

18" RCF FROM 4PRO 8002-AS

MLSSA SPO 4.0D #960903-3057-3075

Measured Data

QC Limits

Line	Parameter	Value	Units
1	RMSE-free	0.50	Ohms
2	Fs	38.14	Hz
3	Re	3.32	Ohms[dc]
4	Res	96.29	Ohms
5	Qms	9.17	
6	Qes	0.32	
7	Qts	0.31	
8	L1	0.90	mH
9	L2	1.75	mH
10	R2	7.31	Ohms
11	RMSE-load	0.80	Ohms
12	Vas(Sd)	215.61	liters
13	Mms	170.19	grams
14	Cms	102	$\mu$ M/Newton
15	B1	20.70	Tesla-M
16	SPLref(Sd)	97.6	dB[Re]
17	Rub-index	0.00	

Method: Mass-loaded (120.00 grams)

Area (Sd): 1225.00 sq cm

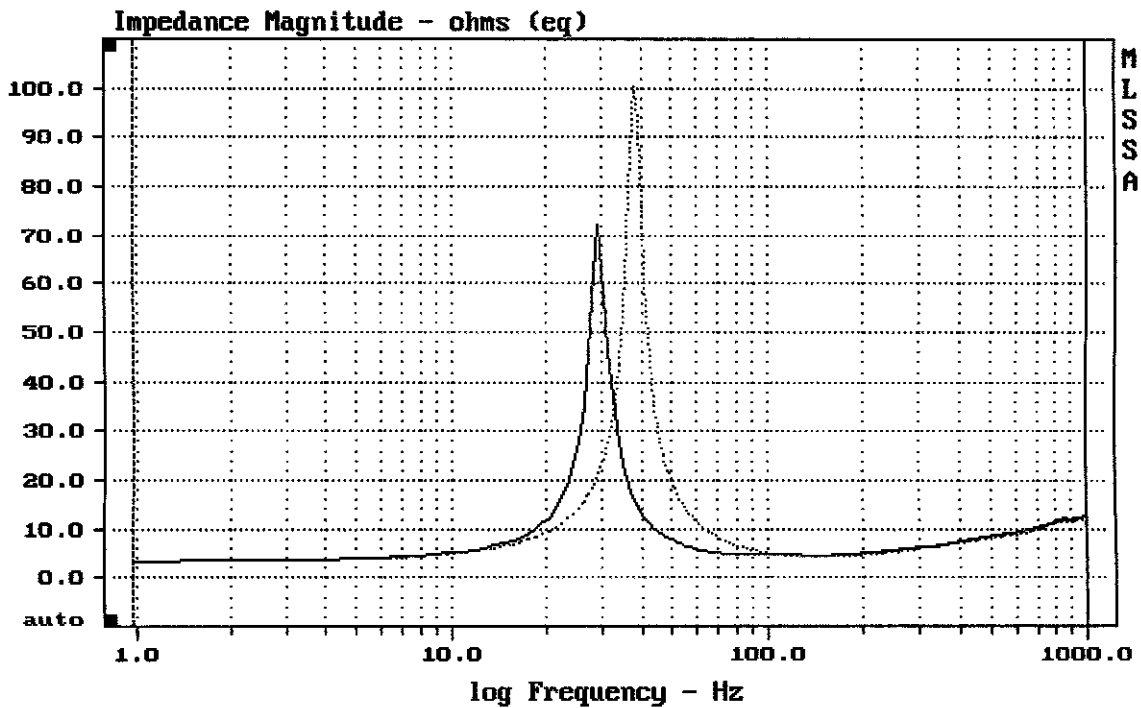
DCR mode: Measure (-0.06 ohms)

QC file: CLOSED

Analysis successful. Shift in Fs = -23.4% (-20% to -50% is recommended).

18" RCF FROM 4PRO 8002-AS

MLSSA: Parameters



mean: 9.201, rms: 11.54, std: 6.961, max: 100.2, min: 3.376

MLSSA: Frequency Domain