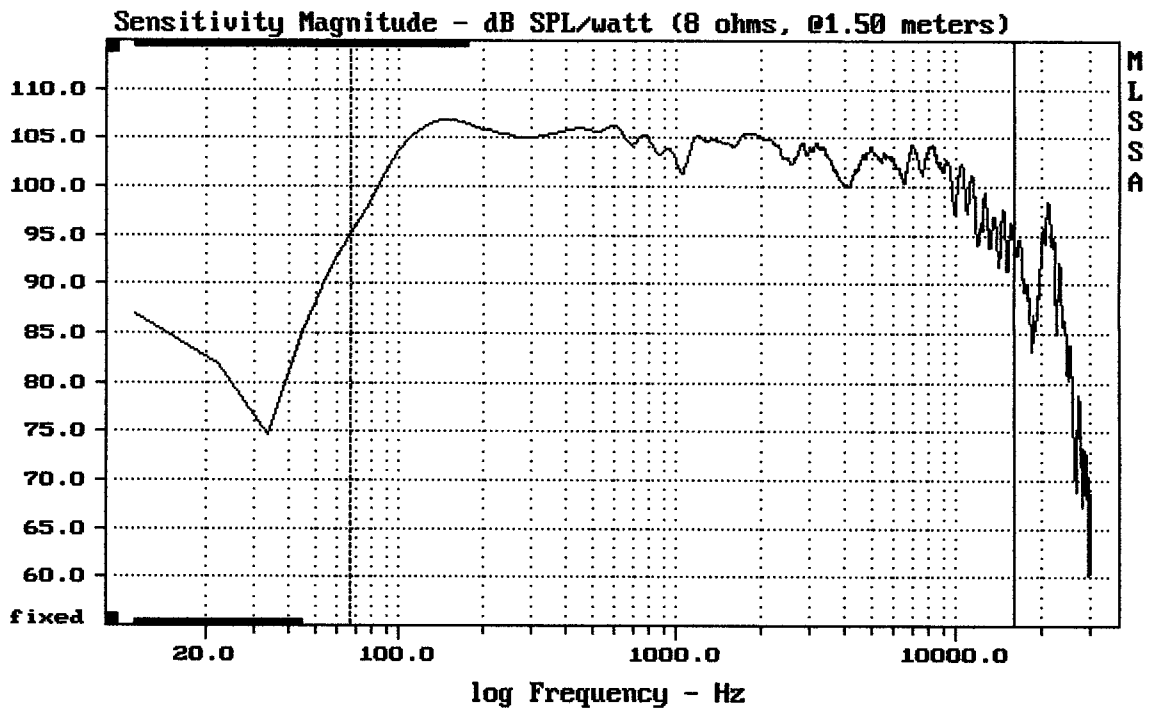


mean: 102.69, rms: 103.47, std: 3.19, max: 109.24, min: 94.47

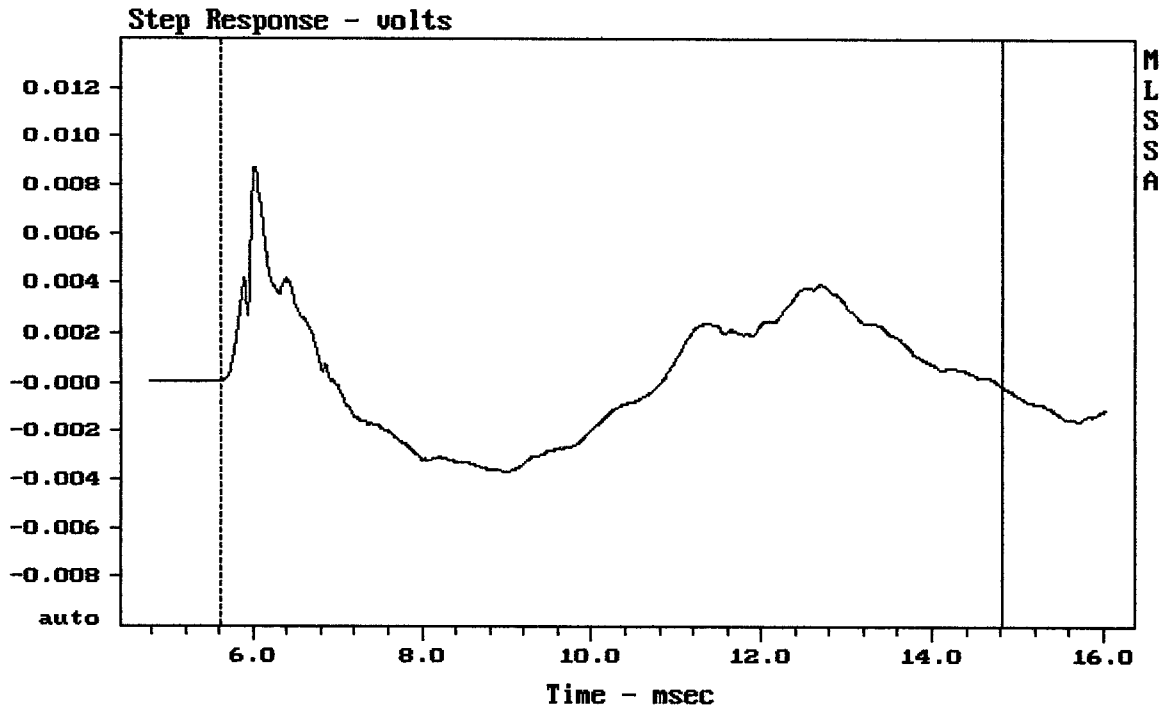
RCF 4PRO 3001-A ORIG.

MLSSA: Frequency Domain



mean: 101.29, rms: 101.84, std: 2.74, max: 106.77, min: 91.43

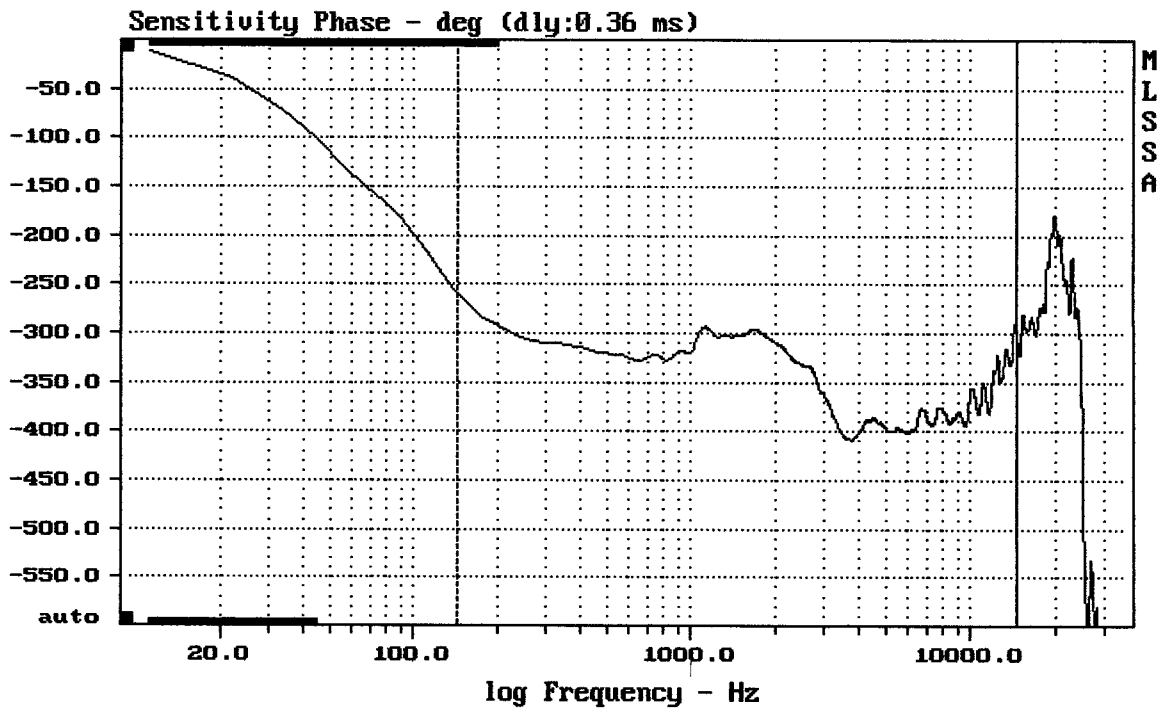
RCF 4PRO 3001-A ORIG.



mean: 0.0003022, rms: 0.002632, std: 0.002614, max: 0.00874, min: -0.003688

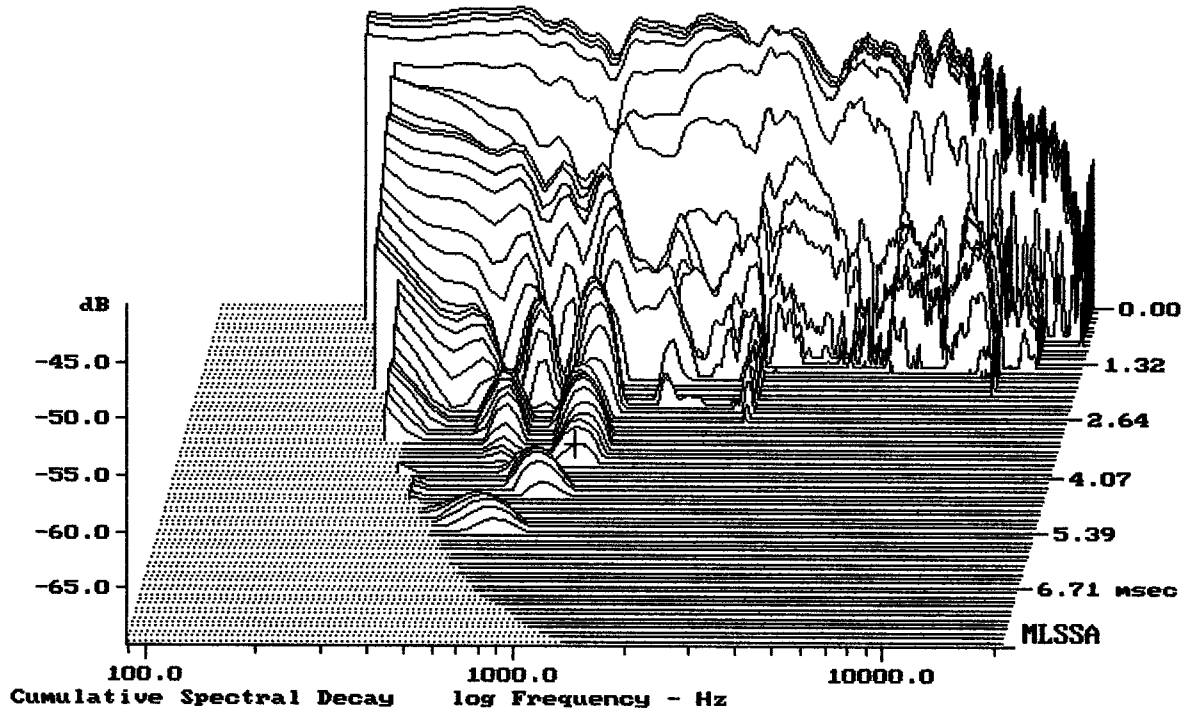
RCF 4PRO 3001-A ORIG.

MLSSA: Time Domain



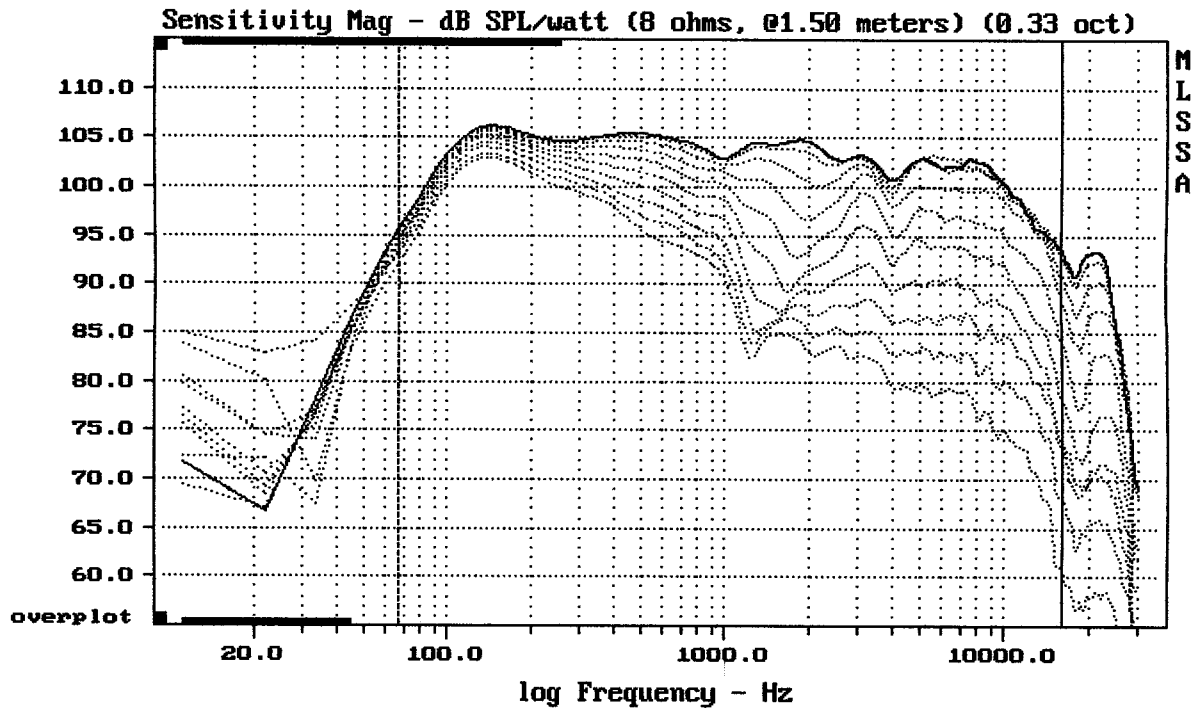
mean: -360.5, rms: 362.1, std: 34.36, max: -258.9, min: -408.5

RCF 4PRO 3001-A ORIG.



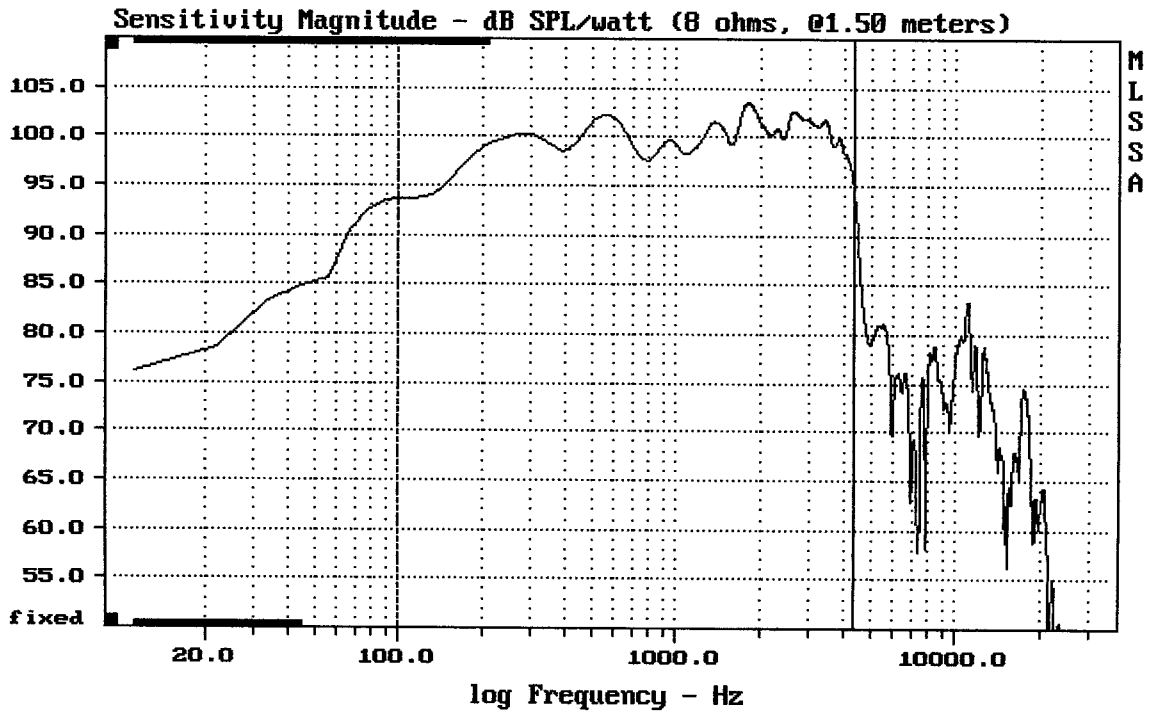
-68.42 dB, 1065 Hz (24), 3.740 msec (35)

DTTO



Overlay Compare: dev= +21/-9.6, std= 5.1, avg= -24

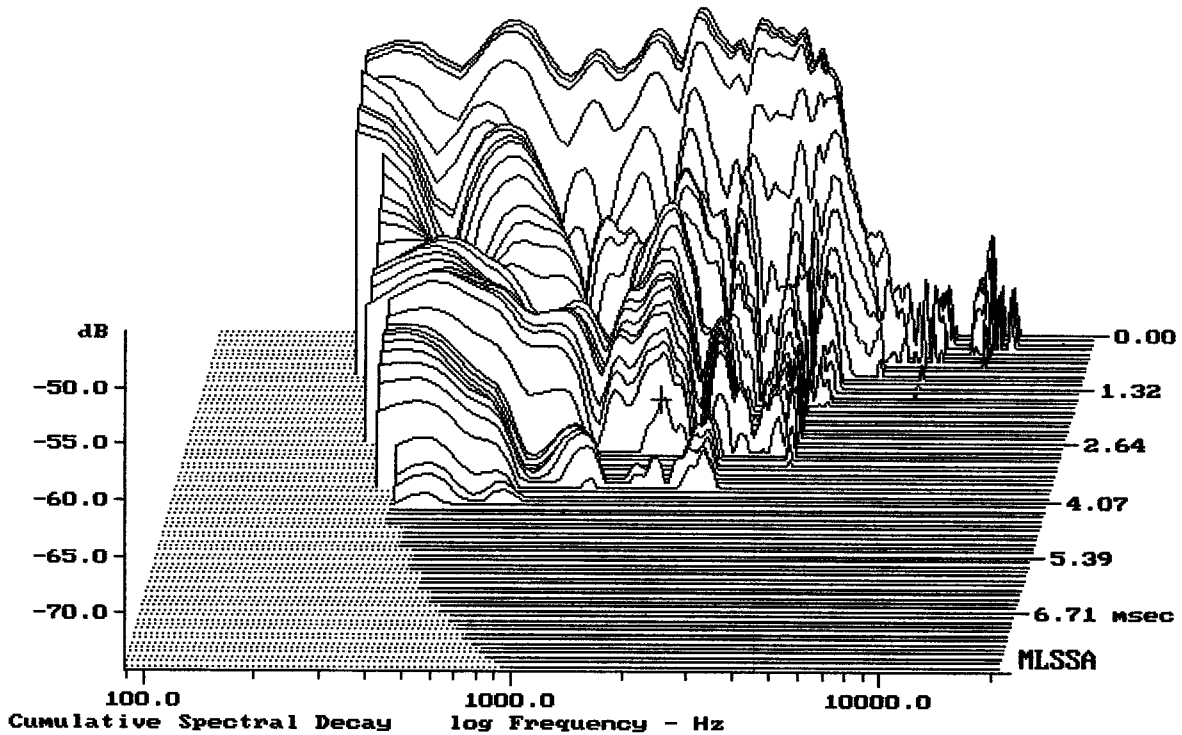
RCF 4PRO 3001-A ORIG.



Level (100:4306 Hz) = 99.78 dB SPL/watt (8 ohms, @1.50 meters)

15" RCF 4PRO 3001-A

MLSSA: Frequency Domain



-70.44 dB, 1731 Hz (39), 2.860 msec (27)

MLSSA SPO 4.0D #960903-3057-3075

Measured Data

QC Limits

Line	Parameter	Value	Units
1	RMSE-free	0.63	Ohms
2	Fs	48.16	Hz
3	Re	5.39	Ohms[dc]
4	Res	116.81	Ohms
5	Qms	7.86	
6	Qes	0.36	
7	Qts	0.35	
8	L1	0.68	mH
9	L2	1.47	mH
10	R2	6.83	Ohms
11	RMSE-load	0.82	Ohms
12	Vas(Sd)	177.51	liters
13	Mms	63.21	grams
14	Cms	173	$\mu\text{M}/\text{Newton}$
15	B1	16.86	Tesla-M
16	SPLref(Sd)	99.2	dB[Re]
17	Rub-index	0.01	

Method: Mass-loaded (80.00 grams)

Area (Sd): 855.30 sq cm

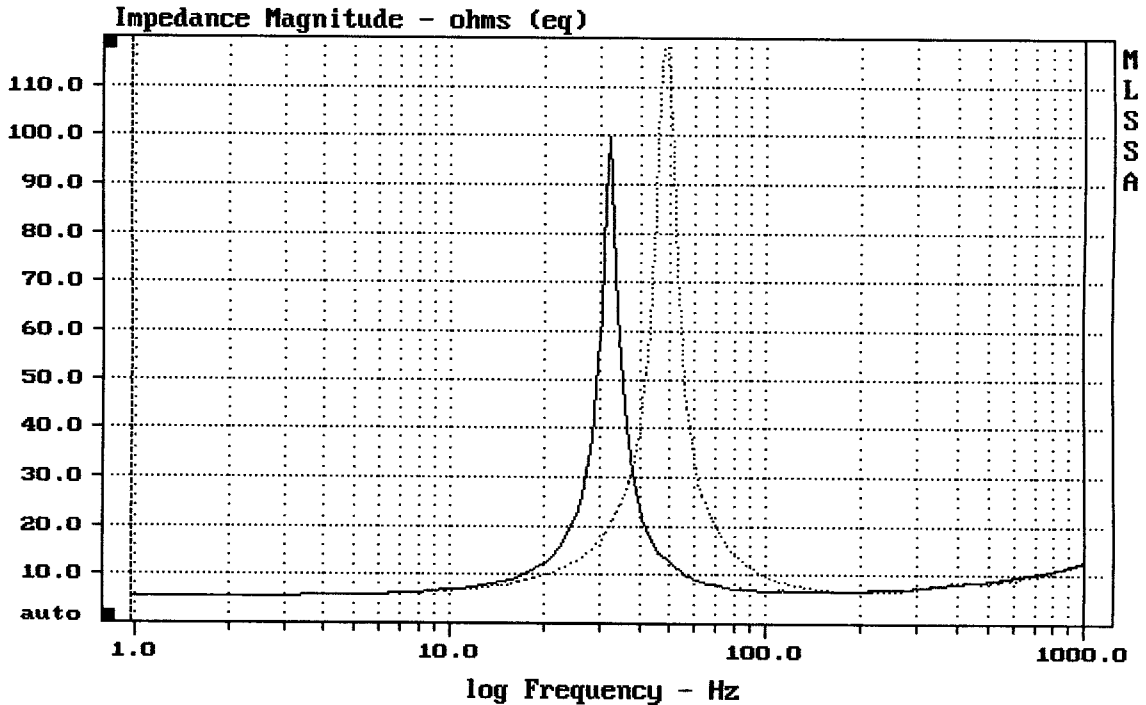
DCR mode: Measure (-0.06 ohms)

QC file: CLOSED

Analysis successful. Shift in Fs = -33.3% (-20% to -50% is recommended).

15" RCF 4PRO 3001-A

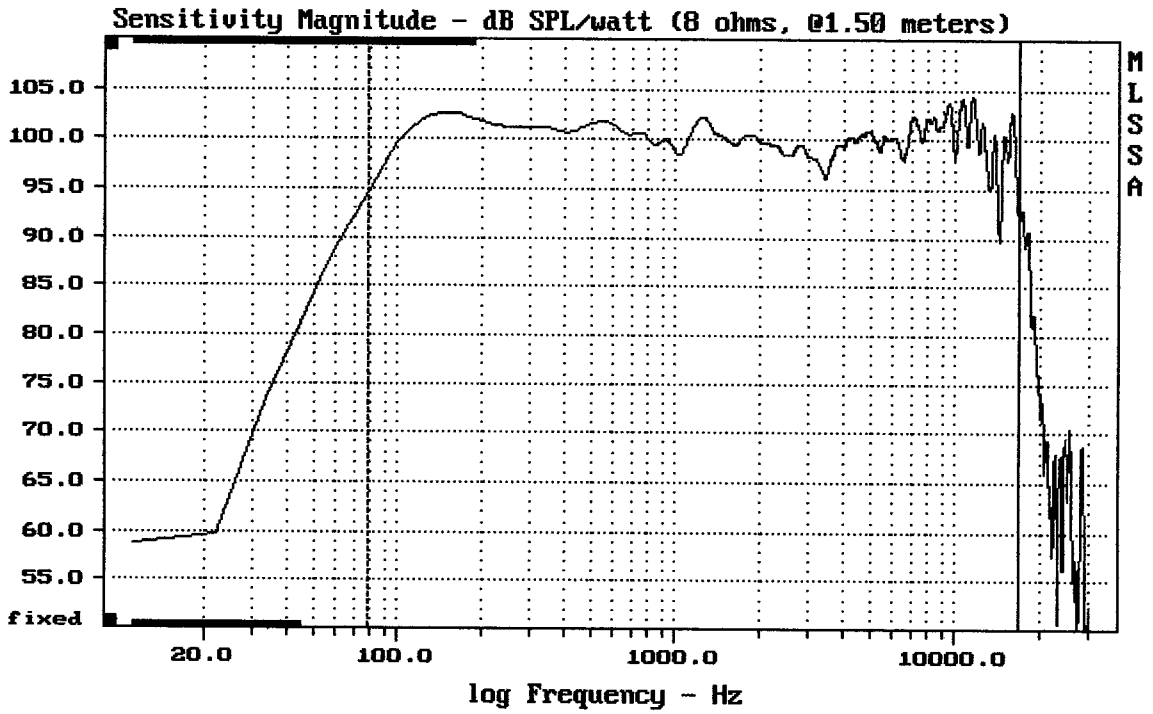
MLSSA: Parameters



mean: 10.86, rms: 14.76, std: 10, max: 118.1, min: 5.451

DTTO

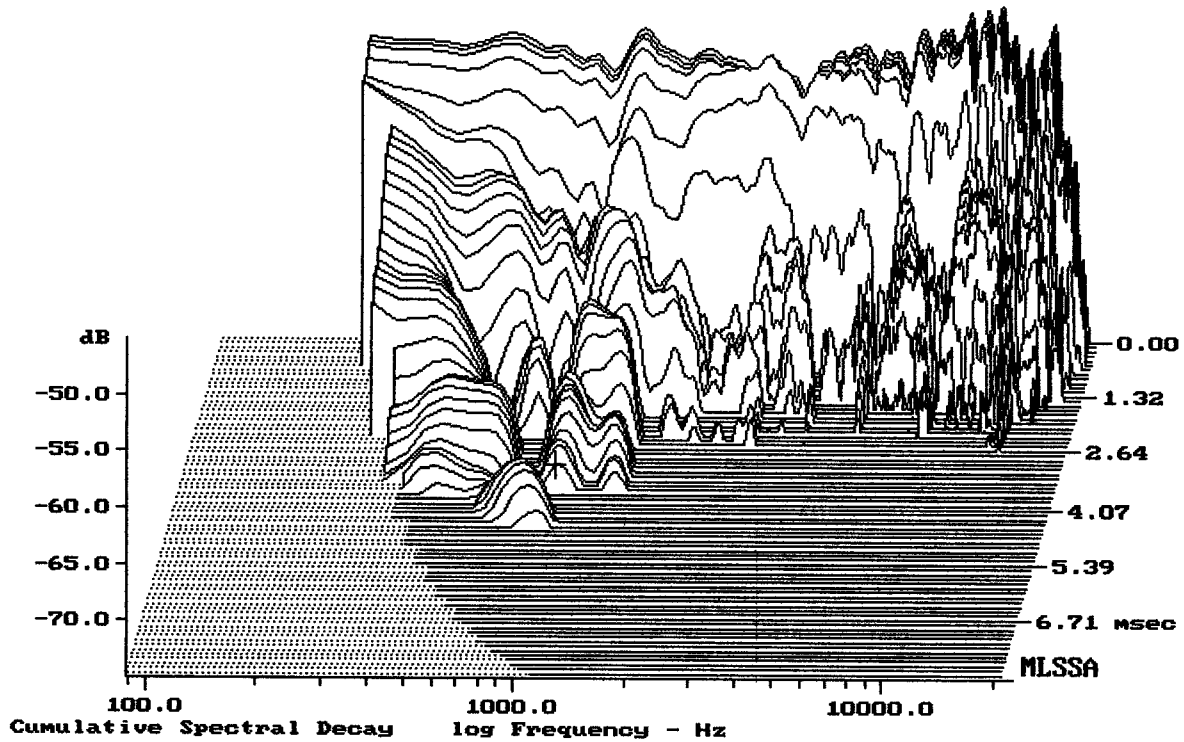
MLSSA: Frequency Domain



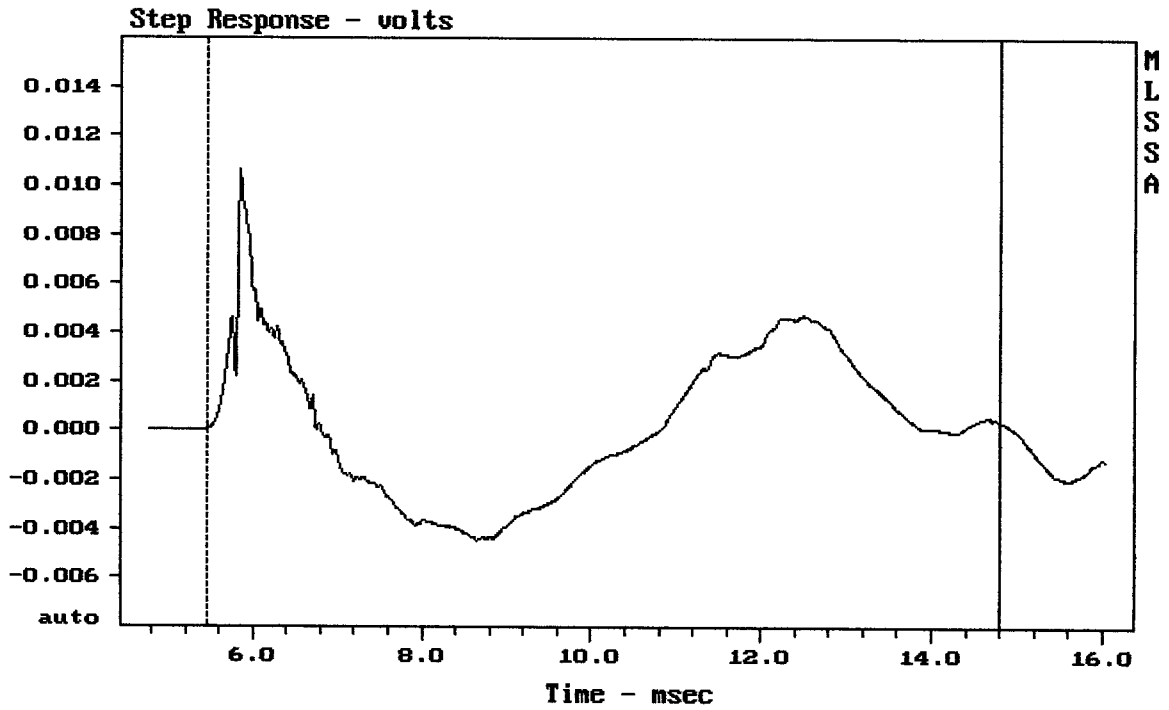
mean: 100.16, rms: 100.44, std: 2.02, max: 104.43, min: 89.66

RCF 4PRO 3001-A + DE250

MLSSA: Frequency Domain



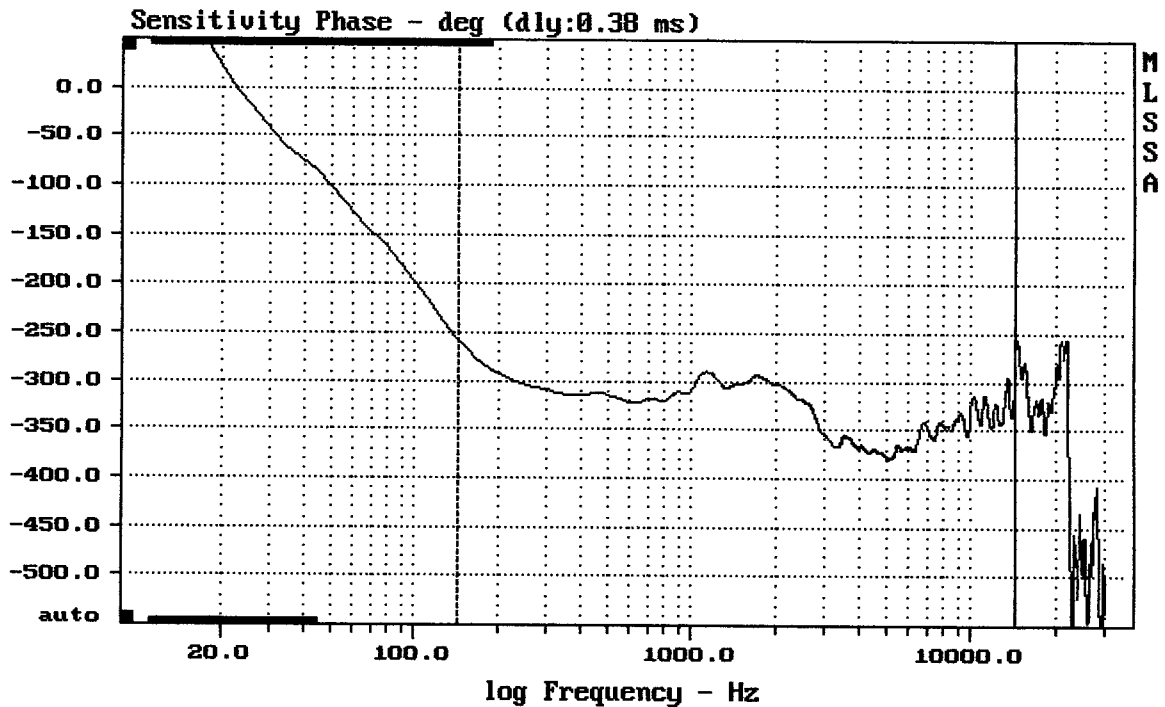
-72.82 dB, 932 Hz (21), 3.630 msec (34)



mean: 0.0003109, rms: 0.003018, std: 0.003002, max: 0.01059, min: -0.004462

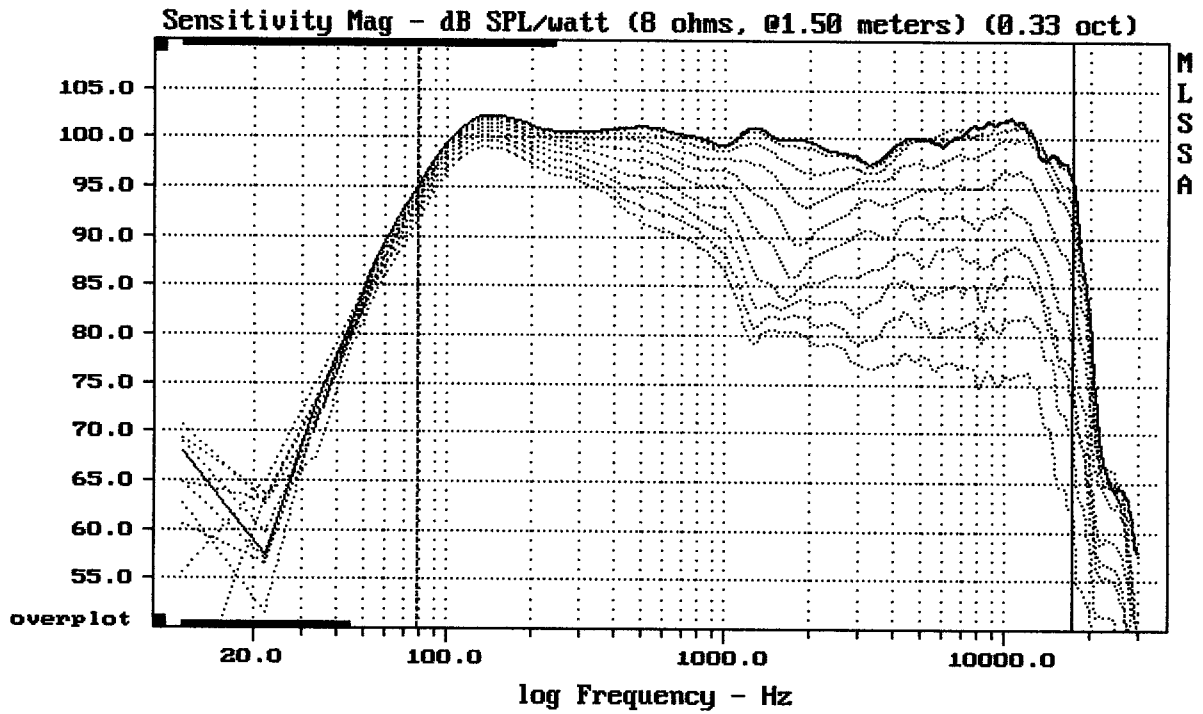
RCF 4PRO 3001-A + DE250

MLSSA: Time Domain



mean: -338.9, rms: 339.7, std: 23.16, max: -257.9, min: -379.9

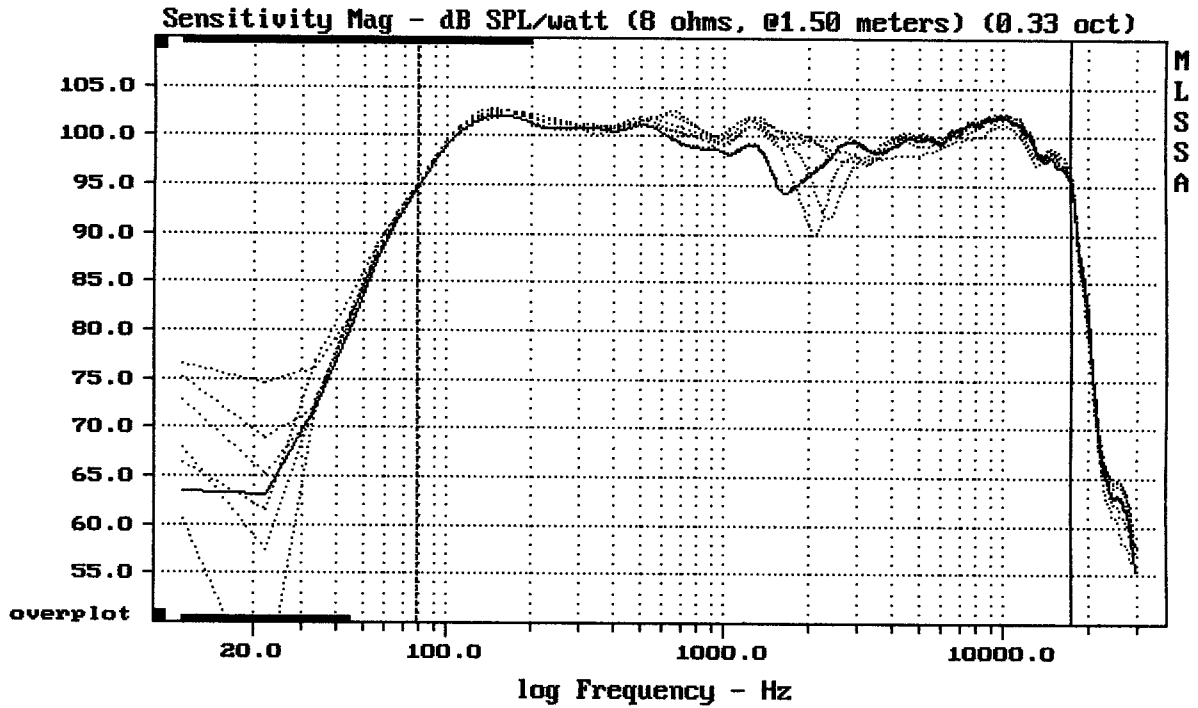
RCF 4PRO 3001-A + DE250



Overlay Compare: dev= +21/-9.9, std= 5.6, avg= -24

RCF 4PRO 3001-A + DE250

MLSSA: Frequency Domain



Overlay Compare: dev= +1.9/-5.3, std= 1, avg= -0.21

RCF 4PRO 3001-A + DE250