

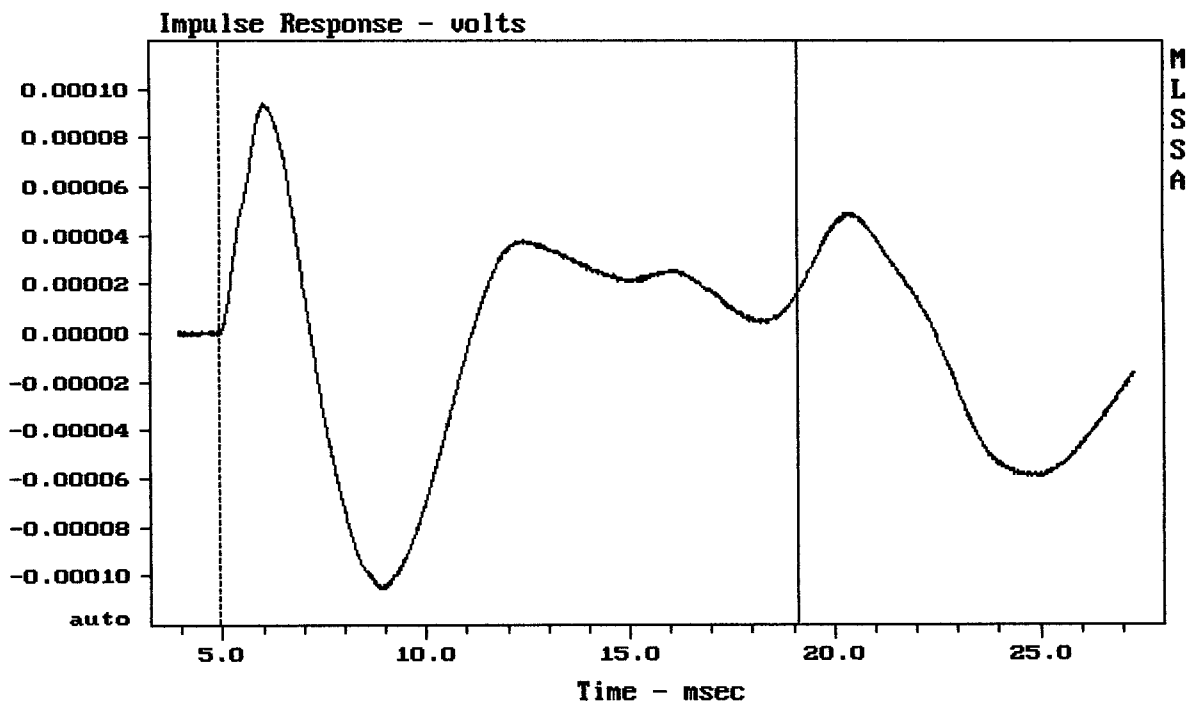

---

Level (33:244 Hz) = 96.30 dB SPL/watt (8 ohms, @1.50 meters)

---

TAPCO 6918s

MLSSA: Frequency Domain

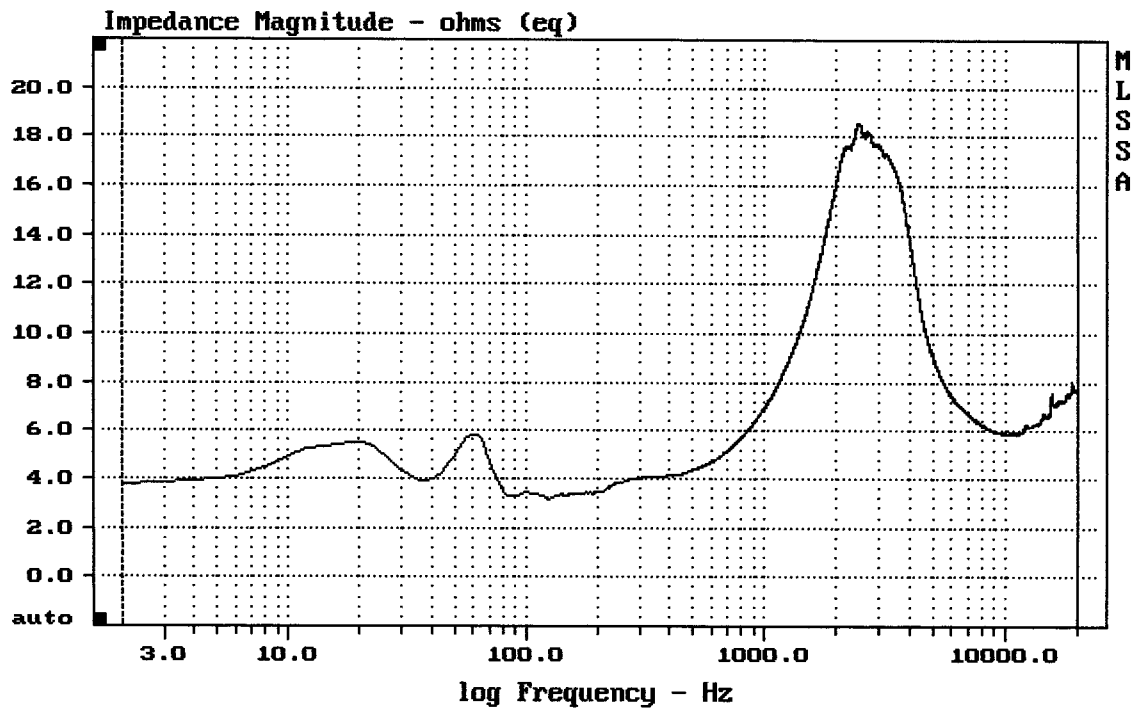



---

mean: 2.295e-006, rms: 4.873e-005, std: 4.867e-005, max: 9.393e-005, min: -0.0

---

TAPCO 6918s



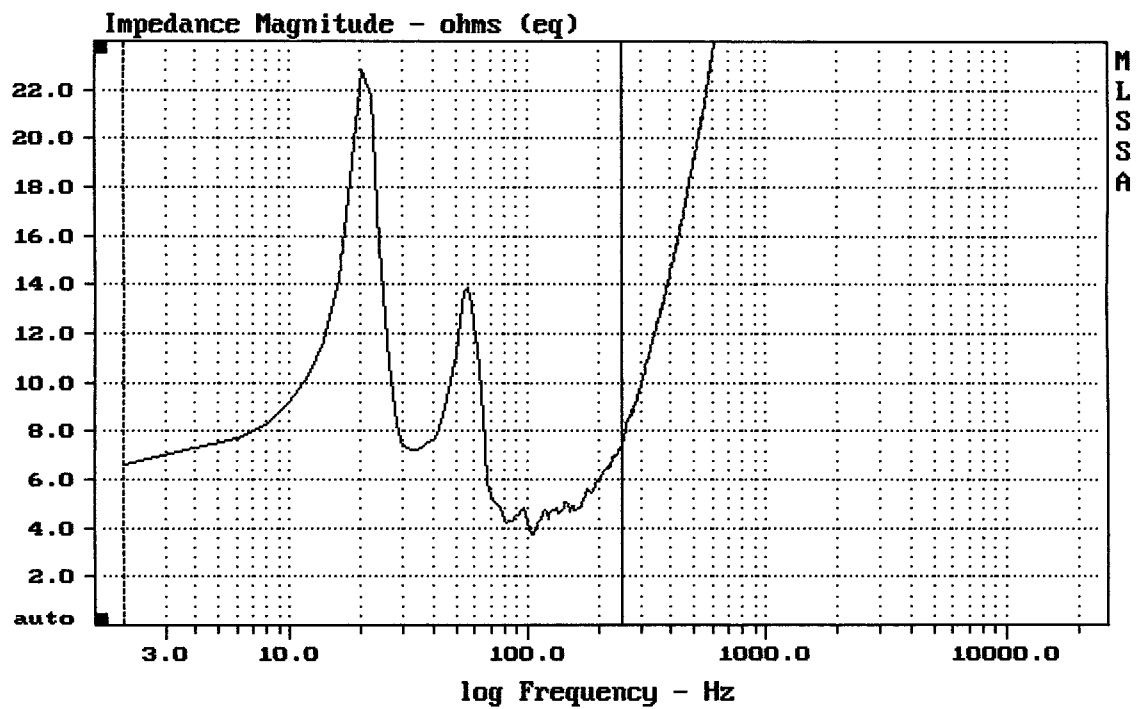

---

mean: 8.121, rms: 8.82, std: 3.441, max: 18.61, min: 3.174

---

TAPCO 6925 + 6918s

MLSSA: Frequency Domain

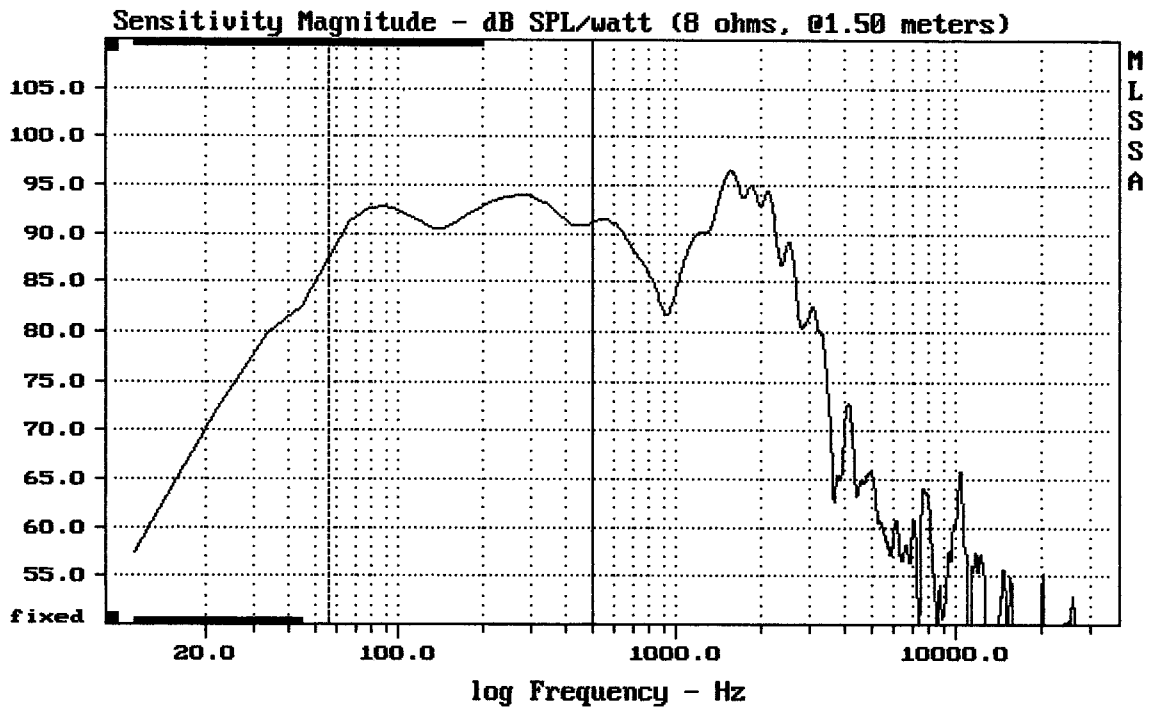



---

mean: 6.824, rms: 7.577, std: 3.294, max: 22.8, min: 3.732

---

TAPCO 6918s



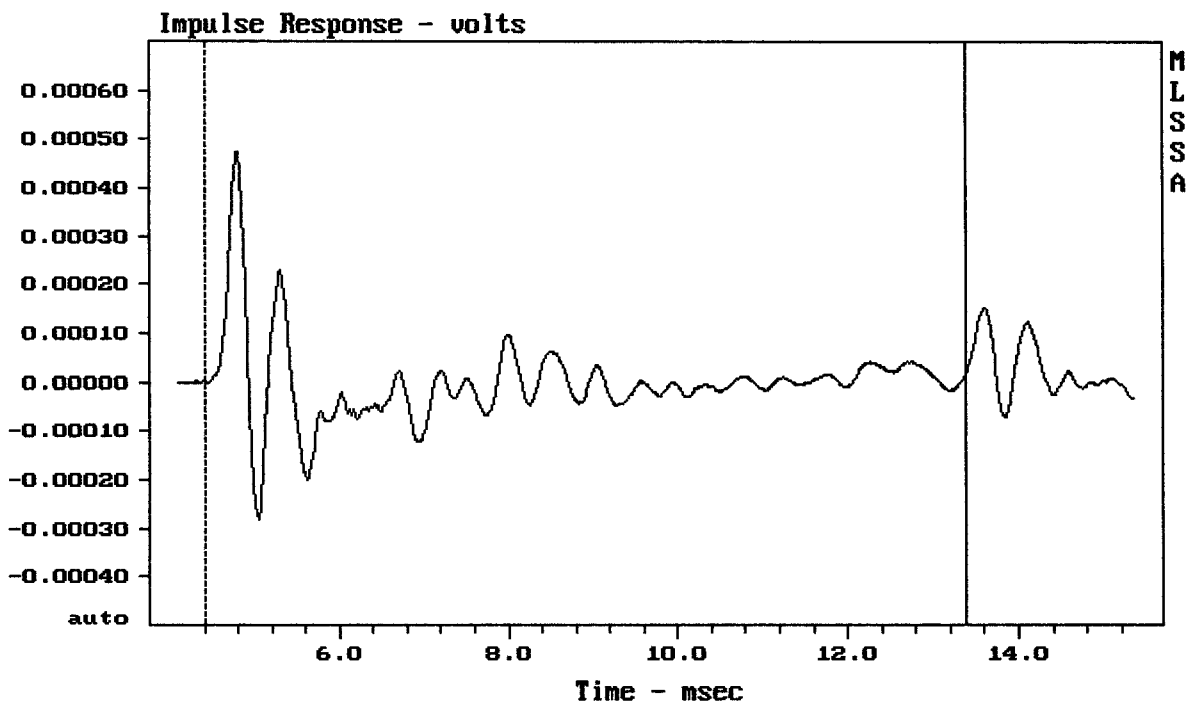

---

Level (55:499 Hz) = 92.07 dB SPL/watt (8 ohms, @1.50 meters)

---

18" FROM TAPCO 6918s

MLSSA: Frequency Domain




---

mean: -1.811e-006, rms: 8.463e-005, std: 8.462e-005, max: 0.0004746, min: -0.0

---

18" FROM TAPCO 6918s

Measured Data

QC Limits

Line	Parameter	Value	Units
1	RMSE-free	0.86	Ohms
2	Fs	37.33	Hz
3	Re	6.10	Ohms[dc]
4	Res	75.25	Ohms
5	Qms	7.33	
6	Qes	0.59	
7	Qts	0.55	
8	L1	1.83	mH
9	L2	2.86	mH
10	R2	14.78	Ohms
11	RMSE-load	1.00	Ohms
12	Vas(Sd)	155.95	liters
13	Mms	221.81	grams
14	Cms	82	$\mu$ M/Newton
15	B1	23.10	Tesla-M
16	SPLref(Sd)	93.2	dB[Re]
17	Rub-index	0.01	

Method: Mass-loaded (120.00 grams)

Area (Sd): 1164.16 sq cm

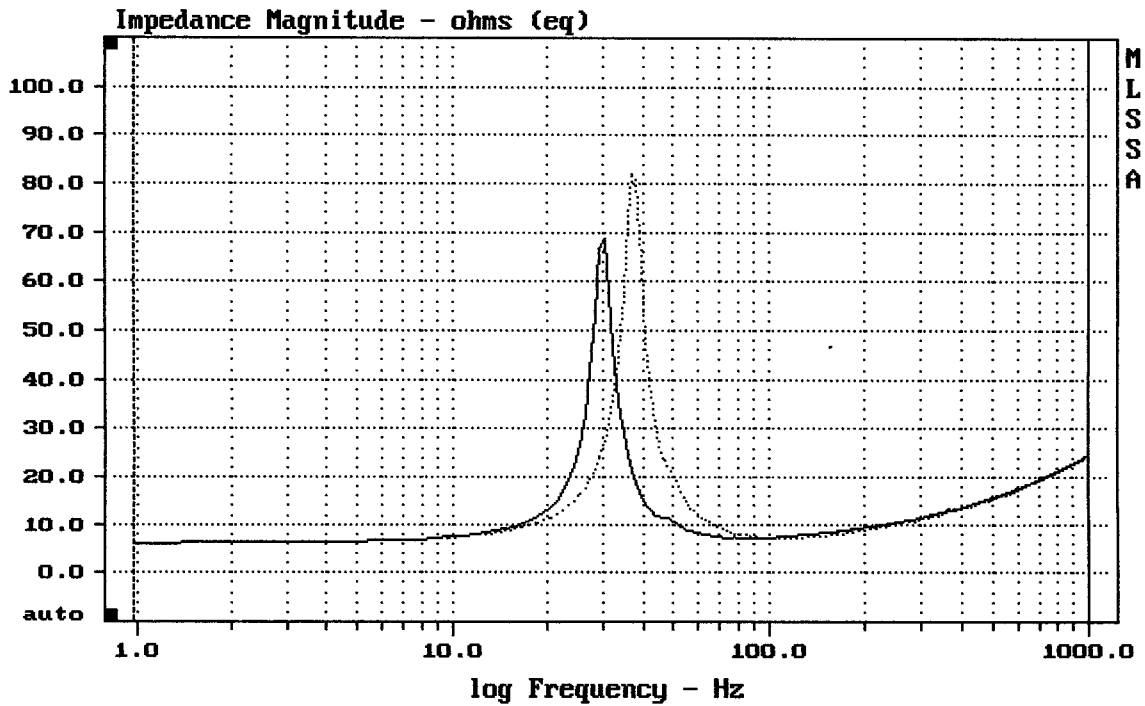
DCR mode: Measure (-0.06 ohms)

QC file: CLOSED

Analysis successful. Shift in Fs = -20.0% (-20% to -50% is recommended).

18" FROM TAPCO 6918s

MLSSA: Parameters



mean: 16.09, rms: 17.57, std: 7.055, max: 81.91, min: 6.123

MLSSA: Frequency Domain