

Measured Data

QC Limits

Line	Parameter	Value	Units
1	RMSE-free	0.79	Ohms
2	Fs	44.73	Hz
3	Re	4.80	Ohms[dc]
4	Res	99.52	Ohms
5	Qms	8.25	
6	Qes	0.40	
7	Qts	0.38	
8	L1	1.24	mH
9	L2	2.33	mH
10	R2	7.65	Ohms
11	RMSE-load	0.68	Ohms
12	Vas(Sd)	186.72	liters
13	Mms	148.80	grams
14	Cms	85	$\mu\text{M}/\text{Newton}$
15	Bl	22.46	Tesla-M
16	SPLref(Sd)	98.1	dB[Re]
17	Rub-index	0.01	

Method: Mass-loaded (120.00 grams)

Area (Sd): 1250.00 sq cm

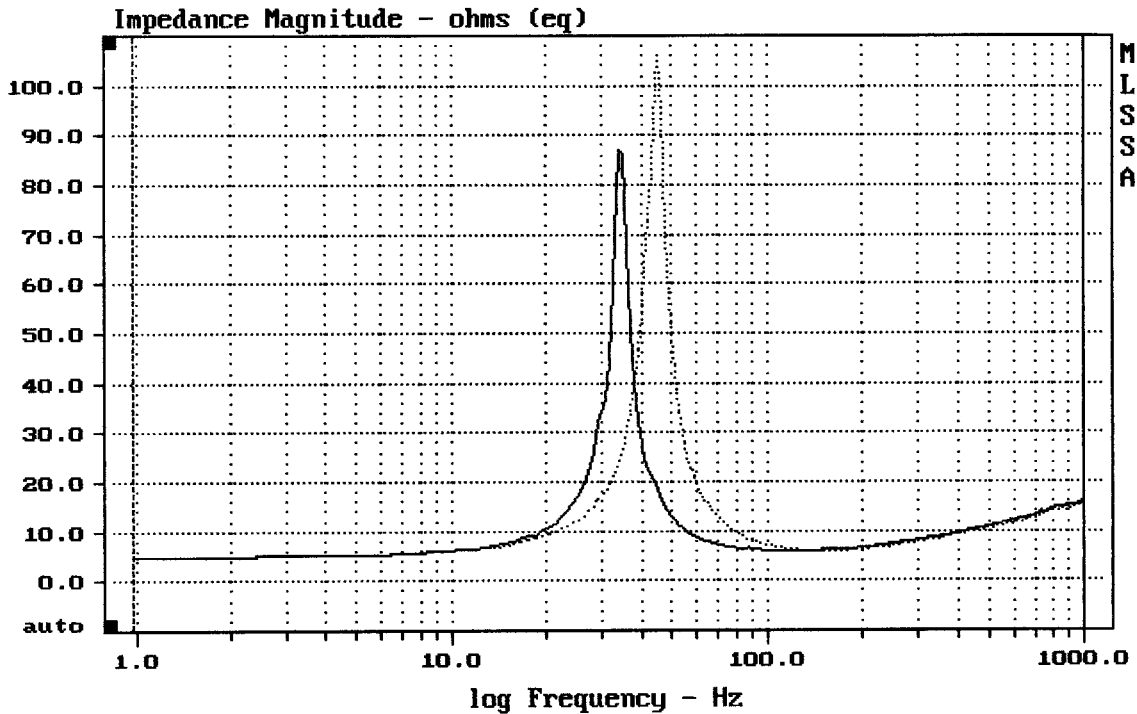
DCR mode: Measure (-0.06 ohms)

QC file: CLOSED

Analysis successful. Shift in Fs = -23.0% (-20% to -50% is recommended).

RCF PRECISION LF18H400

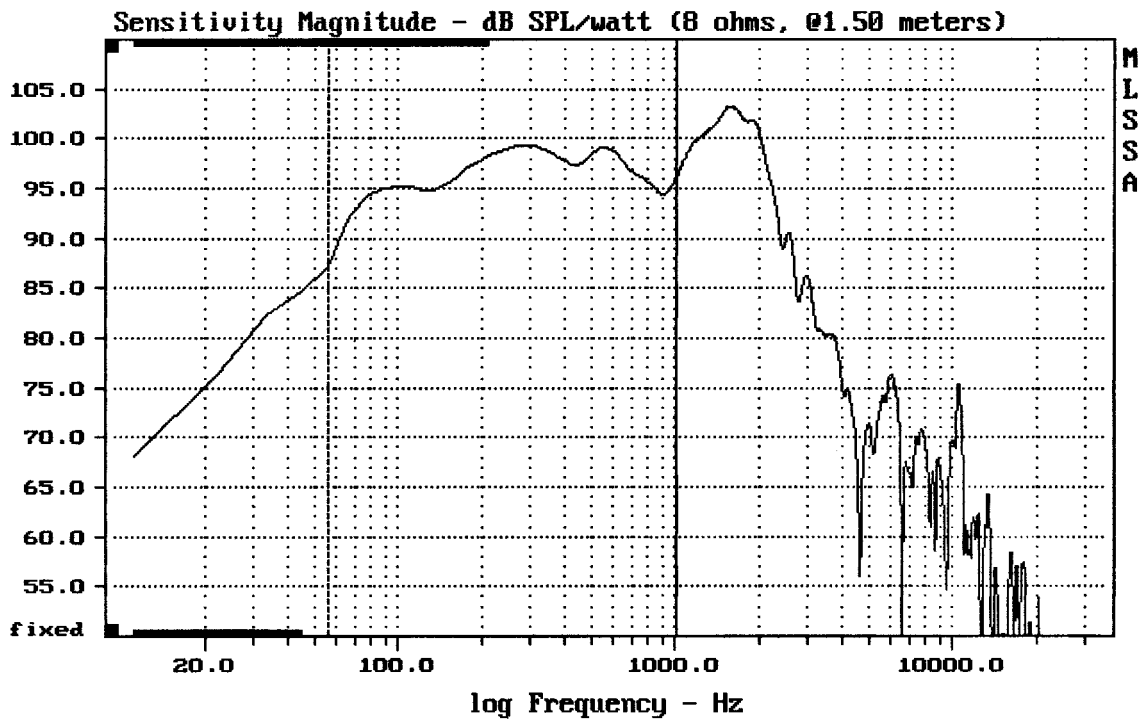
MLSSA: Parameters



CURSOR: dy = -0.384035 x = 1000.9766 (1025)

DTTO

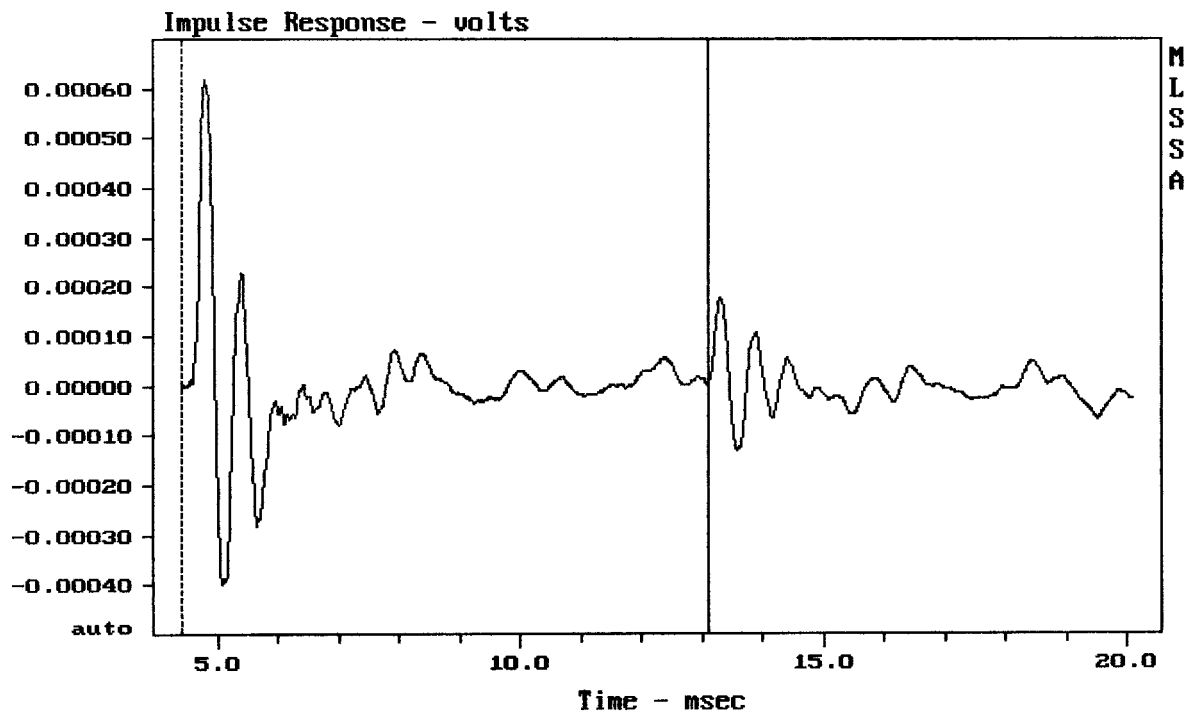
MLSSA: Frequency Domain



Level (55:1010 Hz) = 96.75 dB SPL/watt (8 ohms, @1.50 meters)

RCF PRECISION LF18H400

MLSSA: Frequency Domain



mean: $-1.354e-007$, rms: 0.0001147, std: 0.0001147, max: 0.0006174, min: -0.000

RCF PRECISION LF18H400