

Measured Data

QC Limits

Line	Parameter	Value	Units
1	RMSE-free	1.67	Ohms
2	Fs	65.57	Hz
3	Re	5.40	Ohms[dc]
4	Res	44.50	Ohms
5	Qms	3.39	
6	Qes	0.41	
7	Qts	0.37	
8	L1	0.32	mH
9	L2	0.48	mH
10	R2	10.89	Ohms
11	RMSE-load	1.60	Ohms
12	Vas(Sd)	25.14	liters
13	Mms	39.48	grams
14	Cms	149	$\mu$ M/Newton
15	Bl	14.62	Tesla-M
16	SPLref(Sd)	94.2	dB[Re]
17	Rub-index	0.03	

Method: Mass-loaded (40.00 grams)

Area (Sd): 346.36 sq cm

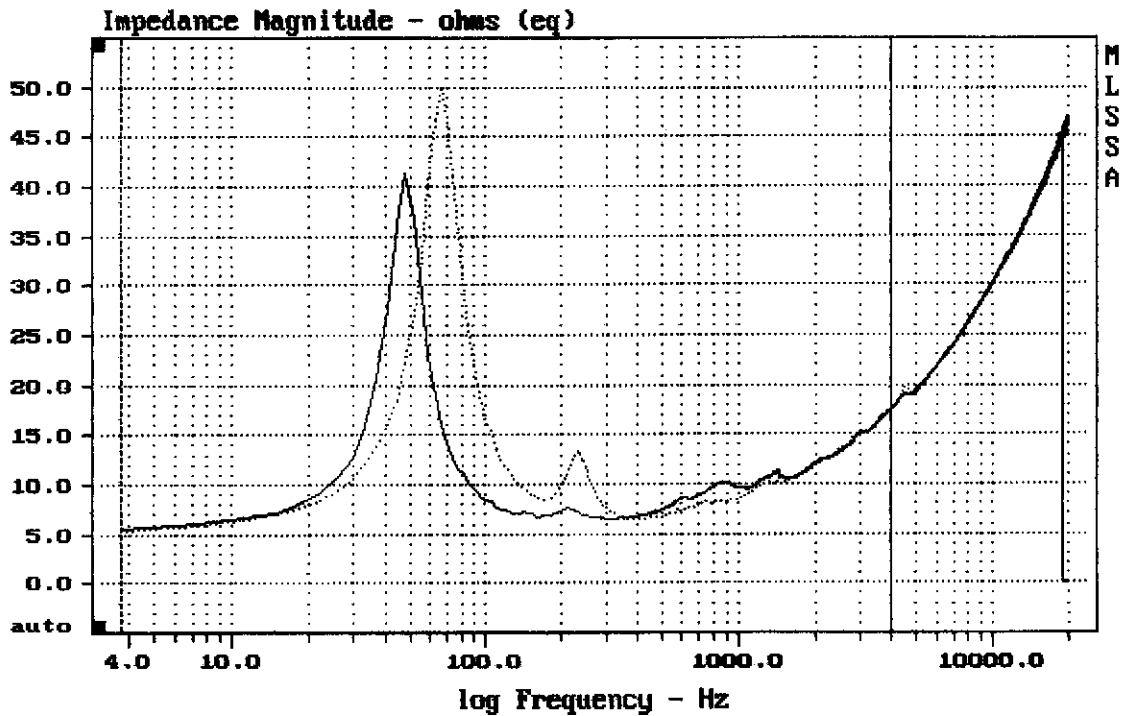
DCR mode: Measure (-0.09 ohms)

QC file: CLOSED

Analysis successful. Shift in Fs = -28.1% (-20% to -50% is recommended).

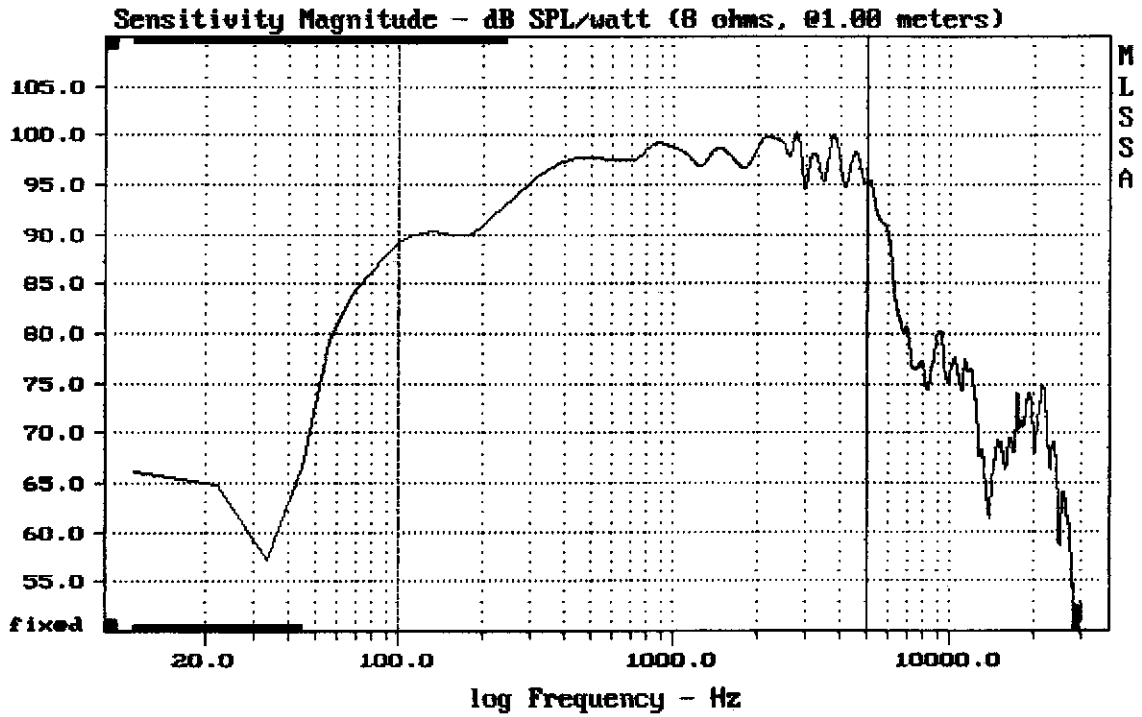
10NDL64

MLSSA: Parameters



mean: 12.39, rms: 13.06, std: 4.141, max: 49.85, min: 5.418

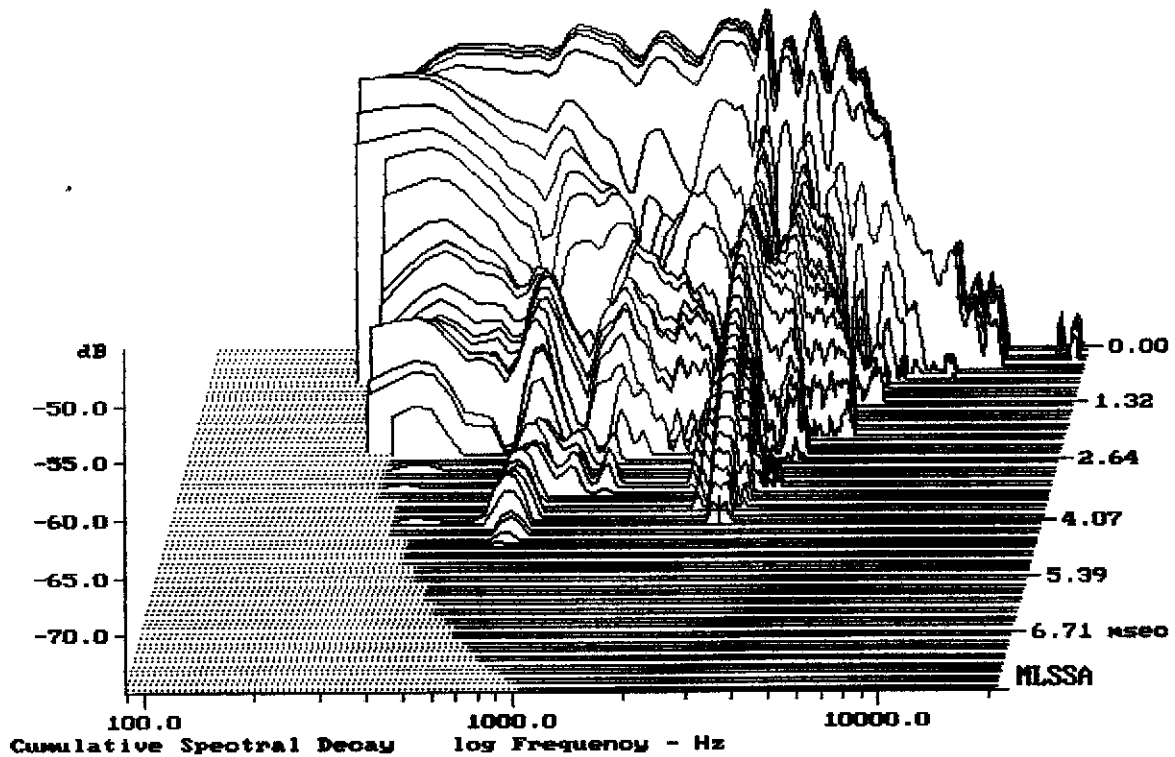
MLSSA: Frequency Domain



Level (100:5005 Hz) = 96.82 dB SPL/watt (8 ohms, @1.00 meters)

10NDL64

MLSSA: Frequency Domain



-74.15 dB, 2752 Hz (62), 4.070 msec (38)