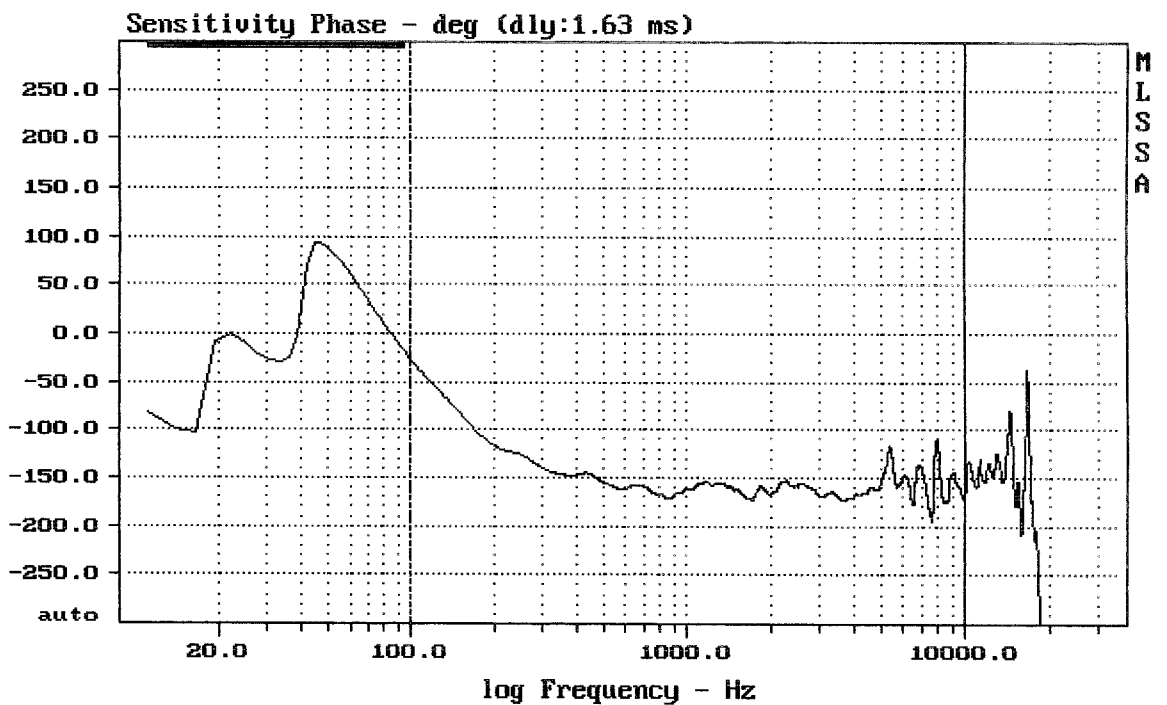


Level (100:18796 Hz) = 97.58 dB SPL/watt (8 ohms, @2.80 meters)

EAW UFR129i Greybox rev. A

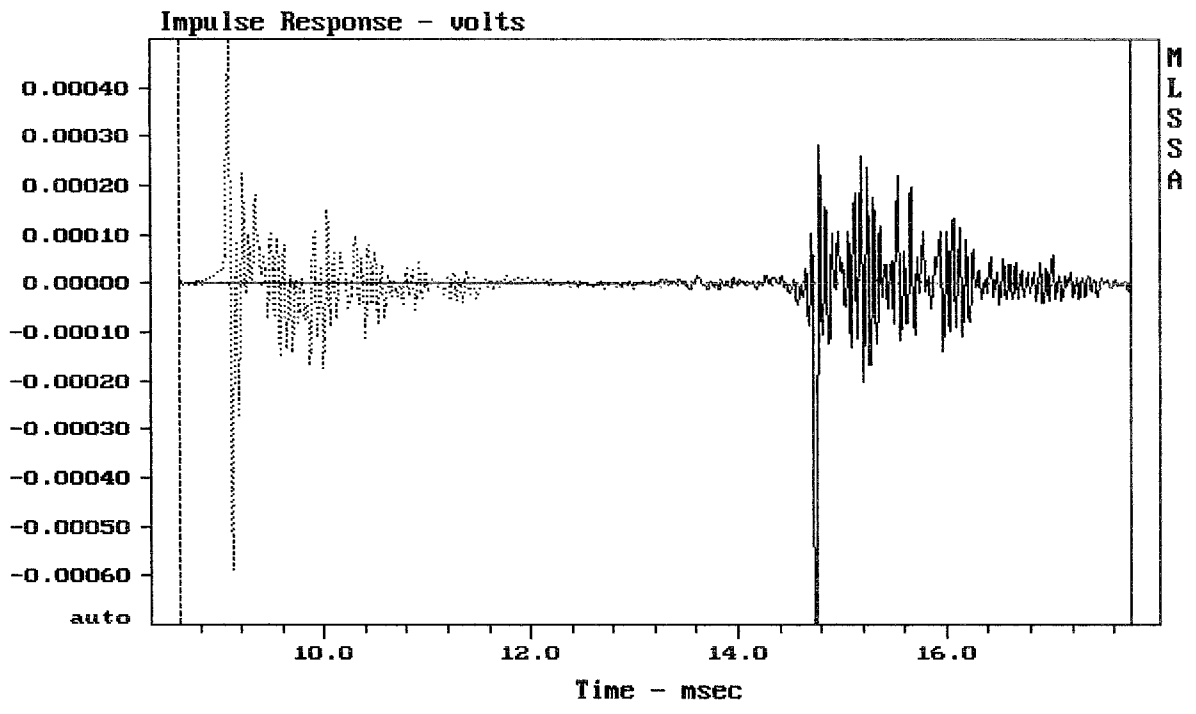
MLSSA: Frequency Domain



mean: -156.9, rms: 157.8, std: 16.83, max: -27.07, min: -194.8

EAW UFR129i Greybox rev. A

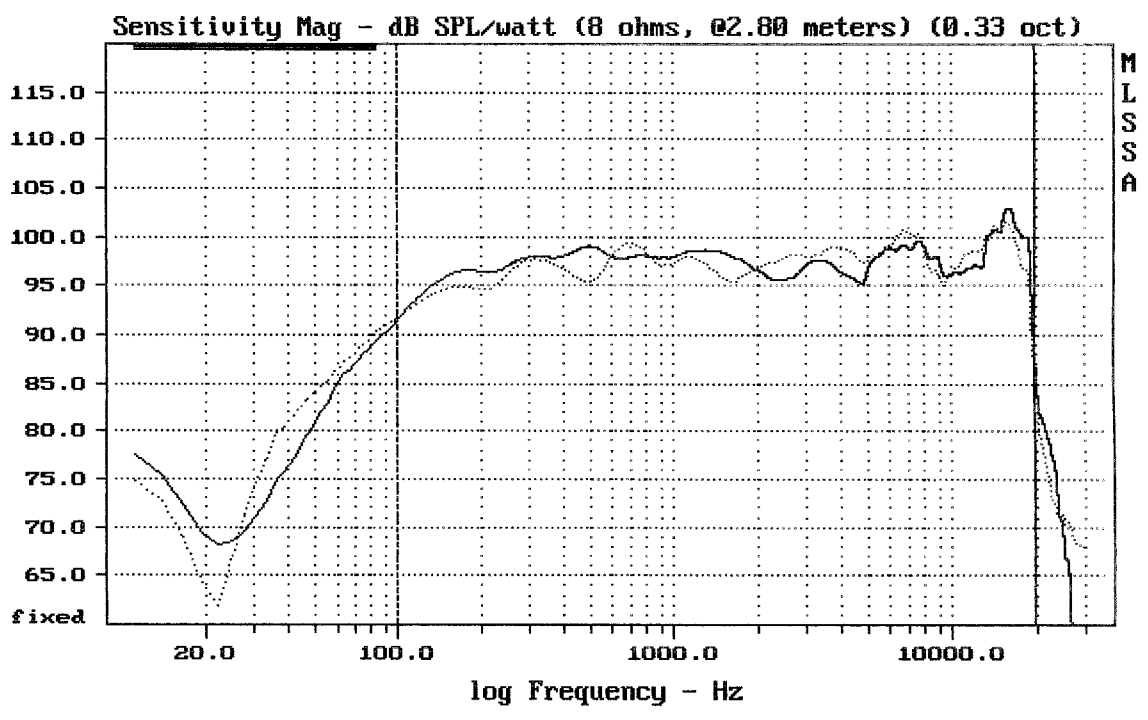
MLSSA: Frequency Domain



CURSOR: $dy = -1.30435e-005$ $x = 17.7650$ (1615)

EAW VFR129i Greybox ----- / bez Greybox

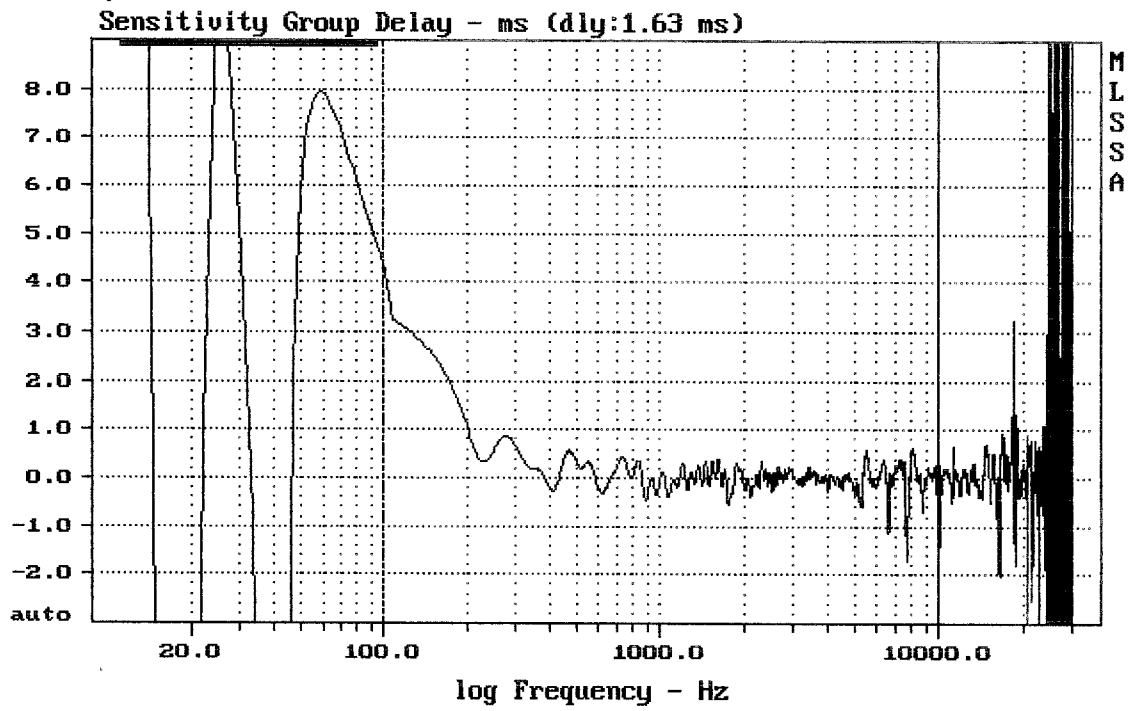
MLSSA: Time Domain



Overlay Compare: dev= +3.7/-2.7, std= 1.7, avg= 0.13

EAW VFR129i Greybox --- / bez Greybox ...

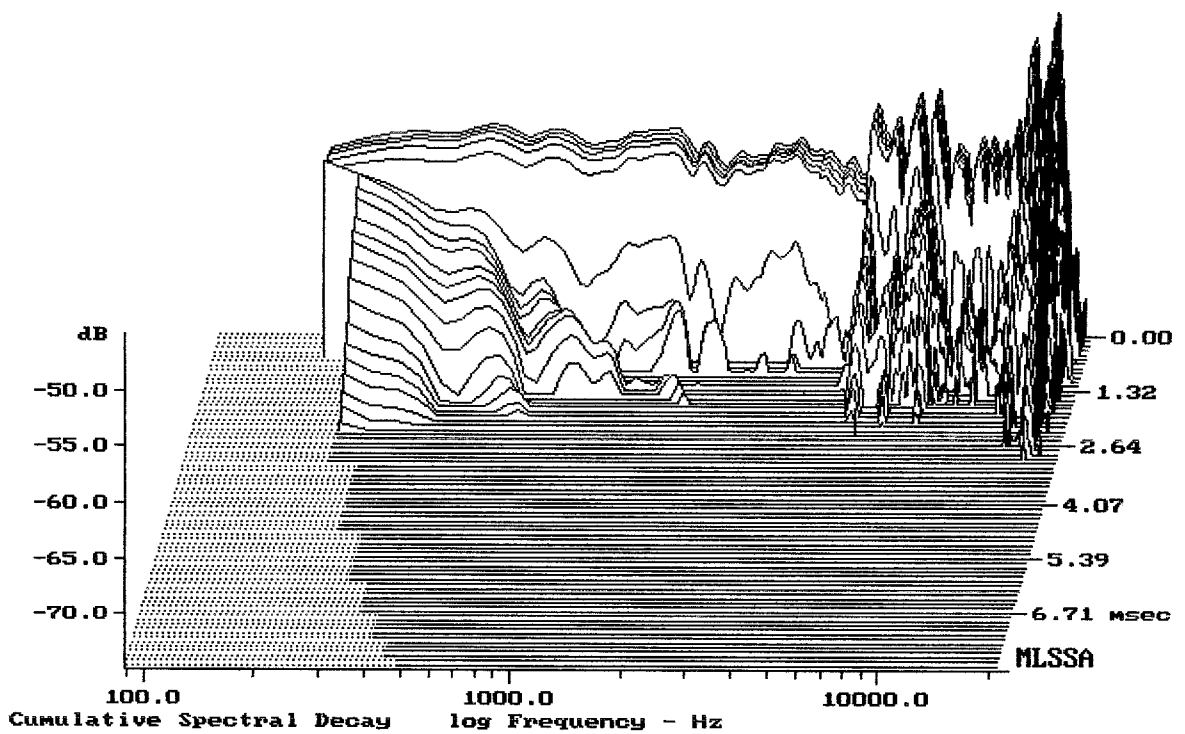
MLSSA: Frequency Domain



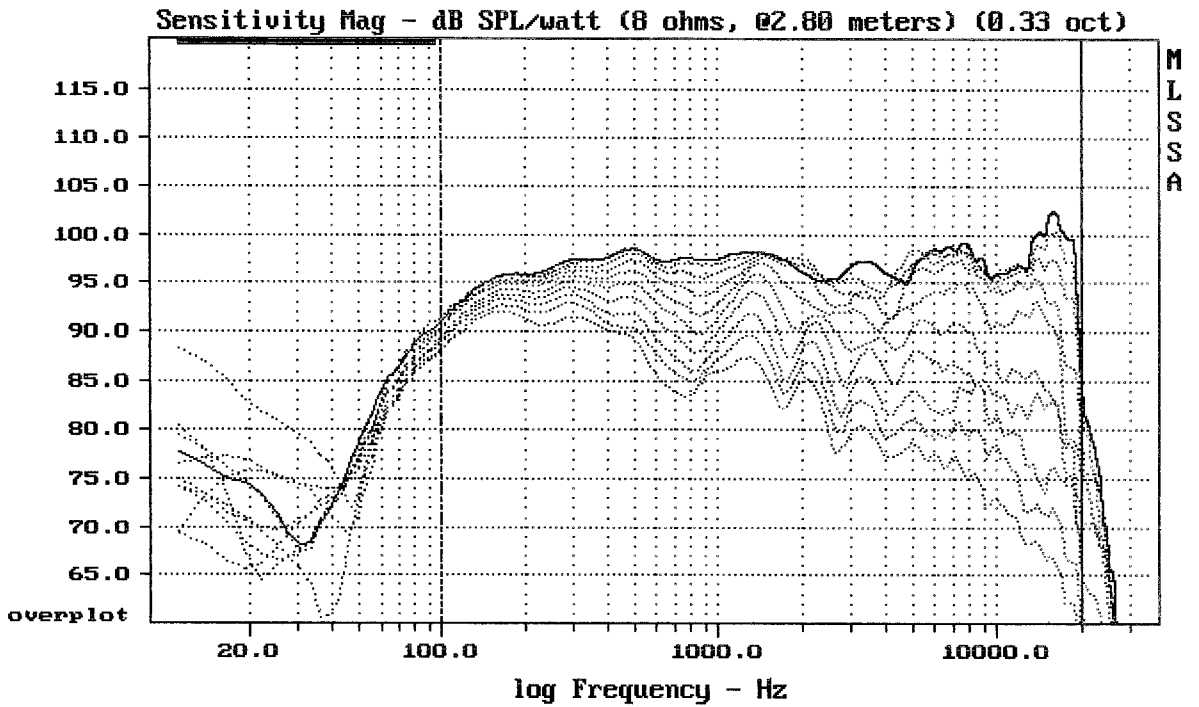
CURSOR: y = -0.294009 x = 9937.6329 (3582)

EAW VFR129i Greybox rev. A

MLSSA: Frequency Domain



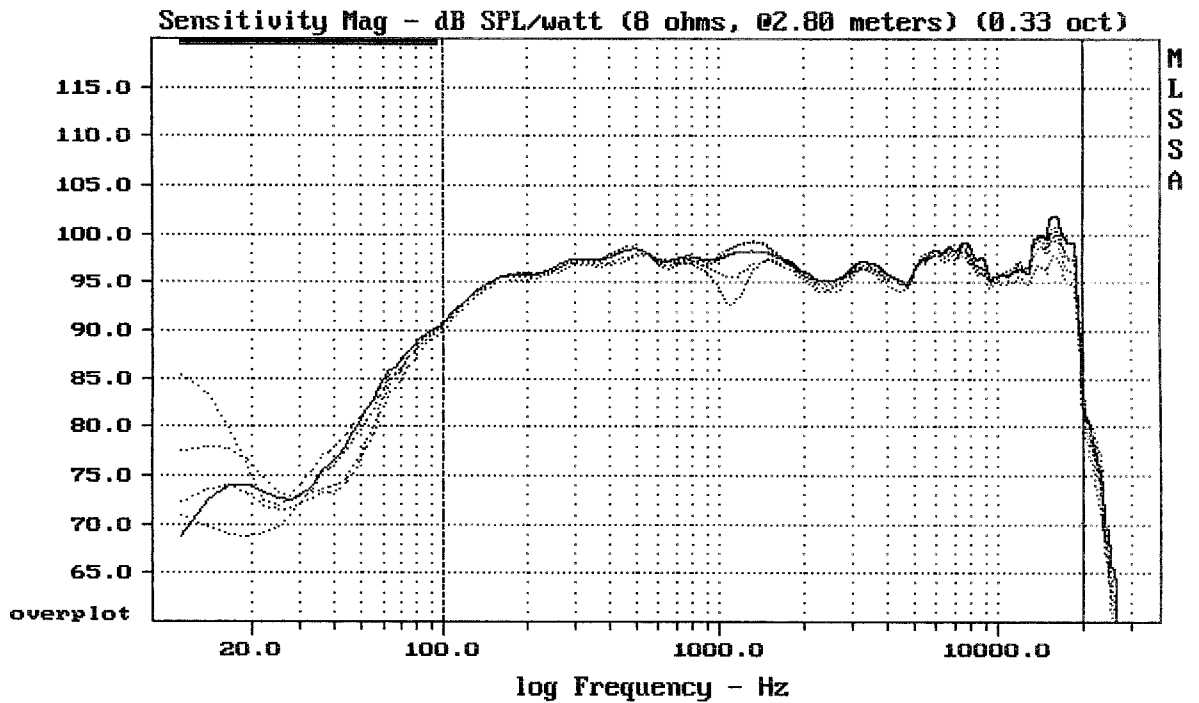
-75.00 dB, 5593 Hz (126), 2.090 msec (20)



Overlay Compare: dev= +22/-13, std= 8.2, avg= -25

EAW VFR129i Greybox rev. A

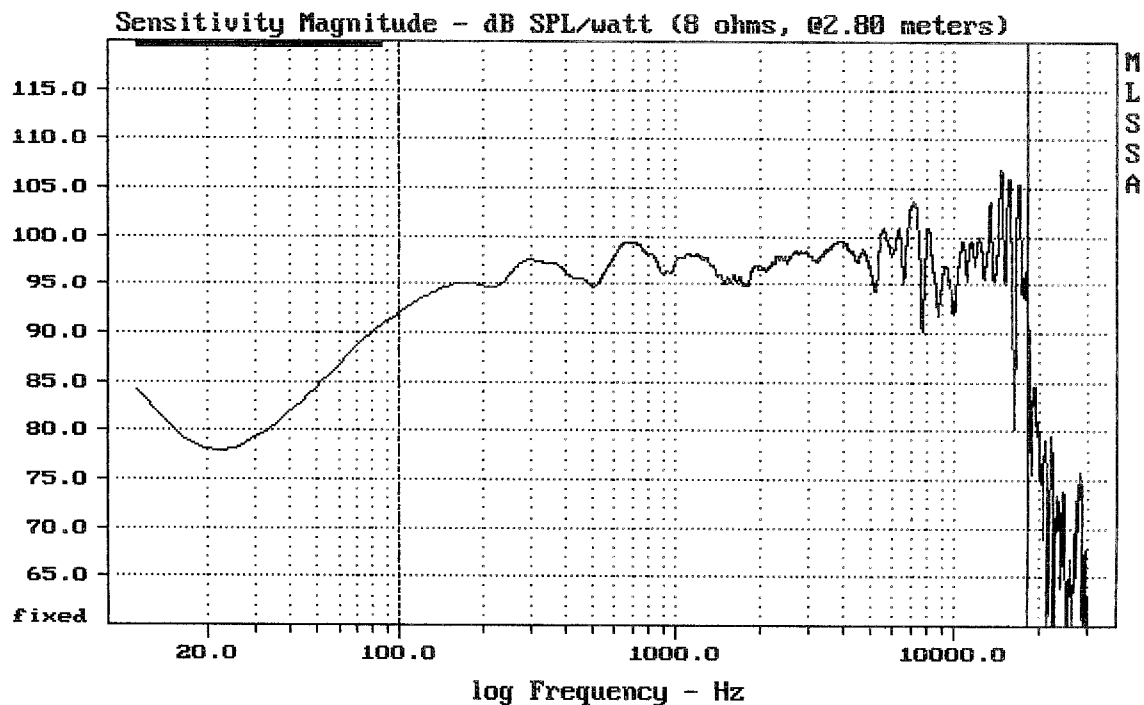
MLSSA: Frequency Domain



Overlay Compare: dev= +2/-3.6, std= 1.4, avg= -1.9

EAW VFR129i Greybox rev. A

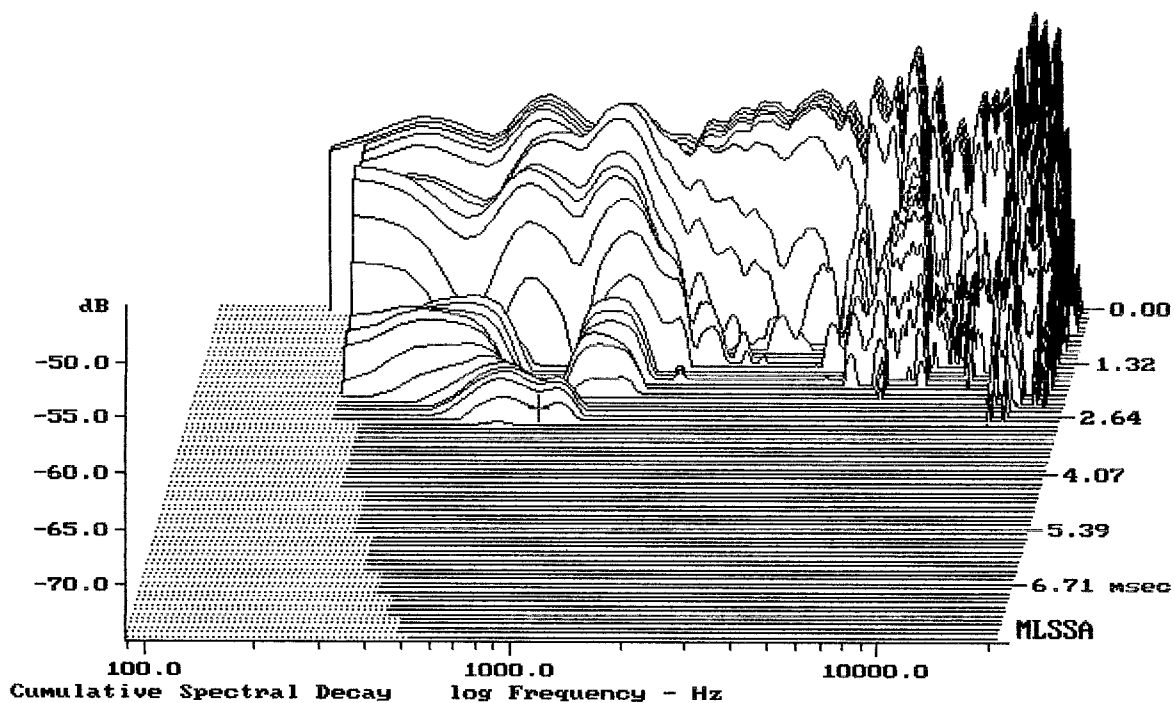
MLSSA: Frequency Domain



Level (100:18200 Hz) = 97.70 dB SPL/watt (8 ohms, @2.80 meters)

EAW UFR129i

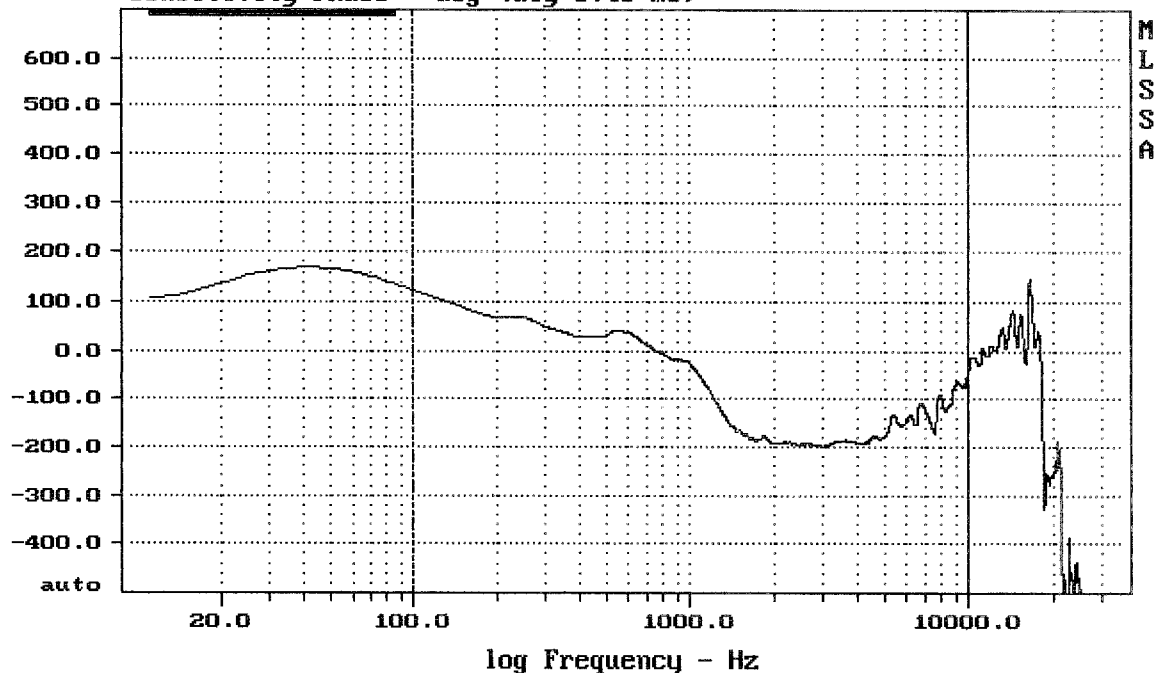
MLSSA: Frequency Domain



-74.00 dB, 799 Hz (18), 2.750 msec (26)

EAW UFR129i

Sensitivity Phase - deg (dly:0.46 ms)

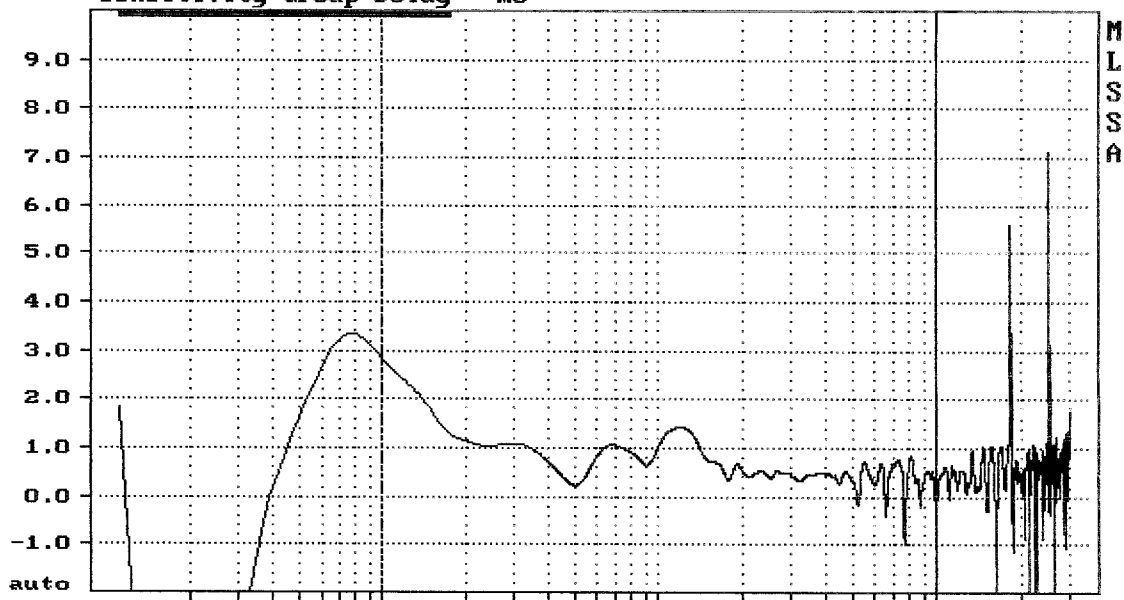


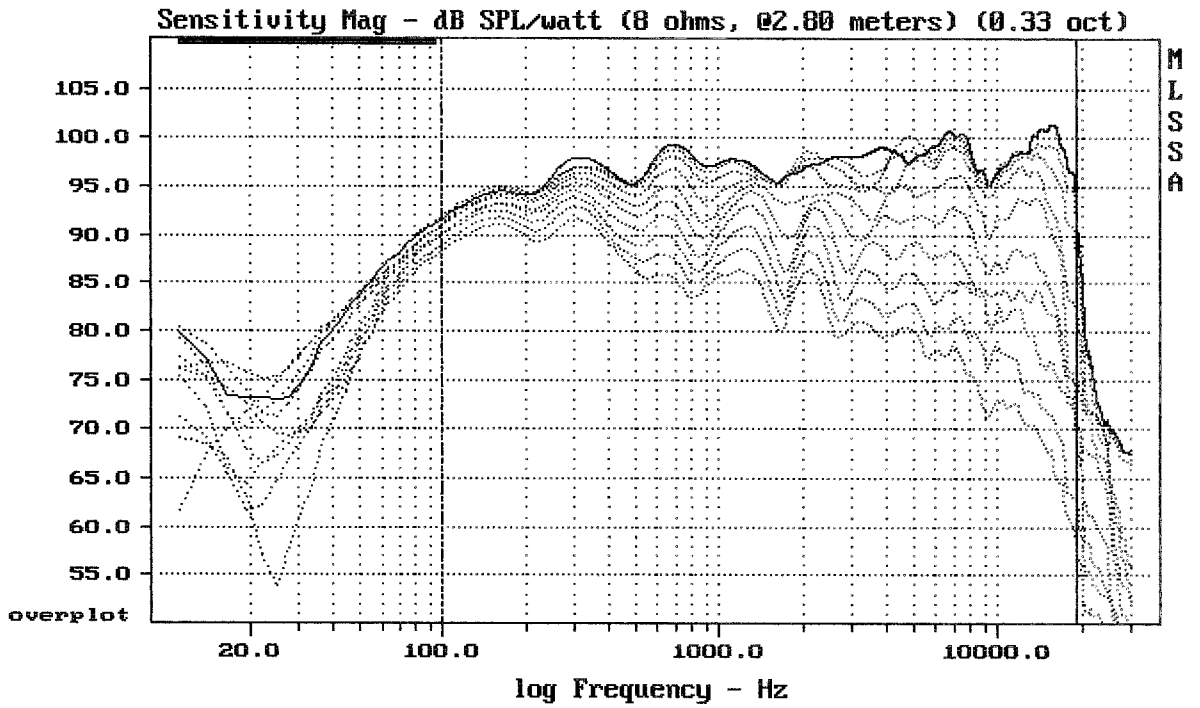
mean: -129.6, rms: 145.6, std: 66.47, max: 122.7, min: -199.7

EAW VFR129i

MLSSA: Frequency Domain

Sensitivity Group Delay - ms

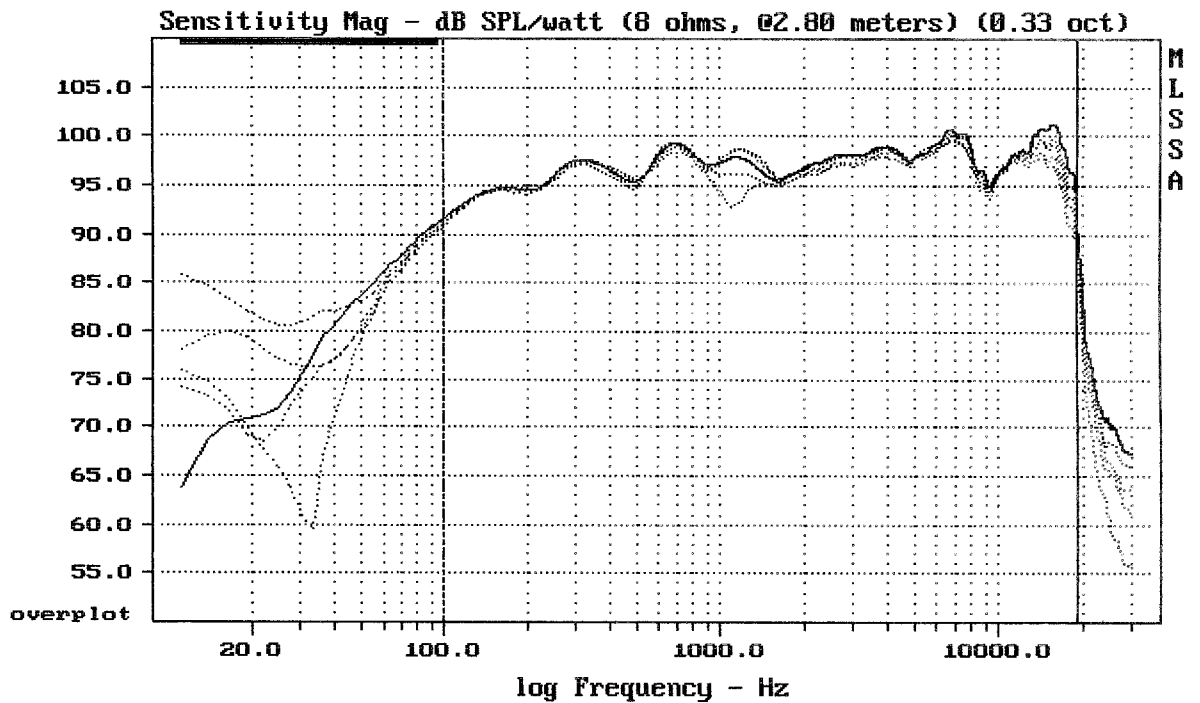




Overlay Compare: dev= +22/-12, std= 7.8, avg= -25

EAW UFR129i

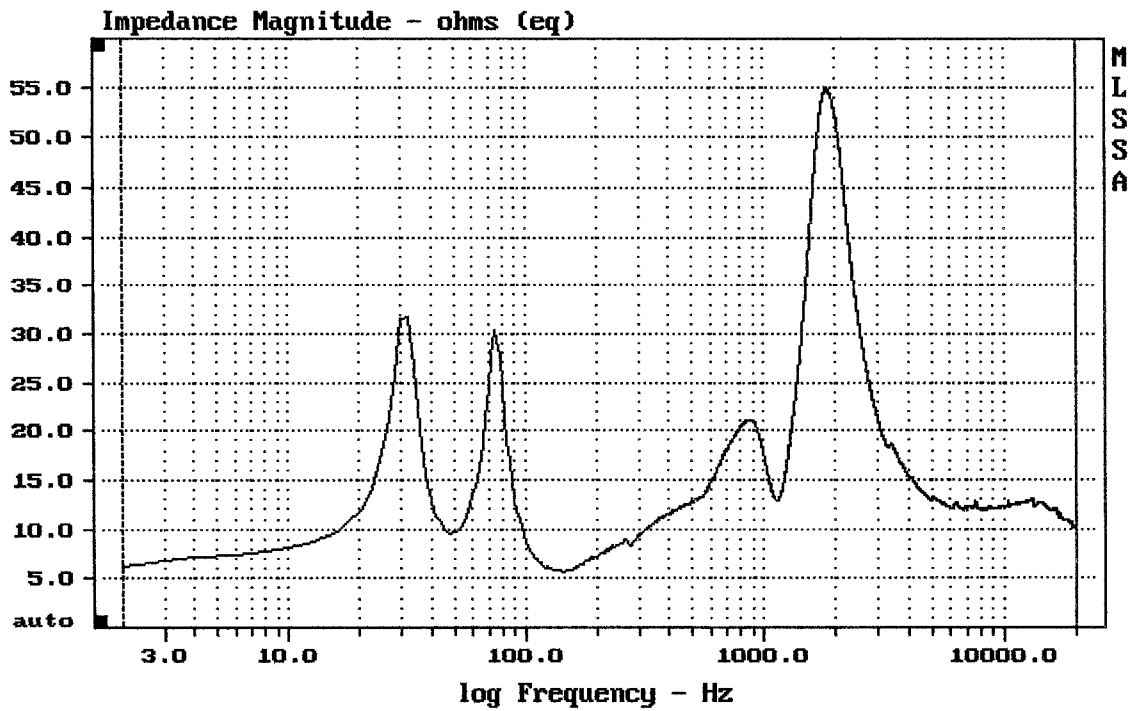
MLSSA: Frequency Domain



Overlay Compare: dev= +1.9/-3.5, std= 1.3, avg= -1.5

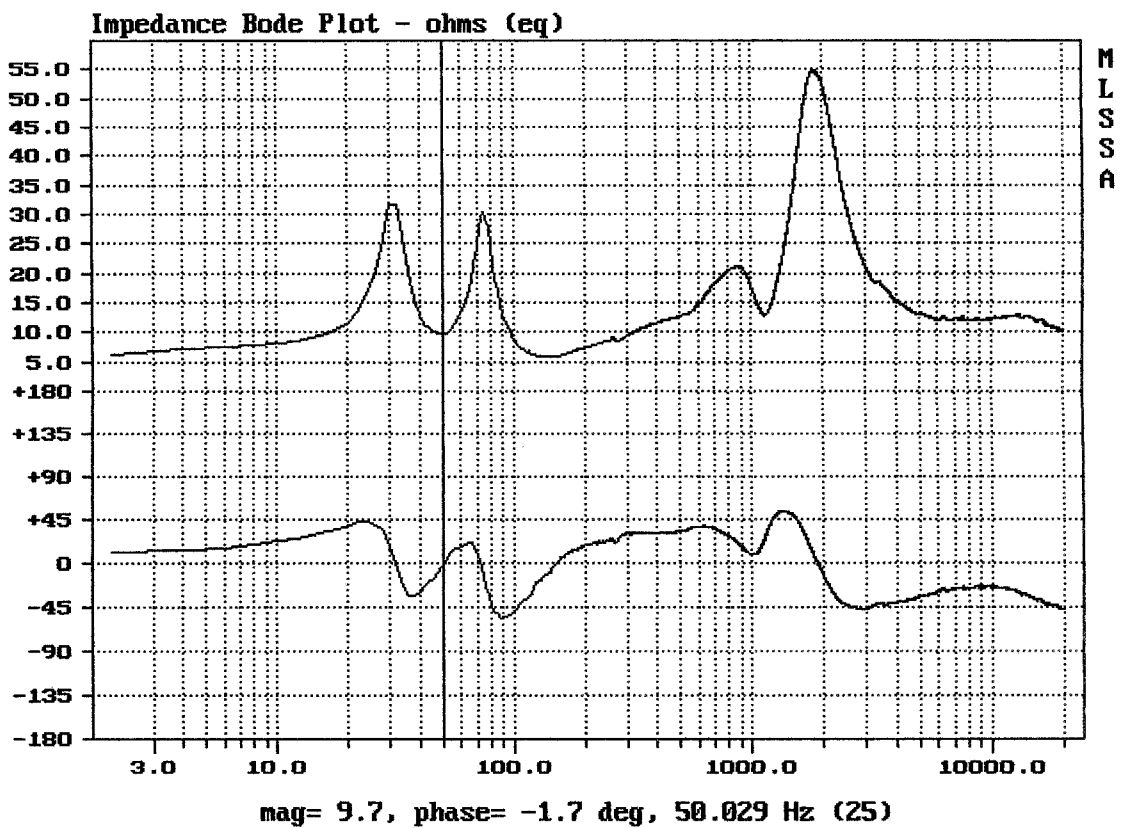
EAW UFR129i

MLSSA: Frequency Domain

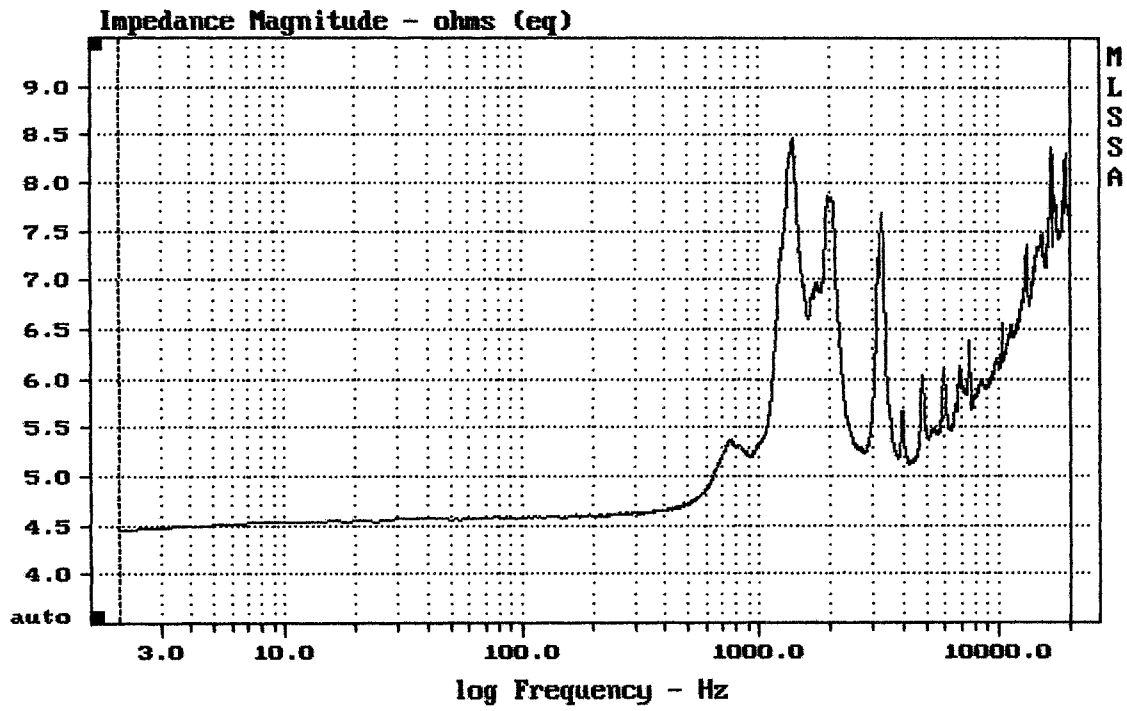


EAW UFR129i

MLSSA: Frequency Domain



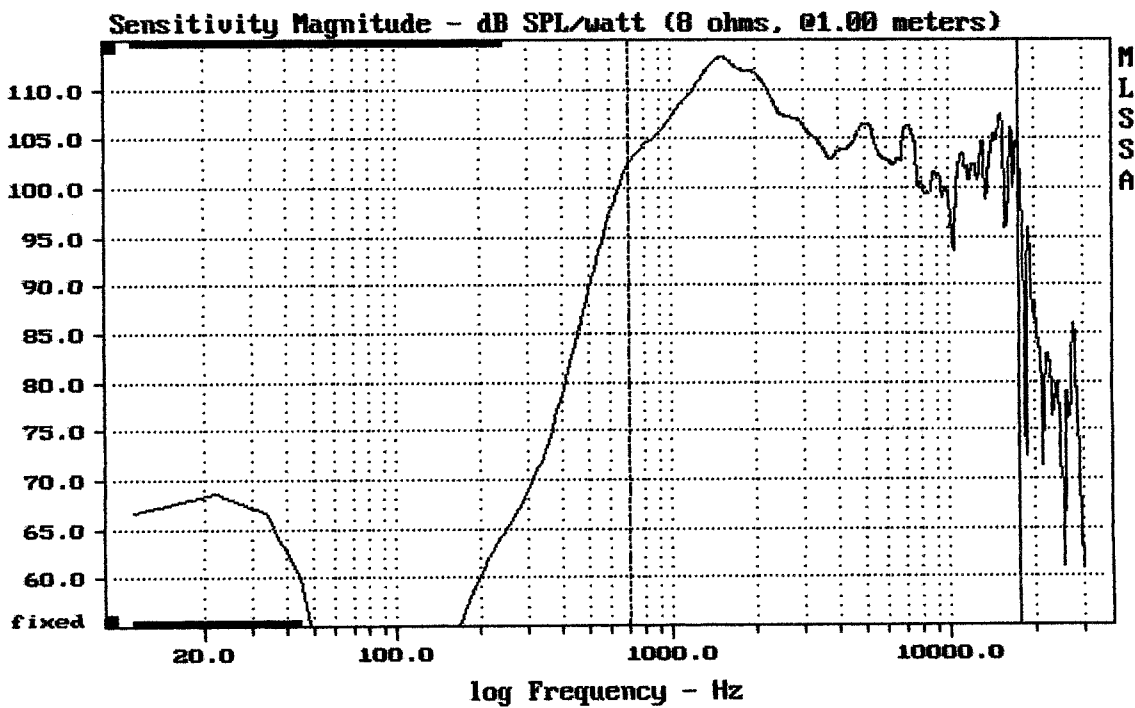
EAW UFR129i



mean: 6.492, rms: 6.556, std: 0.9206, max: 8.464, min: 4.449

DRIVER + HORN URF129i

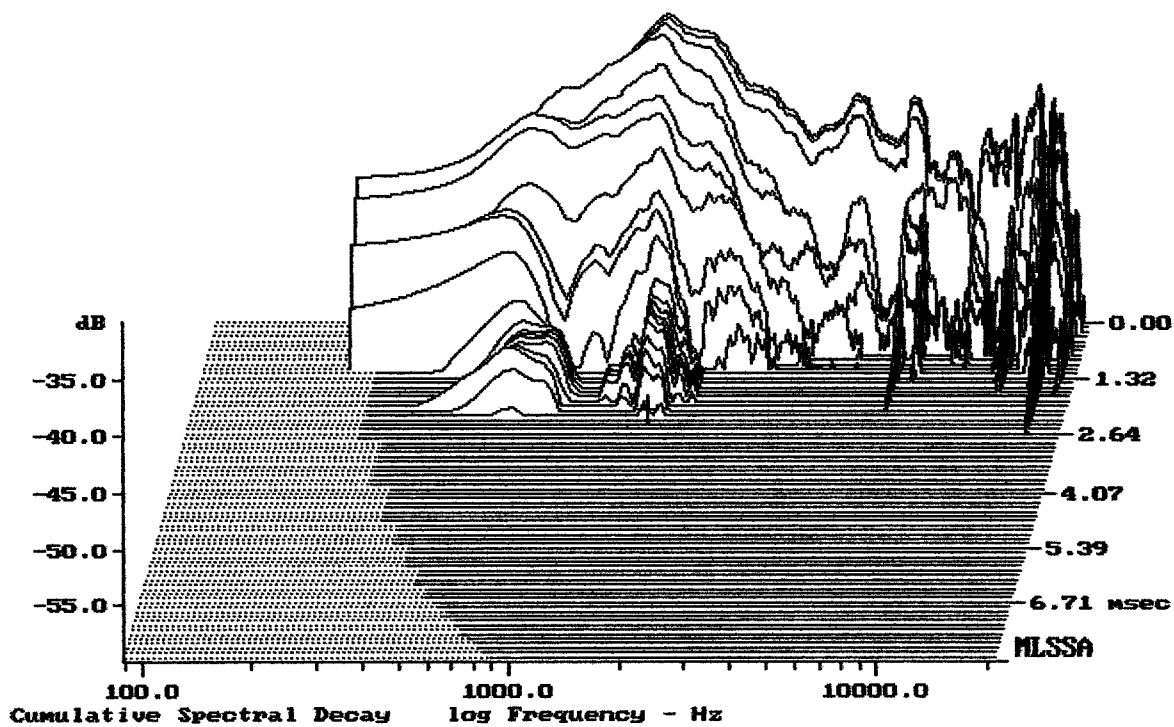
MLSSA: Frequency Domain



Level (699:17000 Hz) = 107.50 dB SPL/watt (8 ohms, @1.00 meters)

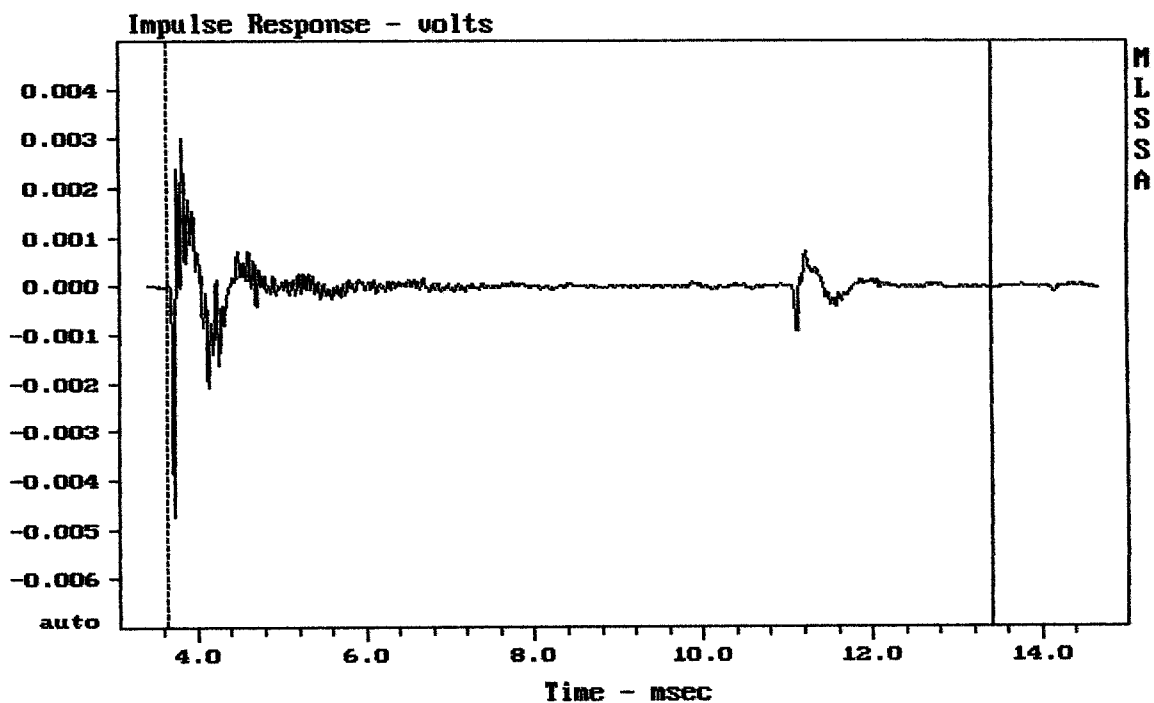
DRIVER + HORN URF129i

MLSSA: Frequency Domain



-59.45 dB, 1554 Hz (35), 2.200 msec (21)

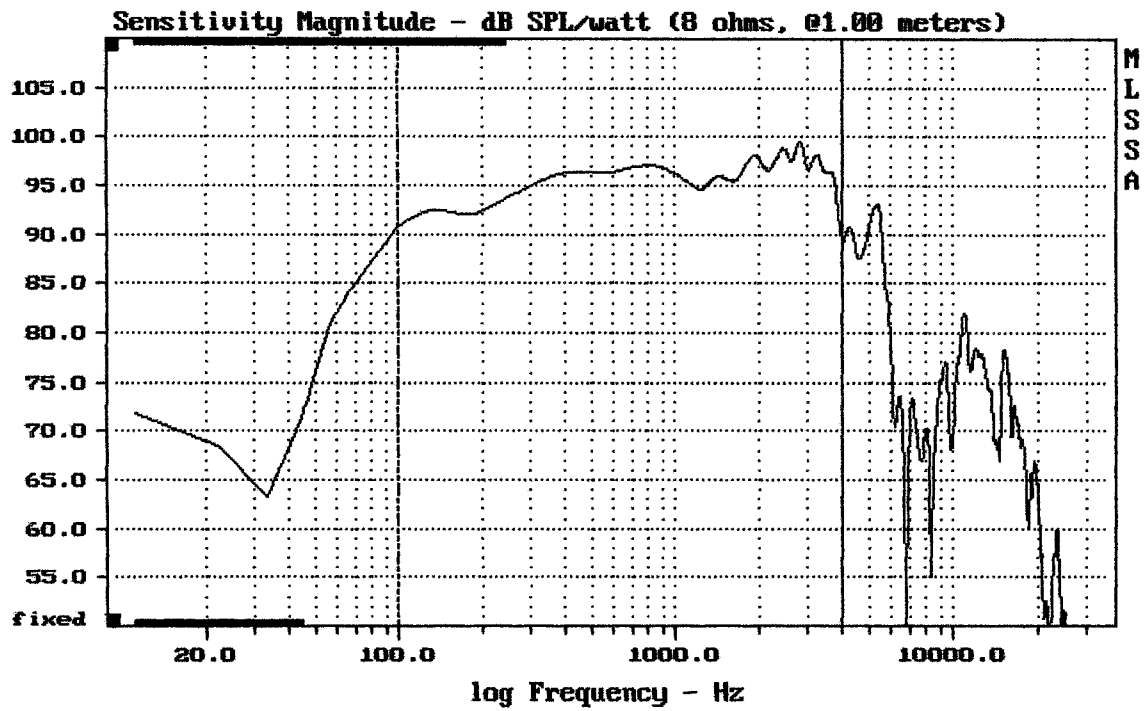
DTTO



mean: -4.764e-007, rms: 0.0004051, std: 0.0004051, max: 0.003017, min: -0.0047

DRIVER + HORN VRF129i

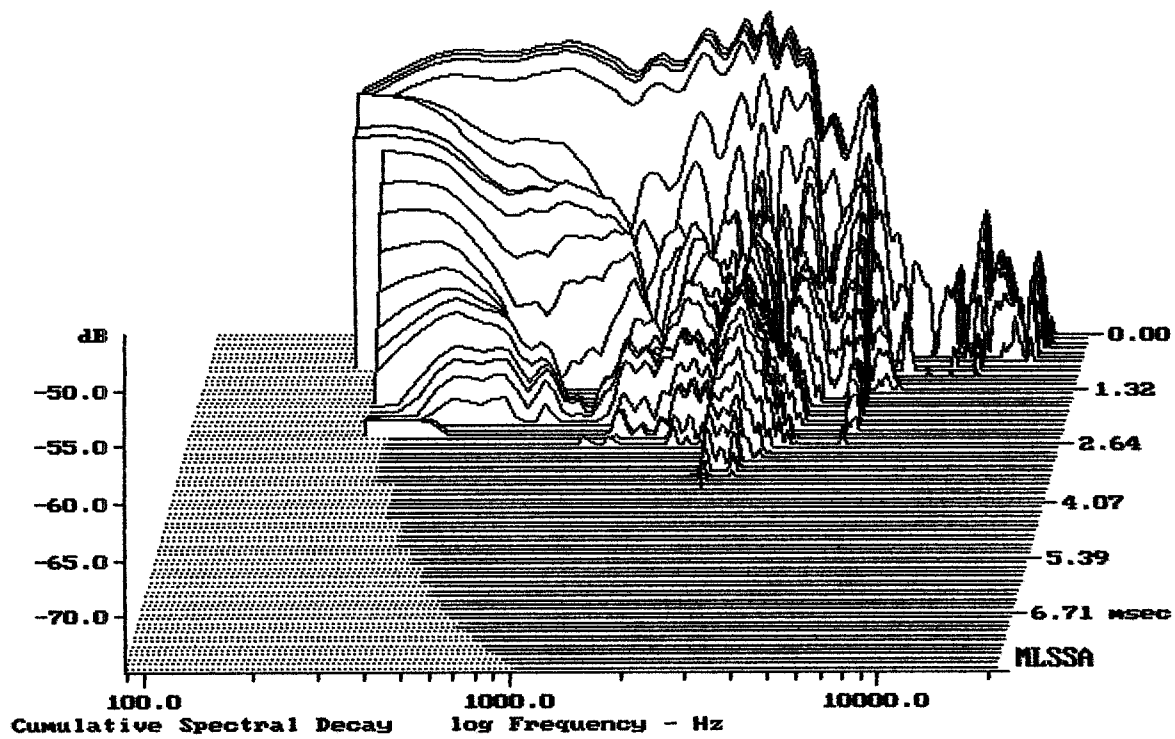
MLSSA: Time Domain



Level (100:4006 Hz) = 95.72 dB SPL/watt (8 ohms, @1.00 meters)

12" UFR129i

MLSSA: Frequency Domain



-74.48 dB, 2353 Hz (53), 3.520 msec (33)

DTTO

Measured Data

QC Limits

Line	Parameter	Value	Units
1	RMSE-free	0.33	Ohms
2	Fs	59.64	Hz
3	Re	5.95	Ohms[dc]
4	Res	64.33	Ohms
5	Qms	5.14	
6	Qes	0.48	
7	Qts	0.44	
8	L1	0.73	mH
9	L2	1.27	mH
10	R2	4.05	Ohms
11	RMSE-load	0.37	Ohms
12	Vas(Sd)	70.40	liters
13	Mms	43.22	grams
14	Cms	165	μ M/Newton
15	B1	14.24	Tesla-M
16	SPLref(Sd)	96.8	dB[Re]
17	Rub-index	0.00	

Method: Mass-loaded (40.00 grams)

Area (Sd): 551.55 sq cm

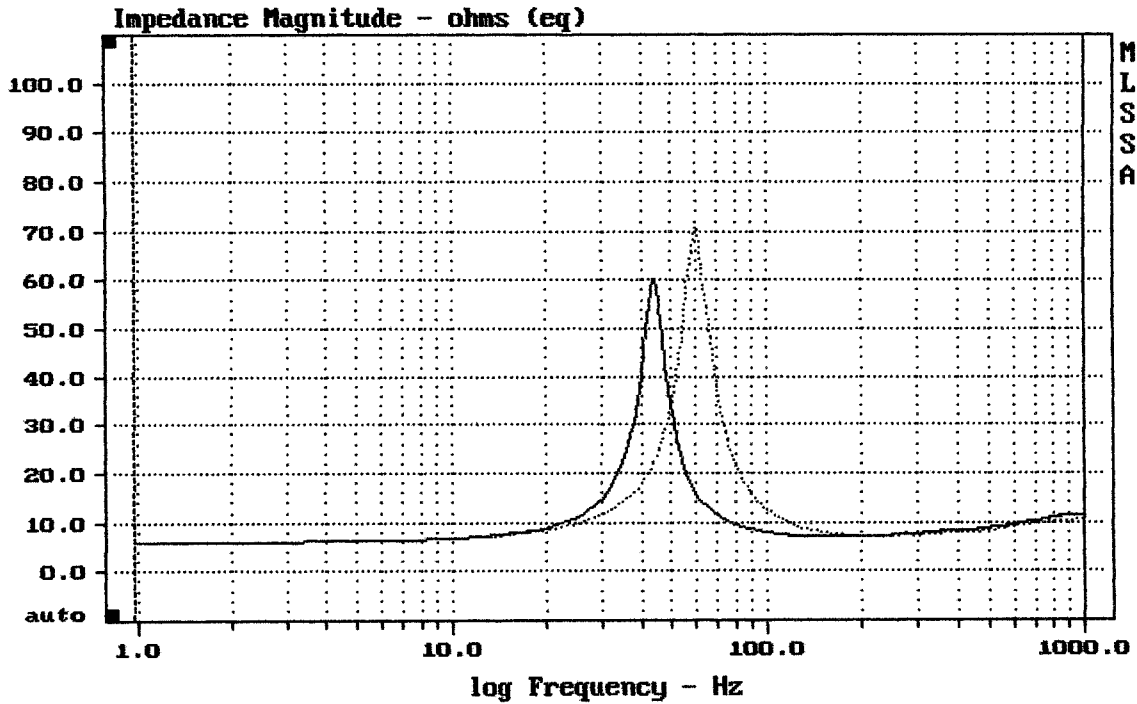
DCR mode: Measure (-0.11 ohms)

QC file: CLOSED

Analysis successful. Shift in Fs = -26.3% (-20% to -50% is recommended).

T5824A FROM VRF129i

MLSSA: Parameters



mean: 10.33, rms: 12.52, std: 7.07, max: 71.18, min: 6.016

DTTO

MLSSA: Frequency Domain