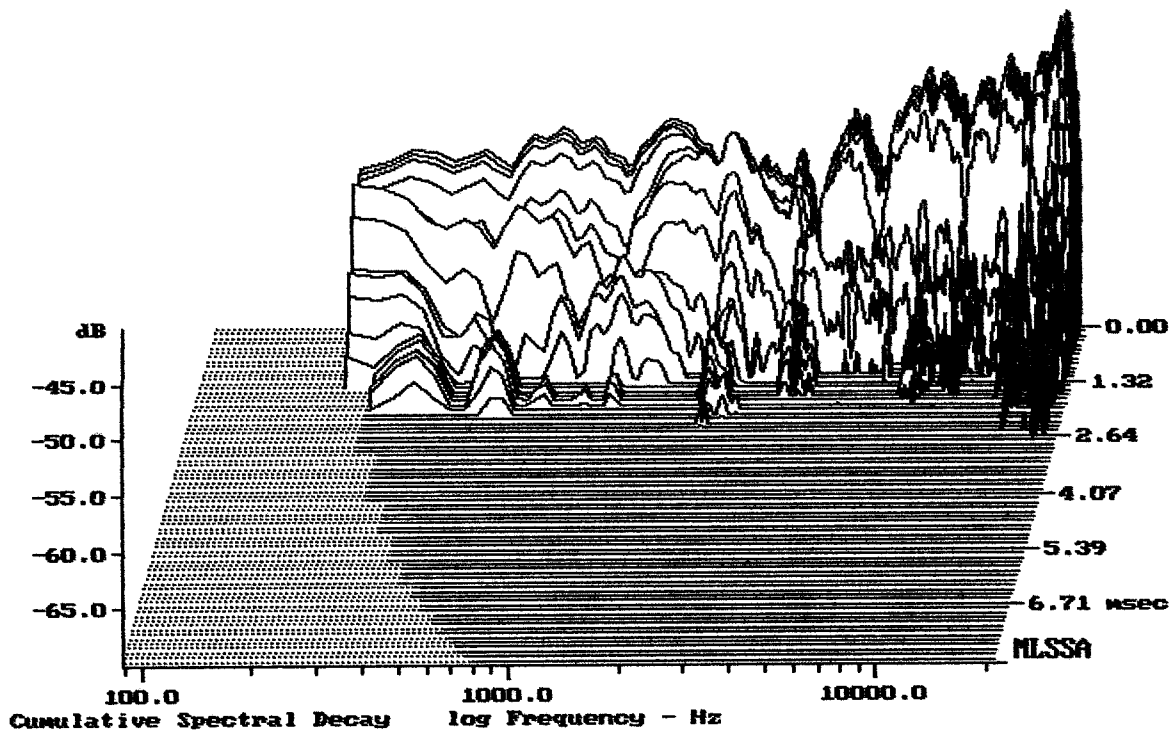


Level (89:22785 Hz) = 98.41 dB SPL/watt (8 ohms, @1.65 meters)

FOCUX X-14

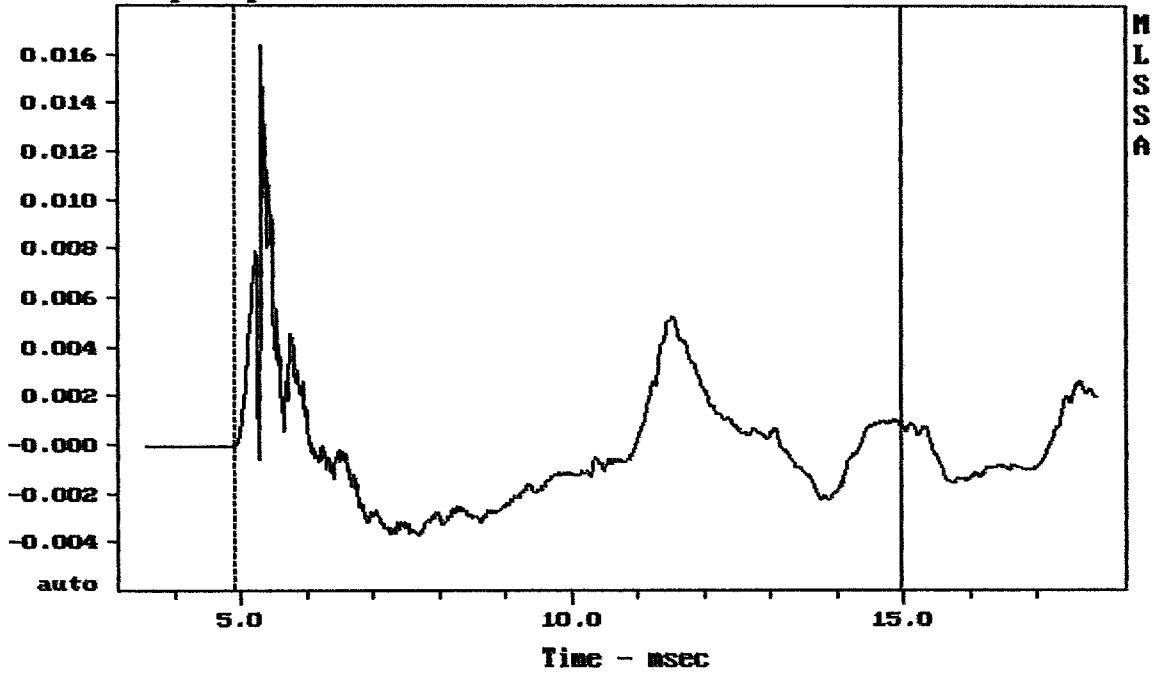
MLSSA: Frequency Domain



-68.80 dB, 2219 Hz (50), 2.310 msec (22)

DTTO

Step Response - volts

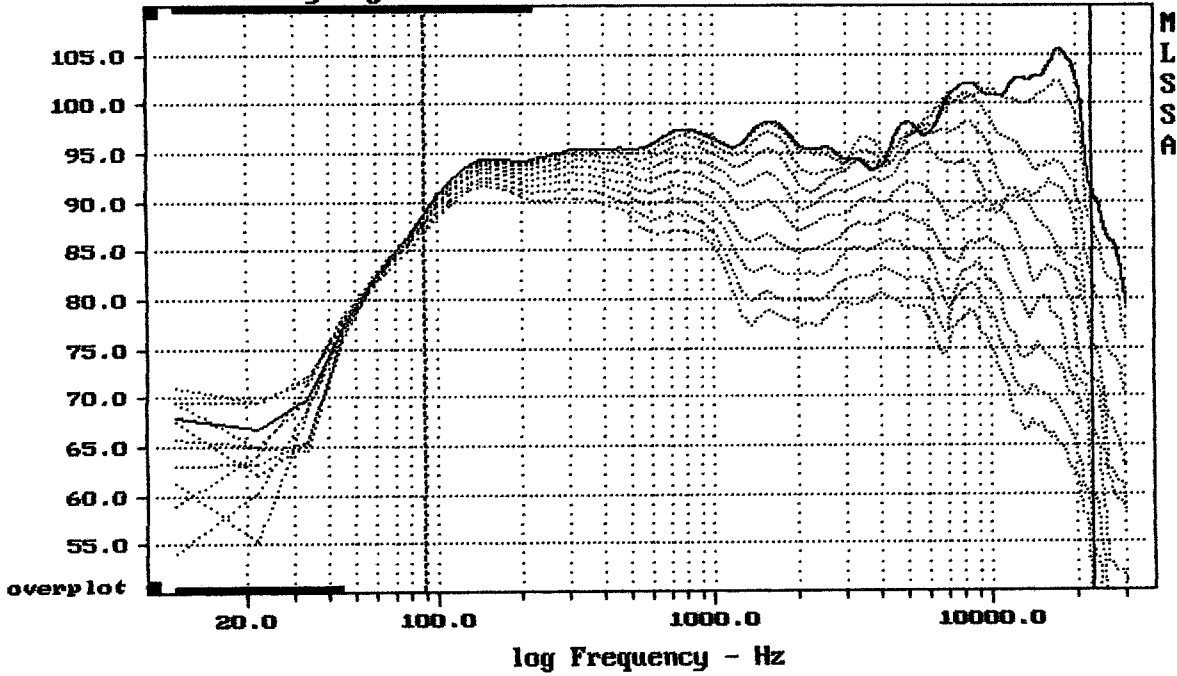


mean: -0.0001918, rms: 0.002752, std: 0.002745, max: 0.01634, min: -0.00372

FOCUX X-14

MLSSA: Time Domain

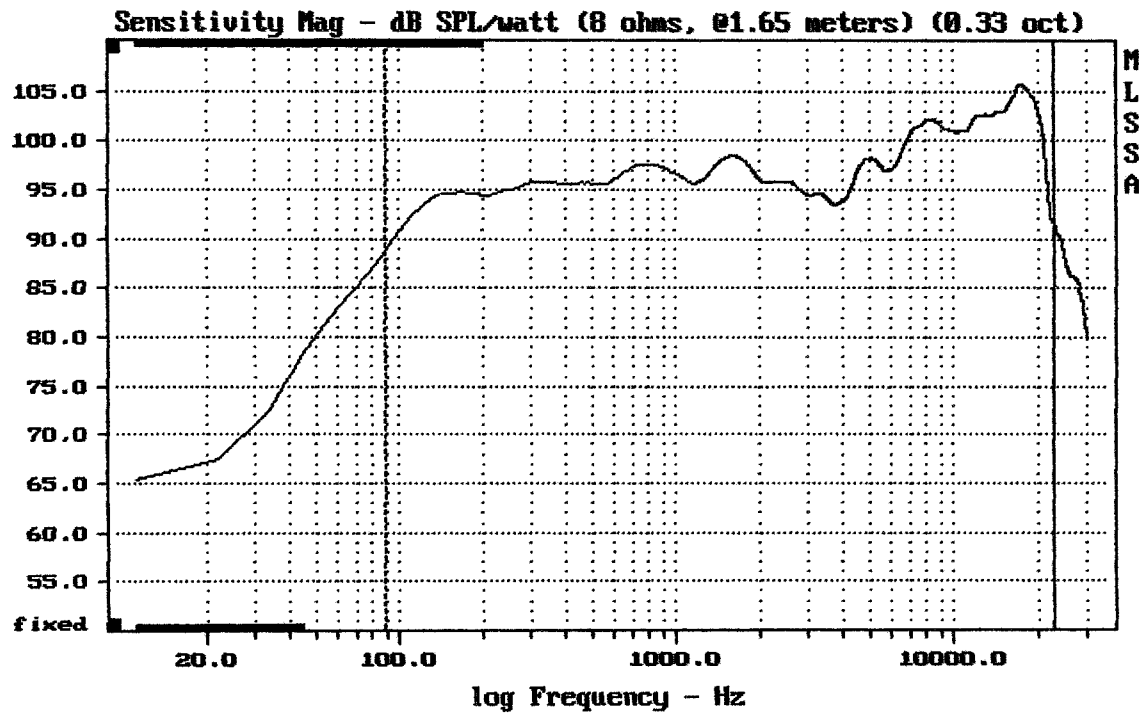
Sensitivity Mag - dB SPL/watt (8 ohms, 01.65 meters) (0.33 oct)



Overlay Compare: dev= +27/-14, std= 10, avg= -29

FOCUX X-14

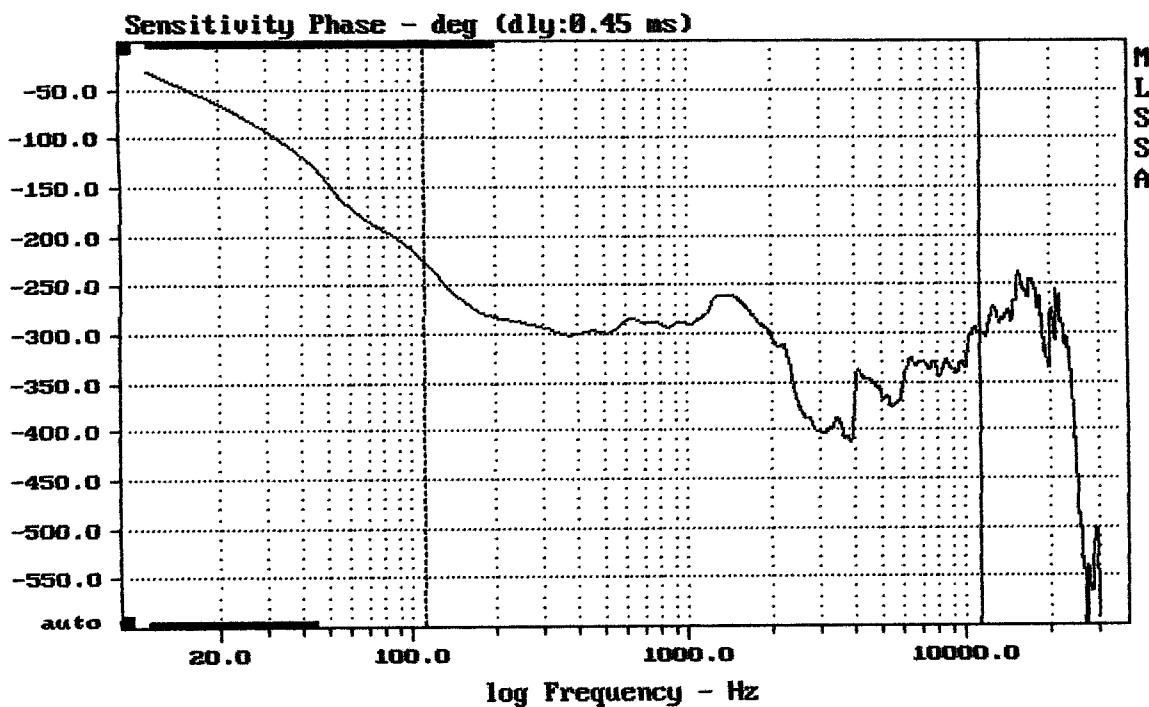
MLSSA: Frequency Domain



mean: 101.04, rms: 101.62, std: 2.76, max: 105.73, min: 88.83

FOCUX X-14

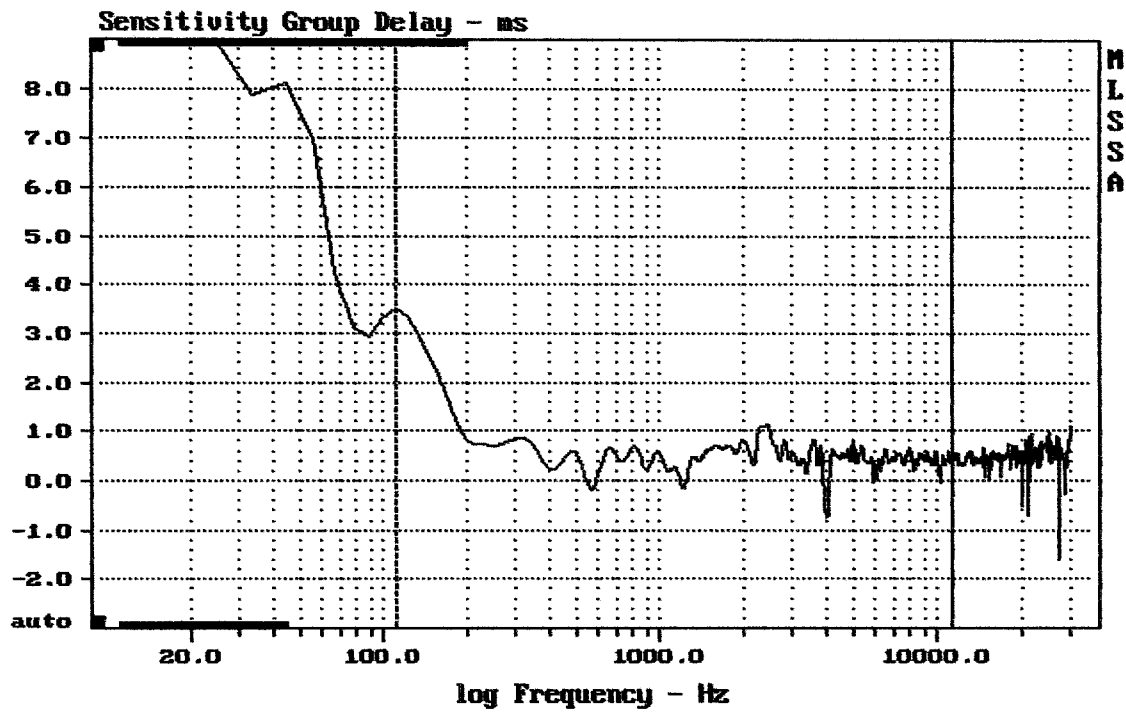
MLSSA: Frequency Domain



mean: -333.9, rms: 335.8, std: 36, max: -225.4, min: -412.7

FOCUX X-14

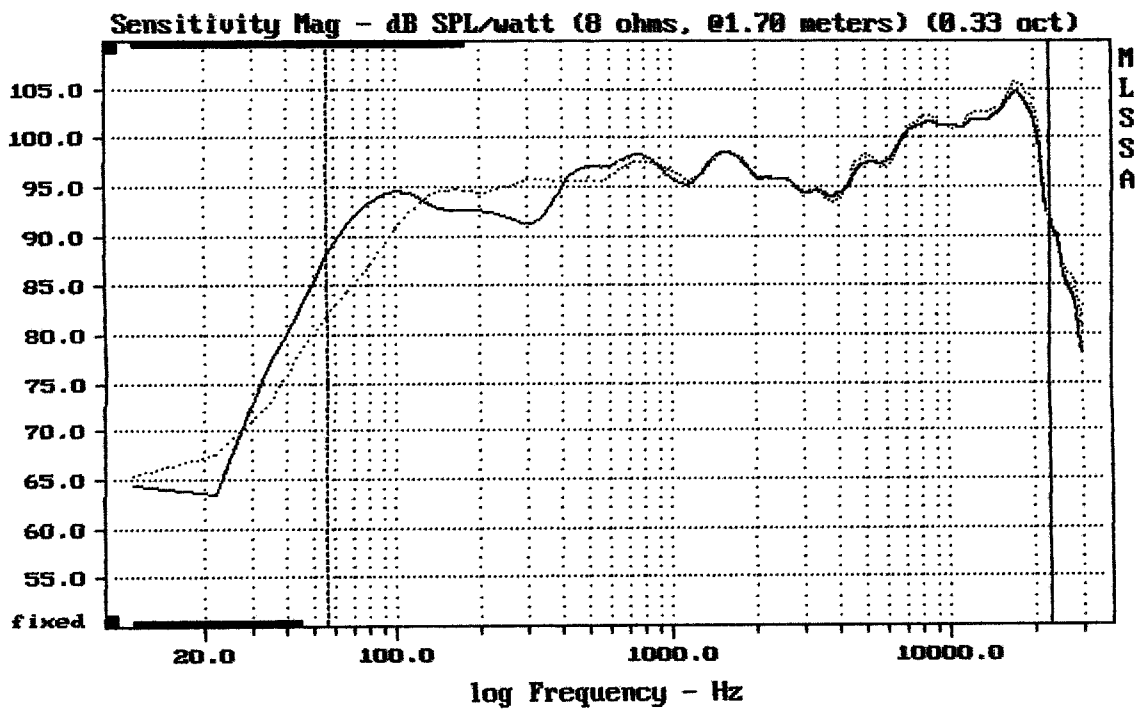
MLSSA: Frequency Domain



mean: 0.4682, rms: 0.554, std: 0.2962, max: 3.5, min: -0.7351

FOCUX X-14

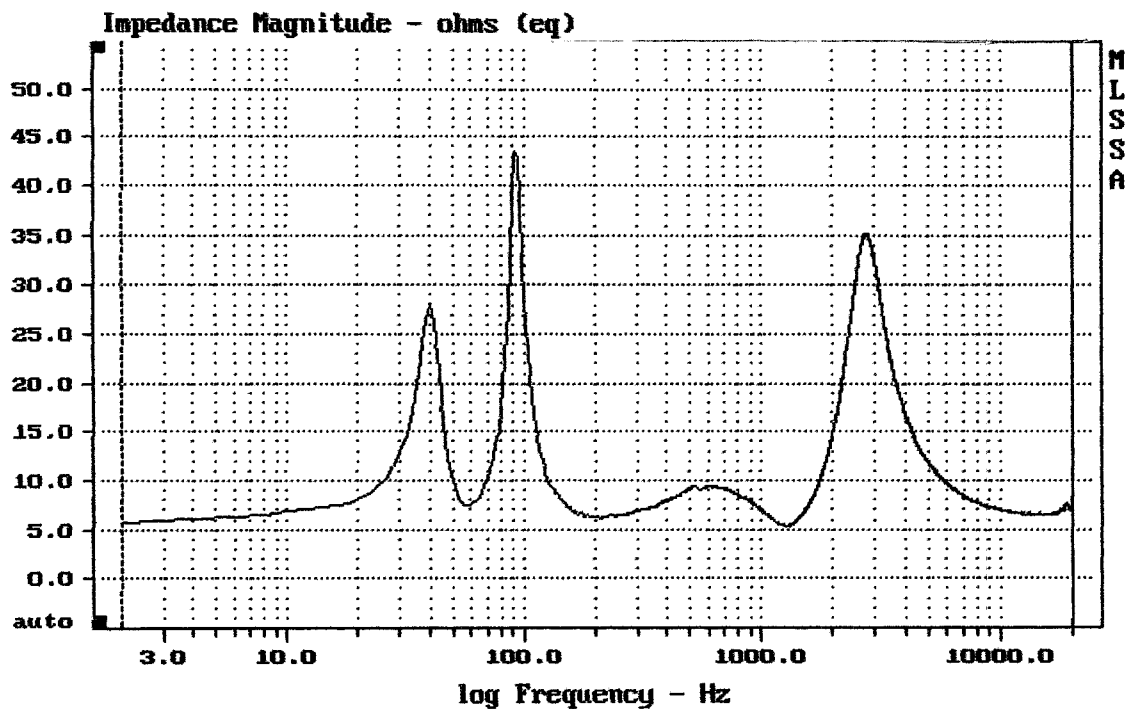
MLSSA: Frequency Domain



Overlay Compare: dev= +7.3/-4.2, std= 0.72, avg= -0.42

— FLOOR

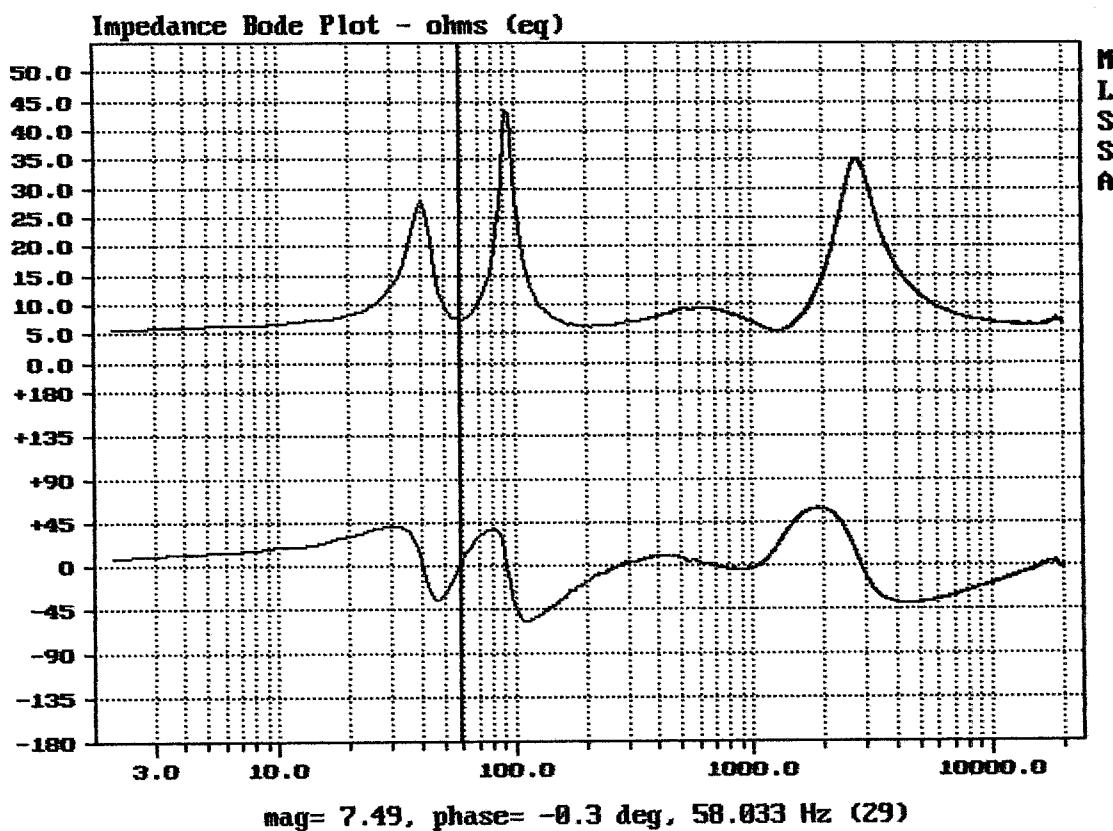
MLSSA: Frequency Domain



mean: 9.593, rms: 11.35, std: 6.869, max: 43.51, min: 5.354

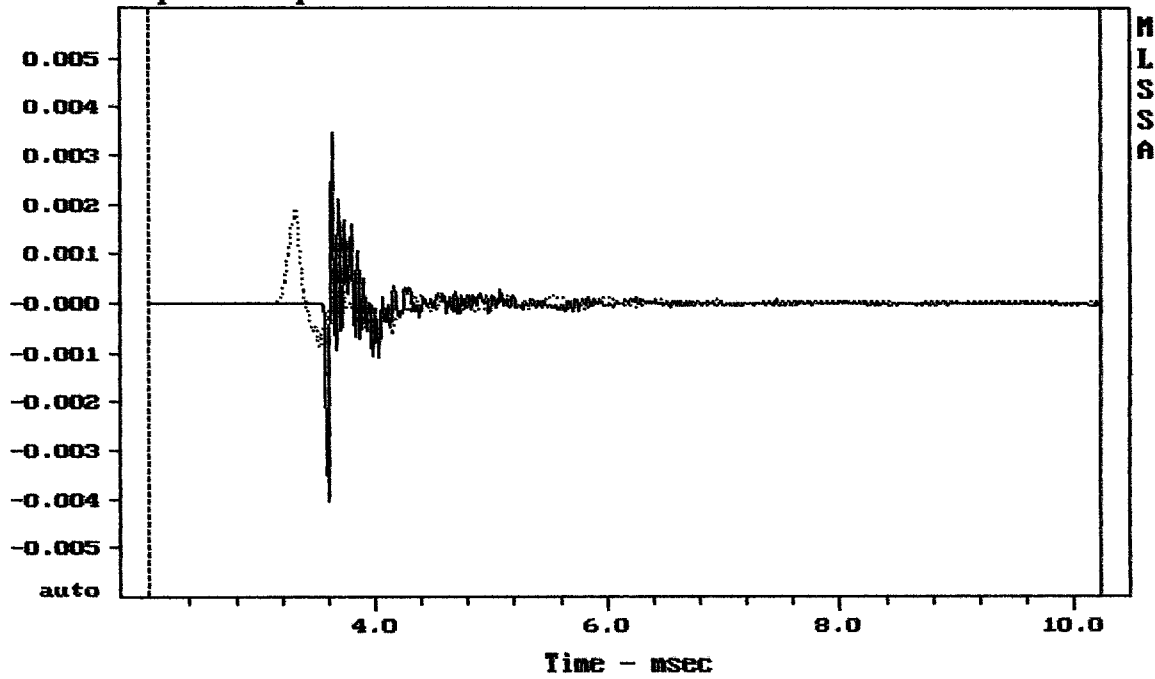
FOCUX X-14

MLSSA: Frequency Domain



DTTO

Impulse Response - volts

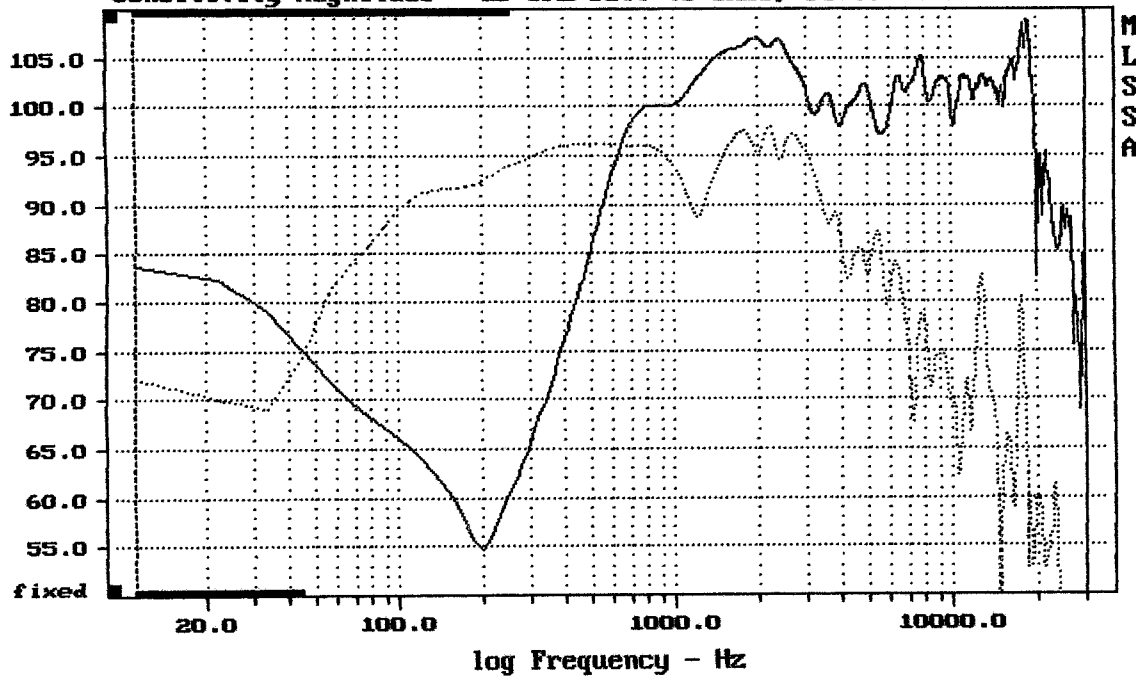


CURSOR: $dy = 2.76147e-005$ $x = 10.2300$ (930)

FOCUX X14

MLSSA: Time Domain

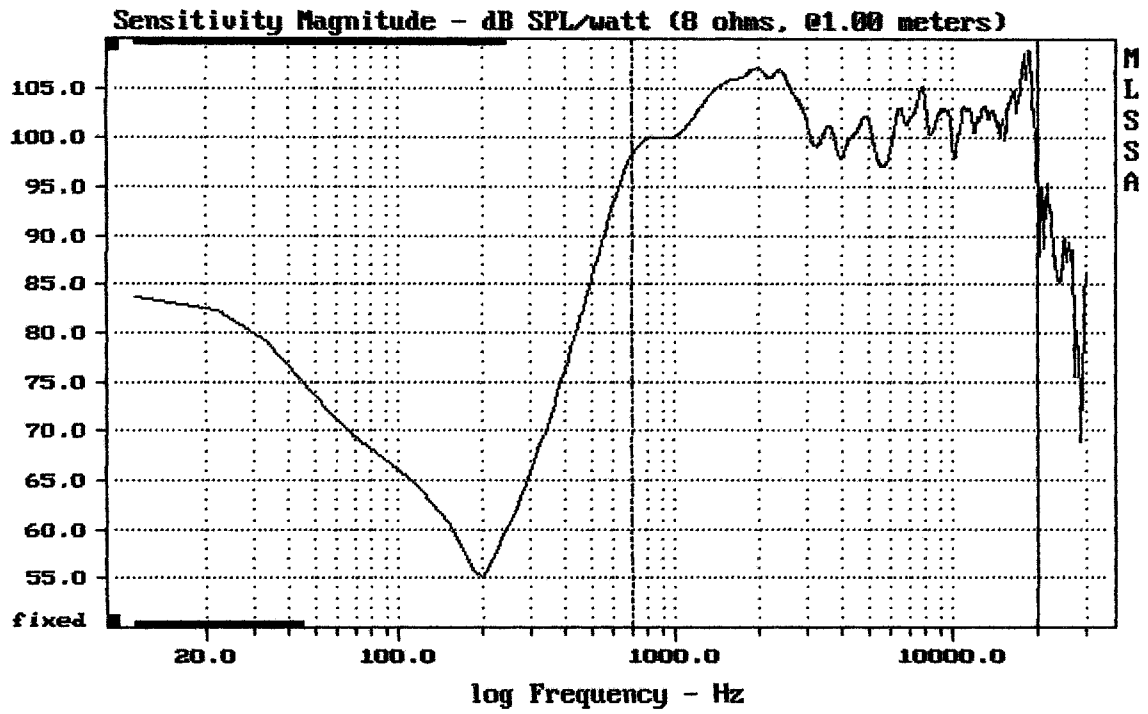
Sensitivity Magnitude - dB SPL/watt (8 ohms, @1.00 meters)



CURSOR: $dy = -50.5426$ $x = 30007.1014$ (2704)

FOCUX X14

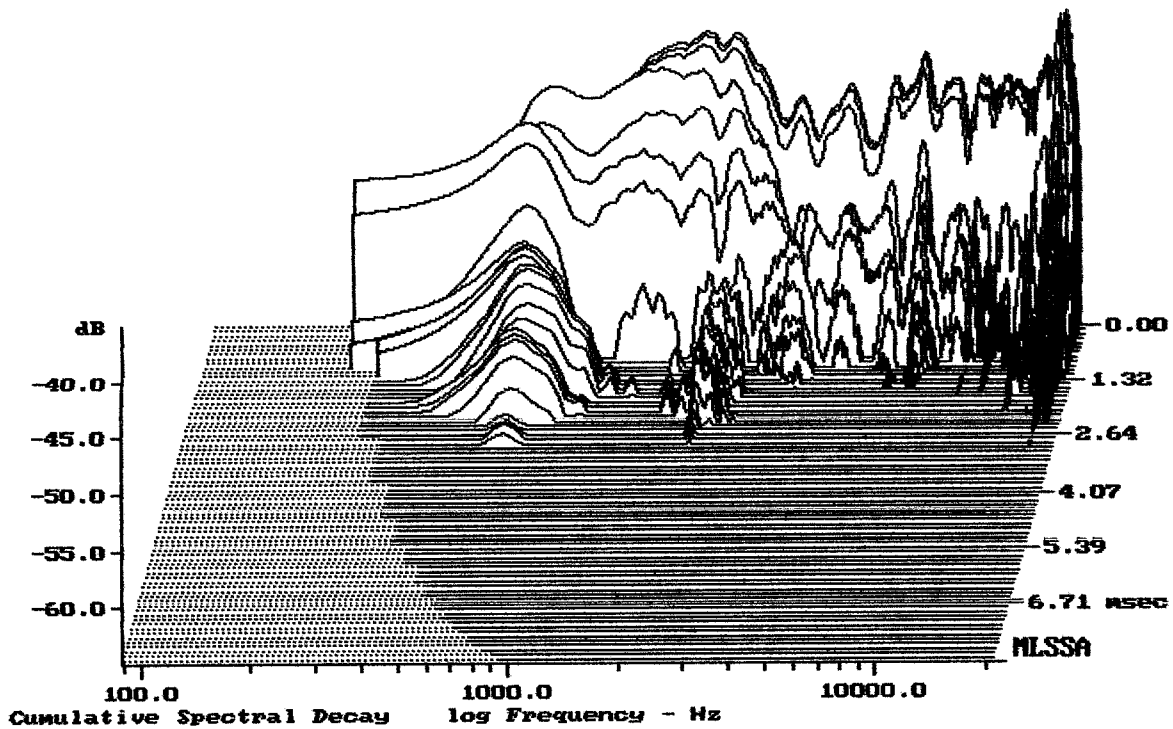
MLSSA: Frequency Domain



Level (699:19997 Hz) = 103.19 dB SPL/watt (8 ohms, @1.00 meters)

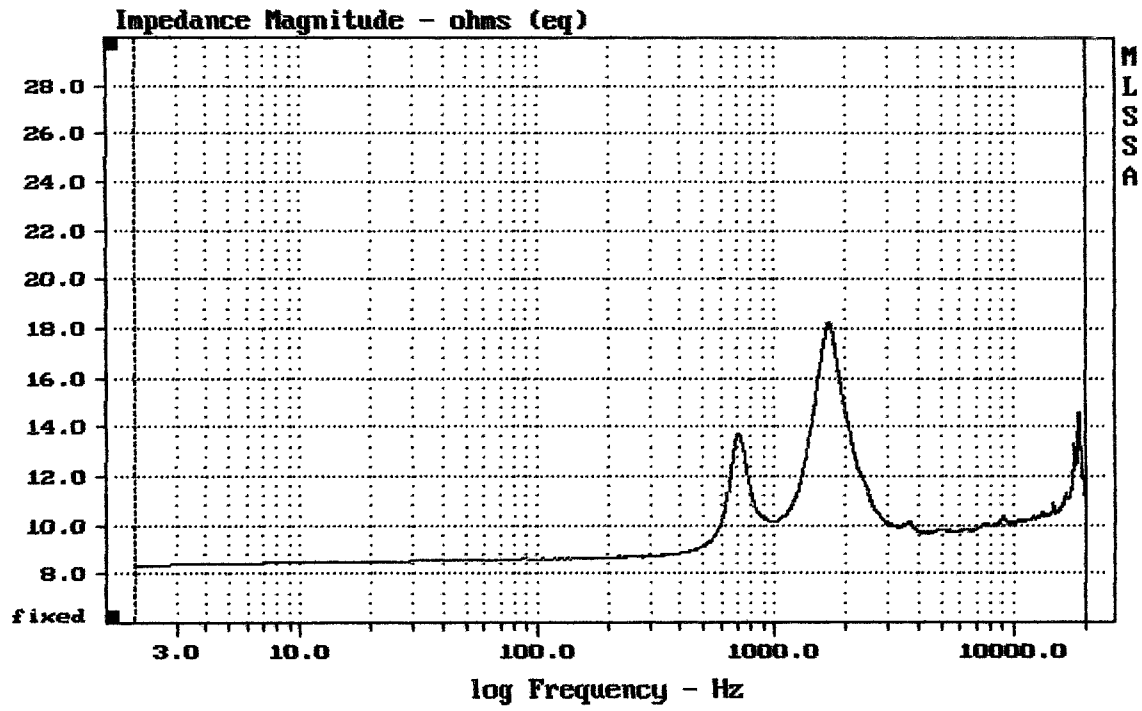
FOCUX X14

MLSSA: Frequency Domain



-64.14 dB, 2131 Hz (48), 2.758 msec (26)

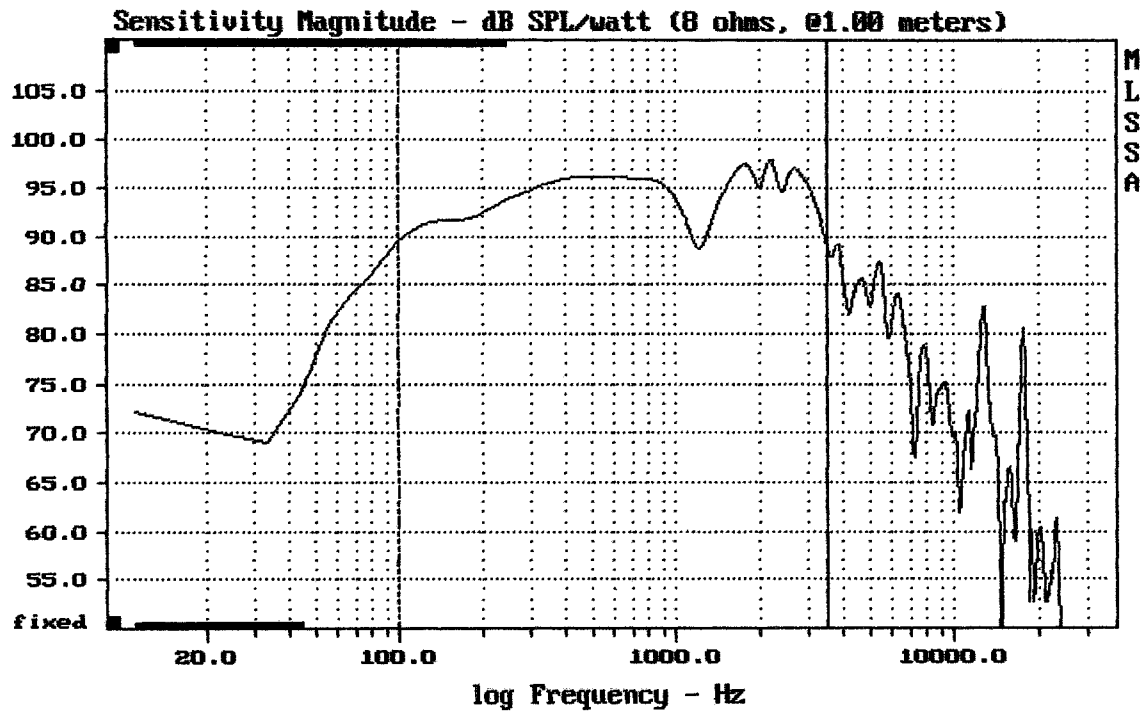
DTTO



mean: 10.78, rms: 10.87, std: 1.448, max: 18.26, min: 8.363

FOCUX X-14

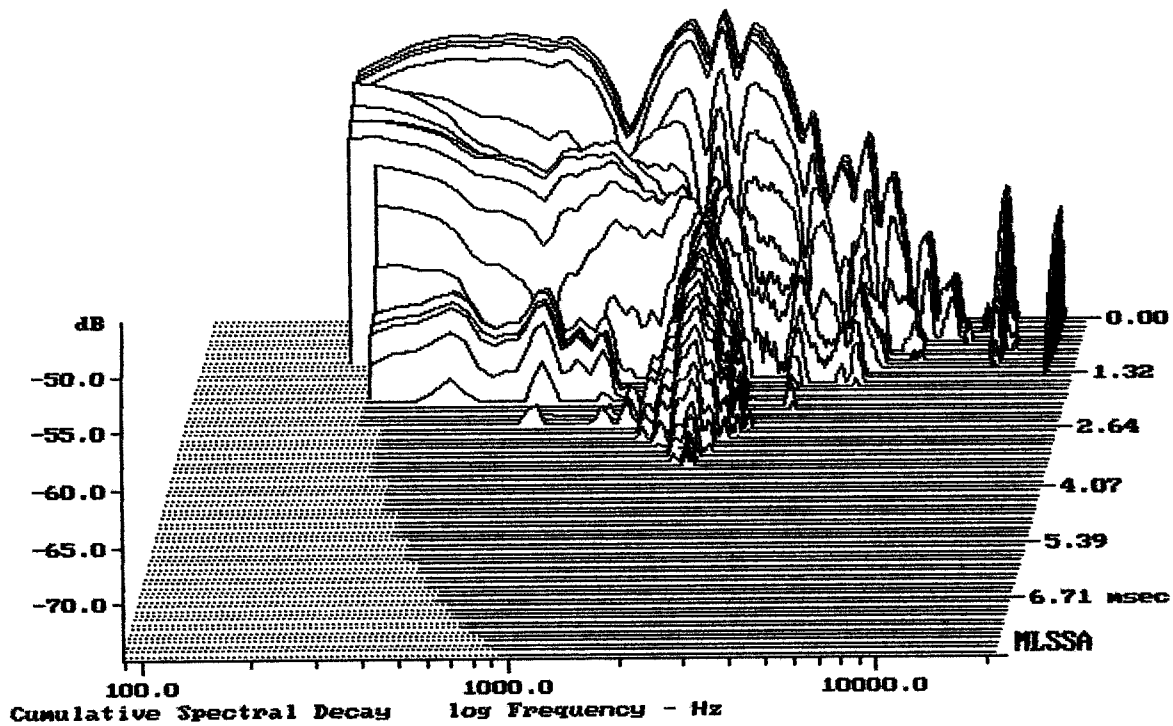
MLSSA: Frequency Domain



Level (100:3507 Hz) = 94.66 dB SPL/watt (8 ohms, @1.00 meters)

FOCUX X14

MLSSA: Frequency Domain



-73.42 dB, 2219 Hz (50), 3.520 msec (33)

DTTO

Measured Data

QC Limits

Line	Parameter	Value	Units
1	RMSE-free	0.57	Ohms
2	Fs	72.60	Hz
3	Re	5.23	Ohms[dc]
4	Res	50.68	Ohms
5	Qms	4.76	
6	Qes	0.49	
7	Qts	0.45	
8	L1	0.68	mH
9	L2	1.25	mH
10	R2	4.53	Ohms
11	RMSE-load	0.39	Ohms
12	Vas(Sd)	35.18	liters
13	Mms	49.92	grams
14	Cms	96	μ M/Newton
15	B1	15.56	Tesla-M
16	SPLref(Sd)	96.2	dB[Re]
17	Rub-index	0.01	

Method: Mass-loaded (70.00 grams)

Area (Sd): 510.00 sq cm

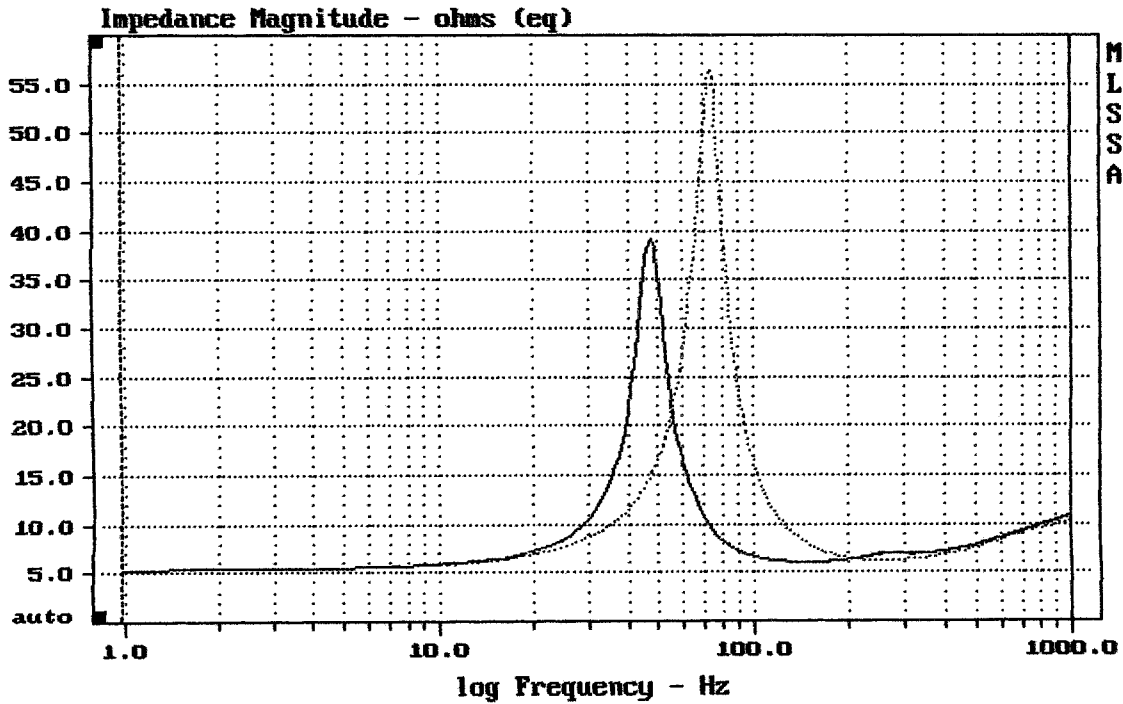
DCR mode: Measure (-0.11 ohms)

QC file: CLOSED

Analysis successful. Shift in Fs = -35.0% (-20% to -50% is recommended).

FOCUX X-14

MLSSA: Parameters



mean: 9.554, rms: 11.39, std: 6.194, max: 56.35, min: 5.345

FOCUX X-14

MLSSA: Frequency Domain