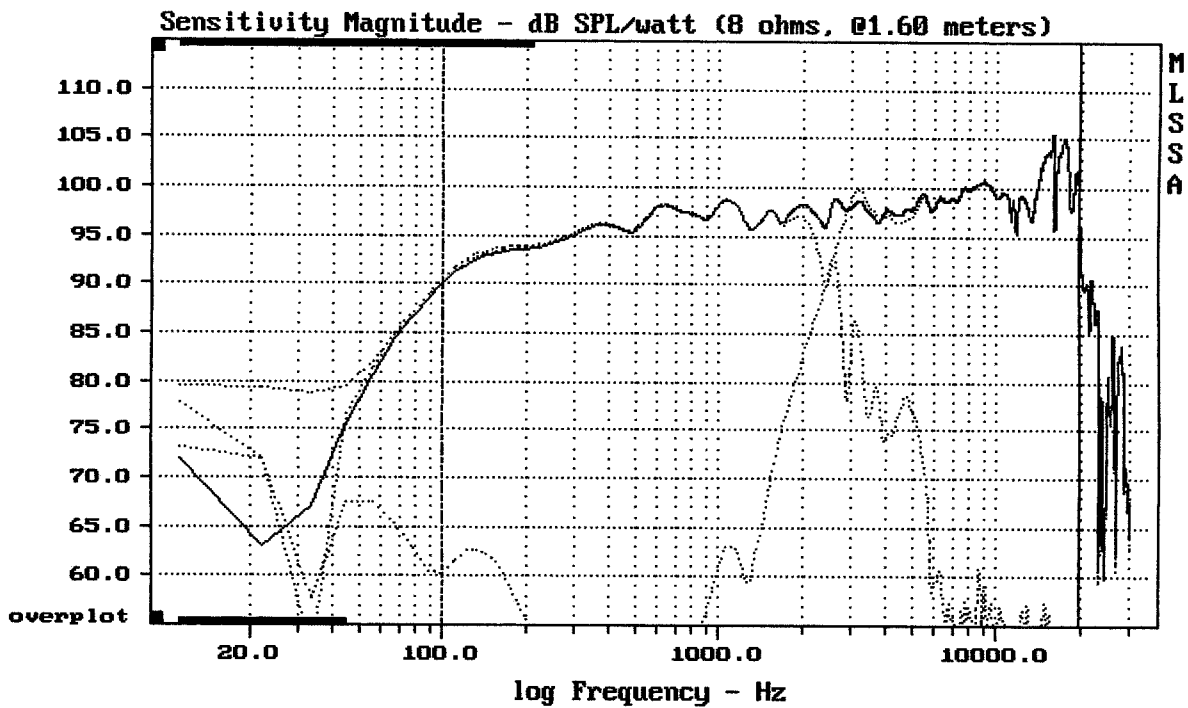


CURSOR: dy = 16.7675 x = 30007.1014 (2704)

Megaton EMC121i - CIARE COD12" + CD131 + FH195

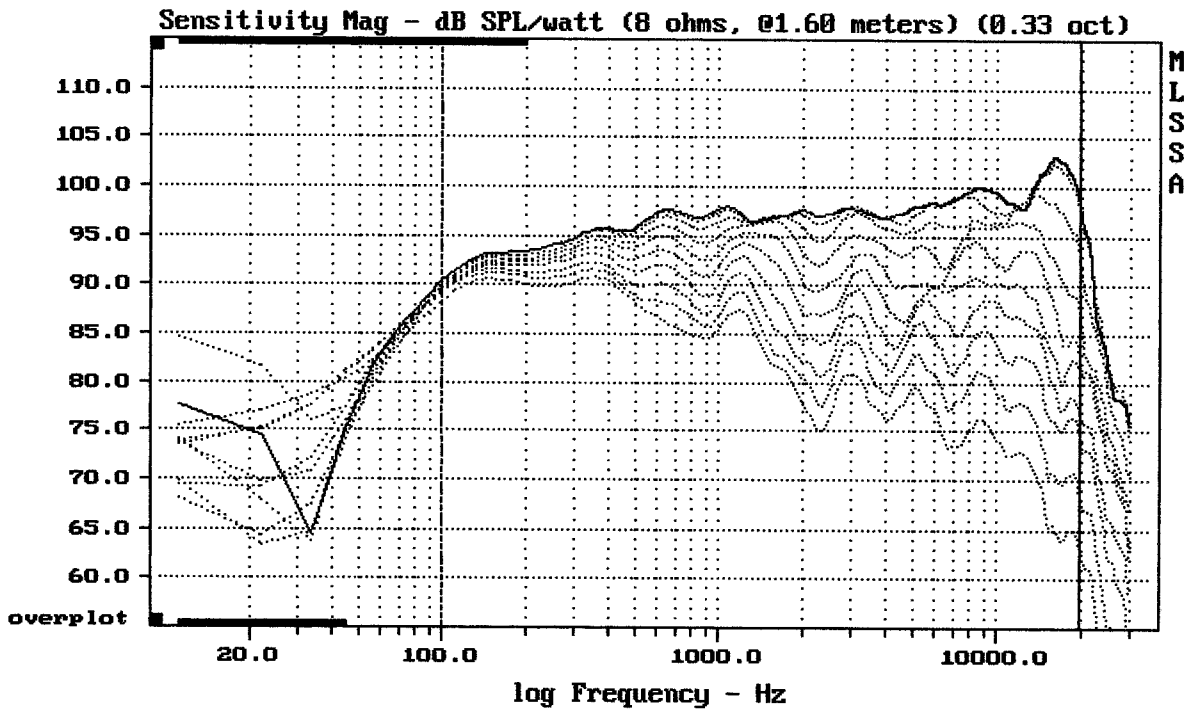
MLSSA: Frequency Domain



Level (100:19909 Hz) = 97.77 dB SPL/watt (8 ohms, 01.60 meters)

Megaton EMC121i - CIARE COD12" + CD130 + FH195

MLSSA: Frequency Domain



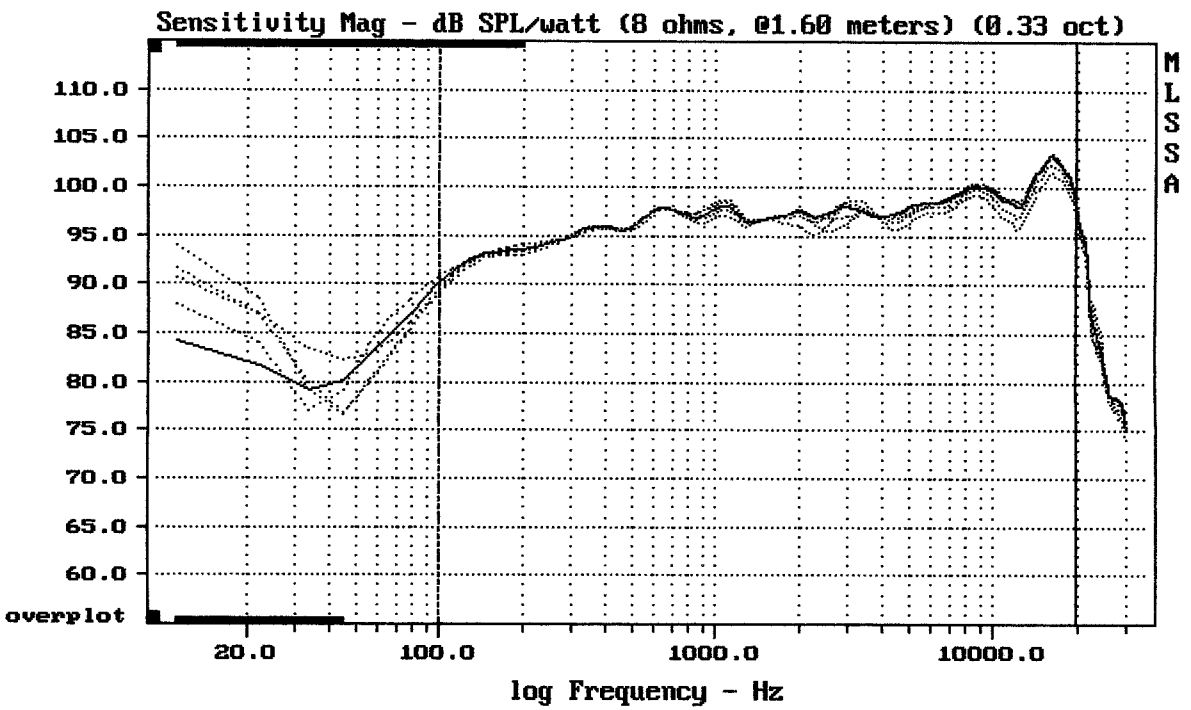

---

Overlay Compare: dev= +24/-13, std= 8.1, avg= -26

---

Megaton EMC121i - CIARE COD12" + CD130 + FH195

MLSSA: Frequency Domain



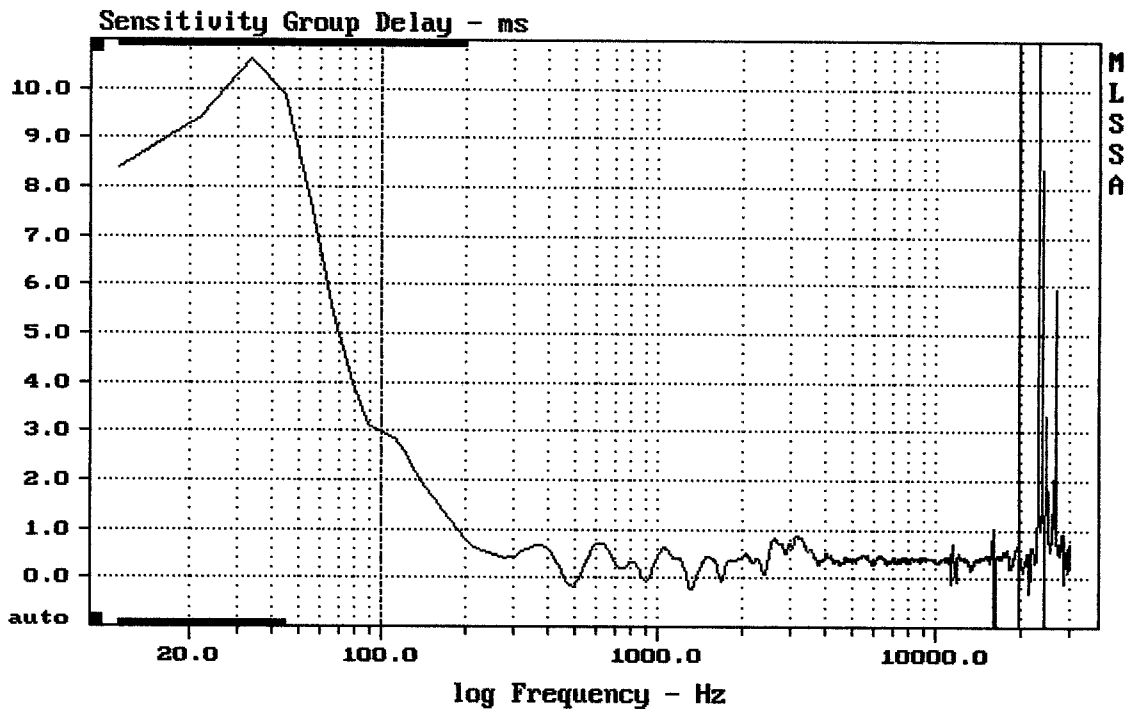

---

Overlay Compare: dev= +2/-1, std= 0.69, avg= -1.3

---

Megaton EMC121i - CIARE COD12" + CD130 + FH195

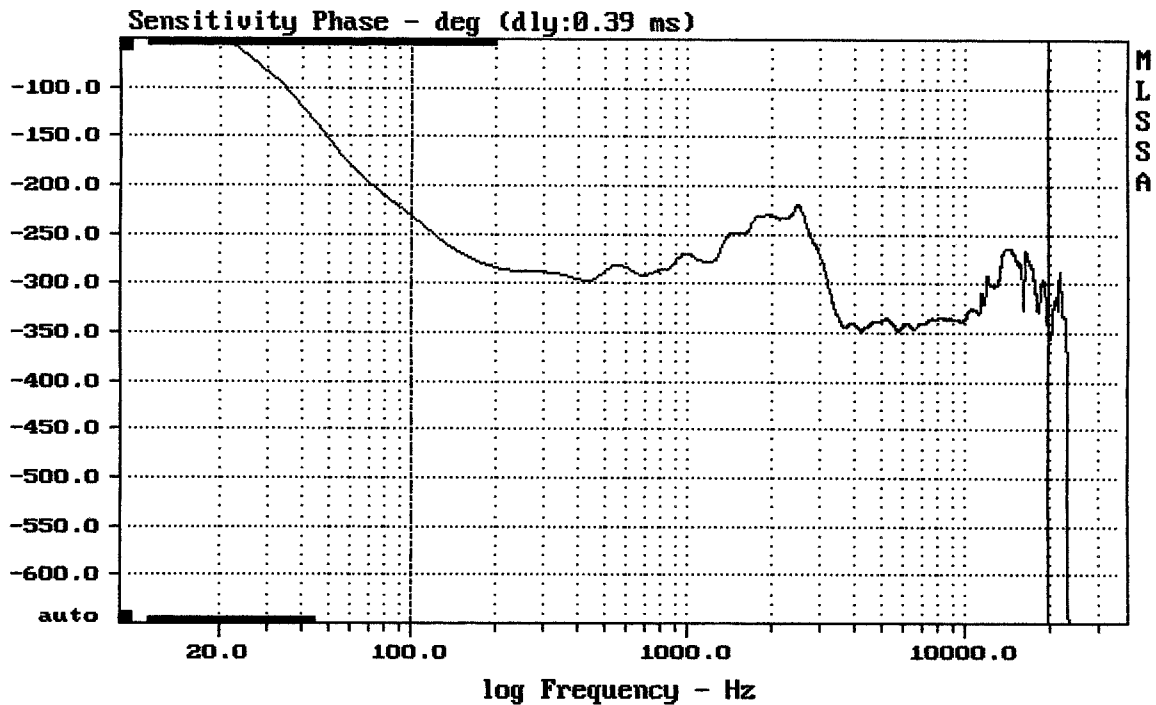
MLSSA: Frequency Domain



mean: 0.4108, rms: 0.464, std: 0.2159, max: 2.985, min: -1.259

Megaton EMC121i - CIARE COD12" + CD130 + FH195

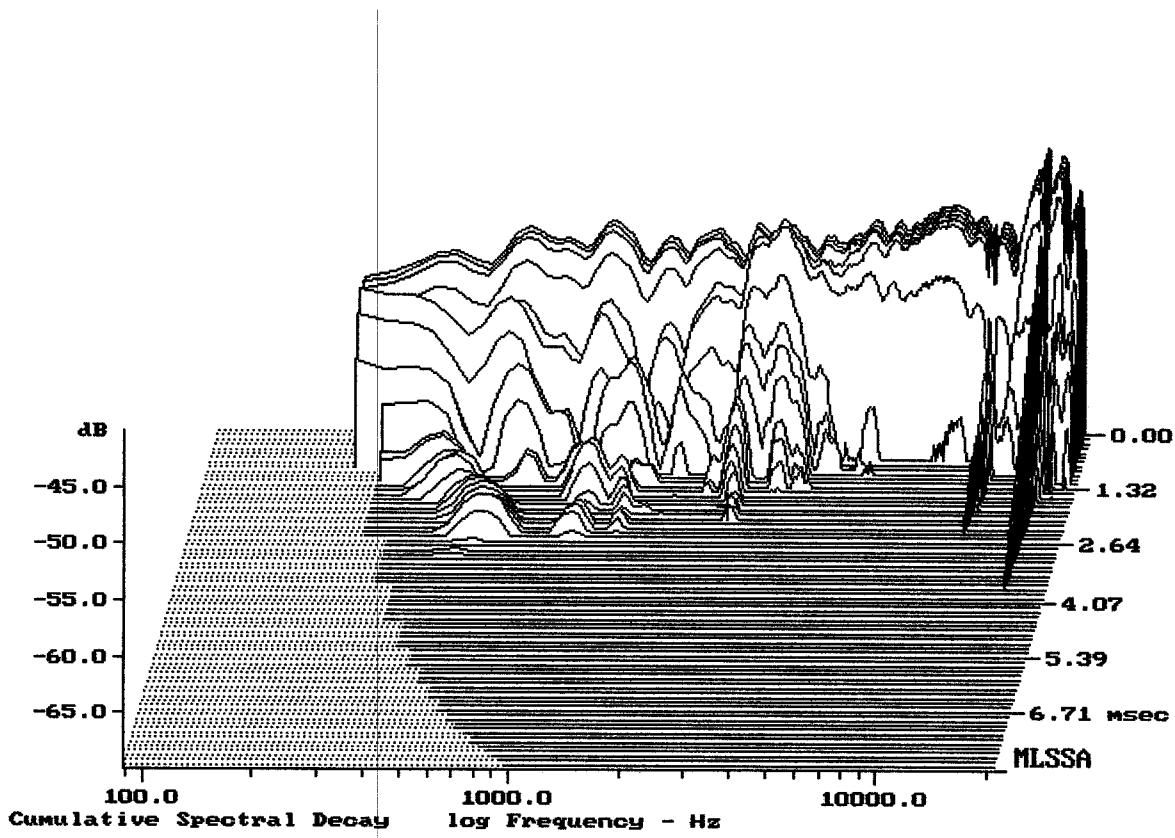
MLSSA: Frequency Domain



mean: -305.8, rms: 307.6, std: 33.28, max: -219.5, min: -355.1

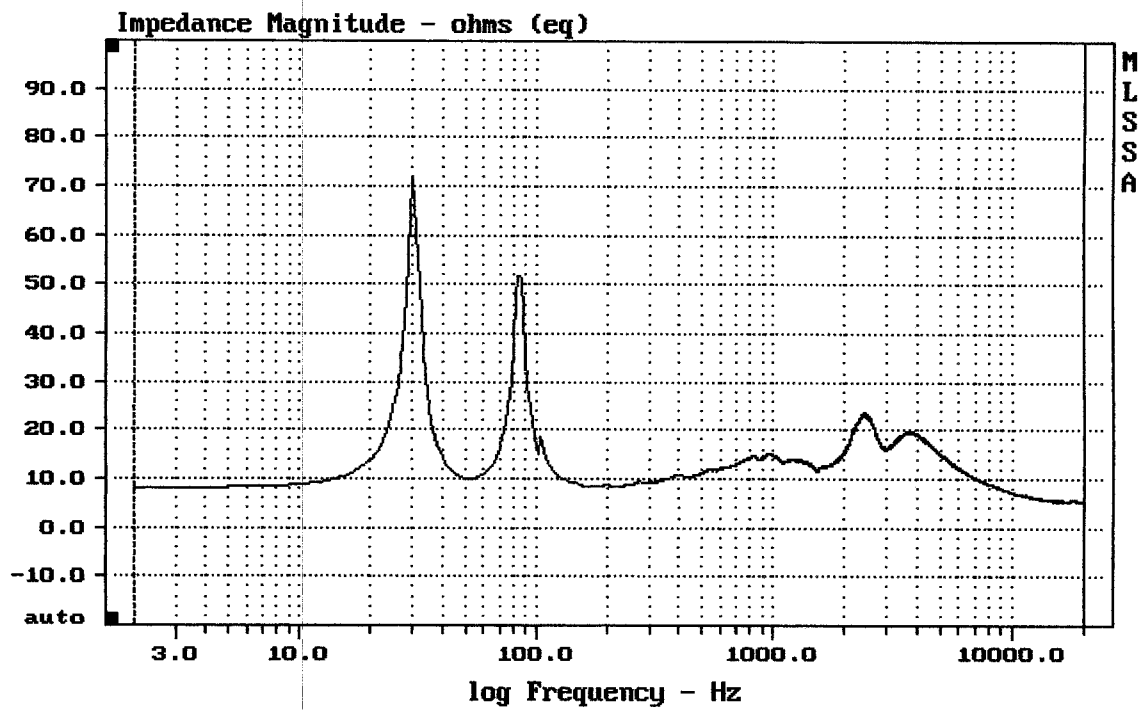
Megaton EMC121i - CIARE COD12" + CD130 + FH195

MLSSA: Frequency Domain



-69.78 dB, 2486 Hz (56), 1.878 msec (18)

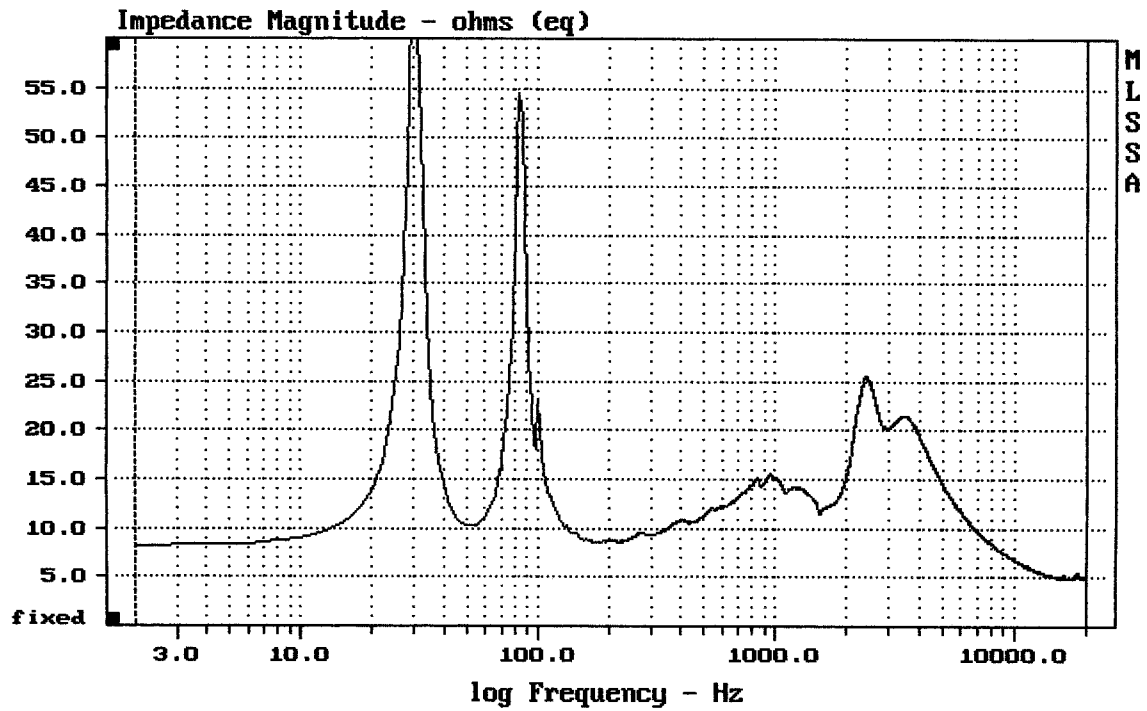
Megaton EMC121i - CIARE COD12" + CD130 + FH195



mean: 9.5, rms: 10.67, std: 4.858, max: 71.58, min: 5.328

DTTO

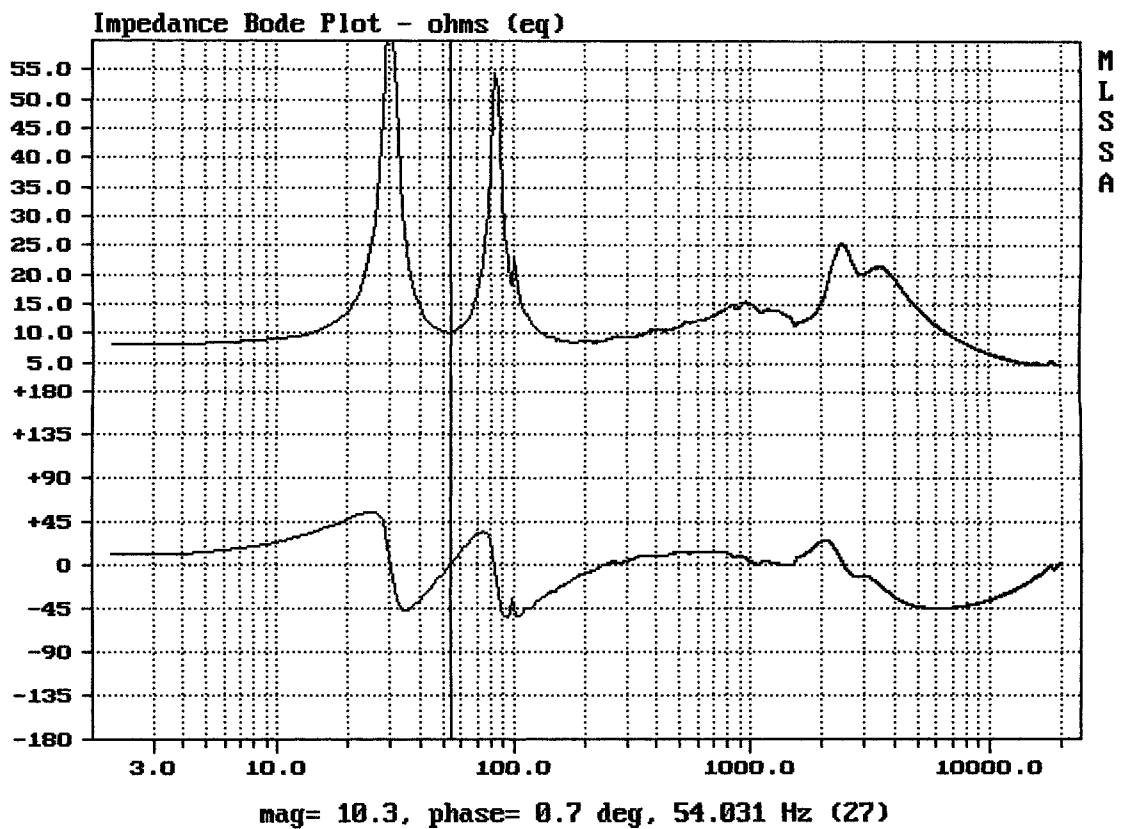
MLSSA: Frequency Domain



mean: 9.354, rms: 10.85, std: 5.487, max: 71.45, min: 4.825

MEGATON EMC121i - CIARE COD 12" + CD130 + FH195

MLSSA: Frequency Domain



DTTO