

## Sestava: EAW SBX220 + Megaton C8045 zvukovod + BMS BMS4590P

### Osazení:

- **BMS BMS4590P** (koaxiální driver s vlastní výhybkou)

<http://eshop.prodance.cz/bms4590p-8-ohm/d-87232/>

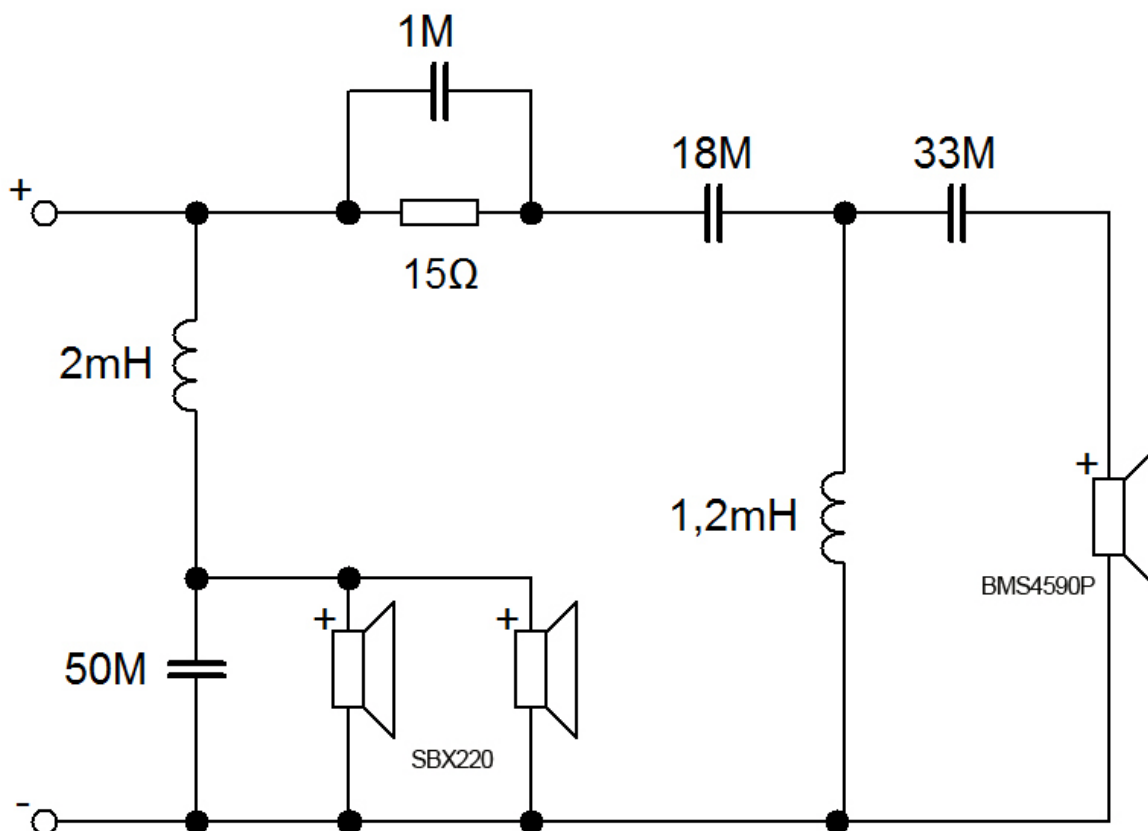
- **Megaton C8045 zvukovod**

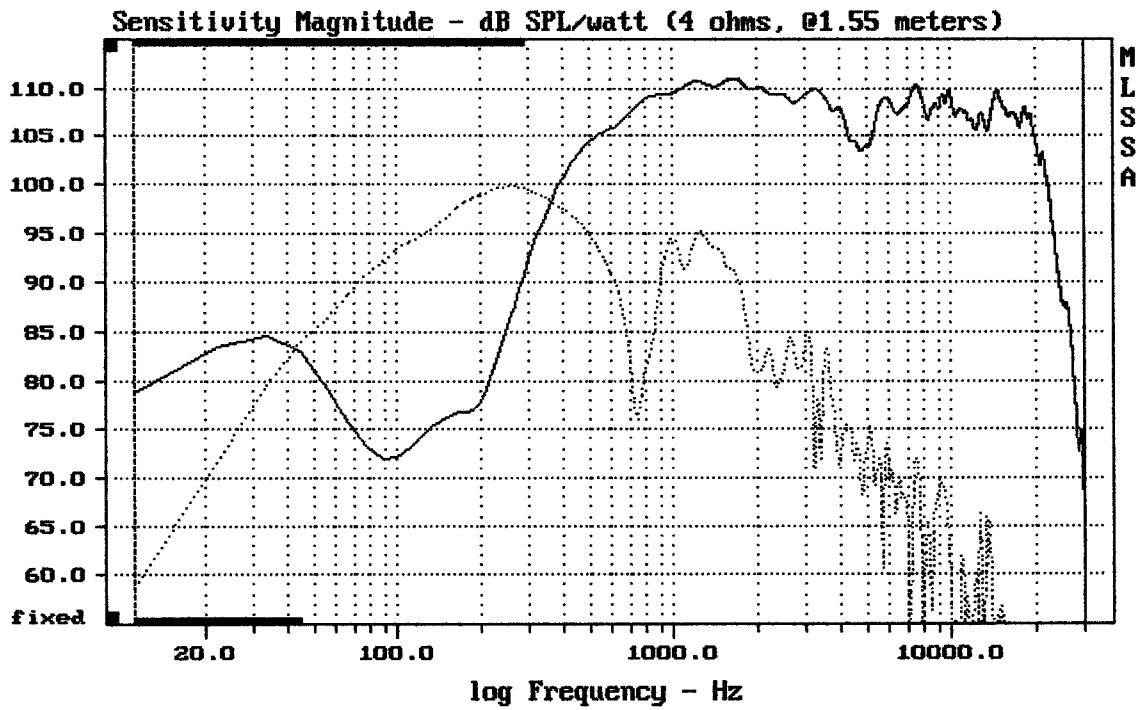
<http://eshop.prodance.cz/c8045-zvukovod/d-84639/>

- **EAW SBX220** (použita jako nejnižší pásmo)

<http://eshop.prodance.cz/sbx220/d-77051/>

### Schéma výhybky:

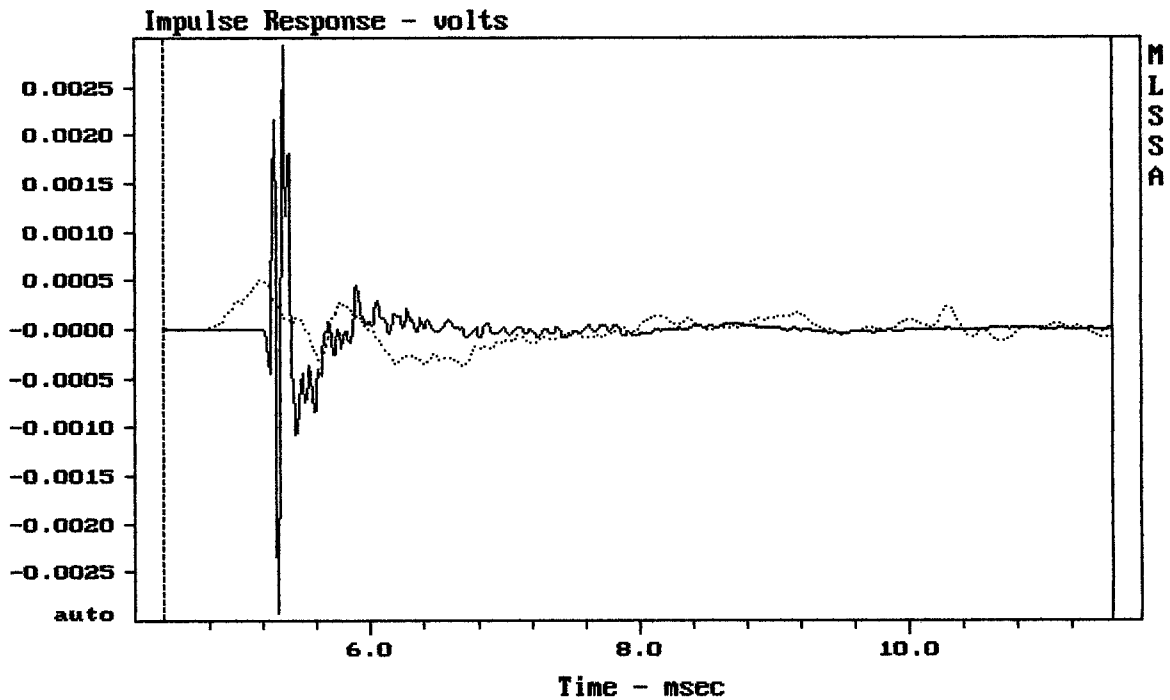




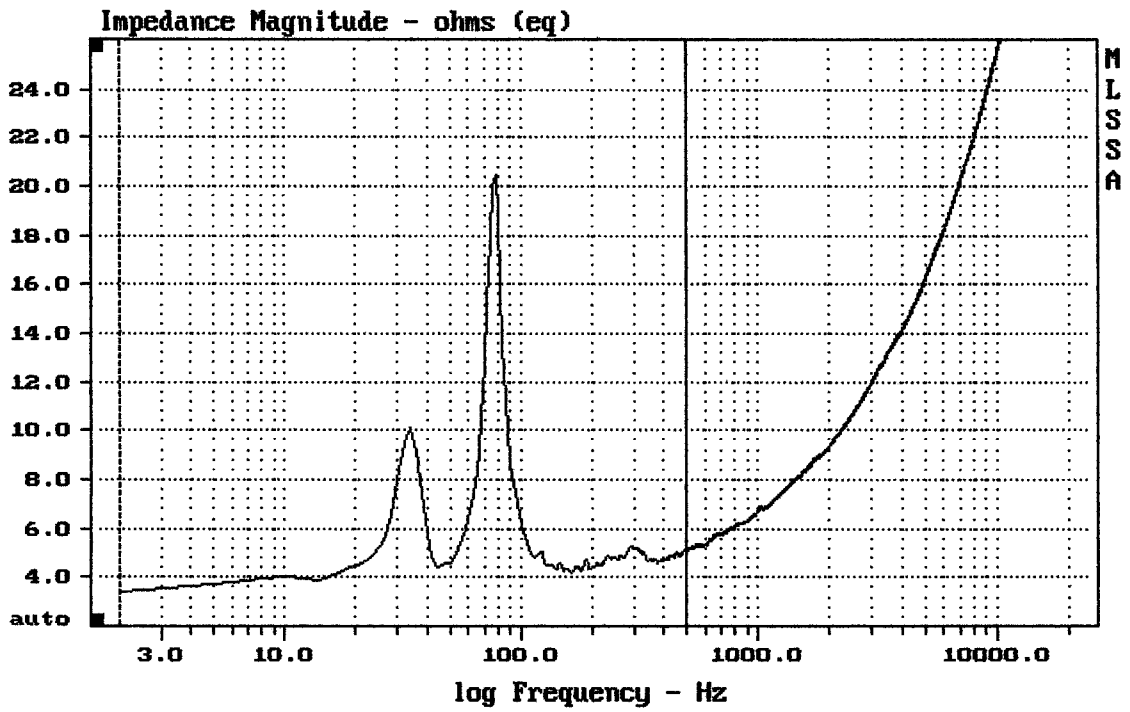
CURSOR:  $dy = -33.9443$   $x = 30007.1014$  (2704)

SBX220 + BMS4590P + C8045

MLSSA: Frequency Domain

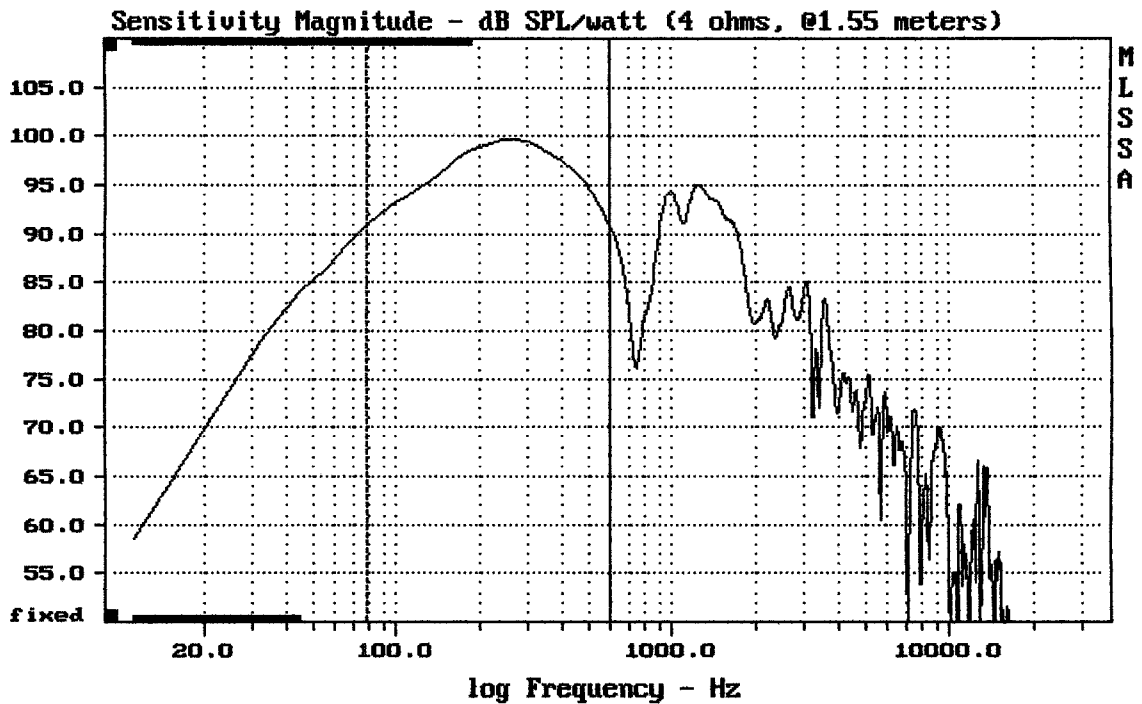


CURSOR:  $dy = -8.69993e-005$   $x = 11.4950$  (1045)

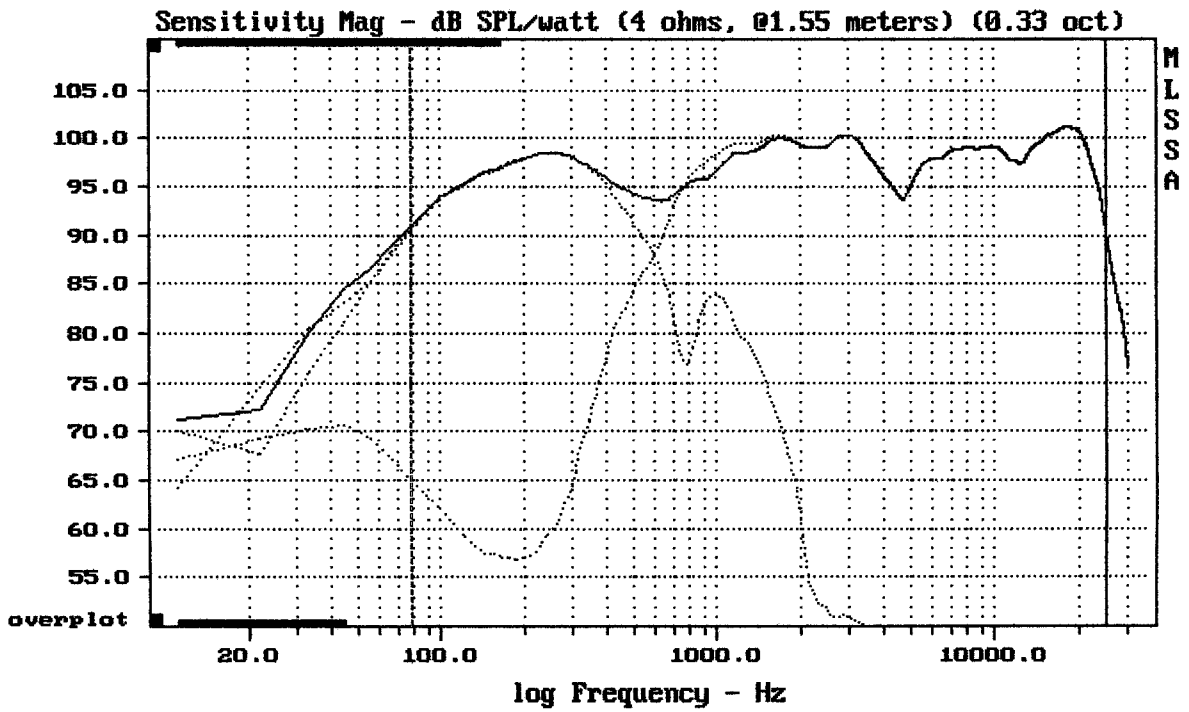


SBX220

MLSSA: Frequency Domain



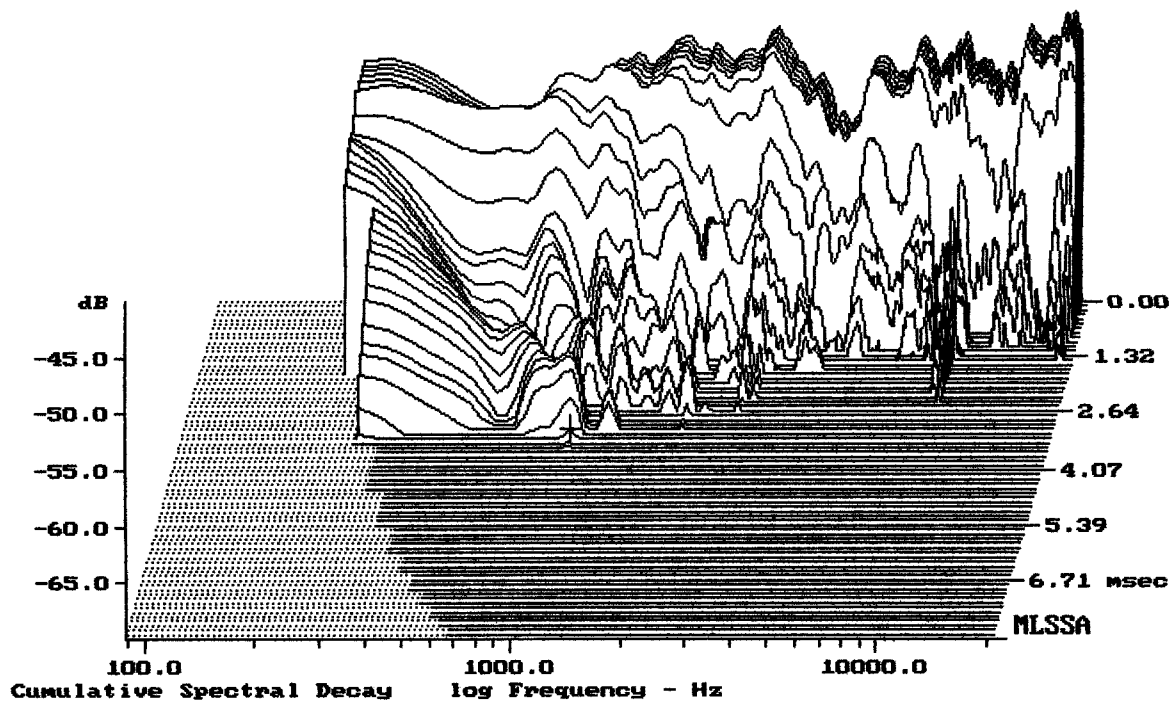
SBX220



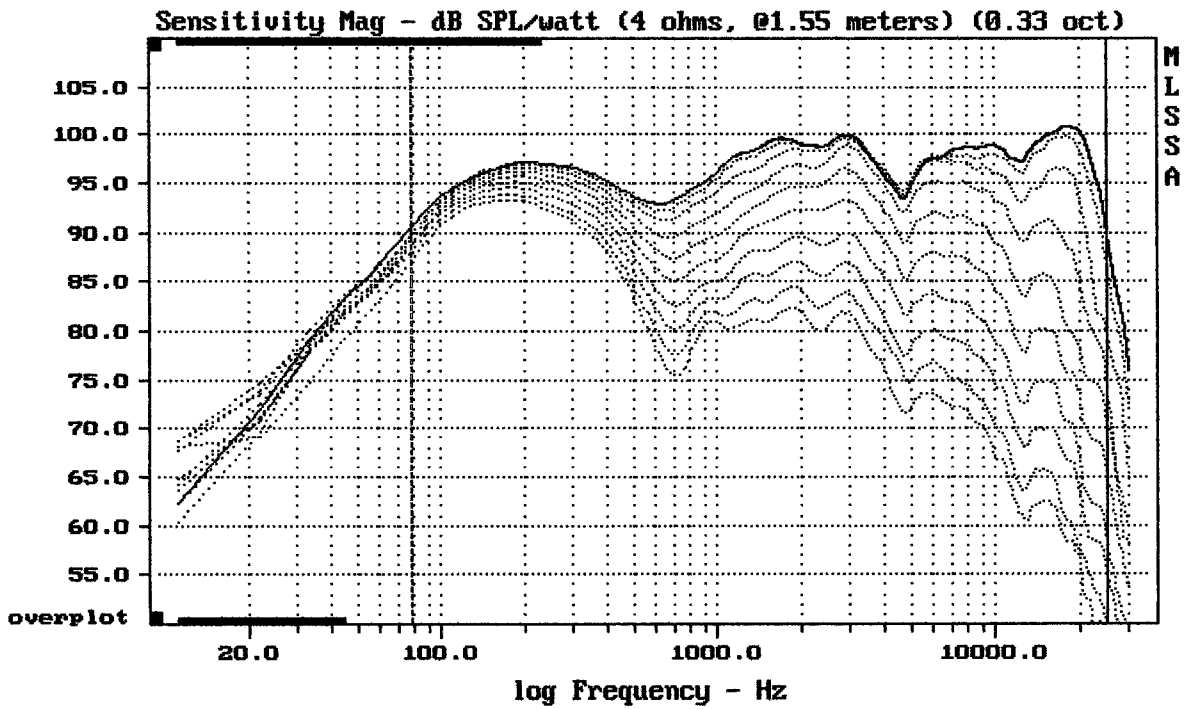
Level (78:25002 Hz) = 97.74 dB SPL/watt (4 ohms, @1.55 meters) (0.33 oct)

SBX220 + BMS4590P + C8045

MLSSA: Frequency Domain



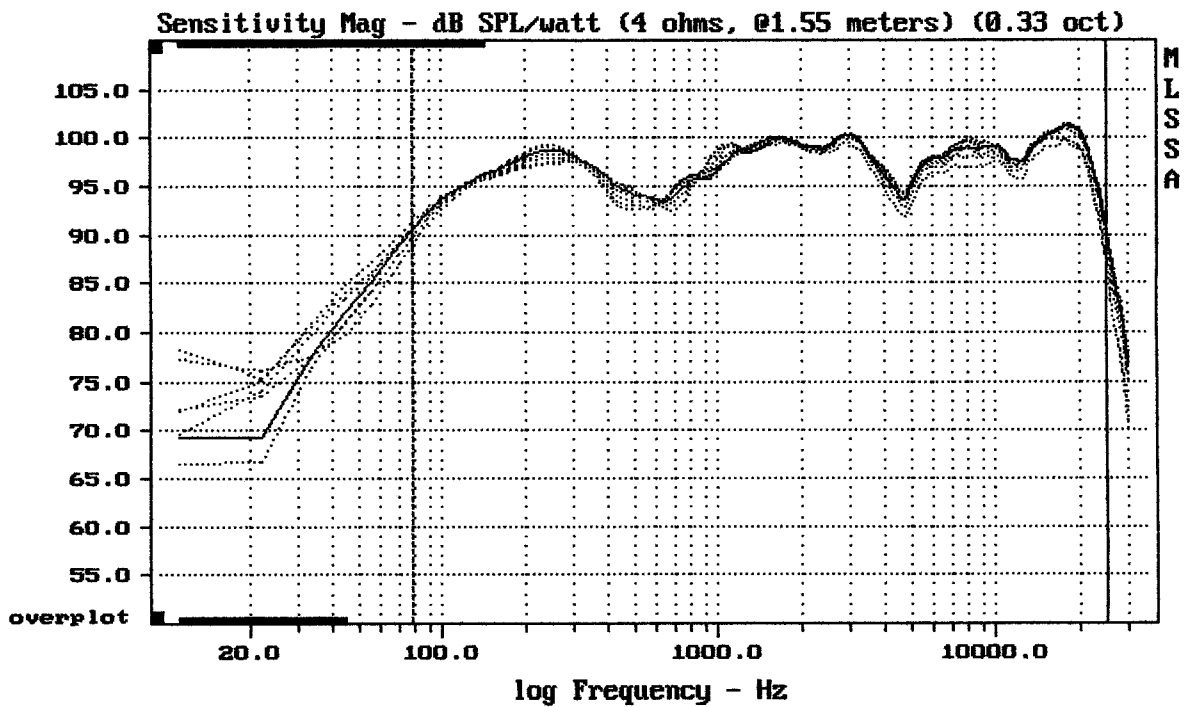
-69.08 dB, 1021 Hz (23), 3.300 msec (31)



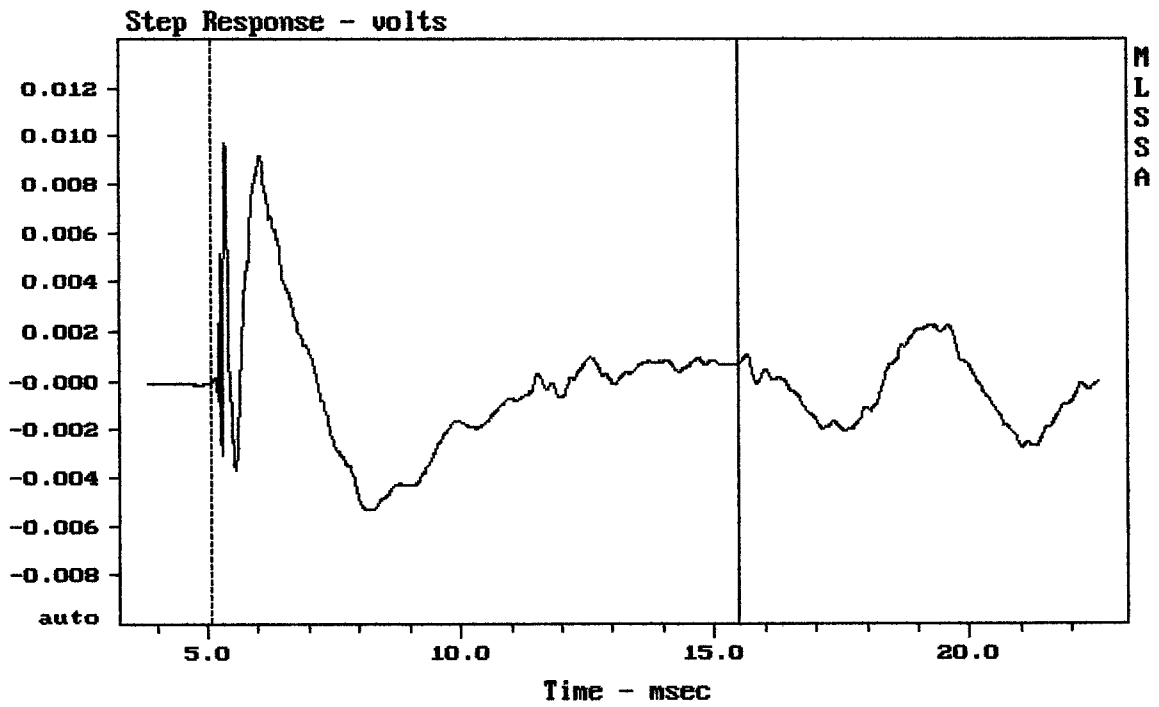
Overlay Compare: dev= +30/-11, std= 9.7, avg= -33

SBX220 + BMS4590P + C8045

MLSSA: Frequency Domain



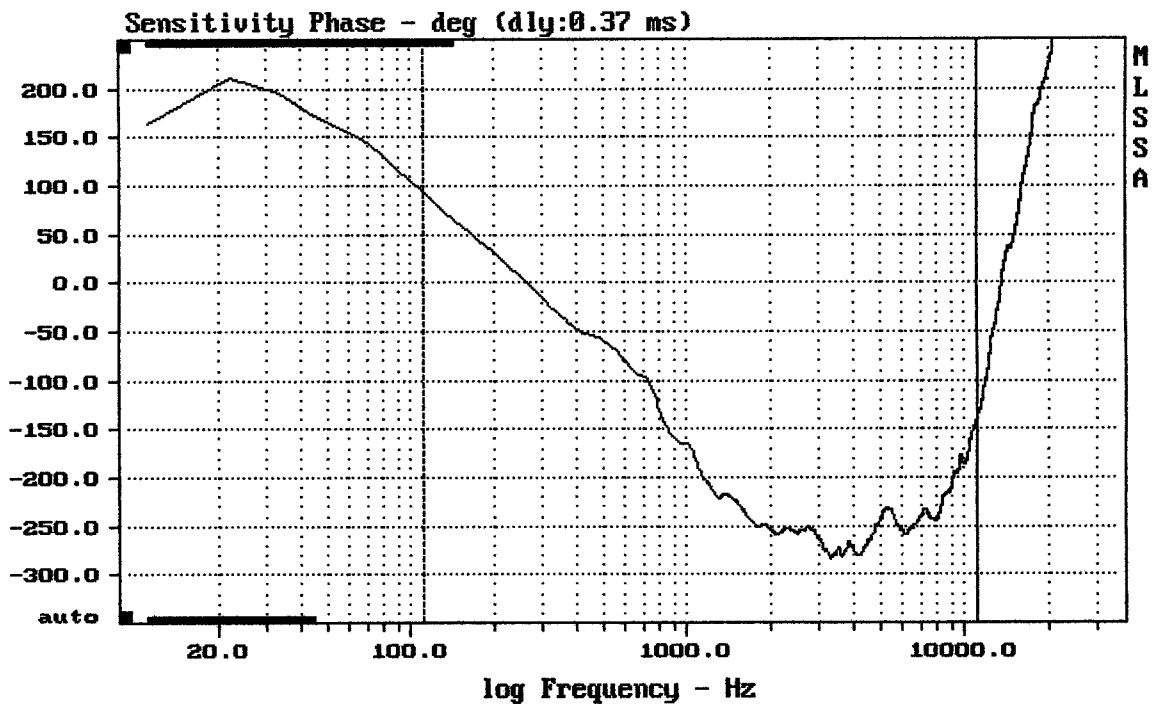
mean: 98.22, rms: 98.46, std: 1.84, max: 100.81, min: 89.59



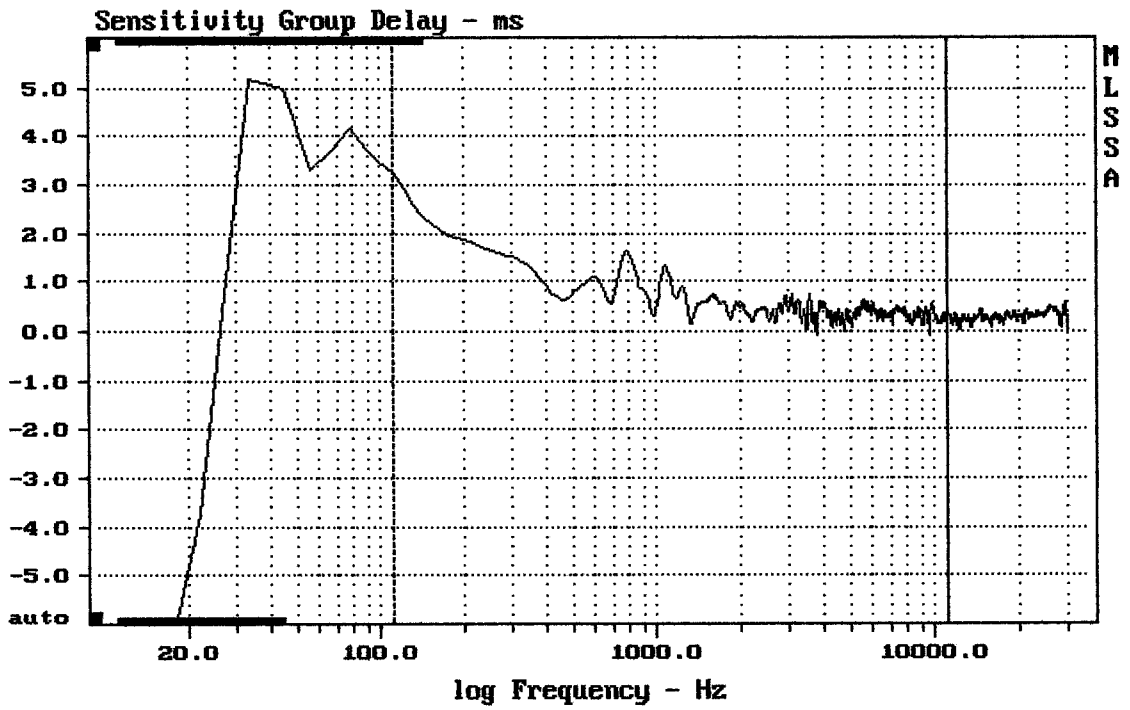
mean: -0.0002866, rms: 0.002958, std: 0.002944, max: 0.009744, min: -0.005359

SBX220 + BMS4590P + C8045

MLSSA: Time Domain



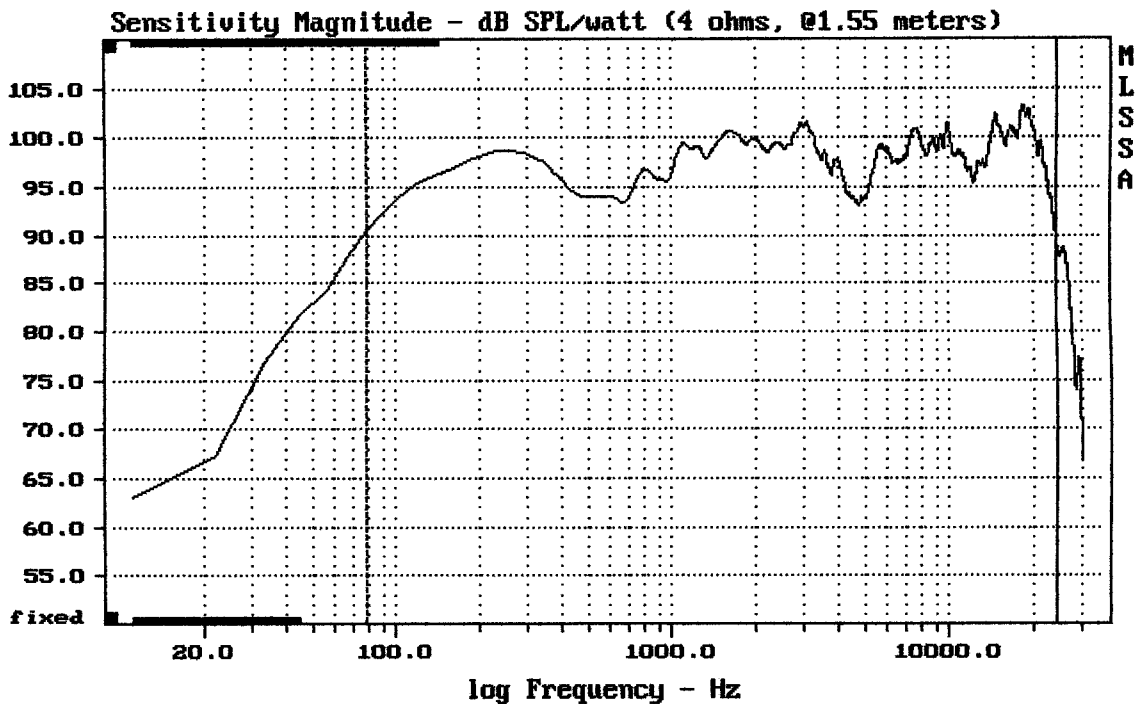
mean: -217.8, rms: 225.9, std: 59.71, max: 93.65, min: -283



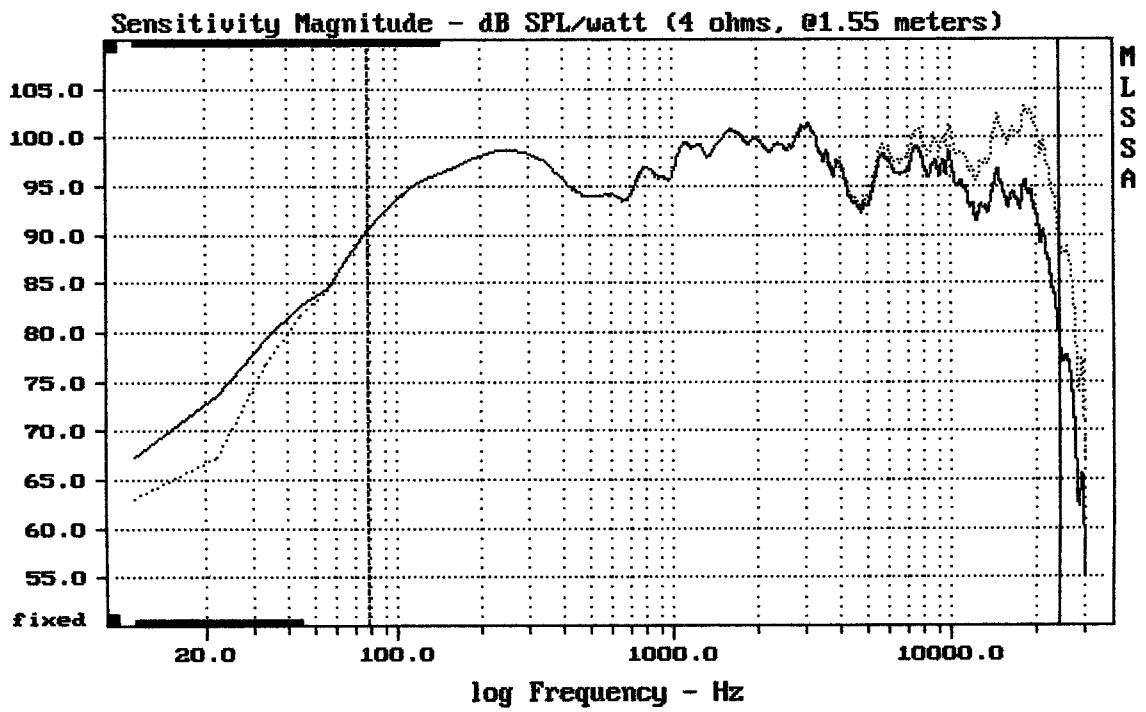
mean: 0.4267, rms: 0.5359, std: 0.3243, max: 3.255, min: -0.07635

SBX220 + BMS4590P + C8045

MLSSA: Frequency Domain



mean: 98.86, rms: 99.19, std: 2.14, max: 103.22, min: 89.12



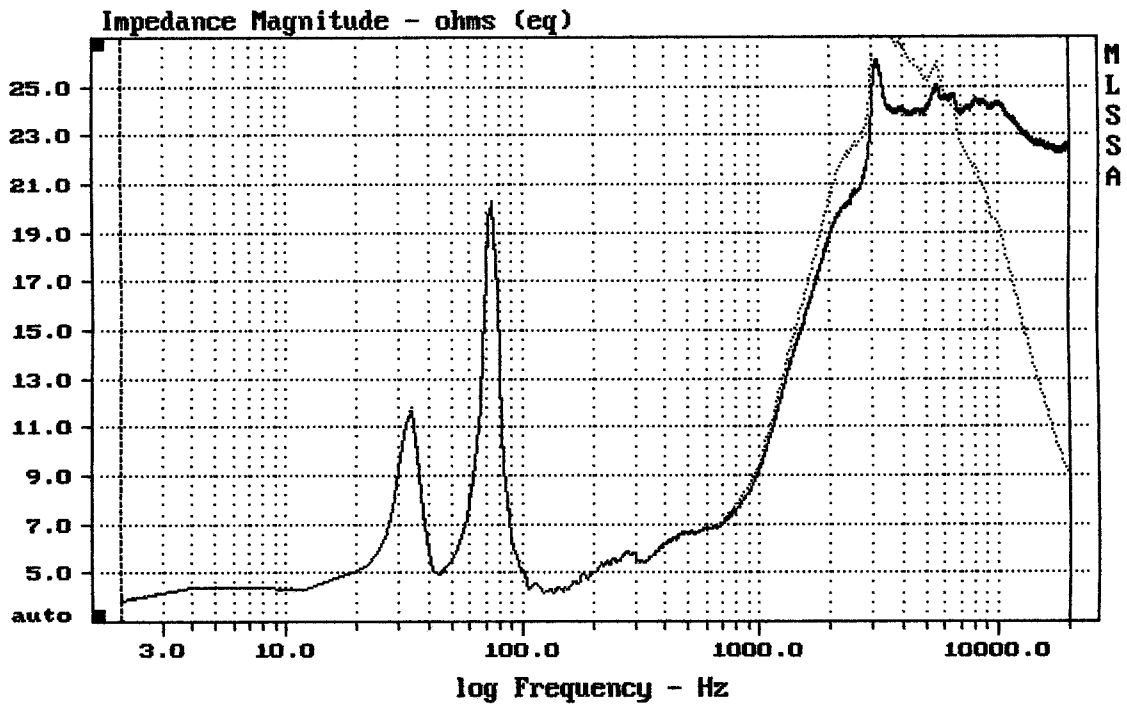

---

Overlay Compare: dev= +4.7/-5.9, std= 3.4, avg= -4.4

---

SBX220 + BMS4590P + C8045

MLSSA: Frequency Domain




---

mean: 17.2, rms: 18.26, std: 6.128, max: 29.33, min: 3.908

---