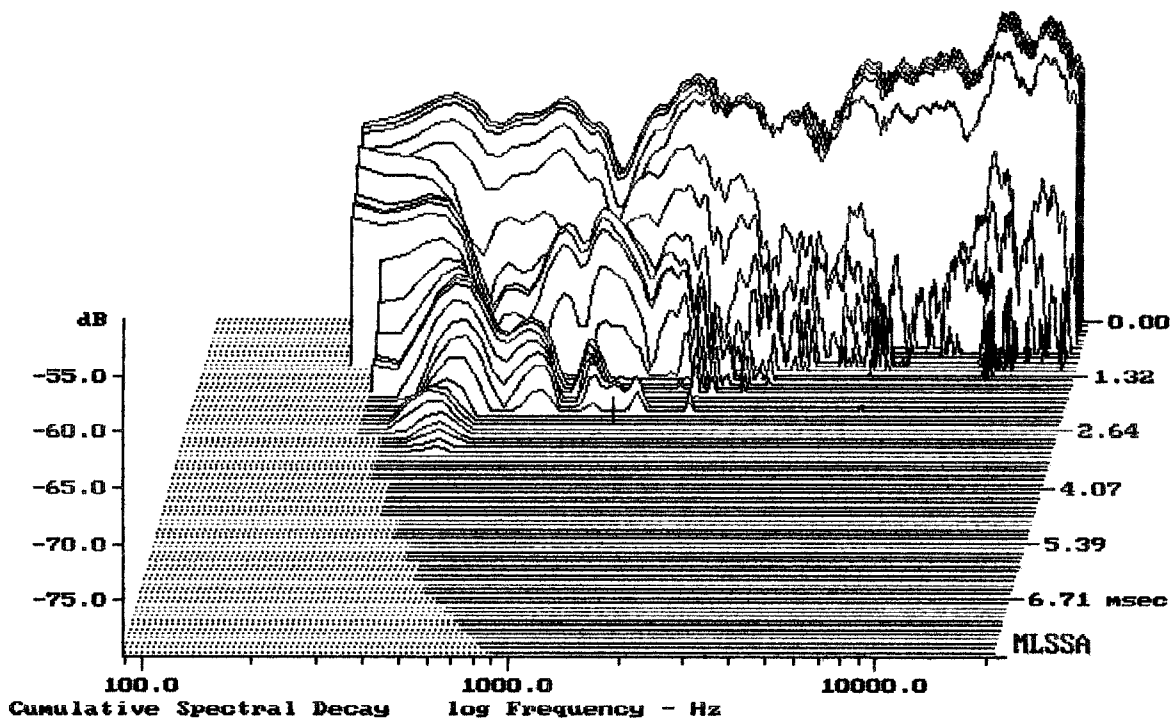


Level (70:25002 Hz) = 91.34 dB SPL/watt (8 ohms, @1.70 meters)

EV ZX1i-90

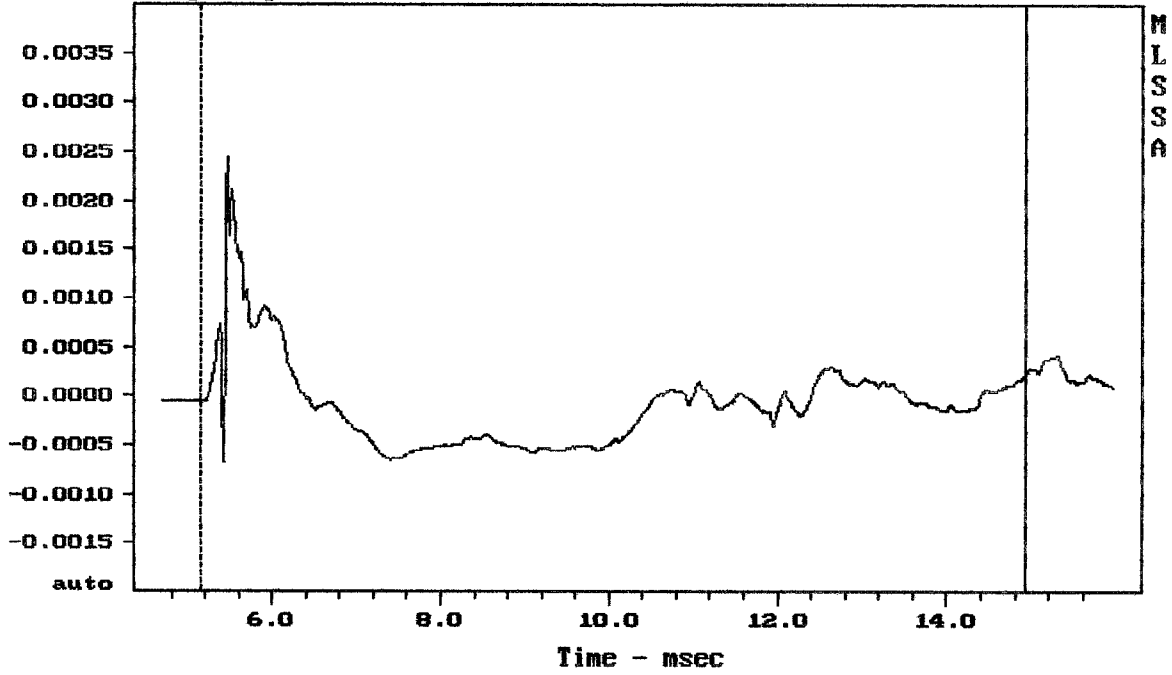
MLSSA: Frequency Domain



-79.92 dB, 1243 Hz (28), 2.200 msec (21)

DTTO

Step Response - volts

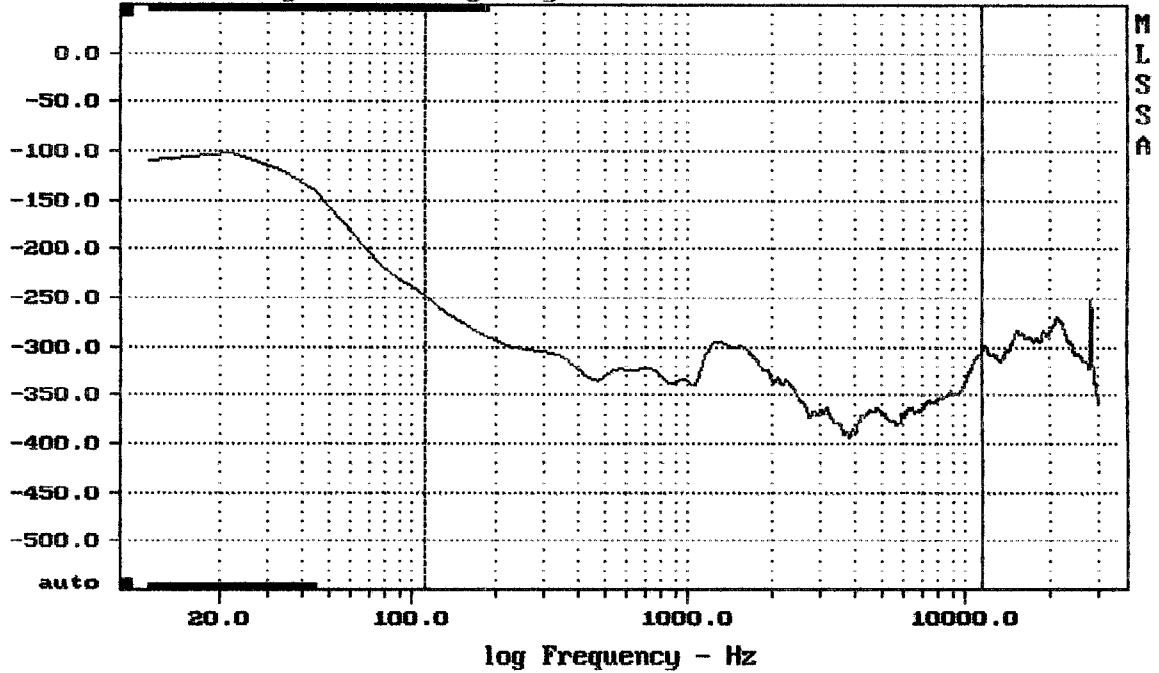


mean: $-9.621e-005$, rms: 0.0004517, std: 0.0004413, max: 0.002447, min: -0.0006

EU ZX1i-90

MLSSA: Time Domain

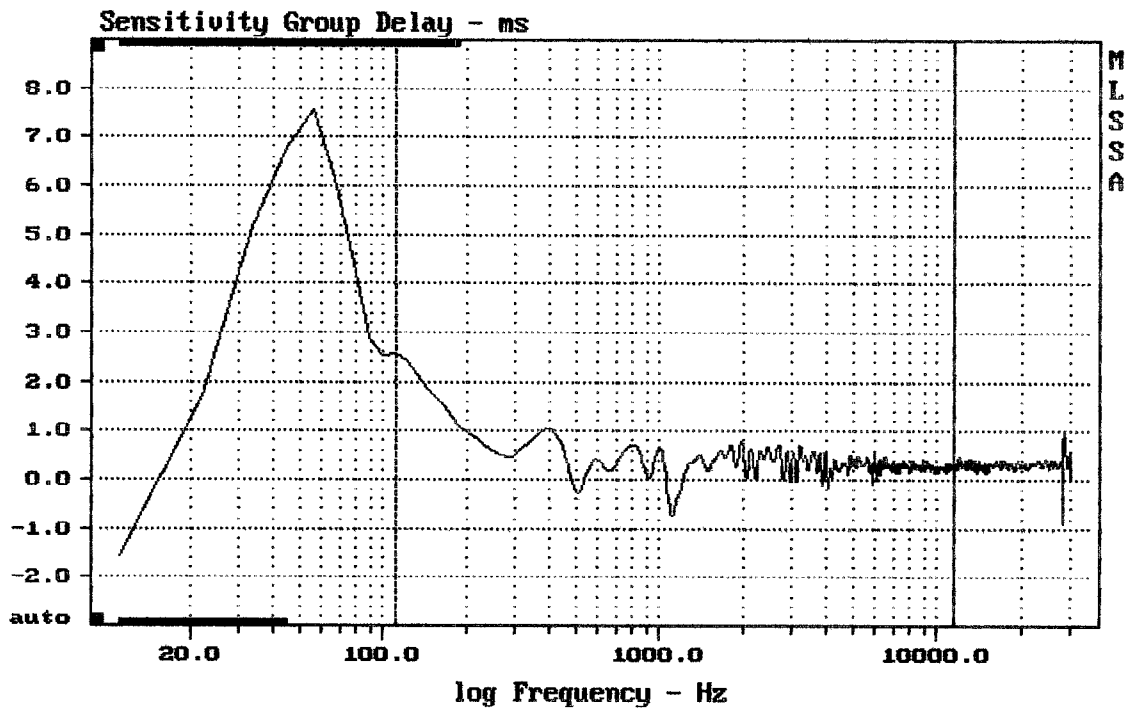
Sensitivity Phase - deg (dly:0.31 ms)



mean: -348.6, rms: 349.5, std: 25.03, max: -248.2, min: -393.5

EU ZX1i-90

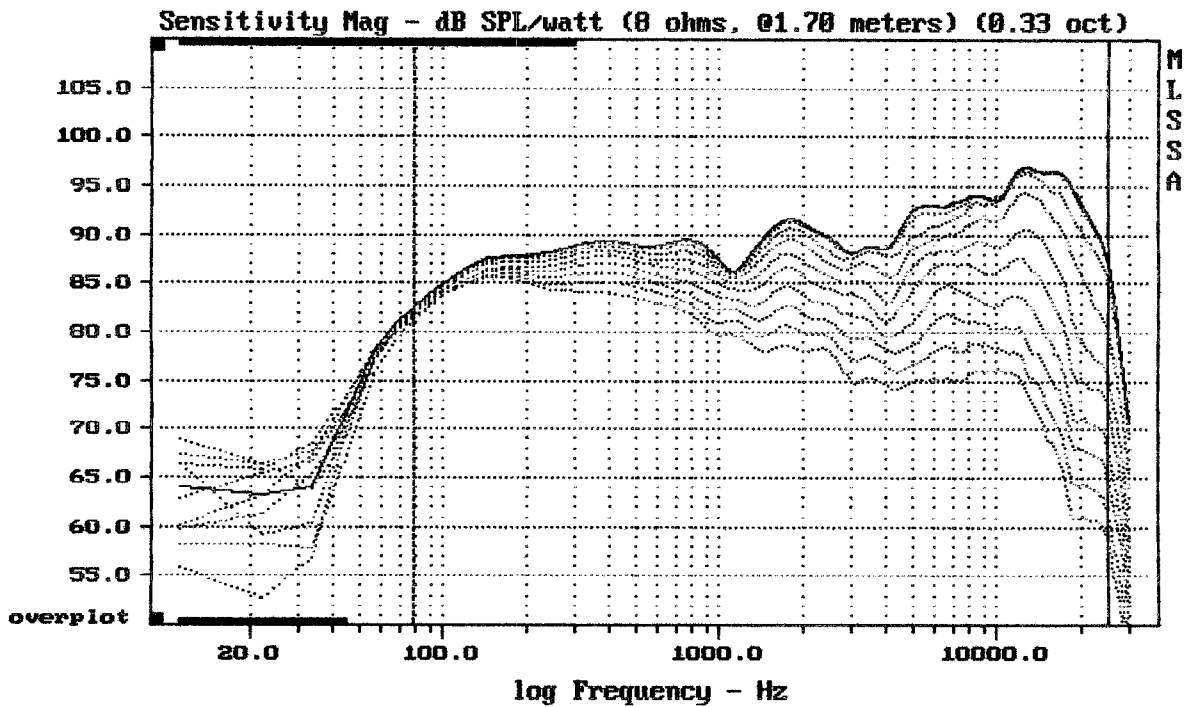
MLSSA: Frequency Domain



mean: 0.3292, rms: 0.4026, std: 0.2318, max: 2.552, min: -0.7429

EU ZX1i-90

MLSSA: Frequency Domain

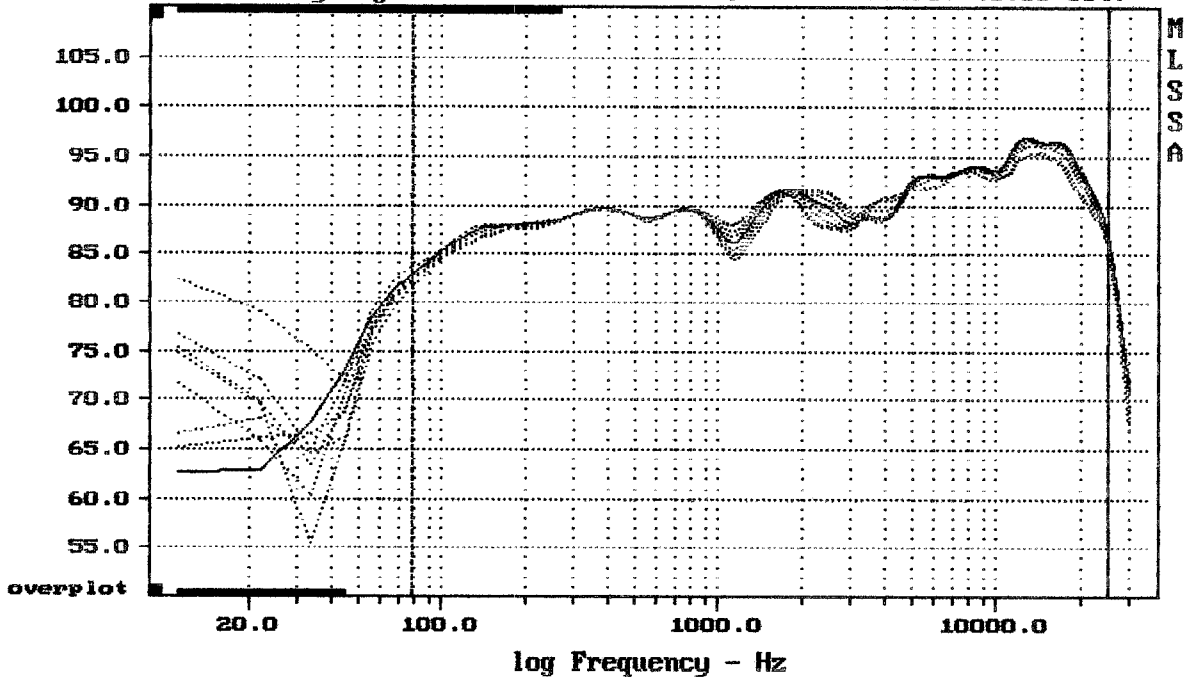


Overlay Compare: dev= +22/-11, std= 7.6, avg= -23

EU ZX1i-90

MLSSA: Frequency Domain

Sensitivity Mag - dB SPL/watt (8 ohms, @1.70 meters) (0.33 oct)

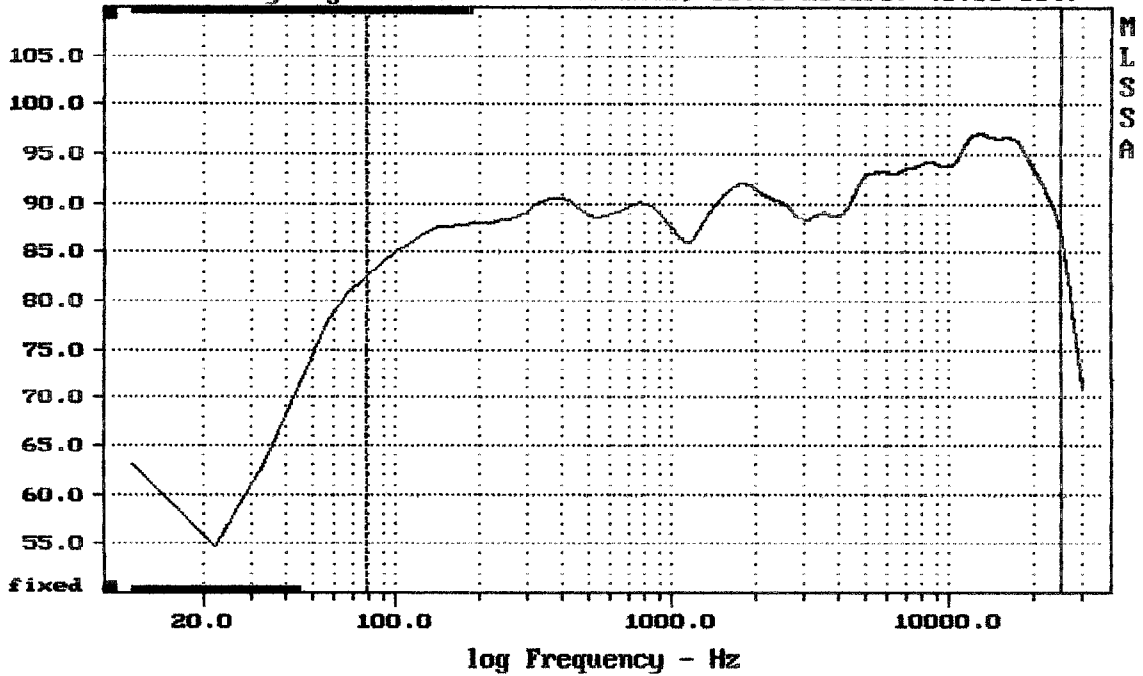


mean: 93.17, rms: 93.54, std: 2.26, max: 96.26, min: 81.51

EU ZX1i-90

MLSSA: Frequency Domain

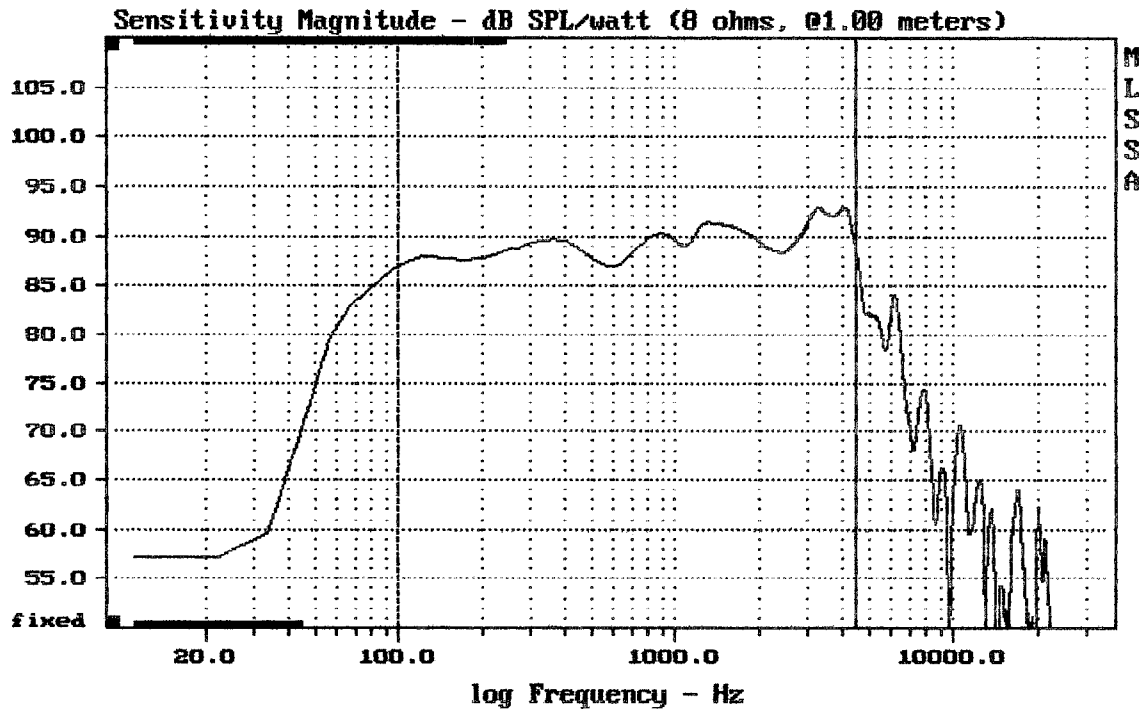
Sensitivity Mag - dB SPL/watt (8 ohms, @1.70 meters) (0.33 oct)



Level (78:25002 Hz) = 91.40 dB SPL/watt (8 ohms, @1.70 meters) (0.33 oct)

EU ZX1i-90

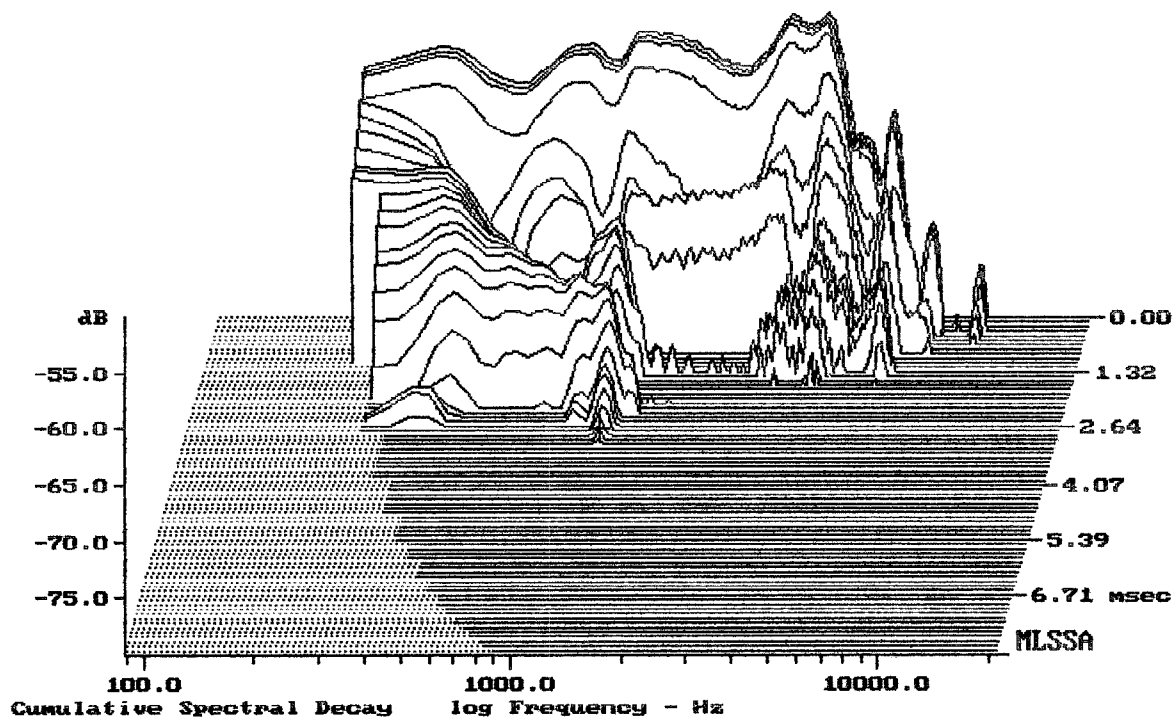
MLSSA: Frequency Domain



Level (100:4506 Hz) = 89.53 dB SPL/watt (8 ohms, @1.00 meters)

8" FROM EU ZX1i-90

MLSSA: Frequency Domain



-79.03 dB, 1199 Hz (27), 2.970 msec (28)

DTTO

Measured Data

QC Limits

Line	Parameter	Value	Units
1	RMSE-free	0.26	Ohms
2	Fs	48.61	Hz
3	Re	5.45	Ohms[dc]
4	Res	122.14	Ohms
5	Qms	8.42	
6	Qes	0.38	
7	Qts	0.36	
8	L1	0.83	mH
9	L2	0.90	mH
10	R2	2.46	Ohms
11	RMSE-load	0.31	Ohms
12	Vas(Sd)	30.27	liters
13	Mms	22.73	grams
14	Cms	471	$\mu\text{M}/\text{Newton}$
15	B1	10.04	Tesla-M
16	SPLref(Sd)	91.5	dB[Re]
17	Rub-index	0.00	

Method: Mass-loaded (30.00 grams)

Area (Sd): 213.82 sq cm

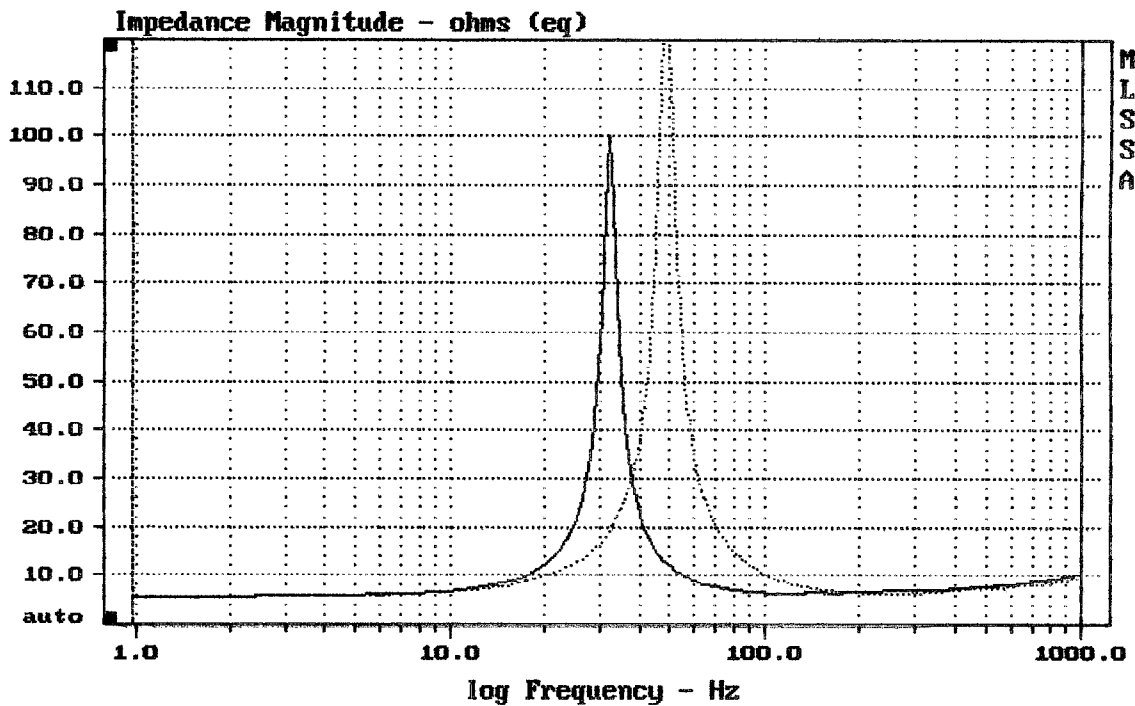
DCR mode: Measure (-0.11 ohms)

QC file: CLOSED

Analysis successful. Shift in Fs = -33.7% (-20% to -50% is recommended).

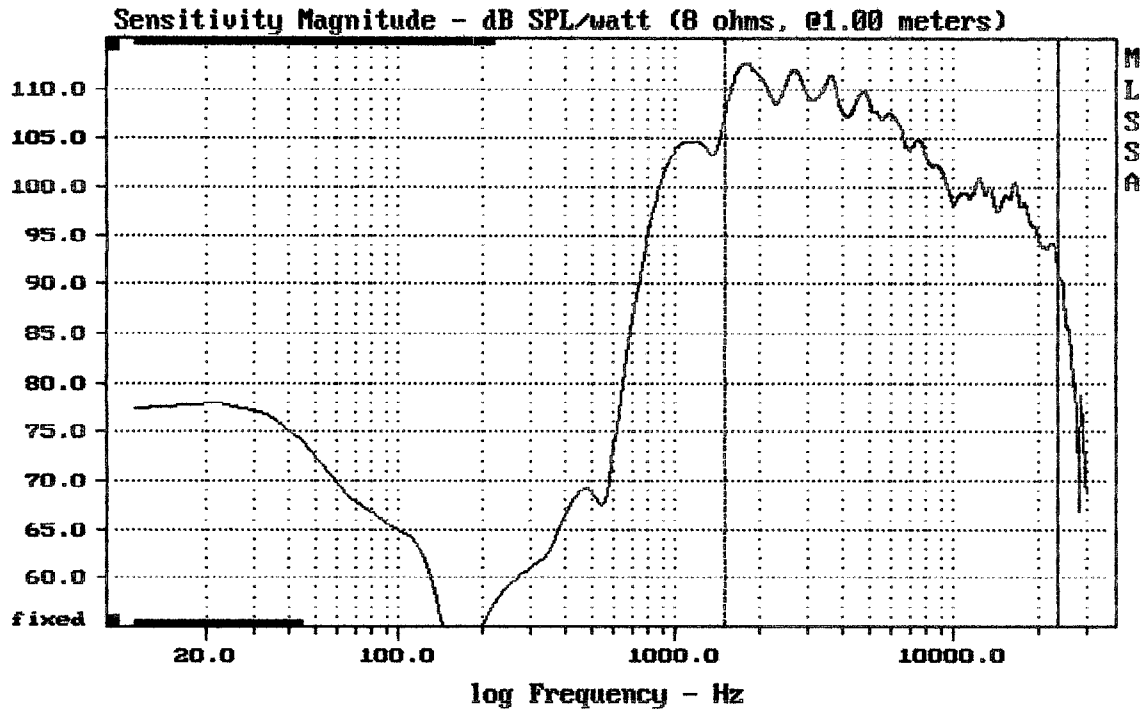
8" EMINENCE/EV F.01U.167.614 FROM ZX1i-90

MLSSA: Parameters



mean: 9.615, rms: 14.08, std: 10.28, max: 128, min: 5.566

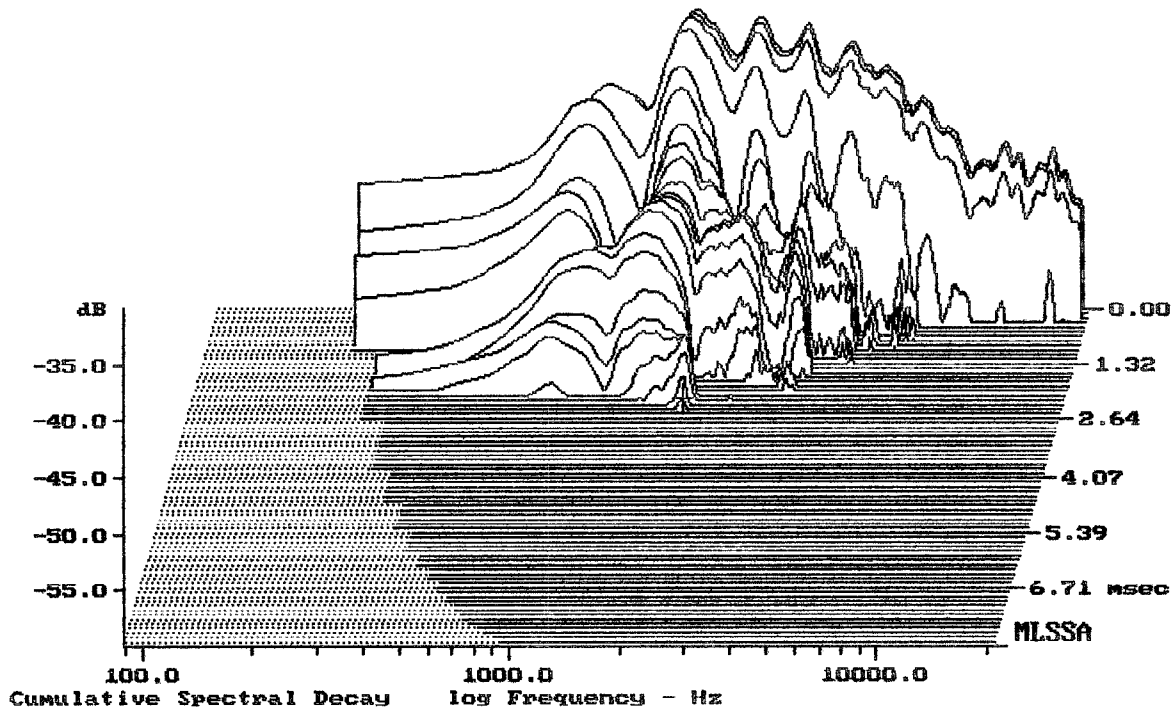
MLSSA: Frequency Domain



Level (1498:23504 Hz) = 107.57 dB SPL/watt (8 ohms, @1.00 meters)

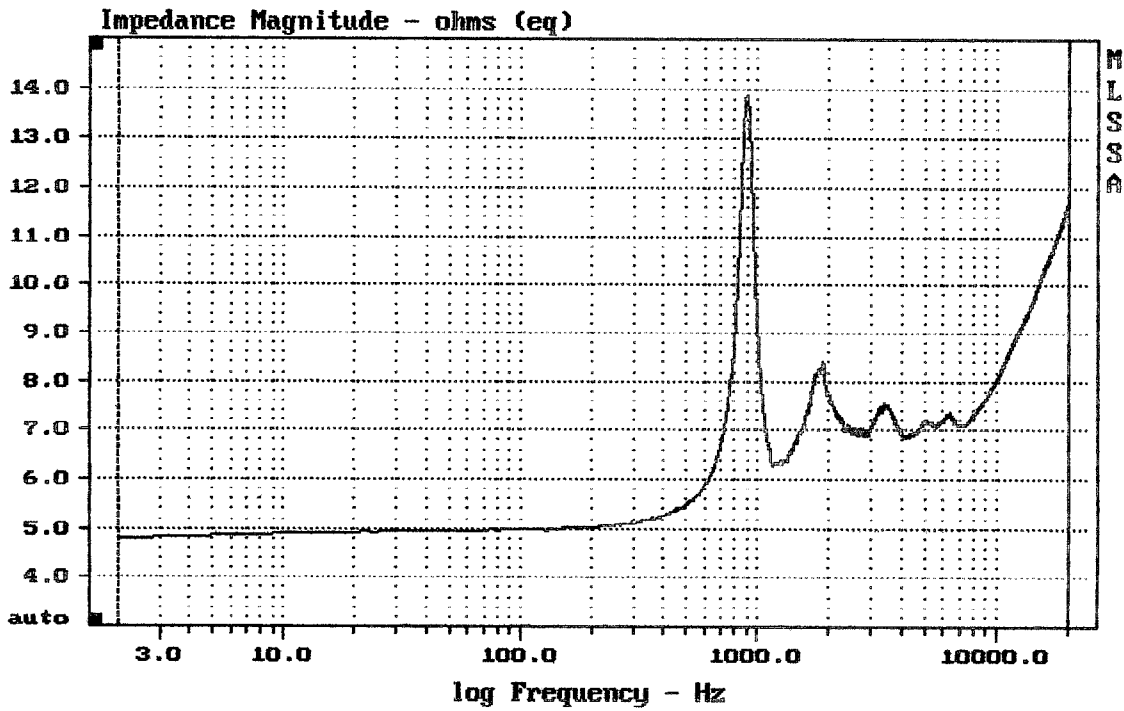
1" + HORN EU 2Xi-90

MLSSA: Frequency Domain



-59.00 dB, 1953 Hz (44), 2.420 msec (23)

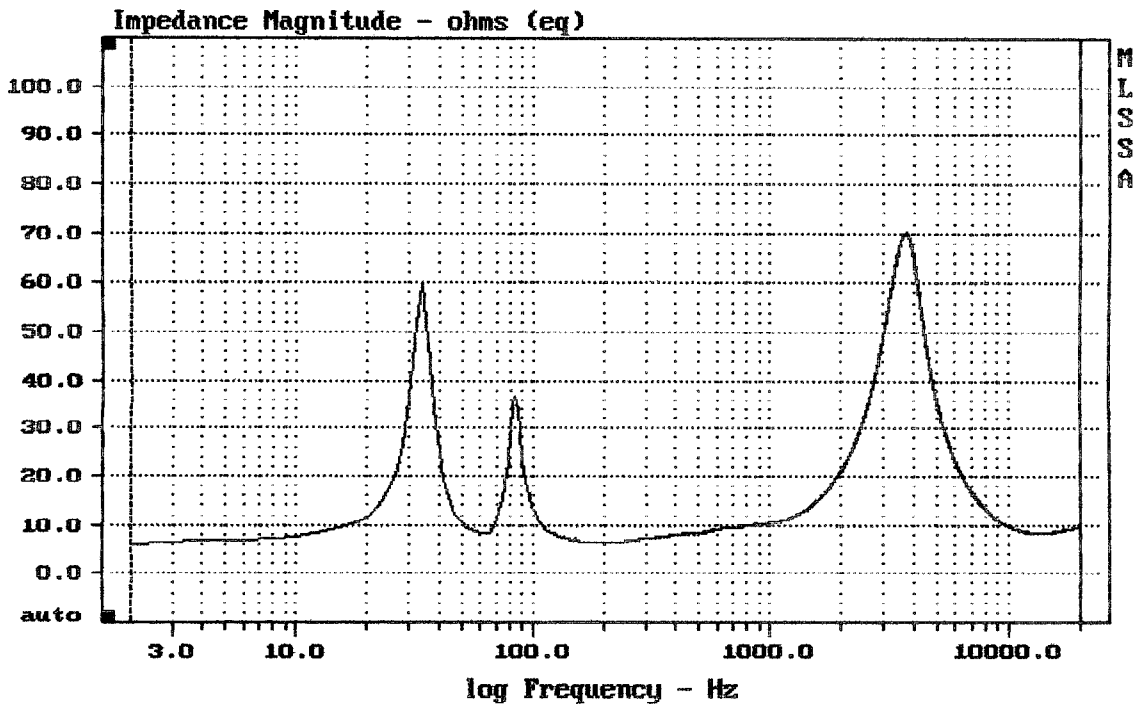
DT10



mean: 8.585, rms: 8.747, std: 1.678, max: 13.87, min: 4.777

EV ZX1i-90

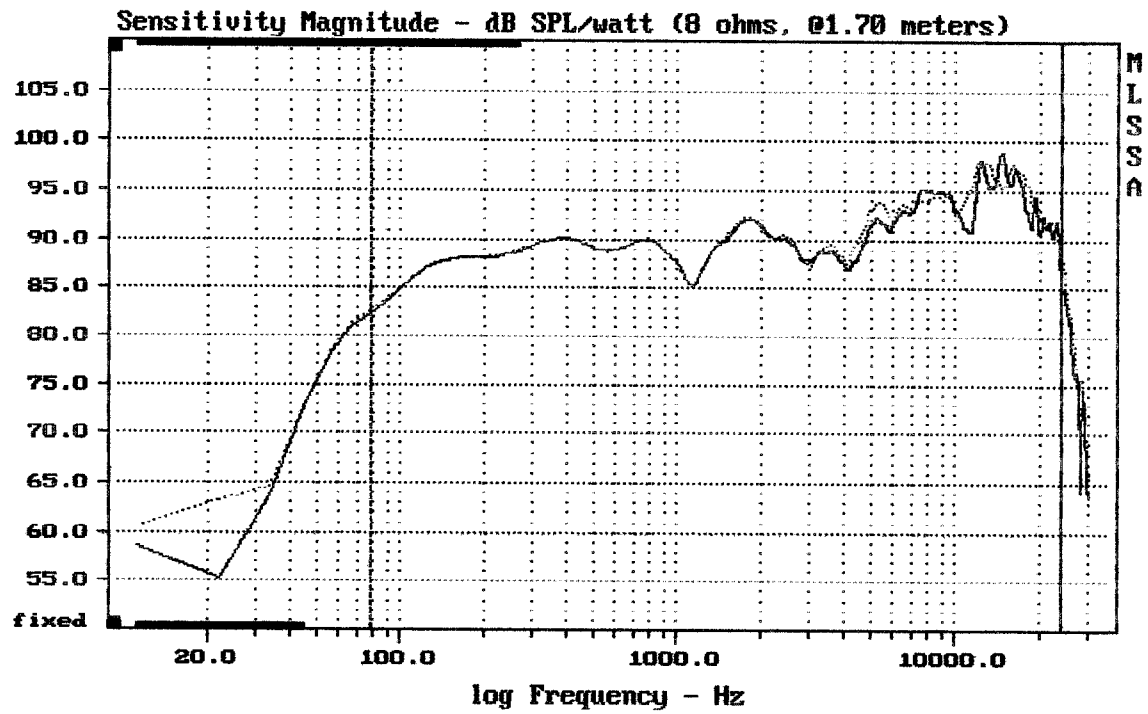
MLSSA: Frequency Domain



mean: 17.21, rms: 23.04, std: 15.32, max: 70.24, min: 6.093

EV ZX1i-90

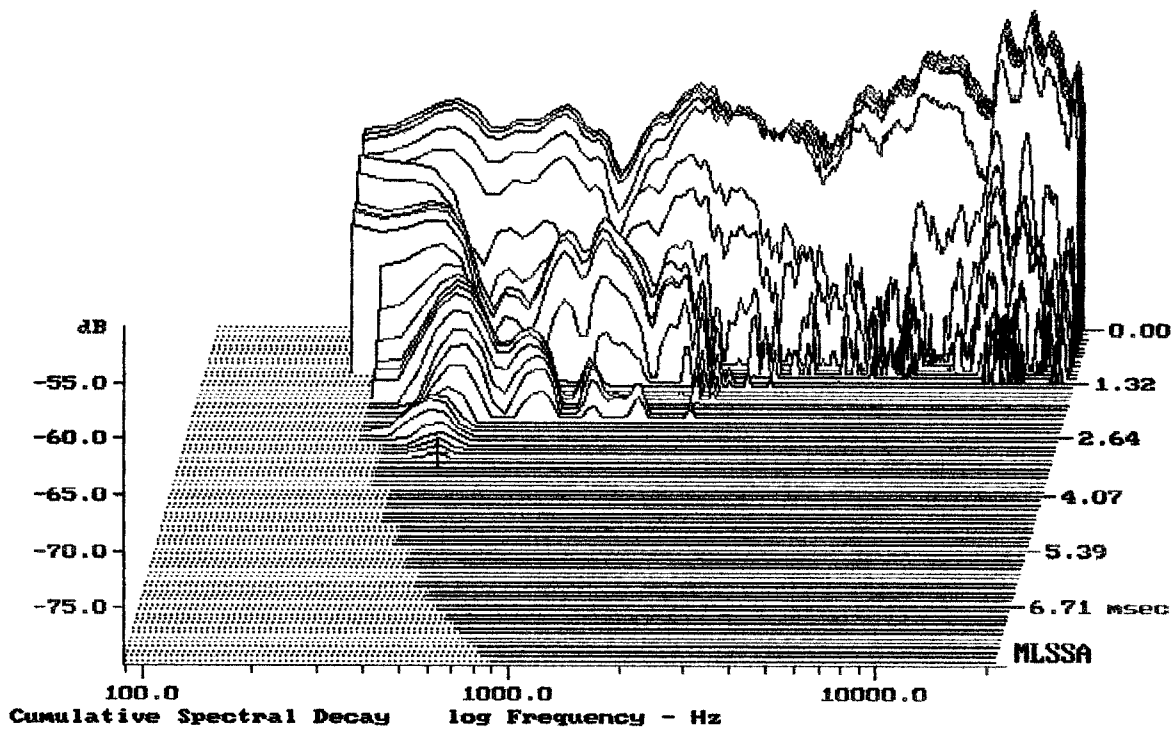
MLSSA: Frequency Domain



Overlay Compare: dev= +4.2/-3.8, std= 1.3, avg= -0.65

EV ZX11-90 GRILL —

MLSSA: Frequency Domain



-79.59 dB, 444 Hz (10), 3.190 msec (30)

DTTO