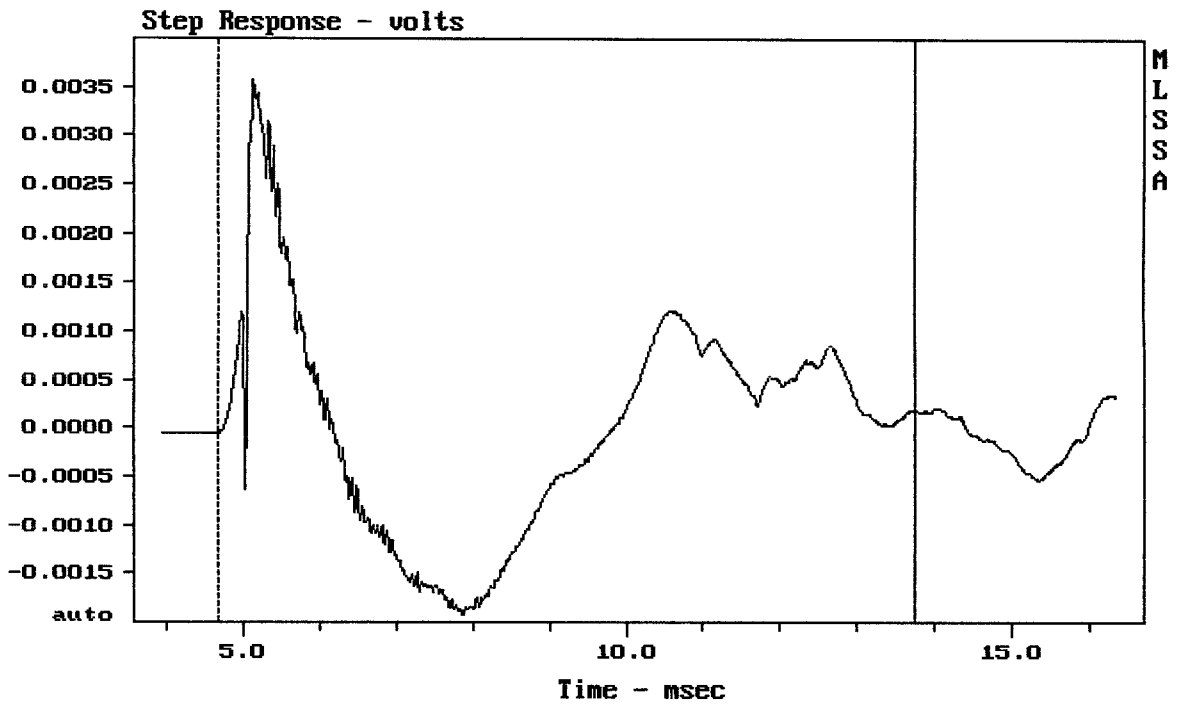


Level (78:19010 Hz) = 94.86 dB SPL/watt (8 ohms, @1.60 meters)

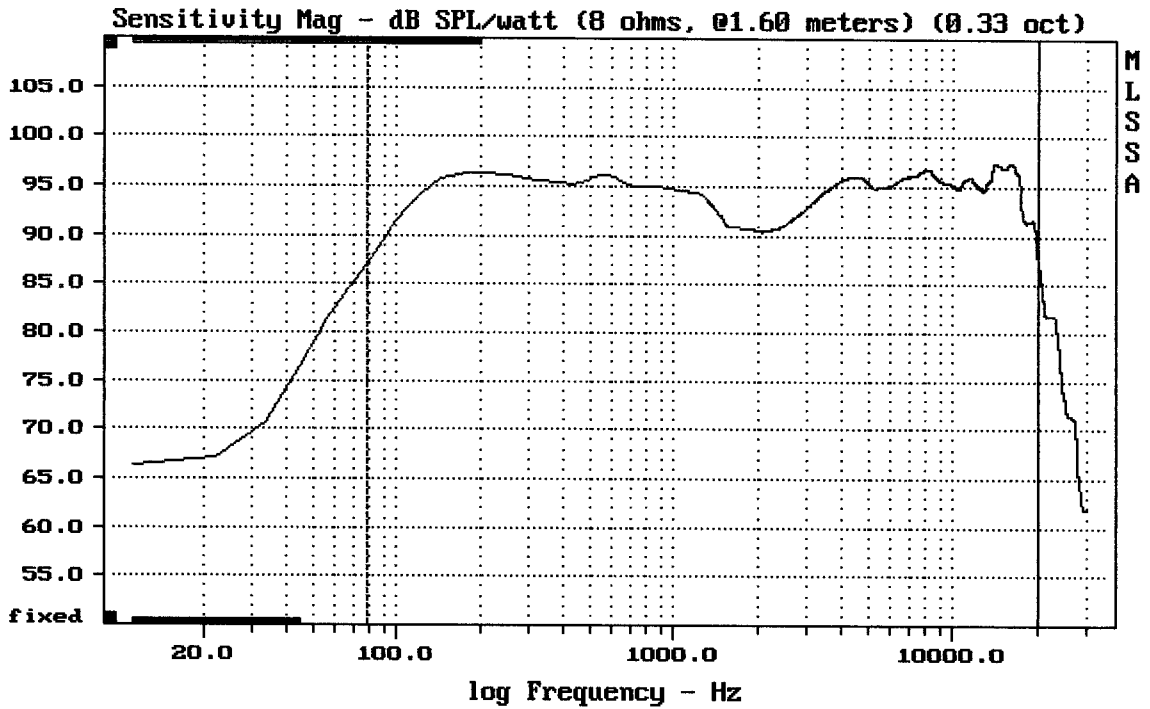
RCF TT22

MLSSA: Frequency Domain



mean: 2.1e-005, rms: 0.001131, std: 0.00113, max: 0.003579, min: -0.00192

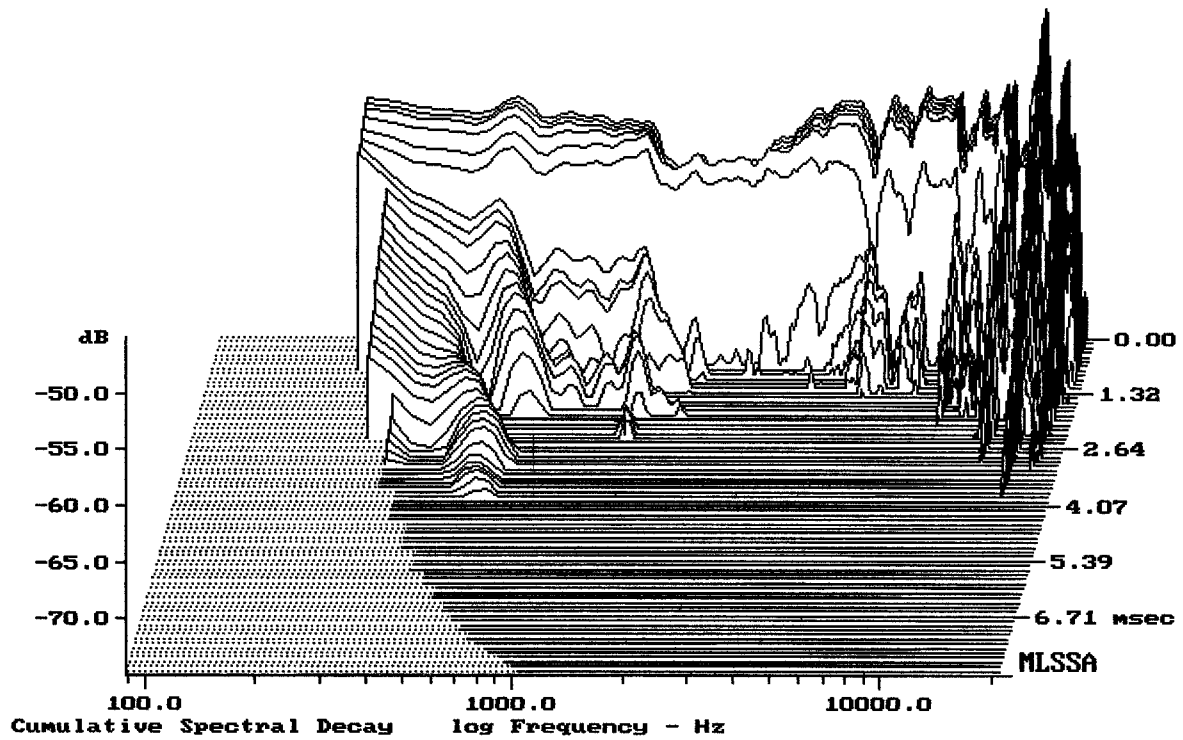
RCF TT22



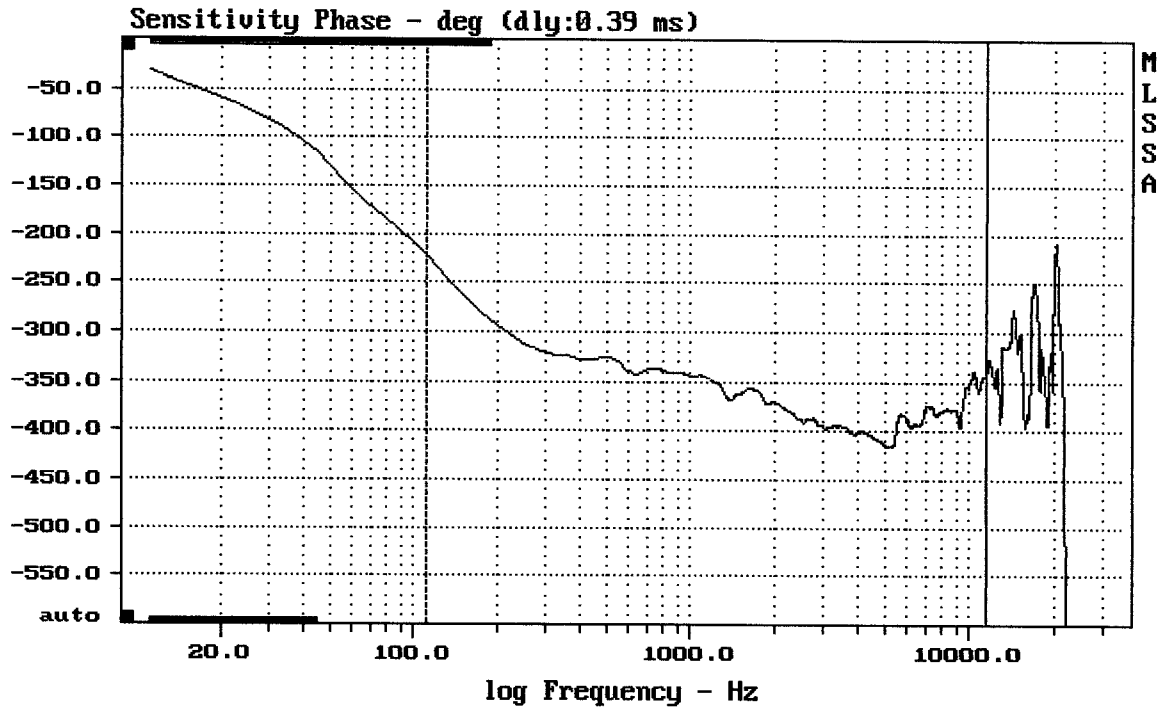
Level (78:20000 Hz) = 94.82 dB SPL/watt (8 ohms, @1.60 meters) (0.33 oct)

RCF TT22

MLSSA: Frequency Domain



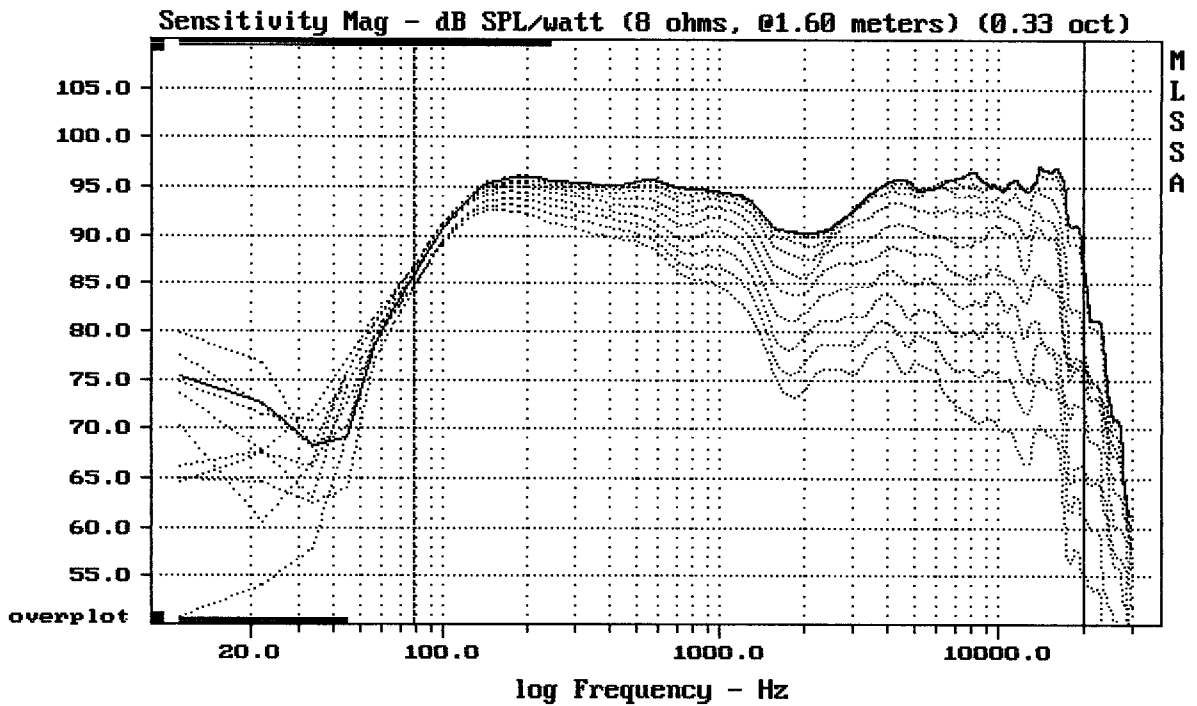
-73.56 dB, 1332 Hz (30), 2.420 msec (23)



mean: -375.4, rms: 376.2, std: 25.19, max: -222.9, min: -415.8

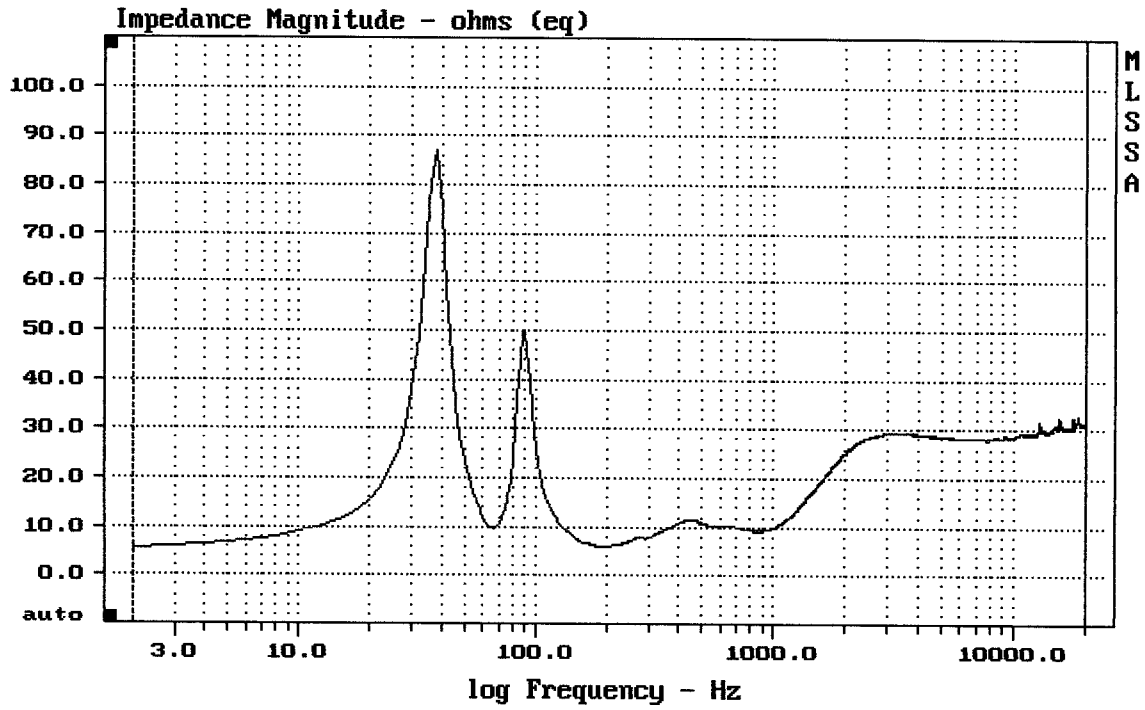
RCF TT22

MLSSA: Frequency Domain



Overlay Compare: dev= +23/-11, std= 7, avg= -24

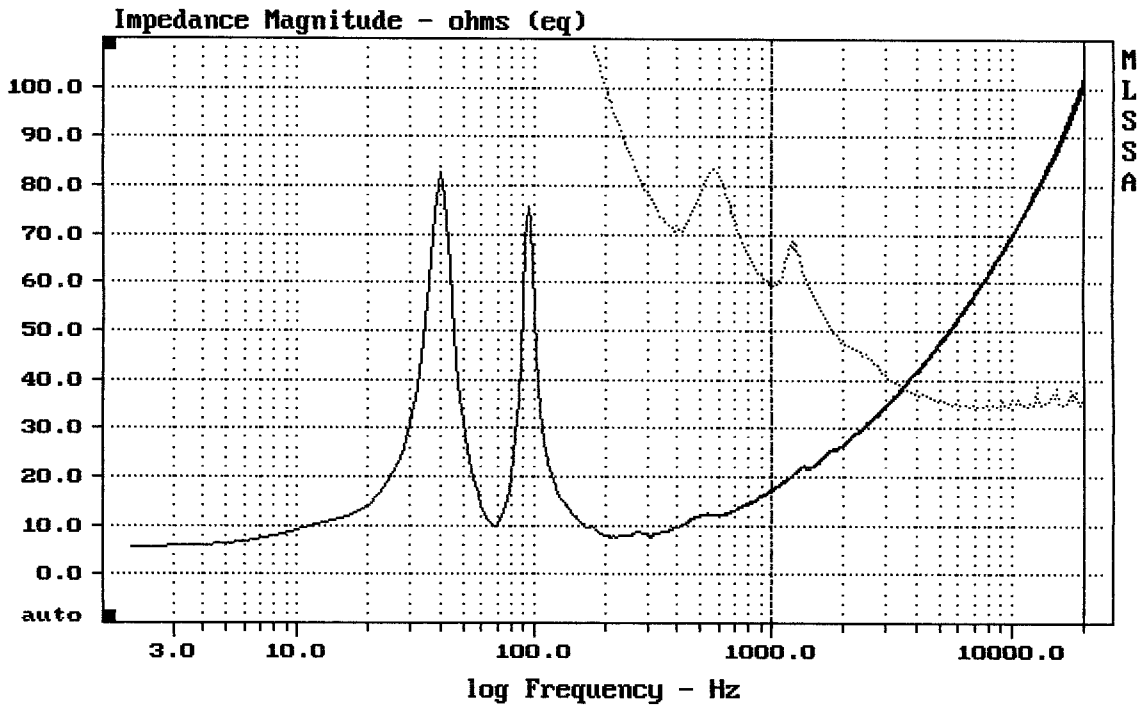
RCF TT22



mean: 27.96, rms: 28.43, std: 5.187, max: 87.14, min: 5.639

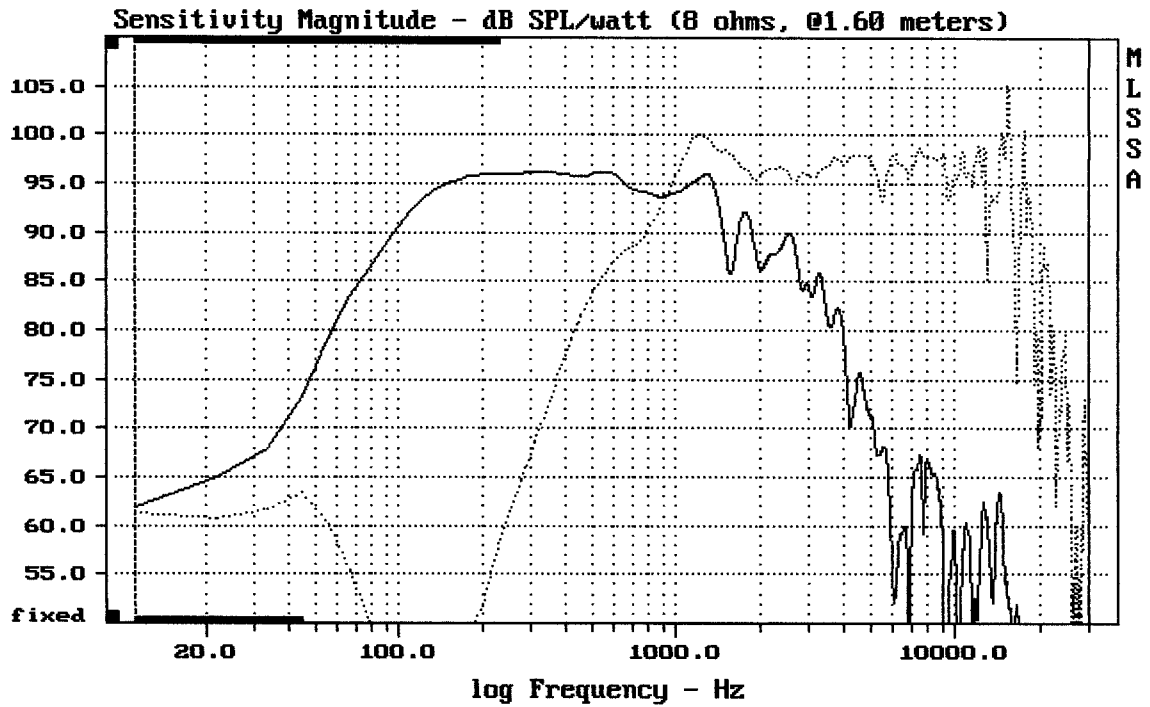
RCF TT22

MLSSA: Frequency Domain



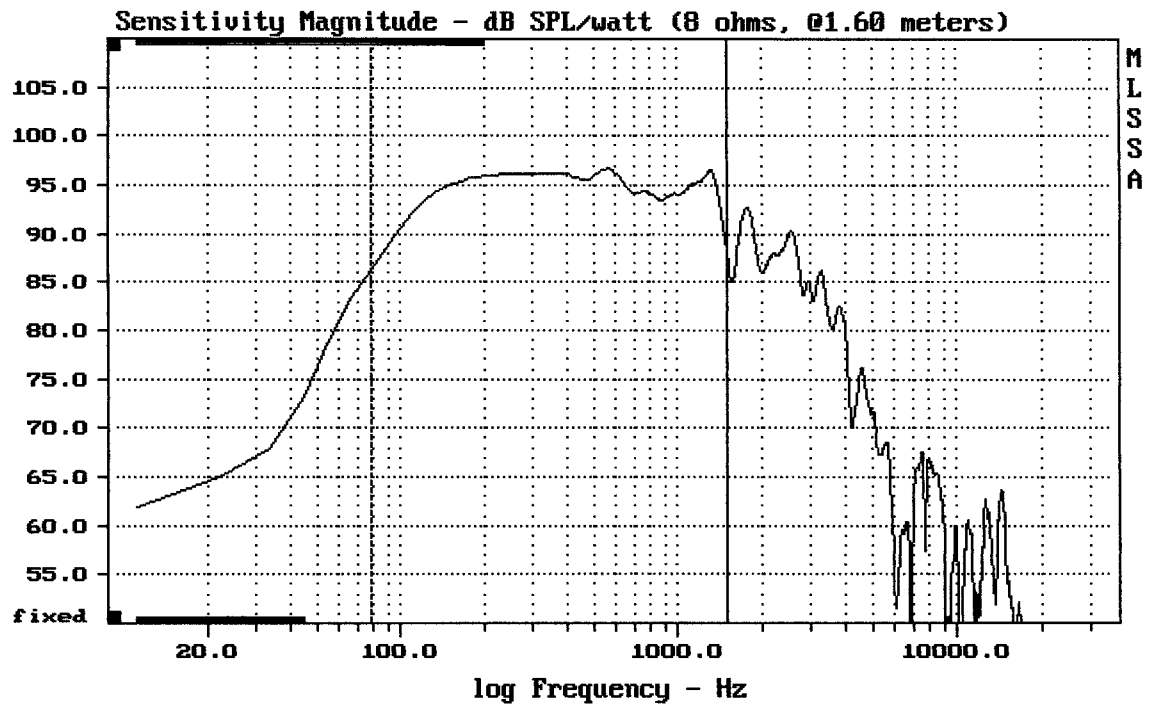
mean: 37.19, rms: 37.58, std: 5.421, max: 68.52, min: 34.24

RCF TT22

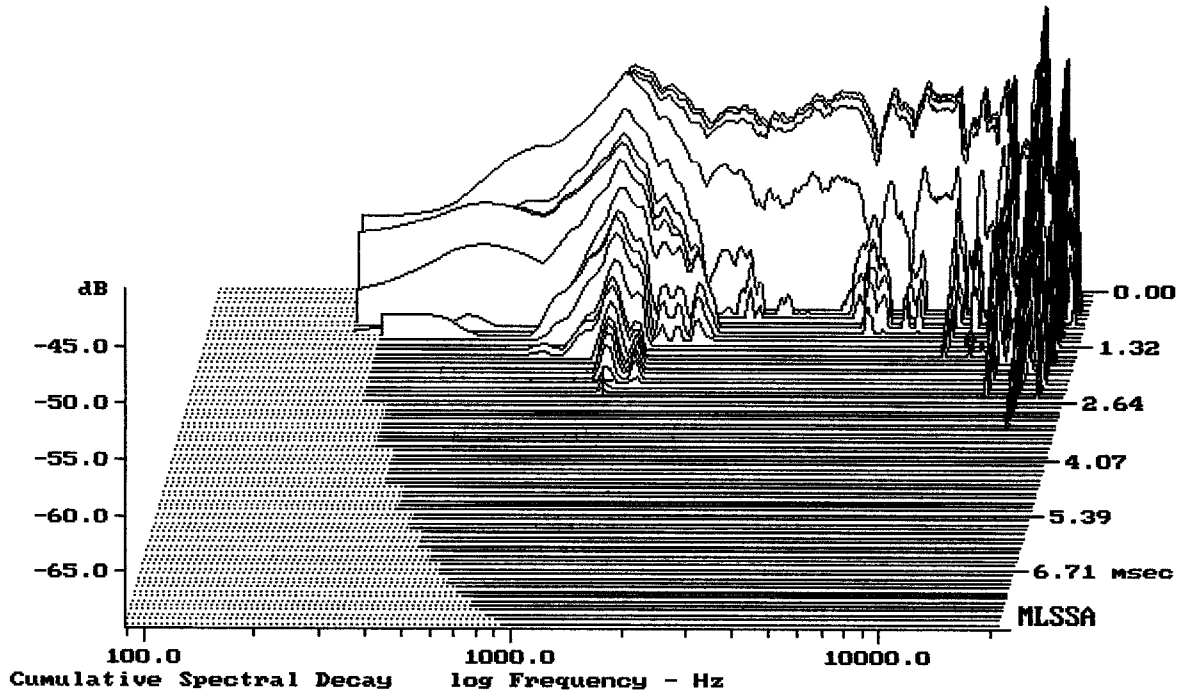


RCF TT22 BIAMP

MLSSA: Frequency Domain

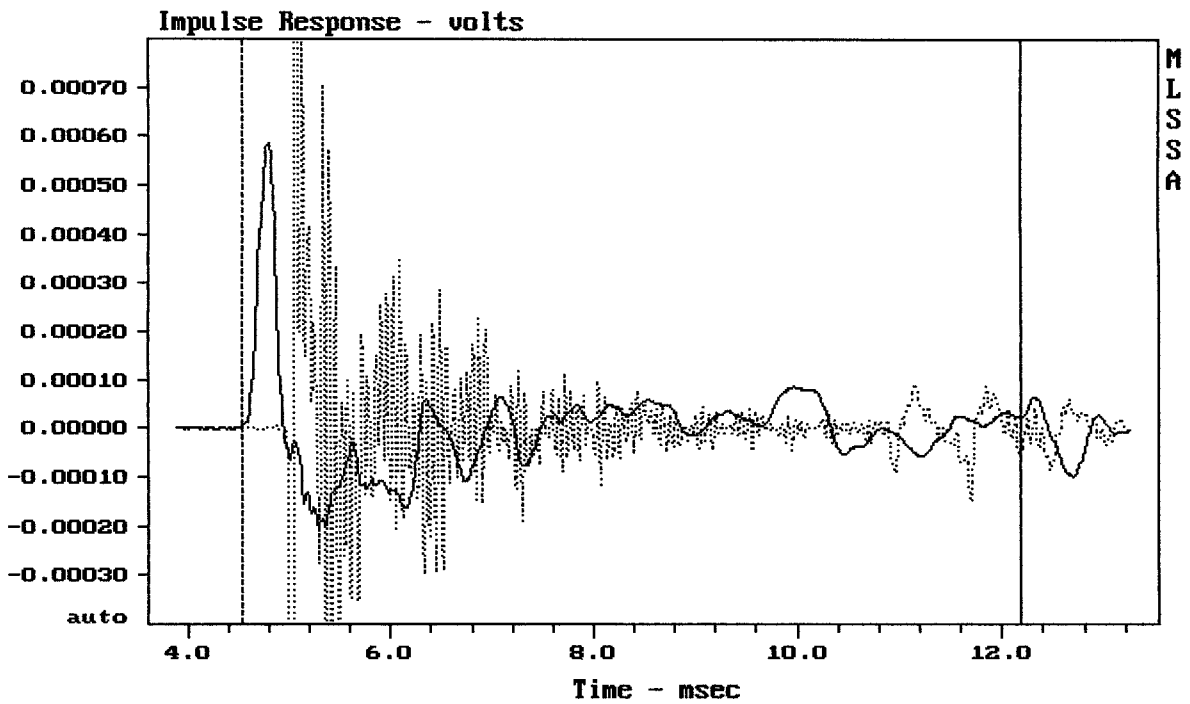


RCF TT22 BIAMP

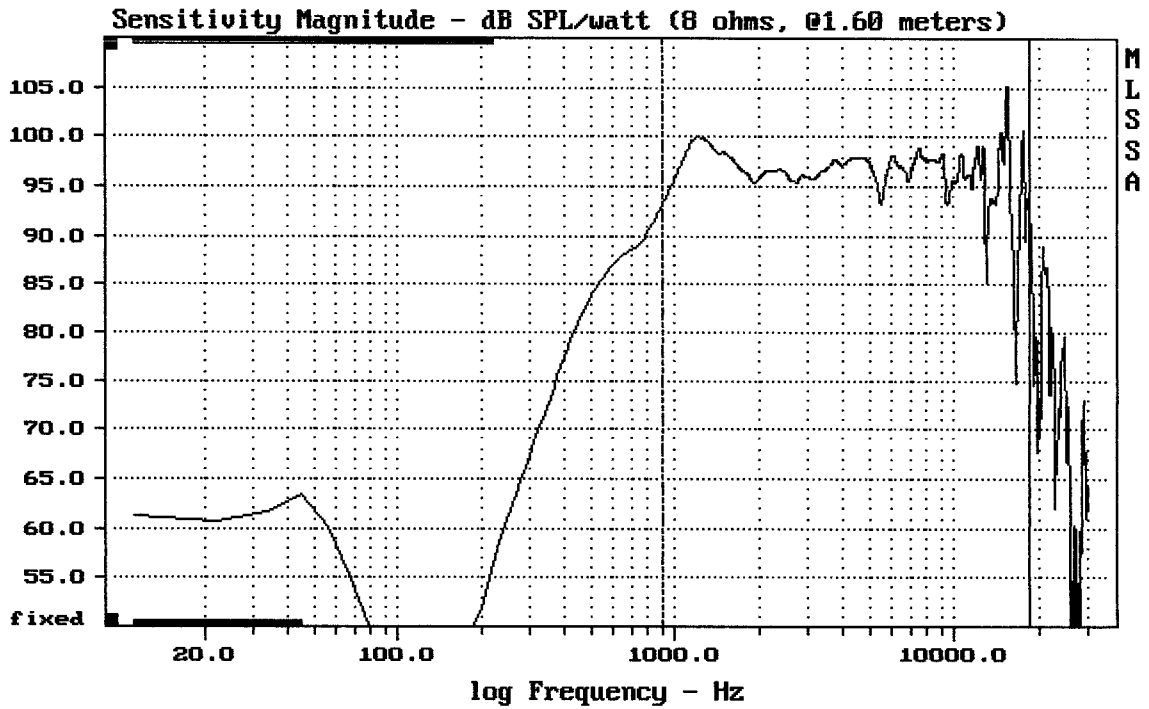


-69.41 dB, 1154 Hz (26), 2.310 msec (22)

DTTO



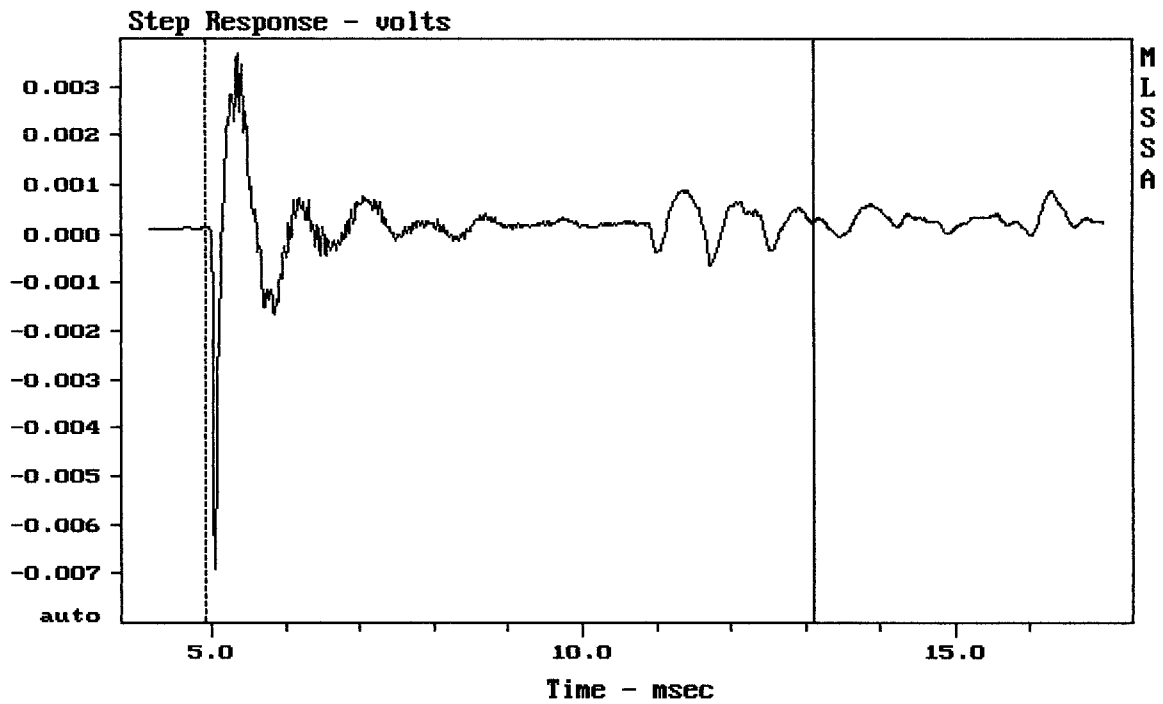
CURSOR: $dy = -7.43634e-005$ $x = 12.1880$ (1108)



Level (899:18499 Hz) = 97.15 dB SPL/watt (8 ohms, @1.60 meters)

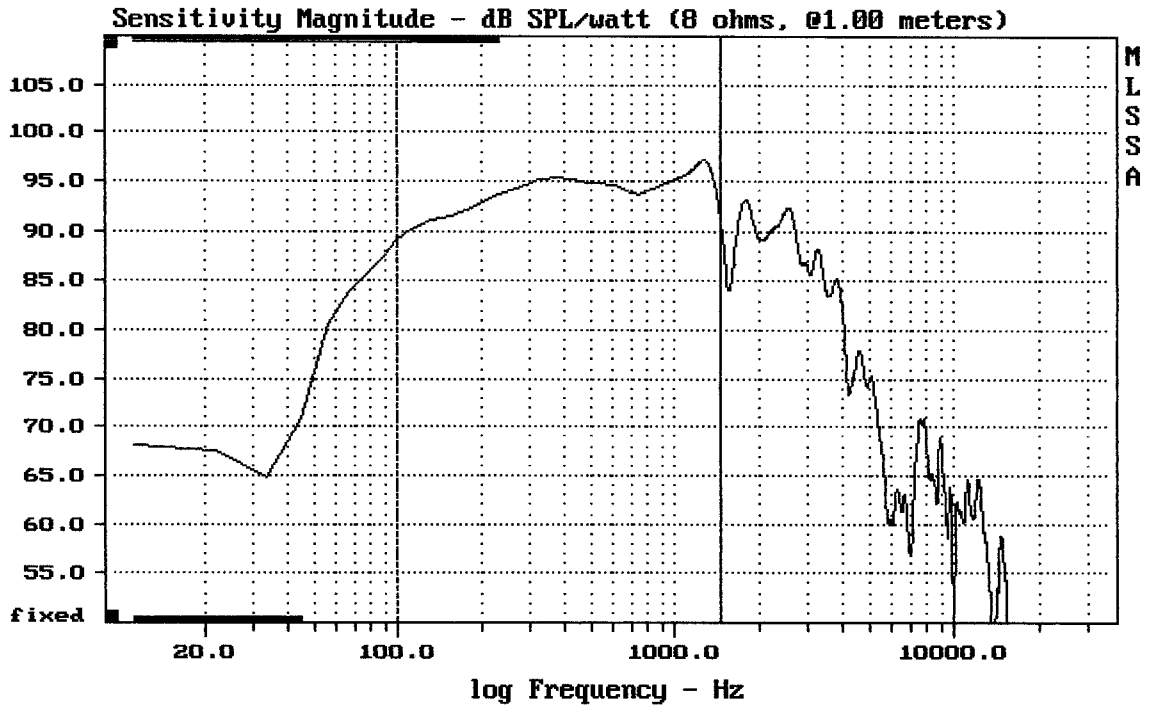
RCF TT22 BIAMP

MLSSA: Frequency Domain



mean: 0.0001989, rms: 0.0008191, std: 0.0007946, max: 0.003681, min: -0.006917

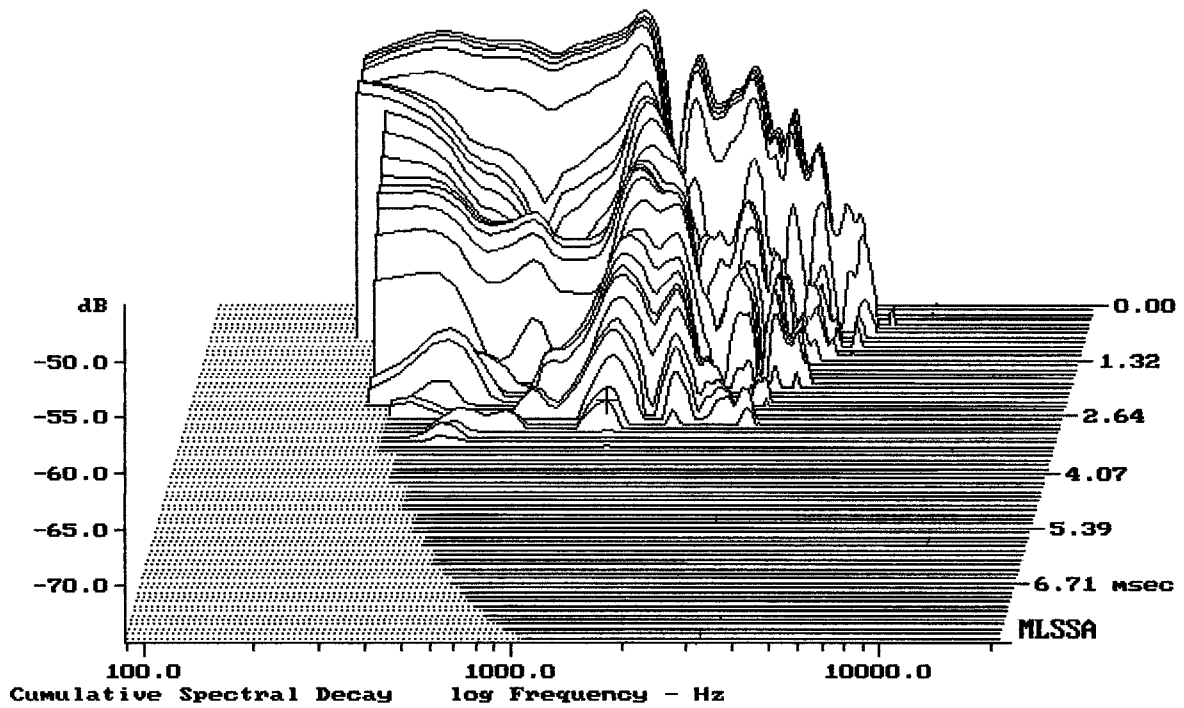
RCF TT22 BIAMP



Level (100:1454 Hz) = 94.10 dB SPL/watt (8 ohms, @1.00 meters)

12" RCF NEO TT22

MLSSA: Frequency Domain



-72.54 dB, 1243 Hz (28), 2.970 msec (28)

MLSSA SPO 4.0D #960903-3057-3075

Measured Data			QC Limits
Line	Parameter	Value	Units
1	RMSE-free	0.90	Ohms
2	Fs	54.46	Hz
3	Re	5.28	Ohms[dc]
4	Res	173.05	Ohms
5	Qms	6.52	
6	Qes	0.20	
7	Qts	0.19	
8	L1	1.58	mH
9	L2	2.62	mH
10	R2	7.68	Ohms
11	RMSE-load	0.72	Ohms
12	Vas(Sd)	46.43	liters
13	Mms	72.83	grams
14	Cms	117	μ M/Newton
15	Bl	25.71	Tesla-M
16	SPLref(Sd)	97.6	dB[Re]
17	Rub-index	0.00	

Method: Mass-loaded (80.00 grams)

Area (Sd): 530.93 sq cm

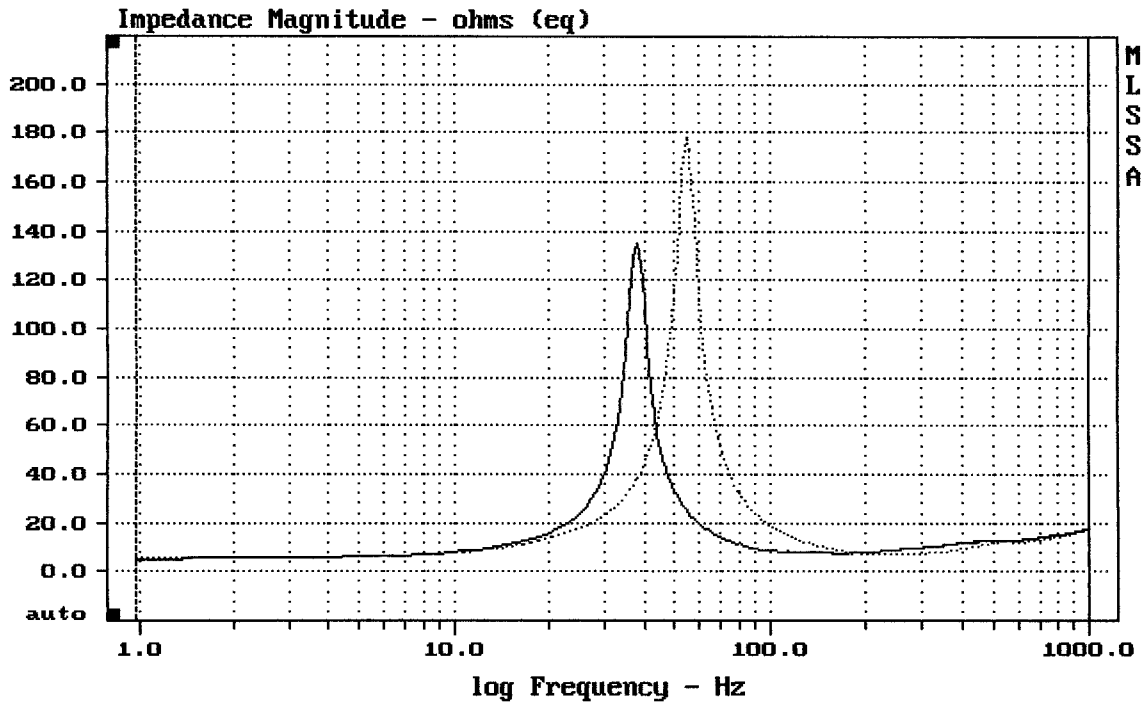
DCR mode: Measure (-0.07 ohms)

QC file: CLOSED

Analysis successful. Shift in Fs = -30.3% (-20% to -50% is recommended).

12" RCF NEO FROM TT22

MLSSA: Parameters



mean: 15.23, rms: 22.86, std: 17.04, max: 178.1, min: 5.375

MLSSA: Frequency Domain