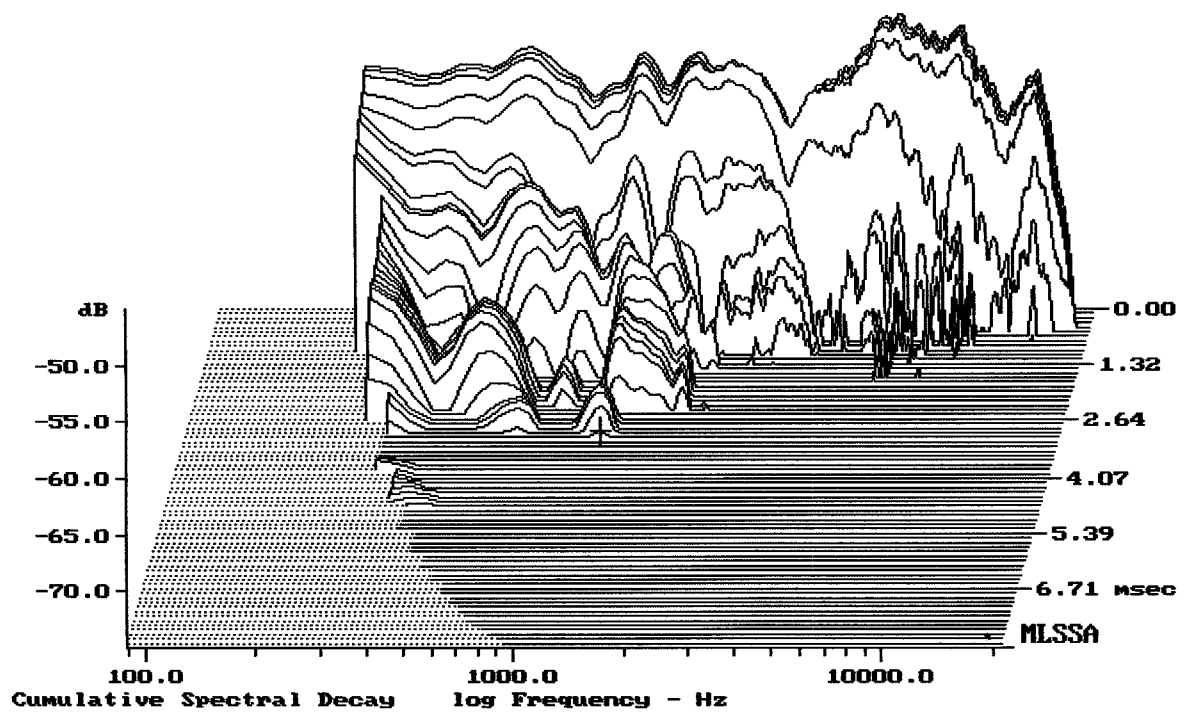


Level (78:16502 Hz) = 97.69 dB SPL/watt (8 ohms, @1.80 meters)

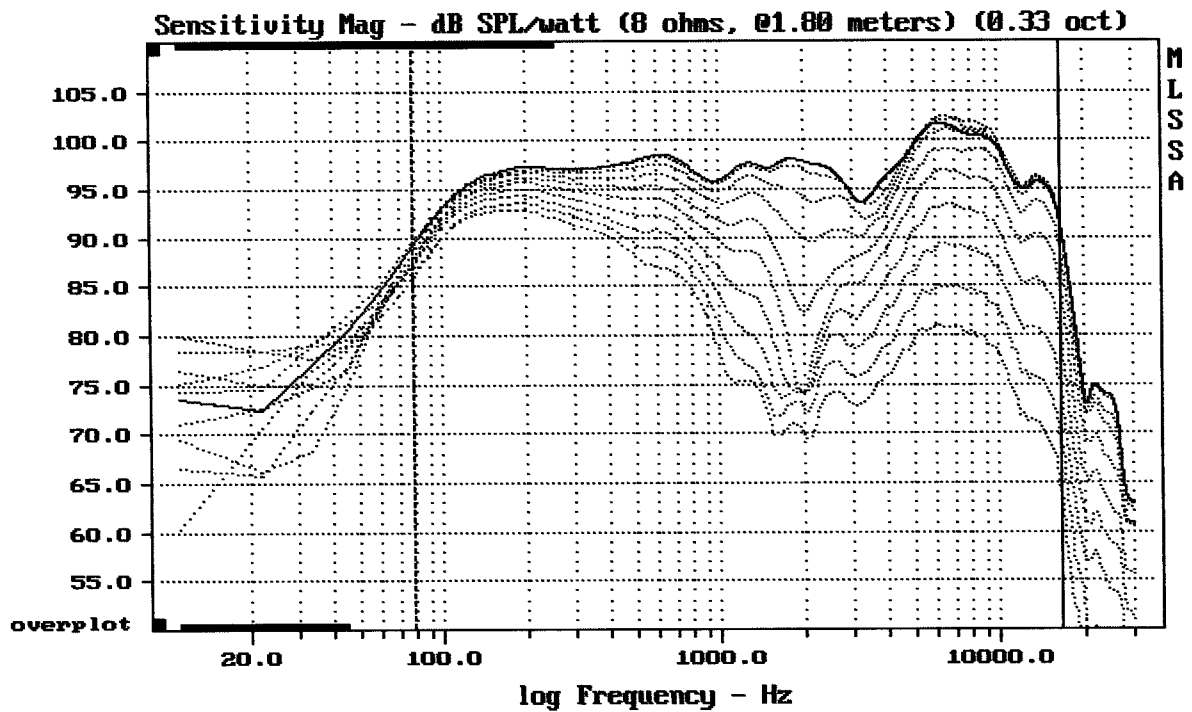
JBL TR125

MLSSA: Frequency Domain



-74.37 dB, 1199 Hz (27), 3.080 msec (29)

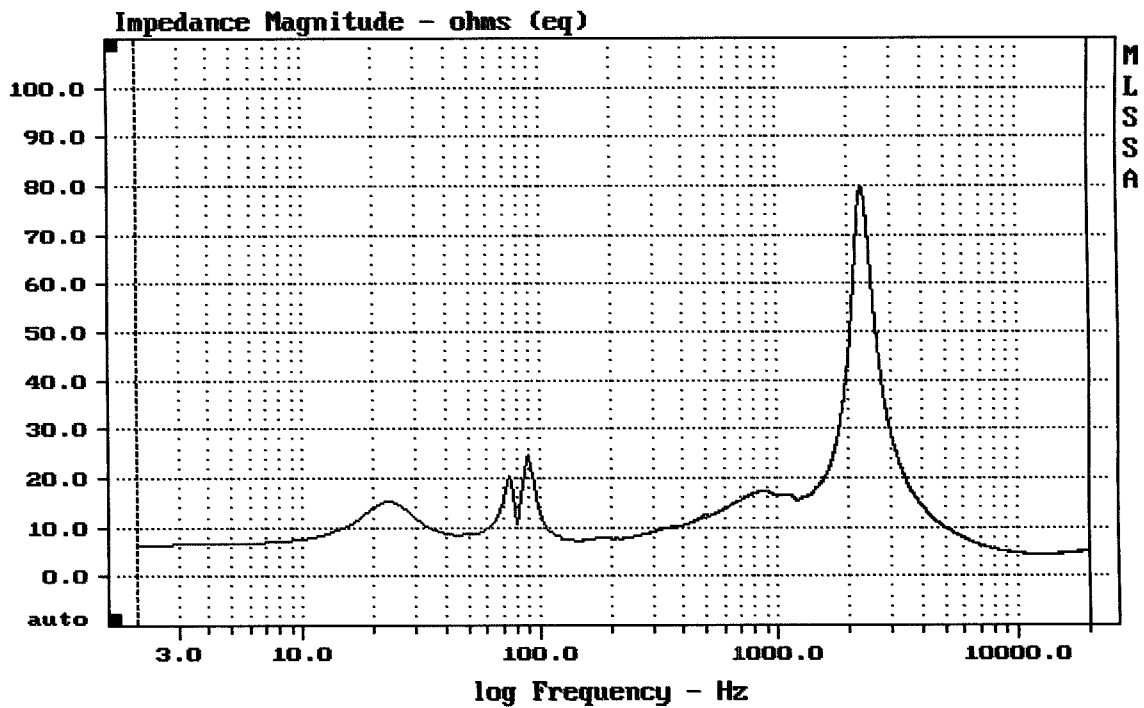
DTTO



Overlay Compare: dev= +19/-6.6, std= 3.9, avg= -22

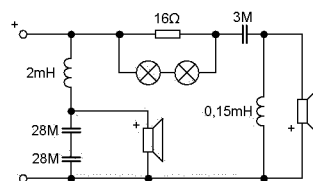
JBL TR125

MLSSA: Frequency Domain

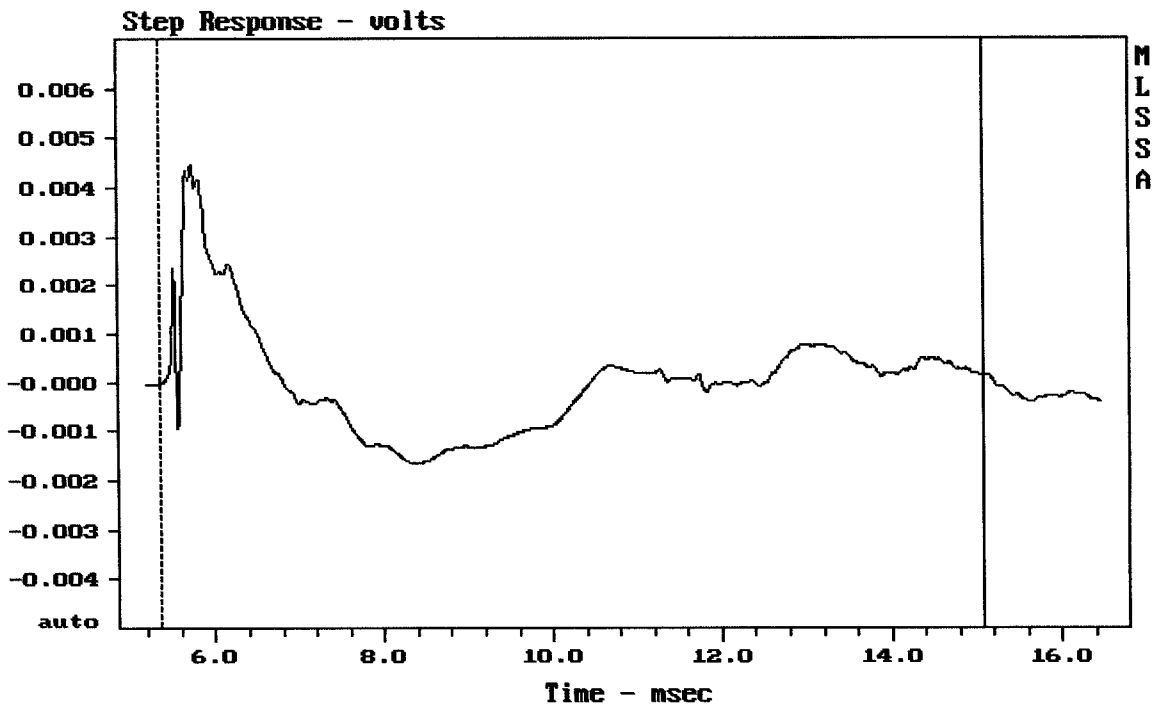


mean: 10.03, rms: 15.77, std: 12.16, max: 79.88, min: 4.404

JBL TR125



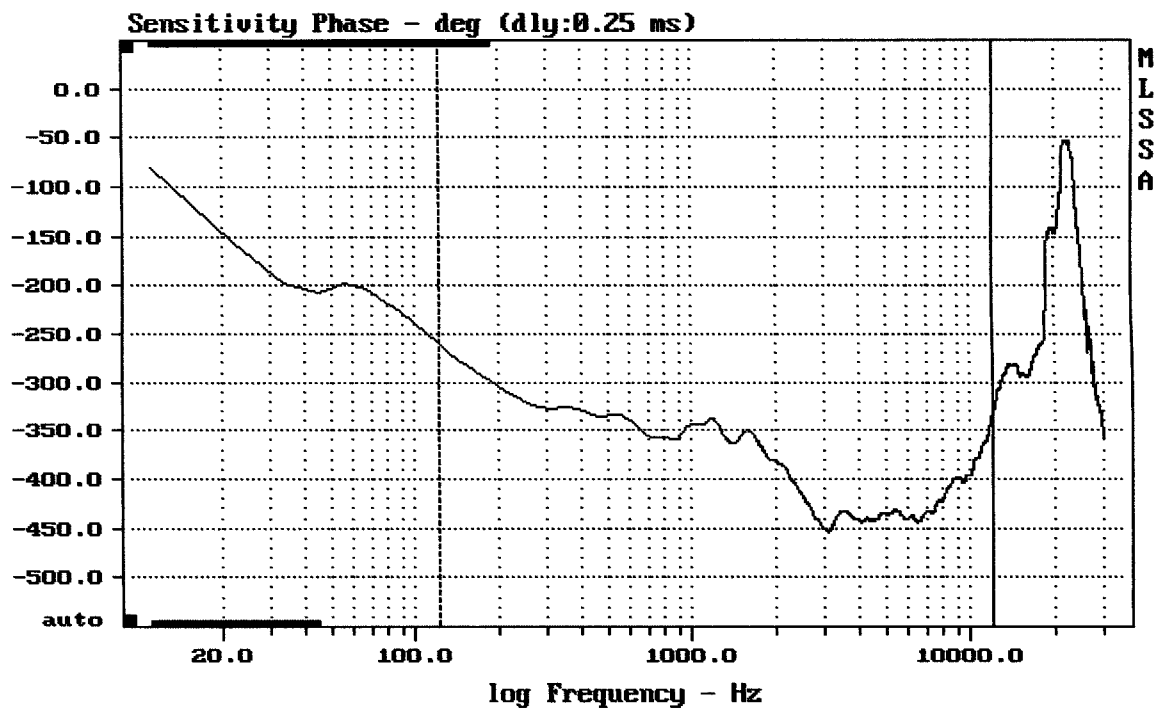
MLSSA: Frequency Domain



mean: 1.862e-005, rms: 0.001118, std: 0.001118, max: 0.004449, min: -0.001652

JBL TR125

MLSSA: Time Domain



mean: -403.5, rms: 405.2, std: 37.1, max: -260.3, min: -453.7

JBL TR125

MLSSA: Frequency Domain