

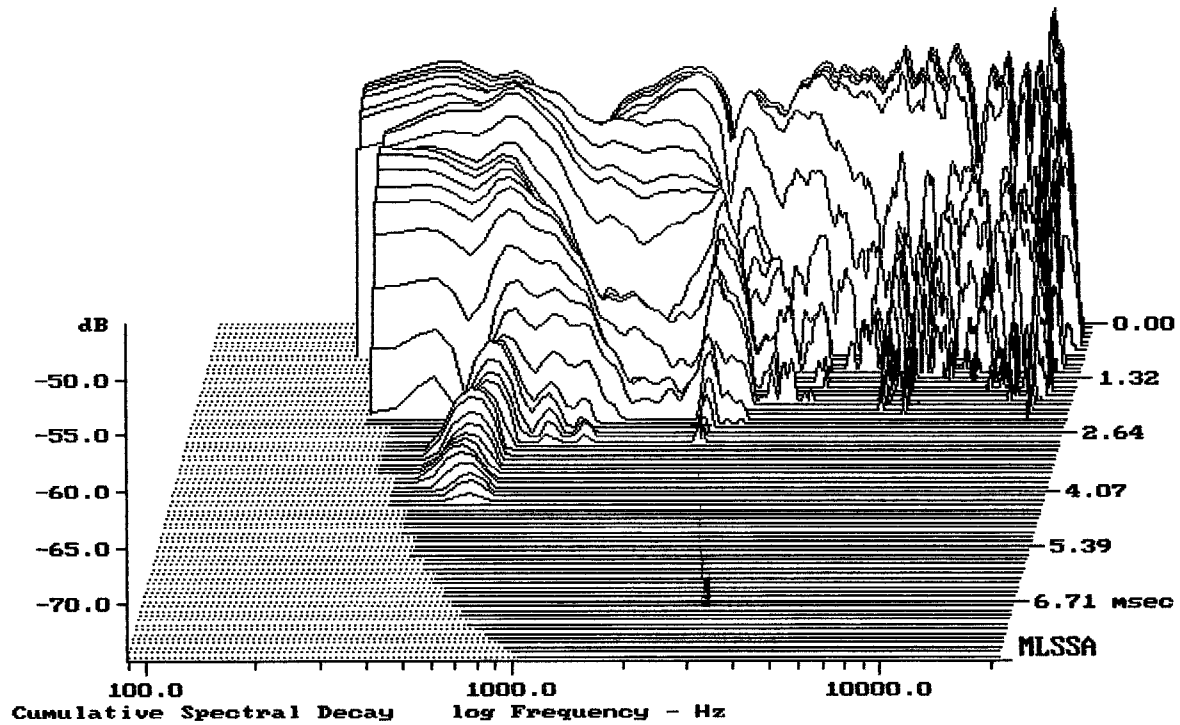

---

Level (78:18211 Hz) = 96.69 dB SPL/watt (8 ohms, @1.65 meters)

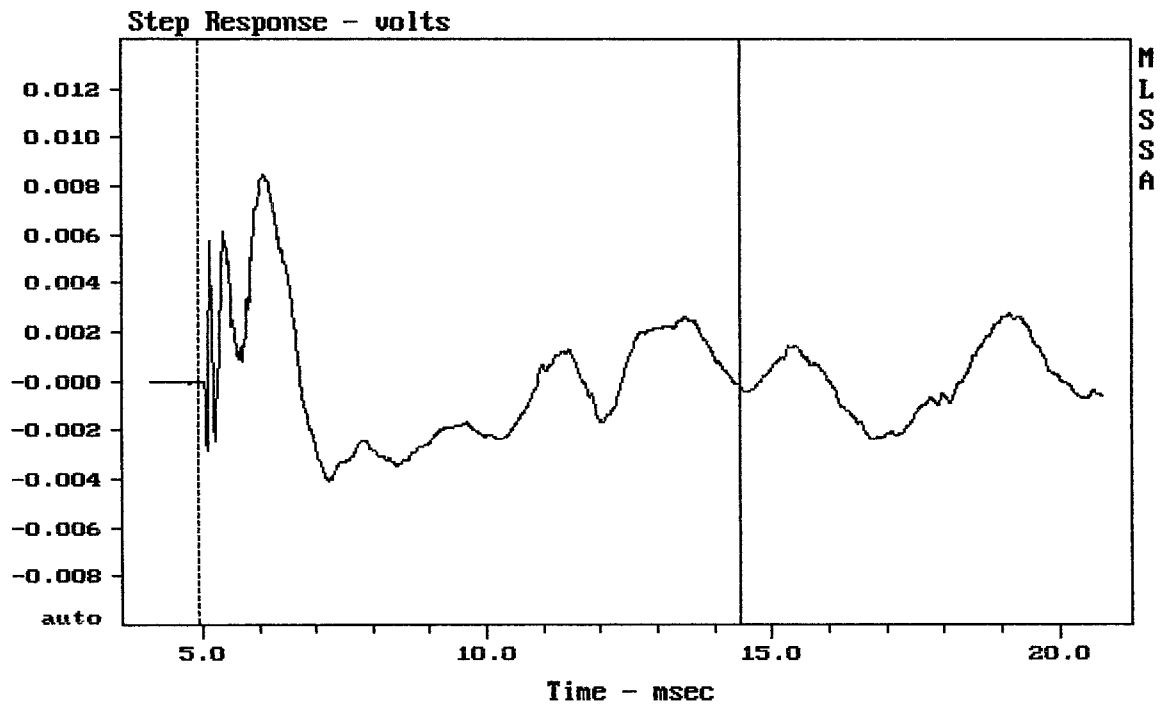
---

MARTIN AUDIO W3P

MLSSA: Frequency Domain



-73.49 dB, 2219 Hz (50), 2.860 msec (27)



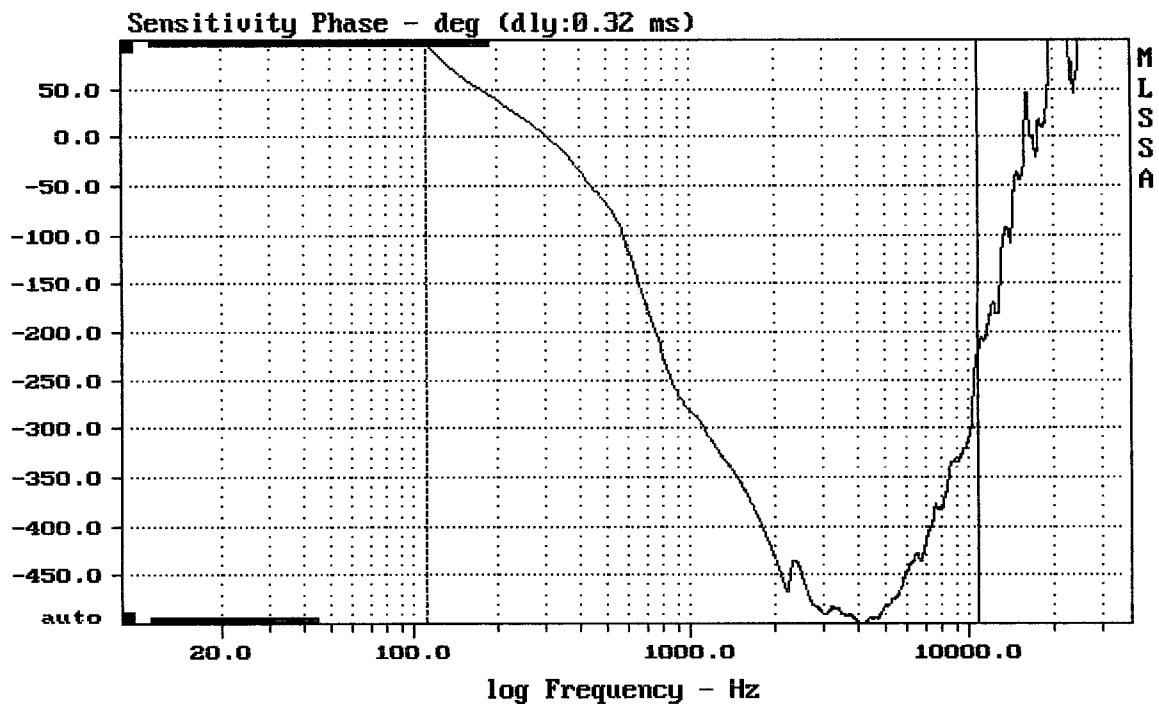

---

mean:  $-2.59e-005$ , rms: 0.002812, std: 0.002812, max: 0.008451, min: -0.004041

---

MARTIN AUDIO W3P

MLSSA: Time Domain

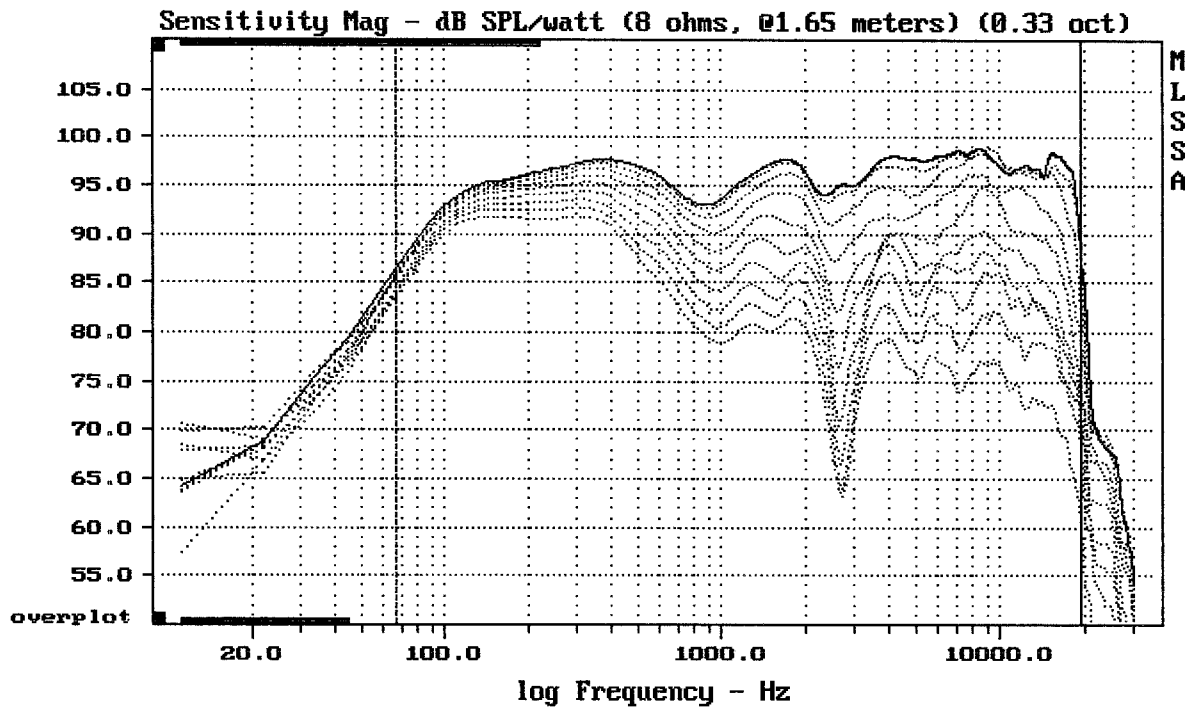



---

mean: -379.8, rms: 396.8, std: 115, max: 96.84, min: -503.1

---

MARTIN AUDIO W3P



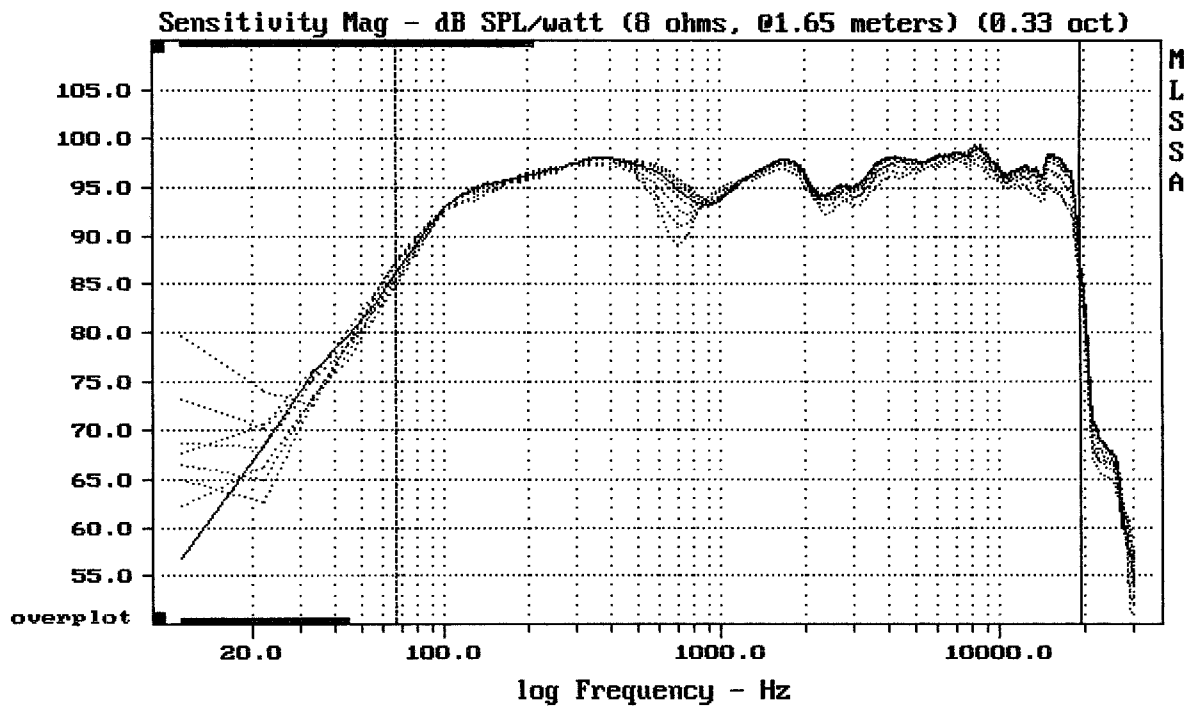

---

Overlay Compare: dev= +20/-9.2, std= 4.8, avg= -23

---

MARTIN AUDIO W3P

MLSSA: Frequency Domain

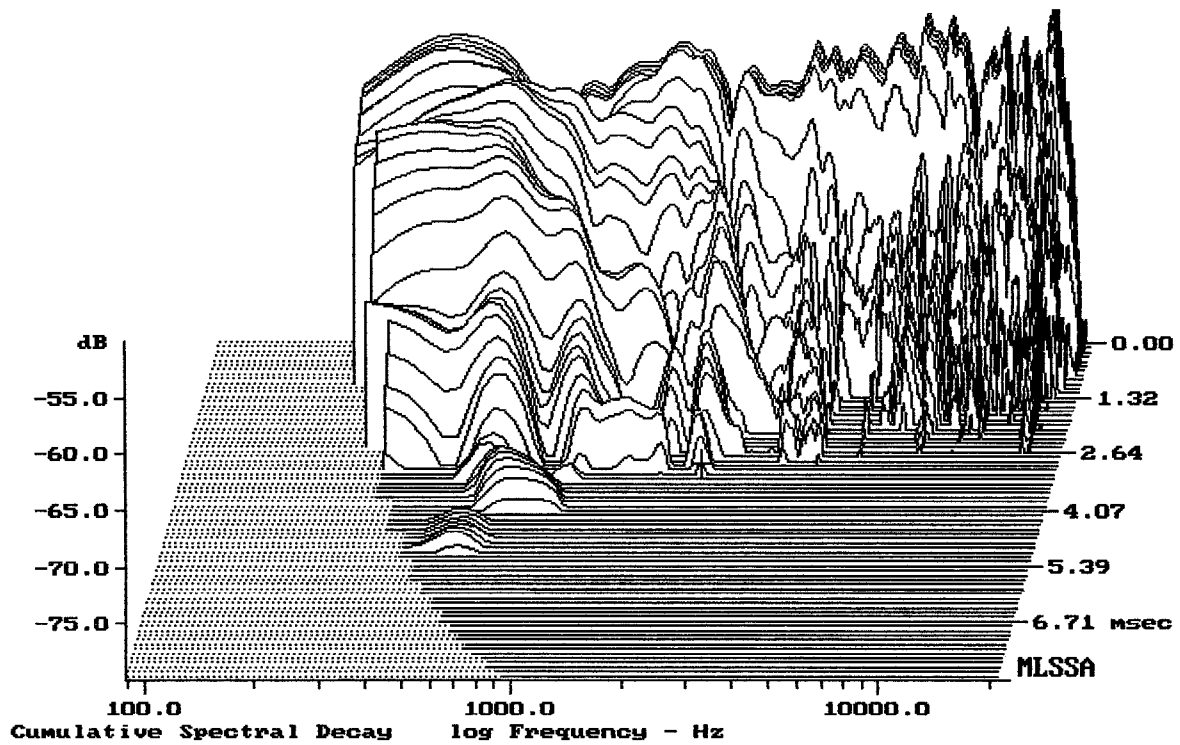



---

mean: 95.57, rms: 95.79, std: 1.78, max: 98.64, min: 85.76

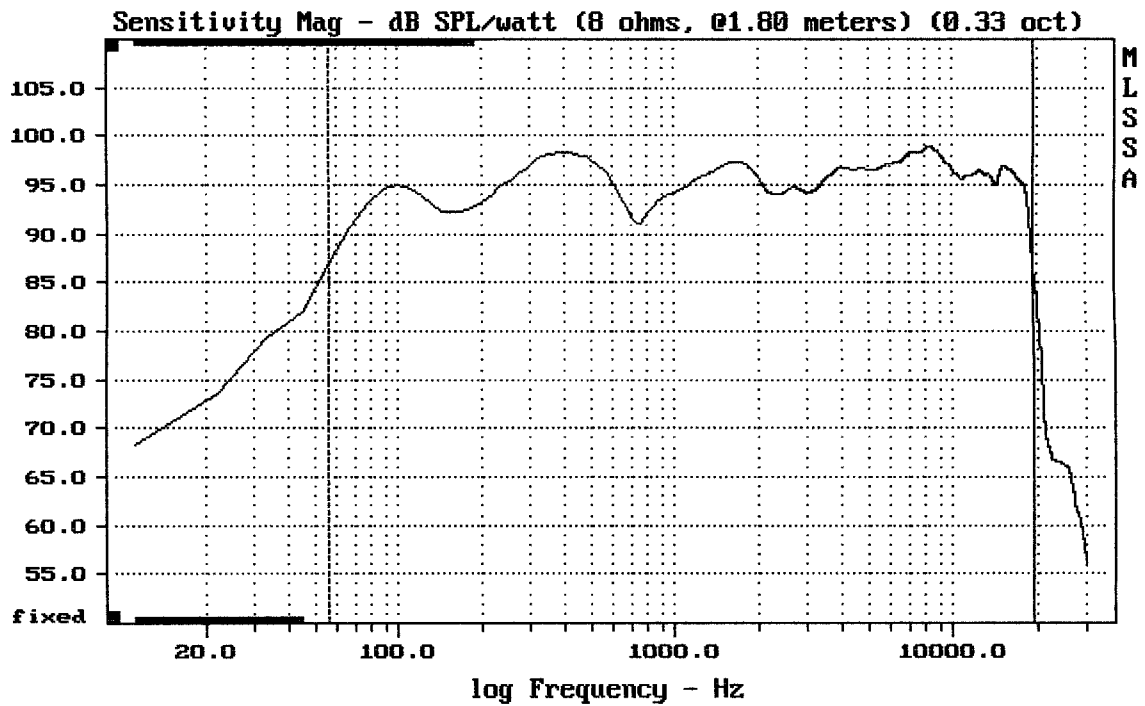
---

MARTIN AUDIO W3P



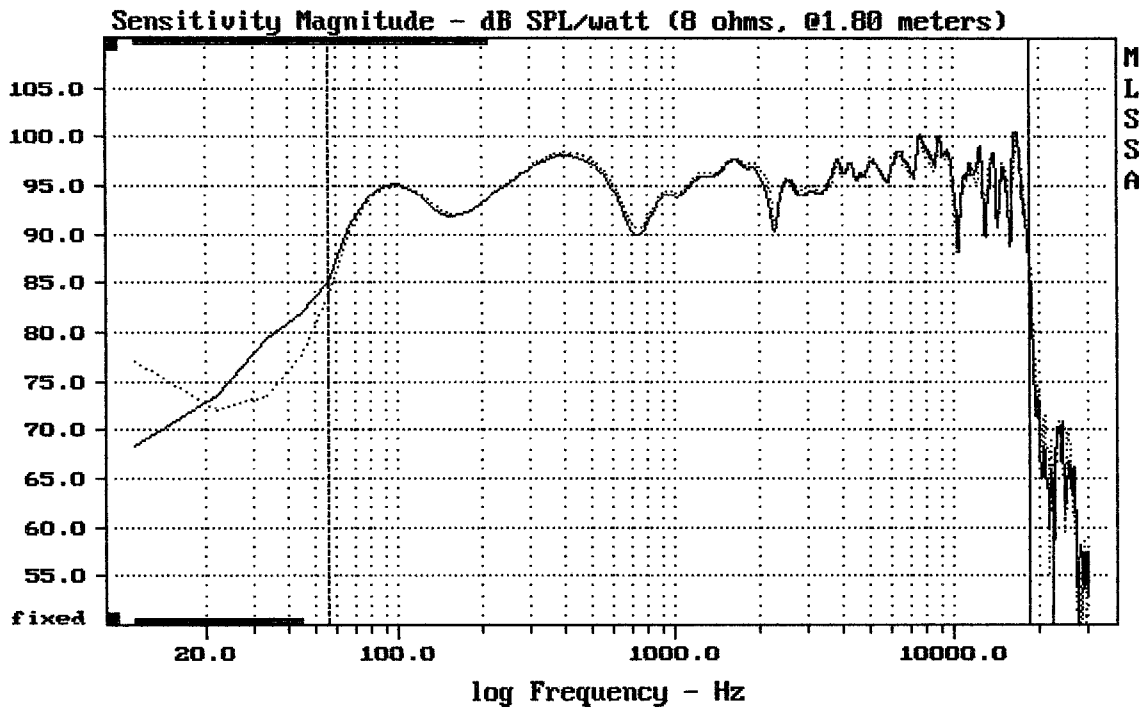
-79.07 dB, 2308 Hz (52), 3.190 msec (30)

DT10



Level (55:19398 Hz) = 95.65 dB SPL/watt (8 ohms, @1.80 meters) (0.33 oct)

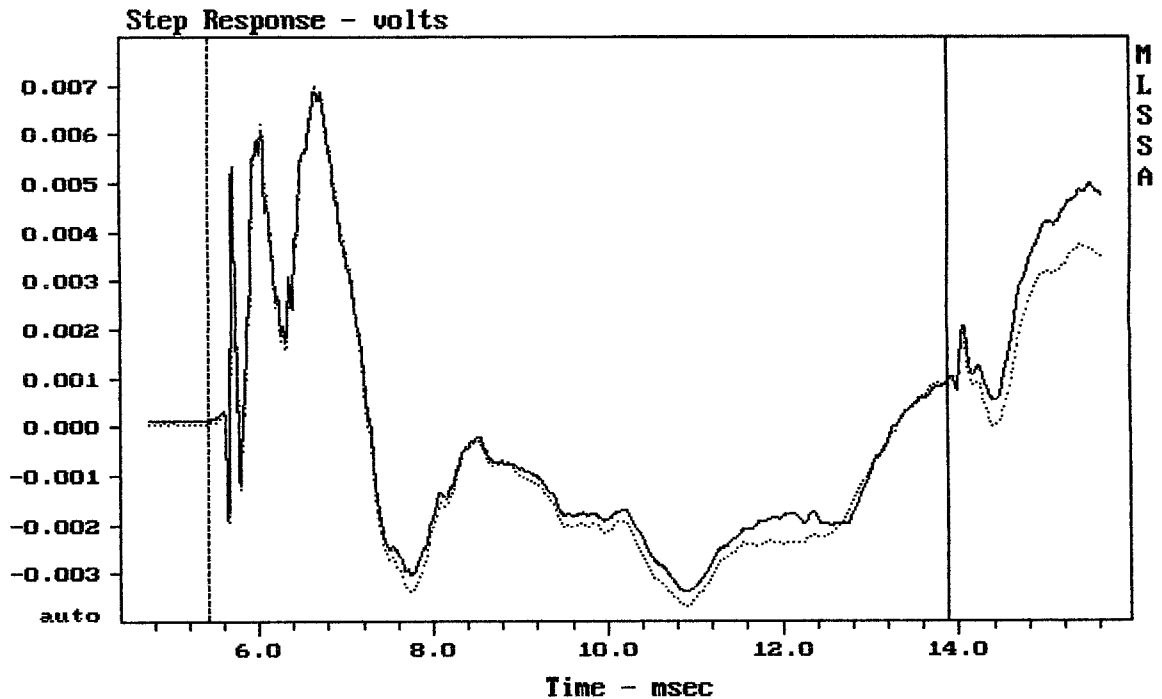
MARTIN AUDIO W3P 2x FLOOR



mean: 96.05, rms: 96.34, std: 2.01, max: 100.24, min: 83.64

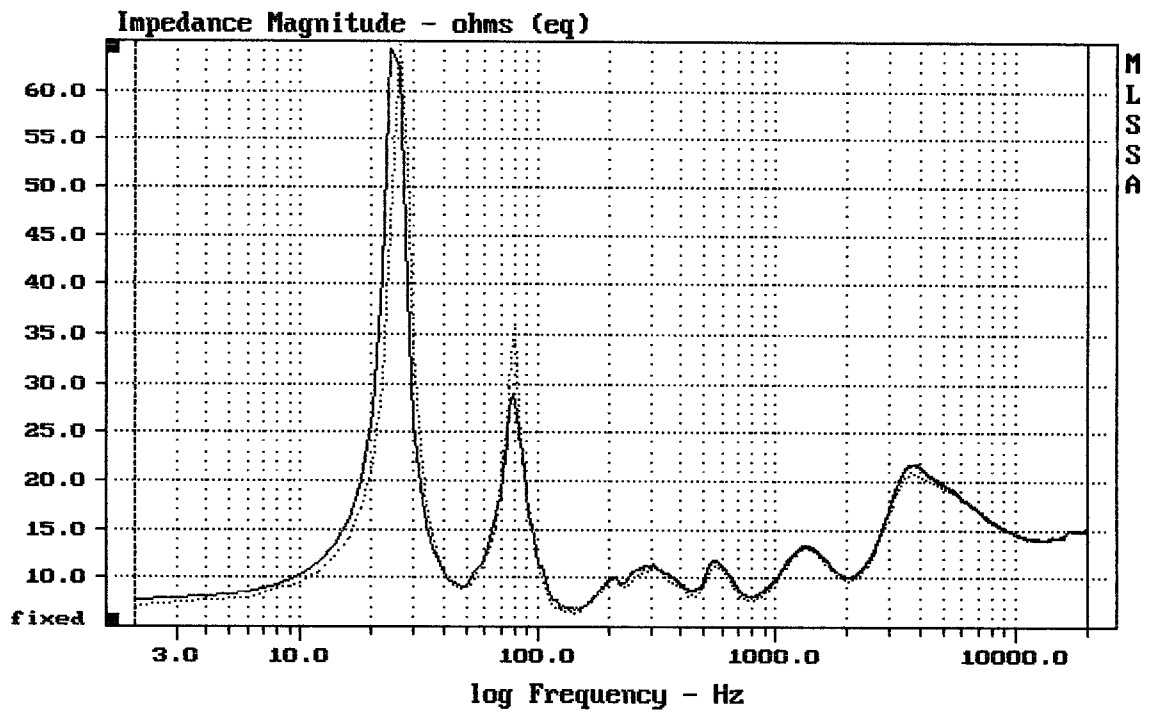
MARTIN AUDIO W3P 2x FLOOR

MLSSA: Frequency Domain



mean: -0.0006802, rms: 0.002631, std: 0.002542, max: 0.006971, min: -0.003687

MARTIN AUDIO W3P 2x FLOOR



---

mean: 15.03, rms: 15.28, std: 2.773, max: 64.64, min: 6.438

---

MARTIN AUDIO W3P 2x

MLSSA: Frequency Domain