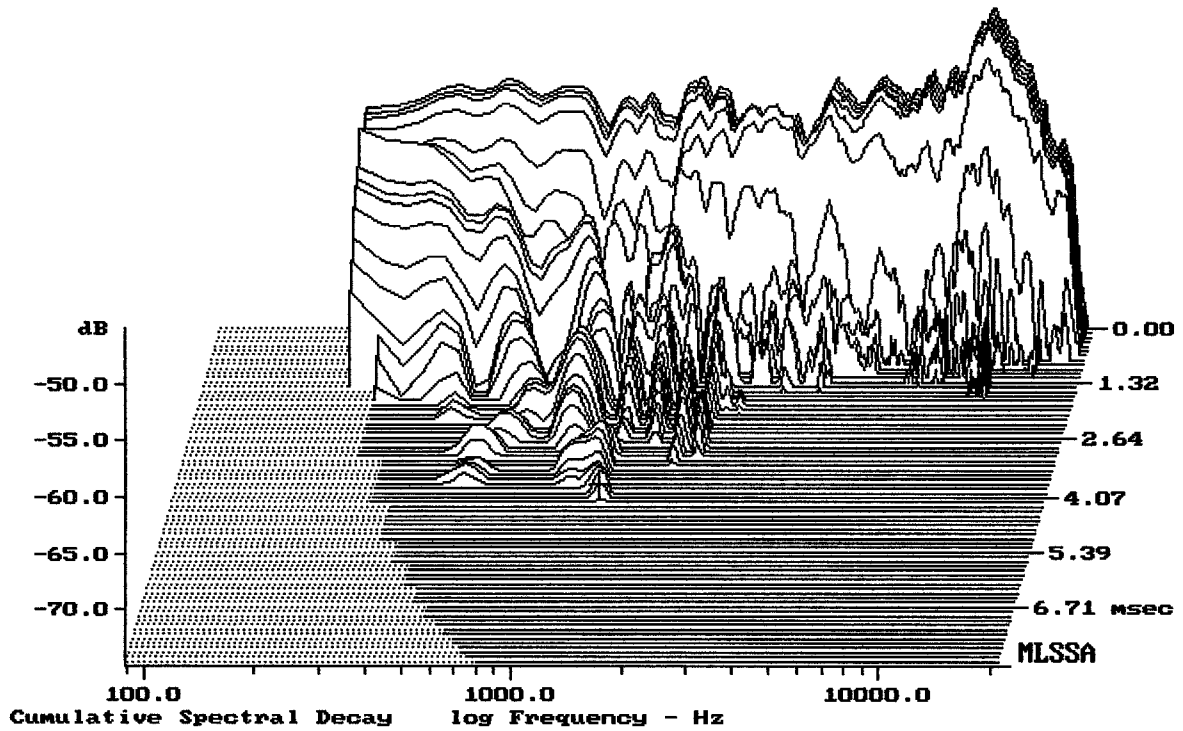


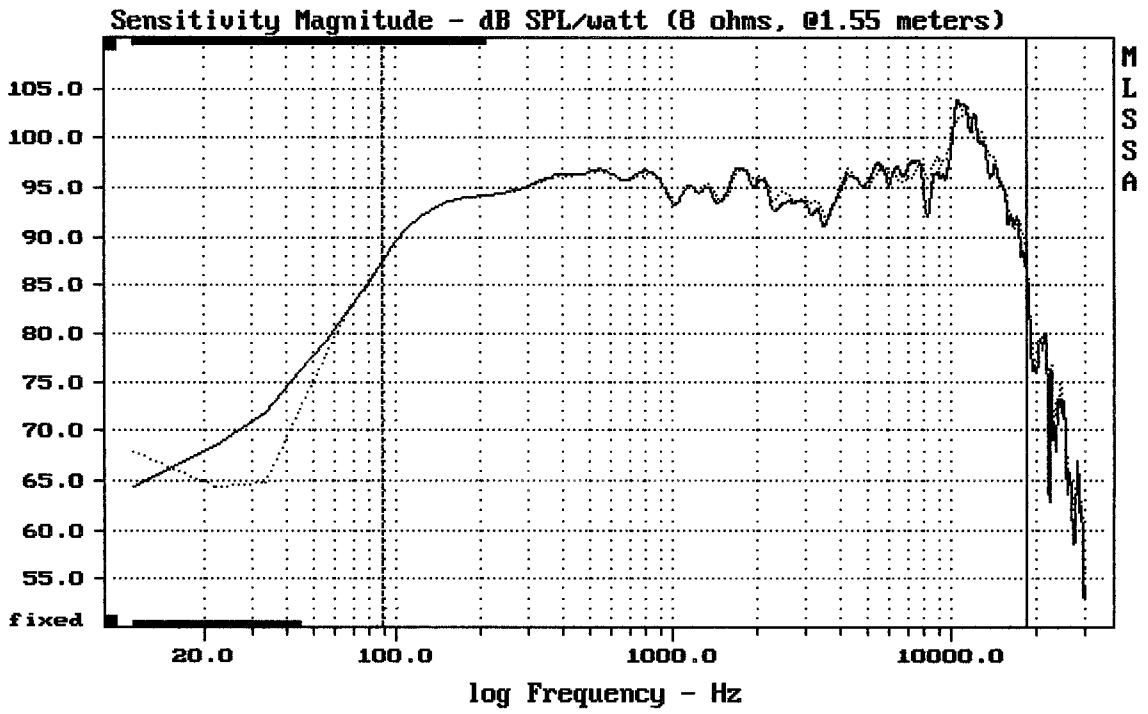
Level (89:18499 Hz) = 95.92 dB SPL/watt (8 ohms, @1.55 meters)

FANE SU-10

MLSSA: Frequency Domain



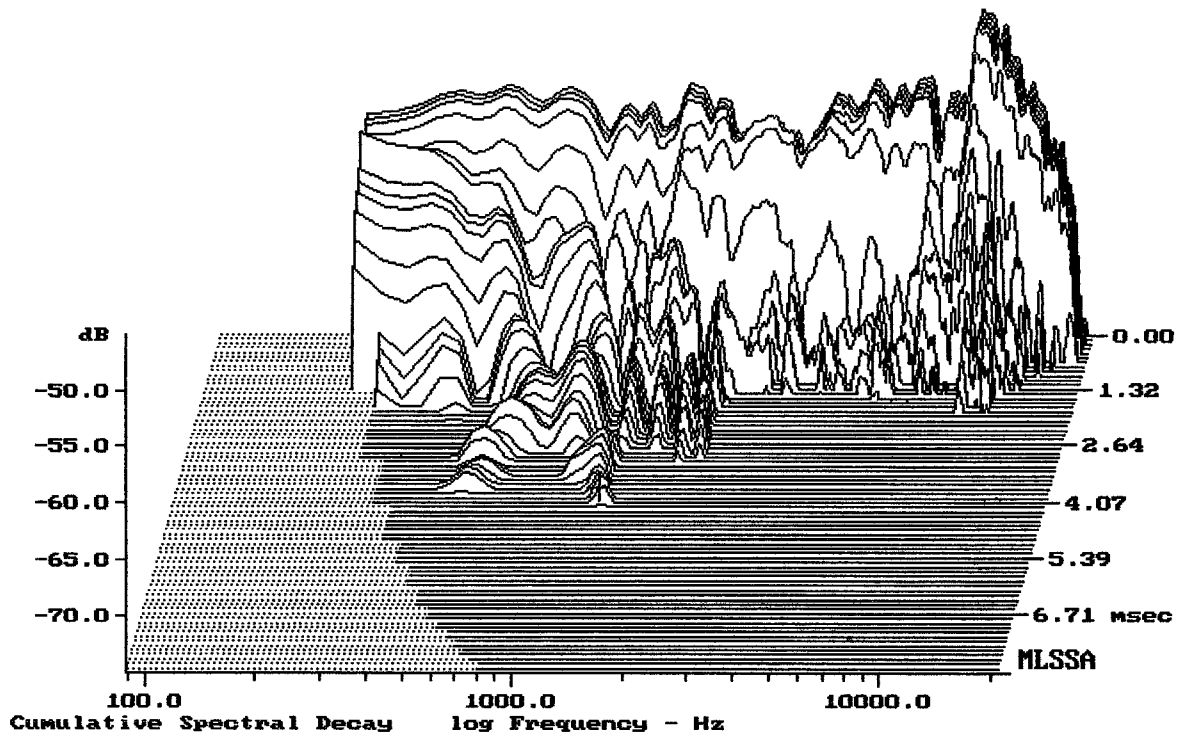
-73.79 dB, 1287 Hz (29), 4.070 msec (38)



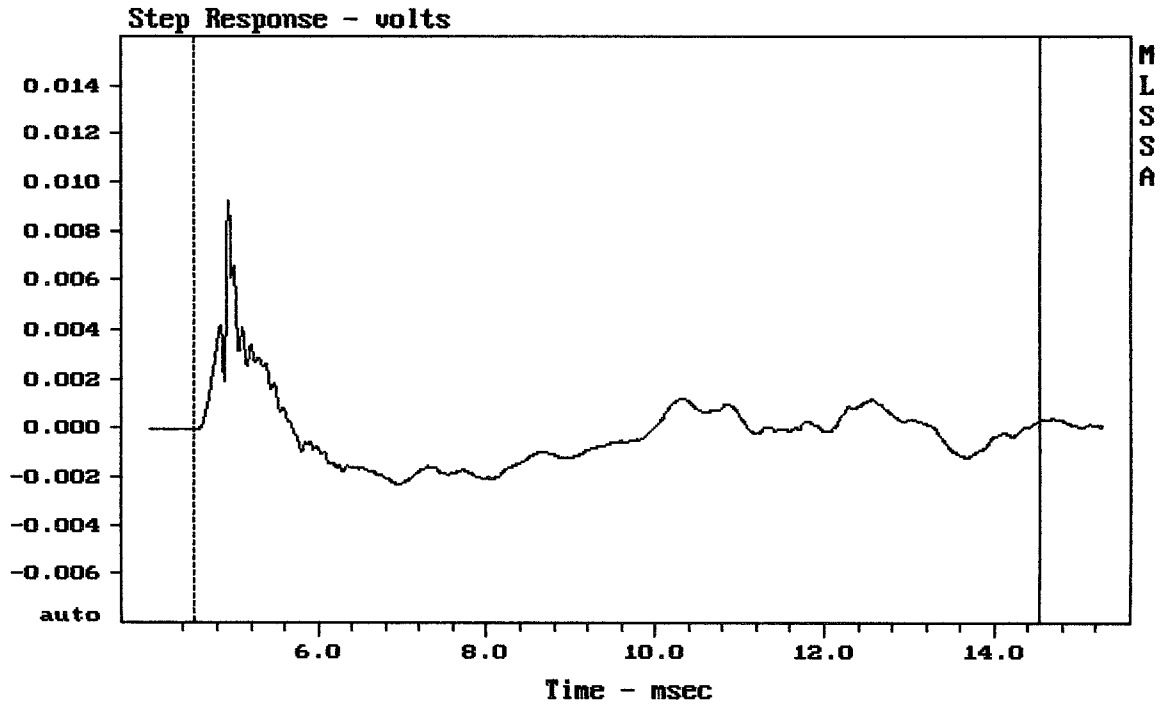
Overlay Compare: dev= +2.2/-3.5, std= 1.1, avg= -0.47

FANE SU-10

MLSSA: Frequency Domain



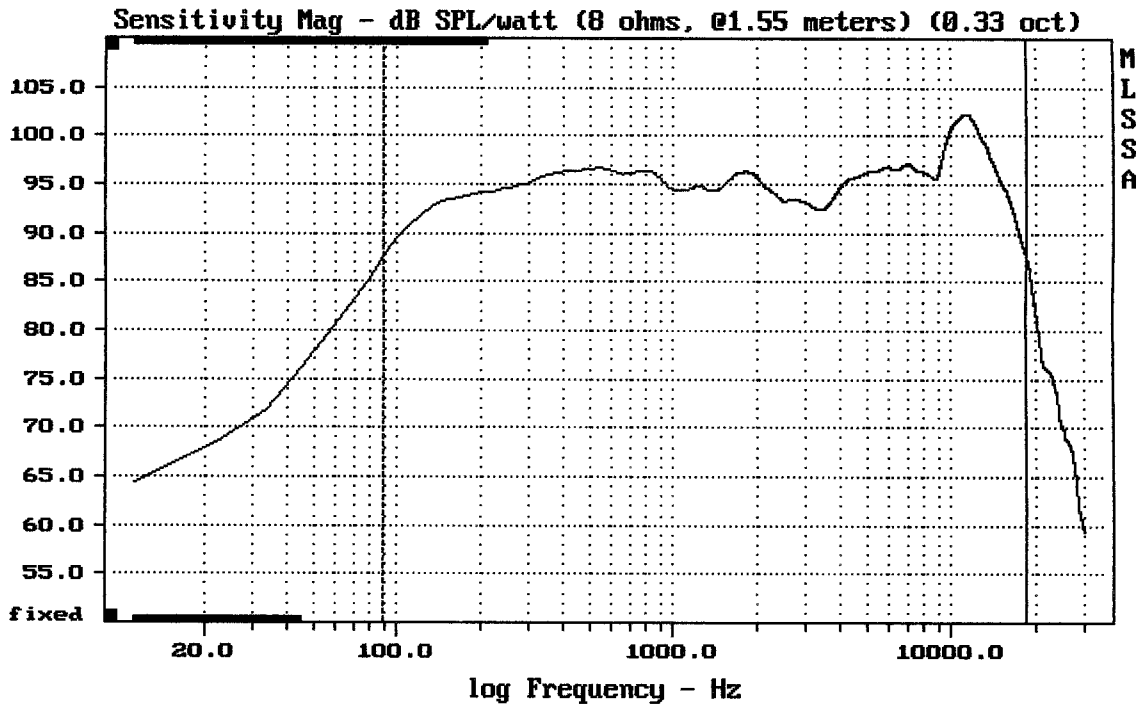
-73.60 dB, 1287 Hz (29), 4.070 msec (38)



mean: -0.0002089, rms: 0.001523, std: 0.001509, max: 0.009249, min: -0.002328

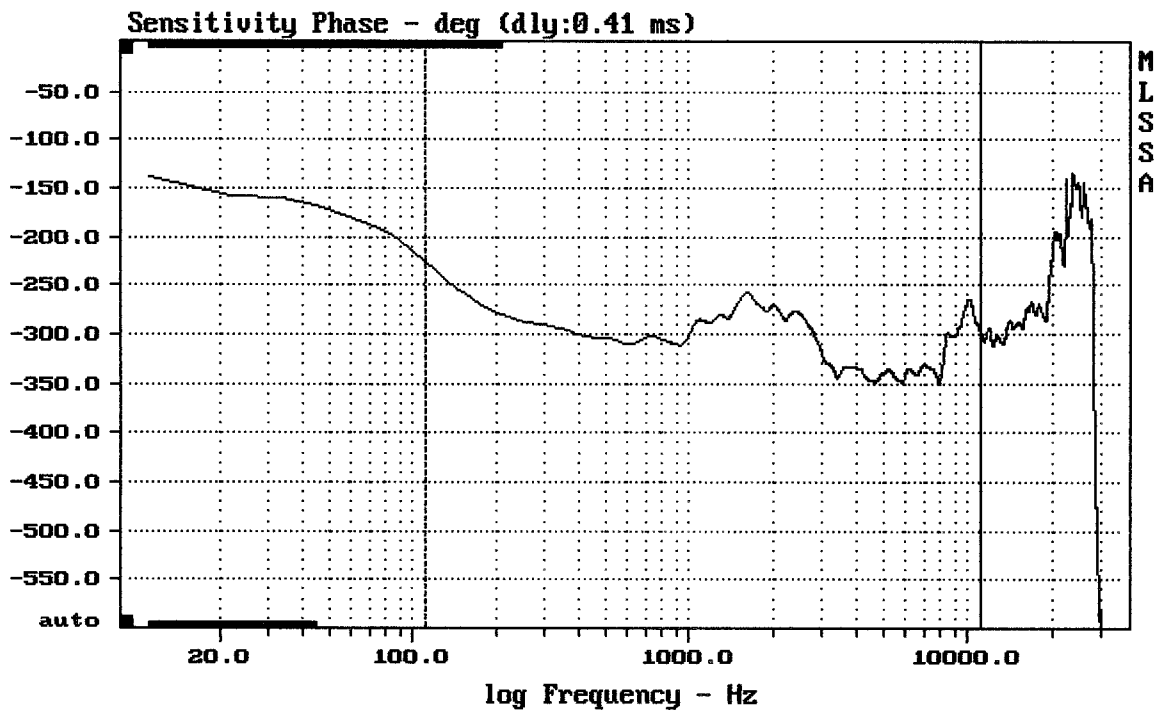
FANE SV-10

MLSSA: Time Domain



Level (89:18499 Hz) = 95.81 dB SPL/watt (8 ohms, @1.55 meters) (0.33 oct)

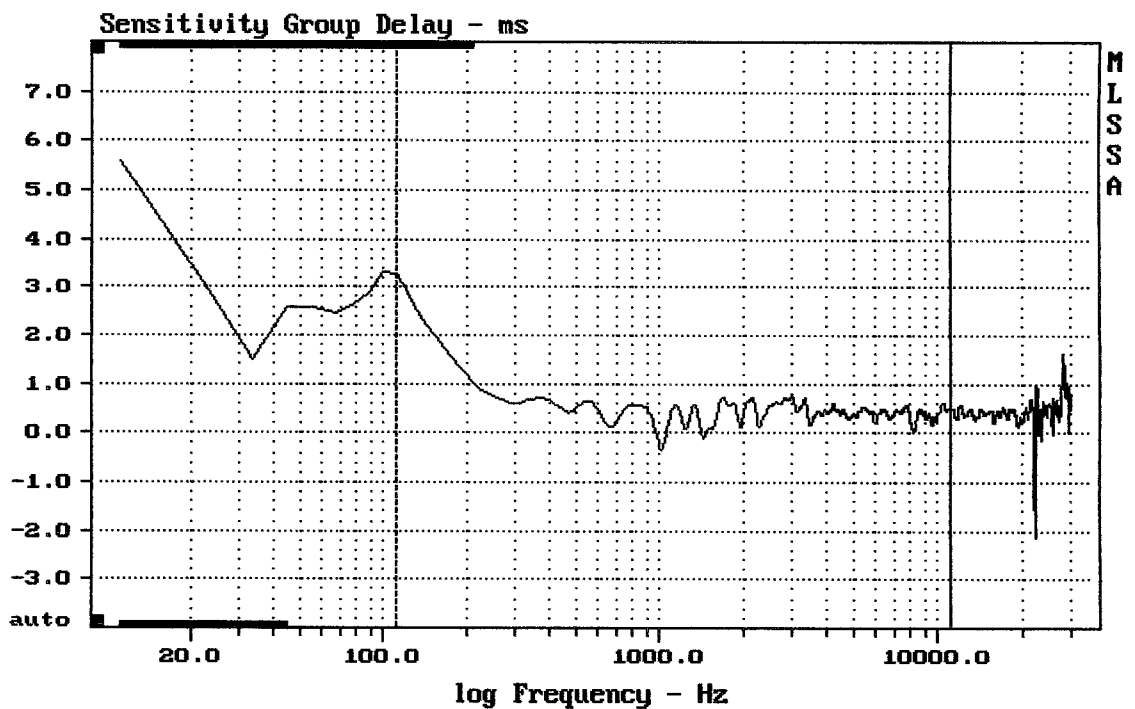
FANE SV-10



mean: -311.5, rms: 312.7, std: 27.96, max: -225.4, min: -348.7

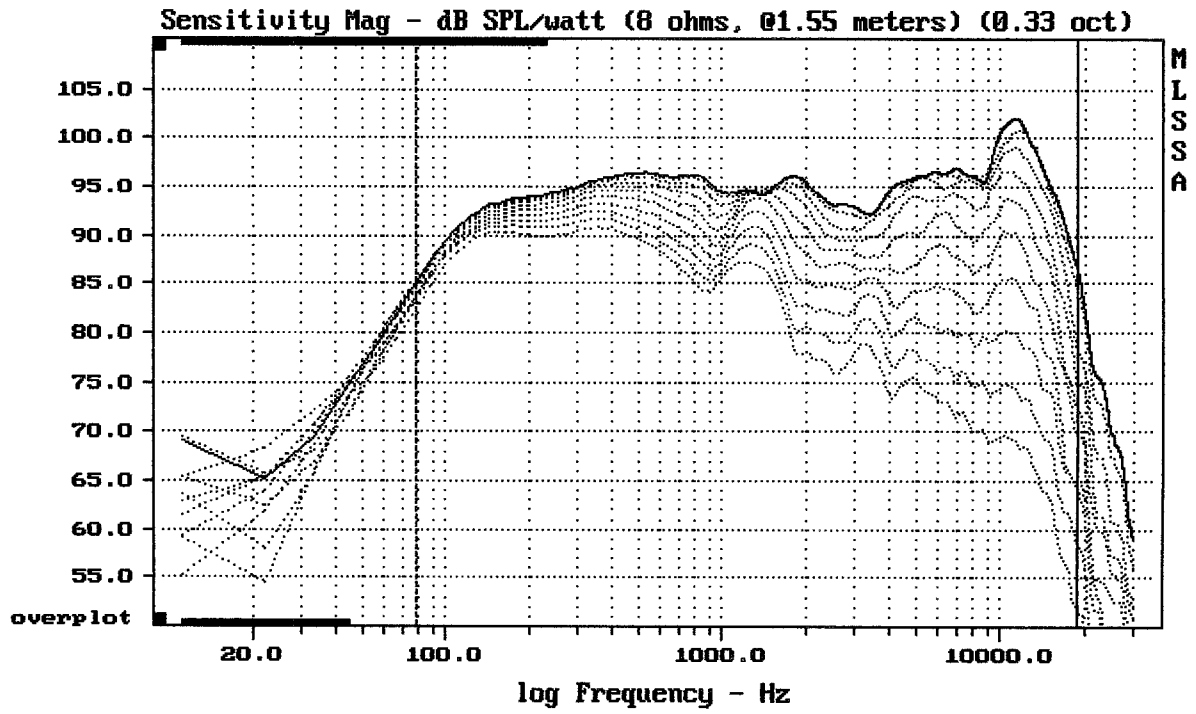
FANE SU-10

MLSSA: Frequency Domain



mean: 0.4285, rms: 0.4875, std: 0.2325, max: 3.276, min: -0.3227

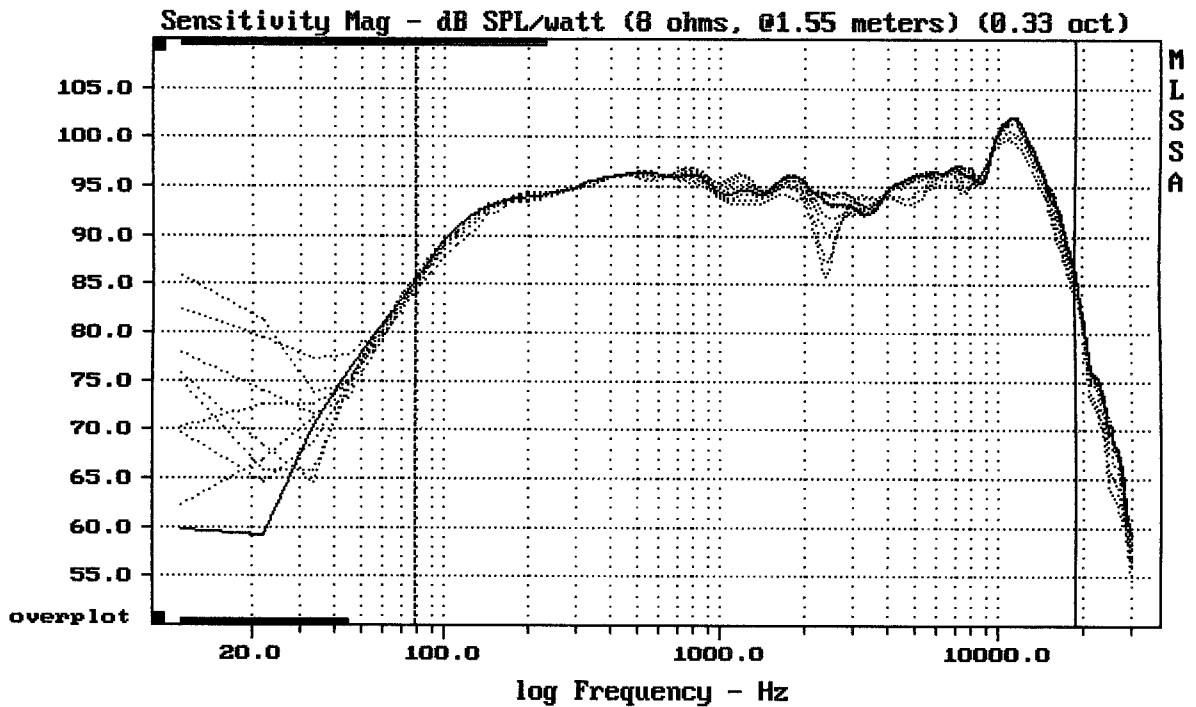
FANE SU-10



Overlay Compare: dev= +24/-9.2, std= 8.4, avg= -26

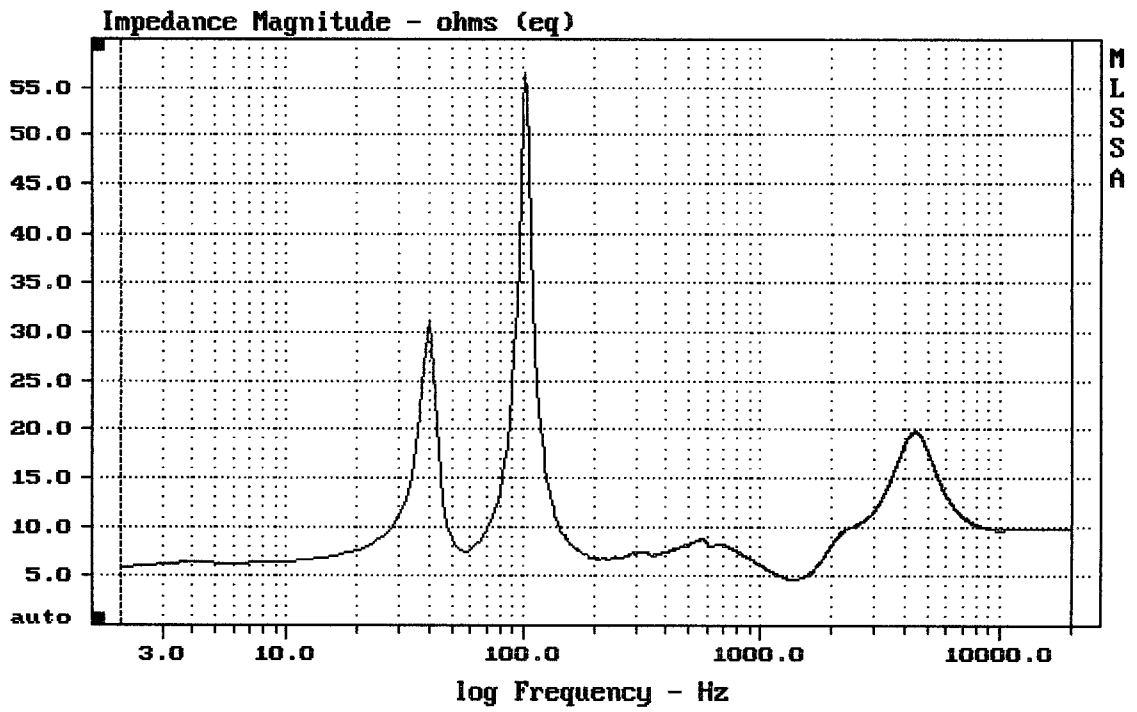
FANE SU-10

MLSSA: Frequency Domain



Overlay Compare: dev= +3.5/-6.1, std= 1.4, avg= -1.6

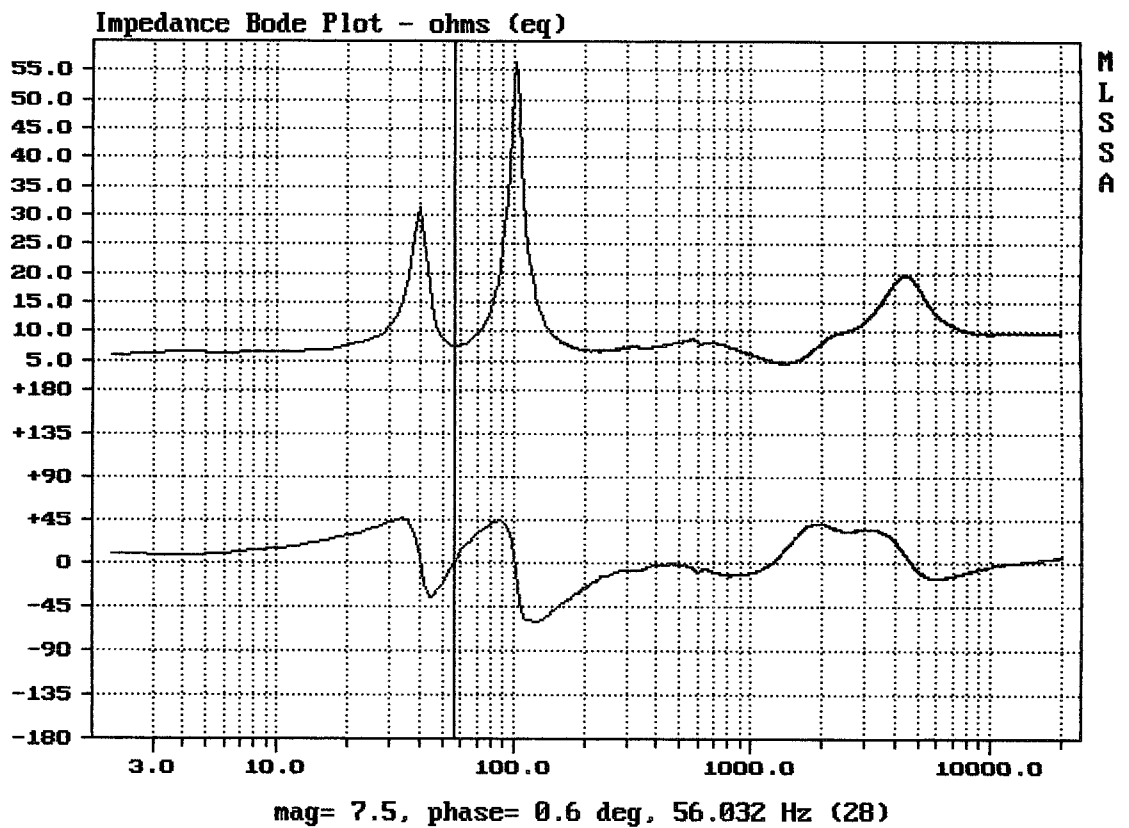
FANE SU-10

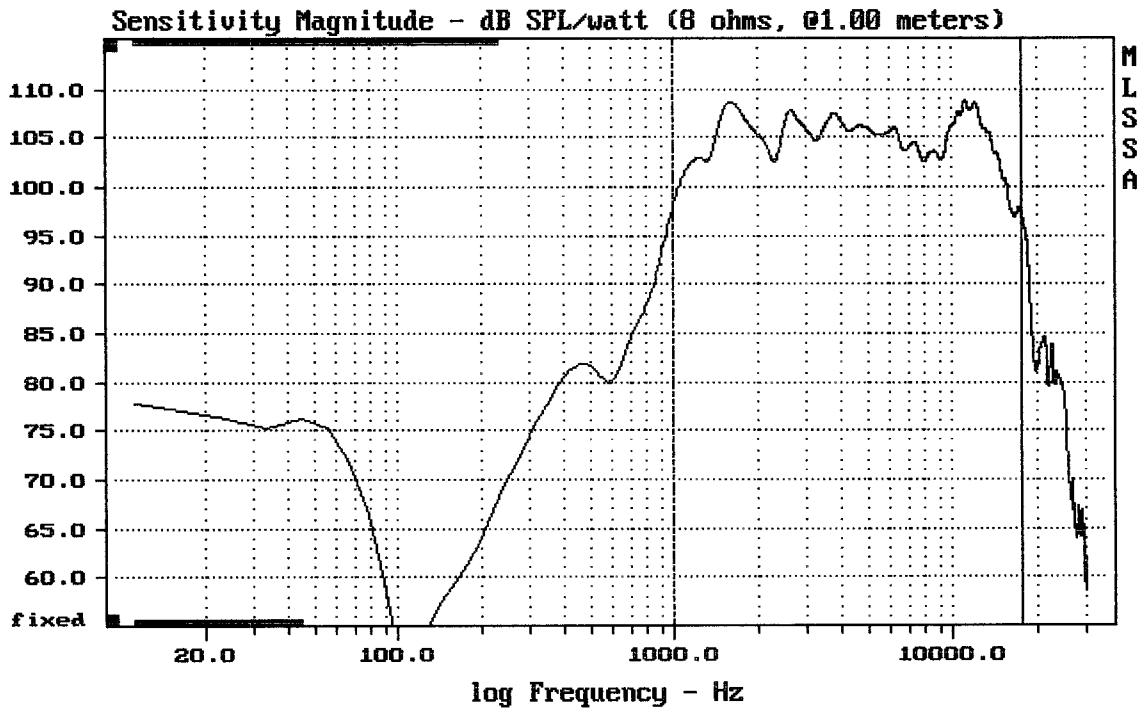


mean: 10.67, rms: 11.11, std: 3.098, max: 56.51, min: 4.678

FANE SU-10

MLSSA: Frequency Domain

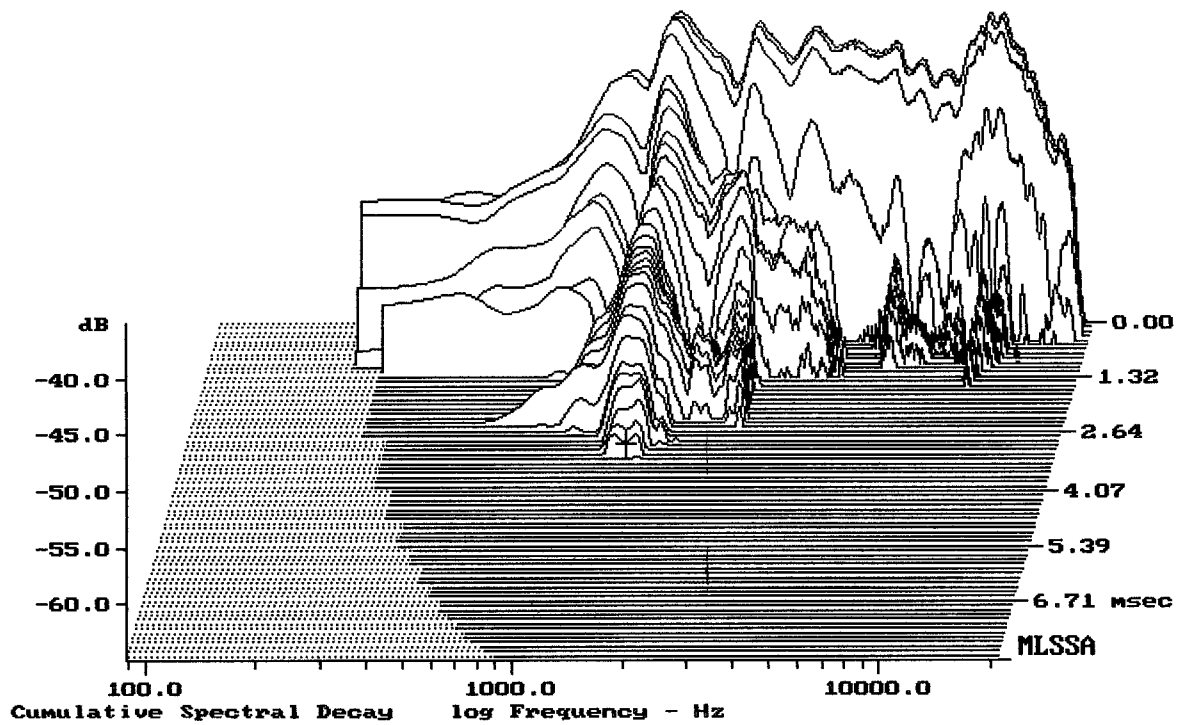




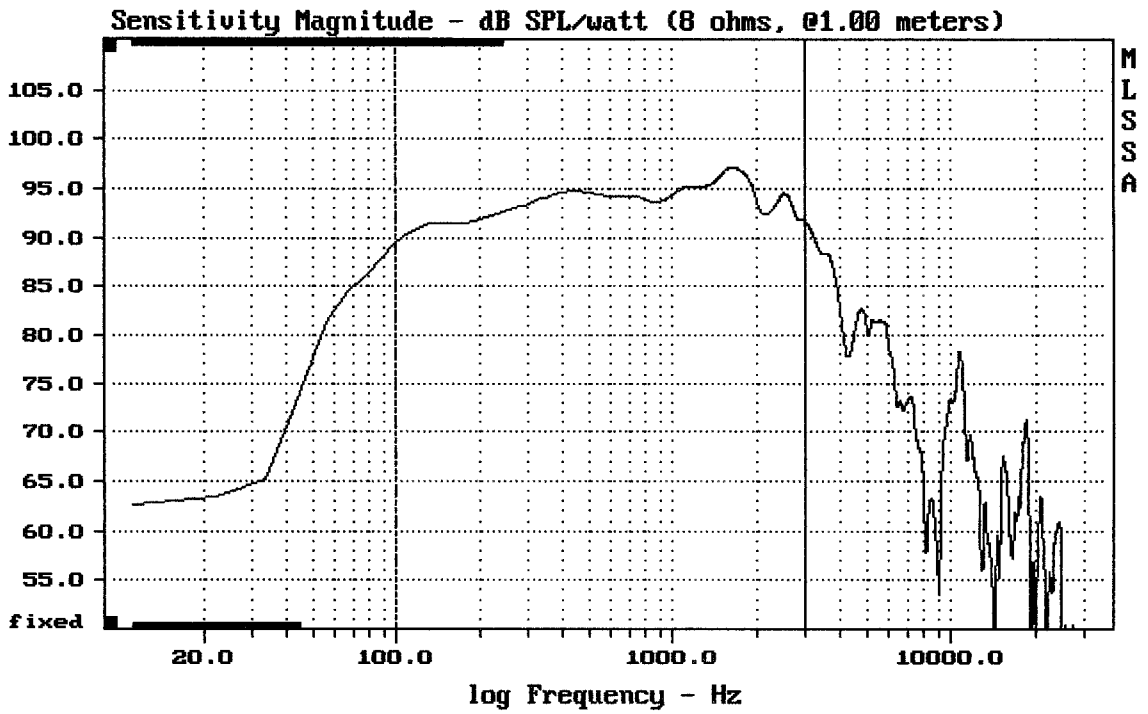
Level (999:17600 Hz) = 105.42 dB SPL/watt (8 ohms, 01.00 meters)

CD140 + HORN SU-10

MLSSA: Frequency Domain



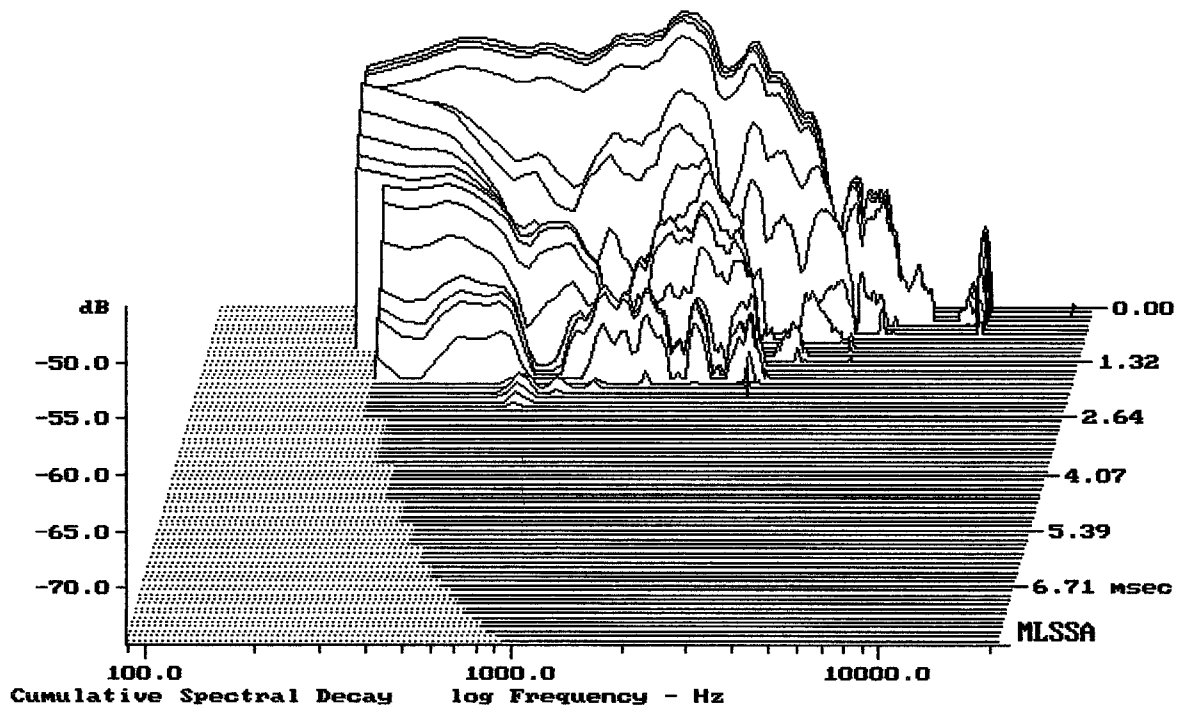
-64.00 dB, 1420 Hz (32), 3.190 msec (30)



Level (100:3007 Hz) = 93.87 dB SPL/watt (8 ohms, @1.00 meters)

10" FROM FANE SU-10

MLSSA: Frequency Domain



-74.42 dB, 2797 Hz (63), 1.980 msec (19)

Measured Data		QC Limits	
Line	Parameter	Value	Units
1	RMSE-free	0.39	Ohms
2	Fs	78.39	Hz
3	Re	5.77	Ohms[dc]
4	Res	80.14	Ohms
5	Qms	7.36	
6	Qes	0.53	
7	Qts	0.49	
8	L1	0.75	mH
9	L2	1.23	mH
10	R2	5.41	Ohms
11	RMSE-load	0.66	Ohms
12	Vas(Sd)	24.40	liters
13	Mms	31.27	grams
14	Cms	132	$\mu\text{M}/\text{Newton}$
15	B1	12.95	Tesla-M
16	SPLref(Sd)	95.3	dB[Re]
17	Rub-index	0.01	

Method: Mass-loaded (40.00 grams)

Area (Sd): 363.05 sq cm

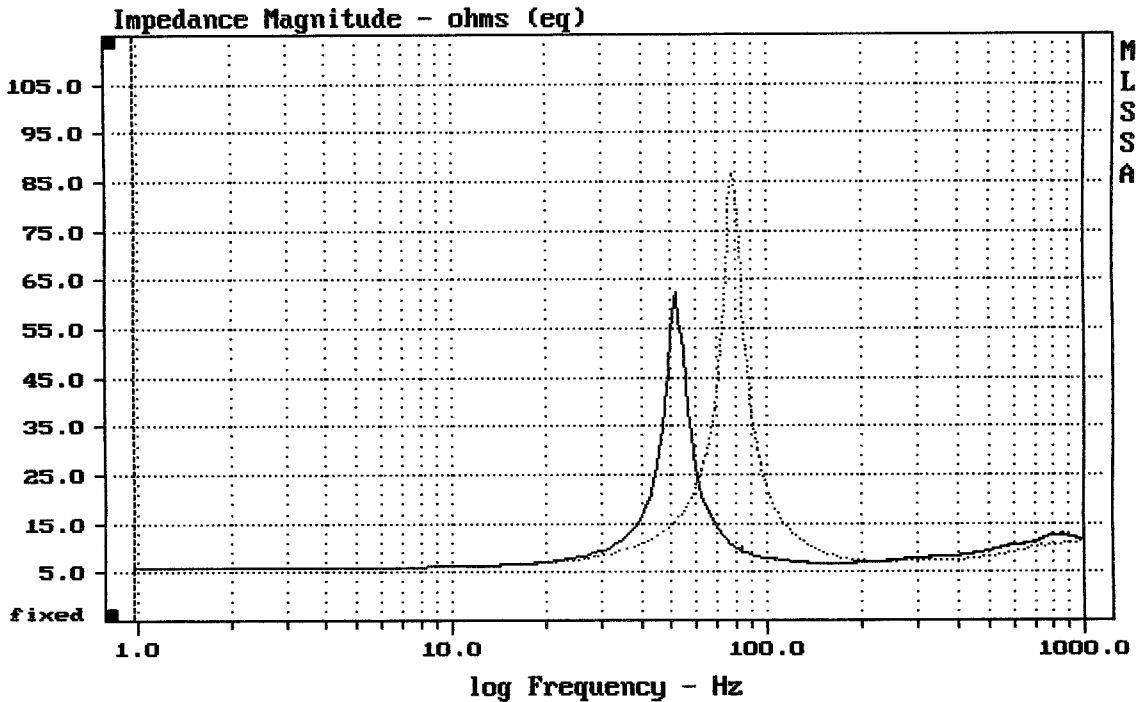
DCR mode: Measure (-0.08 ohms)

QC file: CLOSED

Analysis successful. Shift in Fs = -33.8% (-20% to -50% is recommended).

10" FROM SV-10 SV-1001

MLSSA: Parameters



mean: 10.83, rms: 13.85, std: 8.631, max: 86.65, min: 5.789

MLSSA: Frequency Domain