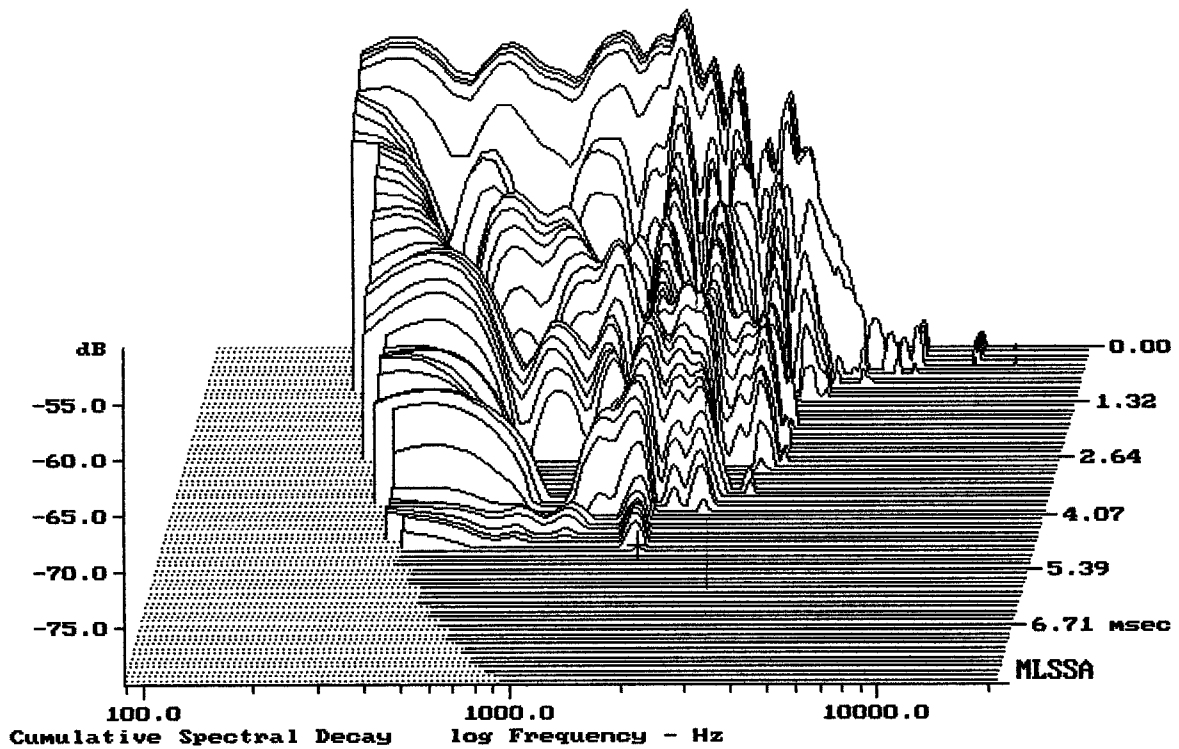


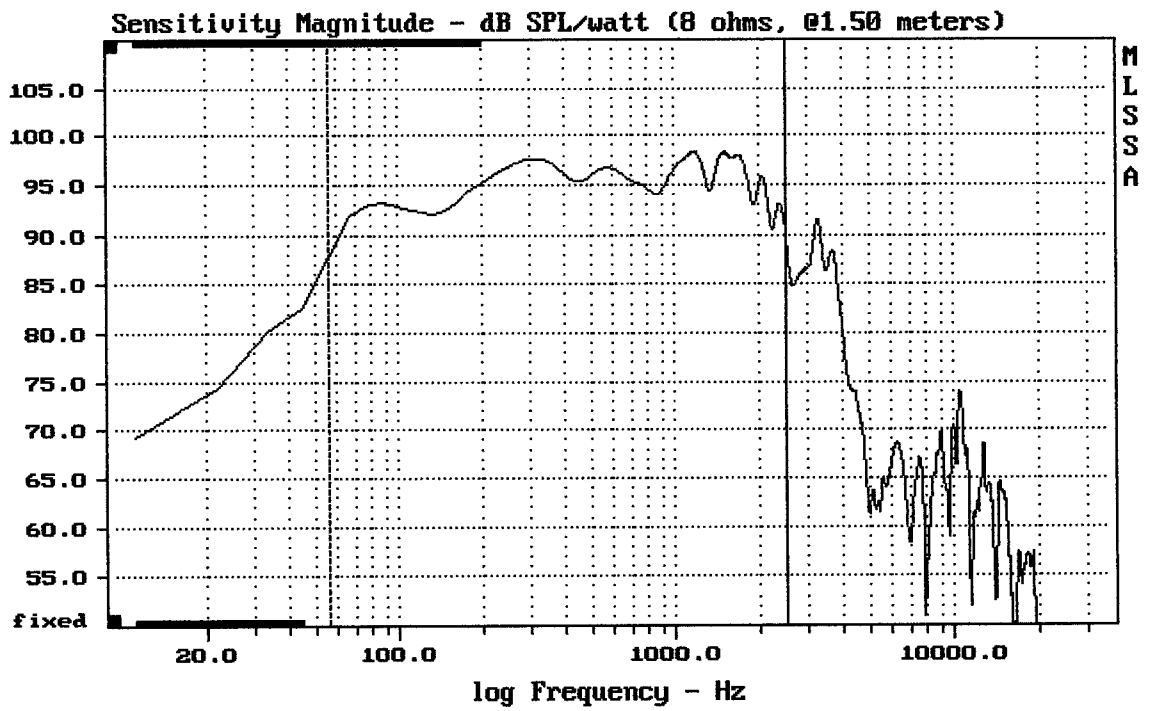
Level (55:2453 Hz) = 95.13 dB SPL/watt (8 ohms, @1.50 meters)

COLOSSUS 18XB

MLSSA: Frequency Domain



-79.42 dB, 1776 Hz (40), 4.950 msec (46)



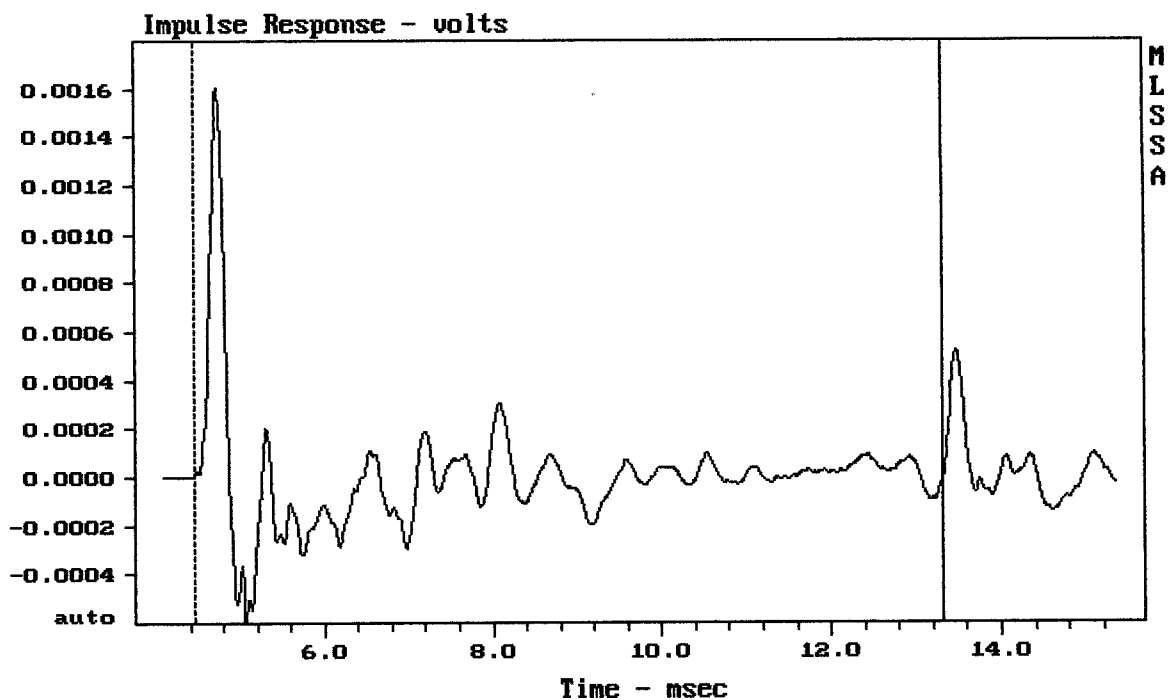

---

Level (55:2508 Hz) = 95.27 dB SPL/watt (8 ohms, @1.50 meters)

---

COLOSSUS 18XB

MLSSA: Frequency Domain




---

mean: -1.768e-006, rms: 0.0002394, std: 0.0002394, max: 0.001605, min: -0.0005

---

COLOSSUS 18XB

Measured Data

QC Limits

| Line | Parameter  | Value  | Units                       |
|------|------------|--------|-----------------------------|
| 1    | RMSE-free  | 1.30   | Ohms                        |
| 2    | Fs         | 44.43  | Hz                          |
| 3    | Re         | 6.66   | Ohms[dc]                    |
| 4    | Res        | 121.98 | Ohms                        |
| 5    | Qms        | 10.65  |                             |
| 6    | Qes        | 0.58   |                             |
| 7    | Qts        | 0.55   |                             |
| 8    | L1         | 1.08   | mH                          |
| 9    | L2         | 1.71   | mH                          |
| 10   | R2         | 6.90   | Ohms                        |
| 11   | RMSE-load  | 0.80   | Ohms                        |
| 12   | Vas(Sd)    | 155.05 | liters                      |
| 13   | Mms        | 157.55 | grams                       |
| 14   | Cms        | 81     | $\mu\text{M}/\text{Newton}$ |
| 15   | B1         | 22.45  | Tesla-M                     |
| 16   | SPLref(Sd) | 95.5   | dB[Re]                      |
| 17   | Rub-index  | 0.04   |                             |

Method: Mass-loaded (140.00 grams)

Area (Sd): 1164.16 sq cm

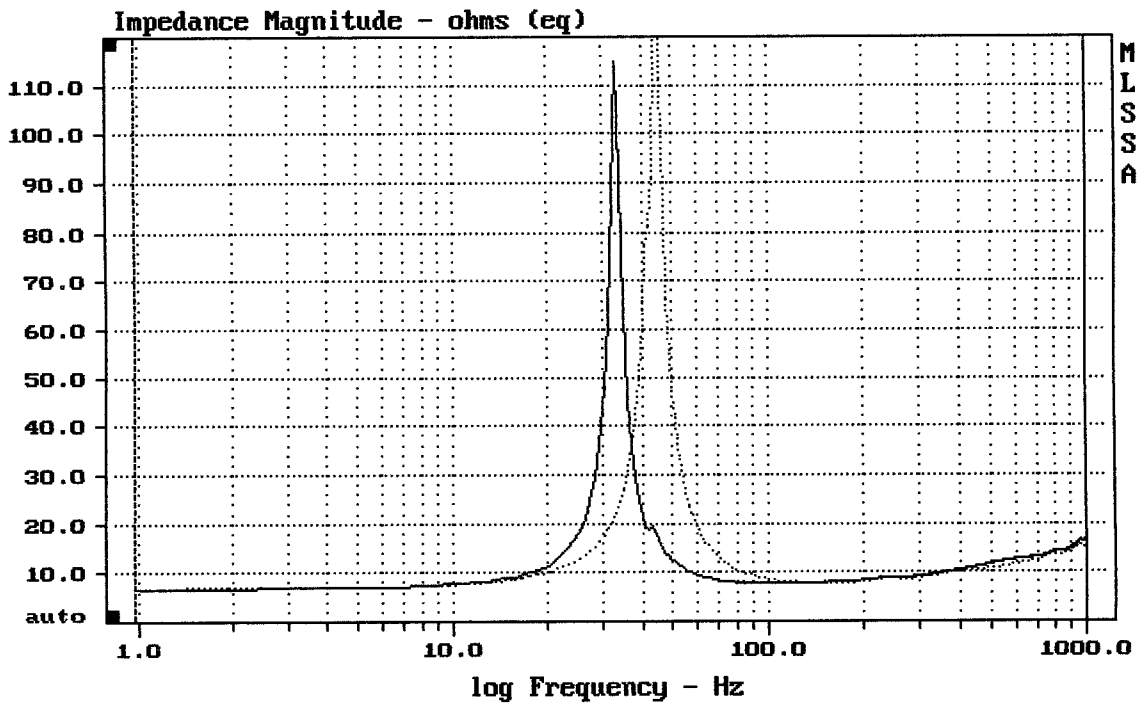
DCR mode: Measure (-0.08 ohms)

QC file: CLOSED

Analysis successful. Shift in Fs = -25.4% (-20% to -50% is recommended).

COLOSSUS 18XB

MLSSA: Parameters



mean: 12.47, rms: 15.23, std: 8.743, max: 133.5, min: 6.682

MLSSA: Frequency Domain