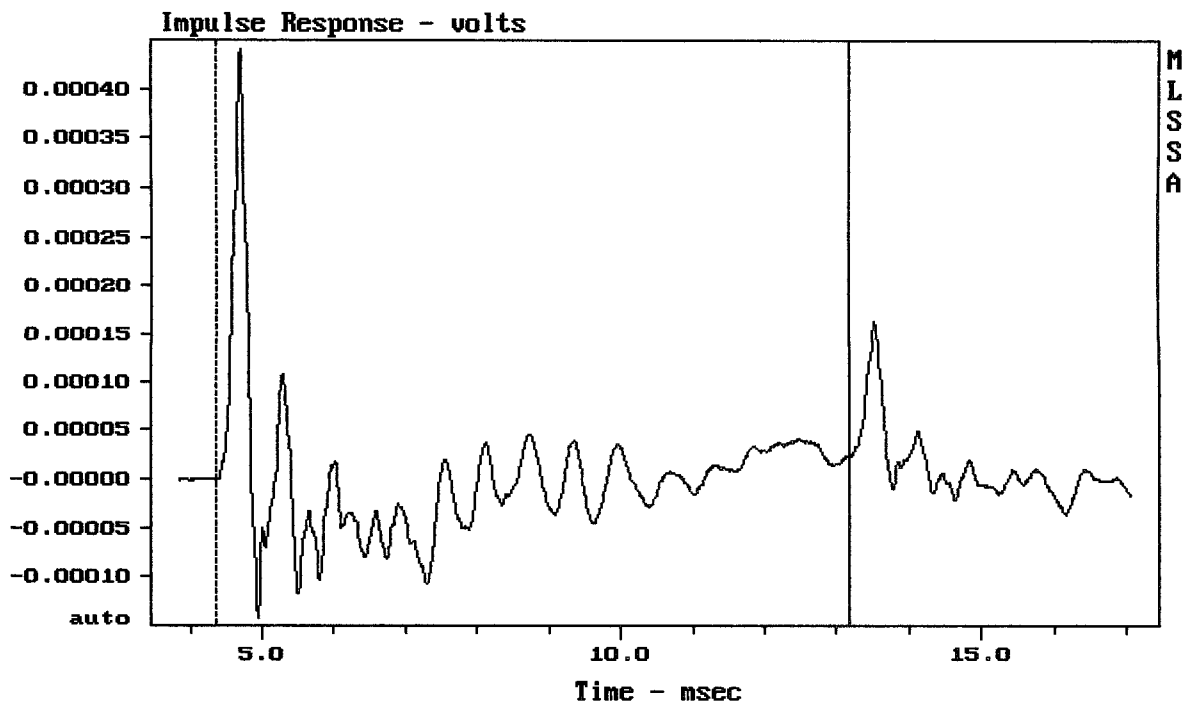


Level (55:300 Hz) = 91.33 dB SPL/watt (8 ohms, @1.50 meters)

FANE COL18-1500

12-27-91 3:25 PM

MLSSA: Frequency Domain



mean: -3.114e-007, rms: 6.628e-005, std: 6.628e-005, max: 0.0004396, min: -0.0

FANE COL18-1500

Measured Data

QC Limits

Line	Parameter	Value	Units
1	RMSE-free	1.72	Ohms
2	Fs	51.78	Hz
3	Re	5.32	Ohms[dc]
4	Res	209.46	Ohms
5	Qms	19.30	
6	Qes	0.49	
7	Qts	0.48	
8	L1	3.65	mH
9	L2	6.37	mH
10	R2	23.43	Ohms
11	RMSE-load	1.93	Ohms
12	Vas(Sd)	66.88	liters
13	Mms	268.84	grams
14	Cms	35	$\mu\text{M}/\text{Newton}$
15	B1	30.81	Tesla-M
16	SPLref(Sd)	94.6	dB[Re]
17	Rub-index	0.05	

Method: Mass-loaded (140.00 grams)

Area (Sd): 1164.16 sq cm

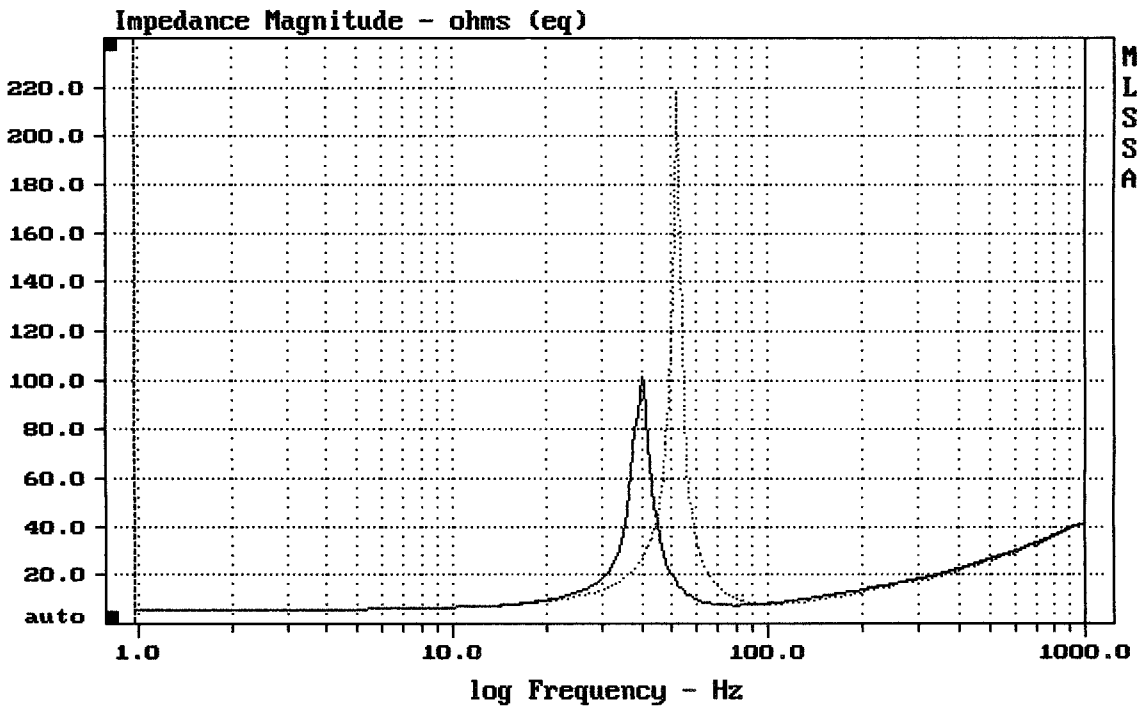
DCR mode: Measure (-0.07 ohms)

QC file: CLOSED

Analysis successful. Shift in Fs = -22.8% (-20% to -50% is recommended).

FANE COL18-1500

MLSSA: Parameters



mean: 26.5, rms: 30.25, std: 14.6, max: 218.1, min: 5.304

MLSSA: Frequency Domain