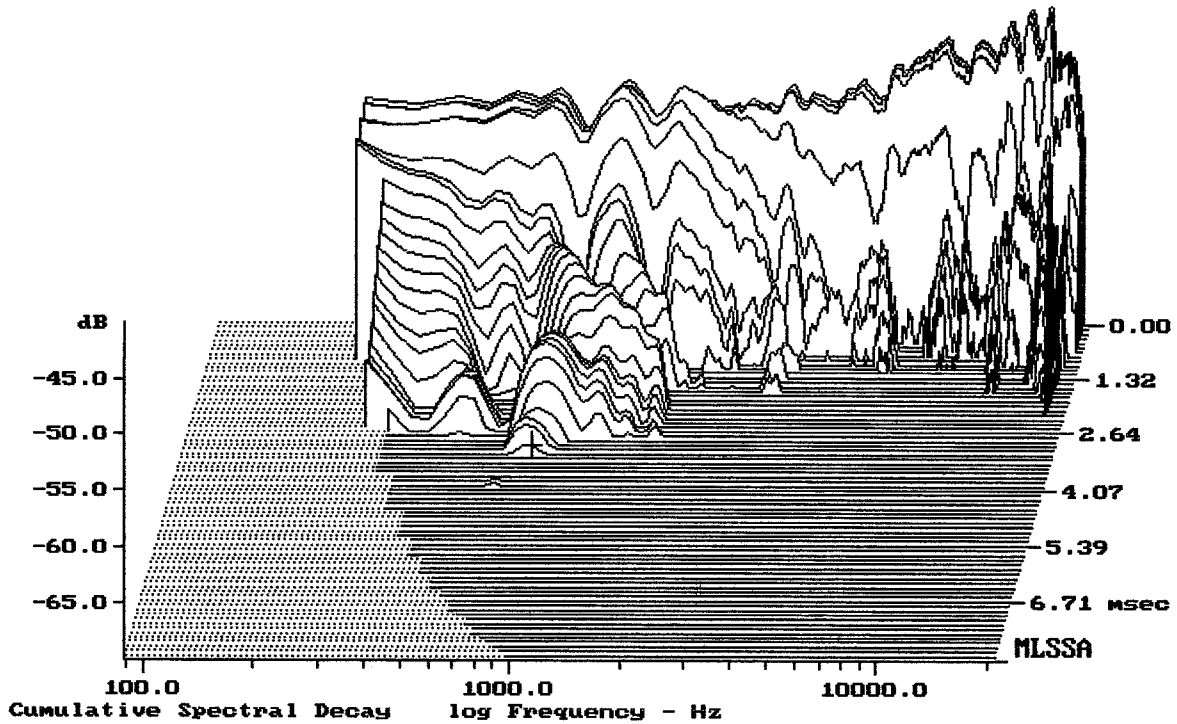


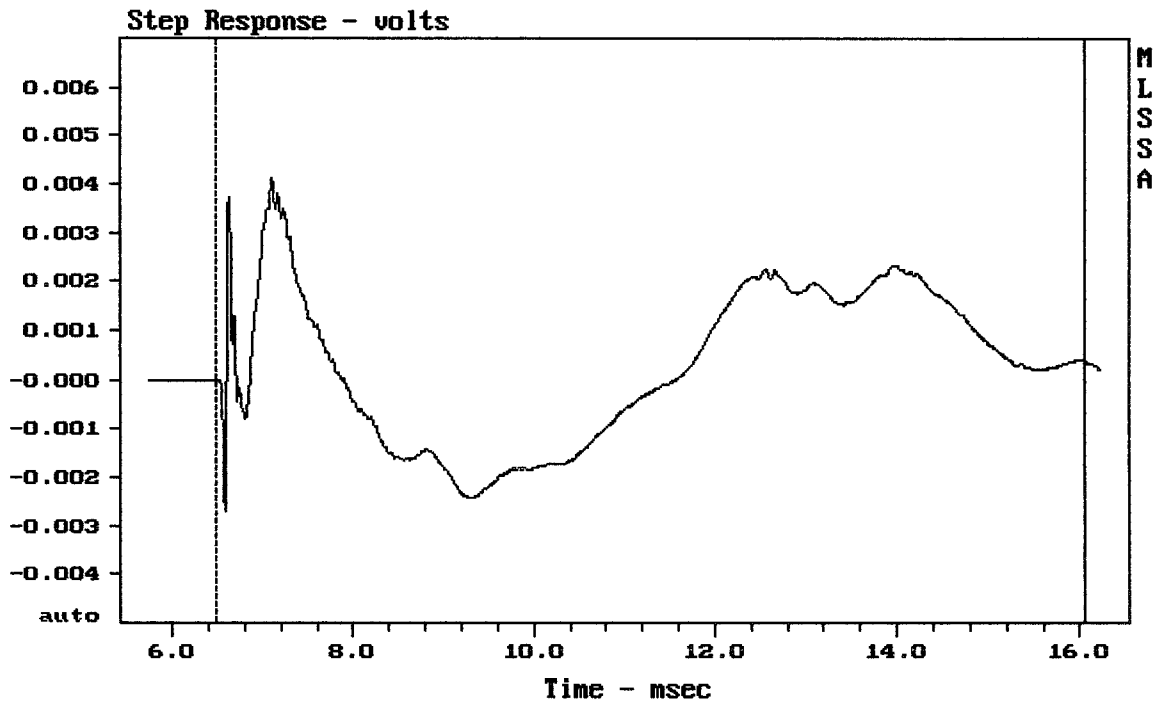
mean: 101.25, rms: 101.61, std: 2.25, max: 106.02, min: 93.34

ART415-A MK II

MLSSA: Frequency Domain



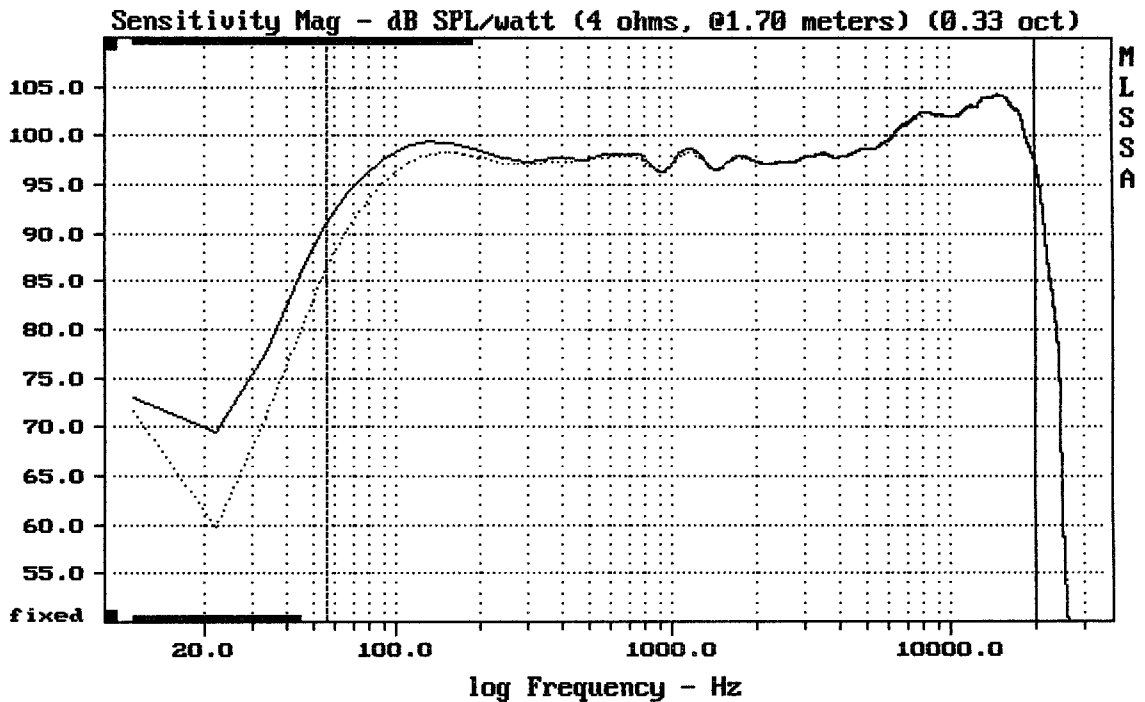
-69.25 dB, 799 Hz (18), 3.190 msec (30)



mean: 0.0003021, rms: 0.001591, std: 0.001562, max: 0.004116, min: -0.002687

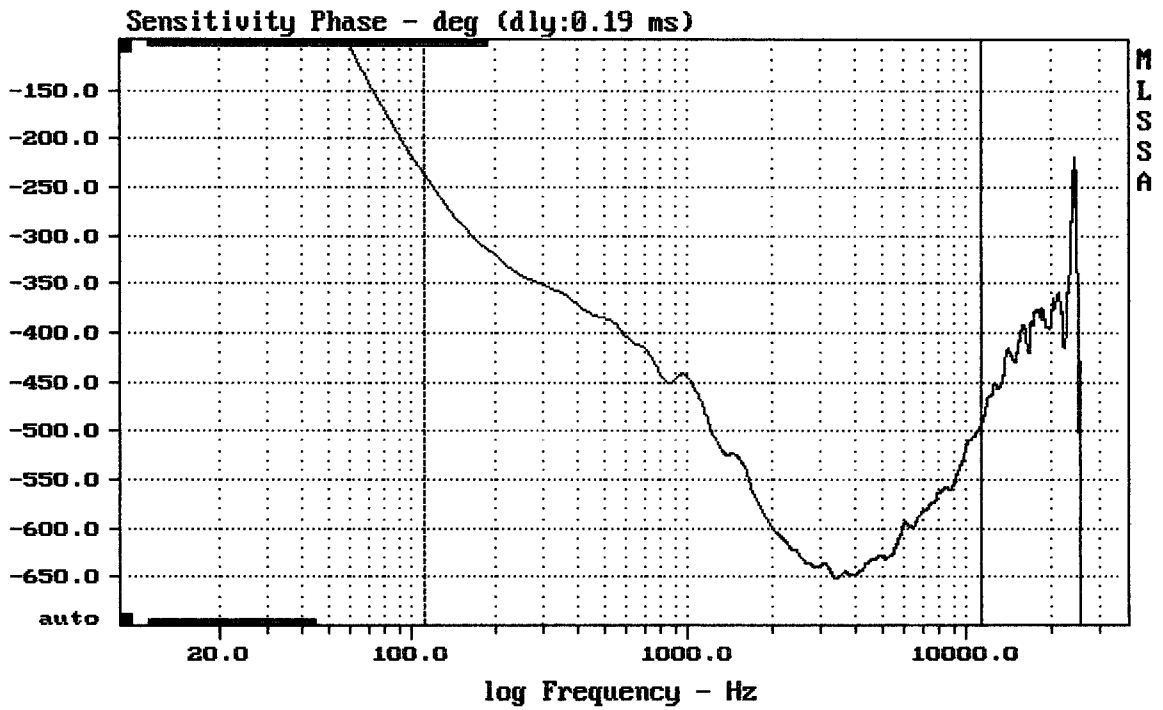
ART415-A MK II

MLSSA: Time Domain



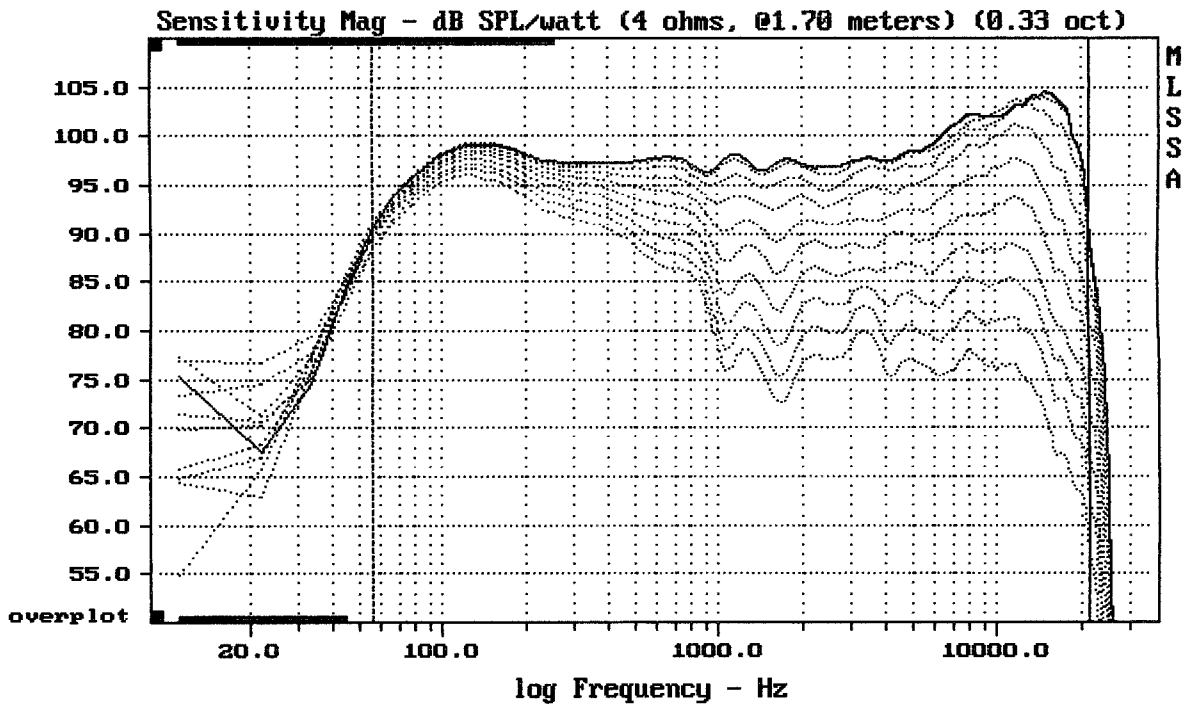
Overlay Compare: dev= +4.4/-0.18, std= 0.19, avg= 0.075

ART415-A MK II

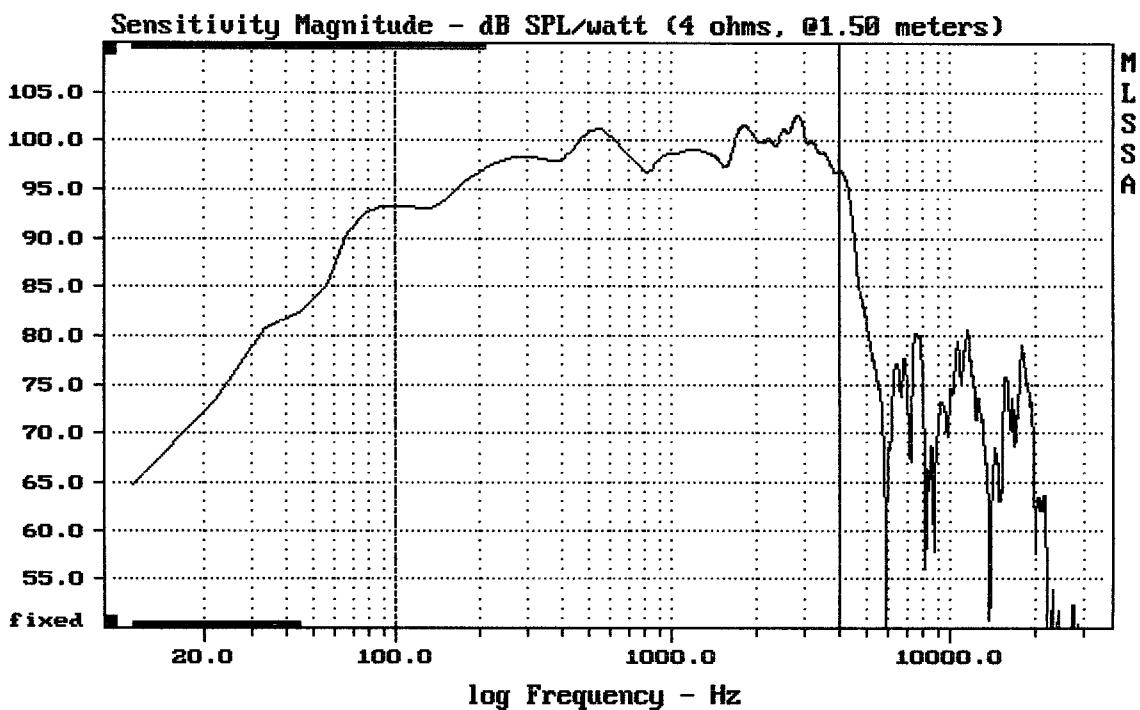


ART415-A MK II

MLSSA: Frequency Domain



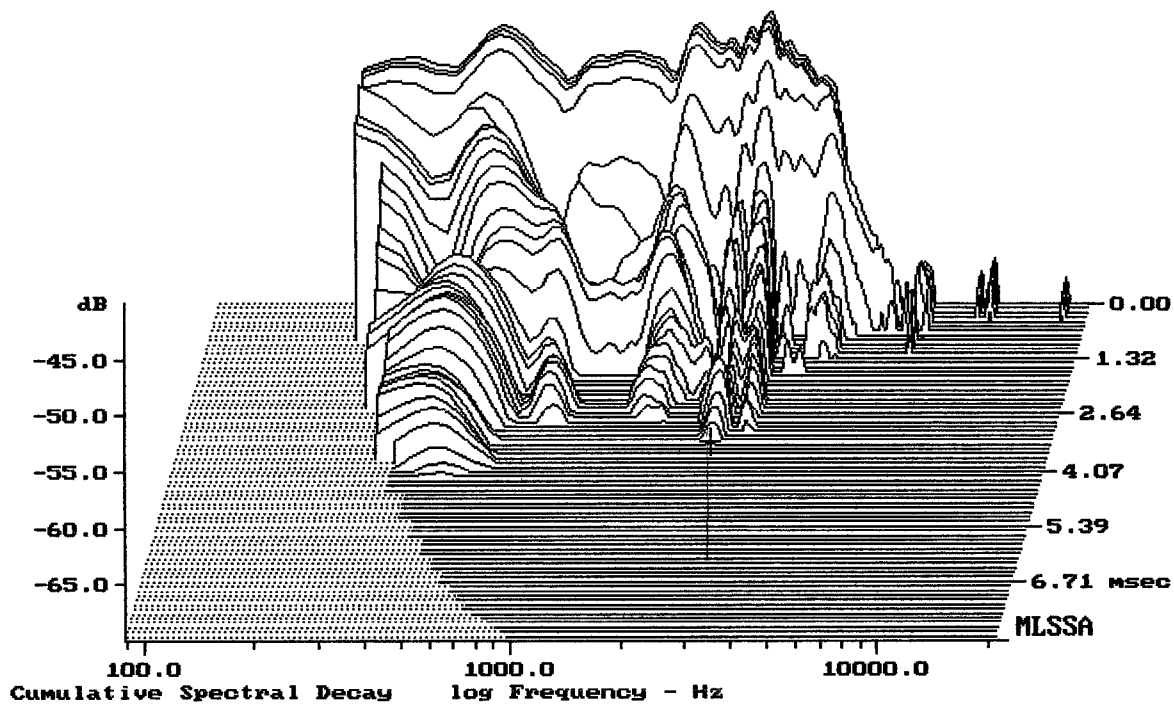
ART415-A MK II



Level (100:4006 Hz) = 98.63 dB SPL/watt (4 ohms, @1.50 meters)

15" from ART415-A MK II

MLSSA: Frequency Domain



-69.73 dB, 2486 Hz (56), 3.410 msec (32)

MLSSA SPO 4.0D #960903-3057-3075

Measured Data

QC Limits

Line	Parameter	Value	Units
1	RMSE-free	0.41	Ohms
2	Fs	47.43	Hz
3	Re	3.56	Ohms[dc]
4	Res	66.96	Ohms
5	Qms	7.71	
6	Qes	0.41	
7	Qts	0.39	
8	L1	0.32	mH
9	L2	0.82	mH
10	R2	4.60	Ohms
11	RMSE-load	0.24	Ohms
12	Vas(Sd)	197.73	liters
13	Mms	58.50	grams
14	Cms	192	μ M/Newton
15	B1	12.31	Tesla-M
16	SPLref(Sd)	98.9	dB[Re]
17	Rub-index	0.00	

Method: Mass-loaded (80.00 grams)

Area (Sd): 855.30 sq cm

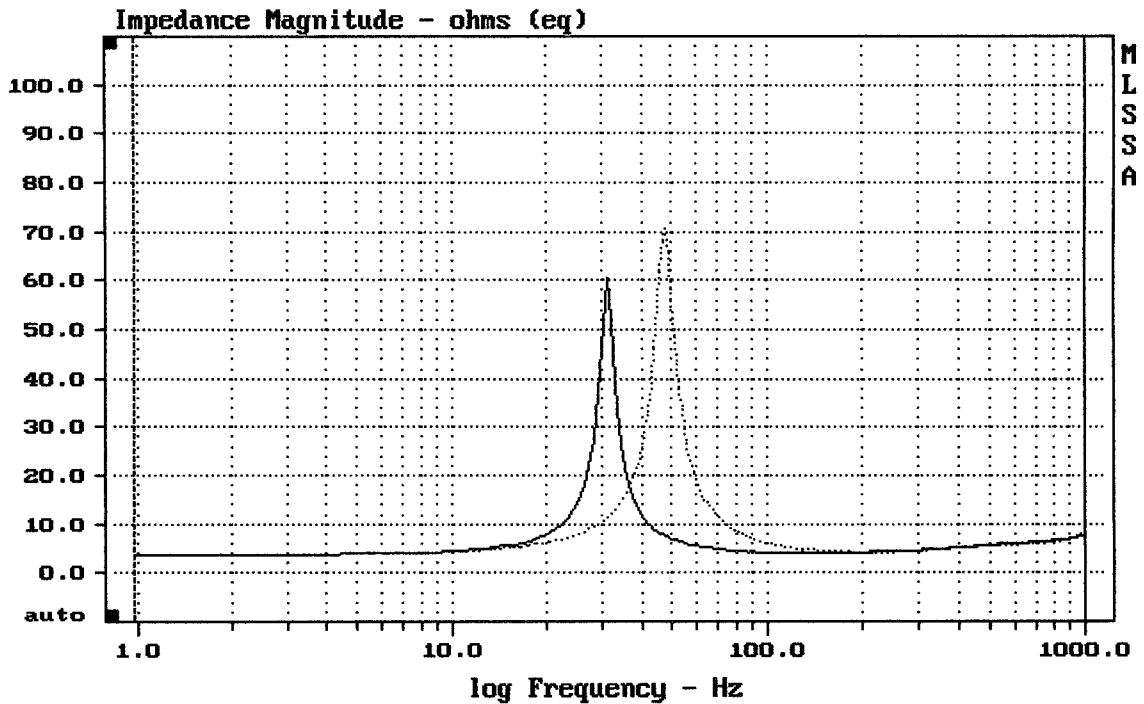
DCR mode: Measure (-0.07 ohms)

QC file: CLOSED

Analysis successful. Shift in Fs = -34.1% (-20% to -50% is recommended).

15" ART415-A MK II

MLSSA: Parameters



mean: 6.627, rms: 8.76, std: 5.728, max: 70.75, min: 3.587

MLSSA: Frequency Domain