

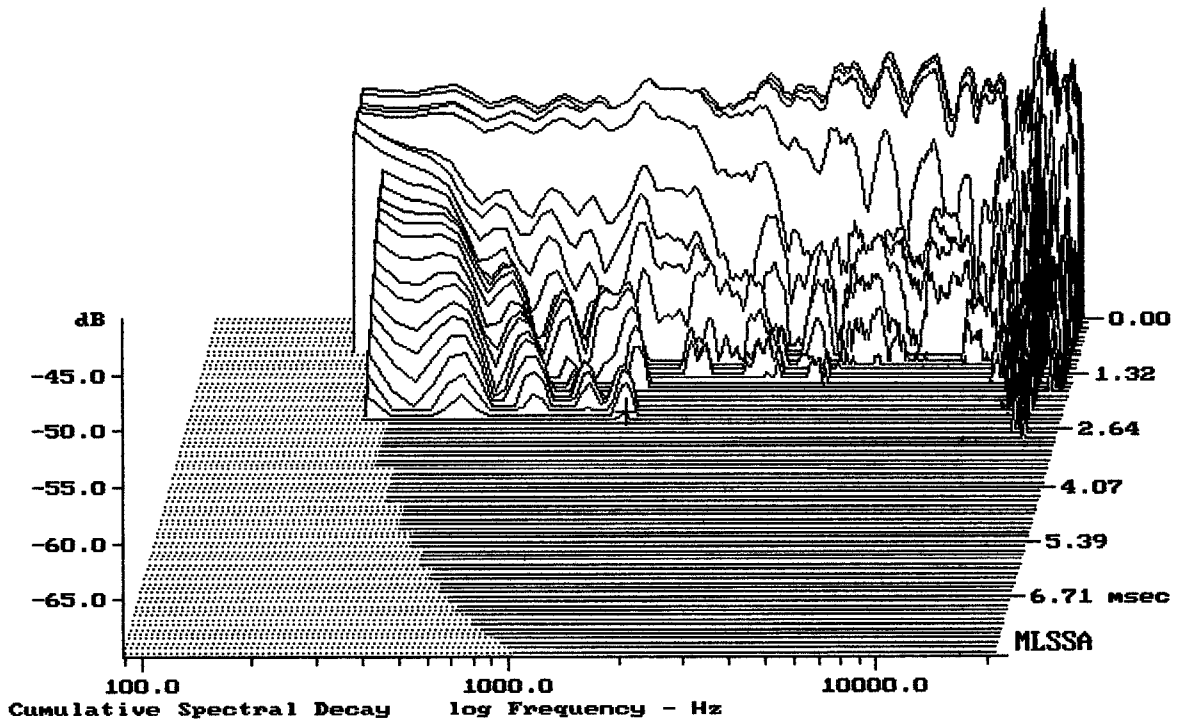
---

mean: 98.38, rms: 98.70, std: 2.12, max: 104.97, min: 84.97

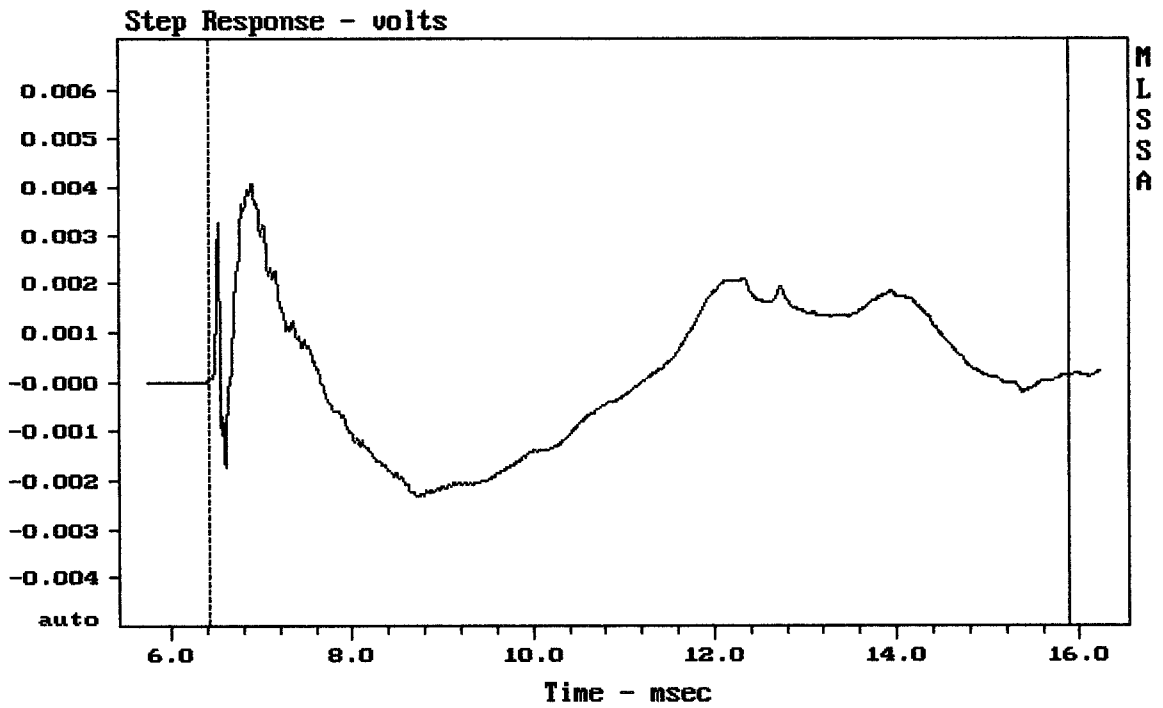
---

ART422-A MK II

MLSSA: Frequency Domain



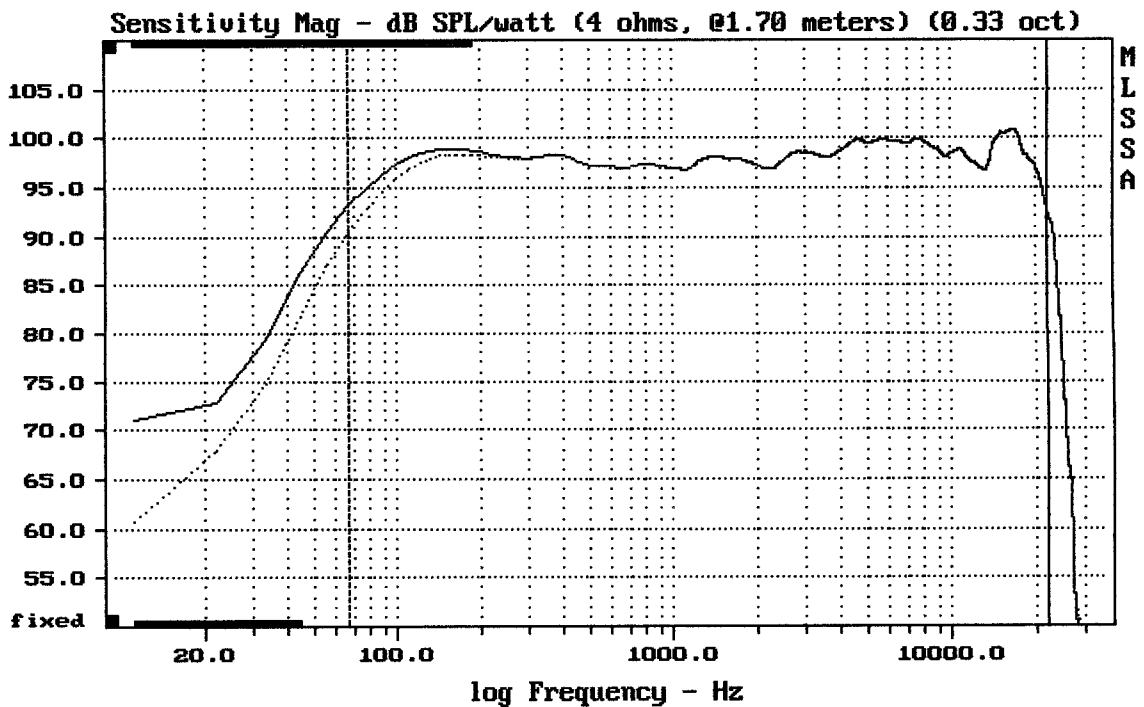
-69.39 dB, 1376 Hz (31), 2.420 msec (23)



mean: 0.0002073, rms: 0.001497, std: 0.001482, max: 0.004087, min: -0.002318

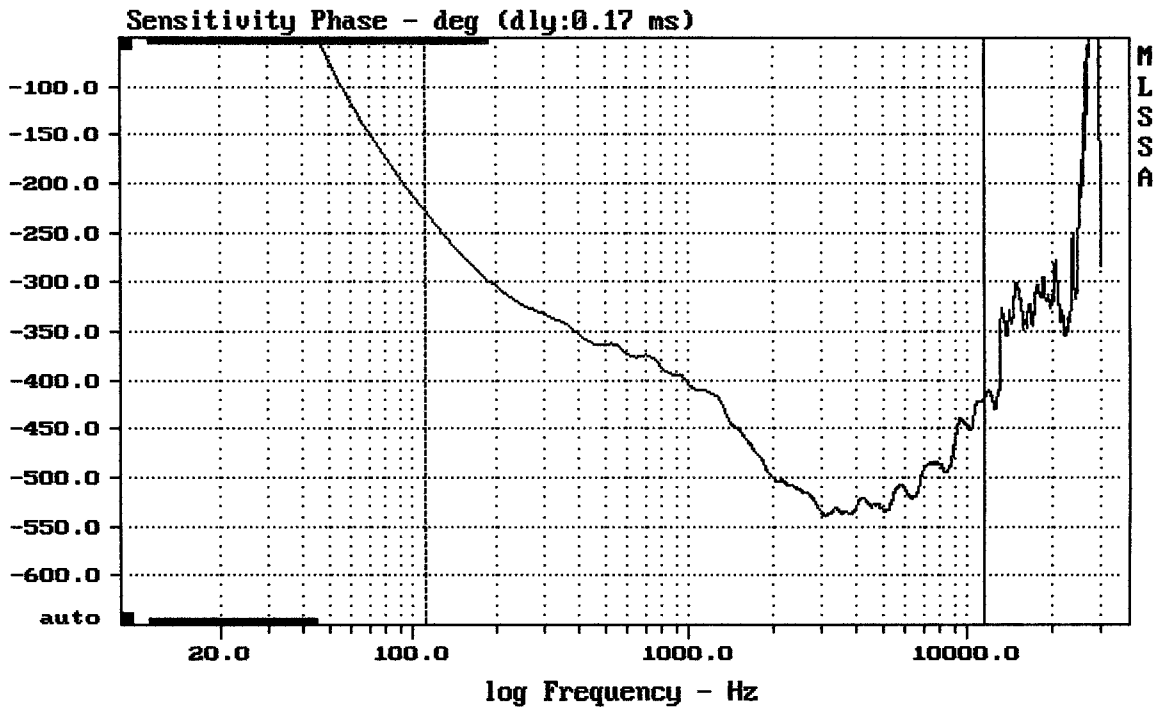
ART422-A MK II

MLSSA: Time Domain



Overlay Compare: dev= +2.8/-0.04, std= 0.11, avg= 0.0093

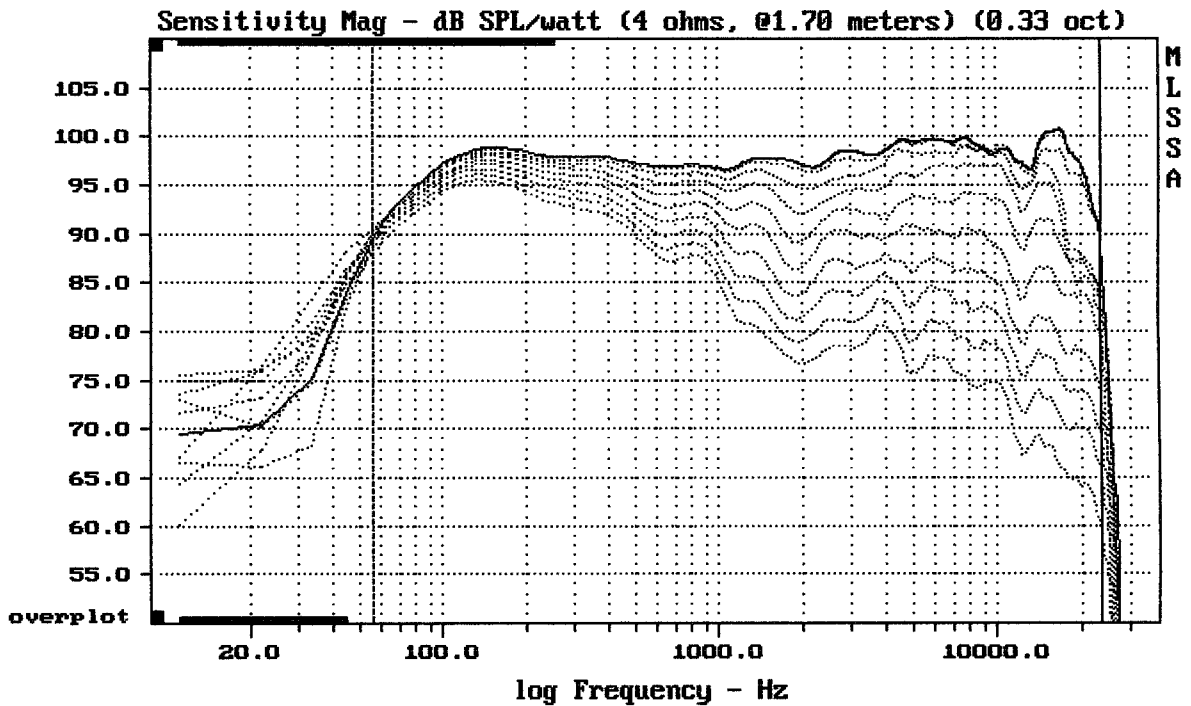
ART422-A MK II



mean: -478, rms: 480.8, std: 52.12, max: -227.8, min: -539.3

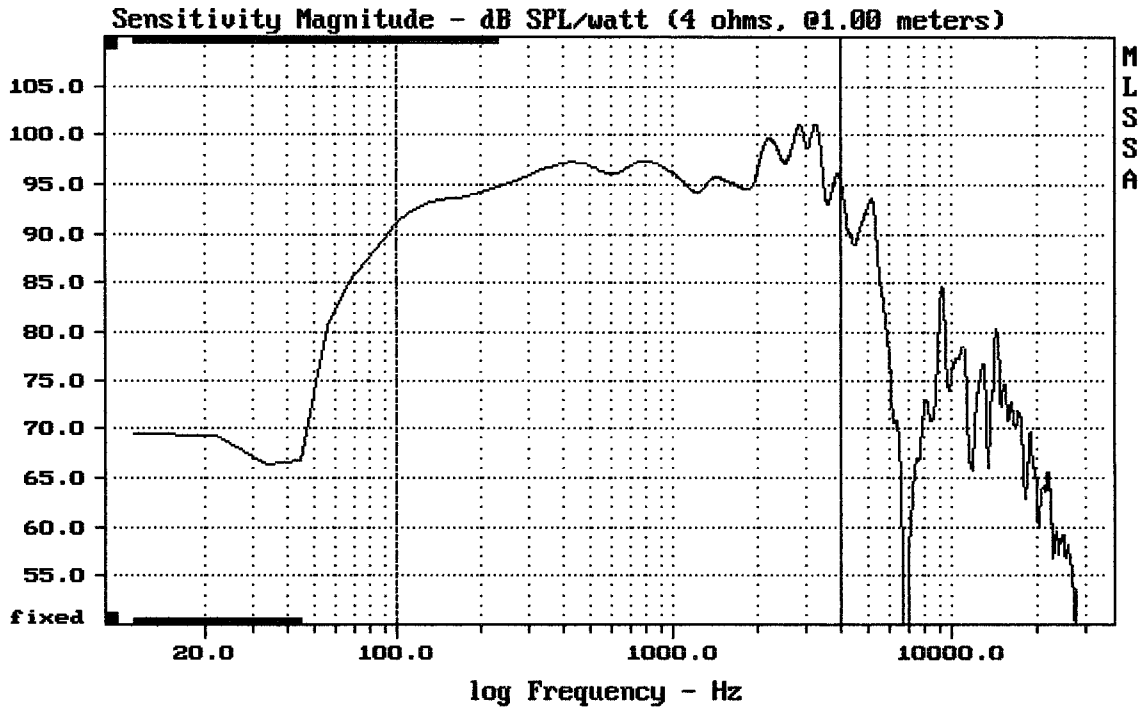
ART422-A MK II

MLSSA: Frequency Domain



Overlay Compare: dev= +25/-8.4, std= 6.4, avg= -26

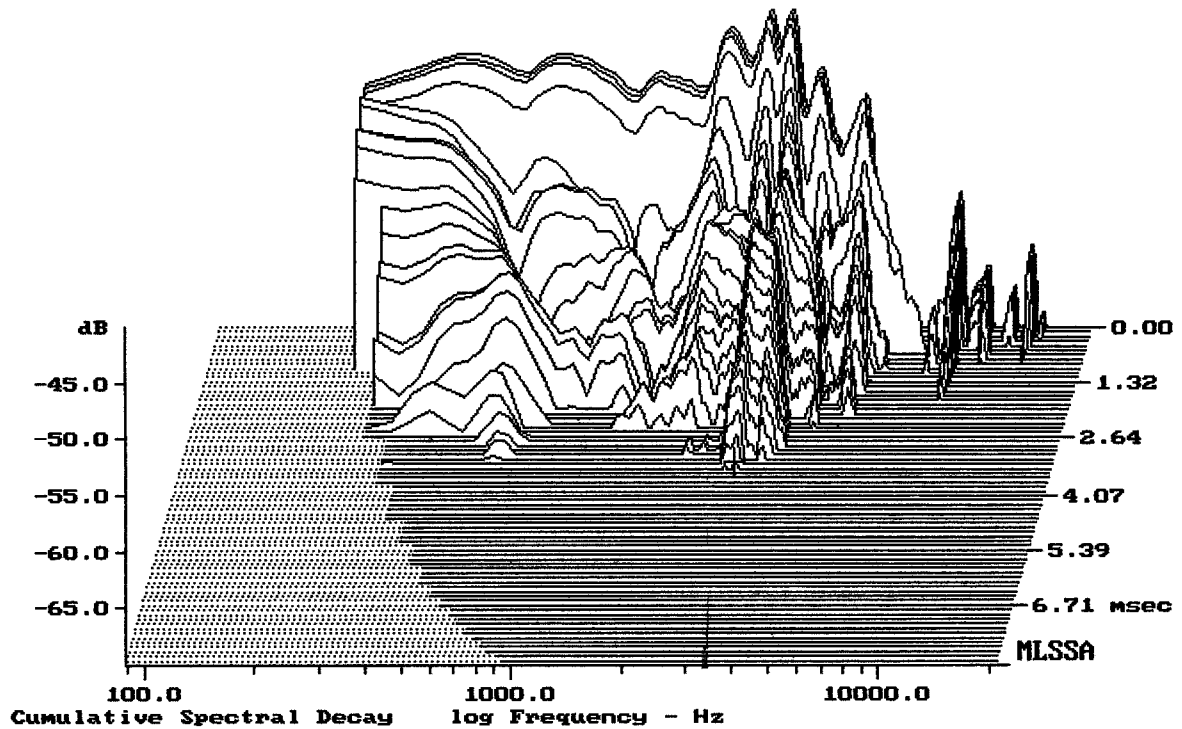
ART422-A MK II



Level (100:4006 Hz) = 96.28 dB SPL/watt (4 ohms, @1.00 meters)

12" FROM ART422-A MK II

MLSSA: Frequency Domain



-69.40 dB, 2885 Hz (65), 3.410 msec (32)

MLSSA SPO 4.0D #960903-3057-3075

Measured Data

QC Limits

Line	Parameter	Value	Units
1	RMSE-free	0.34	Ohms
2	Fs	64.82	Hz
3	Re	2.78	Ohms[dc]
4	Res	54.75	Ohms
5	Qms	6.82	
6	Qes	0.35	
7	Qts	0.33	
8	L1	0.51	mH
9	L2	0.88	mH
10	R2	2.58	Ohms
11	RMSE-load	0.18	Ohms
12	Vas(Sd)	55.62	liters
13	Mms	42.91	grams
14	Cms	140	$\mu$ M/Newton
15	B1	11.85	Tesla-M
16	SPLref(Sd)	98.2	dB[Re]
17	Rub-index	0.00	

Method: Mass-loaded (80.00 grams)

Area (Sd): 530.93 sq cm

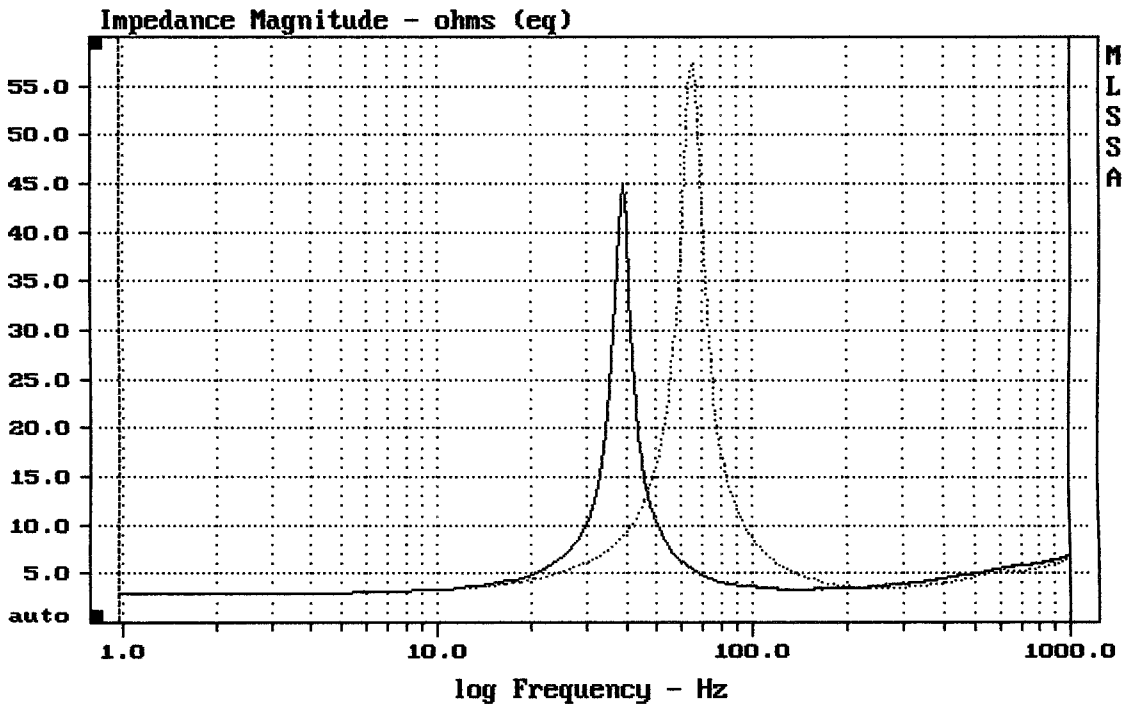
DCR mode: Measure (-0.08 ohms)

QC file: CLOSED

Analysis successful. Shift in Fs = -39.8% (-20% to -50% is recommended).

12" FROM ART422-A MK II

MLSSA: Parameters



mean: 6.005, rms: 8.241, std: 5.644, max: 57.34, min: 2.838

MLSSA: Frequency Domain