

Sestava Eminence DELTALITE-II 2510 + Selenium D220Ti 16/Ohm + HM11-25

Osazení:

- Eminence DELTALITE-II 2510

<http://eshop.prodance.cz/deltaliteii-2510/d-90814/>

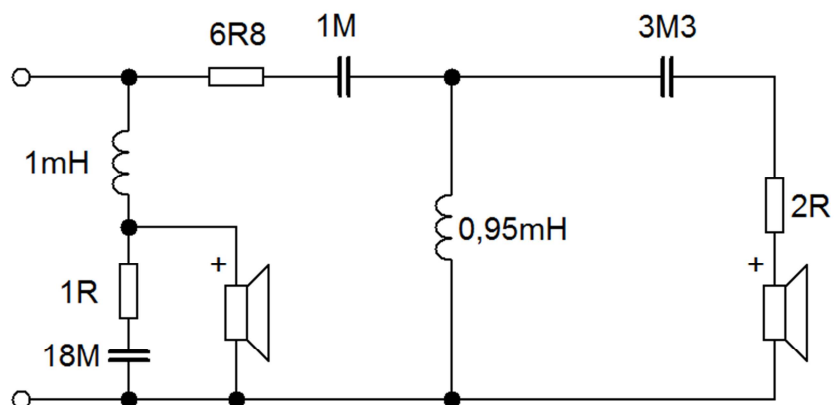
- Selenium D220Ti 16/Ohm

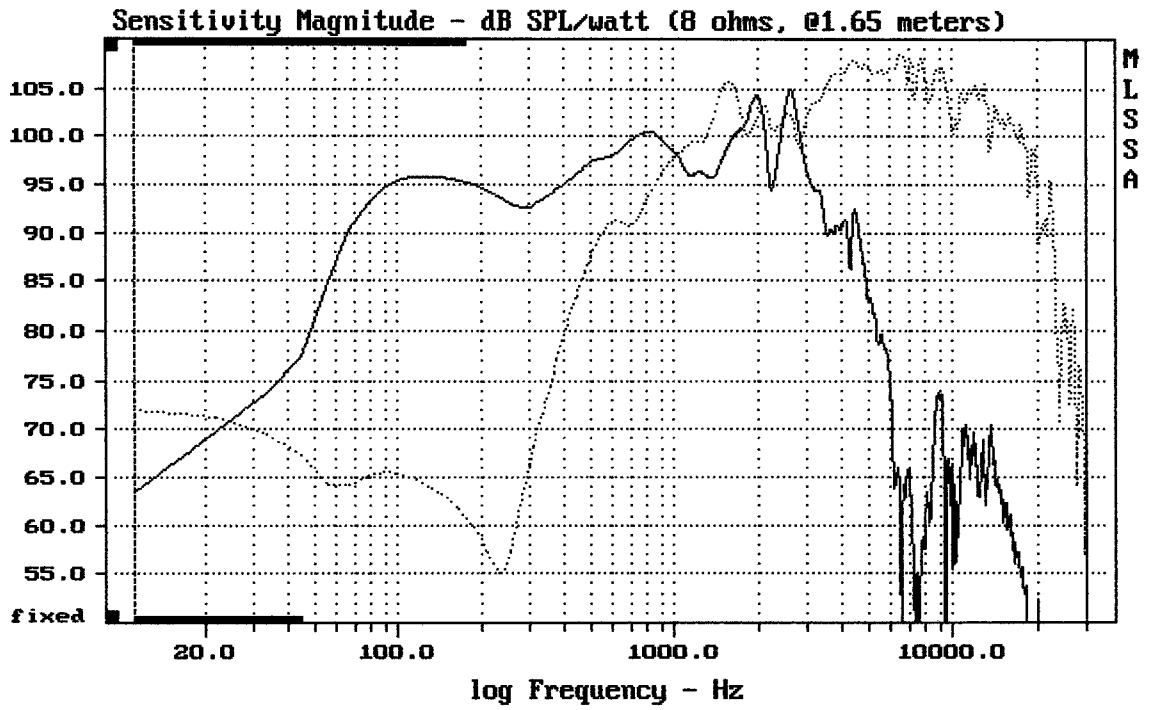
<http://eshop.prodance.cz/d220ti-16-ohm/d-90766/>

- Selenium HM11-25

<http://eshop.prodance.cz/hm1125/d-81671/>

Schéma výhybky:

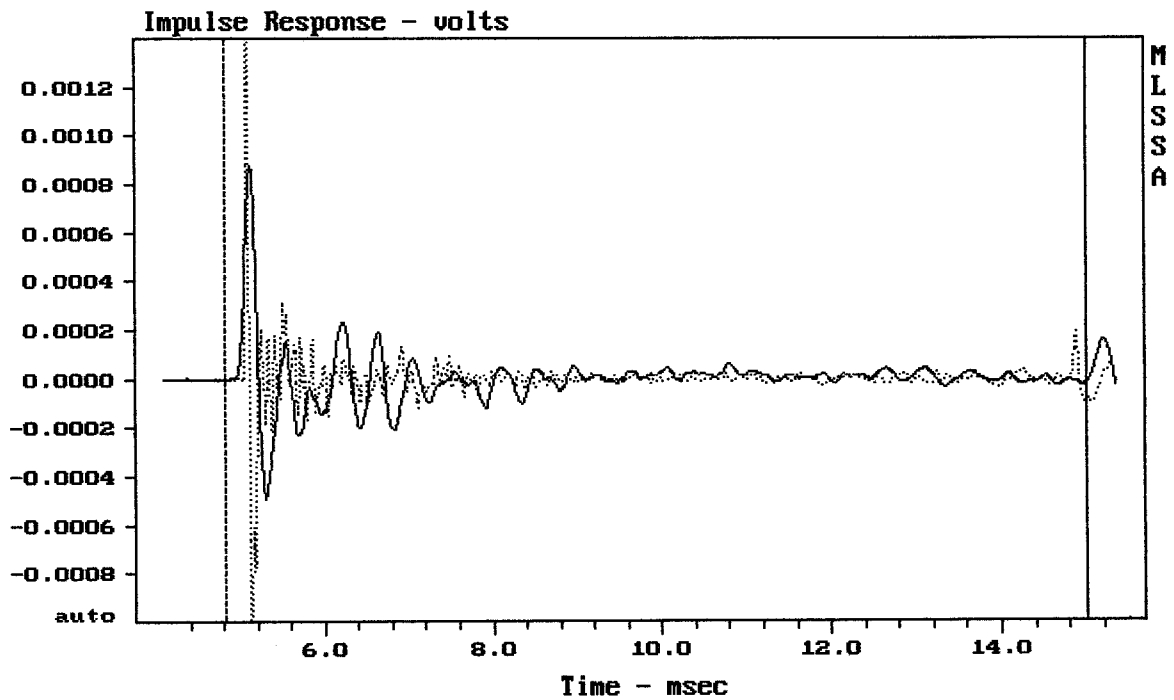




CURSOR: dy = 25.788 x = 30007.1014 (2704)

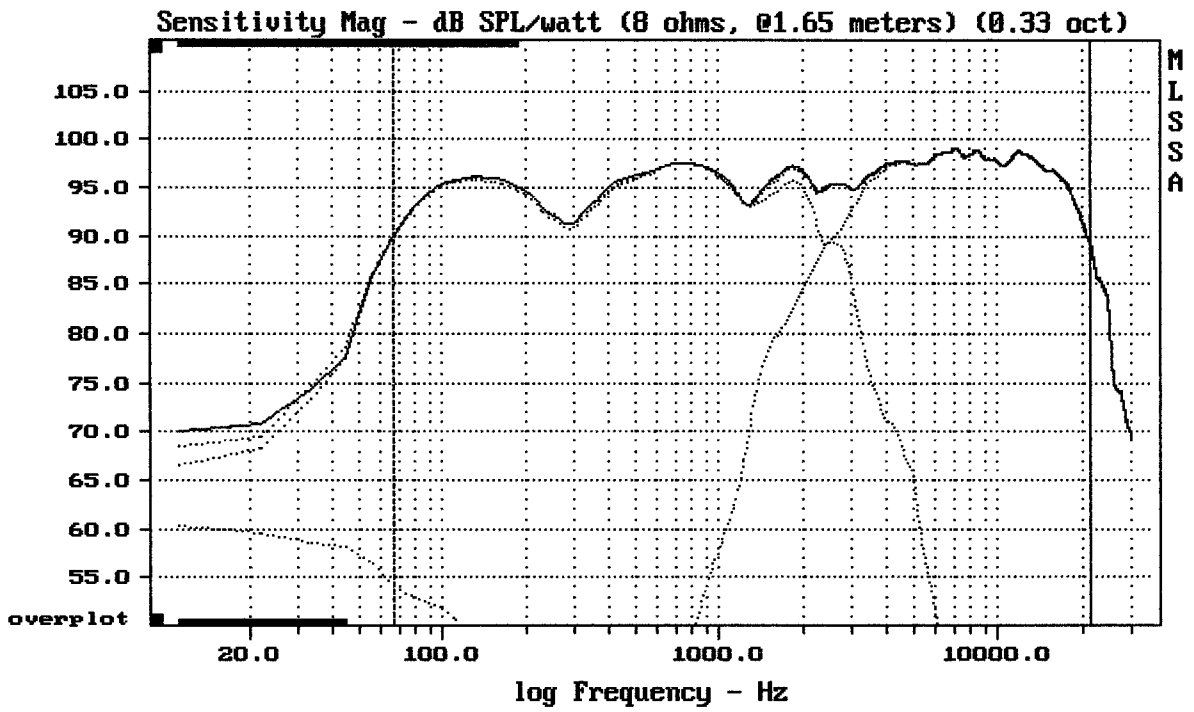
DELTA LITE 2510 II + D220TI-16 + HM11-25

MLSSA: Frequency Domain



mean: 2.199e-007, rms: 0.000154, std: 0.000154, max: 0.002179, min: -0.001907

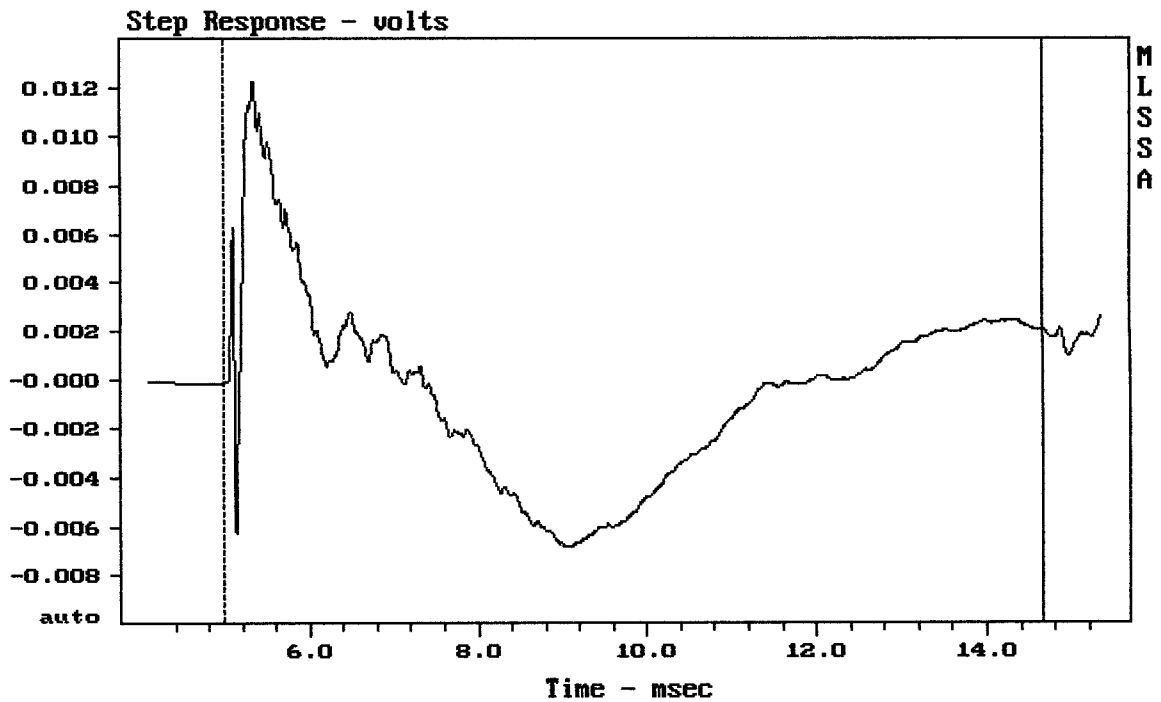
DELTA LITE 2510 II + D220TI-16 + HM11-25



mean: 96.64, rms: 96.86, std: 1.80, max: 99.07, min: 89.18

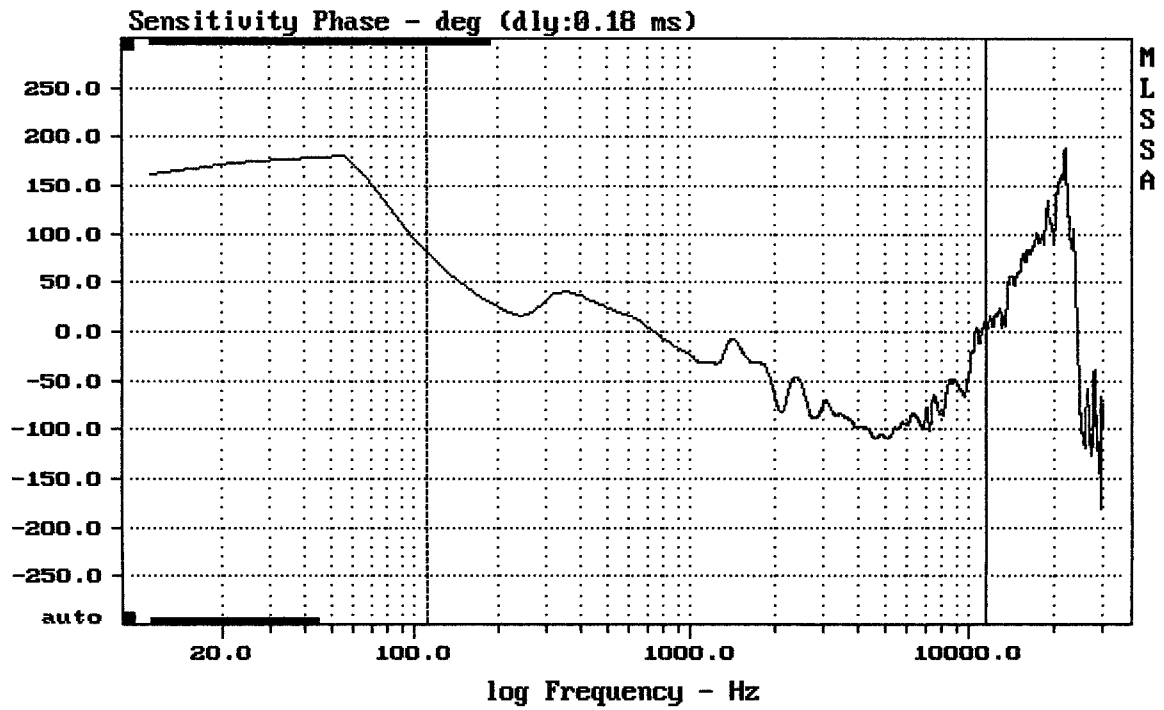
DELTA LITE 2510 II + D220TI-16 + HM11-25

MLSSA: Frequency Domain



mean: -0.0004349, rms: 0.003852, std: 0.003828, max: 0.01222, min: -0.006809

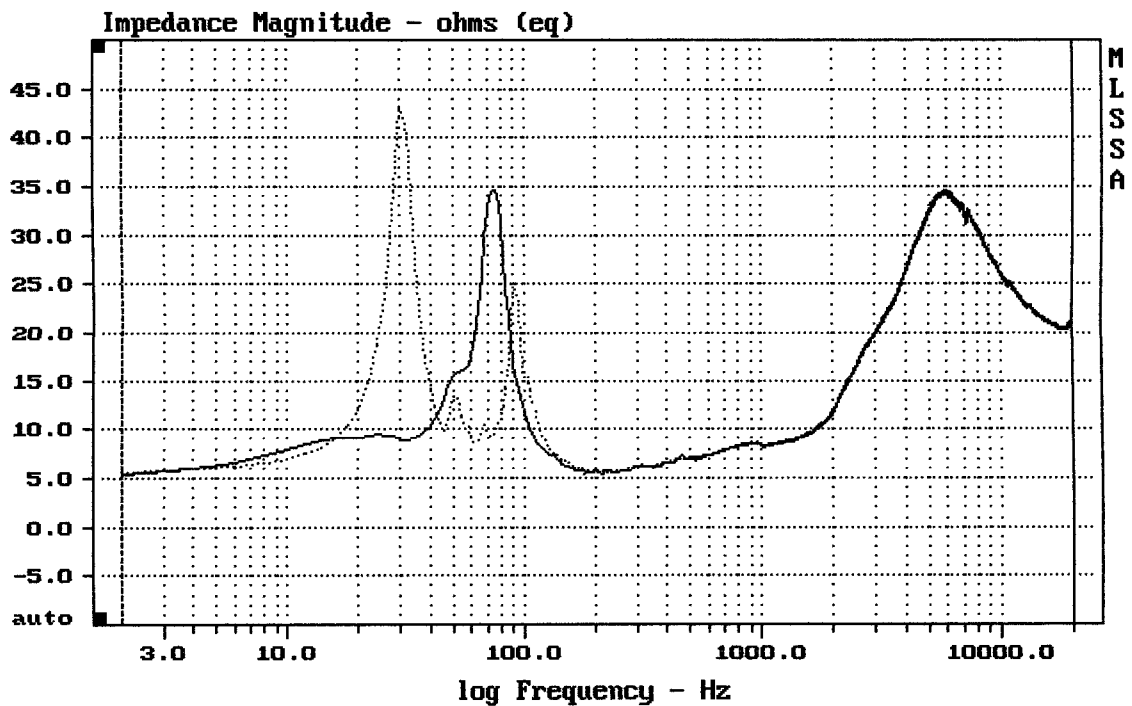
DELTA LITE 2510 II + D220TI-16 + HM11-25



mean: -59.28, rms: 70.73, std: 38.57, max: 81.32, min: -108.8

DELTA LITE 2510 II + D220TI-16 + HM11-25

MLSSA: Frequency Domain



mean: 23.16, rms: 24.12, std: 6.725, max: 43.23, min: 5.411

DELTA LITE 2510 II + D220TI-16 + HM11-25