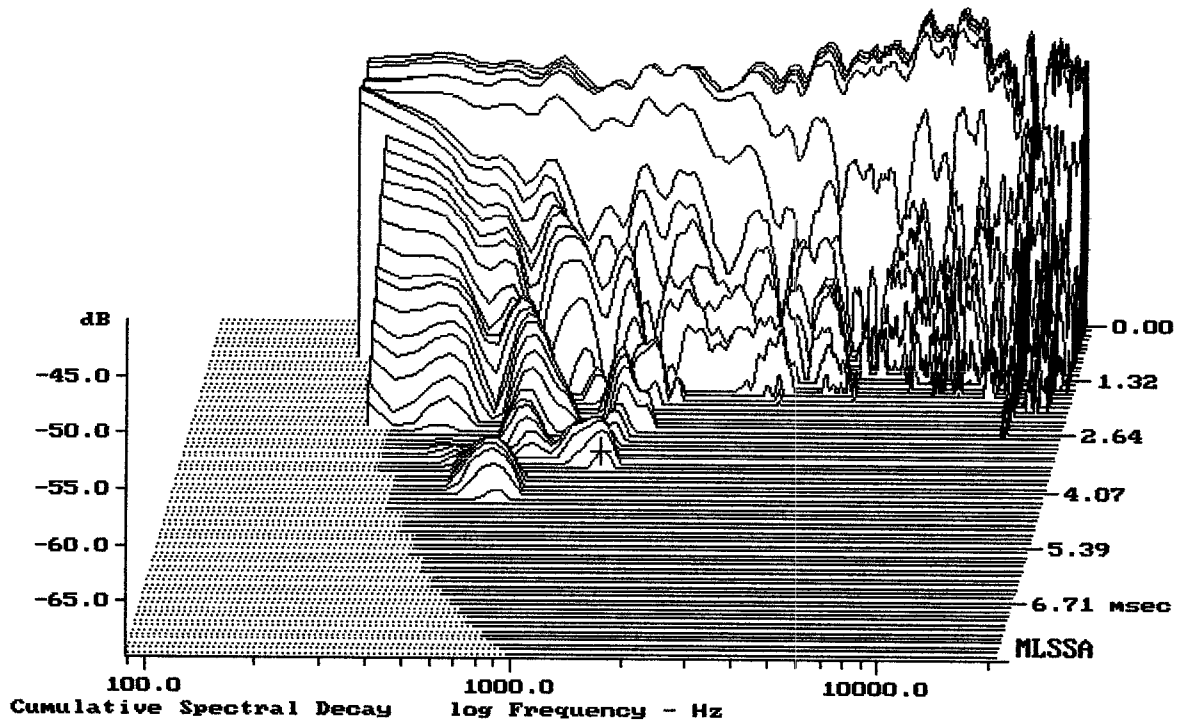


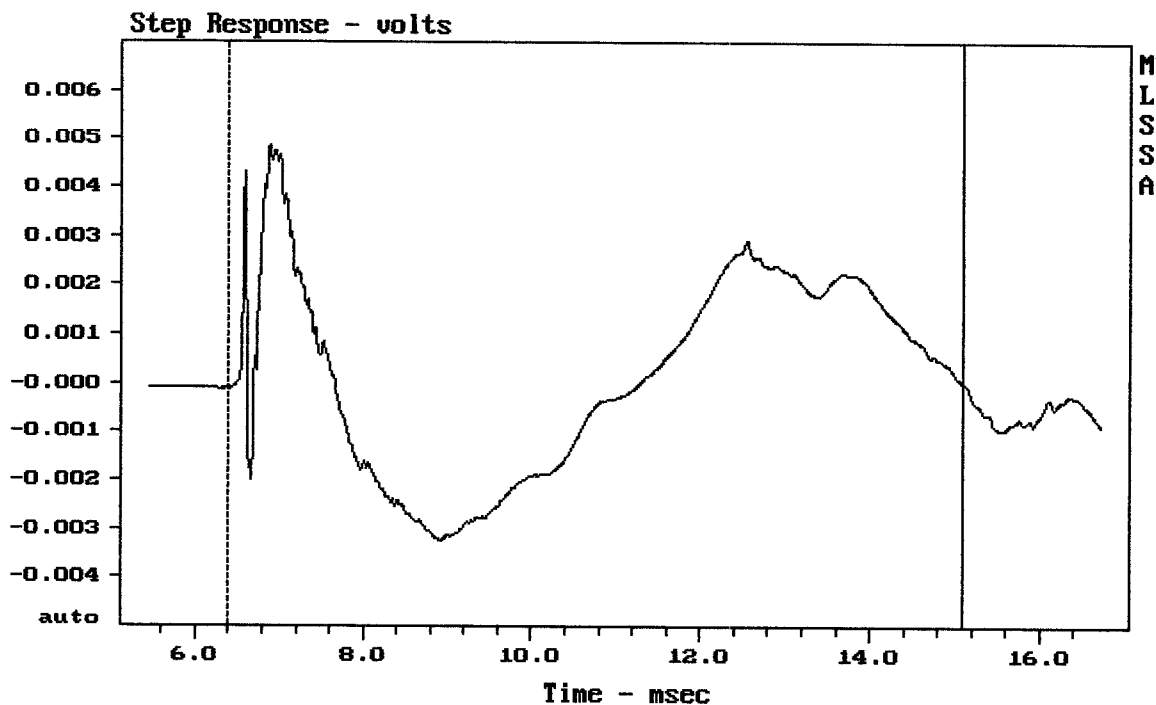
mean: 101.69, rms: 102.00, std: 2.10, max: 106.06, min: 89.86

ART425-A MK II

MLSSA: Frequency Domain



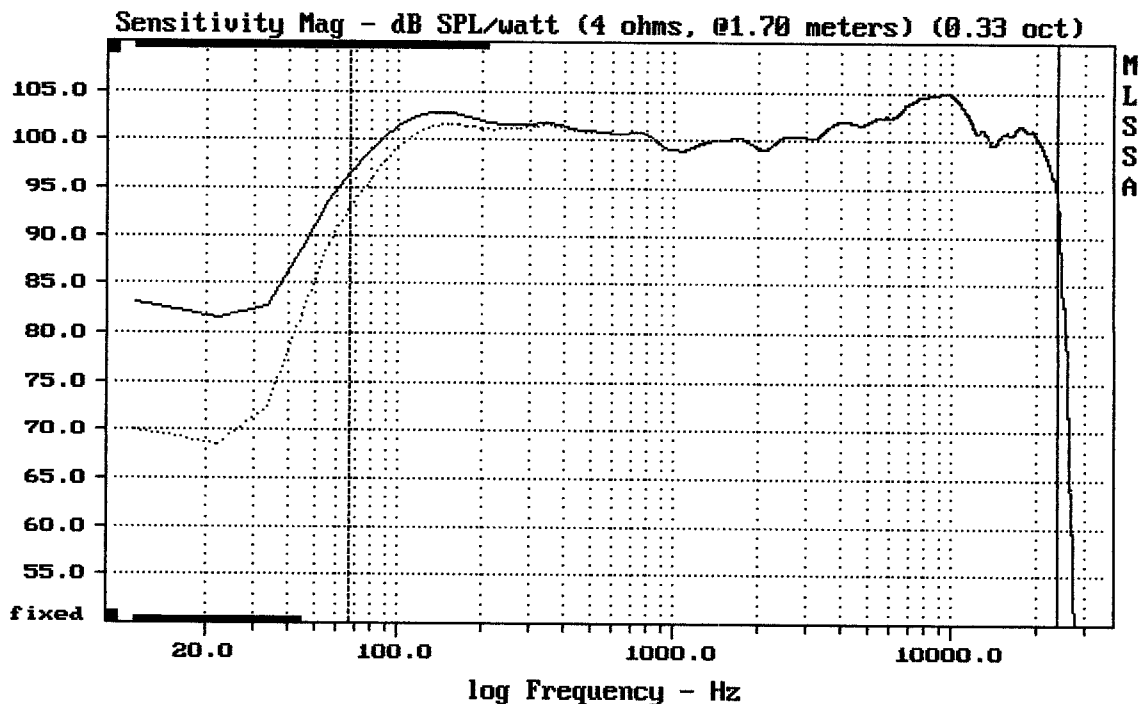
-68.57 dB, 1243 Hz (28), 3.520 msec (33)



mean: 0.0001595, rms: 0.002025, std: 0.002019, max: 0.004845, min: -0.003247

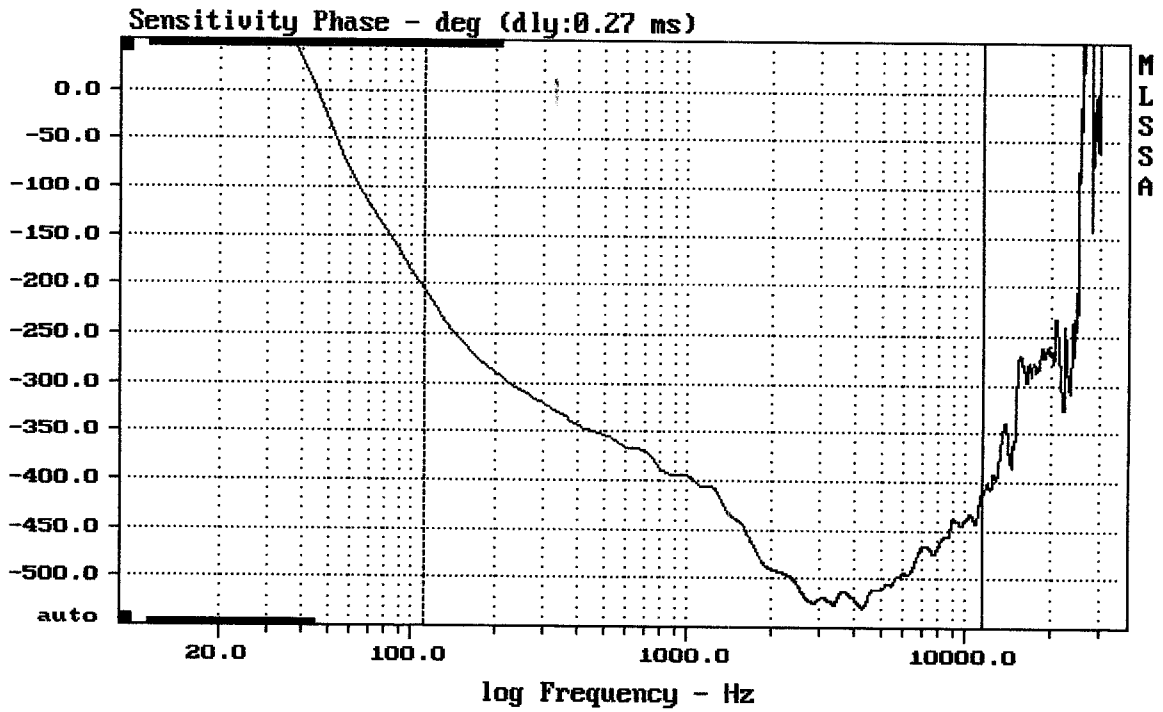
ART425-A MK II

MLSSA: Time Domain



Overlay Compare: dev= +3.7/-0.048, std= 0.16, avg= 0.001

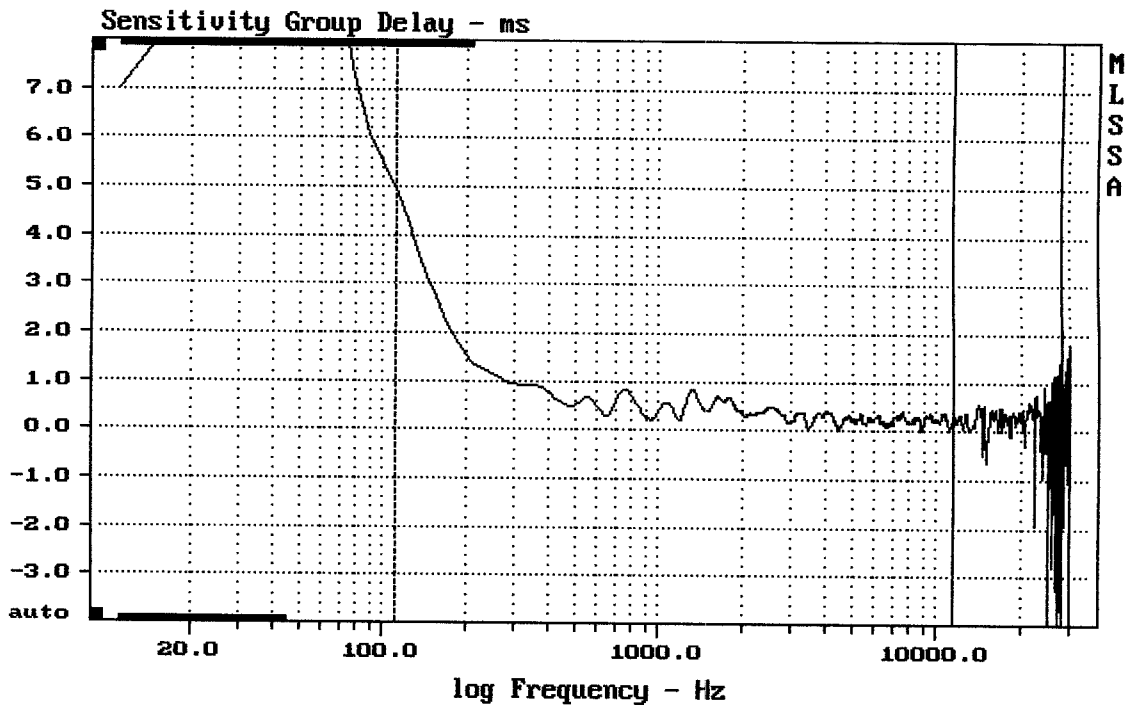
ART425-A MK II



mean: -465.6, rms: 468.1, std: 49.01, max: -205, min: -529.6

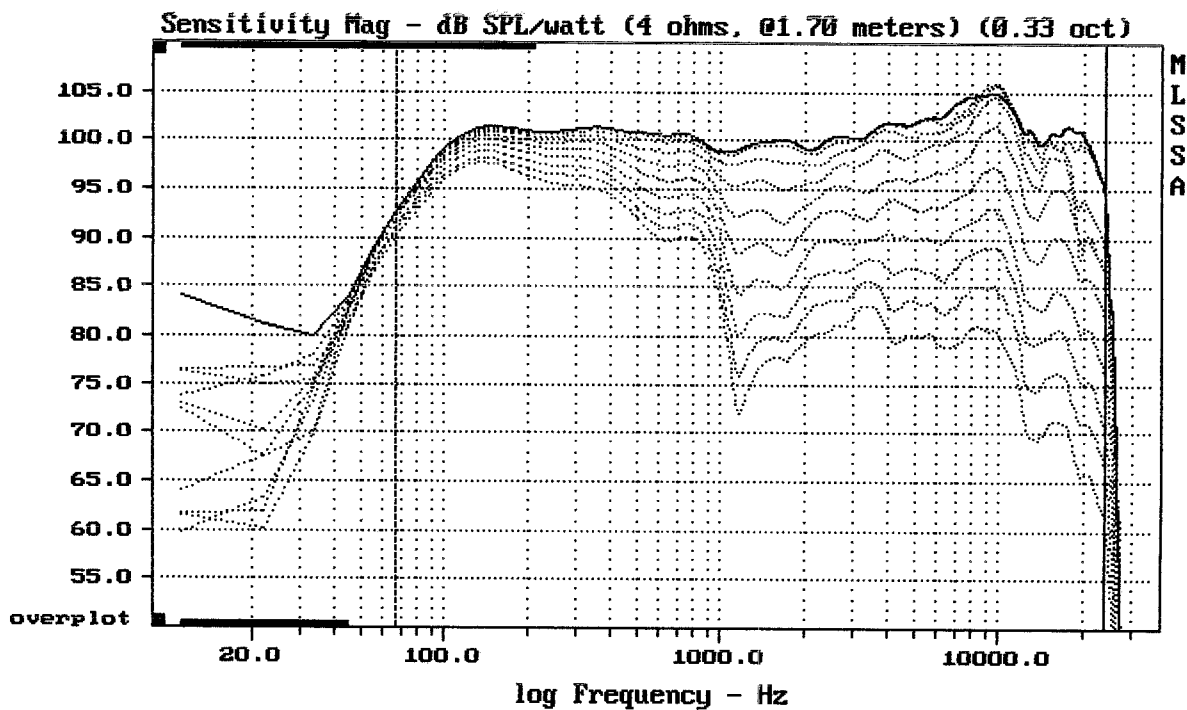
ART425-A MK II

MLSSA: Frequency Domain



mean: 0.3227, rms: 0.454, std: 0.3194, max: 4.952, min: 0.02156

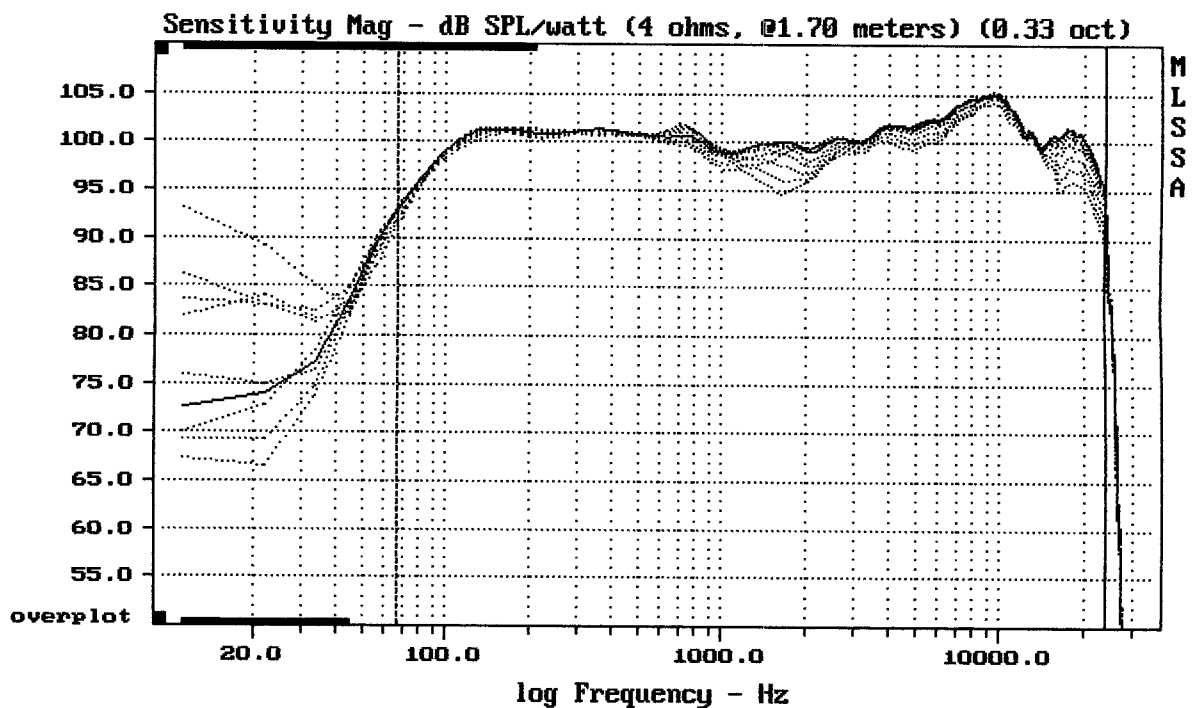
ART425-A MK II



Overlay Compare: dev= +24/-8.6, std= 6.3, avg= -27

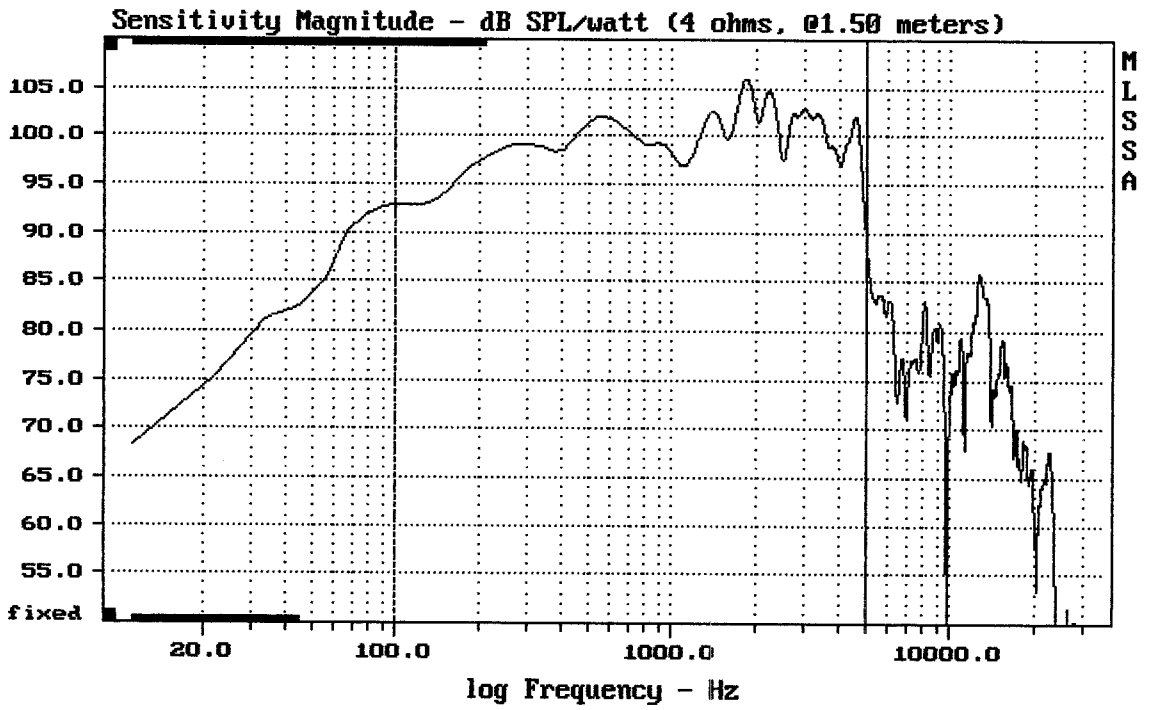
ART425-A MK II

MLSSA: Frequency Domain



mean: 99.03, rms: 99.67, std: 2.91, max: 104.17, min: 89.08

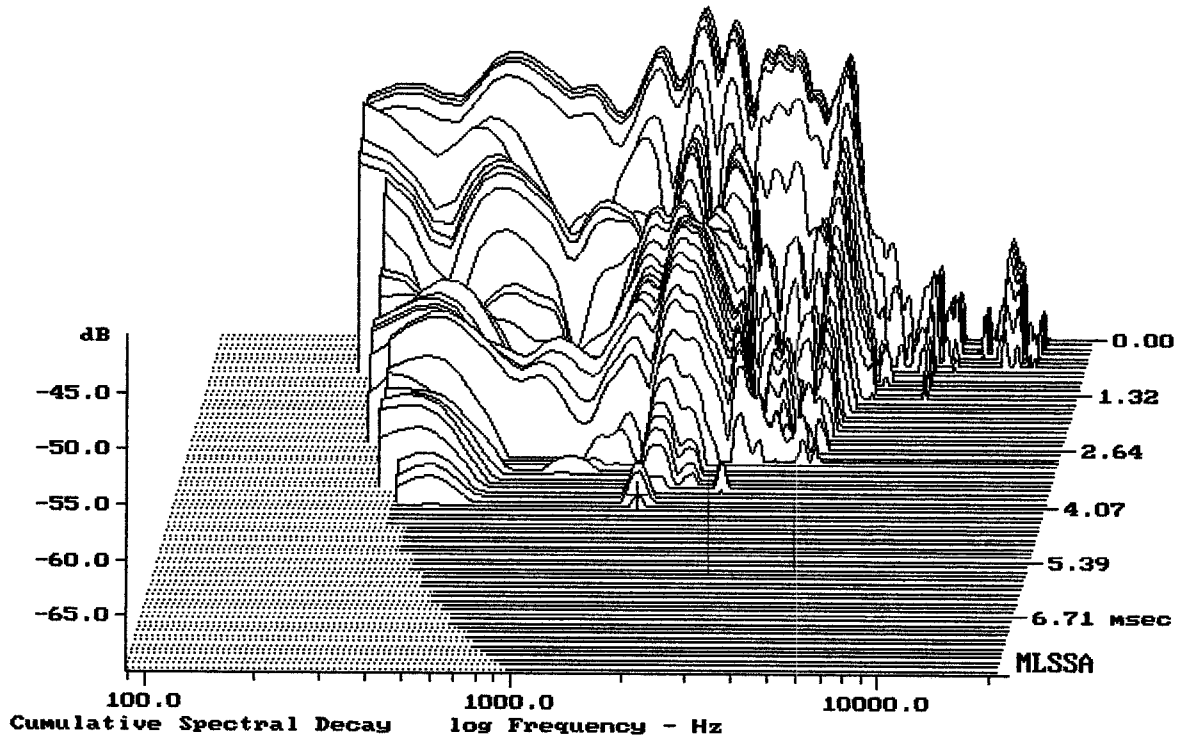
ART425-A MK II



Level (100:5005 Hz) = 100.03 dB SPL/watt (4 ohms, @1.50 meters)

15" FROM ART425-A MK II

MLSSA: Frequency Domain



-68.94 dB, 1642 Hz (37), 4.070 msec (38)

Measured Data

QC Limits

Line	Parameter	Value	Units
1	RMSE-free	0.29	Ohms
2	Fs	56.00	Hz
3	Re	2.83	Ohms[dc]
4	Res	36.88	Ohms
5	Qms	5.11	
6	Qes	0.39	
7	Qts	0.36	
8	L1	0.32	mH
9	L2	0.73	mH
10	R2	2.18	Ohms
11	RMSE-load	0.13	Ohms
12	Vas(Sd)	124.51	liters
13	Mms	70.78	grams
14	Cms	114	$\mu\text{M}/\text{Newton}$
15	B1	13.40	Tesla-M
16	SPLref(Sd)	99.3	dB[Re]
17	Rub-index	0.01	

Method: Mass-loaded (80.00 grams)

Area (Sd): 881.41 sq cm

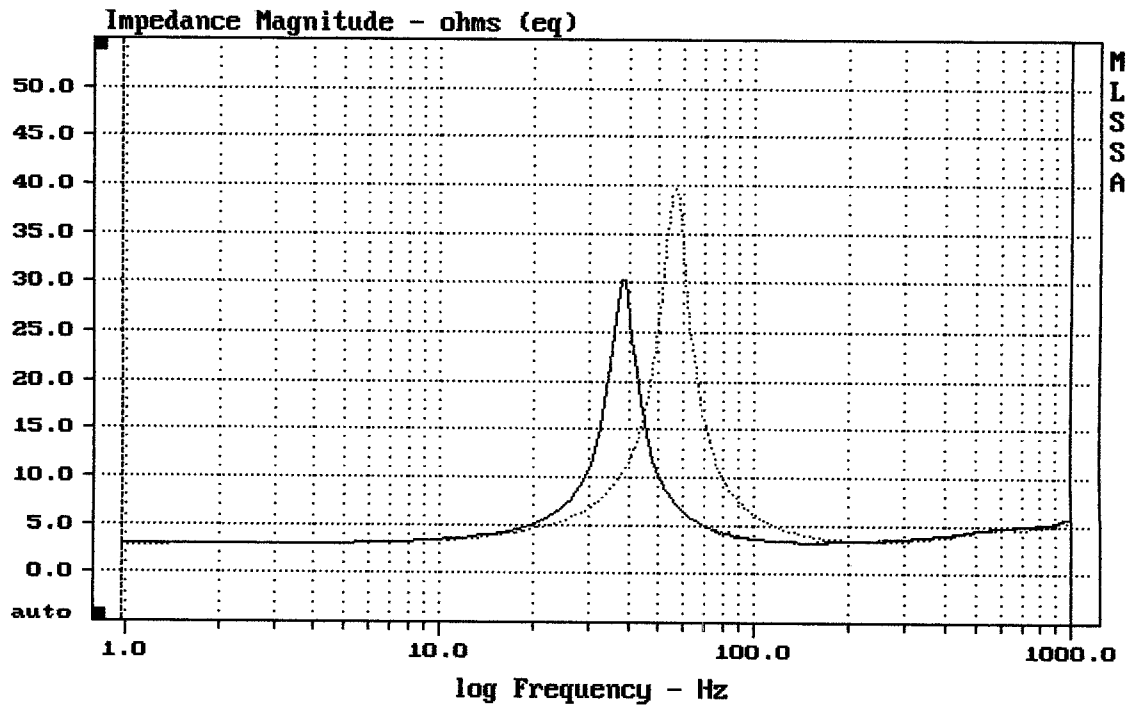
DCR mode: Measure (-0.07 ohms)

QC file: CLOSED

Analysis successful. Shift in Fs = -31.3% (-20% to -50% is recommended).

15" ART415-A MK II

MLSSA: Parameters



mean: 5.186, rms: 6.54, std: 3.985, max: 39.67, min: 2.866

MLSSA: Frequency Domain