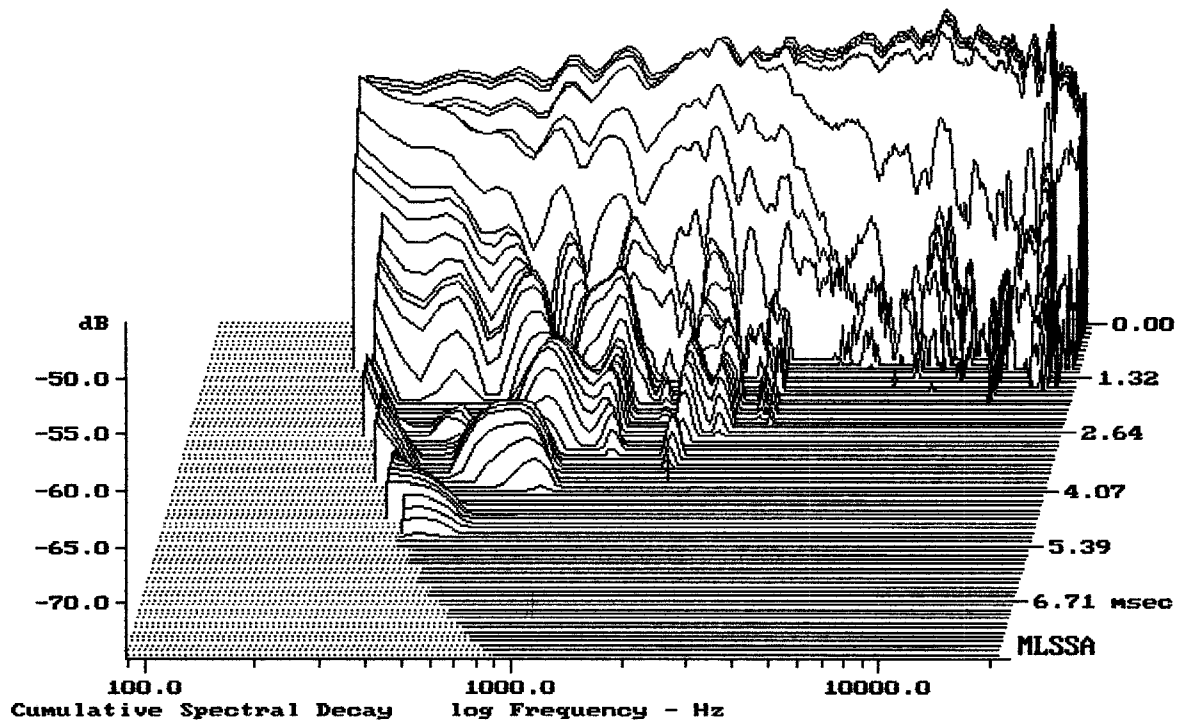


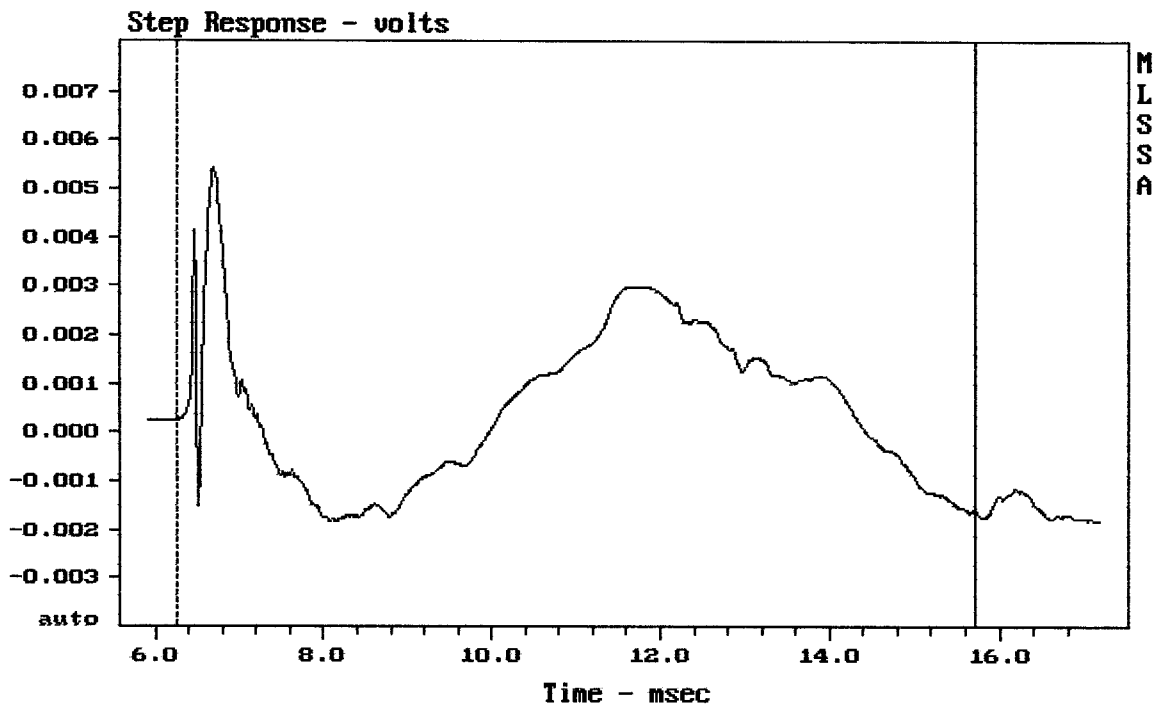
mean: 96.93, rms: 97.12, std: 1.65, max: 100.40, min: 88.55

ART315-A MK III

MLSSA: Frequency Domain



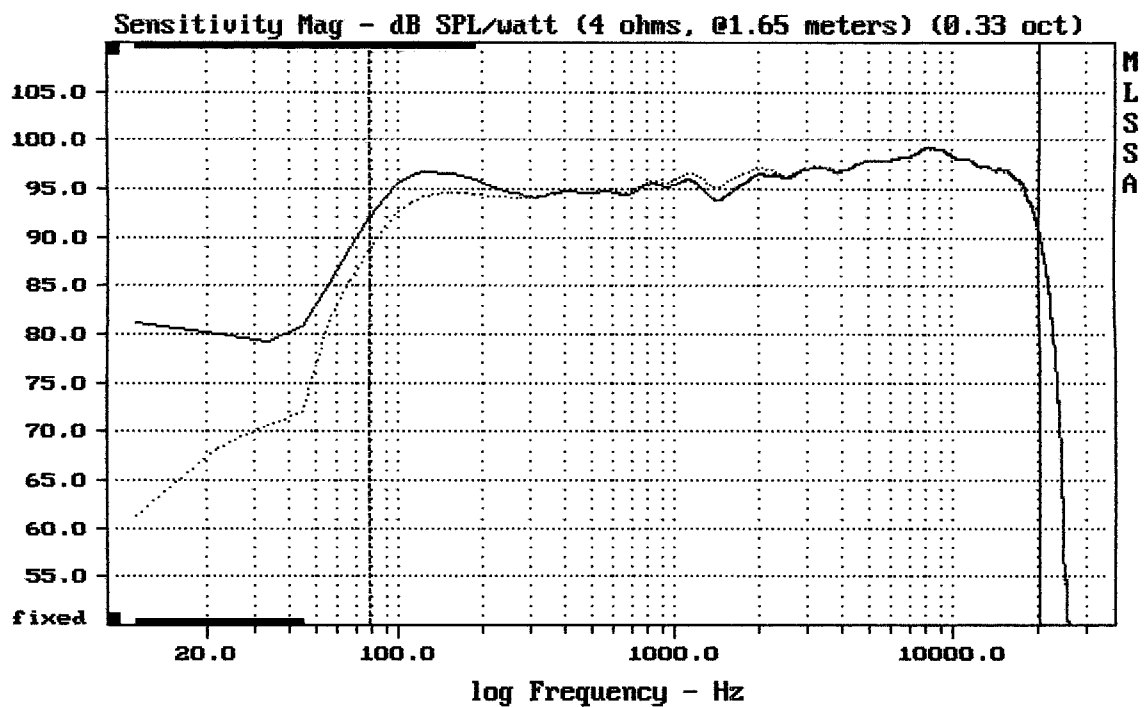
-74.68 dB, 1909 Hz (43), 3.630 msec (34)



mean: 0.000489, rms: 0.001653, std: 0.001579, max: 0.005445, min: -0.001821

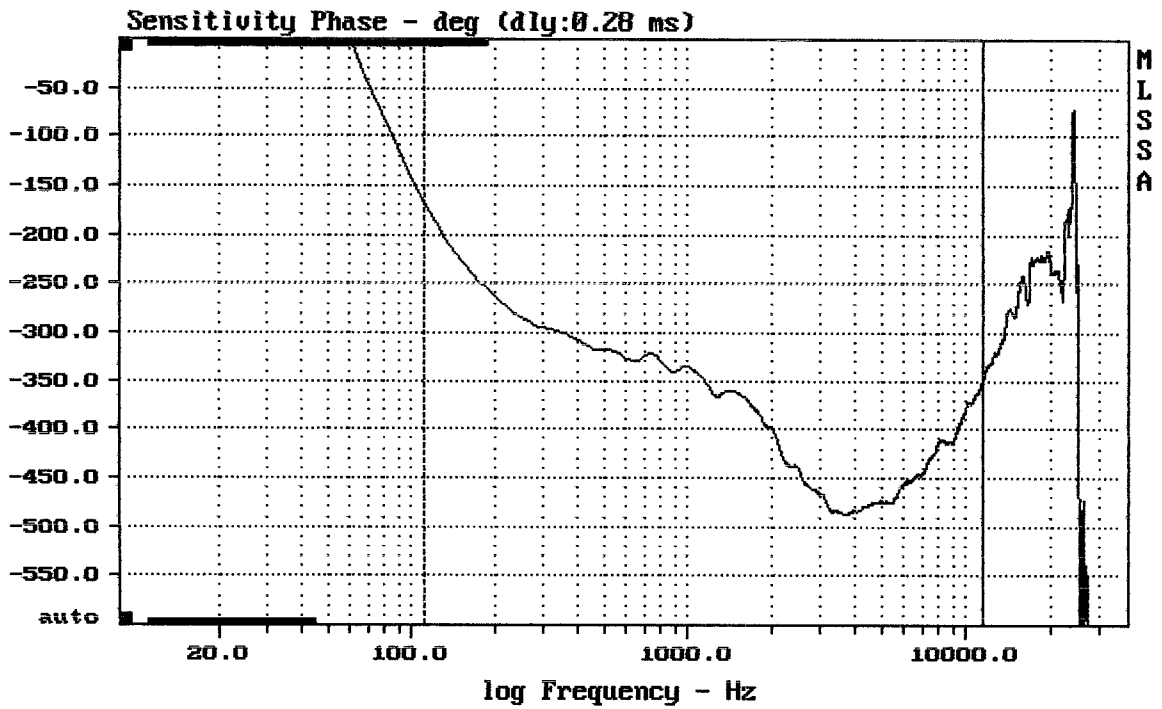
ART315-A MK III

MLSSA: Time Domain



Overlay Compare: dev= +3.2/-1.4, std= 0.32, avg= 0.0037

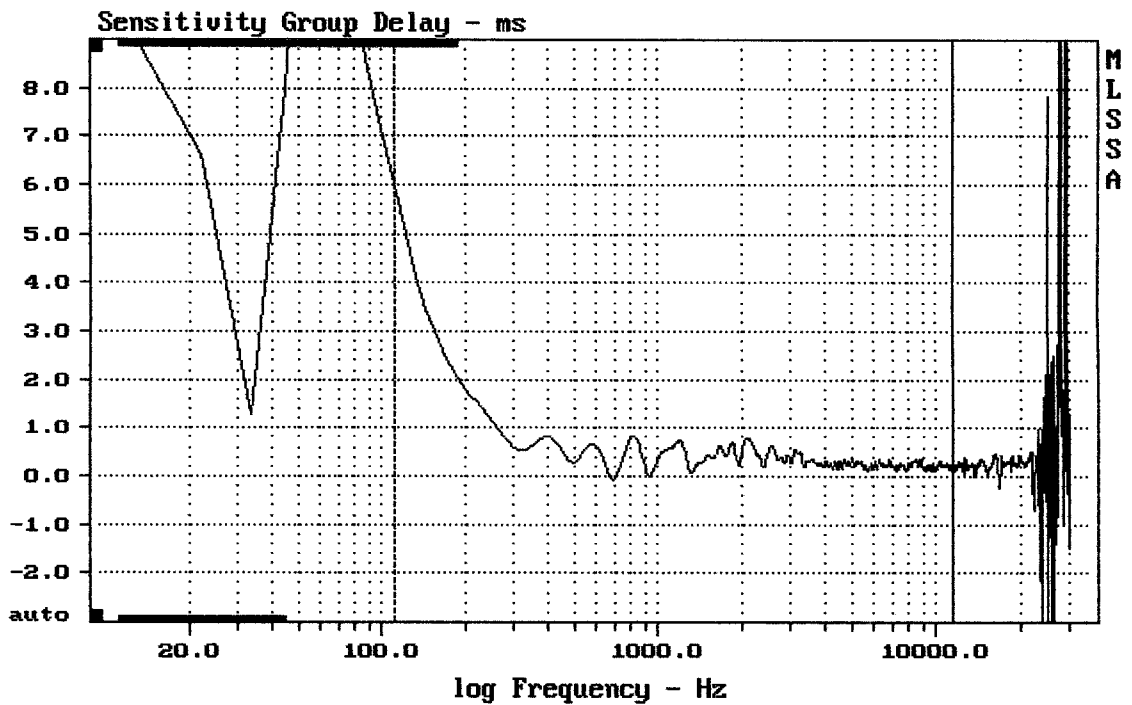
ART315-A MK III



mean: -417.4, rms: 420.7, std: 53.08, max: -166.8, min: -487

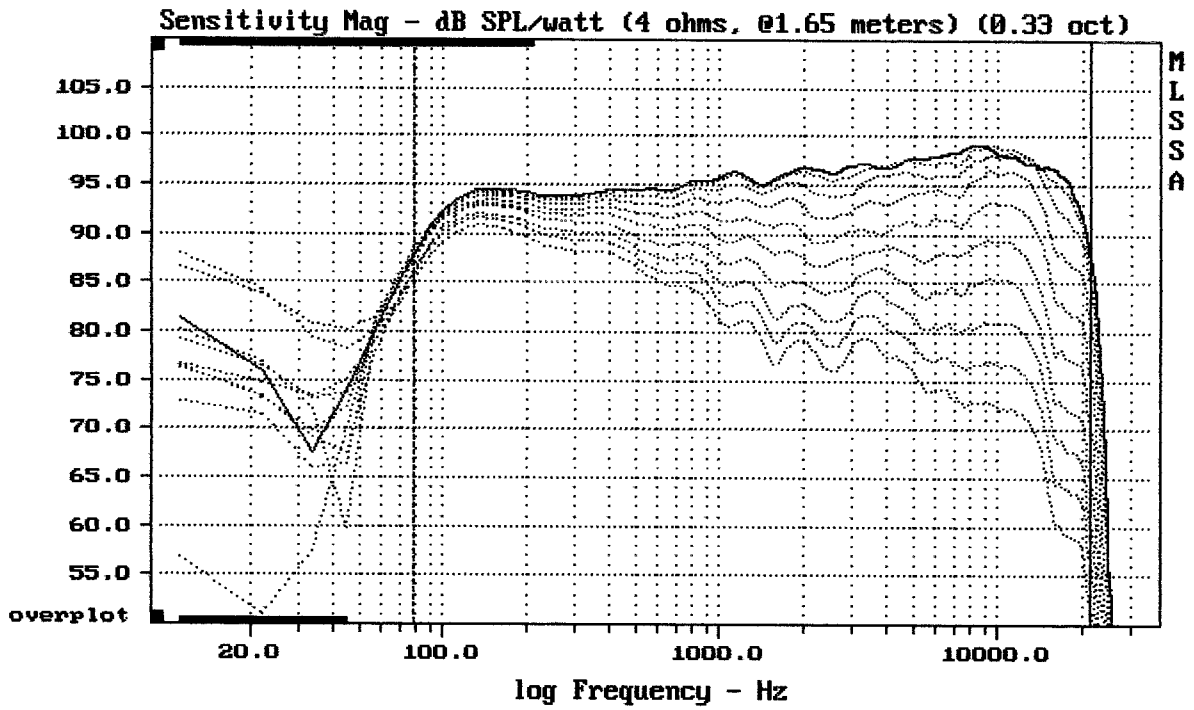
ART315-A MK III

MLSSA: Frequency Domain



mean: 0.3272, rms: 0.4834, std: 0.3558, max: 6.019, min: -0.06378

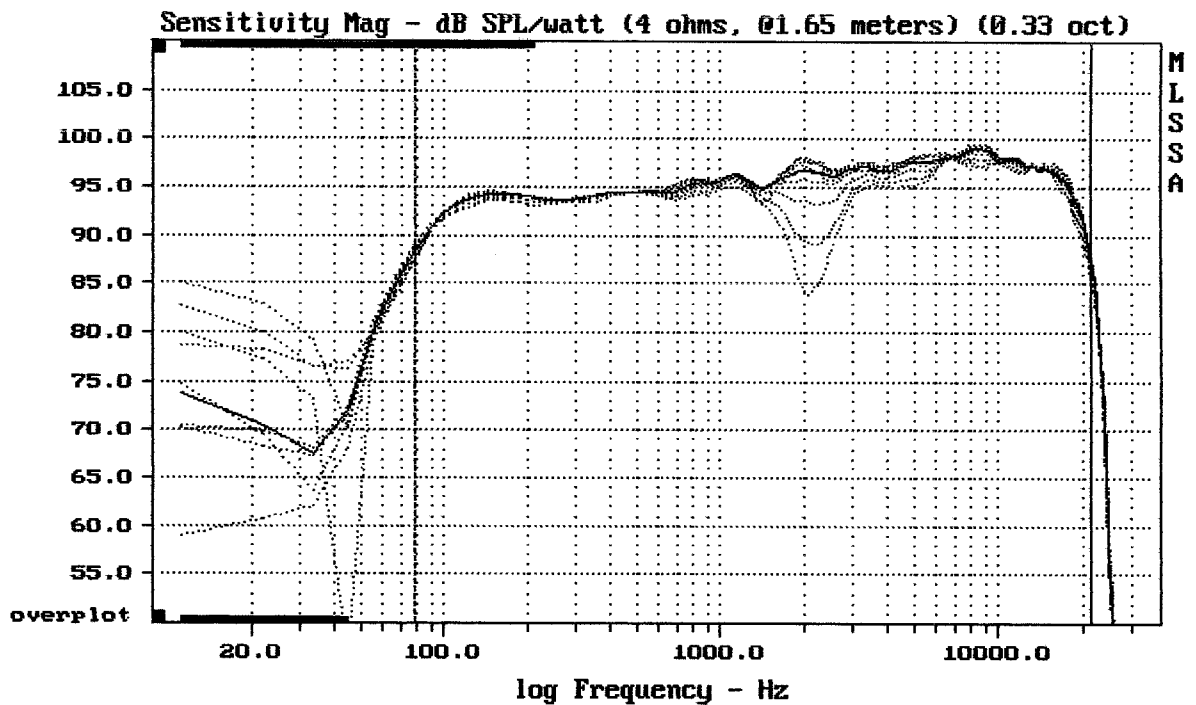
ART315-A MK III



Overlay Compare: dev= +24/-9.9, std= 7.2, avg= -27

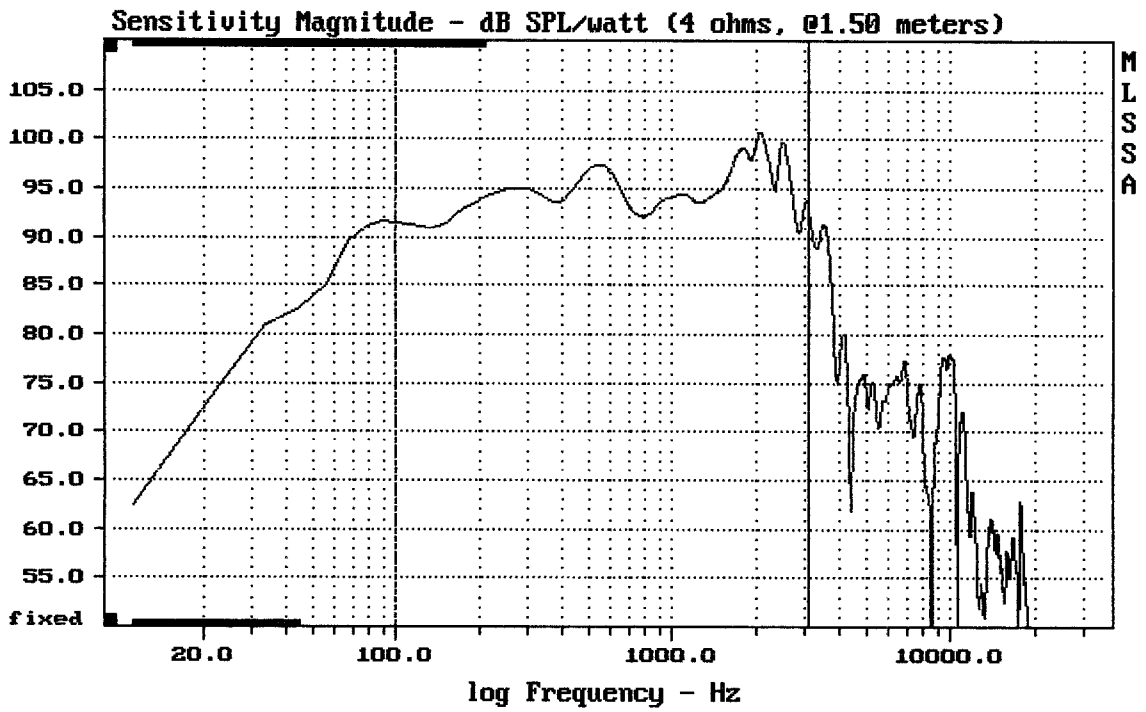
ART315-A MK III

MLSSA: Frequency Domain



mean: 95.44, rms: 95.87, std: 2.42, max: 99.00, min: 83.98

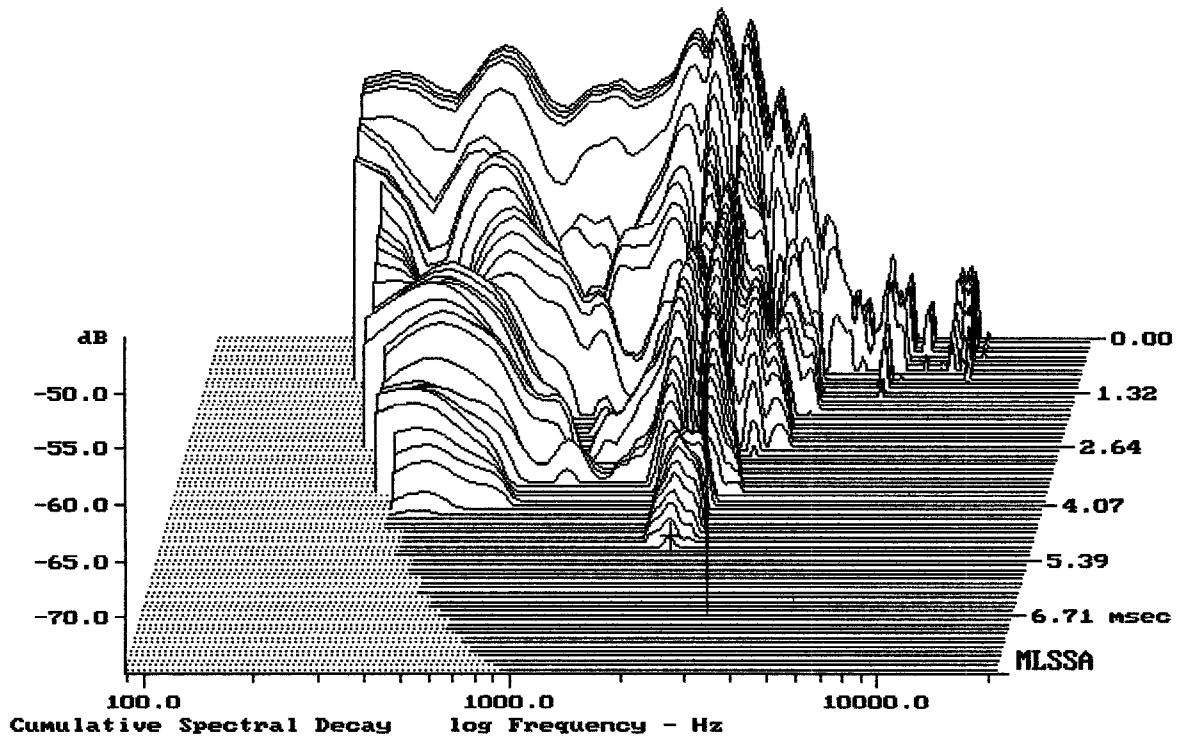
ART315-A MK III



Level (100:3107 Hz) = 95.10 dB SPL/watt (4 ohms, @1.50 meters)

15" FROM ART315-A MK III

MLSSA: Frequency Domain



-74.05 dB, 2175 Hz (49), 5.060 msec (47)

Measured Data

QC Limits

Line	Parameter	Value	Units
1	RMSE-free	0.42	Ohms
2	Fs	45.85	Hz
3	Re	3.64	Ohms[dc]
4	Res	88.55	Ohms
5	Qms	12.03	
6	Qes	0.49	
7	Qts	0.47	
8	L1	0.64	mH
9	L2	1.12	mH
10	R2	3.55	Ohms
11	RMSE-load	0.33	Ohms
12	Vas(Sd)	182.19	liters
13	Mms	67.94	grams
14	Cms	177	$\mu\text{M}/\text{Newton}$
15	Bl	12.00	Tesla-M
16	SPLref(Sd)	97.3	dB[Re]
17	Rub-index	0.01	

Method: Mass-loaded (80.00 grams)

Area (Sd): 855.30 sq cm

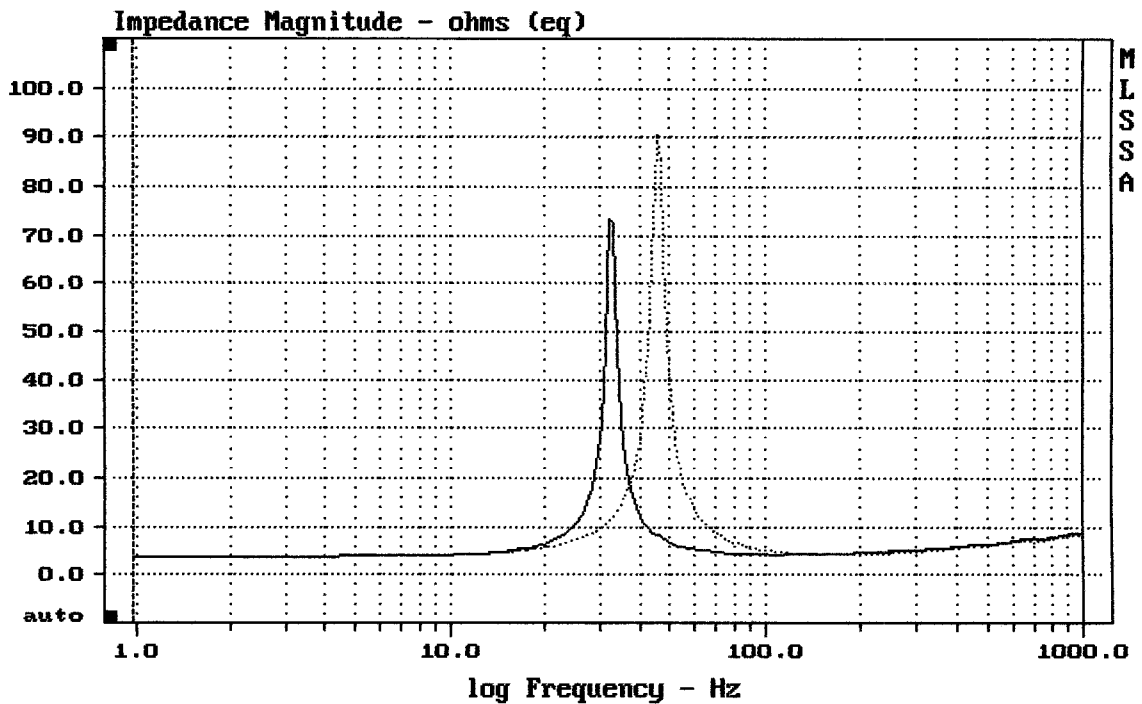
DCR mode: Measure (-0.07 ohms)

QC file: CLOSED

Analysis successful. Shift in Fs = -28.8% (-20% to -50% is recommended).

15" ART315-A MK III

MLSSA: Parameters



 mean: 7.175, rms: 9.414, std: 6.096, max: 90.54, min: 3.688

MLSSA: Frequency Domain