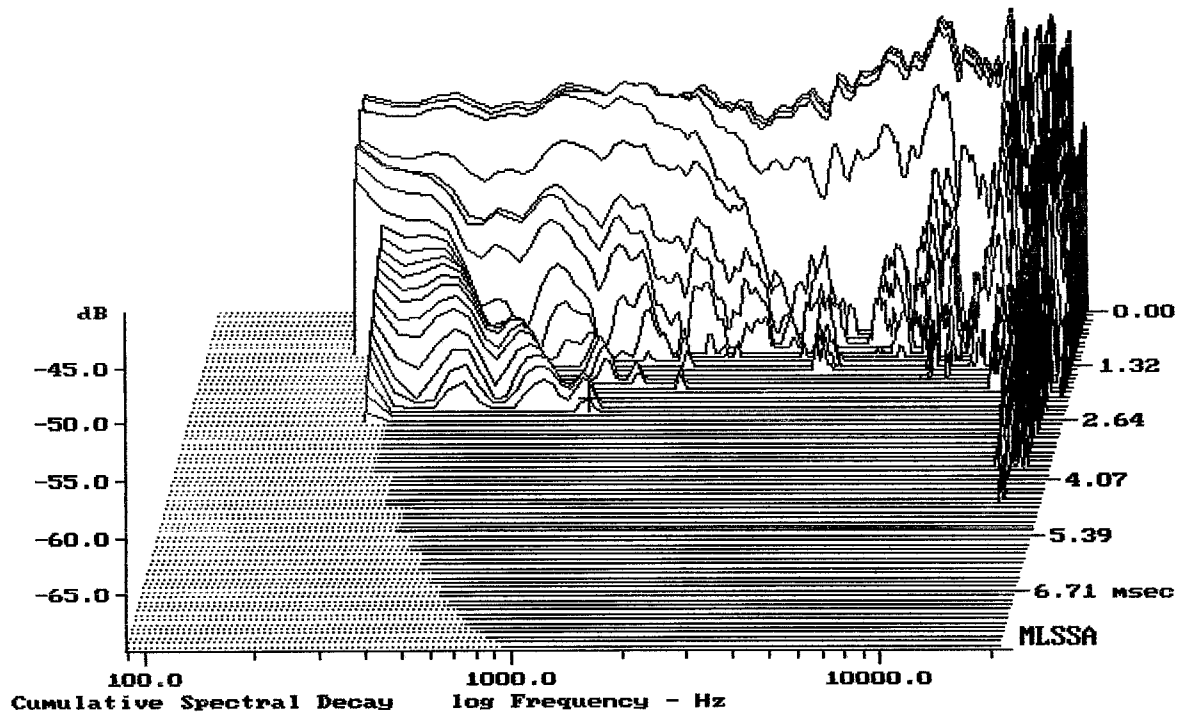


mean: 99.00, rms: 99.38, std: 2.31, max: 103.94, min: 82.08

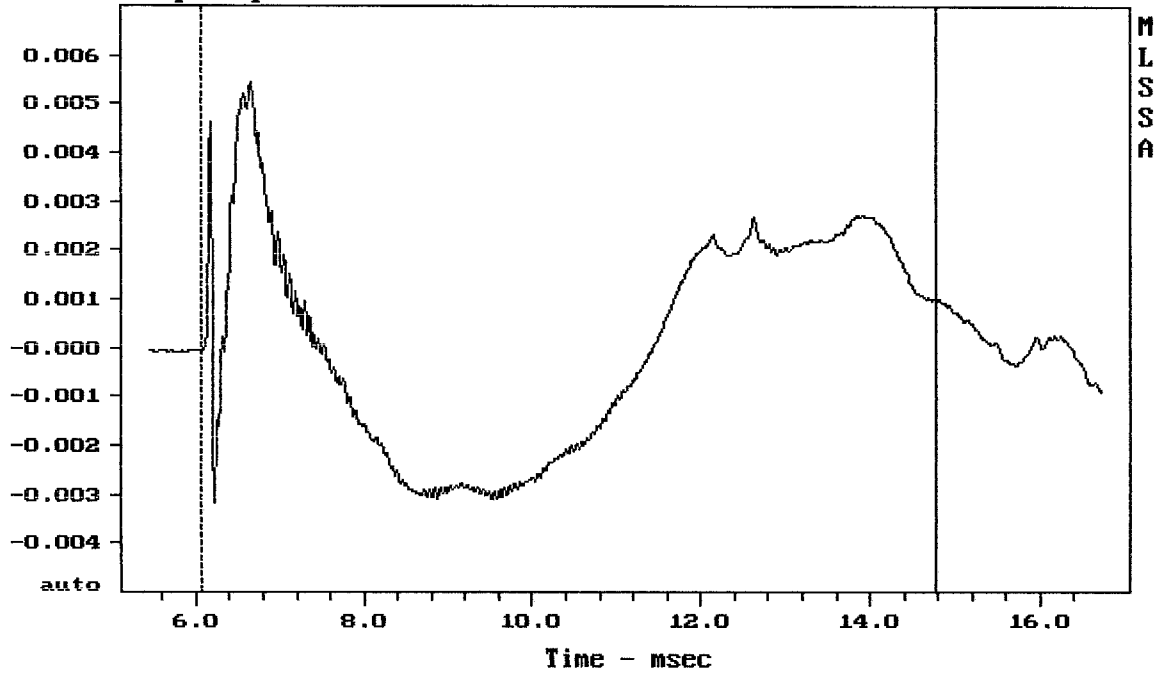
ART722-A MK II

MLSSA: Frequency Domain



-68.82 dB, 1065 Hz (24), 2.420 msec (23)

Step Response - volts



---

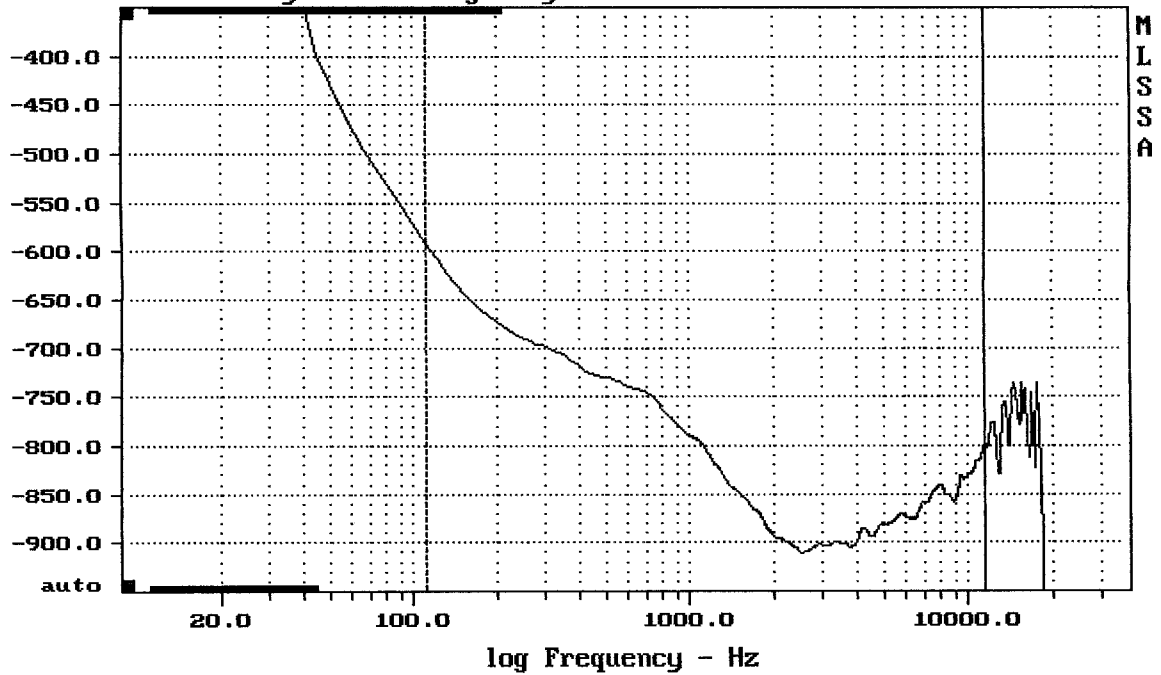
mean: 0.0001073, rms: 0.002249, std: 0.002247, max: 0.005427, min: -0.00318

---

ART722-A MK II

MLSSA: Time Domain

Sensitivity Phase - deg (dly:0.17 ms)

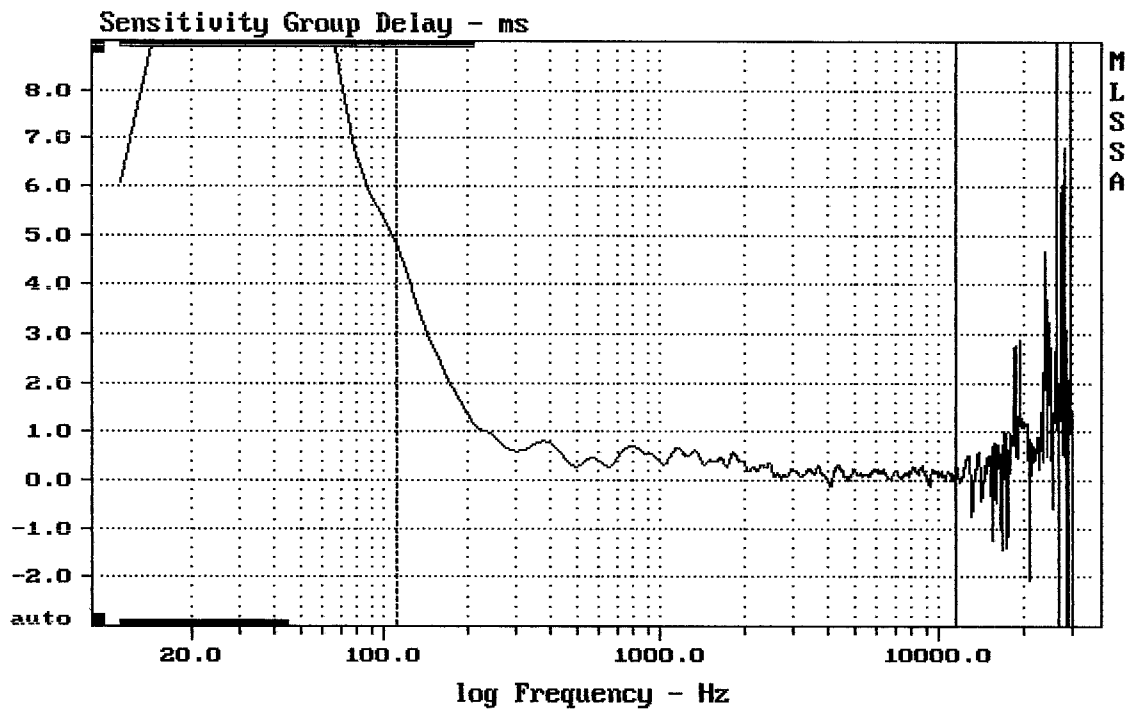


---

mean: -851.5, rms: 852.8, std: 47.76, max: -590.7, min: -911.2

---

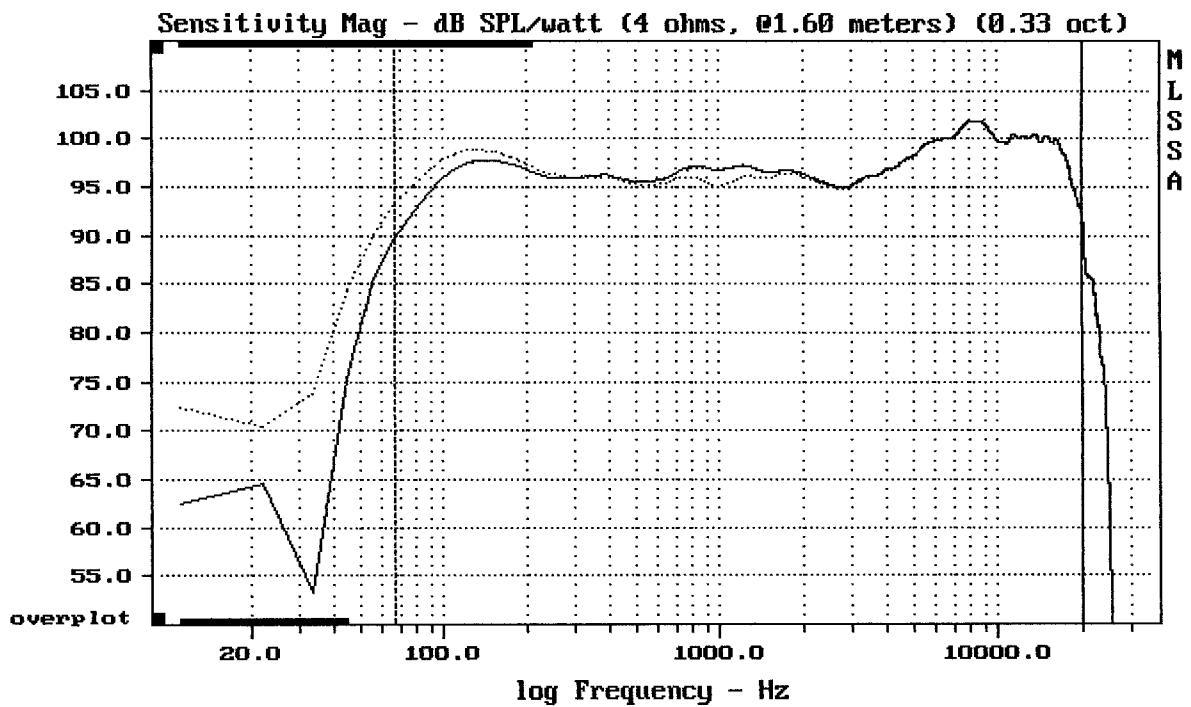
ART722-A MK II



mean: 0.2241, rms: 0.3841, std: 0.312, max: 4.819, min: -0.1351

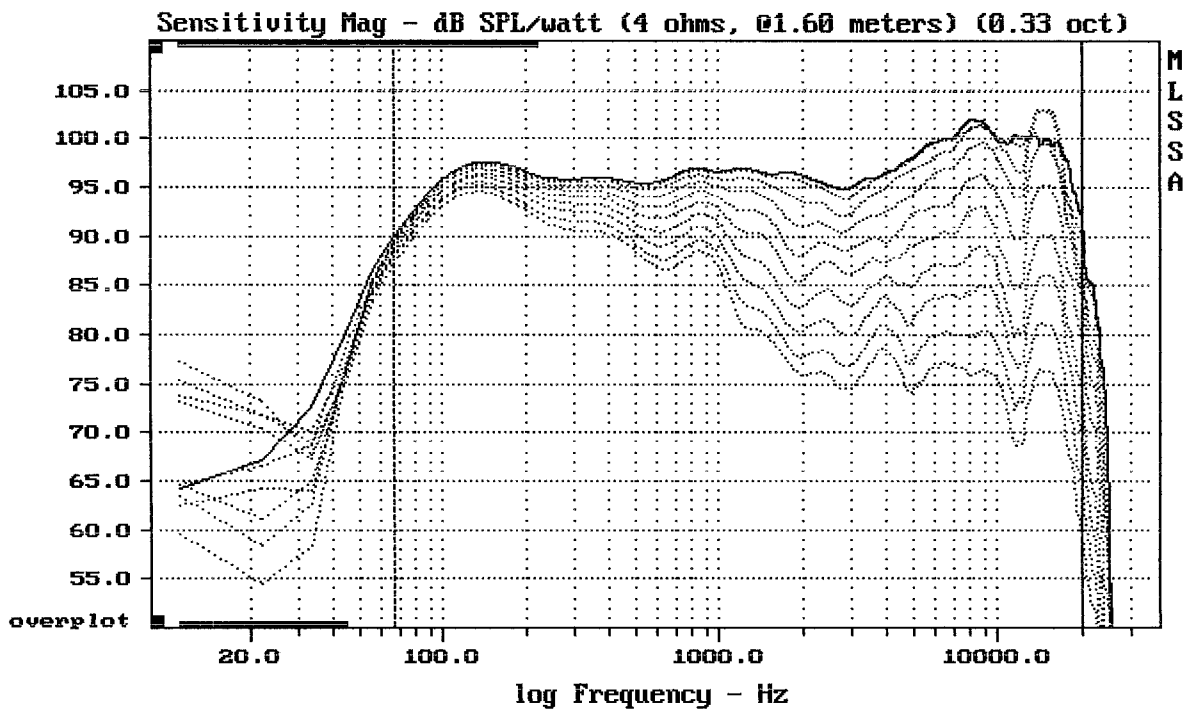
ART722-A MK II

MLSSA: Frequency Domain



Overlay Compare: dev= +3.5/-1.6, std= 0.29, avg= -0.049

ART722-A MK II



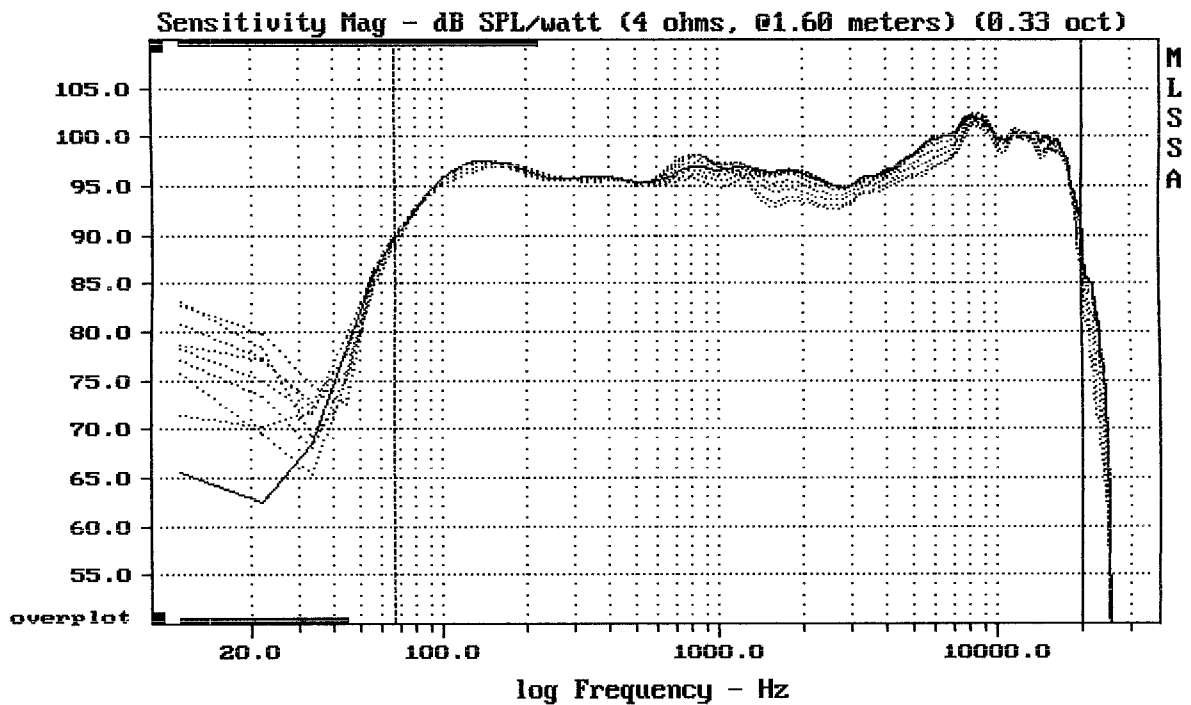

---

Overlay Compare: dev= +21/-8.6, std= 5.4, avg= -24

---

ART722-A MK II

MLSSA: Frequency Domain

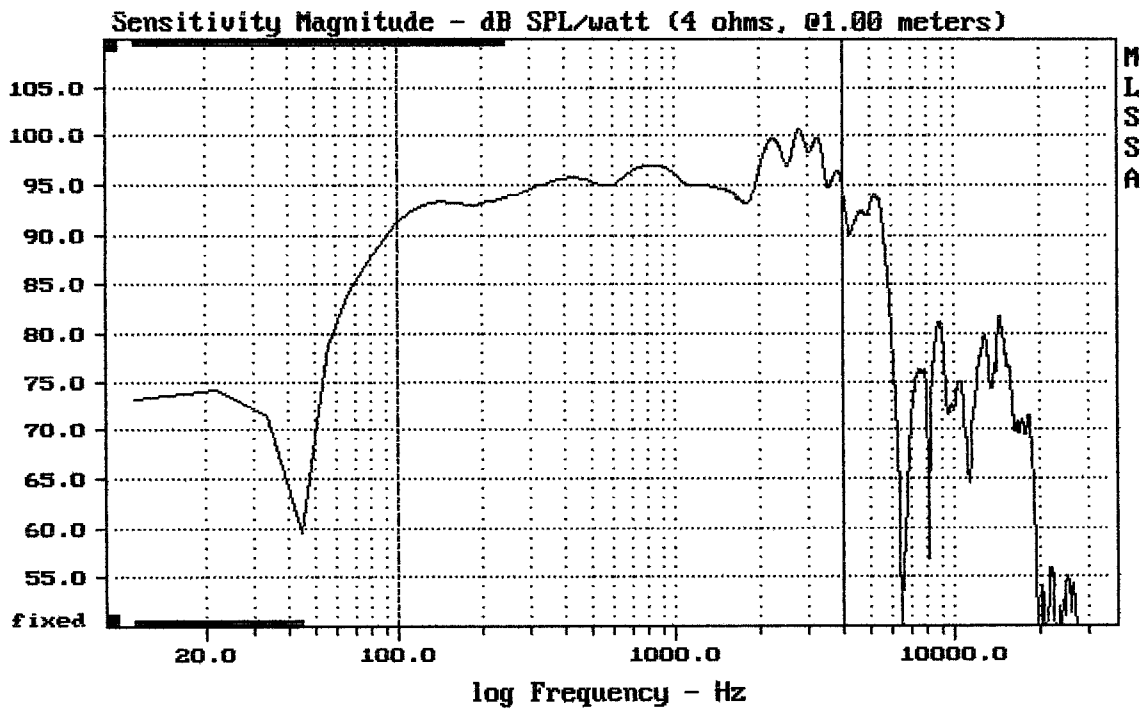



---

Overlay Compare: dev= +2.7/-3.5, std= 1.1, avg= -1.5

---

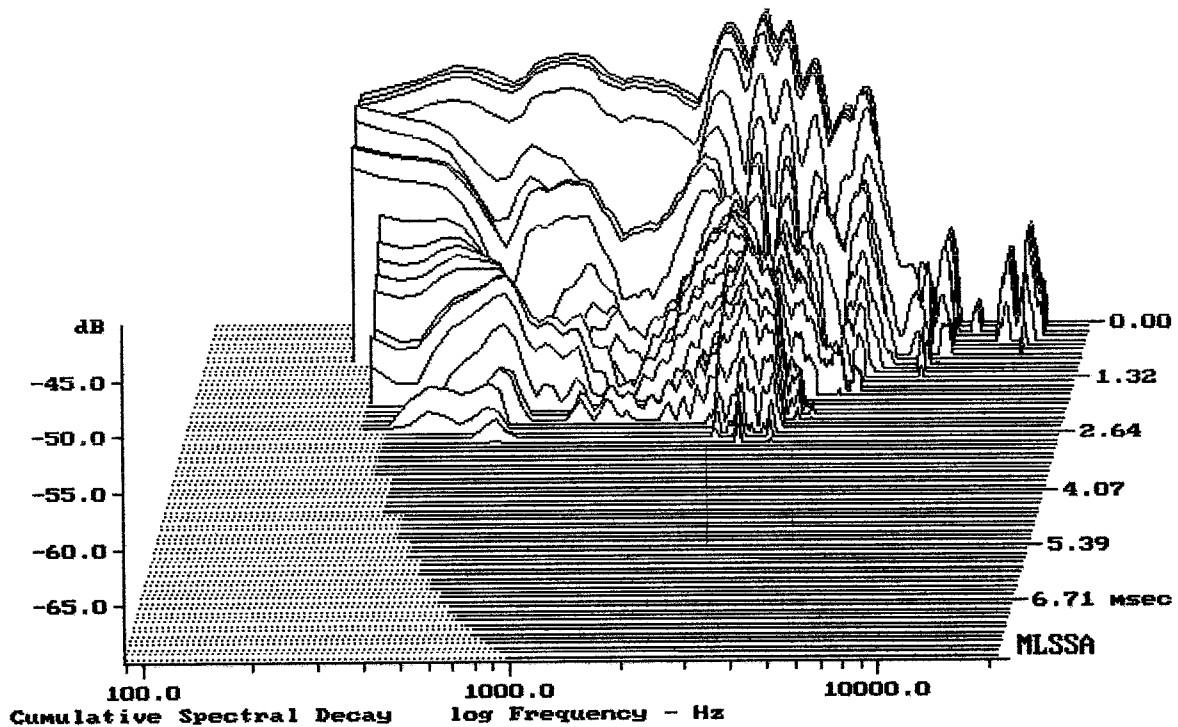
ART722-A MK II



Level (100:4006 Hz) = 95.69 dB SPL/watt (4 ohms, @1.00 meters)

ART722-A MK II

MLSSA: Frequency Domain



-68.54 dB, 2885 Hz (65), 2.860 msec (27)

Measured Data

QC Limits

Line	Parameter	Value	Units
1	RMSE-free	0.21	Ohms
2	Fs	58.82	Hz
3	Re	2.73	Ohms[dc]
4	Res	50.27	Ohms
5	Qms	6.76	
6	Qes	0.37	
7	Qts	0.35	
8	L1	0.43	mH
9	L2	0.78	mH
10	R2	2.24	Ohms
11	RMSE-load	0.17	Ohms
12	Vas(Sd)	67.62	liters
13	Mms	42.87	grams
14	Cms	171	$\mu\text{M}/\text{Newton}$
15	Bl	10.86	Tesla-M
16	SPLref(Sd)	97.6	dB[Re]
17	Rub-index	0.00	

Method: Mass-loaded (80.00 grams)

Area (Sd): 530.93 sq cm

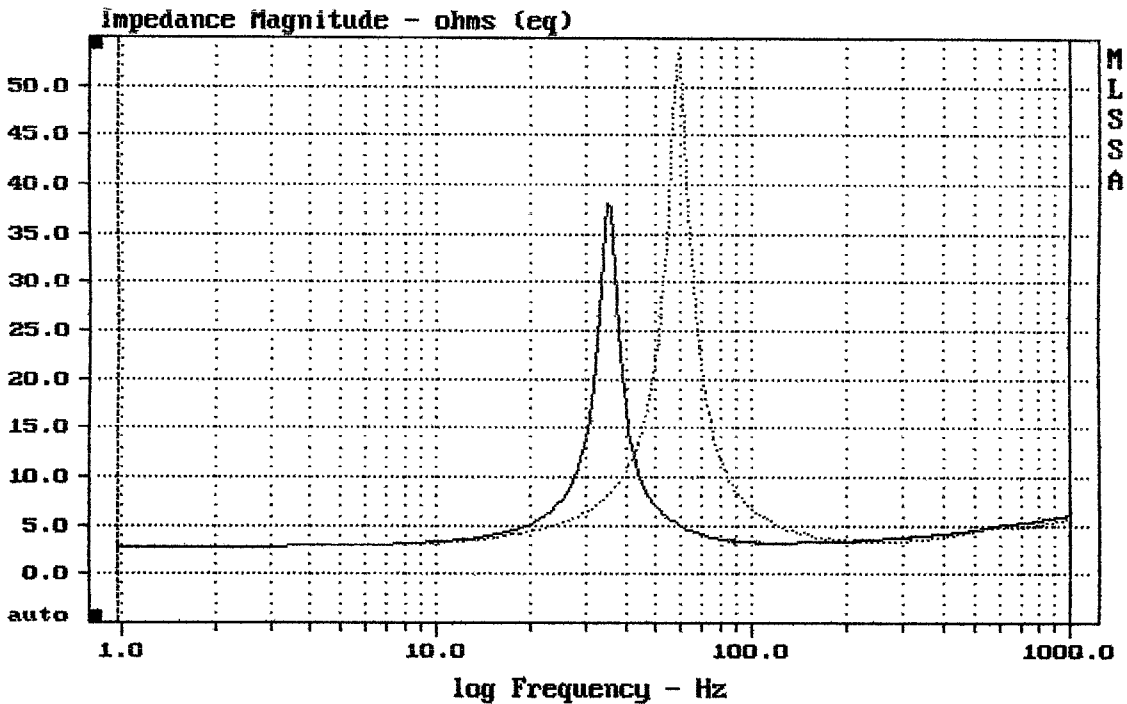
DCR mode: Measure (-0.07 ohms)

QC file: CLOSED

Analysis successful. Shift in Fs = -39.8% (-20% to -50% is recommended).

12" ART722-A MK II

MLSSA: Parameters



mean: 5.49, rms: 7.415, std: 4.983, max: 53.36, min: 2.789

MLSSA: Frequency Domain