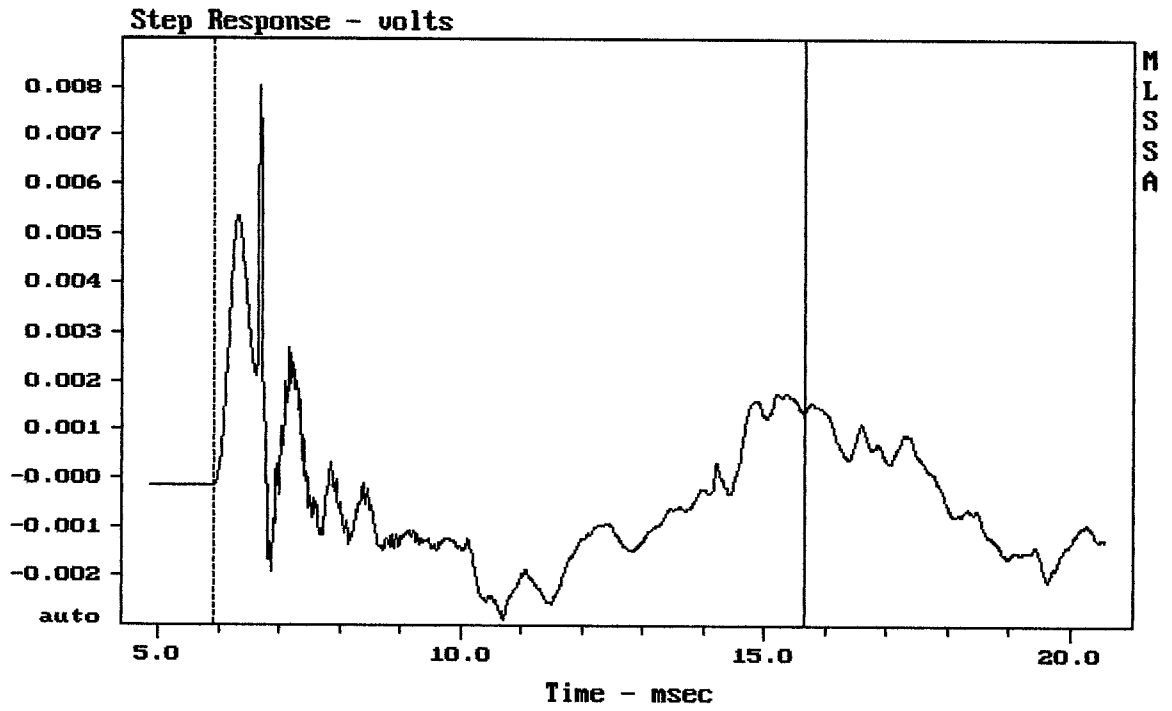


CURSOR: dy = -1.07773 x = 20008.4333 (1803)

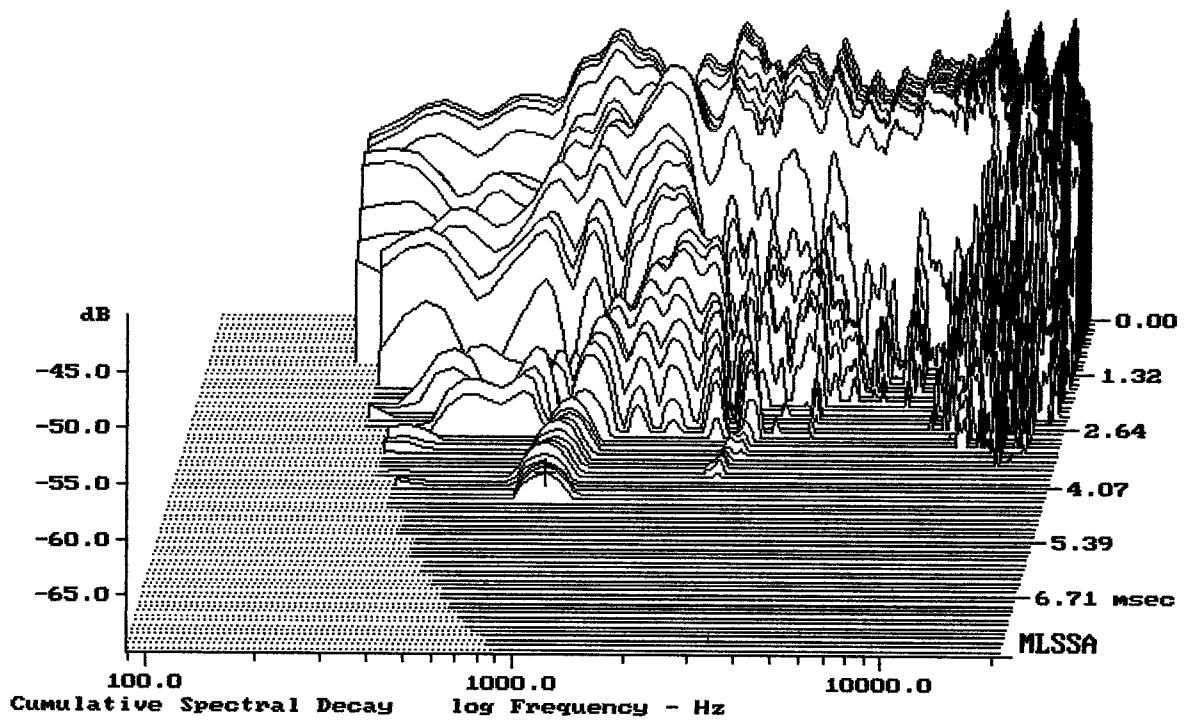
ZECK 21522



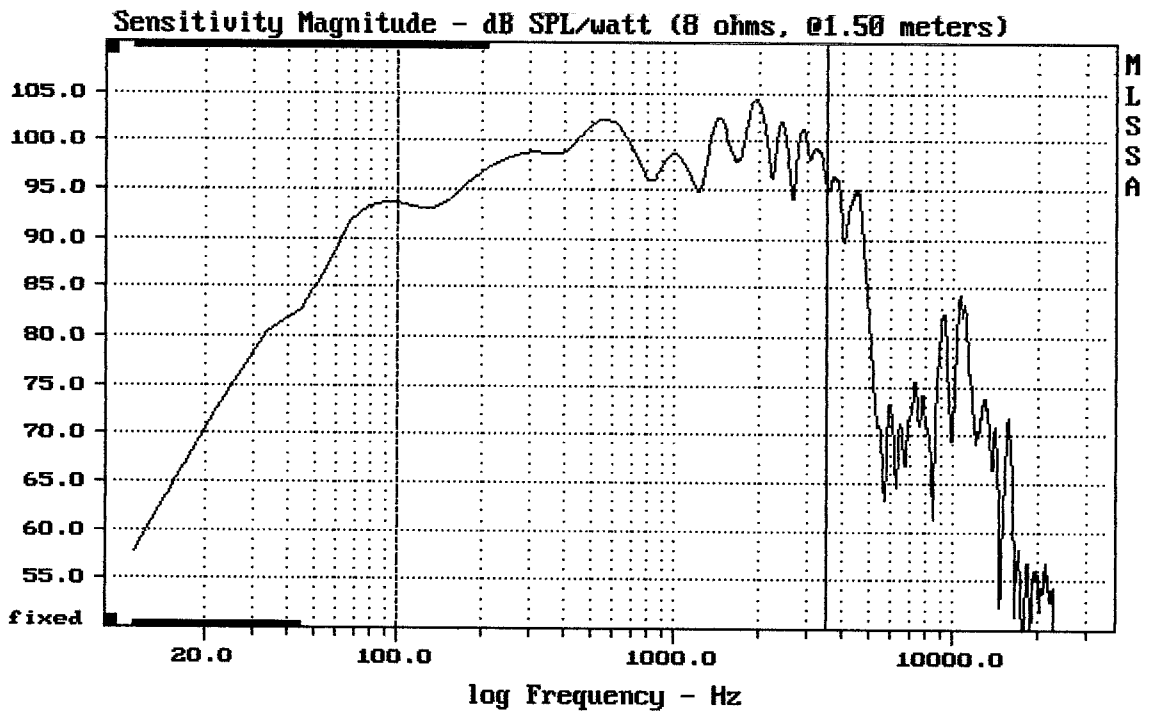
mean: -0.0004323, rms: 0.001725, std: 0.00167, max: 0.00804, min: -0.002879

ZECK 21522

MLSSA: Time Domain



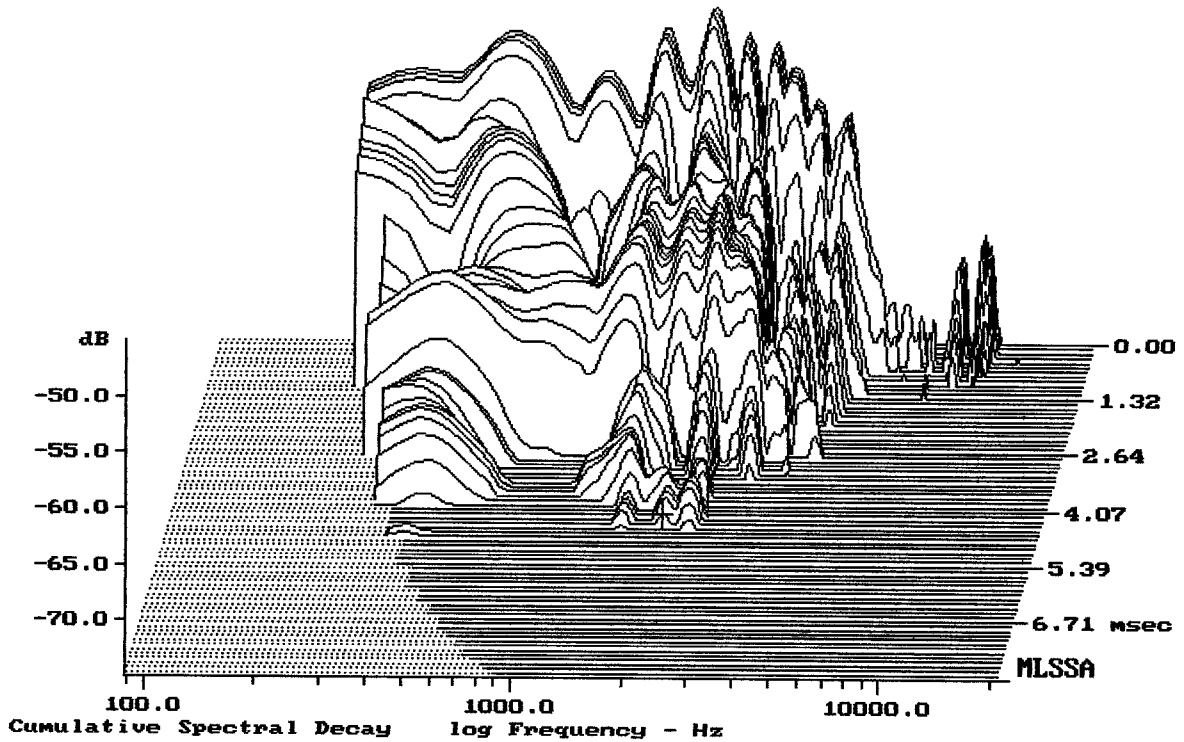
-67.68 dB, 932 Hz (21), 4.400 msec (41)



Level (100:3507 Hz) = 98.97 dB SPL/watt (8 ohms, @1.50 meters)

15" ZECK PW1506

MLSSA: Frequency Domain



-74.06 dB, 1953 Hz (44), 4.400 msec (41)

Measured Data

QC Limits

Line	Parameter	Value	Units
1	RMSE-free	0.43	Ohms
2	Fs	40.61	Hz
3	Re	5.43	Ohms[dc]
4	Res	86.12	Ohms
5	Qms	5.91	
6	Qes	0.37	
7	Qts	0.35	
8	L1	0.64	mH
9	L2	1.09	mH
10	R2	4.18	Ohms
11	RMSE-load	0.46	Ohms
12	Vas(Sd)	181.36	liters
13	Mms	92.40	grams
14	Cms	166	$\mu\text{M}/\text{Newton}$
15	B1	18.53	Tesla-M
16	SPLref(Sd)	97.0	dB[Re]
17	Rub-index	0.00	

Method: Mass-loaded (80.00 grams)

Area (Sd): 881.41 sq cm

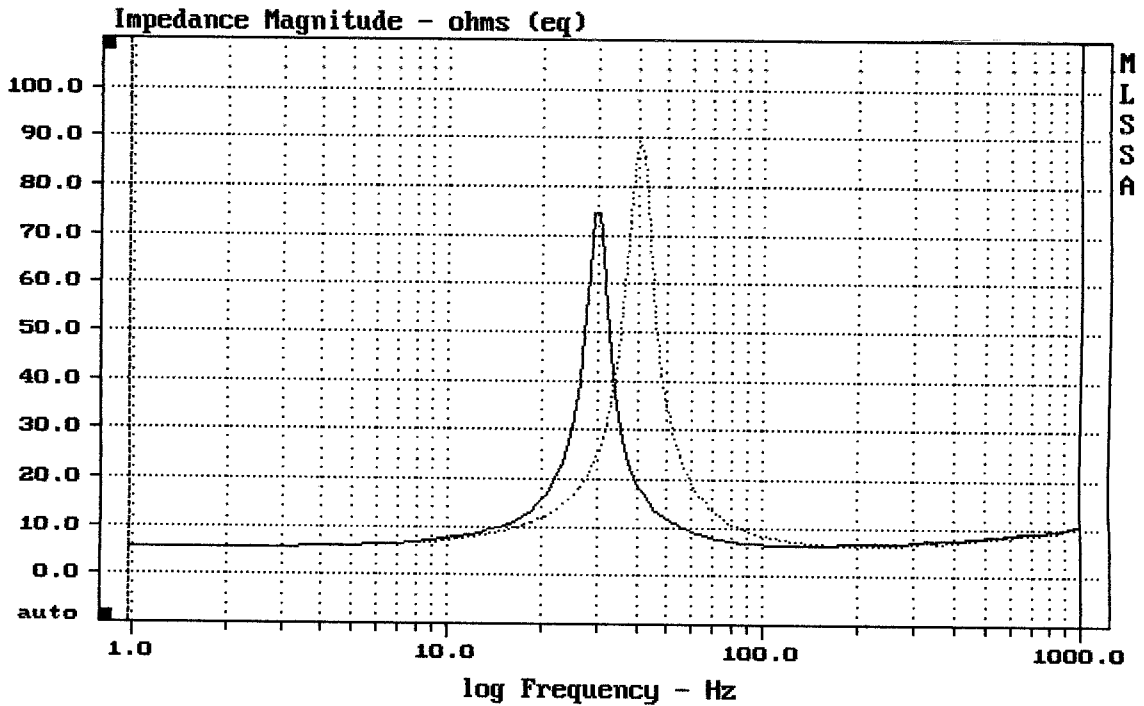
DCR mode: Measure (-0.07 ohms)

QC file: CLOSED

Analysis successful. Shift in Fs = -26.6% (-20% to -50% is recommended).

15" PHL ZECK PW1506 FROM FOCUS 2x15" 21522

MLSSA: Parameter



mean: 9.471, rms: 12.2, std: 7.683, max: 89.41, min: 5.48

MLSSA: Frequency Domain